

# Mi Scooter1S/ Lite/ Pro2 Explosive View

2020.05.10

## 1、Stem-Mi Electric Scooter

2、Hexagon Flat Head screws-  
M5\*16 (Lock Stem \*4)

3、Foldable Stem Pro

4、Bottom Bracket

5、Chasis assembly Pro

6、Front Wheel Assembly-L30-  
Black

## 7、Control Board Assembly

8、Hexagon socket cap screws-  
4\*10 (Lock Control board \*3)

## 9、(With Foam) Battery Cover

10、Hexagon Cylinder Head screws  
-M4\*12 (Lock battery \*4)

11、Hexagon Cylinder Head screws  
-M3\*8 (Lock foam-battery  
cover\*17)

12、PC Decorative Strip

13、Decorative Cover-Front &  
Rear Fork-Black

14、Rear Reinforcing Plate

15、Hexagon Spherical cylinder  
Head Screw-M6\*7\*11 (Lock real  
wheel \*2)

16、Rear wheel assembly

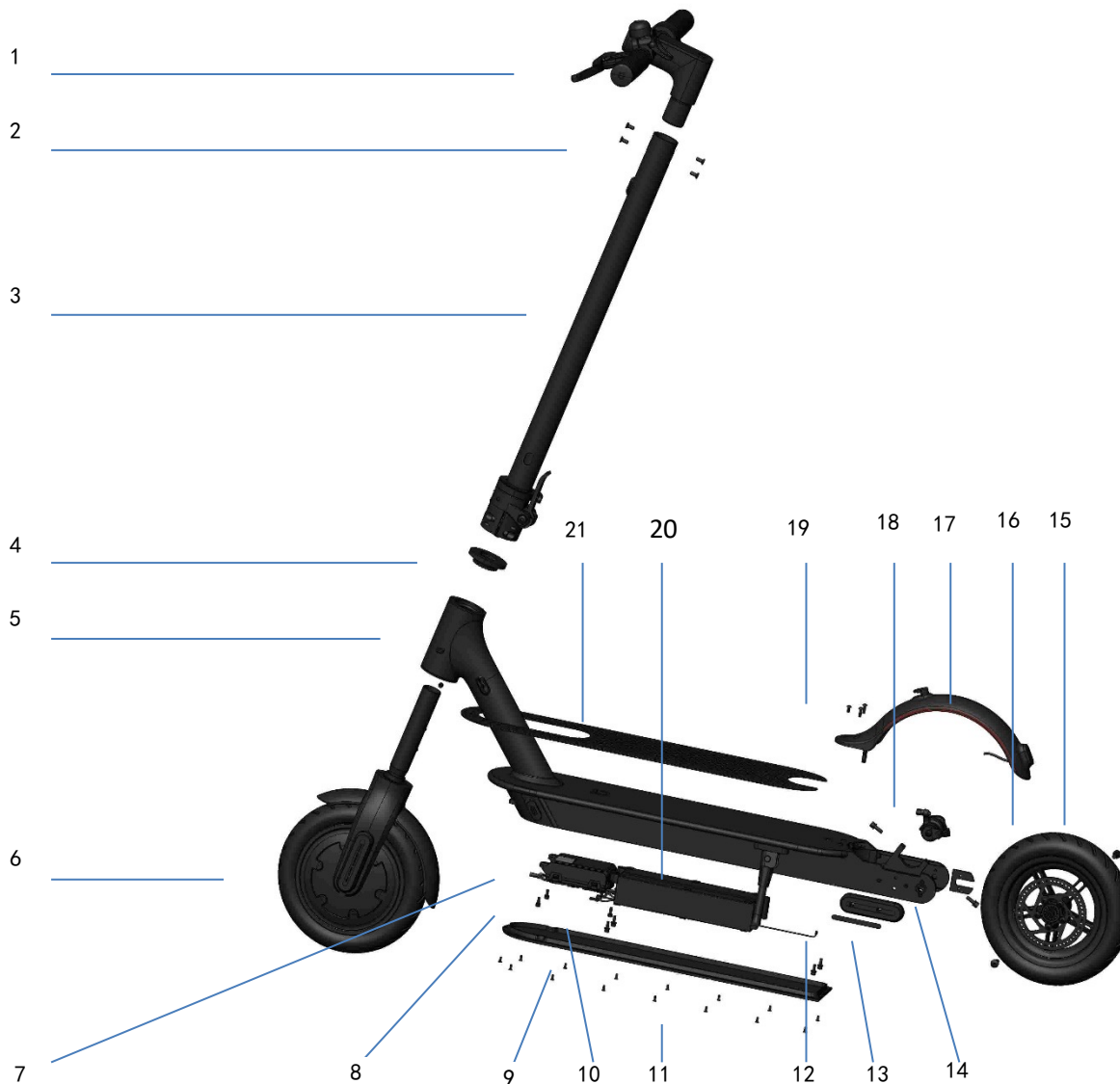
17、Rear Fender Assembly-Black、

18、Disc Brake Base

19、Cylinder head round head-  
M4\*8-Half Round Head (Lock Rear  
Fender\*3)

20、Battery Assembly-474Wh

21、Footmat



# Chasis Assembly

## 1、Steering kits-Front

### Fork-Black

2、Front Bumper Strip

3、Charging Port Base

4、Charging Plug

5、Cross Flat head

tapping screw-M2.5\*5

(Lock Charging port\*2)

6、Chasis Pro

7、Parking stand &

Hexagon Cylinder Head

screws-M6\*14-Semi

Circle Head\*2 pcs

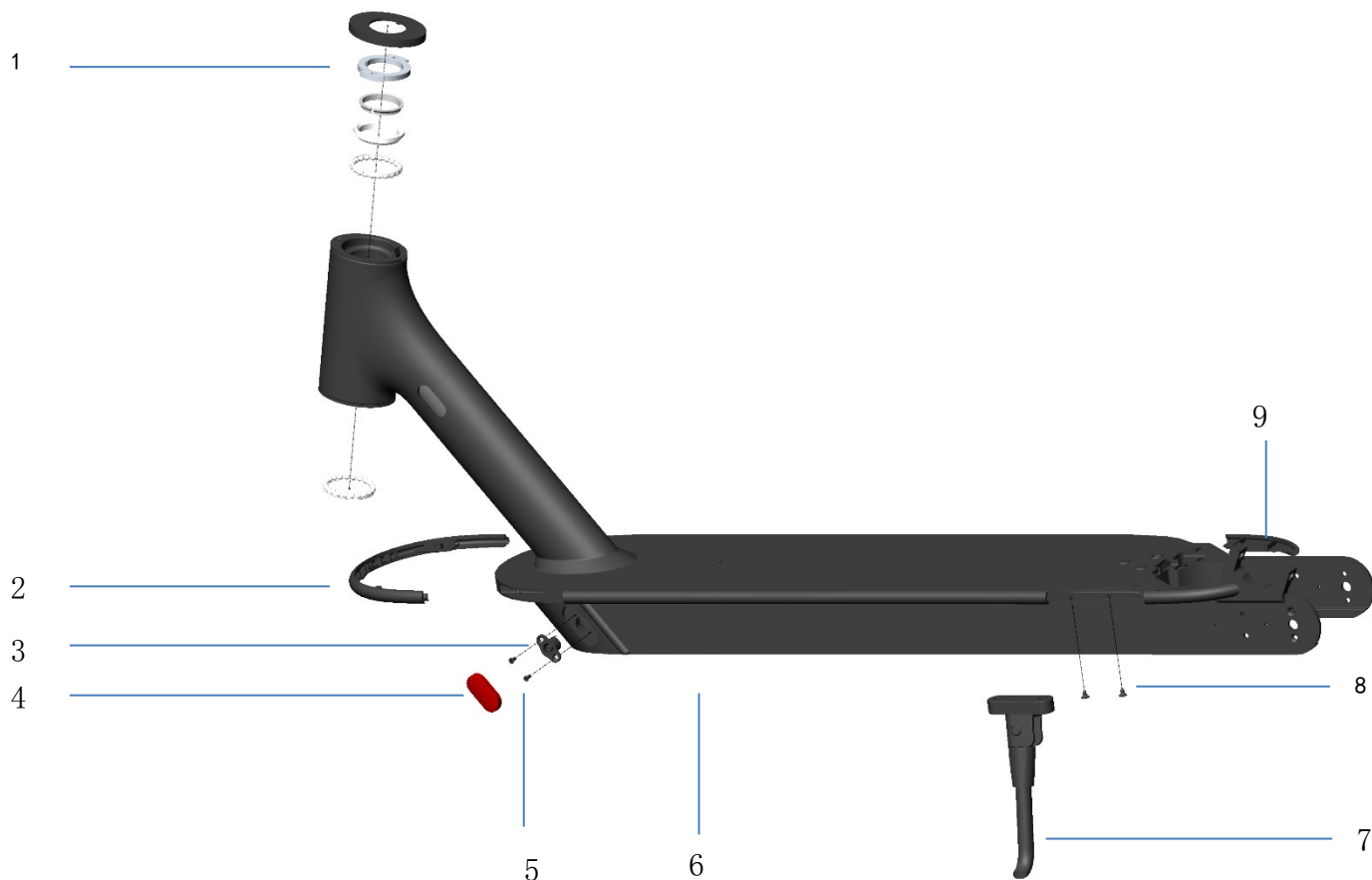
8、Cross Flat head

tapping screw-ST2.9\*6.5

(Front&Rear bumper strip\*)

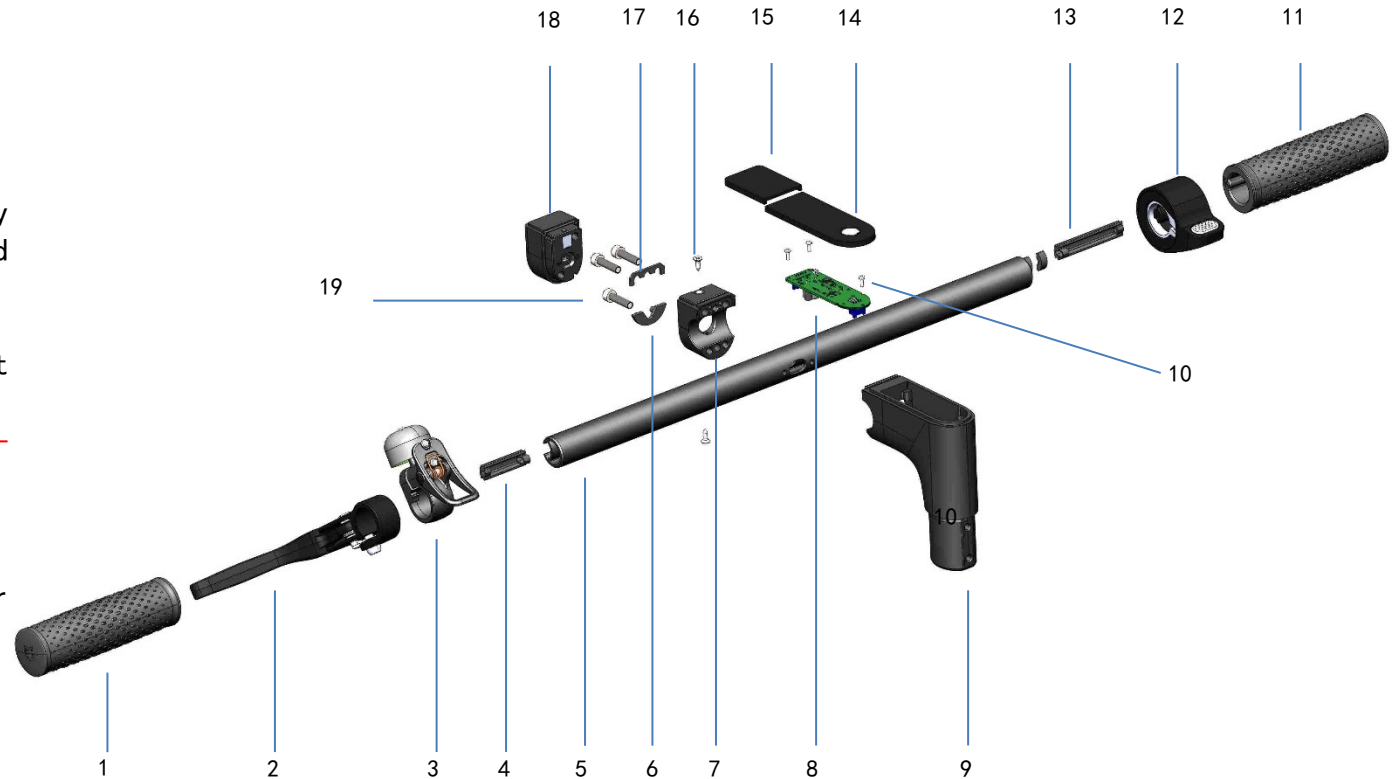
9、Rear Bumper Strip

(2pcs)



# Handle Bar Assembly

- 1、 Handle Grip pro\_Left
- 2、 Brake handle assembly
- 3、 Bell assembly Pro
- 4、 Cable Protector Plug-Left
- 5、 Handle Bar Shaft
- 6、 Gasket-Light Socket-Bottom
- 7、 Head Light Base
- 8、 LED Board-Mi Electric Scooter Pro-Black
- 9、 Stem/Forehead MainBody
- 10、 Cross Semicircle head screws -M2\*5 (to tight the Dashboard\*3)
- 11、 Handle Grip Pro\_Right
- 12、 Accelerator Assembly
- 13、 Cable Protector Plug-Right
- 14、 Rear DashBoard Cover assembly Pro
- 15、 Front Dashboard Cover
- 16、 Cross Flat head tapping screw-ST2.9\*9.5 (Lock Head light\*2)
- 17、 Light Base Gasket-Upper
- 18、 Head Light Assembly
- 19、 Hexagon Cylinder head screws-M5\*18 ( Lock headlight Base\*3)



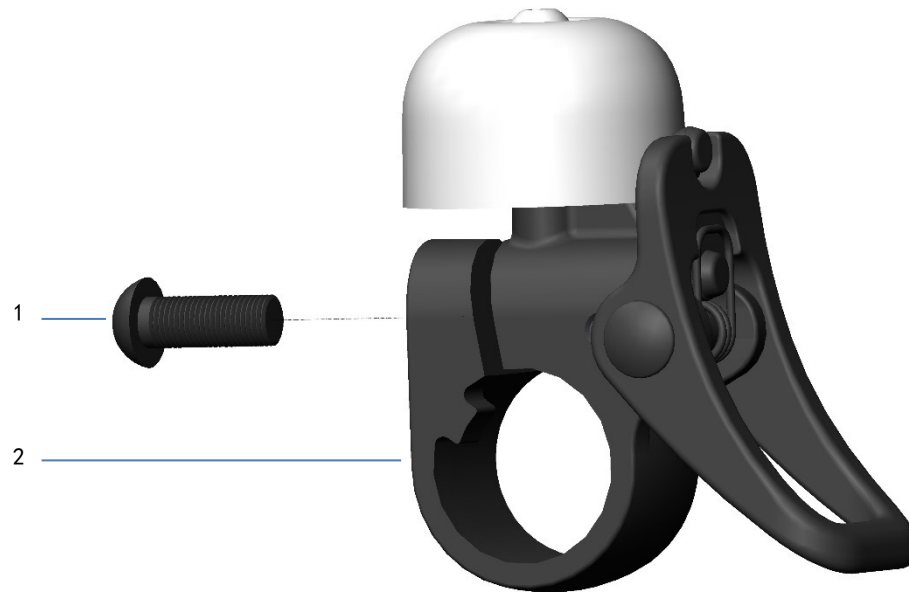
# Brake Lever

- 1、 Brake Handle
- 2、 Hexagon socket cap screws-M6\*16



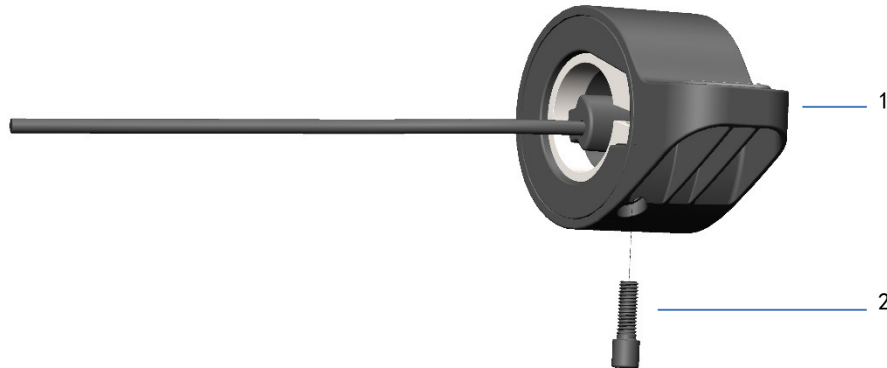
# Bell

- 1、Hexagon socket  
cap screws—M6\*25—  
Half round head
- 2、Bell Main  
Assembly Pro



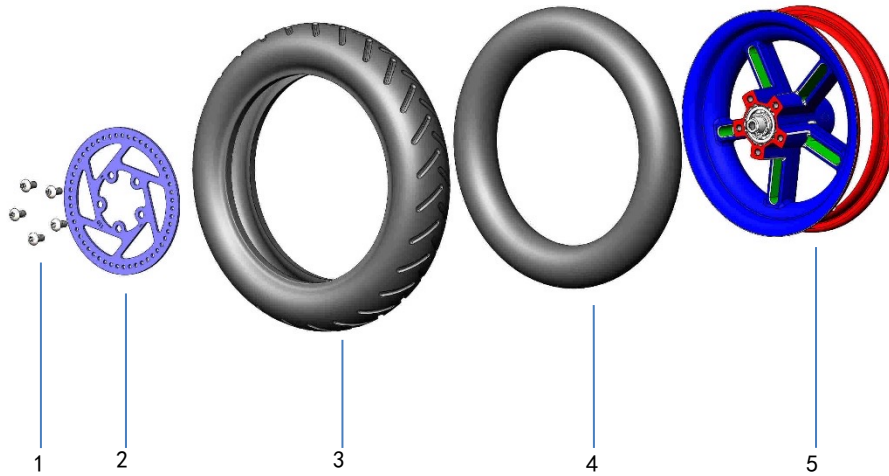
# Accelerator-Mi Scooter

- 1、Accelerator Main Assembly
- 2、Hexagon Cylinder head screws-M4\*12



# Rear Hub Assembly

- 1、Hexagon Semi circle  
head-M5\*10- (Disk  
Brake\*5)
- 2、 Brake Disc
- 3、 Tyre
- 4、 Inner Tube
- 5、 Rear hub assembly





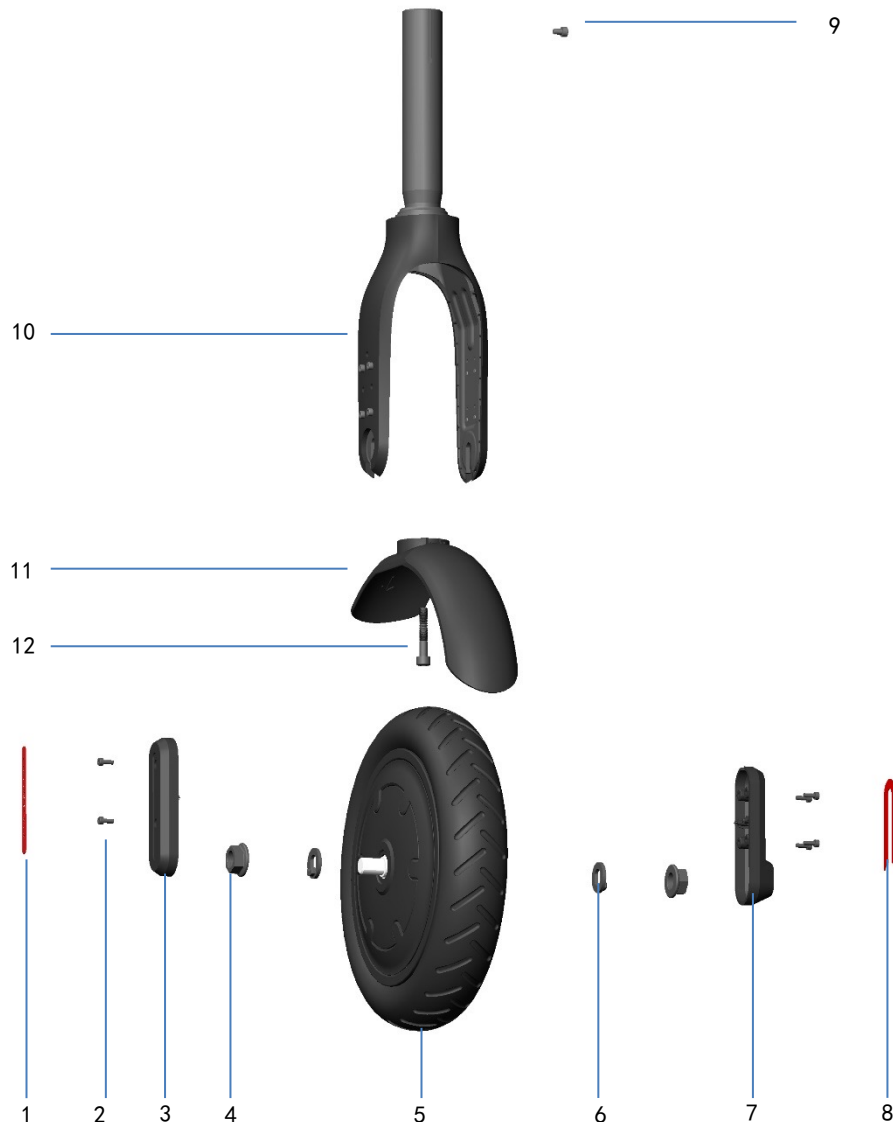
# Rear Fender Assembly

## 1、Rear Fender Assembly



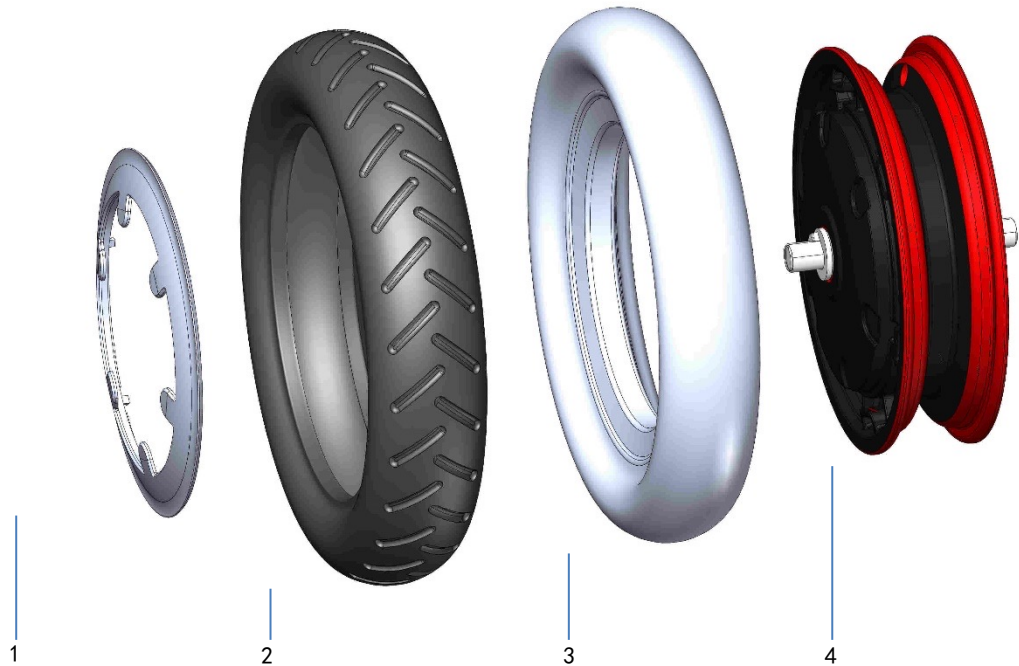
# Front Hub Assembly

- 1、PC Decorative Strip with Words
- 2、Hexagon cylinder head screws-M3\*8 (Lock Decorative Cover-Front & Rear Fork、Cable Cover-Motor\*6)
- 3、Decorative Cover-Front & Rear Fork
- 4、Hexagon Flange Nut-M12\*H10 (2Pcs)
- 5、Hub Motor Assembly& wheel Decoration Ring Pro (No include 2 pcs Flange nuts)
- 6、Spline
- 7、Motor Protective Cable Cover
- 8、Motor Protective Cable Cover Decorative Strip
- 9、Hexagon Cylinder head screws-M4\*6 (1Pcs)
- 10、Front Fork Assembly
- 11、Front Fender
- 12、Hexagon cylinderhead large assembled screw-M6\*30



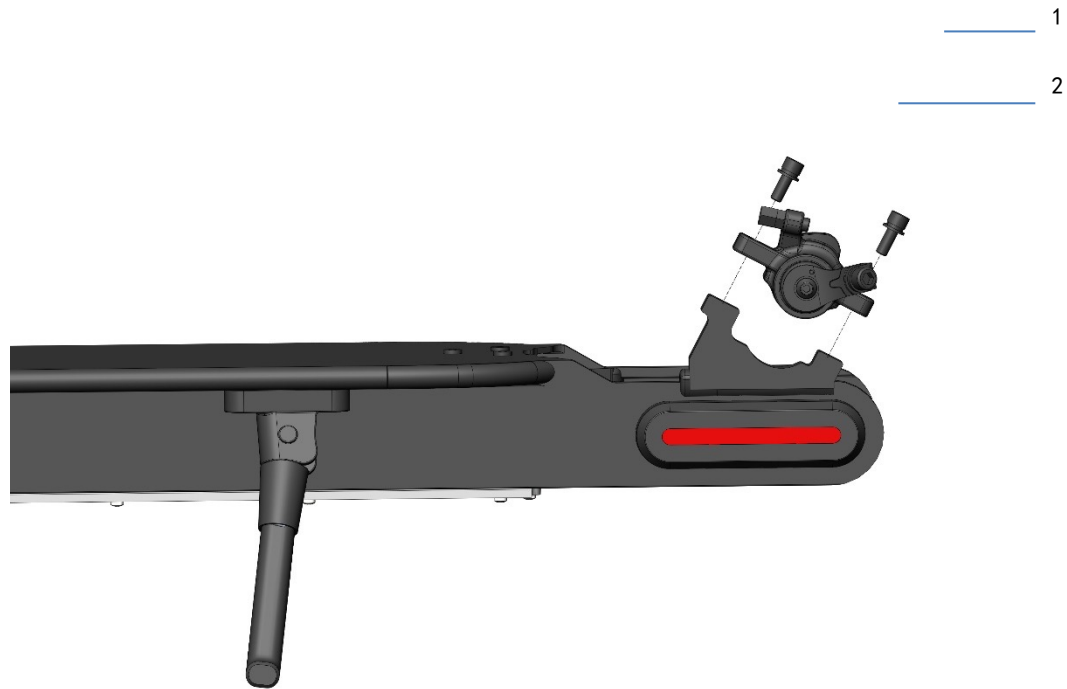
# Hub Motor Assembly& Hub Motor Decoration Ring

- 1、 Wheel Decorative Ring
- 2、 Tyre
- 3、 Inner Tube
- 4、 Wheel Hub Motor Assembly



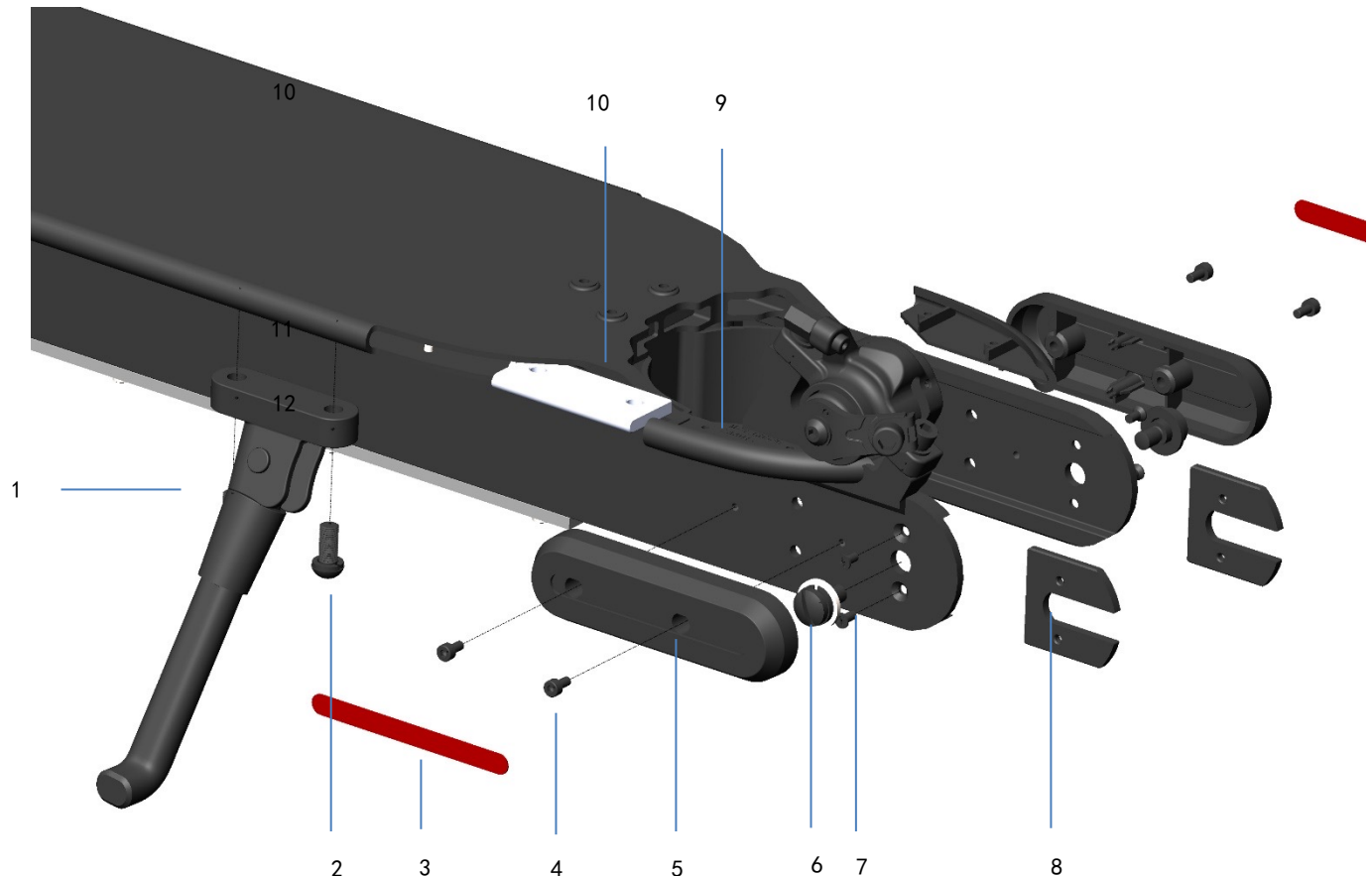
# Disc Brake Base

- 1、Hexagon Semicircle  
head-M5\*16 Assembled  
Screw (2Pcs)
- 2、Disc Brake Base



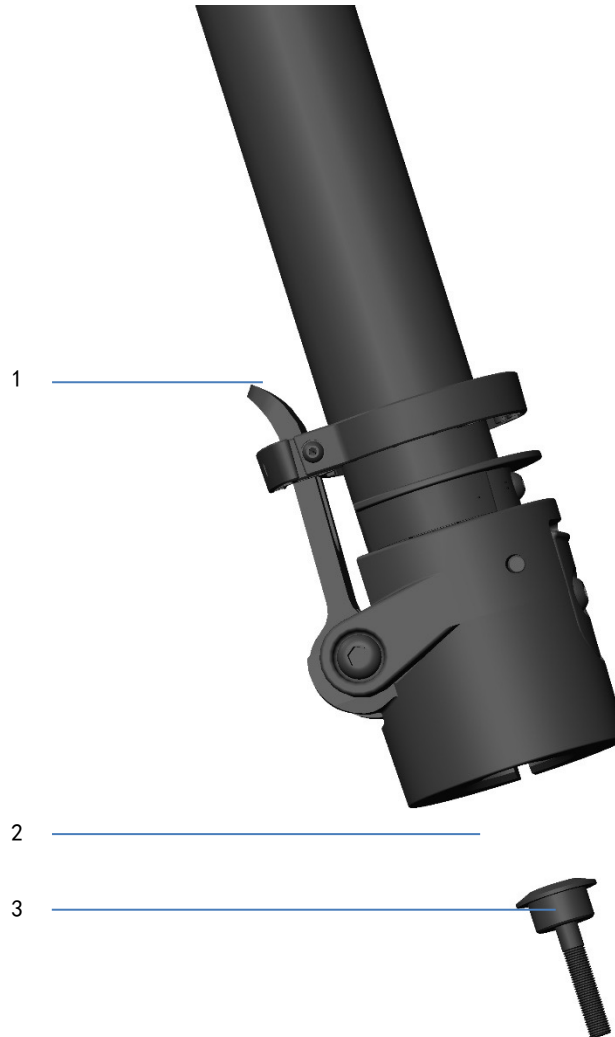
# Kickstand&Decorative Cover-Front & Rear Fork&Rear Stiffening Plate

- 1、Kickstand Assembly
- 2、Hexagon socket cap screws-M6\*14-Half Round Head (Lock kicstand\*2)
- 3、PC Decorative Strip
- 4、Hexagon Cylinder Head screw-M3\*8 (Decorative Cover-Front & Rear Fork\*4)
- 5、Front & Rear Fork Decorative Cover
- 6、Hexagon spherical surface Head Screw-M6\*7\*11 (Lock Rear Hub kits\*2)
- 7、Cross cylinder head tapping screw-M3\*6 (Lock Rear Stiffening Plate\*4)
- 8、Rear Reinforce Plate
- 9、Rear Two Sides Bumper Strip
- 10、Kickstand Installation Plate



# Folded Standpipe

- 1、Collar-Folded Standpipe lock
- 2、Axle Sleeve
- 3、Hexagon socket cap screws-M6\*35 (Fix the connection Folded Standpipe and Front Folded)



1、Standpipe Cable Plug-Mi Electric Scooter

2、Pipe Chute Cable Plug-Mi Electric Scooter

3、Battery Cover (With Foam)-Mi Electric Scooter

1



2

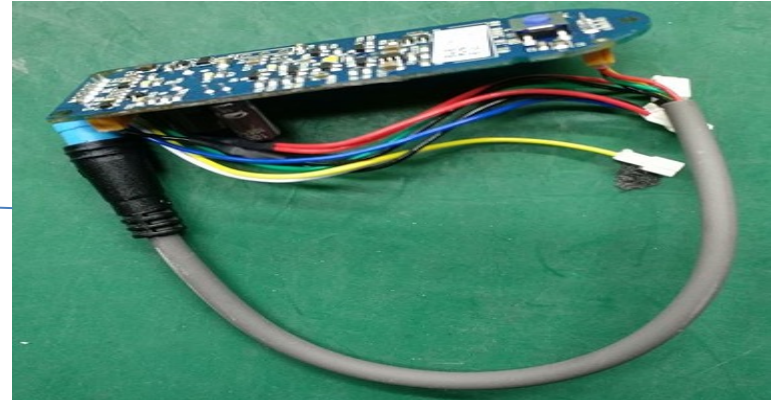


3



- 1、LED Board-Mi Electric Scooter-Black
- 2、Controller assembly Pro
- 3、Steering kits-Front Fork-Black

1



2



3





- 1、Stem-Mi Electric Scooter
- 2、Cable Protector Plug-Left
- 3、Cable Protector Plug-Right
- 4、Front Dashboard Cover
- 5、Rear DashBoard Cover assembly

1



2

3

4

5