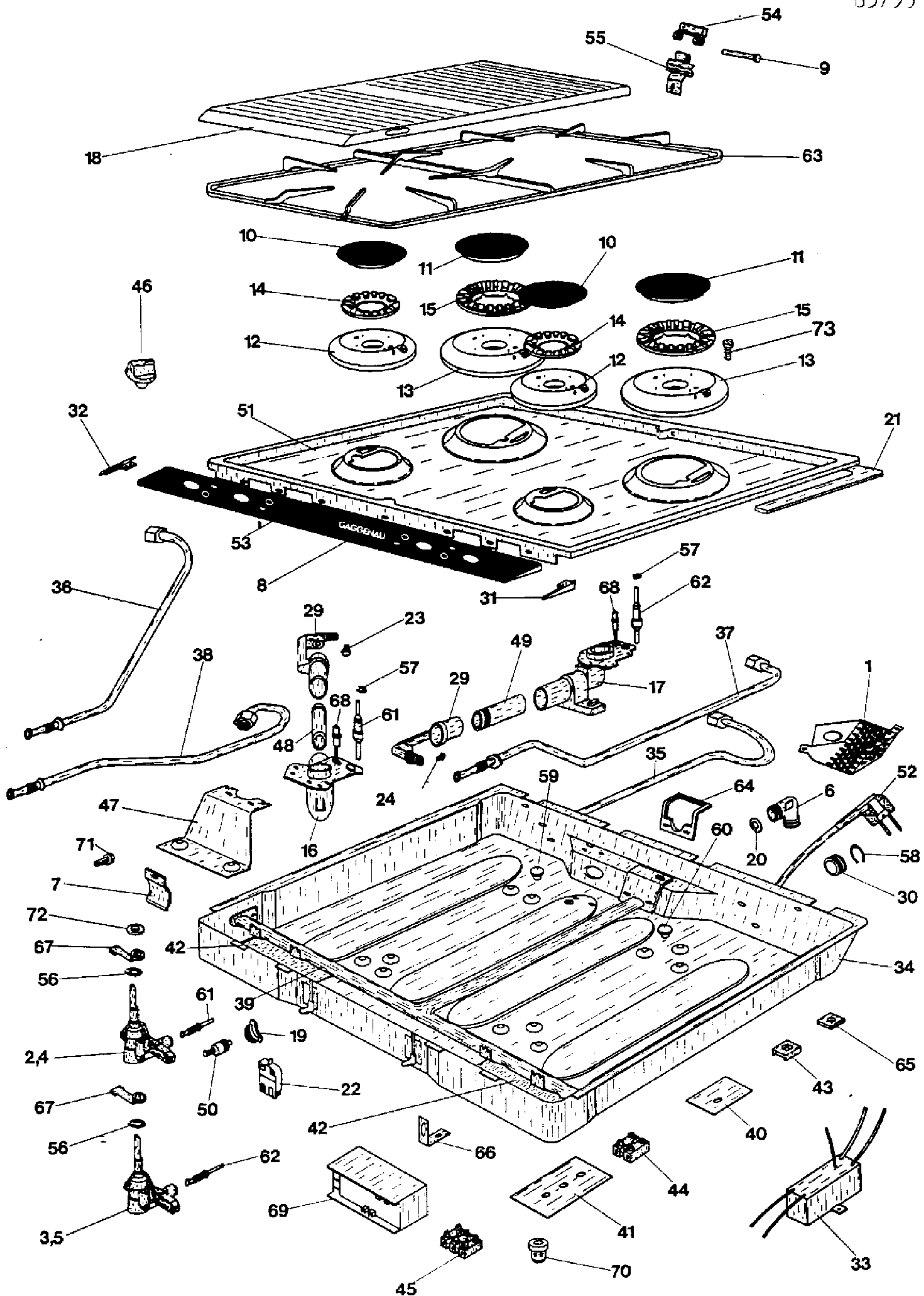


Stueckliste E630215

KGA223204	KGA223214	KGA223224	KGC223204	KGC223214	KGC223224	KGC223254
KGF223204	KGF223214	KGF223224	KGF223227	KGF223228	KGF223254	KGF223258
KGN223204	KGN223214	KGN223224	KG0223214	KGS223204	KGS223214	KGS223224
KG223204	KG223214	KG223224	KG223254	KG223258		

Pos.	Mat-Nr.	Bezeichnung	Description
1	323632	Abdeckgitter	Covering Grid
2	097635	Allgashahn A-Br. prog. 0,23 D	A11 gas valve A-burner prog. 0,23 D
	324102	Allgashahn A-Brenner prog. 0,41 NL	All gas valve A-Burner prog. 0,41 NL
	323435	Allgashahn A-Brenner nicht progr 0,23 A	All gas valve A-burner not progr. 0,23 A
	097636	Allgashahn A-Brenner progr. 0,29 0	All gas valve A-burner progr. 0,29 0
3	320057	Allgashahn B-Brenner prog. 0,34 D	All gas valve B-burner prog. 0,34 D
	320183	Allgashahn B-Brenner prog. 0,49 NL	All gas valve B-burner prog. 0,49 NL
	155999	Allgashahn B-Brenner nicht prog. 0,23 A	All gas valve B-burner not prog. 0,23 A
	155998	Allgashahn B-Brenner progr. 0,4 0	All gas valve B-burner progr. 0,4 0
4	097636	Allgashahn A-Brenner prog. 0,29 F	All gas valve A-turner prog. 0,29 F
5	155998	Allgashahn B-Brenner prog. 0,40 F	All gas valve B-burner prog. 0,40 F
6	156094	Anschlusswinkel F	Connecting angle F
	156095	Anschlusswinkel D	Connecting angle D
7	320833	Befestigungslasche;	Fixing lashing
8	291772	Blendeneinlage	Insert
9	156810	Bolzen	Bolt
10	155975	Brennerdeckel A-Brenner	Burner lid A-burner
11	155976	Brennerdeckel B-Brenner	Burner lid B-burner
12	323181	Brennerkopf A-Brenner	Burner head A-burner
	097666	Brennerkopf A-Brenner A	Burner head A-burner A
	156081	Brennerkopf B-Brenner	Burner haed B-burner
	156082	Brennerkopf B-Brenner A	Burner head B-burner A
14	156155	Brennerring A-Brenner	Burner ring A-burner
	324061	Brennerring kpl. A-Br. A	Burner ring compl. A-burn
15	156156	Brennerring B-Brenner	Burner ring B-burner
	155525	Brennerring kpl. B-Br. A	Burner ring compl. B-burn
16	156024	Brennerrohr A-Brenner	Burner tube, A-burner
17	156025	Brennerrohr B-Brenner	Burner tube B-burner
18	292446	Deckel, Edelstahl	Lid stainless steel
	291049	Deckel email. weiss	Lid, enamelled, white
	210914	Deckel, email., mokka	Lid, enamelled mocca
	210915	Deckel, email., agave	Lid, enamelled, agave
	210916	Deckel, email., brasfl	Lid, enamelled, brazil
	210917	Deckel, email., terre d'al	Lid, enamelled, terre d'al
	210919	Deckel, email., bahamab.	Lid, enamelled, bahamabeig
	210920	Deckel, email., majolika	Lid, enamelled, majolika

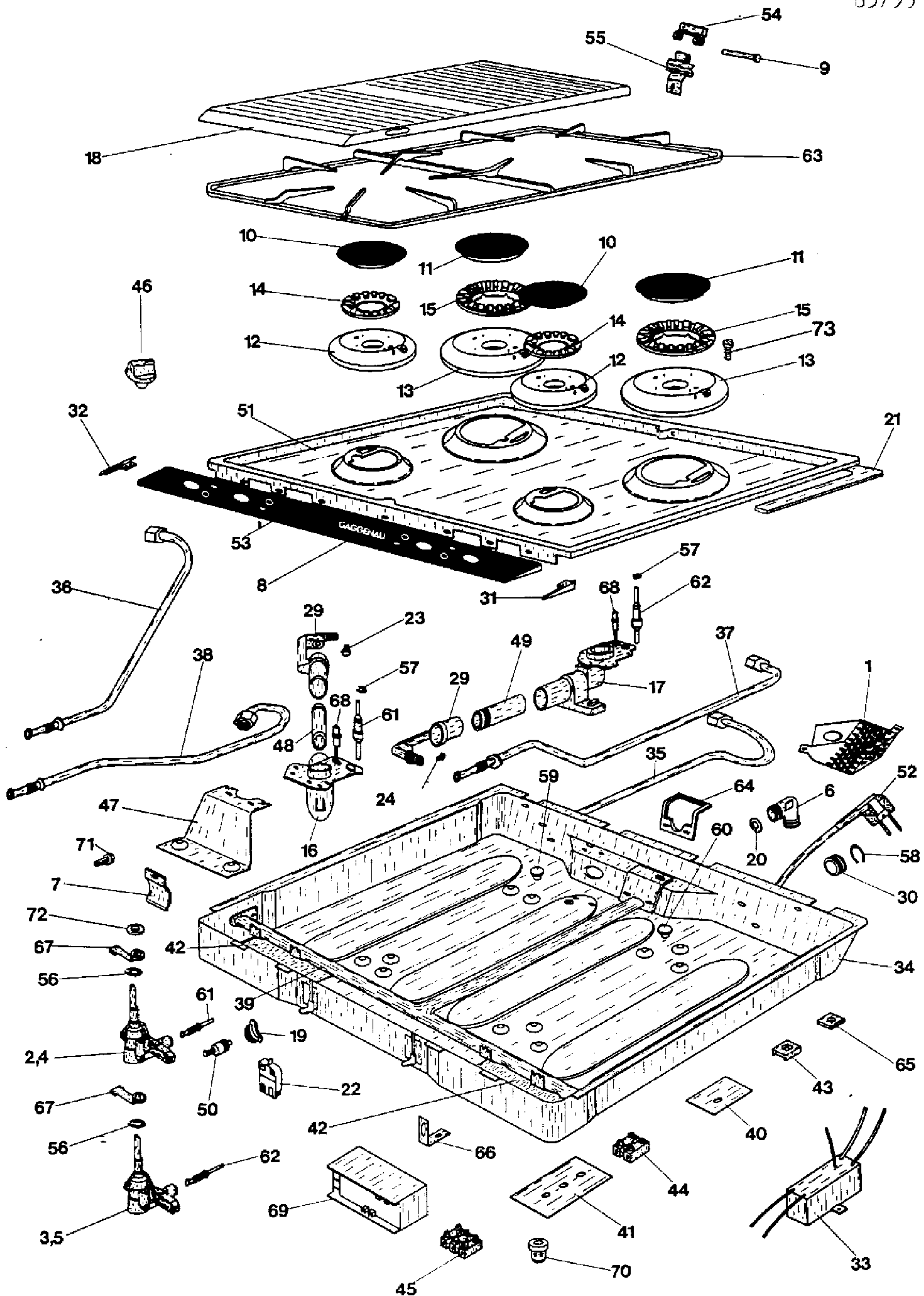




Stueckliste E630215

KGA223204	KGA223214	KGA223224	KGC223204	KGC223214	KGC223224	KGC223254
KGF223204	KGF223214	KGF223224	KGF223227	KGF223228	KGF223254	KGF223258
KG223204	KG223214	KG223224	KG223254	KG223258		

Pos.	Mat-Nr.	Bezeichnung	Description
19	156055	Dichtung	Gasket
20	155426	Dichtung/Rohrende	Gasket, tube end
21	156423	Dichtungsband 5x20x2200	Gasket 5x20x2200
22	156614	Druckschalter	Push-button
		Duesen Deutschland	Nozzles Germany
23	156130	Duese A-Br. 93 Erdgas H	Nozzle A-burner 93 nat.g
	156135	Duese A-Br. 58 Fluessg.	Nozzle A-burner 58 liq.g
	156132	Duese A-Br.107 Erdgas L	Nozzle A-burner107 nat.g
	156137	Duese A-Br.170 Stadtgas A	Nozzle A-burner170 town
	156139	Duese A-Br.170 " " B	Nozzle A-burner170 " B
	156190	Duese A-Br.1.03 N-Gas	Nozzle A-burner1,03 N-ga
	156133	Duese A-Br.1,95 St.gas	Nozzle A-burner1,95 town
	320227	Duese A-Brenner 1,95 St.gas G 140	Nozzle A-burner1,95 town G 140
240	156131	Duese B-Br. 116 Erdgas H	Nozzle B-burner 116 nat.
	156136	Duese B-Br. 73 Fluessiggas	Nozzle B-burner 73 Liqu.c
	320238	Duese B-Br. 127 Erdgas L	Nozzle B-burner 127 nat.c
	156138	Duese B-Br. 250 St.gas	Nozzle B-burner 250 town
	156140	Duese B-Br. 240 St.gas	Nozzle B-burner 240 town
	156191	Duese B-Br. 125 N-Gas	Nozzle B-burner 125 N ga-
	156134	Duese B-Brenner	Nozzle B-burner
	323113	Duese B-Br. 290 St.gas G140	Nozzle B-burner 290 town
	320607	Duesen Deutschland Ost kpl.	Nozzle Germany East compl
		Duesen Frankreich	Nozzles France
23	156130	Duese A-Brenner 93 Erdg.H	Nozzle A-burner 83 nat gas
	156133	Duese A-Brenner 68Butan/Pr.	Nozzle A-burner 68 Butan,
	321983	Duese A-Brenner 170 A	Nozzle A-burner 170 A
		Air/Propane/Air Butane	Air/Propane/Air-Butane
24	322933	Duese B-Brenner 116 ErdgH	Nozzle B-burner nat gas I
	156134	Duese B-Br. 87 But/Prop.	Nozzle B-burner 87 bu/prs
	321985	Duese B-Br. 250 A	Nozzle B-burner 250 A
		Air-propane/Air-butane	Air-propane/Air-butane
		Duesen Oesterreich	Nozzles Austria
23	156130	Duese A-Br. 93 ERdg. H	Nozzle A-burner nat.gas I
	156135	Duese A-Br. 58 Flue.gas	Nozzle A-burner 58 liq.g,
	156132	Duese A-Br.107 Erdg. L	Nozzle A-burner 107 nat.
	291801	Duese A-Br. 185 St.gas	Nozzle A-burner 185 town
24	156131	Duese B-Br. 116 Erdg. H	Nozzle B-burner 116 nat.
	156136	Duese B-Br. 73 Fluessg.	Nozzle B-burner 73 liq.g
	320238	Duese B-Br.127 Erdg. L	Nozzle B-burner 127 nat.
	156138	Duese B-Br.250 Stadtg.	Nozzle B-burner 250 town
		Duesen Schweiz	Nozzles Swiss
23	156130	Duese A-Br. 93 Erdg.H.	Nozzle A-burner 93 nat.g
	156133	Duese A-Br. 68 Butan/pr.	Nozzle A-burner 68 butan
	321983	Duese A-Br. 170 A	Nozzle A-burner 170 A
	156132	Duese A-Br. 107 ErdgasL	Nozzle A-burner 107 nat.
	156137	Duese A-Br. 170 Stadtg.	Nozzle A-Burner 170 town

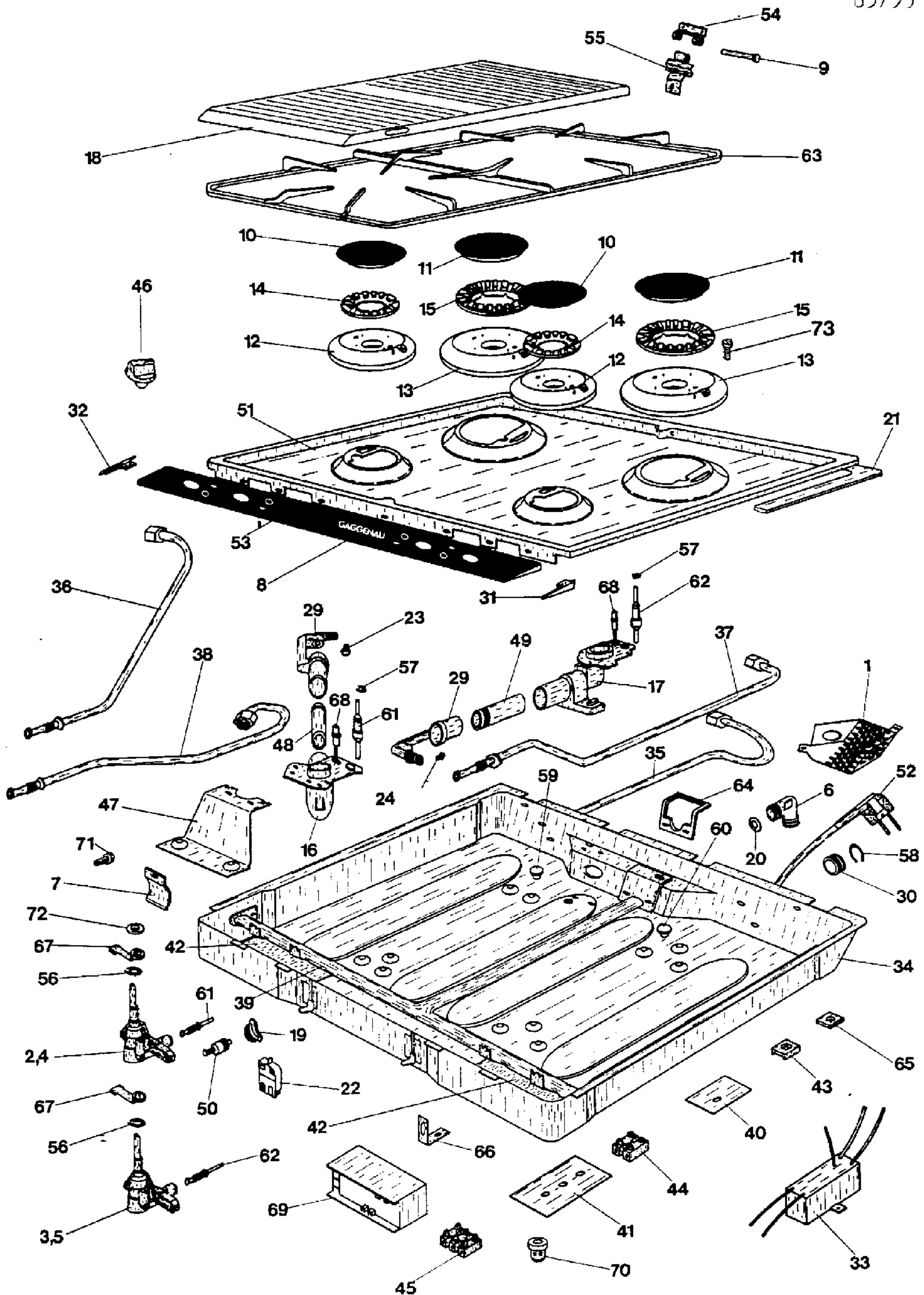


Stueckliste E630215

KGA223204	KGA223214	KGA223224	KGC223204	KGC223214	KGC223224	KGC223254
KGF223204	KGF223214	KGF223224	KGF223227	KGF223228	KGF223254	KGF223258
KGN223204	KGN223214	KGN223224	KG0223214	KGS223204	KGS223214	KGS223224
KG223204	KG223214	KG223224	KG223254	KG223258		

Pos.	Mat-Nr.	Bezeichnung	Description
	156134	Duese B-Br. 87 But/Pr.	Nozzle B-burner butan/pr.
	321985	Duese B-Br. 250 A	Nozzle B-burner 250 A
		Air-Propane/Air Butane	Air-Propane/Air Butane
	320238	Duese B-Brenner 127 Erdg.L	Nozzle B-burner 127 nat.g
	156138	Duese B-Bren. 250 Stadtg.	Nozzle B-burner 250 town
		Duesen Niederlande	Nozzles Netherlands
23	321872	Duesen A-Brenner 1,06 Erdg.L	Nozzle A-burner 1,06 nat
24	324023	Duesen B-Brenner 1,24 "	Nozzle B-burner 1,24 nat
25	097618	Druckregler KG0	Pressure controller
26	323590	Druckfeder KG0	Pressure spring
29	321810	Duesenstock	Burner nozzle equipment
30	321156	Durchfuehrungsbuchse	Rubber socket
31	156012	Endstueck re	End piece, right
32	156013	Endstueck li	End piece, left
33	155690	Entstoerkondensator D	Anti-interference-capacit
34	233232	Gehaeusewanne KG,KGF,KGA	Housing, KG,KGF,KGA
		KGC, KGN	KGC, KGN
	097085	Gehaeusewanne KG0, KHS	Housing, KG0, KGS
35	321879	Hahnleitung	Gas pipe
36	291738	Hahnleitung	Gas pipe
37	291739	Hahnleitung	Gas pipe
38	321743	Hahnleitung	Gas pipe
39	291737	Hahnrohr	Gas pipe
40	322320	Isolierpapier	Insulating paper
41	098053	Isolierpapier D	Insulating paper D
42	322312	Isolierpapier 143x52	Insulating paper 143x52
	323593	Isolierplatte KG0	Insulating plate KG0
43	321289	Klemmbuegel	Clamping bracket
44	320701	Klemmleiste 2pol.	Terminal connector 2 pole
	323550	Klemmleiste 2pol.	Terminal connector 2 pole
45	320614	Klemmleiste 3pol.	Terminal connector 3 pol.
46	156577	Knebel	Knob
47	156063	Konsole	Console
48	322229	Luftregul.-huelse A-Br.	Air regulator A-burner
	156029	Luftregul.-huelse A_Br.	Air regulator A-burner
49	322232	Luftregul.-huelse B-Br.	Air regulator B-&rner
50	156151	Magneteinsatz	Magnet insert
51	211321	Muide, Edelstahl	Hob, stainless steel
	211324	Mulde Edelstahl A	Hob, stainless steel A
	210554	Mulde, email. weiss	Hob, enamelled white
	210571	Mulde, email. weiss A	Hob, enamelled white A
	210555	Mulde, email. mokka	Hob, enamelled mokka





Stueckliste E630215

KGA223204	KGA223214	KGA223224	KGC223204	KGC223214	KGC223224	KGC223254
KGF223204	KGF223214	KGF223224	KGF223227	KGF223228	KGF223254	KGF223258
KGN223204	KGN223214	KGN223224	KGO223214	KGS223204	KGS223214	KGS223224
KG223204	KG223214	KG223224	KG223254	KG223258		

Pos.	Mat-Nr.	Bezeichnung	Description
	233234	Mulde, email. agave	Hob, enamelled, agave
	210572	Mulde, email.agave A	Hob, enamelled, agave A
	210564	Mulde, email.brasil	Hob, enamelled, brasil
	210556	Mulde, email. terre d'als.	Hob enamelled, terre d'a
	210573	Mulde, email. terre d' A	Hob, enamelled, terre d
	210559	Mulde, email. terre d.ch	Hob, enamelled, terre d.ch
	210557	Mulde, email. bahamabeige	Hob, enamelled, bahamabei
	210558	Mulde, email. majolika	Hob, enamelled, majolika
	210574	Mulde, email. majolika A	Hob, enamelled, majolika
52	156930	Netzanschlusskabel m. Steck.	POwer cord with plug
53	291785	Schalterblende m. Einl.	Switch board panel w.inse
	291788	Schalterblende m. Einl. A	Switch board panel A
54	156809	Scharnier Oberteil	Hinge, upper part
55	156811	Scharnier Unterteil	Hinge, lower part
56	320810	Sicherungsring 6x0,7	Guard ring 6x0,7
		DIN 471 /bis 06/88)	DIN 471 (to 06/88)
	321430	Sicherungsscheibe 4x5	Securing washer 4x5
		DIN 6795 ab 6/88	DIN 6795 frim 06/88
57	322231	Sicherungsring	Guard ring
58	321286	Sicherungsring A 14x1	Guard ring 14x1
59	323552	Stopfen 0 6,4	Stopper 0 6.4
60	156016	Stopfen 0 5,3	Stopper 0 5.3
61	320677	Thermoelement 320 lg.	thermocouple 320 lg
62	155952	Thermoelement 450 lg.	Thermocouple 450 lg.
63	291763	Topfrost	Pan support
	290722	Topfrost A	Pan support A
64	321991	Unterlage	Base
65	321400	Vierkantmutter	Square nut
66	324019	Winkel	Angle
67	156172	Wippe	Balance
68	097670	Zuendkerze	Spark plug
69	156165	Zuendtrafo F	Ignition transformer F
	097674	Zuendtrafo D, A	Ignition transformer D,A
70	156972	Zugentlastung	Cable traction relief
71	320702	Befestigungsschraube	Fixing screw
72	321297	Distanzring	Distance piece
		von 5/87 bis 6/88	von 5/87 bis 6/88
73	155432	Schraube M4x12	SCrew M4x12
74	324114	Isoliertuelle	Sleeve