

HISTORY

KDL-40/46D3550

Model Name : KDL-40/46D3660

SERVICE MANUAL

Click on Page Number to display detail of changes.

[illegible]

SERVICE MANUAL

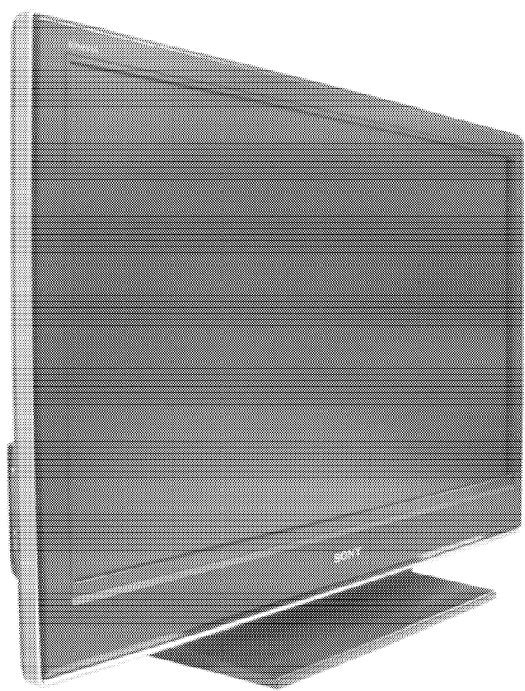
Differences Manual

Self Diagnosis
Supported model

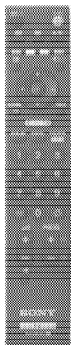
WAX3F CHASSIS

MODEL	COMMANDER	DEST	MODEL	COMMANDER	DEST
KDL-40D3660	RM-ED009	AEP	KDL-46D3660	RM-ED009	AEP
KDL-40D3550	RM-ED009	AEP	KDL-46D3550	RM-ED009	AEP
KDL-40D3550	RM-ED009	UK	KDL-46D3550	RM-ED009	UK

Note: This Service Manual shows only the differences from KDL-40D3400/KDL-40D3500.
Refer to the Service Manual (9-927-590-xx) of KDL-40D3400/KDL-40D3500, also for repair.



KDL-40D3660 / KDL-46D3550



RM-ED009

FLAT PANEL COLOR TV
SONY®

TABLE OF CONTENTS

<i>Section</i>	<i>Title</i>	<i>Page</i>
5. EXPLODED VIEWS		
5-2.	Rear Cover, Stand & Bezel	3

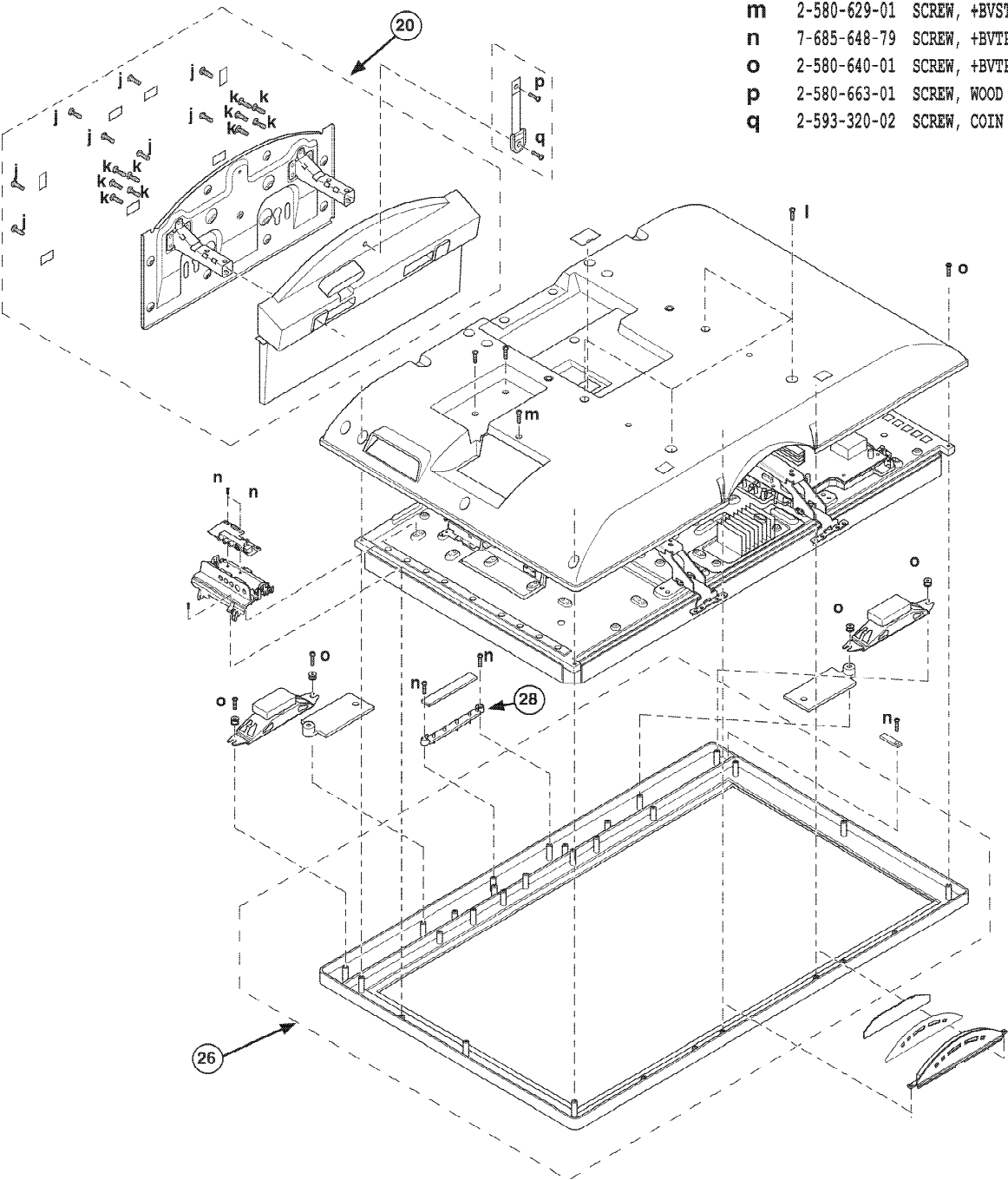
WARNING !!

AN ISOLATION TRANSFORMER SHOULD BE USED DURING ANY SERVICE WORK TO AVOID POSSIBLE SHOCK HAZARD DUE TO LIVE CHASSIS, THE CHASSIS OF THIS RECEIVER IS DIRECTLY CONNECTED TO THE POWER LINE.

SAFETY-RELATED COMPONENT WARNING !!

COMPONENTS IDENTIFIED BY SHADING AND MARKED Δ ON THE SCHEMATIC DIAGRAMS, EXPLODED VIEWS AND IN THE PARTS LIST ARE CRITICAL FOR SAFE OPERATION. REPLACE THESE COMPONENTS WITH SONY PARTS WHOSE PART NUMBERS APPEAR AS SHOWN IN THIS MANUAL OR IN SUPPLEMENTS PUBLISHED BY SONY.

5-2. REAR COVER, STAND & BEZEL



- j 2-580-644-01 SCREW, +KTP2 3X8
- k 2-580-607-01 SCREW, +PSW M5X12
- l 2-580-608-01 SCREW, +PSW M5X16
- m 2-580-629-01 SCREW, +BVST 3X8
- n 7-685-648-79 SCREW, +BVTP 3X12 TYPE2 IT-3
- o 2-580-640-01 SCREW, +BVTP2 4X16
- p 2-580-663-01 SCREW, WOOD 3.8X20
- q 2-593-320-02 SCREW, COIN (M6X18)

REF.NO.	PART.NO	DESCRIPTION	REMARK	REF.NO.	PART.NO	DESCRIPTION	REMARK
20	*X-2187-437-1	STAND (ML) ASSY	(40 inches)	26	X-2187-585-2	BEZEL (40DE2) ASSY	(40 inches)
	*X-2187-438-1	STAND (L) ASSY	(46 inches)		X-2187-586-2	BEZEL (46DE2) ASSY	(46 inches)

