

Service
Service
Service



Philips Domestic Appliances and Personal Care

Service Manual

PRODUCT INFORMATION

- Product meets the requirements regarding interference suppression on radio and television.
- After the product has been repaired, it should function properly and has to meet the safety requirements as laid down officially established at this moment.

TECHNICAL INFORMATION

- Voltage : 220 - 240 V
- Frequency : 50 - 60 Hz
- Power consumption : 2000 W
- Colour setting : White/corn husk yellow
- Basket (mesh) : 6 x 6 mm
- Contents of oil : 2500 cc
- Fuse cut-off temperature : 251 °C
- Oil temperature setting : 150 - 190 °C
- SAP coding : HD6141/80

DISASSEMBLY AND RE-ASSEMBLY ADVISE

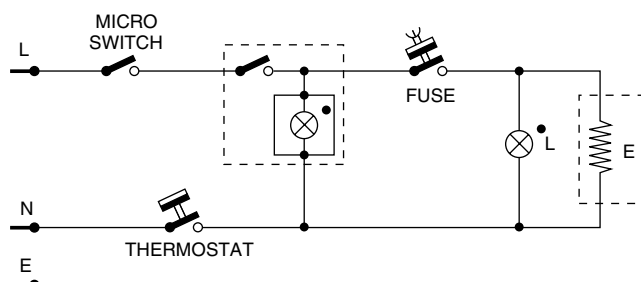
- No specific issues.

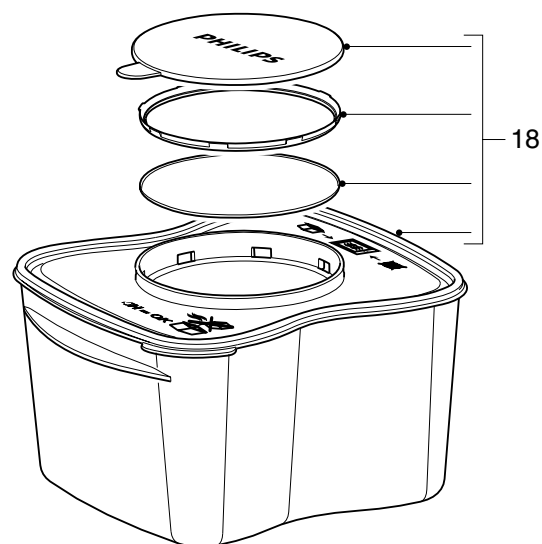
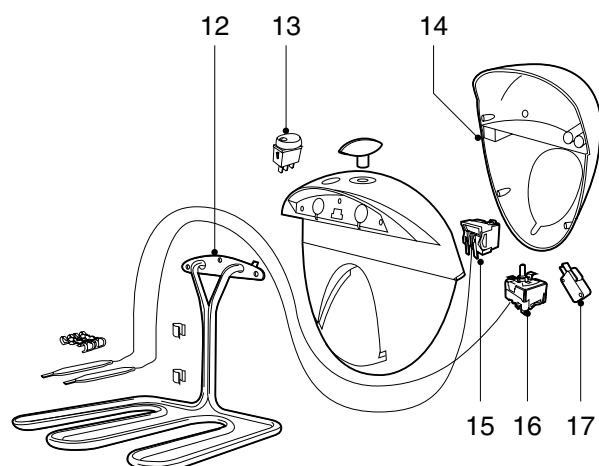
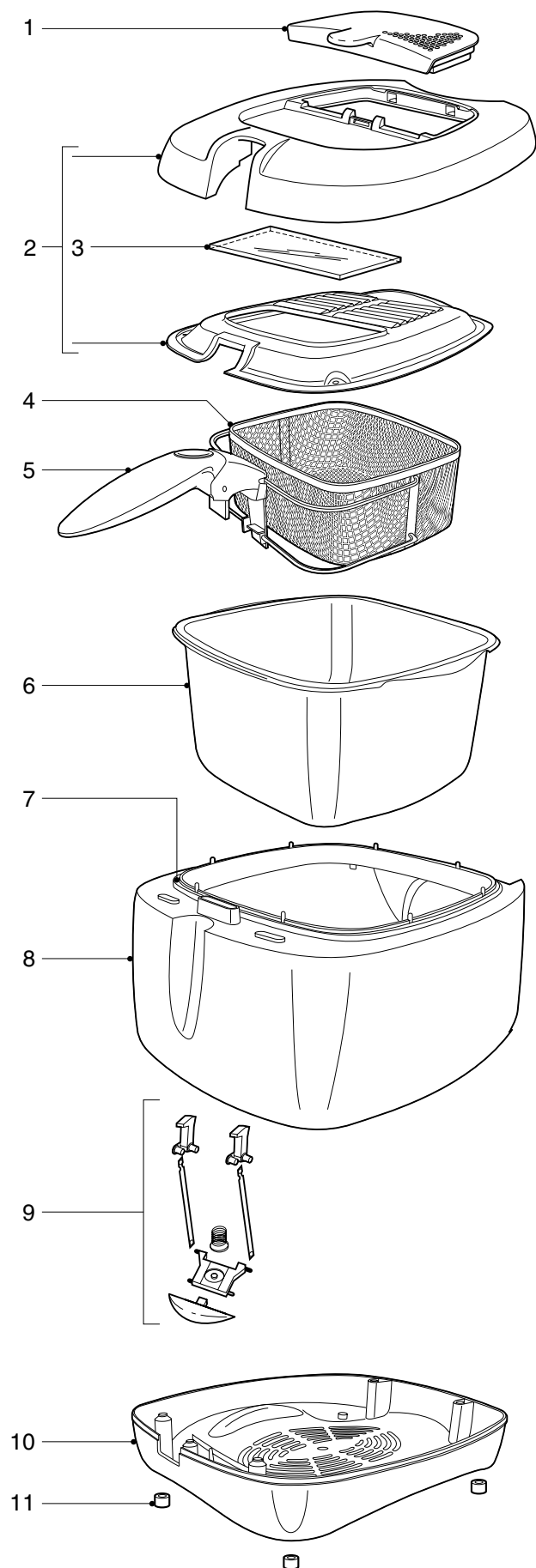
REPAIR INSTRUCTION

- No specific issues.

OPTIONAL (accessories)

- For oil filtering it is possible to order separate a oil container.
Commercial number is HD6902, service number 9965 000 27175, see item 18 in the exploded view.
- Removable filter 9965 000 27164, see item 1 in the exploded view.





Pos	Service code	Description
1	9965 000 27164	Filter unit, cornhusk yellow
2	9965 000 27165	Assembled lid white, excl. filter
3	9965 000 27166	Glass window
4	9965 000 27167	Basket, small
5	9965 000 27315	Handle, white/silver button
6	9965 000 27168	Bowl small, black teflon coated
7	9965 000 27169	PBT ring
8	9965 000 27170	Housing white, printed HD6141
9	9965 000 27171	Opening set HD6141
10	9965 000 17081	Base, white
11	9965 000 27172	Foot
12	9965 000 09434	Heating element small 2000 W
13	9965 000 27173	On / Off switch, silver
14	9965 000 17083	Back control panel, white
15	9965 000 01830	Fuse SP-001FD settemp 255
16	9965 000 27174	Thermostat NT-141FD-T150
17	9965 000 09441	Microswitch D3V
18	9965 000 27175	Oil cleaning container