

5. REPAIR PARTS LIST

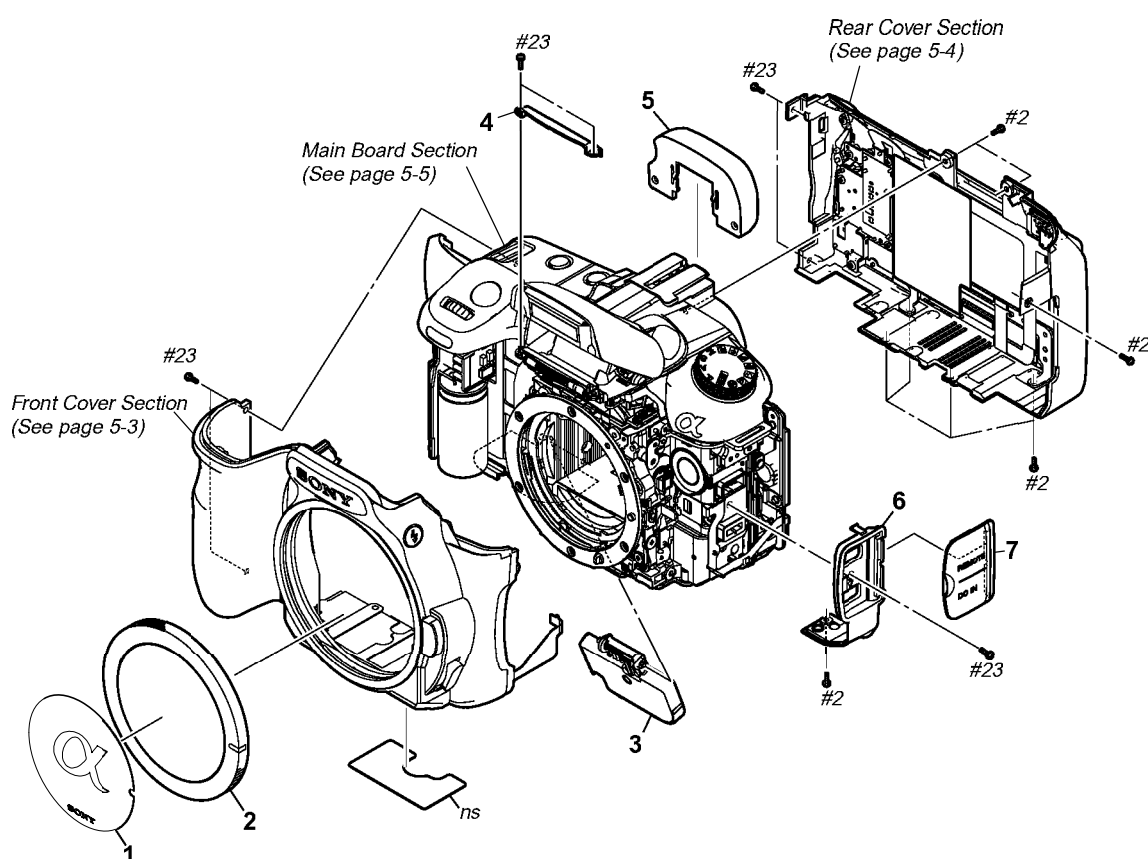
DISASSEMBLY

HARDWARE LIST

5-1. EXPLODED VIEWS

5-1-1. OVERALL SECTION

ns: not supplied



Ref. No.	Part No.	Description
1	2-894-387-01	SEAL, BODY CAP
2	2-688-728-02	CAP, BODY
3	X-2187-837-1	BD BATTERY CASE LID ASSY
4	3-282-855-01	ST STROBOSCOPE ARM COVER
5	X-2187-839-1	CV EYE HOOD ASSY

Ref. No.	Part No.	Description
* 6	3-282-749-02	BD SIDE COVER (L)
7	3-282-750-01	BD DC•REMOTE LID
#2	2-635-562-31	SCREW (M1.7) (Black)
#23	3-080-204-11	SCREW, TAPPING, P2 (Black)

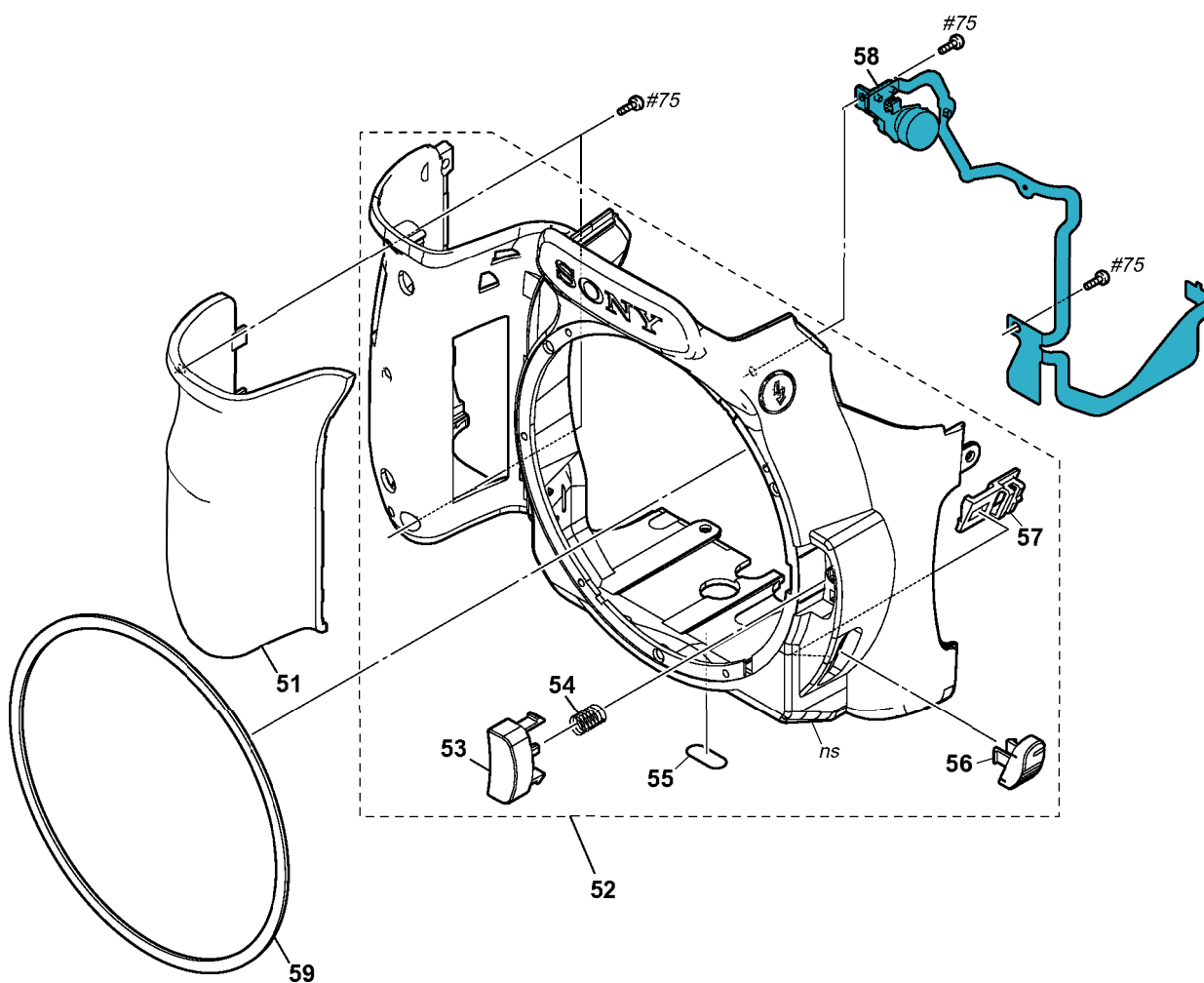
5. REPAIR PARTS LIST

DISASSEMBLY

HARDWARE LIST

5-1-2. FRONT COVER SECTION

ns: not supplied



Ref. No.	Part No.	Description
51	3-288-191-01	CV GRIP COVER (629)
52	X-2189-658-1	CV FRONT COVER ASSY 628
53	3-282-781-02	CT LENS LOCK BUTTON
* 54	3-282-782-01	CT LENS LOCK SPRING
55	3-282-787-01	RUBBER FOOT

Ref. No.	Part No.	Description
56	3-282-783-01	CT FOCUS SELECTION KNOB
* 57	3-282-784-01	CT FC CLICK PLATE
58	1-480-472-11	SWITCH BLOCK, CONTROL (FS62700)
59	X-2187-835-1	CV DECORATION COVER ASSY
#75	2-666-551-01	SCREW, TAPPING, P2 (Silver)

5. REPAIR PARTS LIST

DISASSEMBLY

HARDWARE LIST

5-1-3. REAR COVER SECTION

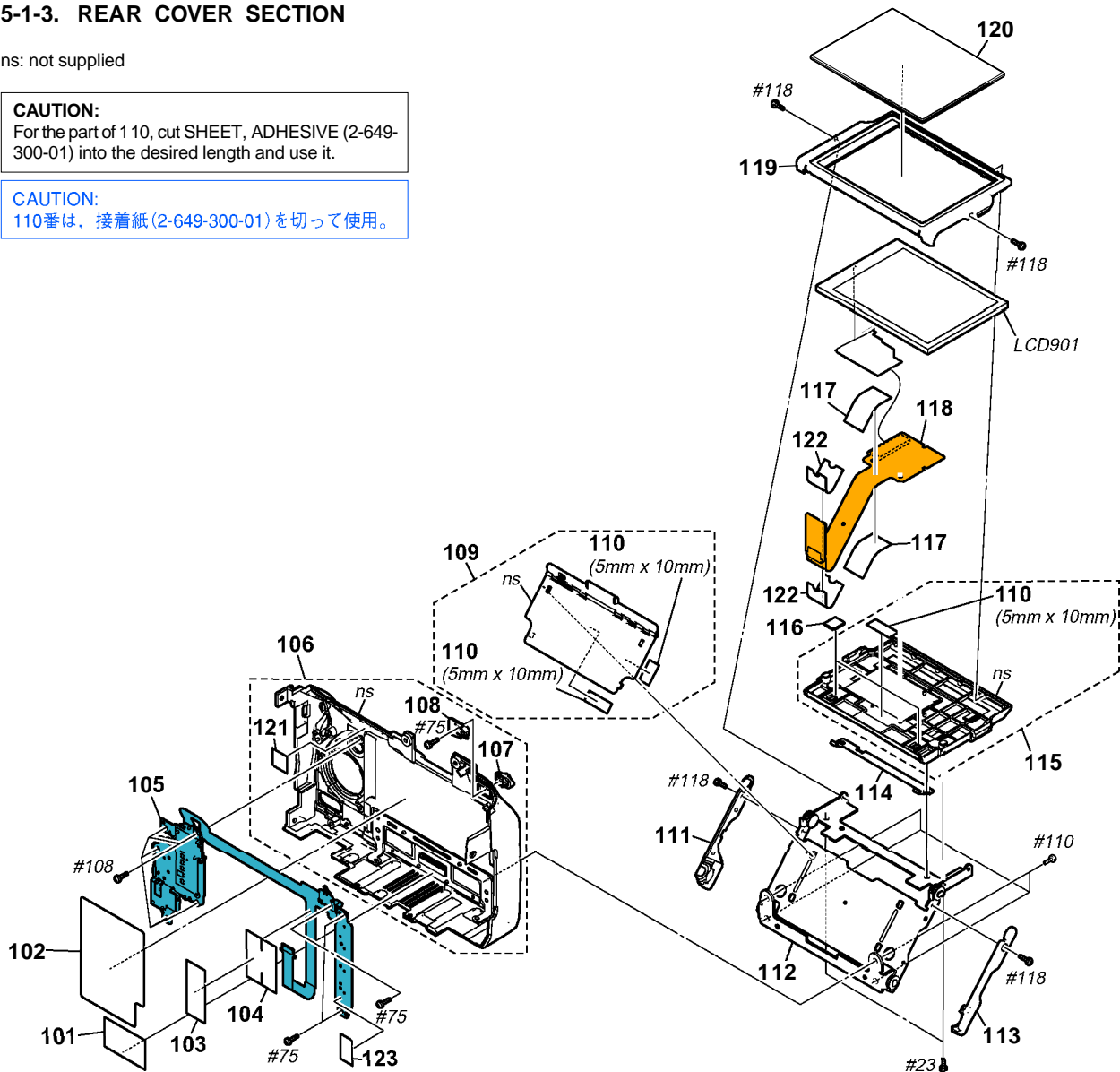
ns: not supplied

CAUTION:

For the part of 110, cut SHEET, ADHESIVE (2-649-300-01) into the desired length and use it.

CAUTION:

110番は、接着紙(2-649-300-01)を切って使用。



Ref. No.	Part No.	Description
* 101	3-290-775-02	CV FLEXIBLE HOLE BLIND SHEET
* 102	3-282-797-01	CV FUSE CHANGE CAUTION LABEL
* 103	3-297-446-01	EM SHIELD INSULATING SHEET
* 104	3-296-153-01	EM RS FPC SHIELD SHEET
105	1-480-473-11	SWITCH BLOCK, CONTROL (RS62700)
106	X-2188-562-2	CV REAR COVER ASSY 629
107	3-282-804-01	CT MAIN SW KNOB
* 108	3-282-805-01	CT MAIN SW CLICK PLATE
109	X-2188-565-1	CV FLEXIBLE COVER ASSY
110	CAUTION	CV FPC TAPE B
111	3-288-197-01	CV HINGE COVER (R)
112	X-2188-563-2	CV LCD HINGE ASSY
113	3-288-198-01	CV HINGE COVER (L)
114	3-288-202-01	EM LCD GROUND PIECE
115	X-2188-815-1	CV LCD LOWER COVER ASSY

Ref. No.	Part No.	Description
* 116	3-298-228-01	EM LCD GASKET
117	3-288-200-01	CV FPC SLIDER SHEET
118	A-1466-493-A	LF-057 FLEXIBLE BOARD, COMPLETE
119	X-2188-564-1	CV LCD UPPER COVER ASSY
120	3-288-203-01	CV LCD WINDOW 629
121	3-085-917-01	SHEET, PROTECTION, BT FLEXIBLE
* 122	3-875-297-01	CV FPC SLIDER SHEET B
123	3-870-313-01	SHEET, AFM FLEXIBLE GUARD
LCD901	8-753-298-16	ACX373AKM-3
#23	3-080-204-11	SCREW, TAPPING, P2 (Black)
#75	2-666-551-01	SCREW, TAPPING, P2 (Silver)
#108	2-695-430-01	SCREW (T1.7), HEAD PAN TAPPING (Black)
#110	2-630-005-21	SCREW (M2), NEW TRUSTER, P2 (Black)
#118	2-655-580-01	SCREW 0+P2 M1.4 NEWTRU-STAR (Black)

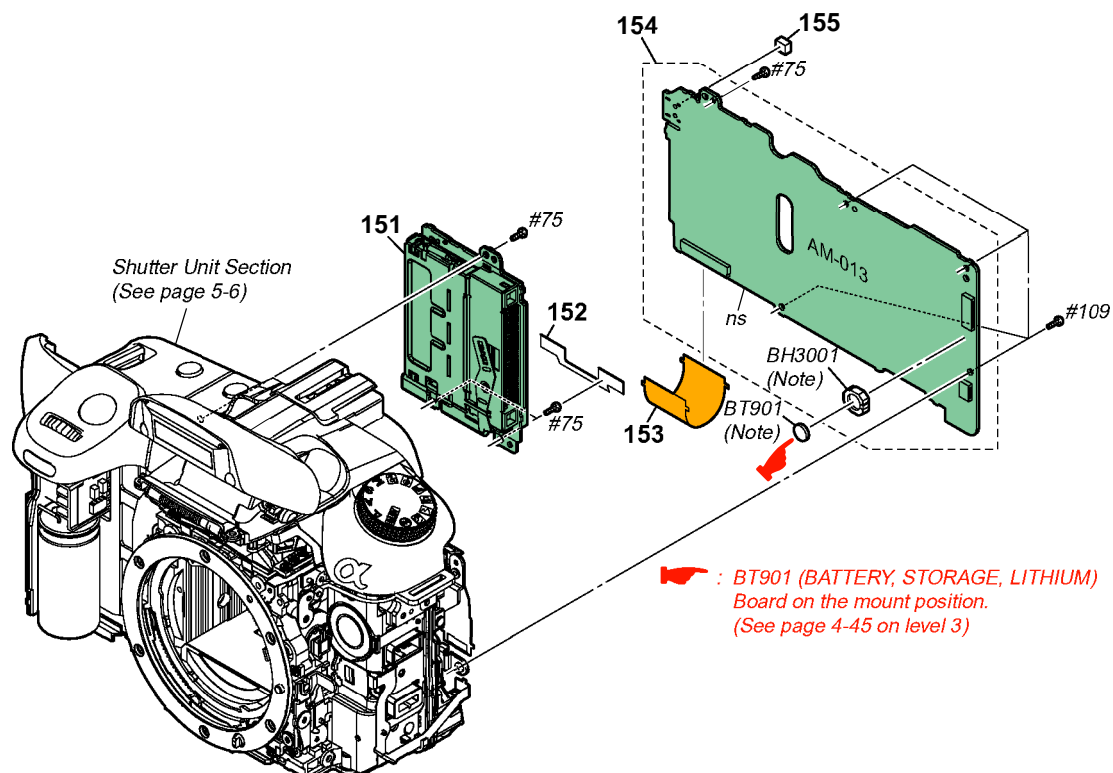
5. REPAIR PARTS LIST

DISASSEMBLY

HARDWARE LIST

5-1-4. MAIN BOARD SECTION

ns: not supplied



CAUTION

Danger of explosion if battery is incorrectly replaced.
Replace only with the same or equivalent type.

注意

電池の交換は、正しく行わないと破裂する恐れがあります。電池を交換する場合には必ず同じ型名の電池又は同等品と交換してください。

Note: Replace the battery holder (BH3001) together when replacing the lithium battery (BT901) on the AM-013 board. (The battery holder removed once cannot be used again.)
When mounting these parts, mount new battery holder first and attach new lithium battery next.

Note: AM-013基板のリチウム電池 (BT901) を交換する場合はバッテリーホルダ (BH3001) も同時に新品に交換してください。(一度使用したバッテリーホルダは再使用できません。)
部品取り付けの際は、先にバッテリーホルダを取り付けてからリチウム電池を装着してください。

¥Refer to page 5-1 for mark △.

Ref. No.	Part No.	Description
151	A-1437-495-A	MM-076 BOARD, COMPLETE
* 152	3-290-170-01	PC BOARD ELECTROSTATIC SHEET
153	1-873-780-11	MM-078 FLEXIBLE BOARD
154	A-1519-925-A	AM-013 BOARD, COMPLETE (SERVICE)
* 155	3-282-823-01	JB LED SHADING SHEET

Ref. No.	Part No.	Description
△ BH3001	1-756-615-41	HOLDER, BATTERY (Note)
△ BT901	1-756-134-12	BATTERY, STORAGE, LITHIUM (Note)
#75	2-666-551-01	SCREW, TAPPING, P2 (Silver)
#109	2-515-483-21	SCREW (M1.7), LOCK ACE, P2 (Black)

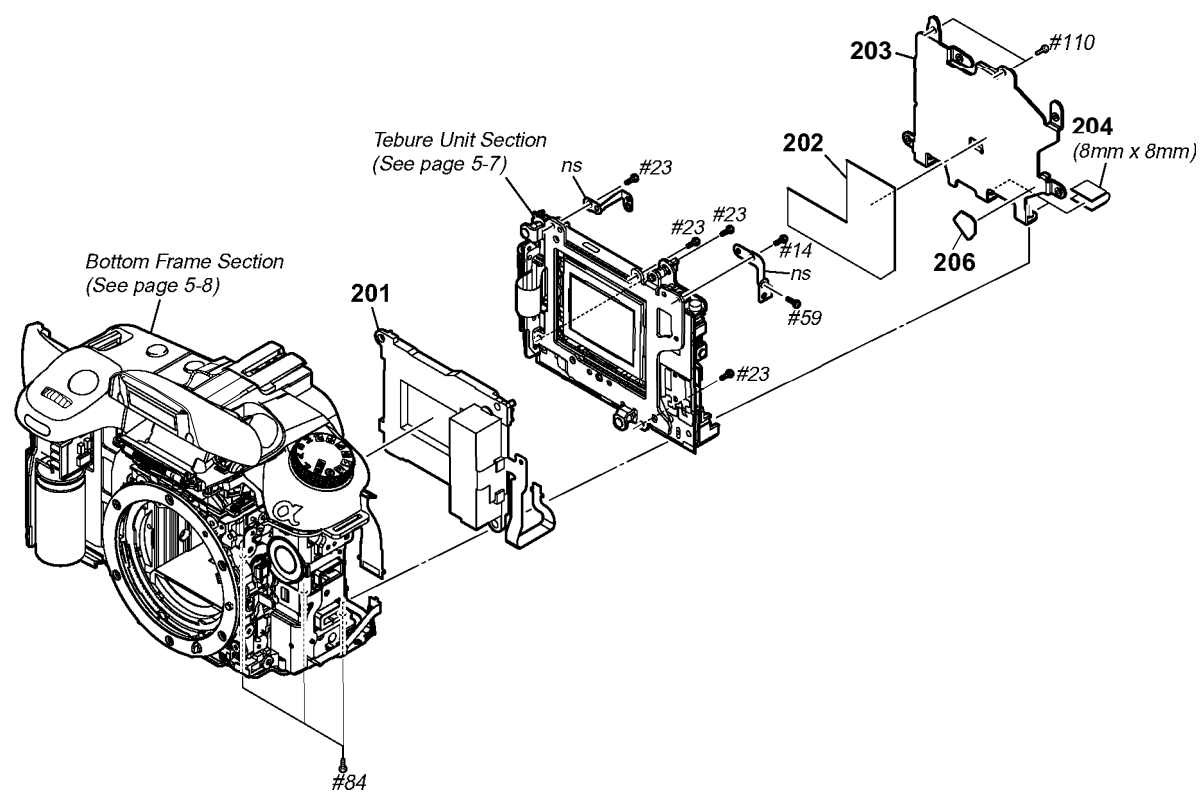
5. REPAIR PARTS LIST

DISASSEMBLY

HARDWARE LIST

5-1-5. SHUTTER UNIT SECTION

ns: not supplied



CAUTION:
For the part of 204, cut WOVEN (T0.25), FABRIC NON (3-076-631-01) into the desired length and use it.

CAUTION:
204番は、T0.25ヒメロン(3-076-631-01)を切って使用。

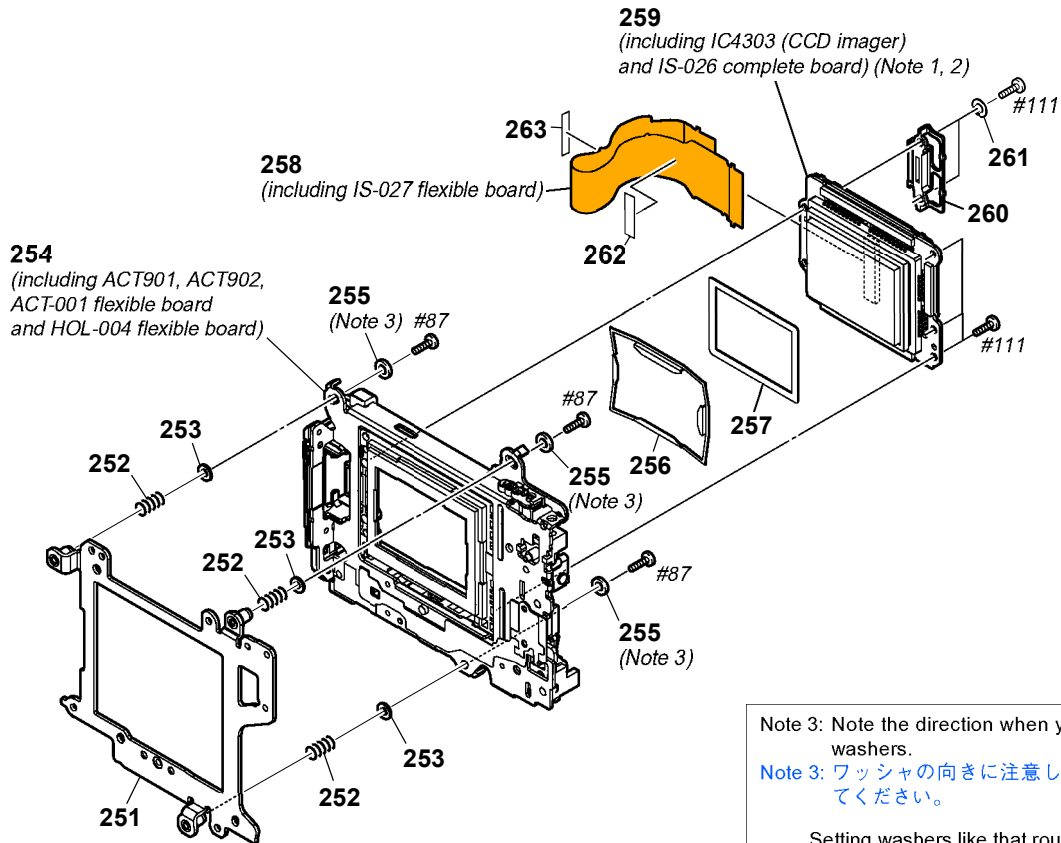
Ref. No.	Part No.	Description
201	1-480-486-11	SHUTTER UNIT
* 202	3-282-825-01	BD MAIN FRAME SHIELD SHEET
* 203	3-282-826-01	BD MAIN FRAME
204	CAUTION	BD VTN INSULATING TAPE
* 206	3-269-906-01	CUSHION, BB

Ref. No.	Part No.	Description
#14	2-599-475-11	SCREW (M1.7) (Silver)
#23	3-080-204-11	SCREW, TAPPING, P2 (Black)
#59	3-080-205-21	SCREW, TAPPING, P2 (Silver)
#84	3-072-453-11	O PLATE +P2 MAIN M2EG GRIP (Silver)
#110	2-630-005-21	SCREW (M2), NEW TRUSTER, P2 (Black)

5. REPAIR PARTS LIST

HARDWARE LIST

5-1-6. TEBURE UNIT SECTION

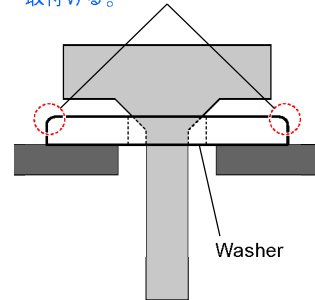


Note 3: Note the direction when you install washers.

Note 3: ワッシャの向きに注意して取付けてください。

Setting washers like that round chamfering is rear side.

R面取り部が上になるように
取付ける。



Note 1: Be sure to read “Precautions for Replacement of Imager” on page 4-2 when changing the imager.

Note 1: イメージの交換時は4-2ページの“イメージ交換時の注意”を必ずお読みください。

Note 2: Refer to “2-11. CLEANING PROCEDURE OF OLPF” on page 2-23 for method of cleaning the OLPF.

Note 2: OLPFの清掃方法は2-23ページの“2-11. CLEANING PROCEDURE OF OLPF”を参照してください。

<u>Ref. No.</u>	<u>Part No.</u>	<u>Description</u>
251	X-2179-727-1	UNIT, MAIN PLATE
252	2-693-427-01	ADJUSTMENT (SP), CCD AO
253	2-689-331-01	WASHER, AO ADJUSTMENT SHAFT
254	A-1376-336-A	SLIDER UNIT (FOR SERVICE) (including ACT901, ACT902, ACT-001 flexible board and HOL-004 flexible board)
255	3-292-847-01	WASHER (Note 3)
256	3-283-501-01	PLATE, LOWPASS, RETAINER
257	2-689-329-01	SHEET, LOW PASS FILTER MASK
258	A-1382-345-A	UNIT, IS FLEXIBLE (including IS-027 flexible board)

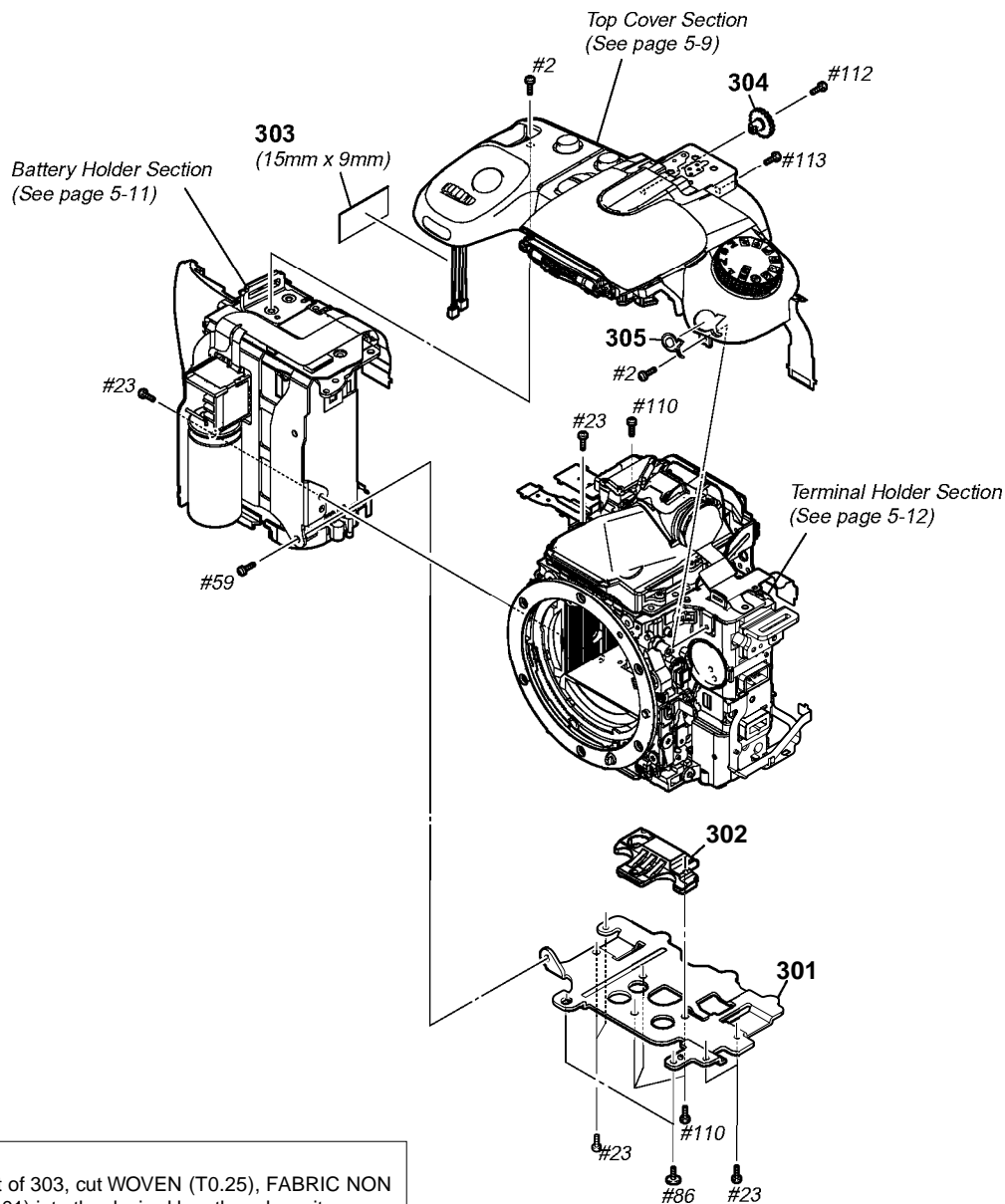
<u>Ref. No.</u>	<u>Part No.</u>	<u>Description</u>
259	A-1382-347-A	CCD ASSY 627 (including IC4303 (CCD imager) and IS-026 complete board) (Note 1, 2)
260	3-279-624-01	HOLDER, FPC
261	3-279-625-01	SPACER
* 262	3-283-511-01	TAPE, IS FPC FIX (SERVICE)
* 263	3-700-910-01	TAPE (C), IS FPC (SERVICE)
#87	2-689-328 01	SCREW, CCD AO ADJUSTMENT (Black)
#111	2-887-124-01	TAPPING SCREW 1.7 (Black)

5. REPAIR PARTS LIST

DISASSEMBLY

HARDWARE LIST

5-1-7. BOTTOM FRAME SECTION

**CAUTION:**

For the part of 303, cut WOVEN (T0.25), FABRIC NON (3-076-631-01) into the desired length and use it.

CAUTION:

303番は、T0.25ヒメロン(3-076-631-01)を切って使用。

Ref. No.	Part No.	Description
* 301	3-282-818-01	BD BOTTOM FRAME
302	3-282-819-01	BD TRIPOD
303	CAUTION	TAPE (W)
304	3-282-741-01	VM DIOPTER ADJUST KNOB
305	3-282-742-01	LOGO EMBLEM
#2	2-635-562-31	SCREW (M1.7) (Black)

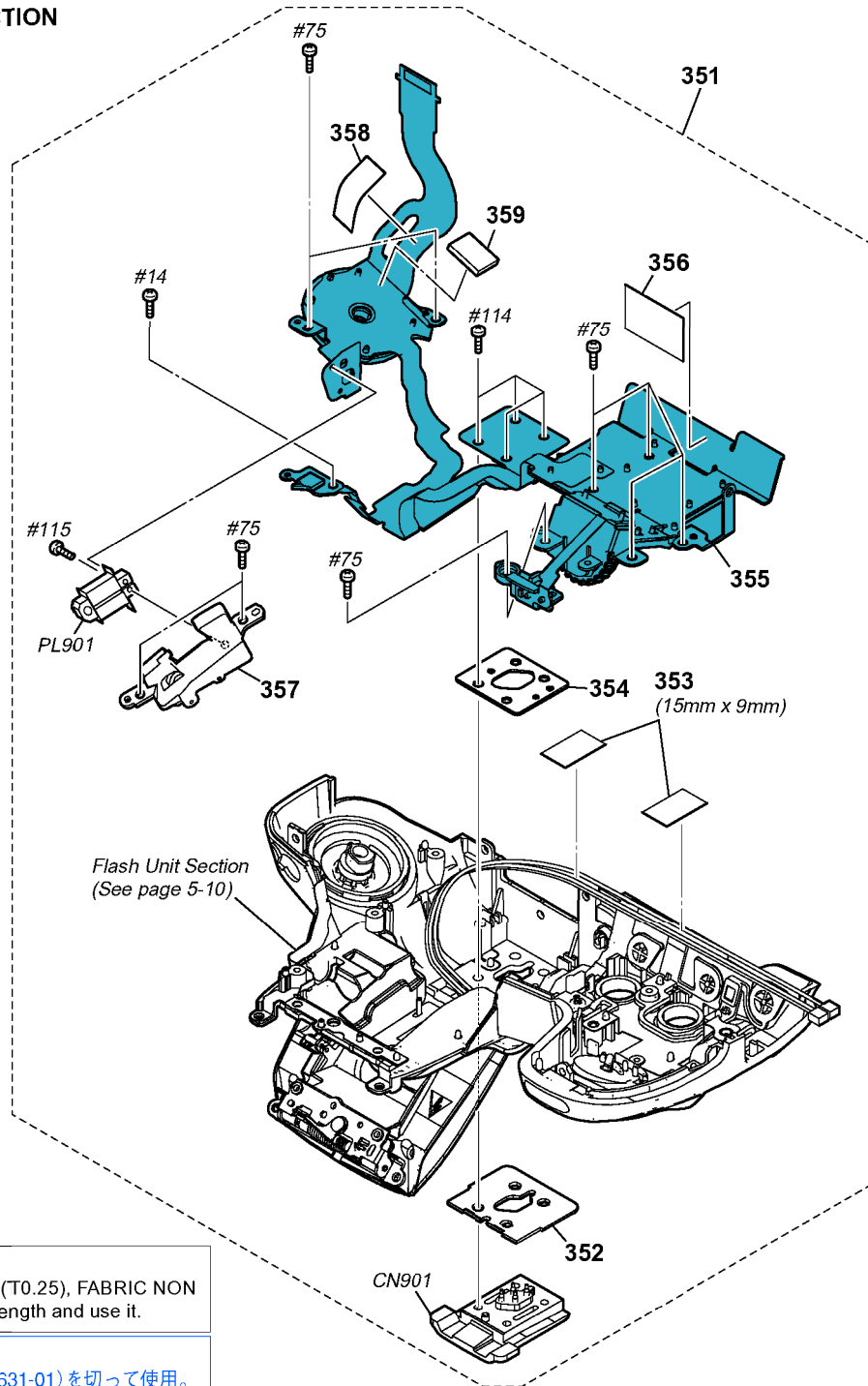
Ref. No.	Part No.	Description
#23	3-080-204-11	SCREW, TAPPING, P2 (Black)
#59	3-080-205-21	SCREW, TAPPING, P2 (Silver)
#86	2-695-434-21	SCREW (T1.7), HEAD PAN TAPPING (Silver)
#110	2-630-005-21	SCREW (M2), NEW TRUSTER, P2 (Black)
#112	2-178-410-11	TITE (UB TITE) 1.4 (Black)
#113	2-635-562-41	SCREW (M1.7) (Black)

5. REPAIR PARTS LIST

DISASSEMBLY

HARDWARE LIST

5-1-8. TOP COVER SECTION

**CAUTION:**

For the part of 353, cut WOVEN (T0.25), FABRIC NON (3-076-631-01) into the desired length and use it.

CAUTION:

353番は、T0.25ヒメロン(3-076-631-01)を切って使用。

Ref. No.	Part No.	Description
351	A-1519-843-A	TOP COVER BLOCK ASSY
* 352	3-282-828-01	ST SHOE BOARD
353	CAUTION	TAPE (W)
* 354	3-282-827-01	ST SHOE PLATE
355	1-480-471-11	SWITCH BLOCK, CONTROL (TK62700)
* 356	3-291-221-01	CV REAR FLEX INSULATING SHEET
357	X-2190-835-2	ST STROBOSCOPE LOCK ASSY
358	3-292-264-01	EM TK FLEXIBLE SPACER

Ref. No.	Part No.	Description
* 359	3-282-751-01	BD SIDE COVER (L) SHEET
CN901	X-2179-803-1	SHOE ASSY, ACCESSORY
PL901	1-455-061-11	SOLENOID, PLUNGER
#14	2-599-475-11	SCREW (M1.7) (Silver)
#75	2-666-551-01	SCREW, TAPPING, P2 (Silver)
#114	2-698-464-01	TAPPING SCREW PHI 2 (Silver)
#115	3-348-998-51	SCREW (M1.4X3.5), TAPPING, PAN (Silver)

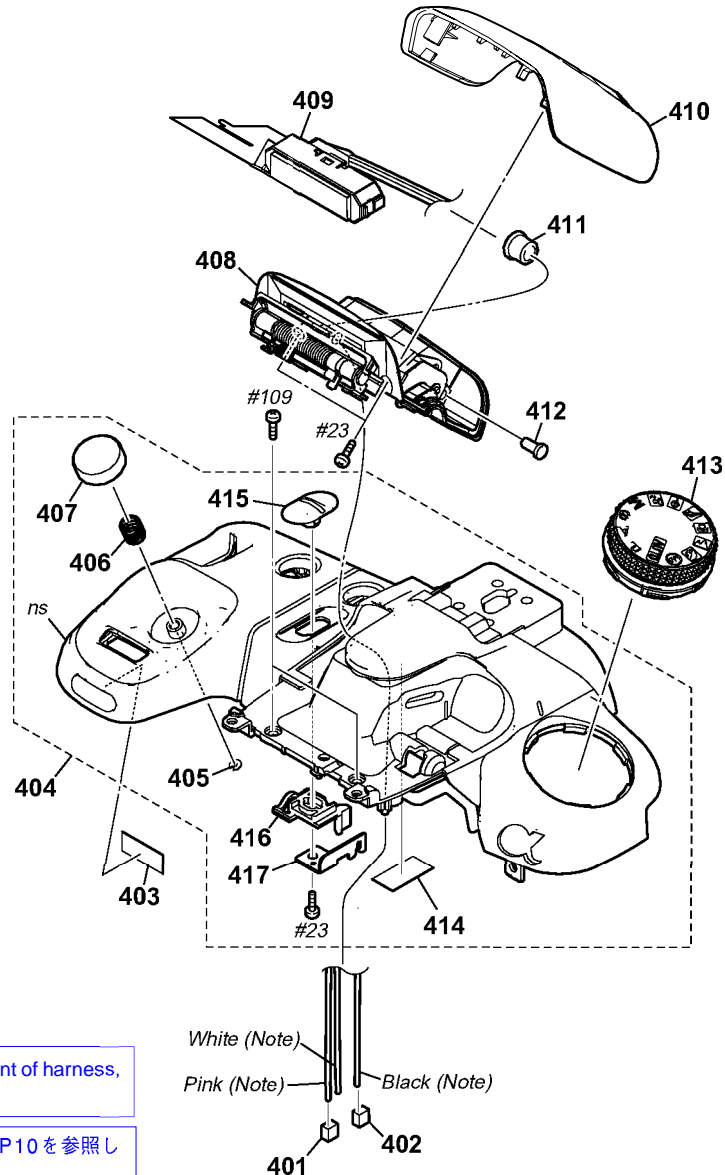
5. REPAIR PARTS LIST

DISASSEMBLY

HARDWARE LIST

5-1-9. FLASH UNIT SECTION

ns: not supplied



Note: About the arrangement of harness,
refer to HELP 10.

Note: 配線についてはHELP10を参照し
てください。

¥Refer to page 5-1 for mark △.

Ref. No.	Part No.	Description
401	1-820-649-11	HOUSING, CONNECTOR 2P (Red)
402	1-820-649-21	HOUSING, CONNECTOR 2P (Yellow)
* 403	3-287-595-01	CV SELF LED ELECTROSTATIC S
404	X-2189-654-1	CV TOP COVER 628 ASSY
405	2-629-790-01	WASHER, NYLON
* 406	3-282-839-01	CT RELEASE SPRING
407	3-282-838-01	CT RELEASE BUTTON
408	X-2187-844-2	ST STROBOSCOPE BASE ASSY
△ 409	1-480-409-11	FLASH UNIT (FL62700)
410	3-282-850-01	ST STROBOSCOPE COVER

Ref. No.	Part No.	Description
* 411	3-282-851-01	ST SLIDE SHAFT A
* 412	3-282-852-01	ST SLIDE SHAFT (B)
413	X-2187-843-1	CT MODE DIAL ASSY
414	3-287-447-11	CV FPC TAPE B
415	3-288-223-01	VM V KNOB
416	3-288-224-02	VM V KNOB RETAINER
417	3-288-225-01	VM V LEVER
#23	3-080-204-11	SCREW, TAPPING, P2 (Black)
#109	2-515-483-21	SCREW (M1.7), LOCK ACE, P2 (Black)

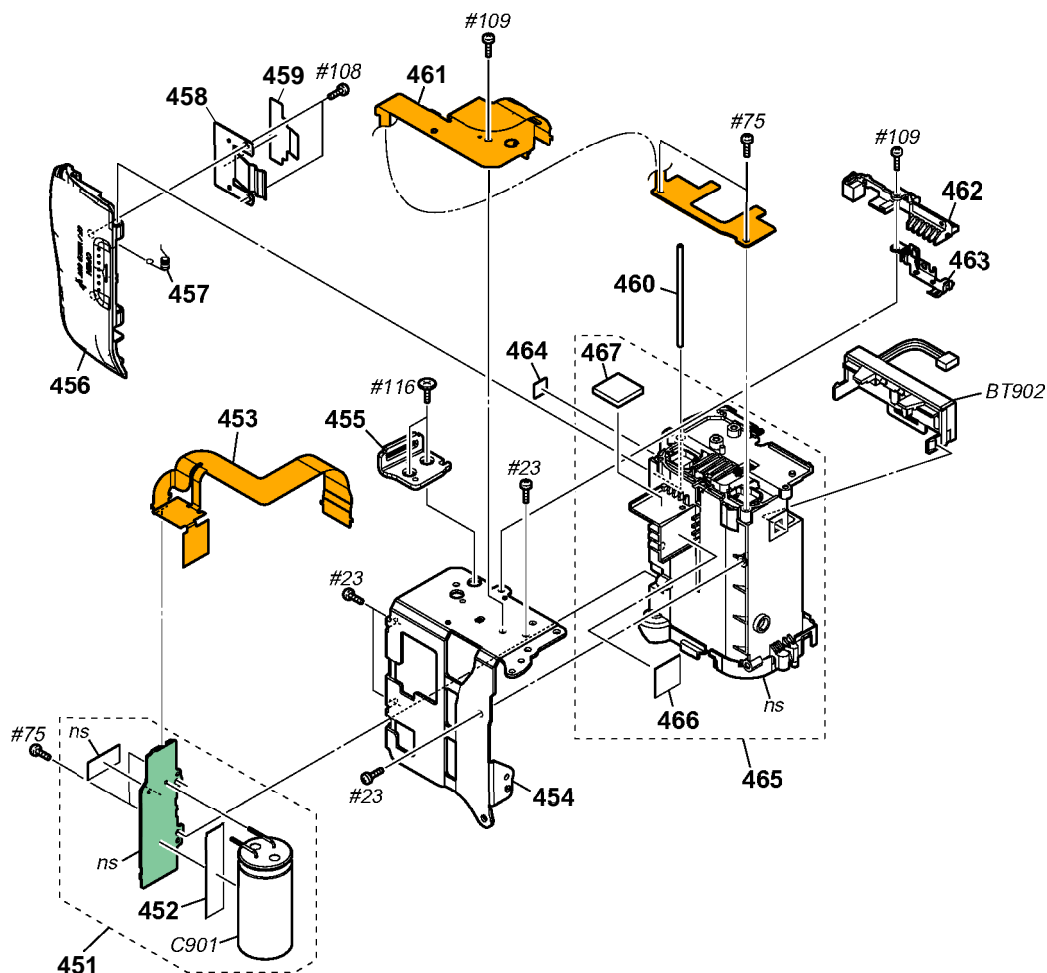
5. REPAIR PARTS LIST

DISASSEMBLY

HARDWARE LIST

5-1-10. BATTERY HOLDER SECTION

ns: not supplied



¥Refer to page 5-1 for mark △.

Ref. No.	Part No.	Description	Ref. No.	Part No.	Description
451	A-1437-493-A	ST-196 BOARD, COMPLETE	* 463	3-282-911-01	EM MM PC BOARD PLATE
452	3-277-350-01	TAPE (62300), CAPACITOR FIXED	464	3-282-912-01	BD BATTERY HOLDER SHEET
453	A-1437-492-A	GY-008 FLEXIBLE BOARD, COMPLETE	465	X-2187-852-1	BD BATTERY HOLDER ASSY
* 454	3-282-908-01	BD GRIP FRAME			
455	3-282-909-01	BD EYELET (R)	* 466	3-282-884-01	BD GY FLEXIBLE FIXED TAPE
			* 467	3-282-885-01	BD GY SHOCK ABSORPTION SHEET
456	3-282-810-11	CV MEDIA LID	△ BT902	1-780-588-11	TERMINAL BOARD, BATTERY
* 457	3-282-814-01	CV MEDIA LID SPRING	△ * C901	1-114-603-11	ELECT 250uF 330V
* 458	3-282-812-01	CV LEAF SPRING, MEDIA LID	#23	3-080-204-11	SCREW, TAPPING, P2 (Black)
* 459	3-282-815-01	CV MEDIA LID LABEL			
* 460	3-282-811-01	CV MEDIA LID SHAFT	#75	2-666-551-01	SCREW, TAPPING, P2 (Silver)
			#108	2-695-430-01	SCREW (T1.7), HEAD PAN TAPPING (Black)
461	A-1442-603-A	MA-450 FLEXIBLE BOARD, COMPLETE	#109	2-515-483-21	SCREW (M1.7), LOCK ACE, P2 (Black)
* 462	3-282-910-01	BD MM BOARD HOLDER	#116	2-695-435-01	SCREW (T2), HEAD PAN TAPPING (Silver)

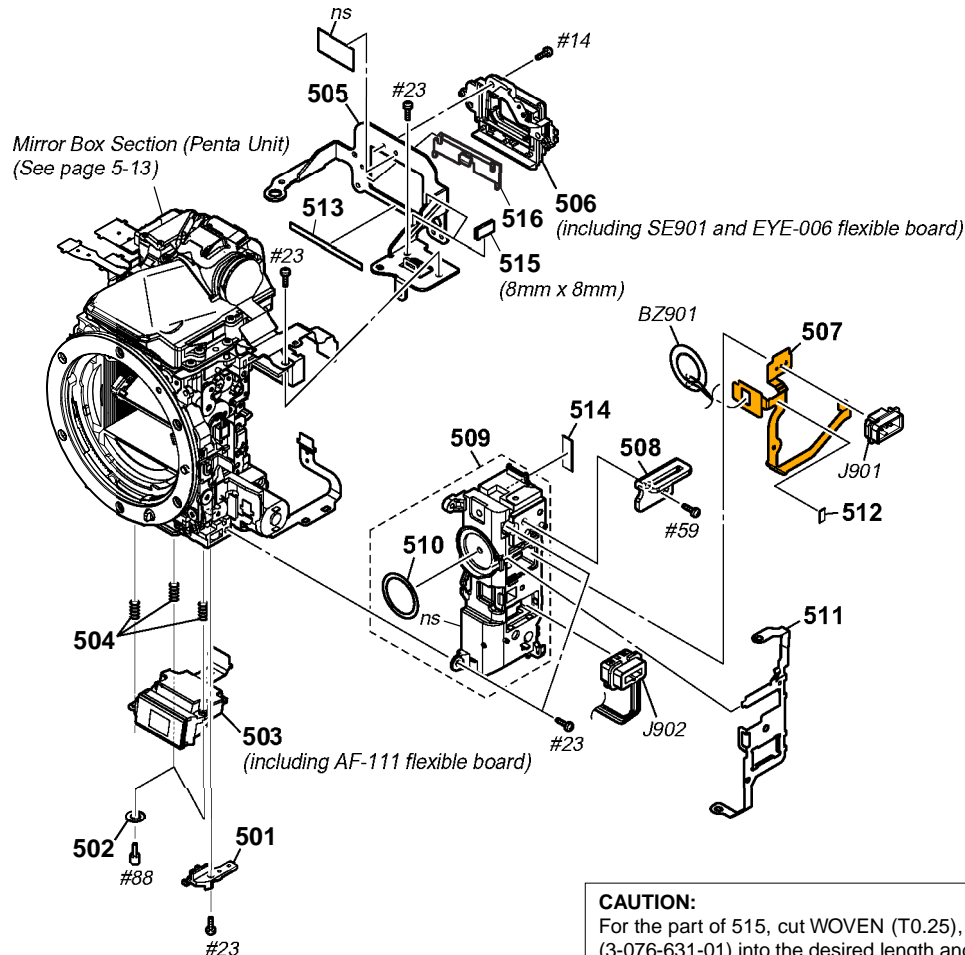
5. REPAIR PARTS LIST

DISASSEMBLY

HARDWARE LIST

5-1-11. TERMINAL HOLDER SECTION

ns: not supplied

**CAUTION:**

For the part of 515, cut WOVEN (T0.25), FABRIC NON (3-076-631-01) into the desired length and use it.

CAUTION:

515番は、T0.25ヒメロン(3-076-631-01)を切って使用。

¥Refer to page 5-1 for mark △.

Ref. No.	Part No.	Description	Ref. No.	Part No.	Description
* 501	3-282-822-01	HOLDER, DCJ CABLE	* 512	3-282-751-01	BD SIDE COVER (L) SHEET
502	2-688-865-01	WASHER, S ADJUSTMENT	* 513	3-398-188-01	BD LIGHT INTERCEPTION SPACER F
503	A-1317-238-A	ALX-6270 (AF MODULE) (including AF-111 flexible board)	* 514	3-298-583-01	BD TEBURE SPACER SHEET
504	2-693-420-01	SP, S ADJUSTMENT	515	CAUTION	BD VTN INSULATING TAPE
* 505	3-282-817-01	BD EYE PIECE FRAME	* 516	3-296-540-01	BD EYE PIECE GLASS RETAINER
506	A-1437-505-A	EYE PIECE FRAME UNIT (including SE901 and EYE-006 flexible board)	BZ901	1-826-816-11	BUZZER, PIEZOELECTRIC
507	A-1442-602-A	RM-096 FLEXIBLE BOARD, COMPLETE	J901	1-480-041-11	REMOTE HOLDER (REMOTE)
508	3-282-883-01	BD EYELET (L)	△ J902	1-821-194-21	JACK, DC (DC IN)
* 509	X-2187-851-1	BD TERMINAL HOLDER ASSY	#14	2-599-475-11	SCREW (M1.7) (Silver)
510	3-282-873-01	BD BUZZER TAPE	#23	3-080-204-11	SCREW, TAPPING, P2 (Black)
* 511	3-282-882-01	BD TERMINAL RETAINER PLATE	#59	3-080-205-21	SCREW, TAPPING, P2 (Silver)
			#88	2-689-015-01	SCREW, S ADJUSTMENT (Silver)

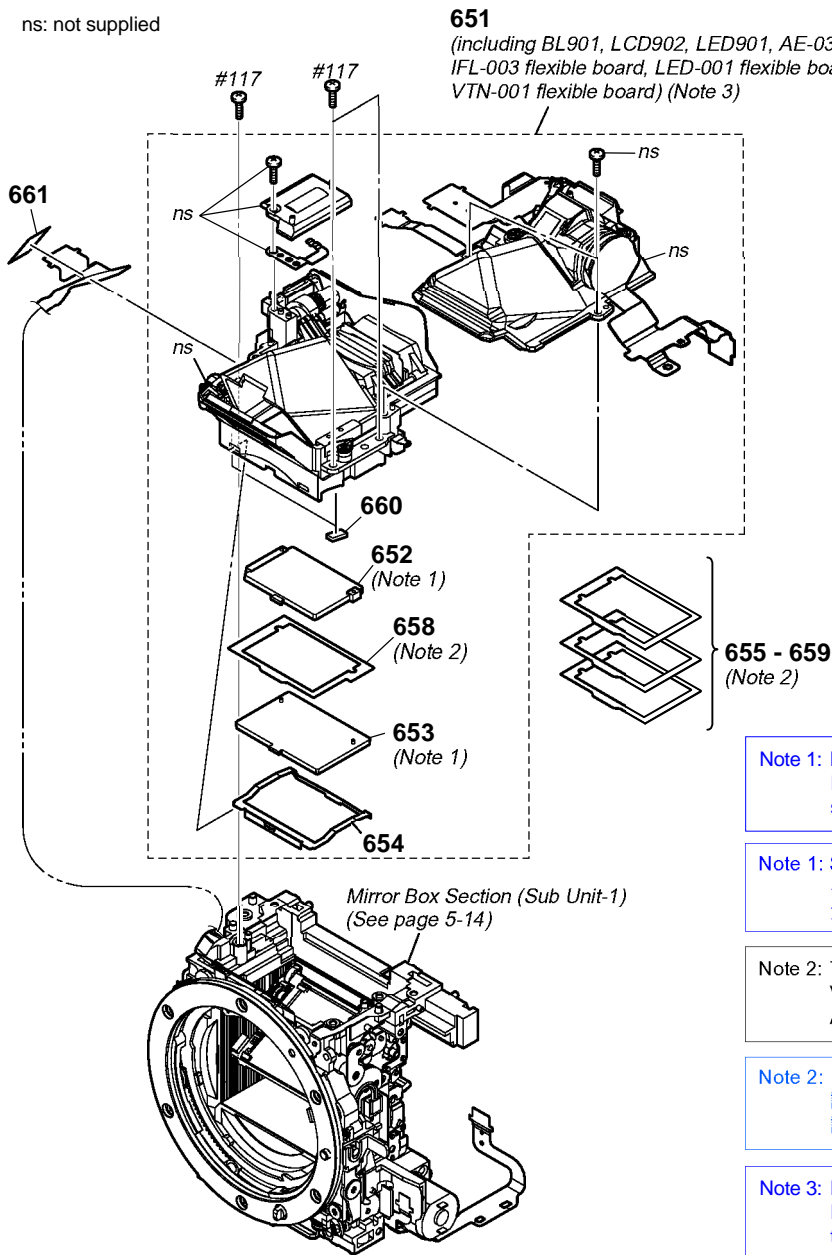
5. REPAIR PARTS LIST

DISASSEMBLY

HARDWARE LIST

5-1-12. MIRROR BOX SECTION (PENTA UNIT)

ns: not supplied



Note 1: Refer to page 1-2 Q-5. METHOD OF EXCHANGING SI SCREEN AND FOCUS PLATE when SI screen or focus plate are exchanged.

Note 1: SIスクリーンまたは焦点板を交換する際は、1-5ページの「1-5. SIスクリーン、焦点板の交換方法」を参照してください。

Note 2: These are spacers use to adjust thickness when Viewfinder Back Adjustment is done.
Adjusting Item: "Viewfinder Back Adj."

Note 2: ビューファインダーバック調整を行う際、厚さ調整のために使用するスペーサです。
調整項目: 「Viewfinder Back Adj.」

Note 3: Refer to page 2-24 Q-12. CLEANING PROCEDURE OF VIEWFINDER for method of cleaning the viewfinder.

Note 3: ビューファインダーの清掃方法は、2-24ページの「2-12. CLEANING PROCEDURE OF VIEWFINDER」を参照してください。

Ref. No.	Part No.	Description
651	A-1528-267-A	VTN PENTA BLOCK ASSY (including BL901, LCD902, LED901, AE-032 flexible board, IFL-003 flexible board, LED-001 flexible board and VTN-001 flexible board) (Note 3)
652	A-1498-933-A	SI SCREEN (SERVICE) (Note 1)
653	A-1510-533-A	FORCUS PLATE (SERVICE) (Note 1)
654	3-279-665-01	VM FS RETAINER
655	2-689-369-01	SPACER (A), VB (T=0.05mm) (Note 2)

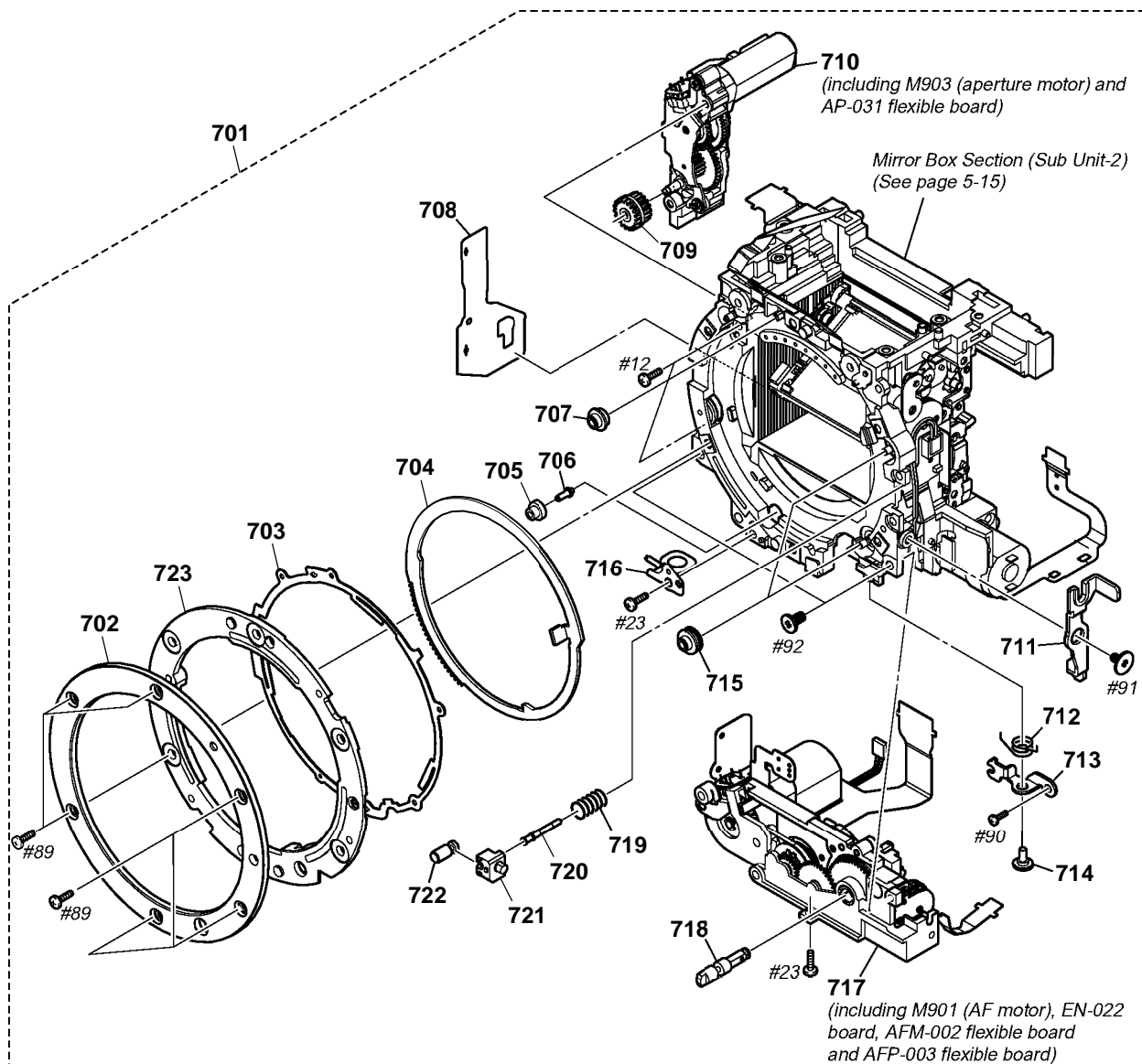
Ref. No.	Part No.	Description
656	2-689-370-01	SPACER (B), VB (T=0.1mm) (Note 2)
657	2-689-371-01	SPACER (C), VB (T=0.15mm) (Note 2)
658	2-689-372-01	SPACER (D), VB (T=0.2mm) (Note 2)
* 659	3-700-972-01	SPACER (E), VB (T=0.25mm) (Note 2)
660	3-279-666-01	CUSHION, MAIN MIRROR
661	3-870-313-01	SHEET, AFM FLEXIBLE GUARD
#117	2-695-429-31	SCREW (T1.7), HEAD PAN TAPPING (Silver)

5. REPAIR PARTS LIST

DISASSEMBLY

HARDWARE LIST

5-1-13. MIRROR BOX SECTION (SUB UNIT-1)



Ref. No.	Part No.	Description
701	A-1382-393-A	SUB BLOCK ASSY, MIRROR BOX
702	2-689-021-01	MOUNT, H
703	2-689-198-01	RING (SP)
704	2-689-312-02	RING, IRIS
705	3-277-916-01	ROLLER (C), RING
706	3-268-951-01	SHAFT, RING ROLLER (C)
707	2-689-314-01	ROLLER (B), RING
* 708	3-268-957-01	SHEET, IRIS FPC PROTECTION
709	2-689-306-01	GEAR, IRIS JOINT
710	A-1317-689-A	APERTURE UNIT (including M903 (aperture motor) and AP-031 flexible board)
711	3-268-940-01	LEVER, COUPLER
712	3-268-941-01	SP, COUPLER LEVER TENSION
713	3-268-942-01	LEVER, COUPLER JOINT
714	2-689-289-01	SHAFT, COUPLER LEVER
715	2-689-313-01	ROLLER (A), RING

Ref. No.	Part No.	Description
* 716	3-279-645-01	PLATE (LOWER), H MOUNT LUG
717	A-1382-446-A	AF DRIVING UNIT (including M901 (AF motor), EN-022 board, AFM-002 flexible board and AFP-003 flexible board)
718	X-2179-722-1	AF COUPLER ASSY
719	3-268-945-01	SP, LENS LOCK
720	3-268-943-01	PIN, LENS LOCK
721	3-268-944-01	HOLDER, LENS LOCK PIN
722	3-268-956-01	PIN, LENS LOCK GUIDE
723	2-688-792-01	SPACER, MOUNT
#12	3-080-204-21	SCREW, TAPPING, P2 (Black)
#23	3-080-204-11	SCREW, TAPPING, P2 (Black)
#89	2-695-575-01	SCREW (T2), +P1 PAN TAPPING (Silver)
#90	3-271-395-01	SCREW (M1.7), LEVER ADJUSTMENT (Silver)
#91	2-695-434-11	SCREW (T1.7), HEAD PAN TAPPING (Silver)
#92	3-268-954-01	SCREW, AF BASE PLATE STOPPER (Black)

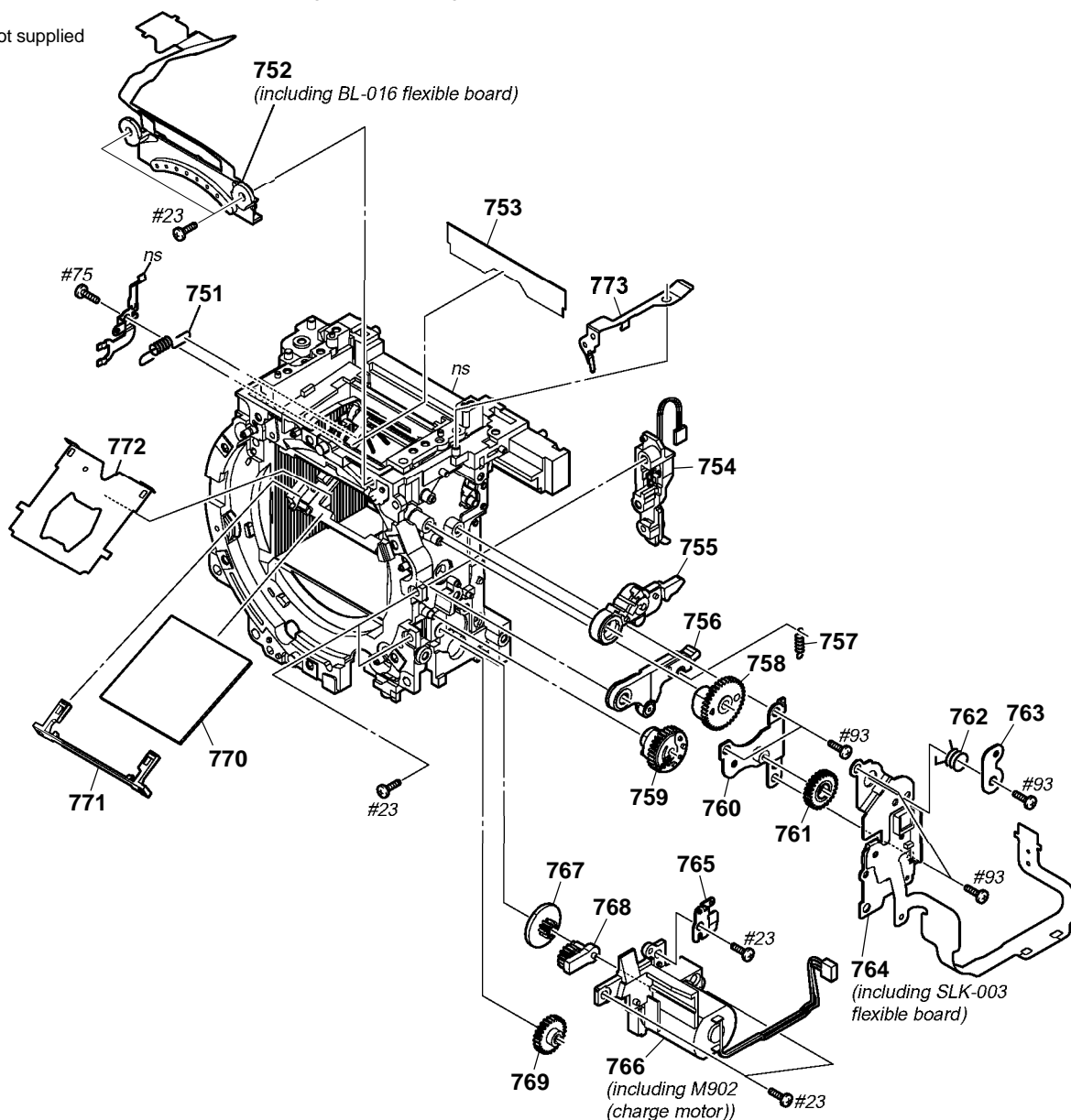
5. REPAIR PARTS LIST

DISASSEMBLY

HARDWARE LIST

5-1-14. MIRROR BOX SECTION (SUB UNIT-2)

ns: not supplied



Ref. No.	Part No.	Description
751	3-268-935-01	SP, SUB MIRROR FUNCTION
752	A-1382-459-A	BL CONTACT HOLDER UNIT (including BL-016 flexible board)
753	3-279-649-01	SHEET, BL DUST PROTECT
754	A-1317-687-A	SLK BASE PLATE UNIT
755	X-2179-717-1	MIRROR CHARGE LEVER ASSY
756	3-279-648-01	LEVER, SHUTTER CHARGE
757	3-268-931-01	SP, SHUTTER CHARGE LEVER
758	3-268-928-02	GEAR, MIRROR CHARGE CAM
759	X-2179-720-2	SHUTTER CAM GEAR ASSY
760	X-2179-719-1	CHARGE BASE PLATE C ASSY
761	3-268-927-02	GEAR, IDLE
762	3-268-929-01	DRIVING (SP), MIRROR
763	3-268-930-01	RETAINER, MIRROR DRIVING (SP)
764	X-2187-459-1	CHARGE BASE PLATE B ASSY (including SLK-003 flexible board)

Ref. No.	Part No.	Description
765	3-268-937-01	RETAINER, ADJUSTMENT PLATE
766	A-1382-460-A	CHARGE BASE PLATE A UNIT (including M902 (charge motor))
767	3-279-642-01	GEAR, DECELERATION
768	X-2187-400-1	PLANET GEAR ASSY (6230)
769	3-268-926-11	GEAR, SUN
770	3-269-005-01	MAIN MIRROR
771	3-279-657-03	RETAINER, MAIN MIRROR
772	3-279-655-01	PLATE, AF MASK
* 773	3-279-644-01	PLATE (UPPER), H MOUNT LUG
#23	3-080-204-11	SCREW, TAPPING, P2 (Black)
#75	2-666-551-01	SCREW, TAPPING, P2 (Silver)
#93	3-254-082-01	SCREW (Silver)

Electrical parts list of the AM-013 board is not shown.
Pages 5-16 to 5-22 are not shown.

Ver. 1.2 2008.06

The changed portions from
Ver. 1.1 are shown in blue.

5-2. ELECTRICAL PARTS LIST

Ref. No.	Part No.	Description
A-1437-492-A	GY-008 FLEXIBLE BOARD, COMPLETE	*****
< CAPACITOR >		
C6201	1-165-875-11	CERAMIC CHIP 10uF 10% 10V
C6202	1-165-875-11	CERAMIC CHIP 10uF 10% 10V
C6203	1-165-875-11	CERAMIC CHIP 10uF 10% 10V
C6204	1-165-875-11	CERAMIC CHIP 10uF 10% 10V
< SENSOR >		
SE6201	1-480-049-31	SENSOR, ANGULAR VELOCITY (PITCH)
SE6202	1-480-049-31	SENSOR, ANGULAR VELOCITY (YAW)
A-1382-347-A CCD ASSY 627 (Note)		
(Not supplied) IS-026 BOARD, COMPLETE		

(IS-026 complete board and all mounted parts (including IC4303 (CCD imager)) are not supplied, but they are included in CCD assy 627.)		
A-1466-493-A LF-057 FLEXIBLE BOARD, COMPLETE		

< CAPACITOR >		
C9453	1-100-742-91	CERAMIC CHIP 2.2uF 20% 10V
C9455	1-112-300-91	CERAMIC CHIP 4.7uF 10% 10V
C9456	1-112-815-91	CERAMIC CHIP 10uF 20% 6.3V
C9457	1-100-507-91	CERAMIC CHIP 4.7uF 20% 6.3V
C9458	1-100-352-91	CERAMIC CHIP 1uF 20% 16V
C9459	1-112-300-91	CERAMIC CHIP 4.7uF 10% 10V
C9460	1-112-300-91	CERAMIC CHIP 4.7uF 10% 10V
* C9461	1-100-910-91	CERAMIC CHIP 10uF 20% 10V
C9462	1-114-750-91	CERAMIC CHIP 2.2uF 20% 16V
C9465	1-100-660-91	CERAMIC CHIP 1uF 10% 10V
C9466	1-100-742-91	CERAMIC CHIP 2.2uF 20% 10V
C9467	1-114-098-91	CERAMIC CHIP 2.2uF 20% 25V
< CONNECTOR >		
* CN9451	1-821-202-71	CONNECTOR, FPC (ZIF) 45P
< RESISTOR >		
R9456	1-216-864-11	SHORT CHIP 0
R9457	1-216-857-11	METAL CHIP 1M 5% 1/10W
R9458	1-216-864-11	SHORT CHIP 0
A-1442-603-A MA-450 FLEXIBLE BOARD, COMPLETE		

< CONNECTOR >		
* CN5902	1-816-643-51	FFC/FPC CONNECTOR (LIF) 10P
* CN5903	1-816-647-51	FFC/FPC CONNECTOR (LIF) 18P
* CN5904	1-816-645-51	FFC/FPC CONNECTOR (LIF) 14P

• Refer to page 5-1 for mark △.

GY-008**IS-026****LF-057****MA-450****MM-076****RM-096****ST-196**

Ref. No.	Part No.	Description
A-1437-495-A	MM-076 BOARD, COMPLETE	*****
< CAPACITOR >		
C5202	1-125-777-11	CERAMIC CHIP 0.1uF 10% 10V
C5203	1-125-777-11	CERAMIC CHIP 0.1uF 10% 10V
C5205	1-165-908-11	CERAMIC CHIP 1uF 10% 10V
< CONNECTOR >		
* CN5201	1-820-857-71	CONNECTOR, FPC (ZIF) 51P
CN5202	1-818-139-11	PIN, CONNECTOR (CF CARD)
		(COMPACTFLASH/MICRODRIVE)
* CN5203	1-821-457-11	CONNECTOR, CARD (COMPACTFLASH)
		(CF CARD EJECT LEVER)
< RESISTOR >		
R5244	1-218-977-11	RES-CHIP 100K 5% 1/16W
R5246	1-218-977-11	RES-CHIP 100K 5% 1/16W
< COMPOSITION CIRCUIT BLOCK >		
RB5201	1-234-372-11	RES, NETWORK 100 (1005X4)
RB5202	1-234-372-11	RES, NETWORK 100 (1005X4)
RB5203	1-234-372-11	RES, NETWORK 100 (1005X4)
RB5204	1-234-372-11	RES, NETWORK 100 (1005X4)
RB5205	1-234-372-11	RES, NETWORK 100 (1005X4)
RB5206	1-234-372-11	RES, NETWORK 100 (1005X4)
RB5207	1-234-372-11	RES, NETWORK 100 (1005X4)
RB5208	1-234-372-11	RES, NETWORK 100 (1005X4)
A-1442-602-A RM-096 FLEXIBLE BOARD, COMPLETE		

< CAPACITOR >		
C8601	1-164-937-11	CERAMIC CHIP 0.001uF 10% 50V
C8602	1-164-937-11	CERAMIC CHIP 0.001uF 10% 50V
< LINE FILTER >		
LF8601	1-457-088-21	COIL,COMMON MORD CHOKE
A-1437-493-A ST-196 BOARD, COMPLETE		

3-277-350-01	TAPE (62300), CAPACITOR FIXED	
< CAPACITOR >		
△ * C901	1-114-603-11	ELECT 250uF 330V
C6501	1-119-667-11	CERAMIC CHIP 22uF 10V
C6502	1-100-611-91	CERAMIC CHIP 22uF 20% 6.3V
C6504	1-162-919-11	CERAMIC CHIP 22PF 5% 50V
C6506	1-165-908-11	CERAMIC CHIP 1uF 10% 10V
C6507	1-164-360-11	CERAMIC CHIP 0.1uF 16V
< CONNECTOR >		
* CN6501	1-816-644-51	FFC/FPC CONNECTOR (LIF) 12P
* CN6503	1-821-666-11	PIN, CONNECTOR

Note: Be sure to read "Precautions for Replacement of Imager" on page 4-2 when changing the imager.

Note: イメージャの交換時は4-2ページの“イメージャ交換時の注意”を必ずお読みください。

Ref. No. Part No. Description

* CN6504 1-821-666-21 PIN, CONNECTOR

< DIODE >

△* D6501 6-502-219-01 DIODE FV02R80TP

△ D6502 6-501-119-01 DIODE RR264M-400

< IC >

△* IC6501 6-711-948-01 IC BD4216NUV-E2

< TRANSISTOR >

△* Q6501 6-551-937-01 TRANSISTOR TIG032TS-S-TL-E

< RESISTOR >

* R6501	1-246-338-21	METAL CHIP	3M		1/8W
R6502	1-218-881-11	METAL CHIP	27K	0.5%	1/10W
R6506	1-216-807-11	METAL CHIP	68	5%	1/10W
R6507	1-216-857-11	METAL CHIP	1M	5%	1/10W
R6510	1-216-845-11	METAL CHIP	100K	5%	1/10W

R6513	1-216-821-11	METAL CHIP	1K	5%	1/10W
R6514	1-216-821-11	METAL CHIP	1K	5%	1/10W
R6516	1-216-845-11	METAL CHIP	100K	5%	1/10W

< TRANSFORMER >

△* T6501 1-445-335-11 TRANSFORMER, D.C.-D.C.CONVERTER

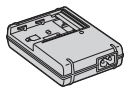
¥Refer to page 5-1 for mark △.

Ver. 1.2 2008.06

The changed portions from
Ver. 1.1 are shown in blue.

Checking supplied accessories.

Note: This item is supplied with the unit as an accessory, but is not prepared as a service part.



Battery Charger
BC-VM10
▲ 1-479-742-41



Power Cord
▲ 1-792-549-41 (J)
▲ 1-824-910-71 (AEP, E)
▲ 1-827-269-12 (UK)
▲ 1-832-121-31 (CH)



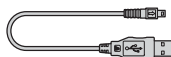
Quick Start Guide
3-287-968-11 (ENGLISH) (AEP, UK, E)
3-287-968-21 (FRENCH, ITALIAN) (AEP)
3-287-968-31 (SPANISH, PORTUGUESE) (AEP, E)
3-287-968-41 (GERMAN, DUTCH) (AEP)
3-287-968-51 (TRADITIONAL CHINESE, SIMPLIFIED CHINESE) (E)
3-287-968-61 (RUSSIAN) (AEP)
3-287-968-71 (ARABIC, PERSIAN) (E)
3-287-968-91 (SIMPLIFIED CHINESE) (CH)
4-105-172-01 (JAPANESE) (J)



Conversion (2P) Adaptor
▲ 1-569-008-12 (E)



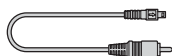
Rechargeable Battery Pack
NP-FM500H
(Note)



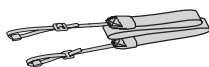
USB Cable
1-834-311-21



Instruction Manual
3-287-969-11 (ENGLISH) (AEP, UK, E)
3-287-969-21 (FRENCH, ITALIAN) (AEP)
3-287-969-31 (SPANISH, PORTUGUESE) (AEP, E)
3-287-969-41 (GERMAN, DUTCH) (AEP)
3-287-969-51 (TRADITIONAL CHINESE, SIMPLIFIED CHINESE) (E)
3-287-969-61 (RUSSIAN) (AEP)
3-287-969-71 (ARABIC, PERSIAN) (E)
3-287-969-93 (SIMPLIFIED CHINESE) (CH)
4-105-173-01 (JAPANESE) (J)



Video Cable
1-834-312-11



Shoulder Strap
3-282-907-03



Eyepiece Cover
3-273-458-01

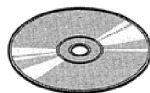
Body Cap Seal
2-894-387-01



Body Cap
2-688-728-02



Eyecup
X-2187-839-1



CD-ROM
(Application Software for α Camera)
3-277-944-01

• Refer to page 5-1 for mark ▲.