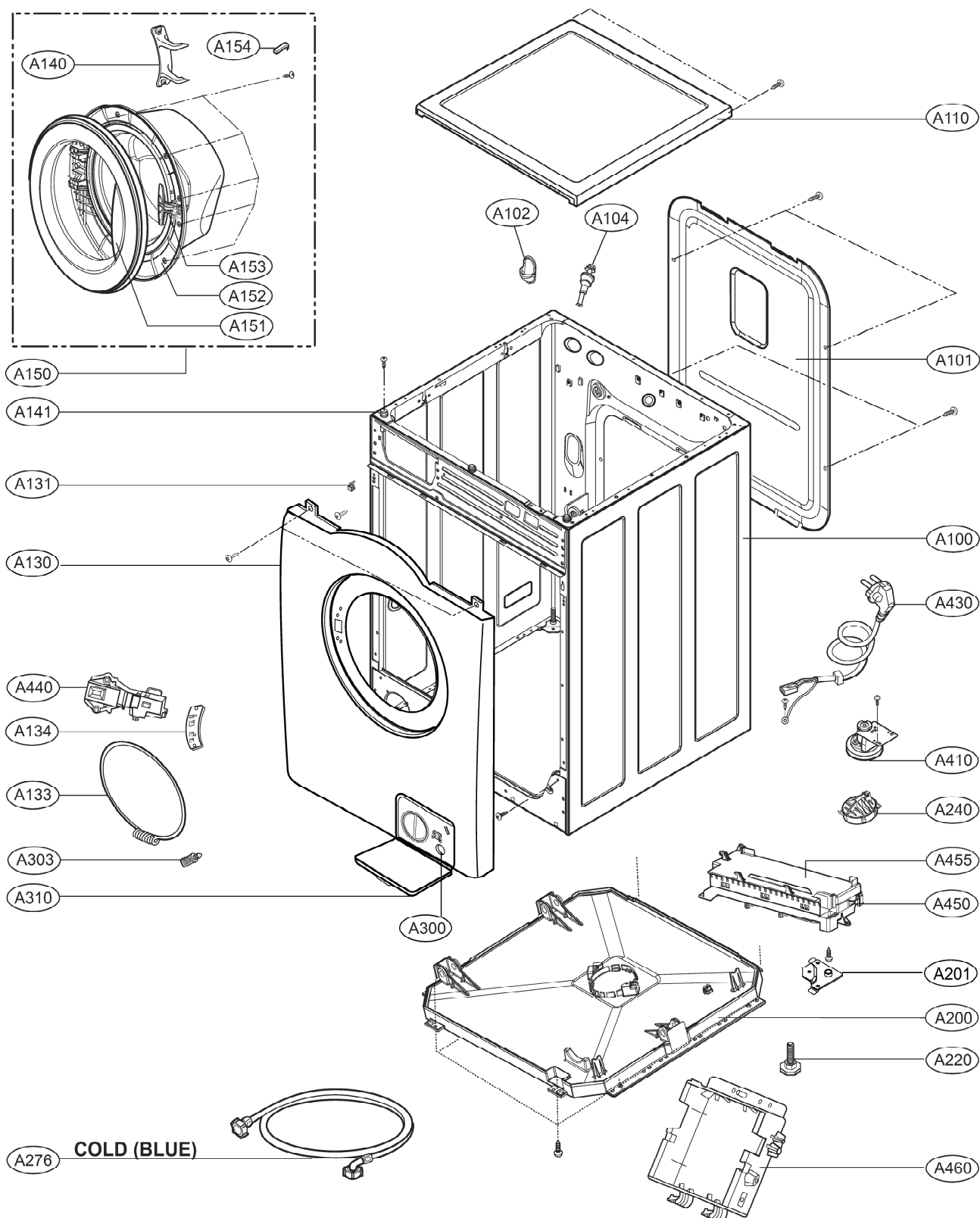
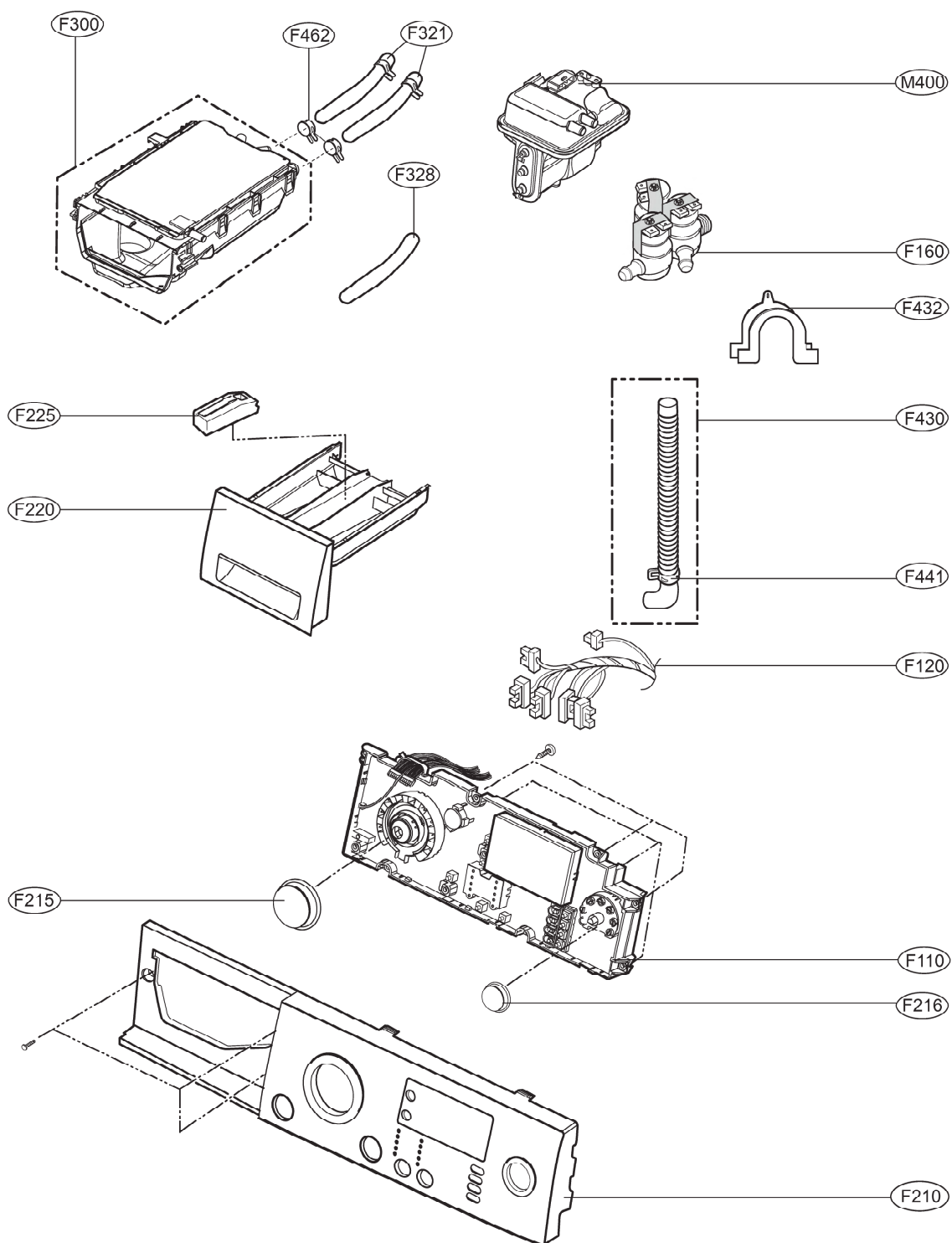


10. EXPLODED VIEW AND PART LIST

10-1. THE PART LIST OF CABINET ASSEMBLY



10-2. THE EXPLODED VIEW OF CONTROL PANEL & DISPENSER ASSEMBLY



This diagram illustrates the exploded view of a vehicle chassis and suspension system. The components are labeled with part numbers in circles:

- Top Section (Engine/Generator Area):** Includes parts F140, K411, K410, K351, K350, K360, K143, and K123.
- Front Suspension (Left Side):** Includes parts F320, F310, F466, F464, K140, K111, K110, K141, K115, K105, and K410.
- Front Suspension (Right Side):** Includes parts K121, K122, K125, K320, and K105.
- Chassis and Drivetrain:** Includes parts K115, K130, K135, K510, K560, K512, K530, K131, K520, F468, K540, F461, K550, K342, K346, K344, and F145.
- Rear Suspension:** Includes parts K610, K611, and K550.