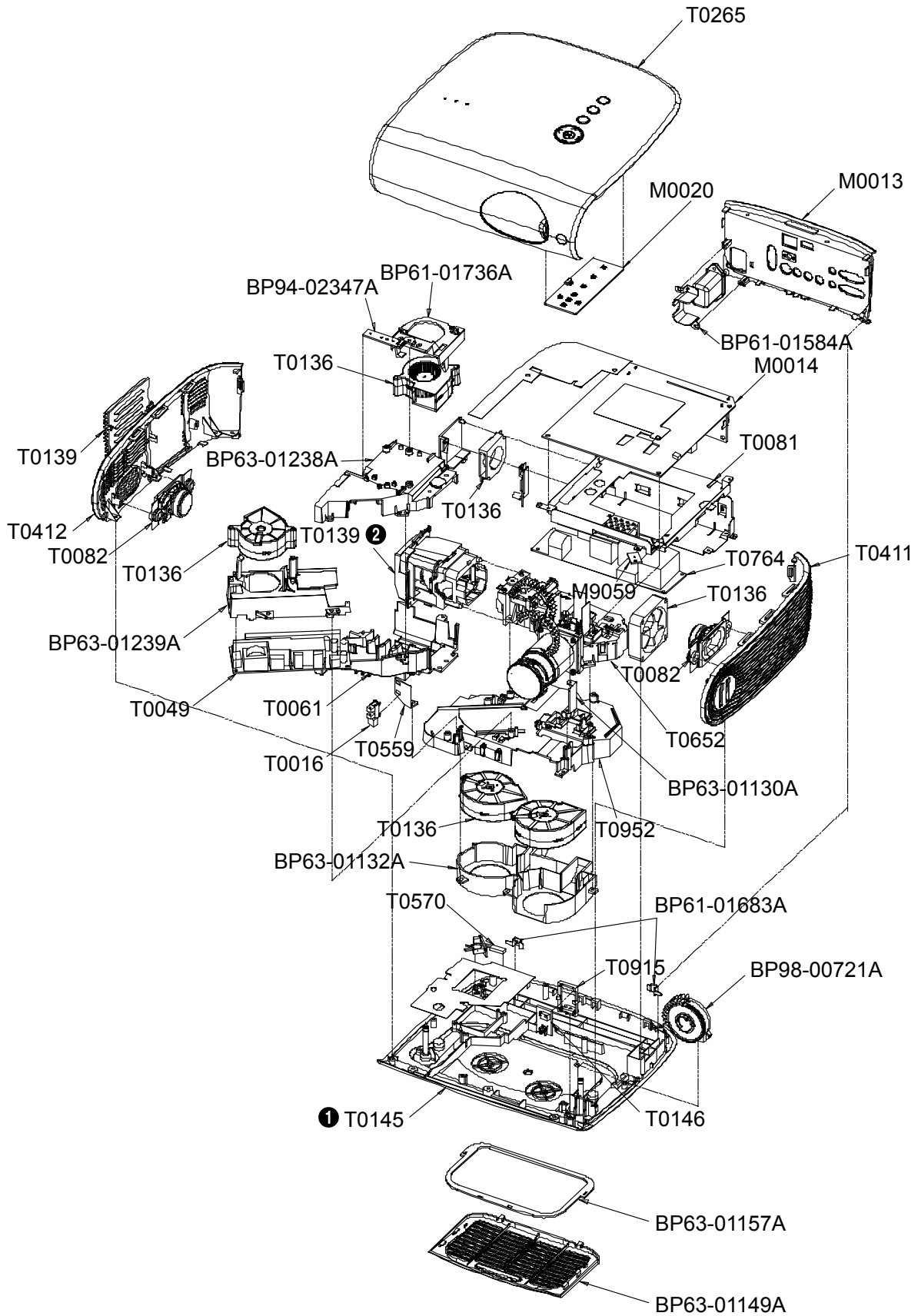
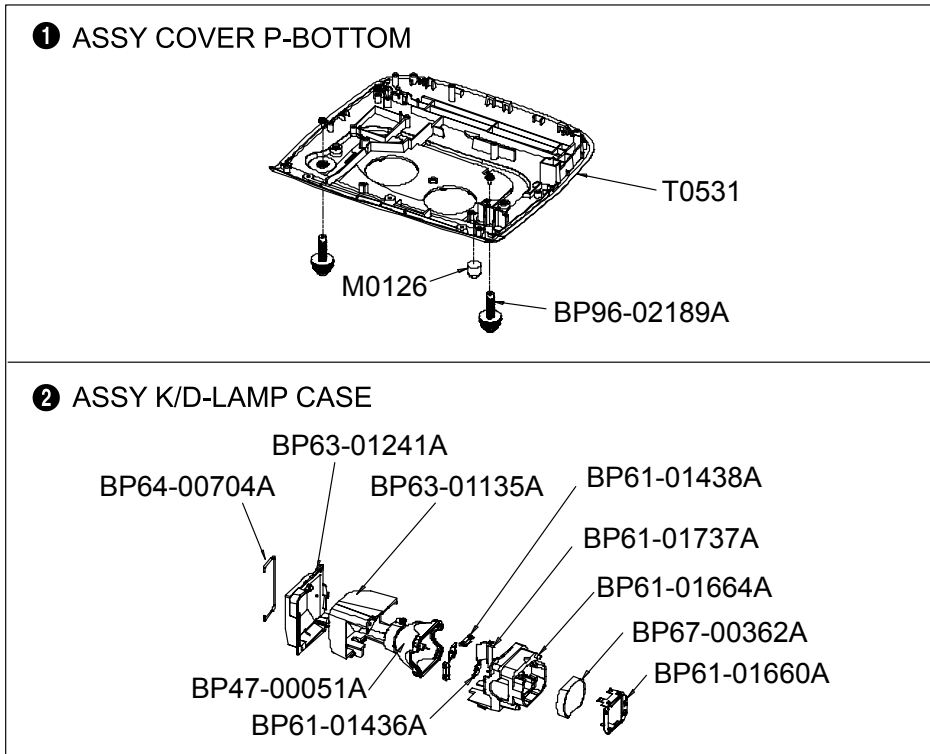


5. Exploded View & Part List

5-1. SPL251WEX/EN - Exploded View





5-1-1. Parts List

Location No.	Code No.	Description & Specification	Q'ty	SA/SNA	Remark
T0145	BP96-02109C	ASSY COVER P-BOTTOM;SPL300,NEW-2,PC,V0,W	1	SNA	①
M0126	BP73-00156A	RUBBER-FOOT;SP-A600,SILICON,BLK	3	SNA	
T0531	BP63-01146B	COVER-BOTTOM;SP-L300,VE,PC V0,WHITE	1	SA	
AH209	BP61-01749A	HOLDER-FOOT;SP-L300,ABS,GLAY	2	SNA	
T0139	BP98-00717C	ASSY K/D-LAMP CASE;SPL250	1	SNA	②
	BP47-00051A	LAMP;230W Ushio lamp,50*50,230W,230~168W	1	SA	
	BP61-01436A	HOLDER-LAMP;A400,SUS301,T0.5,NAT	2	SNA	
	BP61-01438A	SPRING ETC-LAMP;A400,SUS301,T0.2	2	SNA	
	BP61-01660A	BRACKET-LENS;L300,SUS,0.15	1	SNA	
	BP61-01664A	HOLDER-LAMP;L300,PPS,2.5	1	SNA	
	BP61-01737A	BRACKET-LAMP;L250,SPT,0.3	1	SNA	
	BP63-01135A	COVER-LAMP;L300,PPS,2.5	1	SNA	
	BP63-01241A	COVER-LAMP;L250,PPS G/F 30,2.5	1	SNA	
	BP64-00704A	HANDLE-LAMP;L300,SUS WIRE,2.0	1	SNA	
	BP67-00362A	LENS-ILL;concave lens for lamp,BSC7,tran	1	SA	

5. Exploded View & Part List

Location No.	Code No.	Description & Specification	Q'ty	SA/SNA	Remark
M0013	BP96-02219C	ASSY COVER P-RAER;L251,PC,V0,BLK	1	SA	
M0014	BP94-02369A	ASSY PCB MISC-MAIN;SPL251WEX/EN	1	SA	
M0020	BP96-02118B	ASSY BOARD P-KEY CONTROL;SP-L300W,CT500	1	SA	
M9059	BP96-02123A	ASSY SENSOR P-NTC BOARD;SP-L300W,CT5000-	1	SA	
T0016	0604-001393	PHOTO-INTERRUPTER;TR,75mW,BGA,TR	1	SA	
T0049	BP47-00052A	LAMP-BALLAST;230W PHG231A1BZ,50*50,135*6	1	SA	
T0061	BP63-01237A	COVER-DUCT BOT;L250,PPS G/F 30,2.5	1	SNA	
T0081	BP61-01746A	BRACKET-MAIN;L300,SECC,0.5	1	SNA	
T0082	BP96-02098A	ASSY SPEAKER P;16m,Corvette,L300 Project	1	SA	
T0082	BP96-02098B	ASSY SPEAKER P;16m,Corvette,L300 Project	1	SA	
T0136	BP31-00020A	FAN;MCF-S4510AM05-S,SP-P300M,PBT	1	SA	
T0136	BP31-00029H	FAN;2406GL-04W-B29-LB1,CORVETTE,BALL,Rin	1	SA	
T0136	BP31-00037A	FAN;B6025L12B1-BB-OC,CORVETTE,2BALL,150m	1	SA	
T0139	BP63-01150A	COVER-LAMP;SP-L300,PC V0,BLK	1	SNA	
T0146	BP94-02344A	ASSY PCB MISC-SUB BOARD;SP-L300W,corvett	1	SA	
T0265	BP96-02104C	ASSY COVER P-TOP;SPL300,NEW-2,PC,V0,WHIT	1	SA	
T0411	BP63-01147B	COVER-SIDE L;SP-L300,VE,PC V0,BLK,LEFT	1	SA	
T0412	BP63-01148B	COVER-SIDE R;SP-L300,VE,PC V0,BLK,RIGHT	1	SNA	
T0559	BP61-01681A	HOLDER-SENSOR;CORVETTE,ABS	1	SNA	
T0570	4712-001057	THERMOSTAT;125/250V,100+-5C,65+-10C	1	SA	
T0652	BP96-02099A	ASSY LENS P;0.63" LCD 3P XGA,optical Mod	1	SA	
T0764	BP44-01011A	SMPS-PROJECTOR MAIN;L220,BOOST,310W,AC10	1	SA	
T0952	BP61-01480A	HOLDER-MODULE;SPA400,PC+ABS V0,BLK	1	SNA	
T0952	BP61-01735A	HOLDER-MODULE;L250,PC G/F 20,2.5	1	SNA	
	BP61-01584A	BRACKET-GUIDE POWER;SPA800,SECC,T1.0	1	SNA	
	BP61-01683A	BRACKET-REAR BOTTOM;SP-L300,SECC,T1.0	2	SNA	
	BP61-01716A	HOLDER-FAN;L300,PPS,2.5	1	SNA	
	BP61-01736A	HOLDER-FAN;L250,PC G/F 20,2.5	1	SNA	
	BP63-01130A	SHIELD-OPTICS;L300,SECC,1.0	1	SNA	
	BP63-01132A	COVER-FAN;L300,PC+ABS,2.0,POP DUCT, BOTT	1	SNA	
	BP63-01149A	COVER-FILTER;SP-L300,PC V0,WHITE	1	SA	
	BP63-01157A	FILTER;CORVETTE,PP,3,110,165,WHITE,RUBBE	1	SA	
	BP63-01238A	COVER-DUCT TOP;L250,PPS G/F 30,2.5	1	SNA	
	BP63-01239A	COVER-DUCT BALLAST;L250,PC G/F 20,2.5	1	SNA	
	BP94-02347A	ASSY PCB MISC-LED;SP-L300W	1	SA	

5. Exploded View & Part List

Location No.	Code No.	Description & Specification	Q'ty	SA/SNA	Remark
	BP98-00721A	ASSY K/D-GEAR;SP-L300W	1	SNA	

5-2. SPL251WEX/EN - Parts List

Service Bom (SA: SERVICE AVAILABLE, SNA: SERVICE NOT AVAILABLE)

Level	Location No.	Code No.	Description & Specification	Q'ty	SA/SNA	Remark
0.1		BP90-00447C	ASSY COVER TOP;L250	1	SNA	
..2	W392	6003-000282	SCREW-TAPTYPE;BH,+,-,B,M3,L8,ZPC(BLK),SW	5	SA	
..2	T0069	AA63-60122S	SPACER-FELT;42A4,FELT,L60,T1.0,D20	1	SNA	
..2	T0069	AA63-60131A	SPACER-FELT;SVP403J,FELT,BLK,T0.5,80x70	1	SNA	
..2	T0069	BP60-00123A	SPACER-FELT;CORVETTE,FELT,200,0.5,50	1	SNA	
..2	T0527	BP68-00679A	LABEL-CAUTION;L300,PET,T0.05,35,25,W/W	1	SNA	
..2	T0527	BP68-00680A	LABEL-CAUTION;L300,PET,T0.05,35,15,W/W	1	SNA	
..2	T0265	BP96-02104C	ASSY COVER P-TOP;SPL300,NEW-2,PC,V0,WHIT	1	SA	
...3	M0081	6003-000115	SCREW-TAPTYPE;BH,+ ,B,M3,L6,ZPC(BLK),SWRC	7	SNA	
...3	AH160	BP61-01674B	HOLDER-DOOR;SP-L300,VE,POM,BLK	1	SNA	
...3		BP61-01682A	BRACKET-SENSOR;SP-L300,SECC,T1.0	1	SNA	
...3	AC310	BP63-01144B	COVER-TOP;SP-L300,VE,PC V0,WHITE	1	SNA	
...3	T0131	BP63-01151B	COVER-LENS;SP-L300,VE,PC V0,BLK	1	SNA	
...3	T0022	BP64-00705B	KNOB-CONTROL;SP-L300,VE,PC V0,WHITE	1	SNA	
...3	AK140	BP64-00706B	KNOB-ENTER;SP-L300,VE,PC V0,WHITE	1	SNA	
...3		BP64-00708A	DOOR-SLIDE;SP-L300,PC V0,WHITE	1	SNA	
...3	L0405	BP64-00710A	INDICATOR-LED;SP-L300,PC,CLEAR	1	SNA	
...3	T0603	BP64-00711A	WINDOW-RMC;SP-L300,PC V0,VIOLET	1	SNA	
...3		BP64-00729A	INLAY-DOOR;SP-L300,PET,SILVER	1	SNA	
...3	CCM1	BN63-02183C	COVER-SHEET;RhcM,PE Vinyl,T0.04,200mm,20	0.4	SNA	
..2	M0081	6003-000264	SCREW-TAPTYPE;PWH,+,-,B,M3,L6,ZPC(WHT),S	1	SA	
..2	CIS1	BN74-00021A	TAPE-FILAMENT;Filament tape,clear,#8915,	0.11	SNA	
0.1		BP90-00448X	ASSY COVER BOTTOM;L300	1	SNA	
..2	T0081	6001-000781	SCREW-MACHINE;PH,+ ,M3,L8,ZPC(BLK),SWRCH1	1	SNA	
..2	T0081	6001-001708	SCREW-MACHINE;BH,+ ,M2,L5,ZPC(BLK)	2	SNA	
..2	W385	6003-000109	SCREW-TAPTYPE;BH,+ ,B,M2.6,L8,ZPC(BLK),SW	1	SNA	
..2	M0081	6003-000115	SCREW-TAPTYPE;BH,+ ,B,M3,L6,ZPC(BLK),SWRC	10	SNA	
..2	S.N.A	6003-000269	SCREW-TAPTYPE;BH,+,-,S,M3,L6,ZPC(WHT),SW	11	SNA	
..2	W392	6003-000282	SCREW-TAPTYPE;BH,+,-,B,M3,L8,ZPC(BLK),SW	29	SA	
..2	M0081	6003-001208	SCREW-TAPTYPE;BH,+ ,S,M4,L12,ZPC(BLK),SWR	1	SNA	
..2	M0081	6003-001439	SCREW-TAPTYPE;BH,+ ,S,M4,L8,ZPC(WHT),SWRC	1	SNA	
..2	T0069	AA63-60001Z	SPACER-FELT;FELT,BLK,T1.0,35X8	4	SNA	
..2	T0136	BP31-00020A	FAN;MCF-S4510AM05-S,SP-P300M,PBT	1	SA	
..2	T0136	BP31-00029H	FAN;2406GL-04W-B29-LB1,CORVETTE,BALL,Rin	1	SA	
..2	T0136	BP31-00037A	FAN;B6025L12B1-BB-OC,CORVETTE,2BALL,150m	1	SA	
..2	M0114	BP61-00868A	HOLDER-WIRE;SCP-50L3HR,EGI,T0.5	4	SNA	
..2	T0952	BP61-01480A	HOLDER-MODULE;SPA400,PC+ABS V0,BLK	1	SNA	
..2		BP61-01584A	BRACKET-GUIDE POWER;SPA800,SECC,T1.0	1	SNA	
..2		BP61-01683A	BRACKET-REAR BOTTOM;SP-L300,SECC,T1.0	2	SNA	
..2	T0139	BP61-01706A	HOLDER-LAMP;BRASS,WHITE,L300,BH,+ ,M3,L6.	2	SNA	
..2	T0010	BP61-01716A	HOLDER-FAN;L300,PPS,2.5	1	SNA	
..2	T0010	BP61-01736A	HOLDER-FAN;L250,PC G/F 20,2.5	1	SNA	
..2		BP63-01149A	COVER-FILTER;SP-L300,PC V0,WHITE	1	SA	
..2	T0139	BP63-01150A	COVER-LAMP;SP-L300,PC V0,BLK	1	SNA	
..2		BP63-01153A	SHEET-PAD H/S;CORVETTE,GP1500,5,25,35,GR	1	SNA	

5. Exploded View & Part List

Level	Location No.	Code No.	Description & Specification	Q'ty	SA/SNA	Remark
..2		BP63-01157A	FILTER;CORVETTE,PP,3,110,165,WHITE,RUBBE	1	SA	
..2		BP63-01158A	SHEET-INSULATION;SP-L300,PC SHEET,T0.5,B	1	SNA	
..2		BP63-01159A	SHEET-INSULATION;SP-L300,PC SHEET,T0.5,B	1	SNA	
..2		BP63-01162A	SHEET-AL;L300, CORVETTE,AL incombustible	1	SNA	
..2	T0136	BP63-01207A	COVER-FAN;L300,PPS,2.0	1	SNA	
..2		BP63-01238A	COVER-DUCT TOP;L250,PPS G/F 30,2.5	1	SNA	
...3	AH506	BP61-01742A	HOLDER-INSERT;L250, CORVETTE,SUM24L,2.0,	1	SNA	
..2	T0527	BP68-00678A	LABEL-CAUTION;D300,PET,T0.05,82,80,W/W	1	SNA	
..2	M0909	BP72-00108A	SPONGE;CORVETTE,POLY URETHANE,3T,15,25	2	SNA	
..2	M0909	BP72-00113A	SPONGE;CORVETTE,POLY URETHANE,3T,8,15	1	SNA	
..2	T0145	BP96-02109C	ASSY COVER P-BOTTOM;SPL300,NEW-2,PC,V0,W	1	SNA	
...3	M0081	6003-001023	SCREW-TAPTYPE;PWH,+, -,B,M3,L10,ZPC(WHT),	2	SNA	
...3	M0126	BP73-00156A	RUBBER-FOOT;SP-A600,SILICON,BLK	3	SNA	
...3	AH209	BP61-01749A	HOLDER-FOOT;SP-L300,ABS,GLAY	2	SNA	
...3	T0531	BP63-01146B	COVER-BOTTOM;SP-L300,VE,PC V0,WHITE	1	SA	
...3	T0254	BP60-00113A	FASTENER-PEM NUT;SP-L300,SUM24L,M4.0,15.	4	SNA	
..2	M0013	BP96-02219C	ASSY COVER P-RAER;L251,PC,V0,BLK	1	SA	
...3	CCM1	BN63-02183K	COVER-SHEET;RhcM,PE Vinyl,T 0.04,250MM,2	0.15	SNA	
...3	M0006	BP63-01287C	COVER-REAR;L251,PC,V0,BLK	1	SNA	
...3	AW129	BP64-00653A	WINDOW-REAR;SPA400,PC,VIOLET	1	SNA	
...3	T0071	BP64-00736C	INLAY-TERMINAL;L251,PC SHEET,T0.5,BLK	1	SNA	
..2	T0952	BP98-00716C	ASSY K/D-OPTIC MODULE;SPL250	1	SNA	
...3	T0081	6002-001405	SCREW-TAPPING;CH,+,DELTA PT,M1.8,L3.5,ZP	4	SNA	
...3	M0081	6003-000115	SCREW-TAPTYPE;BH,+,B,M3,L6,ZPC(BLK),SWRC	2	SNA	
...3	S.N.A	6003-000269	SCREW-TAPTYPE;BH,+, -,S,M3,L6,ZPC(WHT),SW	1	SNA	
...3	T0069	AA63-60001V	SPACER-FELT;FELT,BLK,T0.5,200X15	1	SNA	
...3	T0069	BN60-00027A	SPACER-FELT;42P4A,FELT,L20,BLACK,T0.5,W2	6	SNA	
...3	T0069	BP60-00116A	SPACER-FELT;CORVETTE,25,0.5,25	1	SNA	
...3	AS104	BP63-01230A	SHEET-SCREW;SP-L300,PC SHEET,T0.3,BLK,DI	4	SNA	
...3	T0061	BP63-01237A	COVER-DUCT BOT;L250,PPS G/F 30,2.5	1	SNA	
...4	AH506	BP61-01742A	HOLDER-INSERT;L250, CORVETTE,SUM24L,2.0,	1	SNA	
...3		BP66-00021A	GEAR-RETAINER;L300,PC+GF20%,FOCUS	1	SNA	
...3		BP66-00023A	GEAR-RETAINER;L300,PC+GF20%,ZOOM	1	SNA	
...3	T0652	BP96-02099A	ASSY LENS P;0.63" LCD 3P XGA,optical Mod	1	SA	
...3	M2893	BP39-00327A	LEAD CONNECTOR;D400 / A600,TUBE TYPE,UL	1	SA	
..2	T0139	BP98-00717C	ASSY K/D-LAMP CASE;SPL250	1	SNA	
...3	T0081	6001-000125	SCREW-MACHINE;BH,+,M3,L4,ZPC(WHT),SWRCH1	2	SNA	
...3	W392	6003-000282	SCREW-TAPTYPE;BH,+, -,B,M3,L8,ZPC(BLK),SW	6	SA	
...3	T0139	BP47-00051A	LAMP;230W Ushio lamp,50*50,230W,230~168W	1	SA	
...3	T0069	BP60-00081A	SPACER-FELT;ORCHID,FELT,0.5,x3, D12	2	SNA	
...3	T0139	BP61-01436A	HOLDER-LAMP;A400,SUS301,T0.5,NAT	2	SNA	
...3	T0060	BP61-01438A	SPRING ETC-LAMP;A400,SUS301,T0.2	2	SNA	
...3	T0139	BP61-01664A	HOLDER-LAMP;L300,PPS,2.5	1	SNA	
...3	T0139	BP61-01737A	BRACKET-LAMP;L250,SPT,0.3	1	SNA	
...3	T0139	BP63-01135A	COVER-LAMP;L300,PPS,2.5	1	SNA	
...3	T0139	BP63-01241A	COVER-LAMP;L250,PPS G/F 30,2.5	1	SNA	
...3	T0051	BP67-00362A	LENS-ILL;concave lens for lamp,BSC7,tran	1	SA	
...3		BP64-00704A	HANDLE-LAMP;L300,SUS WIRE,2.0	1	SNA	
...3	T0051	BP61-01660A	BRACKET-LENS;L300,SUS,0.15	1	SNA	
...3	M2893	BP39-00324A	LEAD CONNECTOR;A800 / D400 / L300,RING T	1	SA	
..2	T0952	BP98-00718C	ASSY K/D-HOLDER-MODULE;SPL250	1	SNA	

5. Exploded View & Part List

Level	Location No.	Code No.	Description & Specification	Q'ty	SA/SNA	Remark
...3	W392	6003-000282	SCREW-TAPTYPE;BH,+,-,B,M3,L8,ZPC(BLK),SW	7	SA	
...3	T0136	BP31-00039A	FAN-ASS'Y;B7025M12B2-BB OC,CORVETTE,2BAL	1	SA	
...3	M0909	BP60-00114A	SPACER-FAN;CORVETTE,EVA SPONGE,80,1T,10	2	SNA	
...3	T0952	BP61-01735A	HOLDER-MODULE;L250,PC G/F 20,2.5	1	SNA	
...3		BP63-01130A	SHIELD-OPTICS;L300,SECC,1.0	1	SNA	
...3	T0136	BP63-01132A	COVER-FAN;L300,PC+ABS,2.0,POP DUCT, BOTT	1	SNA	
...3		BP63-01133A	COVER-DUCT IN(SUB);L300,PC+ABS,1.0,POP D	1	SNA	
...3	M0909	BP72-00106A	SPONGE-DUST;CORVETTE,POLY URETHANE,10T,1	1	SNA	
...3	M0114	BP61-00868A	HOLDER-WIRE;SCP-50L3HR,EGI,T0.5	1	SNA	
..2		BP98-00719C	ASSY K/D-DUCT BALLAST;SPL250	1	SNA	
...3	W392	6003-000282	SCREW-TAPTYPE;BH,+,-,B,M3,L8,ZPC(BLK),SW	2	SA	
...3	T0136	BP31-00037A	FAN;B6025L12B1-BB-OC,CORVETTE,2BALL,150m	1	SA	
...3	T0049	BP47-00052A	LAMP-BALLAST;230W PHG231A1BZ,50*50,135*6	1	SA	
...3		BP63-01239A	COVER-DUCT BALLAST;L250,PC G/F 20,2.5	1	SNA	
...3	M0909	BP72-00109A	SPONGE;CORVETTE,POLY URETHANE,3T,5,Inner	1	SNA	
..2		BP98-00721A	ASSY K/D-GEAR;SP-L300W	1	SNA	
...3	T0010	BP61-01714A	HOLDER-FOCUS;DP,BP61-01661A,L300	1	SNA	
....4	T0214	0203-001269	TAPE-OPP MASKING;#301,T0.06,W75,L50000,N	0.01	SNA	
....4		6902-000611	BAG ROLL;HDPE/NITRON,T1.0,50G,45446.400g	0.01	SNA	
....4		AA61-01109H	CASE-PP BOX;PP,385,310,35,NTR	1	SNA	
....4		AA69-00368F	PAD-PLATE;CB-CB SW-2,310,YEL,385,219.000	1	SNA	
....4		AA69-00553M	MASTER CARTON;CB-CB DW-3,390,315,330,YEL	1	SNA	
....4	T0010	BP61-01661A	HOLDER-FOCUS;L300,PC,3.0	1	SNA	
...3		BP66-00022A	GEAR-MOVEMENT;L300,POM,FOCUS	1	SNA	
...3		BP66-00024A	GEAR-MOVEMENT;L300,POM,ZOOM	1	SNA	
..2	T0081	BP61-01746A	BRACKET-MAIN;L300,SECC,0.5	1	SNA	
..2	T0411	BP63-01147B	COVER-SIDE L;SP-L300,VE,PC V0,BLK,LEFT	1	SA	
..2	T0412	BP63-01148B	COVER-SIDE R;SP-L300,VE,PC V0,BLK,RIGHT	1	SNA	
...3	T0254	BP60-00038A	FASTENER-PEM NUT;SP-H700,SUM24L,M4,L10,Y	1	SNA	
..2	T0382	BP61-00509C	HOLDER-CARE;PJT,ACRYL-FOAM,T0.25,W20.0mm	0.18	SNA	
0.1		BP91-02148A	ASSY MISC-CHASSIS;SPL251WEX/EN	1	SNA	
..2	T0764	BP44-01011A	SMPS-PROJECTOR MAIN;L220,BOOST,310W,AC10	1	SA	
..2	T0146	BP94-02344A	ASSY PCB MISC-SUB BOARD;SP-L300W,corvett	1	SA	
...3		0202-001463	SOLDER-WIRE;LFC2-W3.0,-,D3,99.79Sn/0.2Cu	0.231	SNA	
...3		0202-001608	SOLDER-WIRE FLUX;LFC7-107,D0.8,99.3Sn/0.	0.003	SNA	
...3		0204-002420	SOLVENT;1M-1000,C3H7OH,96	0.17	SNA	
...3		0204-002607	FLUX;DF-234U,13%,14KG,Gravity 0.82	0.108	SNA	
...3	D0254	0609-001204	MODULE REMOCON;HORIZONTAL,6.5mm,TRAY	1	SA	
...3	PR17	2001-001153	R-CARBON(S);47ohm,5%,1/2W,AA,TP,2.4x6.4m	1	SC	
...3	C	2401-000444	C-AL;10uF,20%,25V,GP,TP,5x5mm,5	1	SA	
...3	SW100	3409-000178	SWITCH-LEVER;12V,100mA,SPDT,27deg	1	SA	
...3		3711-004270	HEADER-BOARD TO CABLE;BOX,2P,1R,2mm,ANGL	1	SA	
...3		3711-004386	HEADER-BOARD TO CABLE;BOX,3P,1R,2mm,ANGL	1	SA	
...3		BP41-00339C	PCB SUB;CORVETTE,FR-4,2,0.1,1.6,157x127,	1	SNA	
..2	L0405	BP94-02347A	ASSY PCB MISC-LED;SP-L300W	1	SA	
...3		0202-001463	SOLDER-WIRE;LFC2-W3.0,-,D3,99.79Sn/0.2Cu	0.031	SNA	
...3		0202-001608	SOLDER-WIRE FLUX;LFC7-107,D0.8,99.3Sn/0.	0.003	SNA	
...3		0204-002420	SOLVENT;1M-1000,C3H7OH,96	5.03	SNA	
...3		0204-002607	FLUX;DF-234U,13%,14KG,Gravity 0.82	3.271	SNA	
...3	L0405	BP97-01323D	ASSY SMD-LED;SP-L300	1	SNA	
....4		0202-001477	SOLDER-CREAM;LST309-M,D20~45um,96.5Sn/3A	0.02	SNA	

5. Exploded View & Part List

Level	Location No.	Code No.	Description & Specification	Q'ty	SA/SNA	Remark
....4		0403-001137	DIODE-ZENER;VLZ9V1B,8.57/9.01V,500mW,SOD	1	SNA	
....4	L0405	0601-001896	LED;SMD,BLUE,1.6x0.8x0.4mm,470,1.6x0.8x0	2	SA	
....4	L0405	0601-001915	LED;SMD,RED,1.6x0.8x0.6mm,660nm,1.6x0.8x	1	SA	
....4		3711-005743	HEADER-BOARD TO CABLE;BOX,5P,1R,1.25mm,A	1	SA	
....4	L0405	BP41-00338B	PCB-LED;SP-L300,FR-4,2,0,1.6,190*180.5,C	1	SNA	
..2	M0014	BP94-02369A	ASSY PCB MISC-MAIN;SPL251WEX/EN	1	SA	
...3		0202-001463	SOLDER-WIRE;LFC2-W3.0,-,D3,99.79Sn/0.2Cu	1.747	SNA	
...3		0202-001608	SOLDER-WIRE FLUX;LFC7-107,D0.8,99.3Sn/0.	0.25	SNA	
...3		0204-002420	SOLVENT;1M-1000,C3H7OH,96	4.58	SNA	
...3		0204-002607	FLUX;DF-234U,13%,14KG,Gravity 0.82	2.982	SNA	
...3	T0174	BP97-01366A	ASSY SMD;SPL251WEX/E	1	SNA	
....4		0202-001477	SOLDER-CREAM;LST309-M,D20~45um,96.5Sn/3A	2.472	SNA	
....4		0401-001056	DIODE-SWITCHING;MMBD4148SE,100V,200mA,SO	22	SA	
....4	D0254	0402-000553	DIODE-SCHOTTKY;SS24/B240,40V,2000mA,DO-2	1	SA	
....4		0403-000002	DIODE-ZENER;VLZ5V6B,5.45/5.73V,500mW,SOD	2	SA	
....4		0403-000771	DIODE-ZENER;VLZ6V2B,5.96-6.27V,500mW,SOD	6	SA	
....4		0403-001052	DIODE-ZENER;RD8.2MB,7.7-8.7V,200mW,SOT-2	1	SA	
....4	D0254	0404-001020	DIODE-SCHOTTKY;BAT54C,30V,200mA,SOT-23,T	2	SA	
....4	Q101	0501-000445	TR-SMALL SIGNAL;KTC3875S-Y,NPN,150mW,SOT	7	SA	
....4	PQ02	0501-002080	TR-SMALL SIGNAL;2SC2412K,NPN,200mW,SC-59	1	SA	
....4		0504-001129	TR-DIGITAL;KRC104S-I,NPN,200MW,47K/47K,S	3	SA	
....4	CEQ2	0505-000110	FET-SILICON;2N7002,N,60V,115mA,7.5ohm,0.	4	SA	
....4	Q409	0505-001170	FET-SILICON;FDS9933A,P,-20V,3.8A,0.075oh	1	SA	
....4	Q409	0505-002203	FET-SILICON;RSS100N03,N,30V,+10A,0.013o	1	SA	
....4	L0405	0601-001313	LED;SMD,GRN,2X1.8MM,565NM,3.16X1.6X1.1MM	2	SA	
....4	IC104	0801-002171	IC-CMOS LOGIC;74LCX125,BUS BUFFER,SOP,14	1	SA	
....4	M0215	0801-002198	IC-CMOS LOGIC;74LVC14,INVERTER,SOP,14P,1	1	SA	
....4	IC104	0801-002393	IC-CMOS LOGIC;74VHC244,BUS BUFFER,TSSOP,	1	SA	
....4	IC104	0801-002765	IC-CMOS LOGIC;74LVC1G07,SINGLE BUFFER/DR	1	SA	
....4	IC104	0801-002858	IC-CMOS LOGIC;74HCT1G126GV,1 GATE BUFFER	2	SA	
....4		1001-001109	IC-ANALOG SWITCH;FST3125M,BUS SWITCH & C	2	SA	
....4		1003-002164	IC-LEVEL DRIVER;L3E01060P0B,LQFP,48P,7x7	3	SA	
....4		1006-001266	IC-LINE TRANSCEIVER;3232,TSSOP,16P,174MI	1	SA	
....4	IC112	1103-000129	IC-EEPROM;24C02,2Kbit,256x8,SOP,8P,5x4mm	3	SA	
....4	IC112	1103-001385	IC-EEPROM;AT24C256,256Kbit,32Kx8,SOP,8P,	2	SA	
....4		1105-001838	IC-DDR SDRAM;EM6A9160TS0A-5G,DDR SDRAM,1	1	SA	
....4	DU410	1201-002187	IC-OP AMP;AD8009JRT,SOT-23,TP,5P,2.9x1.6	3	SA	
....4	T0085	1201-002487	IC-AUDIO AMP;MAX9728A,QFN,12P,3x3mm,DUAL	1	SA	
....4	T0124	1201-002677	IC-POWER AMP;NTP3100,QFN56,56P,8x8mm,DUA	1	SA	
....4	DU501	1203-001824	IC-VOL. DETECTOR;7042,SOT-89,3P,PLASTIC,	1	SA	
....4	T0087	1203-002835	IC-POSI.FIXED REG.;KIA7805AF,DPAK,3P,6.6	1	SA	
....4	T0087	1203-002842	IC-POSI.FIXED REG.;AP1117D-33,TO-252,3P,	1	SA	
....4	IC012	1203-002995	IC-POSI.ADJUST REG.;AP1117D,TO-252,3P,6.	1	SA	
....4	T0087	1203-003703	IC-POSI.FIXED REG.;AP1117E-18A,SOT-223,3	1	SA	
....4		1203-004363	IC-VOL. DETECTOR;RT9818C-29PV,SOT-23,3P,	1	SA	
....4		1203-004364	IC-VOL. DETECTOR;RT9818C-42PV,SOT-23,3P,	1	SA	
....4		1203-004844	IC-DC/DC CONVERTER;BD9307FVM-TR,MSOP,8P,	1	SA	
....4	T0087	1203-004893	IC-POSI.FIXED REG.;G994F1U,SOP,8P,4.9x3.	4	SA	
....4		1203-005440	IC-VOL.CONVERTER;ADM660,TSSOP,8P,5x4.4mm	1	SA	
....4	IC012	1203-005756	IC-POSI.ADJUST REG.;AP7173-SP,SOP-8L-EP,	3	SA	
....4		1203-005819	IC-DC/DC CONVERTER;MP8706AEN-C247-LF-Z,S	1	SNA	

5. Exploded View & Part List

Level	Location No.	Code No.	Description & Specification	Q'ty	SA/SNA	Remark
....4	IC118	1204-002951	IC-VIDEO PROCESS;L3E07111K0A,BGA,324P,27	1	SA	
....4		1205-003294	IC-CONTROLLER;G793D5U,TSSOP,20P,6.5x4.4m	1	SA	
....4	M0019	1205-003579	IC-LCD CONTROLLER;L3E06150S2A,LQFP,100P,	3	SA	
....4	M0019	1205-003694	IC-LCD CONTROLLER;SEMS50-LF,LQFP,256P,30	1	SA	
....4	T0900	1404-001386	THERMISTOR-NTC;10Kohm,3975K,2.1mW/C,TP	1	SA	
....4		1405-001233	VARISTOR;30Vdc,5A,1.6x0.8x0.8mm,TP	24	SA	
....4	KAR21	2007-000070	R-CHIP;0ohm,5%,1/10W,TP,1608	16	SNA	
....4	AR150	2007-000078	R-CHIP;1Kohm,5%,1/10W,TP,1608	2	SA	
....4	MR0P1	2007-000090	R-CHIP;10Kohm,5%,1/10W,TP,1608	1	SA	
....4	AR108	2007-000097	R-CHIP;47Kohm,5%,1/10W,TP,1608	2	SA	
....4	MR16	2007-000098	R-CHIP;56Kohm,5%,1/10W,TP,1608	1	SNA	
....4	R512	2007-000107	R-CHIP;470Kohm,5%,1/10W,TP,1608	1	SNA	
....4	MR166	2007-000119	R-CHIP;560ohm,5%,1/10W,TP,1608	1	SNA	
....4	R1P151	2007-000121	R-CHIP;820ohm,5%,1/10W,TP,1608	1	SNA	
....4	R105	2007-000138	R-CHIP;100ohm,5%,1/16W,TP,1005	95	SNA	
....4	AR49	2007-000140	R-CHIP;1Kohm,5%,1/16W,TP,1005	14	SNA	
....4	MR306	2007-000141	R-CHIP;2.2Kohm,5%,1/16W,TP,1005	4	SNA	
....4	R319	2007-000143	R-CHIP;4.7Kohm,5%,1/16W,TP,1005	20	SNA	
....4	R104	2007-000148	R-CHIP;10Kohm,5%,1/16W,TP,1005	58	SNA	
....4	HDR9	2007-000152	R-CHIP;20Kohm,5%,1/16W,TP,1005	1	SNA	
....4	MR36	2007-000153	R-CHIP;22Kohm,5%,1/16W,TP,1005	7	SNA	
....4	MR13	2007-000157	R-CHIP;47Kohm,5%,1/16W,TP,1005	4	SNA	
....4	DR39	2007-000162	R-CHIP;100Kohm,5%,1/16W,TP,1005	3	SNA	
....4	R509	2007-000170	R-CHIP;1Mohm,5%,1/16W,TP,1005	1	SNA	
....4	R111	2007-000171	R-CHIP;0ohm,5%,1/16W,TP,1005	47	SNA	
....4	HDR17	2007-000172	R-CHIP;10ohm,5%,1/16W,TP,1005	5	SNA	
....4	R338	2007-000173	R-CHIP;22ohm,5%,1/16W,TP,1005	20	SNA	
....4	UR23	2007-000174	R-CHIP;47ohm,5%,1/16W,TP,1005	13	SNA	
....4		2007-000231	R-CHIP;1.3Kohm,1%,1/10W,TP,1608	1	SA	
....4	UR53	2007-000305	R-CHIP;10Mohm,5%,1/10W,TP,1608	1	SNA	
....4	ZR45	2007-000329	R-CHIP;11Kohm,5%,1/10W,TP,1608	3	SA	
....4	PRS34	2007-000516	R-CHIP;2.7Kohm,1%,1/10W,TP,1608	1	SA	
....4	AR60	2007-000708	R-CHIP;3.9Kohm,1%,1/10W,TP,1608	1	SNA	
....4	RF03	2007-000828	R-CHIP;39Kohm,1%,1/10W,TP,1608	1	SA	
....4	R419	2007-000882	R-CHIP;4.7ohm,5%,1/10W,TP,1608	8	SNA	
....4	DR37	2007-000932	R-CHIP;470ohm,5%,1/16W,TP,1005	3	SNA	
....4		2007-001285	R-CHIP;5.6ohm,5%,1/16W,TP,1005	4	SA	
....4	OTR1	2007-001292	R-CHIP;33ohm,5%,1/16W,TP,1005	5	SNA	
....4		2007-001295	R-CHIP;39ohm,5%,1/16W,TP,1005	1	SA	
....4	MR9	2007-001307	R-CHIP;180ohm,5%,1/16W,TP,1005	1	SNA	
....4	R16	2007-001313	R-CHIP;330ohm,5%,1/16W,TP,1005	1	SNA	
....4	R326	2007-001325	R-CHIP;3.3Kohm,5%,1/16W,TP,1005	4	SNA	
....4		2007-001342	R-CHIP;2Mohm,5%,1/10W,TP,1608	1	SA	
....4	R1	2007-002425	R-CHIP;1ohm,5%,1/10W,TP,1608	6	SNA	
....4		2007-002900	R-CHIP;11Kohm,1%,1/10W,TP,1608	1	SNA	
....4		2007-007008	R-CHIP;300ohm,5%,1/16W,TP,1005	7	SNA	
....4	R365	2007-007107	R-CHIP;100Kohm,1%,1/16W,TP,1005	15	SNA	
....4		2007-007136	R-CHIP;4.7Kohm,1%,1/16W,TP,1005	3	SNA	
....4	DR4	2007-007142	R-CHIP;10Kohm,1%,1/16W,TP,1005	9	SNA	
....4		2007-007239	R-CHIP;31.6Kohm,1%,1/10W,TP,1608	1	SNA	
....4		2007-007309	R-CHIP;12Kohm,1%,1/16W,TP,1005	4	SA	

5. Exploded View & Part List

Level	Location No.	Code No.	Description & Specification	Q'ty	SA/SNA	Remark
....4		2007-007317	R-CHIP;2.2Kohm,1%,1/16W,TP,1005	2	SA	
....4		2007-007318	R-CHIP;1Kohm,1%,1/16W,TP,1005	4	SNA	
....4		2007-007319	R-CHIP;390ohm,1%,1/16W,TP,1005	1	SNA	
....4		2007-007463	R-CHIP;1.1Kohm,1%,1/16W,TP,1005	1	SA	
....4		2007-007600	R-CHIP;3.48Kohm,1%,1/10W,TP,1608	1	SA	
....4	R133	2007-007651	R-CHIP;9.1Kohm,1%,1/10W,TP,1608	2	SA	
....4		2007-007791	R-CHIP;9.1Kohm,1%,1/16W,TP,1005	2	SNA	
....4	MR11	2007-008015	R-CHIP;75ohm,1%,1/16W,TP,1005	9	SNA	
....4		2007-009853	R-CHIP;1.6Kohm,1%,1/16W,TP,1005	1	SNA	
....4	RM512	2011-000881	R-NETWORK;33ohm,5%,1/16W,L,CHIP,8P,TP,3.	5	SA	
....4	RN22	2011-001001	R-NETWORK;0ohm,5%,1/16W,L,CHIP,8P,TP,3.2	1	SA	
....4	PRN7	2011-001011	R-NETWORK;10Kohm,5%,1/16W,L,CHIP,8P,TP,3	4	SA	
....4	RP102	2011-001087	R-NETWORK;75ohm,5%,1/16W,L,CHIP,8P,TP,3.	3	SNA	
....4	MR38	2011-001093	R-NETWORK;100ohm,5%,1/16W,L,CHIP,8P,TP,3	5	SA	
....4	DAR09	2011-001262	R-NETWORK;22ohm,5%,1/16W,L,CHIP,8P,TP,2.	6	SA	
....4	DRP9	2011-001474	R-NETWORK;47ohm,5%,1/16W,L,CHIP,8P,TP,2.	28	SA	
....4		2011-001506	R-NETWORK;10Kohm,5%,1/16W,L,CHIP,4P,TP,1	1	SNA	
....4		2011-001527	R-NETWORK;4.7Kohm,5%,1/16W,L,CHIP,4P,TP,	1	SNA	
....4	AC14	2203-000189	C-CER,CHIP;100nF,+80-20%,25V,Y5V,TP,1608	2	SNA	
....4	PC43	2203-000233	C-CER,CHIP;0.1nF,5%,50V,C0G,TP,1005	11	SA	
....4	DC1	2203-000386	C-CER,CHIP;.015nF,5%,50V,C0G,TP,1005	2	SA	
....4	C254	2203-000438	C-CER,CHIP;1nF,10%,50V,X7R,TP,1005	23	SA	
....4	C507	2203-000489	C-CER,CHIP;2.2nF,10%,50V,X7R,TP,1005	6	SA	
....4	AD480	2203-000550	C-CER,CHIP;0.02nF,5%,50V,C0G,1005	2	SNA	
....4	MC9	2203-000627	C-CER,CHIP;.022nF,5%,50V,C0G,TP,1005	2	SNA	
....4	AD480	2203-000679	C-CER,CHIP;0.027nF,5%,50V,C0G,1005	2	SNA	
....4	DC25	2203-000812	C-CER,CHIP;.033nF,5%,50V,C0G,1005	2	SA	
....4	AAC45	2203-000925	C-CER,CHIP;470nF,+80-20%,50V,Y5V,2012	2	SA	
....4	6MC22	2203-000975	C-CER,CHIP;47nF,10%,25V,X7R,TP,1608,-	17	SNA	
....4	AC124	2203-000998	C-CER,CHIP;0.047nF,5%,50V,C0G,1608	1	SNA	
....4	MC22R	2203-001596	C-CER,CHIP;2200nF,+80-20%,50V,Y5V,2012	7	SA	
....4	AVC51	2203-001598	C-CER,CHIP;2200nF,+80-20%,16V,Y5V,2012	3	SNA	
....4	AD480	2203-002285	C-CER,CHIP;10nF,10%,50V,X7R,1005	11	SNA	
....4	C33	2203-002687	C-CER,CHIP;1.2nF,10%,50V,X7R,TP,1005	4	SA	
....4	AD480	2203-002720	C-CER,CHIP;10nF,10%,25V,X7R,TP,1005	6	SNA	
....4	C178	2203-002793	C-CER,CHIP;1000nF,+80-20%,25V,Y5V,2012	1	SNA	
....4	C100	2203-005065	C-CER,CHIP;1000nF,+80-20%,10V,Y5V,1608	4	SNA	
....4	AD480	2203-005344	C-CER,CHIP;22nF,10%,25V,X7R,TP,1005,-	4	SNA	
....4	C410	2203-005384	C-CER,CHIP;4700nF,+80-20%,10V,Y5V,TP,201	9	SNA	
....4	AD480	2203-005437	C-CER,CHIP;10000nF,+80-20%,10V,Y5V,3216	29	SNA	
....4	AD480	2203-005533	C-CER,CHIP;1000nF,20%,6.3V,X7R,TP,1608	2	SNA	
....4	PC8	2203-005642	C-CER,CHIP;0.22nF,5%,50V,NP0,1005	4	SNA	
....4	AD480	2203-005809	C-CER,CHIP;1000nF,10%,16V,X7R,TP,2012	1	SC	
....4	EC9	2203-005834	C-CER,CHIP;22000nF,+80-20%,10V,Y5V,3216	2	SA	
....4	PC11	2203-006141	C-CER,CHIP;1000nF,10%,16V,X5R,1608	3	SNA	
....4	C102	2203-006158	C-CER,CHIP;100nF,10%,16V,X7R,1005	23	SNA	
....4	AD480	2203-006333	C-CER,CHIP;10000nF,20%,16V,X5R,TP,3216	2	SNA	
....4	AD480	2203-006336	C-CER,CHIP;10000nF,10%,25V,X5R,3216	17	SA	
....4	C125	2203-006361	C-CER,CHIP;10000nF,10%,10V,X5R,TP,2012	16	SC	
....4	HDC11	2203-006562	C-CER,CHIP;1000nF,10%,10V,X5R,TP,1005	9	SNA	
....4	AD480	2203-006681	C-CER,CHIP;100nF,+80-20%,25V,Y5V,1005	180	SNA	

5. Exploded View & Part List

Level	Location No.	Code No.	Description & Specification	Q'ty	SA/SNA	Remark
....4	T0052	2703-000125	INDUCTOR-SMD;10uH,10%,2012	6	SA	
....4	T0052	2703-003559	INDUCTOR-SMD;4.7uH,20%,8080	1	SNA	
....4	T0052	2704-000018	INDUCTOR-SMD-ARRAY;15uH,2000mA,2,0.124oh	2	SA	
....4	X202	2801-000258	CRYSTAL-SMD;0.032768MHz,20ppm,SMD,12.5pF	1	SA	
....4	X202	2801-003667	CRYSTAL-SMD;14.31818MHz,30ppm,28-AAN,16p	1	SA	
....4	X202	2801-003773	CRYSTAL-SMD;12MHz,30ppm,28-AAN,20pF,50oh	1	SA	
....4	F103	2901-001506	FILTER-EMI SMD;5V,0.13A,0pF,2x1x0.5mm,TP	2	SA	
....4		3201-000358	IC-SENSOR;ADXL345,LGA,14P,3x5mm,2.5V,130	1	SNA	
....4	L2011	3301-001145	BEAD-SMD;60ohm,4516,TP,70ohm/45MHz,82ohm	4	SNA	
....4	T0568	3301-001163	BEAD-SMD;80ohm,2012,TP,192ohm/867MHz	10	SNA	
....4	T0568	3301-001404	BEAD-SMD;30ohm,2012,TP,15.9OHM/30MHz	21	SA	
....4	BD401	3301-001569	BEAD-SMD;600ohm,2012,1000mA,TP,520ohm/90	28	SNA	
....4		3701-001293	CONNECTOR-HDMI;19P,2R,FEMALE,SMD-A,AU	1	SA	
....4	AC510	3708-002562	CONNECTOR-FPC/FFC/PIC;36P,0.5mm,SMD-A,AU	3	SNA	
....4		3711-000456	HEADER-BOARD TO CABLE;BOX,4P,1R,1.25mm,S	1	SA	
....4		3711-000862	HEADER-BOARD TO CABLE;BOX,3P,1R,1.25MM,S	2	SA	
....4		3711-005291	HEADER-BOARD TO CABLE;BOX,2P,1R,2MM,SMD-	2	SA	
....4		3711-005292	HEADER-BOARD TO CABLE;BOX,3P,1R,2MM,SMD-	3	SA	
....4	CON5	3711-005293	HEADER-BOARD TO CABLE;BOX,6P,1R,2MM,SMD-	1	SNA	
....4		3711-005499	HEADER-BOARD TO CABLE;BOX,8P,1R,1.25mm,S	1	SA	
....4		3711-005509	HEADER-BOARD TO CABLE;BOX,4P,1R,1.25mm,S	1	SA	
....4		3711-005543	HEADER-BOARD TO CABLE;BOX,6P,1R,1.25mm,S	1	SA	
....4	CON_US	3711-005616	HEADER-BOARD TO CABLE;BOX,10P,1R,2mm,SMD	1	SNA	
....4	CON5	3711-005872	HEADER-BOARD TO CABLE;BOX,5P,1R,2MM,SMD-	1	SA	
....4	T0010	BN27-00009A	COIL CHOKE;SMD 12x12x6,EOS,33uH,15%,0.12	1	SA	
....4	T0077	BP41-00381A	PCB MAIN;Projector L251,FR-4,4,0,1.2T,15	1	SNA	
....4	M0018	BP97-01367A	ASSY MICOM;2009.08.07,1107-001709	1	SNA	
....5		1107-001735	IC-NOR FLASH;MX25L3205DM2I-12G,32Mbit,16	1	SNA	
....4	M0018	BP97-01368A	ASSY MICOM;2009.08.07,0903-001552	1	SNA	
....5	IC520	0903-001552	IC-MICROCONTROLLER;WT61P8-RG480WT,LQFP,4	1	SNA	
....4		0501-000434	TR-SMALL SIGNAL;KTC3875S-GR,NPN,150mW,SO	1	SA	
....4	MR13	2007-000092	R-CHIP;15Kohm,5%,1/10W,TP,1608	2	SA	
....4		2007-007156	R-CHIP;1ohm,5%,1/16W,TP,1005	2	SNA	
....4		3601-001374	FUSE-SURFACE MOUNT;32V,5A,FAST-ACTING,Hi	1	SNA	
....4		0401-001049	DIODE-SWITCHING;LS4148,75V,150mA,SOD-80,	5	SA	
....4		1205-003201	IC-BUS SWITCH;TC7WB125FK,SSOP,8P,2x2.3mm	2	SA	
...3		6902-000331	BAG AIR CAP;LDPE,T0.05,W250,L300,PINK,13	1	SNA	
...3		BN68-02191A	LABEL-RATING;PET,T0.05,20,10,W/W	1	SNA	
...3		BP96-02218A	ASSY BOARD P-TERMINAL JACK;SP-L251,CT500	1	SNA	
..2	M0020	BP96-02118B	ASSY BOARD P-KEY COUNTR0L;SP-L300W,CT500	1	SA	
..2	M9059	BP96-02123A	ASSY SENSOR P-NTC BOARD;SP-L300W,CT5000-	1	SA	
0.1		BP91-02149A	ASSY FIXING;SPL251WEX/EN	1	SNA	
..2	T0016	0604-001393	PHOTO-INTERRUPTER;TR,75mW,BGA,TR	1	SA	
..2	T0121	3301-001456	CORE-FERRITE;15x7x18MM	1	SNA	
..2	T0570	4712-001057	THERMOSTAT;125/250V,100+-5C,65+-10C	1	SA	
..2	W392	6003-000282	SCREW-TAPTYPE;BH,+,-,B,M3,L8,ZPC(BLK),SW	1	SA	
..2	M0081	6006-001096	SCREW-TAPTYPE;BH,+WP,B,M4.0,L12,ZPC(BLK)	4	SNA	
..2	T0073	AA63-00837A	GASKET-EMI;HP-P5581,Conductive Fabric,1.	1	SNA	
..2	M2893	BN39-00522B	LEAD CONNECTOR;BI17/19BS,UL1061#28,4P,20	1	SA	
..2	M2893	BN39-01135A	LEAD CONNECTOR;SP-L300W,UL1061#28,8p/3p,	1	SA	
..2		BN68-02191A	LABEL-RATING;PET,T0.05,20,10,W/W	2	SNA	

5. Exploded View & Part List

Level	Location No.	Code No.	Description & Specification	Q'ty	SA/SNA	Remark
..2	M2893	BP39-00269C	LEAD CONNECTOR;SP-L300W,UL1061#28,3P,200	1	SA	
..2	M2893	BP39-00279A	LEAD CONNECTOR;Steno,UL1061 #28,6pin,200	1	SA	
..2	T0559	BP61-01681A	HOLDER-SENSOR;CORVETTE,ABS	1	SNA	
..2	M0131	BP63-01166A	GASKET;SP-L300,Aluminium Foil tape,0.07m	1	SNA	
..2	T0082	BP96-02098A	ASSY SPEAKER P;16m,Corvette,L300 Project	1	SA	
..2	T0082	BP96-02098B	ASSY SPEAKER P;16m,Corvette,L300 Project	1	SA	
..2	M2893	BP39-00247C	LEAD CONNECTOR;SP-L251,UL1617#22,3p,450m	1	SA	
..2	FT532	2901-001602	FILTER-EMI AC LINE;250V,6A,ENEC/VDE/TUV/	1	SA	
..2	M2893	BN39-01130M	LEAD CONNECTOR;SP-L251,UL1007#26,10P,100	1	SA	
0.1	T0527	BP92-02034A	ASSY LABEL;SP-D300BX	1	SNA	
..2	T0346	BN68-00533D	LABEL RATING-00;ALL,SS,PE,T0.05,68*48,BL	1	SNA	
..2	T0527	AA68-03752B	LABEL-STICKER;WW,ALL,Art Paper(90g),25,3	1	SNA	
0.1		BP92-02042A	ASSY P/MATERIAL;SP-L300W	1	SNA	
..2	T0214	0203-001595	TAPE-OPP MASKING;OPP-2,0.075,75,800M,CLR	1.57	SNA	
..2		6902-000061	BAG AIR;LDPE,T0.2,W500,L1000,TRP,370.000	1	SNA	
..2		6902-000379	BAG AIR;LDPE,T0.2,W1000,L1800,TRP,1260.0	1	SNA	
..2		6902-000604	BAG WRAPPING;LDPE,T0.02,W500,L10000,TRP,	1.05	SNA	
..2		6902-000609	BAG ROLL;LDPE,T0.05,W2400,L1000,TRP,30.0	0.02	SNA	
..2	T0524	6902-000817	BAG PE;HDPE/NITRON,T0.015/T0.5(DOUBLE),W	1	SNA	
..2		BH69-00457A	PACKING INNER-00,PAD;COMM,T3.0,1130,1180	1	SNA	
..2		BH69-40383L	PACKING INNER-00,PAD;COMM,CB-SW4,1200,90	1	SNA	
..2		BN69-00391P	PAD-ANGLE;T4,50,2200,YEL,56g	1	SNA	
..2	T0603	BN69-00617J	PALLET-PACKING;TS15AS,1150,780,120,0g	1	SNA	
..2	T0246	BP69-00515A	CUSHION-SET;SPL300,EPS,166g,WHITE,C=0.02	1	SNA	
0.1		BP92-02043F	ASSY BOX;SPL250WX/EN	1	SNA	
..2	T0527	BH68-00634A	LABEL BOX-00;ALL MODEL,MOJO 90G,80,75,WH	1	SNA	
..2		BP69-00511G	BOX-01,SET;SP-L200,CB,A-01,SW-50,YEL,W38	2	SNA	
0.1	M0045	BP92-02073A	ASSY ACCESSORY;SPL251WEX/EN	1	SNA	
..2	T0268	3903-000452	CBF-POWER CORD;DT,EU/KR,CP3,IEC320 C13,2	1	SA	
..2	M0114	BN39-00244G	CBF SIGNAL;D-sub cable,15P/15P,20276N,15	1	SA	
..2	T0074	BP59-00135A	REMOCON;L300,TM91,SAMSUNG,CORERIVER,23,G	1	SA	
..2	M0045	BP96-02215A	ASSY ACCESSORY;SPL251WEX/EN	1	SNA	
...3	T0524	6902-000110	BAG PE;LDPE,T0.05,W250,L400,TRP,28,2,9.2	1	SNA	
...3	M9889	BN63-01798B	CLOTH-CLEAN;cloth,180,200,sea blue,ToC	1	SNA	
...3	T0527	BN68-00513A	LABEL-E,PASS;ALL MODEL,YUPO(110G),50X15,	1	SNA	
...3		BN68-01925F	MANUAL FLYER-WARRANTY CARD;comm,Samsung,	1	SNA	
...3		BP59-00134G	S/W DRIVER-00,IB;SP-L201,SP-L221,SP-L251	1	SNA	
...3		BP68-00655A	MANUAL FLYER-CAUTION;comm,Samsung,19 Lan	1	SNA	
...3		BP68-00676G	MANUAL FLYER-QSG;SP-L201,SP-L221,SP-L251	1	SNA	
...3		BP68-00683A	MANUAL FLYER-WARRANTY CARD;comm,Samsung,	1	SNA	
...3		BN96-01800H	ASSY ACCESSORY-SCREW ZIPPER;L300,M4,L10(1	SNA	
....4		6902-000683	BAG ZIPPER;LDPE,T0.05,W60,L60,TRP,4-PE M	1	SNA	
....4	M0081	6003-000337	SCREW-TAPTYPE;BH,+,S,M4,L10,ZPC(BLK),SWR	4	SA	
...3		AA68-03242U	MANUAL FLYER-SAFETY GUIDE;comm,Samsung,1	1	SNA	
...3		BN68-02462B	LABEL-STICKER;CIS,T0.05,93,40,TV-MONITOR	1	SNA	