

SECTION 4 EXPLODED VIEWS

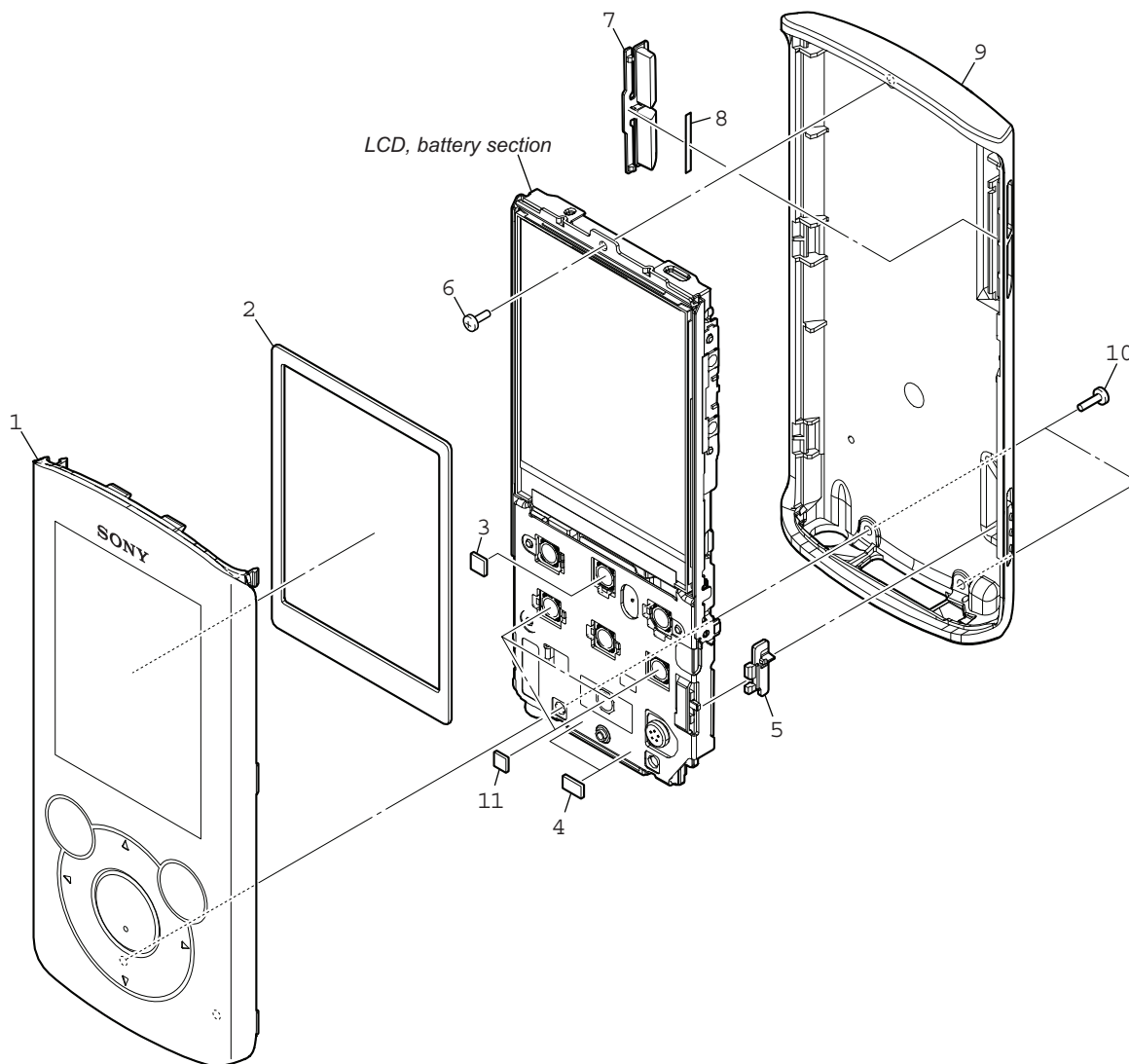
Note:

- -XX and -X mean standardized parts, so they may have some difference from the original one.
- Items marked "*" are not stocked since they are seldom required for routine service. Some delay should be anticipated when ordering these items.
- The mechanical parts with no reference number in the exploded views are not supplied.
- Color Indication of Appearance Parts Example:
KNOB, BALANCE (WHITE) . . . (RED)

↑
↑

 Parts Color Cabinet's Color
- Refer to "COLOR VARIATION" in the "SERVICING NOTES" (page 7) about color variation of model and destination.

4-1. CASE SECTION



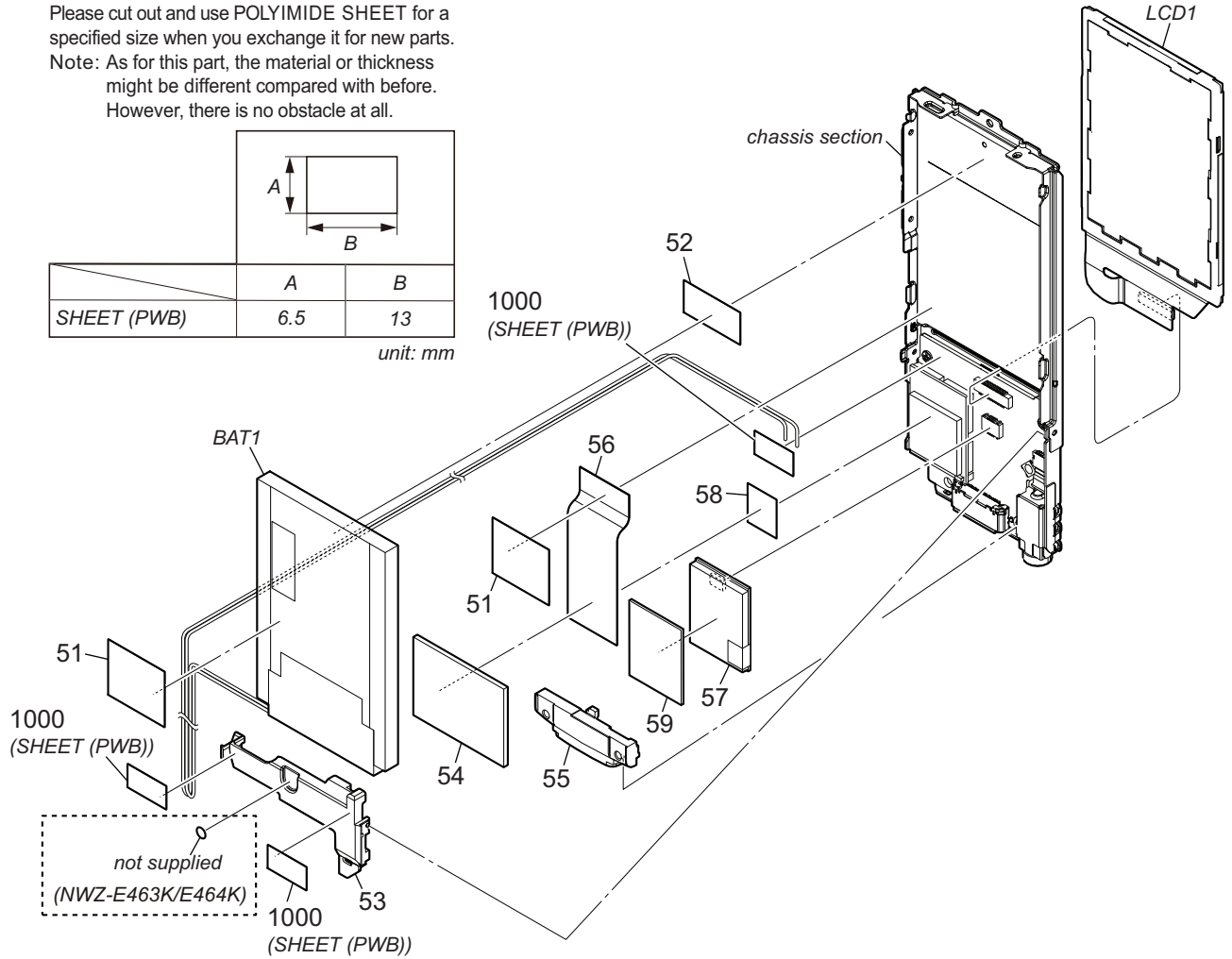
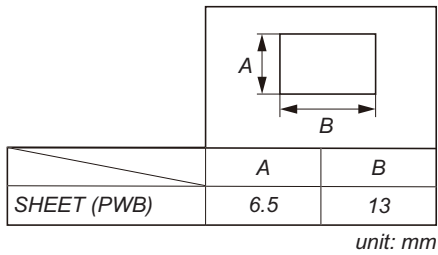
Ref. No.	Part No.	Description	Remark	Ref. No.	Part No.	Description	Remark
1	X-2581-503-1	CASE (FRONT) (B) ASSY (BLACK)		7	4-283-364-41	BUTTON (VOL) (GREEN)	
1	X-2581-684-1	CASE (FRONT) (R) ASSY (RED)		7	4-283-364-51	BUTTON (VOL) (GOLD)	
1	X-2581-685-1	CASE (FRONT) (P) ASSY (PINK)		8	4-283-366-01	SHEET (VOL), ADHESIVE	
1	X-2581-686-1	CASE (FRONT) (L) ASSY (BLUE)		9	X-2581-504-1	CASE (REAR) (B) ASSY (BLACK)	
1	X-2581-687-1	CASE (FRONT) (G) ASSY (GREEN)		9	X-2581-689-1	CASE (REAR) (R) ASSY (RED)	
1	X-2581-688-1	CASE (FRONT) (N) ASSY (GOLD)		9	X-2581-690-1	CASE (REAR) (P) ASSY (PINK)	
2	4-286-701-01	CUSHION (LCD)		9	X-2581-691-1	CASE (REAR) (L) ASSY (BLUE)	
3	4-293-221-01	SPACER (BUTTON E)		9	X-2581-692-1	CASE (REAR) (G) ASSY (GREEN)	
4	4-292-852-01	SPACER (ORNAMENT RING)		9	X-2581-693-1	CASE (REAR) (N) ASSY (GOLD)	
5	4-283-368-01	GUIDE (HOLD)		10	4-195-816-01	SCREW 0+P2 M1.4 NEW TRU-STAR (for BLUE, PINK, GREEN, GOLD)	
6	3-254-136-01	SCREW (B1.4)		10	4-195-816-11	SCREW 0+P2 M1.4 NEW TRU-STAR (for BLACK, RED)	
7	4-283-364-01	BUTTON (VOL) (BLACK)		11	4-299-401-01	SPACER	
7	4-283-364-11	BUTTON (VOL) (RED)					
7	4-283-364-21	BUTTON (VOL) (PINK)					
7	4-283-364-31	BUTTON (VOL) (BLUE)					

4-2. LCD, BATTERY SECTION

- Rear side view

• **About Ref. No. 1000**

Please cut out and use POLYIMIDE SHEET for a specified size when you exchange it for new parts.
 Note: As for this part, the material or thickness might be different compared with before.
 However, there is no obstacle at all.



Ref. No.	Part No.	Description	Remark	Ref. No.	Part No.	Description	Remark
51	4-150-173-01	SHEET (WIRE)		57	9-885-159-63	EMMC BOARD, COMPLETE (16GB)	
52	4-105-860-01	ADHESIVE, SHEET (BATT)				(for SERVICE) (NWZ-E465)	
53	4-283-369-01	SUPPORT (M)		58	4-257-561-01	SHEET (CORAL) ADHESIVE	
54	4-198-386-01	CUSHION (NAND)		59	4-263-096-01	SPACER (NAND)	
55	4-283-367-01	ESCUTCHEON		1000	9-913-402-43	POLYIMIDE SHEET, t=0.075 (for SERVICE)	
56	4-208-971-01	LEAF (CORAL), COPPER		BAT1	X-2546-032-2	SVX BATTERY ASSY	
57	9-885-159-61	EMMC BOARD, COMPLETE (4GB) (for SERVICE)		LCD1	A-1788-689-A	LCD ASSY	
		(NWZ-E463/E463HK/E463K)					
57	9-885-159-62	EMMC BOARD, COMPLETE (8GB) (for SERVICE)					
		(NWZ-E464/E464K)					

4-3. CHASSIS SECTION

- Rear side view

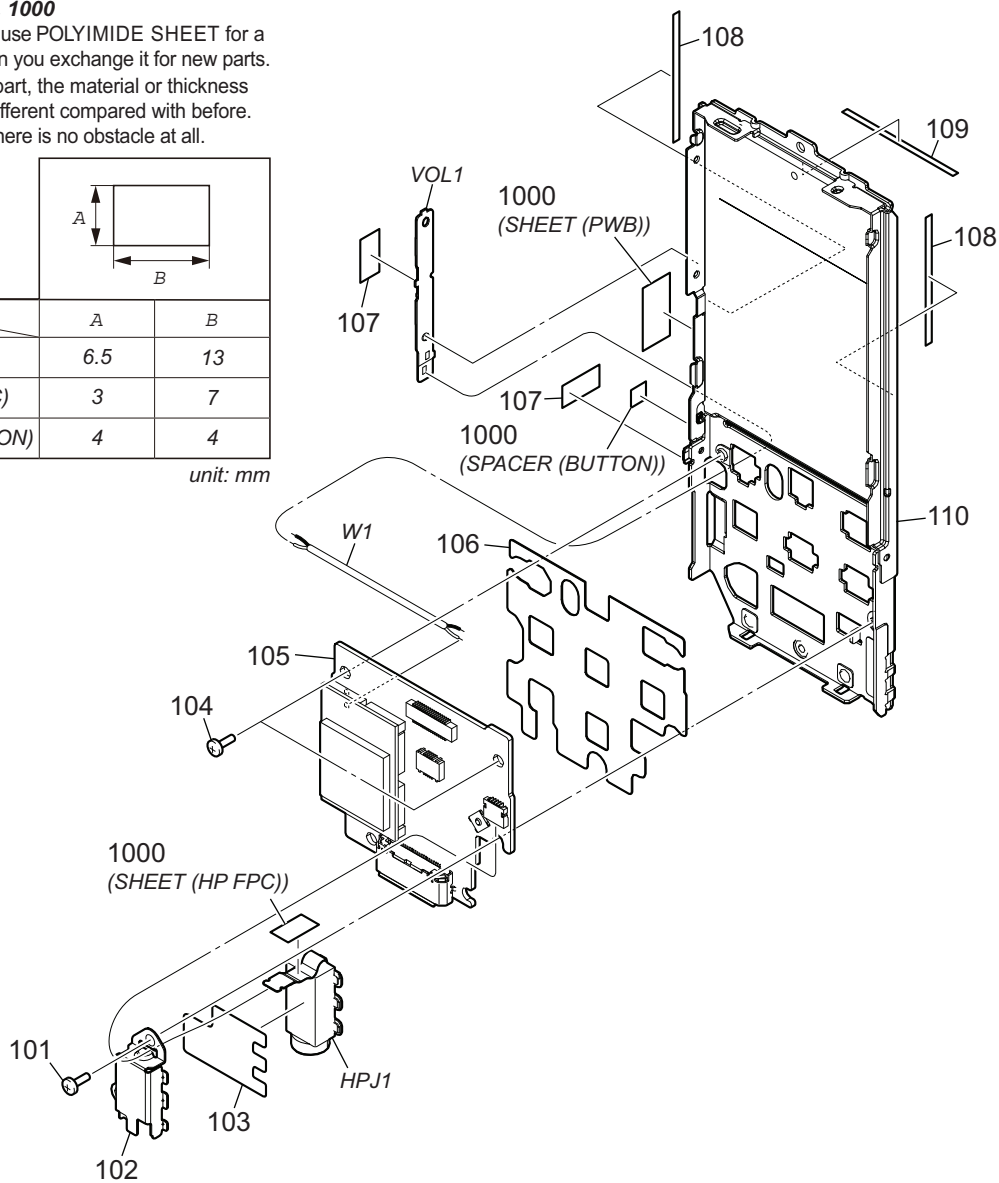
• About Ref. No. 1000

Please cut out and use POLYIMIDE SHEET for a specified size when you exchange it for new parts.

Note: As for this part, the material or thickness might be different compared with before. However, there is no obstacle at all.

	A	B
SHEET (PWB)	6.5	13
SHEET (HP FPC)	3	7
SPACER (BUTTON)	4	4

unit: mm



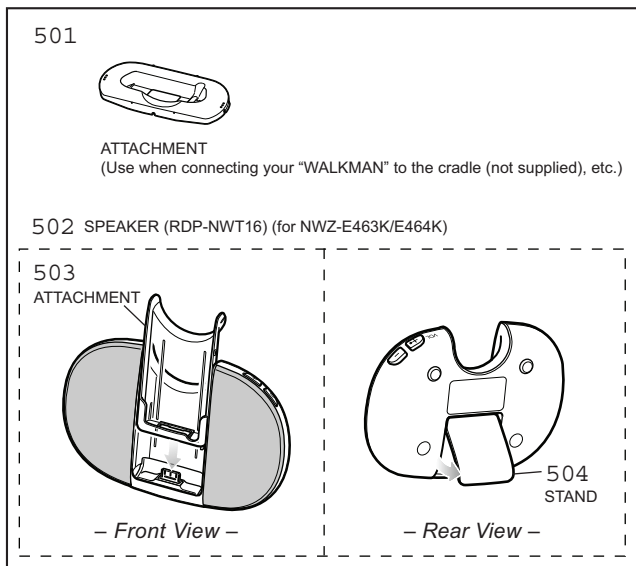
Ref. No.	Part No.	Description	Remark	Ref. No.	Part No.	Description	Remark
101	3-234-449-11	SCREW (M1.4)		108	4-195-814-01	SPACER (LCD)	
102	4-283-371-01	HOLDER (HP)		109	4-195-815-01	SHEET (LCD), ADHESIVE	
103	4-198-036-01	SHEET (HP JACK)		110	X-2581-502-1	CHASSIS ASSY	
104	3-234-449-05	SCREW (M1.4)		1000	9-913-402-43	POLYIMIDE SHEET, t=0.075 (for SERVICE)	
105	9-885-159-64	MOTHER BOARD, COMPLETE (for SERVICE)		HPJ1	A-1784-100-A	3PIN HP JACK ASSY	
106	4-192-485-01	SHEET (MOTHER)		VOL1	A-1828-814-A	VOL KEY ASSY	
107	4-209-153-01	SHEET (CHASSIS)		W1	1-967-951-11	VOL KEY WIRE	

NWZ-E463/E463HK/E463K/E464/E464K/E465

SECTION 5

ACCESSORIES

Ref. No.	Part No.	Description	Remark	Ref. No.	Part No.	Description	Remark
1-542-892-11		HEAD PHONE (MDR-EX083LP/BC9) (Headphones: Black) (for BLACK, RED, GOLD) (EXCEPT NWZ-E463HK)		501	4-288-523-01	ATTACHMENT (ER-O)	
1-542-892-21		HEAD PHONE (MDR-EX083LP/WC9) (Headphones: White) (for BLUE, PINK, GREEN) (EXCEPT NWZ-E463HK)		502	A-1825-725-A	RDP-NWT16 (Speaker) (BLACK) (NWZ-E463K: AEP, UK, MX/E464K)	
1-835-940-31		CORD, PC CONNECTION (USB cable)		502	A-1837-362-A	RDP-NWT16 (Speaker) (PINK) (NWZ-E464K)	
4-286-145-01		EARPAD (1 piece) (Included in MDR-ZX100) (NWZ-E463HK)		502	A-1837-363-A	RDP-NWT16 (Speaker) (BLUE) (NWZ-E464K)	
4-287-611-11		MANUAL, INSTRUCTION (Quick Start Guide) (ENGLISH)		502	A-1845-748-A	RDP-NWT16 (Speaker) (BLACK) (NWZ-E463K: E, JE)	
4-287-611-21		MANUAL, INSTRUCTION (Quick Start Guide) (FRENCH) (CND, AEP, UK)		503	4-283-332-01	ATTACHMENT, E (Attachment for speaker) (SMOKE) (NWZ-E463K/E464K: for BLACK)	
4-287-611-31		MANUAL, INSTRUCTION (Quick Start Guide) (GERMAN) (AEP, UK)		503	4-283-332-11	ATTACHMENT, E (Attachment for speaker) (CLEAR) (NWZ-E464K: for BLUE, PINK)	
4-287-611-41		MANUAL, INSTRUCTION (Quick Start Guide) (SPANISH) (AEP, UK, MX)		504	4-193-600-01	PANEL, STAND (Stand for speaker) (BLACK) (NWZ-E463K/E464K: for BLACK)	
4-287-611-51		MANUAL, INSTRUCTION (Quick Start Guide) (ITALIAN) (AEP, UK)		504	4-193-600-11	PANEL, STAND (Stand for speaker) (WHITE) (NWZ-E464K: for BLUE, PINK)	
4-287-611-61		MANUAL, INSTRUCTION (Quick Start Guide) (RUSSIAN) (EE)					
4-287-611-71		MANUAL, INSTRUCTION (Quick Start Guide) (SIMPLIFIED CHINESE) (E, AUS, CH, JE)					
4-287-611-81		MANUAL, INSTRUCTION (Quick Start Guide) (TRADITIONAL CHINESE) (E, AUS, JE)					
4-287-611-91		MANUAL, INSTRUCTION (Quick Start Guide) (KOREAN) (E, AUS, JE)					
4-287-612-11		MANUAL, INSTRUCTION (Quick Start Guide) (UKRAINIAN) (EE)					
4-287-612-21		MANUAL, INSTRUCTION (Quick Start Guide) (ARABIC) (E, AUS, JE)					
4-287-612-31		MANUAL, INSTRUCTION (Quick Start Guide) (TURKISH) (EE)					
4-287-613-11		MANUAL, INSTRUCTION (for RDP-NWT16) (ENGLISH, FRENCH, GERMAN, SPANISH, ITALIAN) (NWZ-E463K: AEP, UK, MX/E464K)					
4-287-613-21		MANUAL, INSTRUCTION (for RDP-NWT16) (ENGLISH, SIMPLIFIED CHINESE, TRADITIONAL CHINESE, KOREAN, ARABIC) (NWZ-E463K: E, JE)					
8-912-830-90		HEADPHONE (MDR-ZX100) (Headphones) (Including Earpad) (NWZ-E463HK)					



- Abbreviation
- AUS : Australian model
- CH : Chinese model
- CND : Canadian model
- EE : East European model
- JE : Tourist model
- MX : Mexican model

