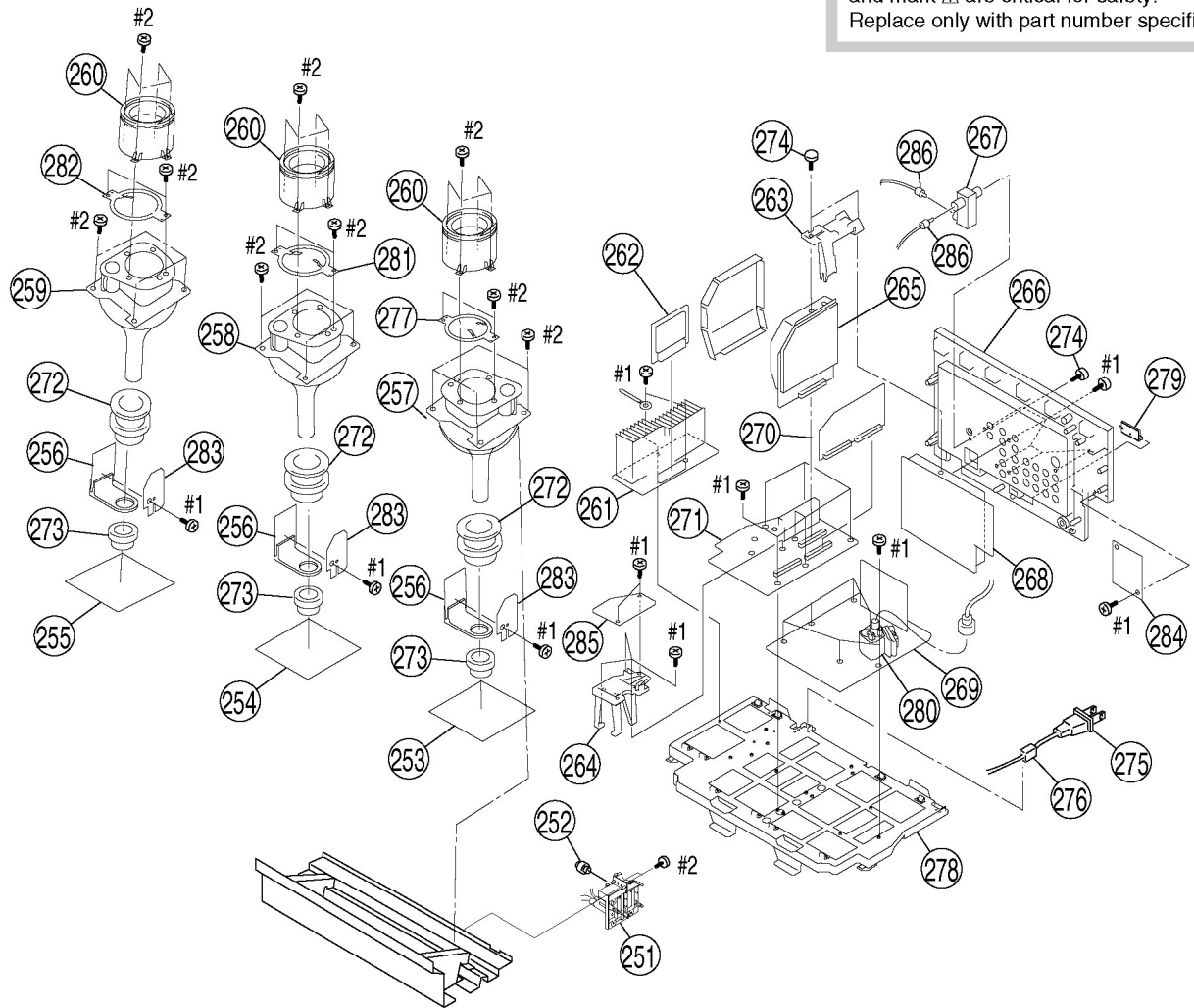


7-6. MAIN BRACKET AND PICTURE TUBE BLOCK

The components identified by shading and mark Δ are critical for safety. Replace only with part number specified.



REF.NO.	PART NO.	DESCRIPTION	REMARK	REF.NO.	PART NO.	DESCRIPTION	REMARK
	251	Δ 8-598-875-00 BLOCK ASSY, HV HVB-1032//C		271	* A-1302-676-A A BOARD, COMPLETE (KP-FX432M91/FX532M91)		
	252	4-373-137-01 CAP (Z), RUBBER			* A-1302-594-A A BOARD, COMPLETE (KP-FX432M31)		
	253	* A-1410-432-A CB BOARD, MOUNT		272	Δ 1-451-537-14 DEFLECTION YOKE		
	254	* A-1410-431-A CG BOARD, MOUNT		273	Δ 1-451-535-13 COIL ASSY, VM		
	255	* A-1410-430-A CR BOARD, MOUNT		274	4-382-854-01 SCREW (M3X8), P, SW (+)		
	256	* A-1410-453-A VM BOARD, MOUNT		275	Δ 1-757-345-11 CORD, POWER (WITH FILTER) (KP-FX432M31)		
	257	Δ A-1604-487-A COUPLER (B) ASSY (KP-FX532M91)			Δ 1-791-439-11 CORD, POWER (KP-FX432M91/FX532M91) (GE/S)		
	258	Δ A-1604-506-A COUPLER (B) ASSY (KP-FX432M31/M91)			Δ 1-792-002-11 CORD, POWER (KP-FX432M91/FX532M91) (E)		
	259	Δ A-1604-483-A COUPLER (G) ASSY		276	4-065-070-01 HOLDER, AC CORD		
	259	Δ A-1604-485-A COUPLER (R) ASSY (KP-FX532M91)		277	4-101-444-02 SHADE (B) (KP-FX532M91)		
	259	Δ A-1604-504-A COUPLER (R) ASSY (KP-FX432M31/M91)			4-101-761-02 SHADE (B) (KP-FX432M31/M91)		
	260	4-083-751-01 LENS (DELTA 250) (KP-FX532M91)		278	* 4-096-045-01 BRACKET, MAIN		
		4-083-752-01 LENS (DELTA 240) (KP-FX432M31/M91)		279	4-097-160-01 CAP, TERMINAL		
	261	* A-1410-439-A DS BOARD, MOUNT		280	Δ 1-453-451-21 FBT ASSY NX6030//M3A4		
	262	* A-1302-631-A AD BOARD, COMPLETE		281	4-101-291-02 SHADE (G)		
	263	* 4-095-013-01 B BRACKET		282	4-096-118-02 SHADE (51-R) (KP-FX532M91)		
	264	* 4-094-855-01 BRACKET G1 (KP-FX432M91/FX532M91)			4-101-762-02 SHADE (R) (KP-FX432M31/M91)		
	265	* A-1302-677-A BM BOARD, COMPLETE		283	* 4-085-133-12 PWB PROTECTION SHEET		
	266	4-096-046-11 BRACKET, TERMINAL		284	* A-1410-442-A T BOARD, MOUNT		
	267	1-251-658-41 SPLITTER RF		285	* A-1410-441-A G1 BOARD, MOUNT (KP-FX432/FX532M91)		
	268	* A-1302-678-A UG BOARD, COMPLETE					
Δ	269	* A-1302-630-A D BOARD, COMPLETE (EXCEPT KP-FX432M91) (S)		Δ 286	* 1-557-456-11 CABLE, PIN		
		* A-1302-887-A D BOARD, COMPLETE (KP-FX432M91) (S)		#1	7-685-648-79 SCREW +BVTP 3X12 TYPE2 TT(B)		
	270	* A-1302-633-A MG BOARD, COMPLETE		Δ #2	7-685-663-79 SCREW +BVTP 4X16 TYPE2 TT(B) (EXCEPT KP-FX432M91) (S)		
					7-685-663-71 SCREW +BVTP 4X16 TYPE2 TT(B) (KP-FX432M91) (S)		