

S/M No. :

Service Manual

Microwave Oven

Model: **KOG-8A275S**

KOG-8A275S39

KOG-8A275S40

✓ Caution

: In this Manual, some parts can be changed for improving, their performance without notice in the parts list. So, if you need the latest parts information, please refer to PPL(Parts Price List) in Service Information Center (<http://svc.dwe.co.kr>).

DAEWOO 
ELECTRONICS

Nov. 2009

PRECAUTIONS TO BE OBSERVED BEFORE AND DURING SERVICING TO AVOID POSSIBLE EXPOSURE TO EXCESSIVE MICROWAVE ENERGY

- (a) Do not operate or allow the oven to be operated with the door open.
- (b) Make the following safety checks on all ovens to be serviced before activating the magnetron or other microwave source, and make repairs as necessary: (1) Interlock operation, (2) Proper door closing, (3) Seal and sealing surfaces (arcing, wear, and other damage), (4) Damage to or loosening of hinges and latches, (5) Evidence of dropping or abuse.
- (c) Before turning on power to the microwave oven for any service test or inspection within the microwave generating compartments, check the magnetron, wave guide or transmission line, and cavity for proper alignment, integrity, and connections.
- (d) Any defective or misadjusted components in the interlock, monitor, door seal, and microwave generation and transmission systems shall be repaired, replaced, or adjusted by procedures described in this manual before the oven is released to the owner.
- (e) A microwave leakage check to verify compliance with the Federal performance standard should be performed on each oven prior to release to the owner.

TABLE OF CONTENTS

PRECAUTIONS TO BE OBSERVED BEFORE AND DURING SERVICING TO AVOID POSSIBLE EXPOSURE TO EXCESSIVE MICROWAVE ENERGY	1
SAFETY AND PRECAUTIONS	2
1. FOR SAFE OPERATION	2
2. FOR SAFE SERVICE PROCEDURES	2
SPECIFICATIONS	3
EXTERNAL VIEW	4
1. OUTER DIMENSION.....	4
2. FEATURES DIAGRAM.....	5
INSTALLATION	6
OPERATIONS AND FUNCTIONS	7
DISASSEMBLY AND ASSEMBLY	8
INTERLOCK MECHANISM AND ADJUSTMENT	17
TROUBLESHOOTING GUIDE	18
MEASUREMENT AND TEST	20
1. MEASUREMENT OF THE MICROWAVE POWER OUTPUT	20
2. MICROWAVE RADIATION TEST	21
3. COMPONENT TEST PROCEDURE	22
WIRING DIAGRAM	23
EXPLODED VIEW AND PARTS LIST.....	24
1. DOOR ASSEMBLY	24
2. CONTROL PANEL ASSEMBLY	24
3. TOTAL ASSEMBLY	24

SAFETY AND PRECAUTIONS

1. FOR SAFE OPERATION

Damage that allows the microwave energy (that cooks or heats the food) to escape will result in poor cooking and may cause serious bodily injury to the operator.

IF ANY OF THE FOLLOWING CONDITIONS EXIST, OPERATOR MUST NOT USE THE APPLIANCE.

(Only a trained service personnel should make repairs.)

- (1) A broken door hinge.
- (2) A broken door viewing screen.
- (3) A broken front panel, oven cavity.
- (4) A loosened door lock.
- (5) A broken door lock.

The door gasket plate and oven cavity surface should be kept clean.

No grease, soil or spatter should be allowed to build up on these surfaces or inside the oven.

DO NOT ATTEMPT TO OPERATE THIS APPLIANCE WITH THE DOOR OPEN.

The microwave oven has concealed switches to make sure the power is turned off when the door is opened.

Do not attempt to defeat them.

DO NOT ATTEMPT TO SERVICE THIS APPLIANCE UNTIL YOU HAVE READ THIS SERVICE MANUAL.

2. FOR SAFE SERVICE PROCEDURES

1. If the oven is operative prior to servicing, a microwave emission check should be performed prior to servicing the oven.
2. If any certified oven unit is found to servicing, a microwave emission check should be performed prior to servicing the oven.
 - (a) inform the manufacturer, importer or assembler,
 - (b) repair the unit at no cost to the owner,
 - (c) attempt to ascertain the cause of the excessive leakage,
 - (d) tell the owner of the unit not to use the unit until the oven has been brought into compliance.
3. If the oven operates with the door open, the service person should tell the user not to operate the oven and contact the manufacturer and the dealer immediately.

IMPORTANT

The wire in this mains lead colored in accordance with the following code.

Green-and-yellow : Earth
Blue : Neutral
Brown : Live

As the colors of the wires in the mains lead of this appliance may not correspond with the colored markings identifying the terminals in your plug, proceed as follows.

The wire which is colored green-and-yellow must be connected to the terminal in the plug which is marked with the letter 'E', earth symbol or colored green-and-yellow.

The wire which is colored blue must be connected to the terminal which is marked with the letter 'N' or colored black.

The wire which is colored brown must be connected to the terminal which is marked with the letter 'L' or colored red.

NOTE :

The oven is designed for counter-top use only.

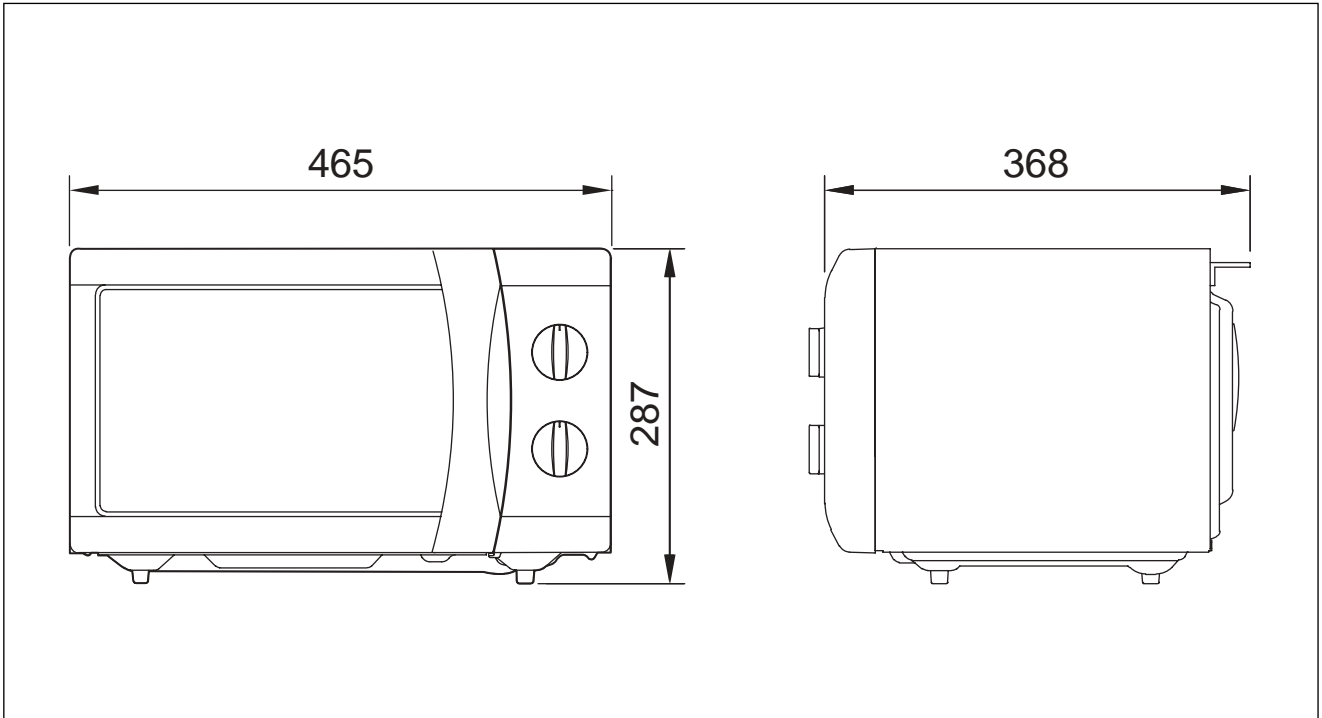
SPECIFICATIONS

POWER SUPPLY		230V AC, 50Hz SINGLE PHASE WITH EARTHING
POWER CONSUMPTION	MICROWAVE	1200 W
	GRILL	1050 W
	COMBINATION	2200 W
MICROWAVE ENERGY OUTPUT		800W
MICROWAVE FREQUENCY		2,450MHz
OUTSIDE DIMENSIONS (WXHxD)		465 x 287 x 368mm
CAVITY DIMENSIONS (WXHxD)		298 x 230 x 330mm
CAVITY VOLUME		23 L
NET WEIGHT		APPROX. 12.7Kg
TIMER		35 min. DUAL SPEED
POWER SELECTIONS		5 Levels

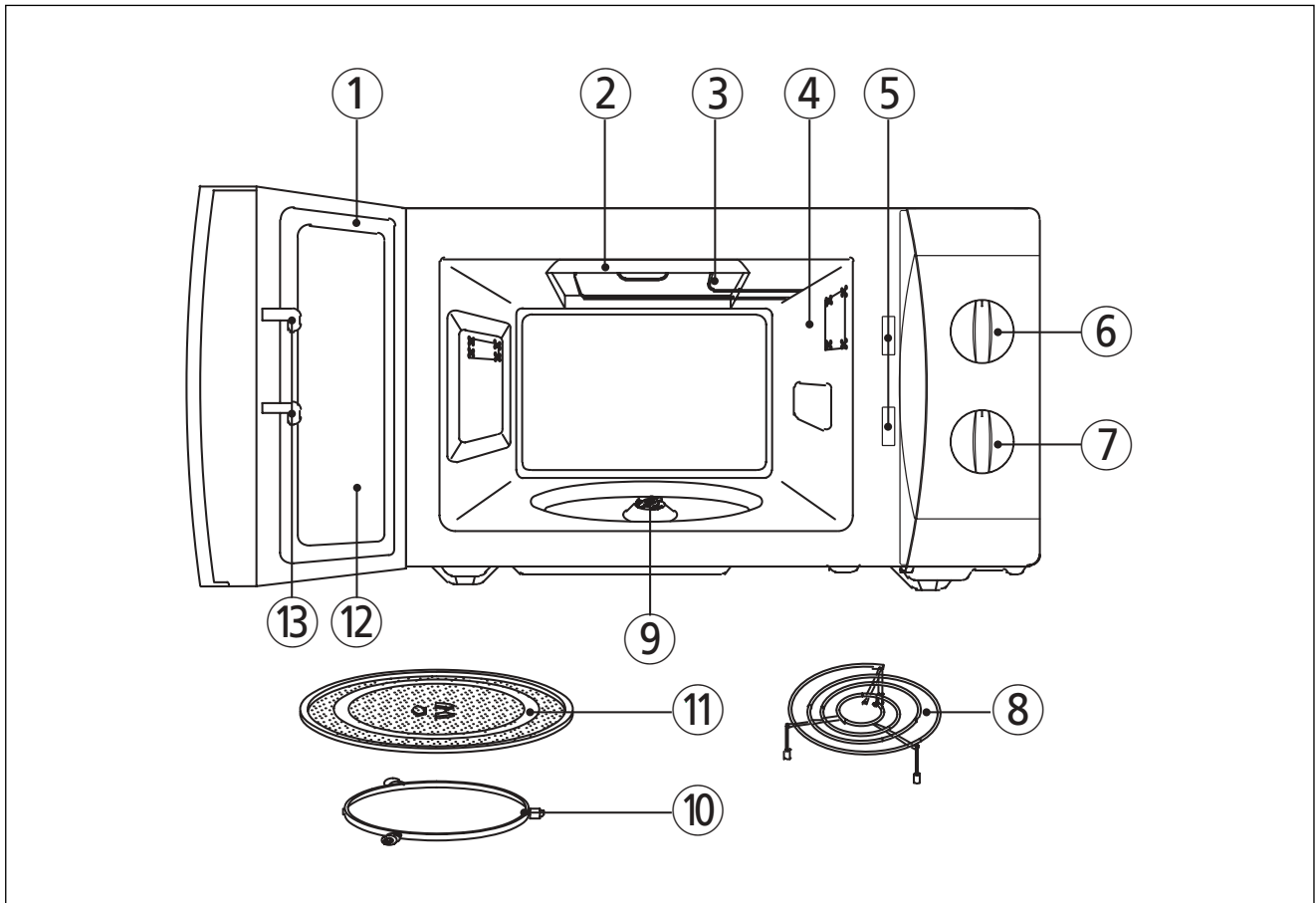
* Specifications are subject to change without notice.

EXTERNAL VIEW

1. OUTER DIMENSION



2. FEATURES DIAGRAM



- ① **Door seal** - Door seal maintains the microwave energy within the oven cavity and prevents microwave leakage.
- ② **Reflector (Insulator Heater)**
- ③ **Heating Element**
- ④ **Oven cavity**
- ⑤ **Safety interlock system**
- ⑥ **Knob V.P.C** - Used to select a microwave power level.
- ⑦ **Knob timer** - Used in setting cooking time for all functions.
- ⑧ **Metal rack**
- ⑨ **Coupler** - This fits over the shaft in the centre of the ovens cavity floor. This is to remain in the oven for all cooking.
- ⑩ **Roller guide** - This must always be used for cooking together with the glass cooking tray.
- ⑪ **Glass cooking tray** - Made of special heat resistant glass. Food in a proper receptacle is placed on this tray for cooking.
- ⑫ **Door viewing screen** - Allows viewing of food. The screen is designed so that light can pass through, but not the microwave.
- ⑬ **Door hook** - When the door is closed, it will automatically shut off. If the door is opened while the oven is operating, the magnetron will immediately stop operating.

INSTALLATION

1. Steady, flat location

This microwave oven should be set on a steady, flat surface.

2. Leave space behind and side

All air vents should be kept a clearance. If all vents are covered during operation, the oven may overheat and, eventually, cause failure.

3. Away from radio, and TV sets

Poor television reception and radio interference may result if the oven is located close to a TV, radio, antenna, or feeder and so on. Position the oven as far from them as possible.

4. Away from heating appliances and water taps

Keep the oven away from hot air, steam and splash when choosing a place to position it, or the insulation might be adversely affected and breakdowns occur.

5. Power supply

- Check your local power source.

This microwave oven requires a current of approximately 10 amperes, 230 Volts, 50 Hz.

- Power supply cord is about 0.8 meters long.
- Used the voltage must be the same as specified on this oven. Using a higher voltage may result in a fire or other accident causing oven damage. Using low voltage will cause slow cooking. We are not responsible for damage resulting from use of this oven with a voltage of ampere fuse other than those specified.
- This appliance is supplied with cable of special type, which, if damaged, must be repaired with cable of same type. Such a cable can be purchased from DAEWOO and must be installed by a qualified person.

6. Examine the oven after unpacking for any damage such as:

A misaligned door, broken door or a dent in cavity.

If any of the above are visible, DO NOT INSTALL, and notify dealer immediately.

7. Do not operate the oven if it is colder than room temperature

(This may occur during delivery in cold weather.) Allow the oven to become room temperature before operating.

EARTHING INSTRUCTIONS

This appliance must be earthed. In the event of an electrical short circuit, earthing reduces the risk of the electric shock by providing an escape wire for the electric current. This appliance is equipped with a cord having a earthing plug. The plug must be plugged into an outlet that is properly installed and earthed.






WARNING

Improper use of the earthing plug can result in a risk of electric shock. Consult a qualified electrician or service-man if the earthing instructions are not completely understood, or if doubt exists as to whether the appliance is properly earthed, and either : If it is necessary to use an extension cord, use only a 3-wire extension cord that has a 3-blade earthing plug, and a 3-slot receptacle that will accept the plug on the appliance. The marked rating of the extension cord should be equal to or greater than the electrical rating of the appliance, or DO NOT USE an extension cord.

OPERATION AND FUNCTIONS

This section includes useful information about oven operation.

1. Connect the mains lead to an electrical outlet.
2. After placing the food in a suitable container, open the oven door and put it on the glass tray.
The glass tray and roller guide must always be in place during cooking.
3. Close the door. Make sure that it is firmly closed.
When the oven door is opened, the light turns off.
The oven door can be opened at any time during operation by pulling the door. The oven will automatically shut off.
4. Set the variable power control to the desired power level.

SYMBOL	POWER LEVEL	OUTPUT POWER
	Heat	208W
	Defrost	352W
	Medium	550W
	Medium high	660W
	High	800W

* The above % can be changed within $\pm 6\%$.

To set GRILL Cooking

- Set the POWER SELECTOR to the  (grill) position.

To set COMBI Cooking

- Set the POWER SELECTOR to the  (combi) position.

5. Set the operating time by turning the timer control to the desired cook time and the microwave cooking starts.
 - If setting the timer control for less than 2 minutes, turn it past 2 minutes and then back to the desired time.
6. Microwave energy will be turned off automatically when the timer reaches "OFF". Then food can be taken out of the oven.
 - To prevent the oven from operating with the door open, your microwave oven is fitted with safety door interlock switches.
 - If you wish to inspect the food while it is cooking simply open the door. The oven will automatically stop cooking. To continue cooking, you simply close the door.
 - If you wish to stop cooking, simply turn the timer knob to the "OFF" position. Cooking can be reset at any time during the cooking cycle by turning the timer control.
 - Do not let the timer continue to operate after removing or when there is no food.
7. **NOTE** : When using the GRILL or COMBI mode;
 - Do not open the door so often, the temperature inside the oven decrease and the cooking may not be completed in setting time.
 - Never touch the oven window and metal interior of the oven when taking food in and out, because the temperature inside the oven and door is very high.
 - When using these modes, be careful as the tray will be hot to touch, use oven gloves or pot holders while handling tray.

DISASSEMBLY AND ASSEMBLY

Cautions to be observed when troubleshooting.

Unlike many other appliances, the microwave oven is high-voltage, high-current equipment.

It is completely safe during normal operation.

However, carelessness in servicing the oven can result in an electric shock or possible danger from a short circuit.

You are asked to observe the following precautions carefully.

1. Always remove the power plug from the outlet before servicing.
2. Use an insulated screwdriver and wear rubber gloves when servicing the high voltage side.
3. Discharge the high voltage capacitor before touching any oven components or wiring.

(1) Check the grounding.

Do not operate on a two-wire extension cord.

The microwave oven is designed to be used while earthed.

It is imperative, therefore, to make sure it is earthed

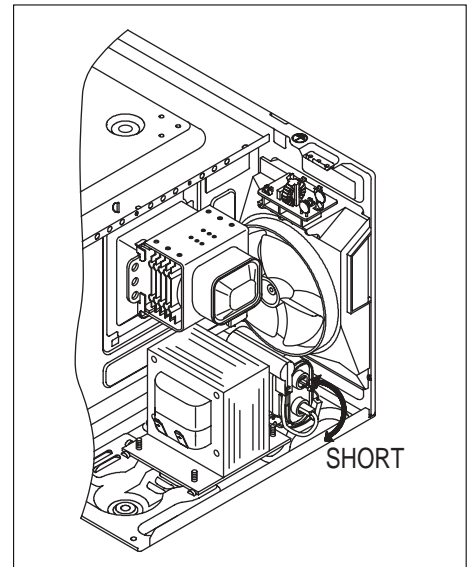
properly before beginning repair work.

(2) Warning about the electric charge in the high voltage capacitor.

For about 30 seconds after the operation stopped and electric charge remains in the high voltage capacitor.

When replacing or checking parts, short between oven chassis and the negative high terminal of the high voltage capacitor by using a properly insulated screwdriver to discharge.

4. When the 15A fuse is blown out due to the operation of the monitor switch; replace primary interlock switch, secondary interlock switch and interlock monitor switch.
5. After repair or replacement of parts, make sure that the screws are properly tightened, and all electrical connections are tightened.
6. Do not operate without cabinet.

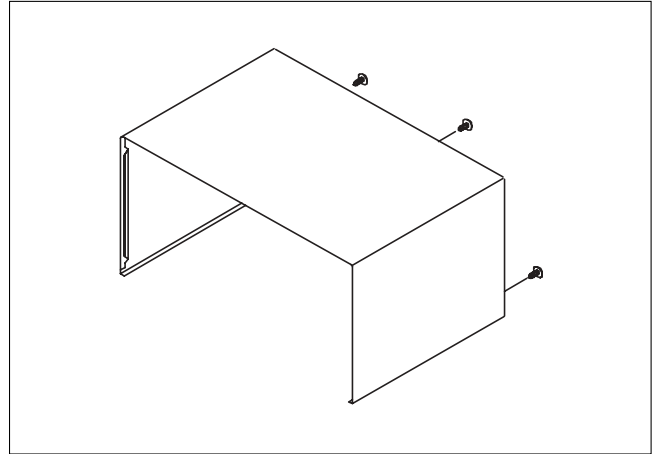


CAUTION : Service personnel should remove their watches whenever working close to or replacing the magnetron.

WARNING : When servicing the appliance, need a care of touching or replacing high potential parts because of electrical shock or exposing microwave. These parts are as follows - HV Transformer, Magnetron, HV Capacitor, HV Diode, HV fuse.

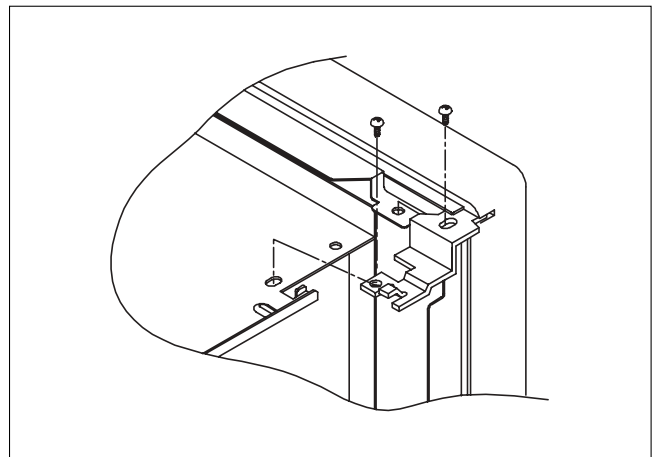
1. To remove cabinet

- 1) Remove three screws on cabinet back.
- 2) Pull the cabinet backward.



2. To remove door assembly

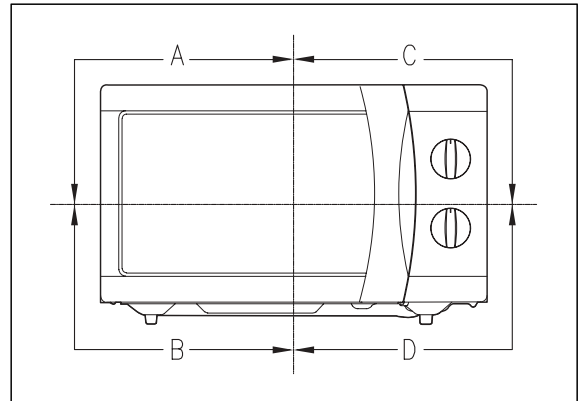
- 1) Remove two screws which secure the stopper hinge top.
- 2) Remove the door assembly from top plate of cavity.
- 3) Reverse the above for reassembly.



NOTE : After replacing the door assembly, perform a check of correct alignment with the hinge and cavity front plate.

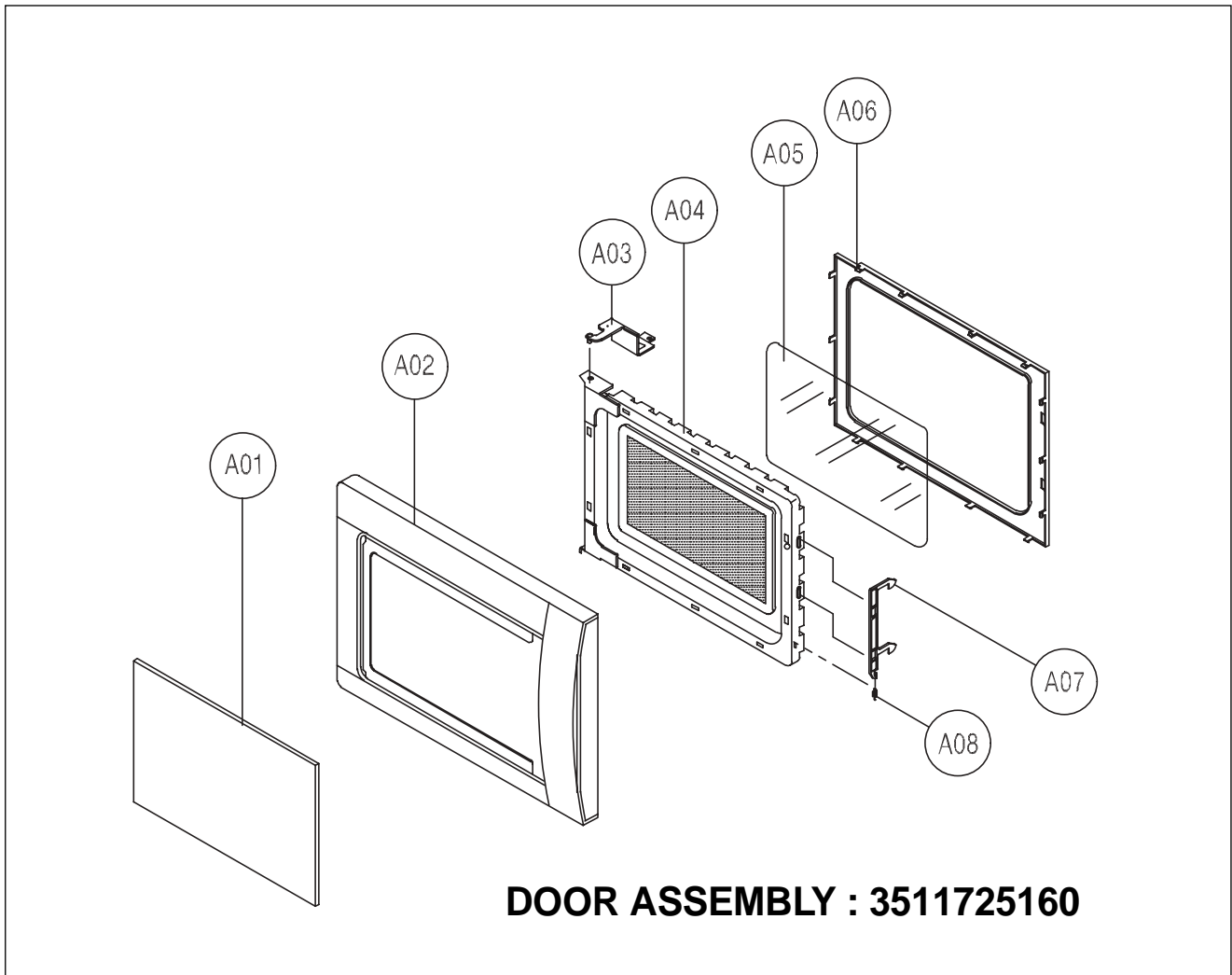
3. Method to reduce the gap between the door seal and the oven front surface.

- (1) To reduce gap located on part 'A'
 - Loosen two screws on the stopper hinge top, and then push the door to contact the door seal to the oven front surface.
 - Tighten two screws.
- (2) To reduce gap located on part 'B'
 - Loosen two screws on the stopper hinge under, and then push the door to contact the door seal to the oven front surface.
 - Tighten two screws.
- (3) To reduce gap located on part 'C'
 - Loosen the screw on the interlock switch assembly located the top of the oven body.
 - Draw the interlock switch assembly inward as possible to engage with the hook on the door bottom.
 - Tighten a screw.
- (4) To reduce gap located on part 'D'
 - Loosen the screw on the interlock switch assembly located the bottom of the oven body.



NOTE : A small gap may be acceptable if the microwave leakage does not exceed 4mW/cm².

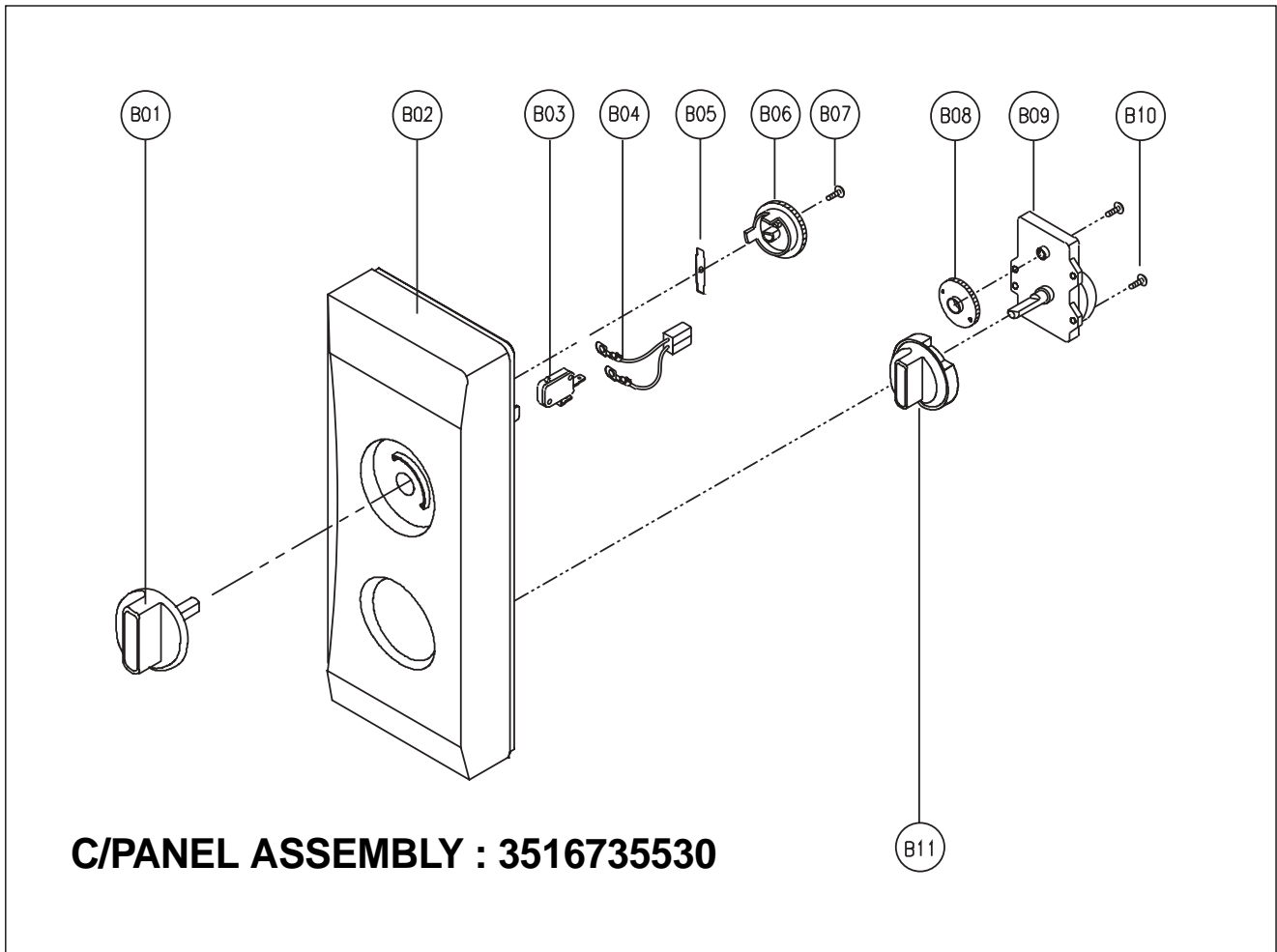
4. To remove door parts.



REF. NO	PART CODE	PART NAME	DESCRIPTION	Q'TY	REMARK
A01	3517009830	BARRIER-SCREEN *O	SAN 1.5T	1	
A02	3512210230	FRAME DOOR	HIPS SG-970, HG-1760H	1	
A03	3515204100	STOPPER HINGE *T	AS KOR-63150S	1	
A04	3511719500	DOOR PAINTING AS	KOR-6C0B5S	1	
A05	3517002800	BARRIER-SCREEN *I	POLYESTER T0.1	1	
A06	3512300210	GASKET DOOR	PP	1	
A07	3513100750	HOOK	POM	1	
A08	3515102000	SPRING HOOK	PW1	1	

- (1) Remove the gasket door from the door painting as.
- (2) Remove the barrier screen inner from the door painting as.
- (3) Remove the door frame from the door painting as.
- (4) Remove the stopper hinge top from the door painting as.
- (5) Remove the spring and the hook.
- (6) Remove the barrier screen outer from the door frame.
- (7) Reverse the above steps for reassembly.

5. To remove control panel parts.

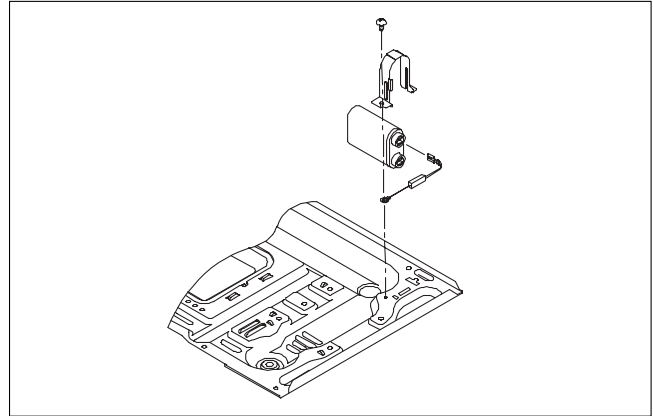


REF. NO	PART CODE	PART NAME	DESCRIPTION	Q'TY	REMARK
B01	3513411220	KNOB VPC	ABS SG-0760D SG-175	1	
B02	3516735440	CONTROL-PANEL	HIPS SG-970,HG-1760H	1	
B03	4415A17352	SW MICRO	VP-533A-OF SPNO #187 200G	1	
B04	3512766301	HARNESS TIMER	KOG-37150S	1	
B05	3515101600	SPRING FLAT	SUS 301 T0.5	1	
B06	3517403110	COUPLER VPC KNOB	POM 83MM 7 SPELEMECH	1	
B07	7122401211	SCREW TAPPING	T2S TRS 4*12 MFZN	1	
B08	3517400400	COUPLER TIMER	POM	1	
B09	3518205500	TIMER	NT35MKD27E-P BROWNER ONLY	1	
B10	7122401211	SCREW TAPPING	T2S TRS 4*12 MFZN	2	
B11	3513411120	KNOB	ABS SG-0760D SG-175	1	

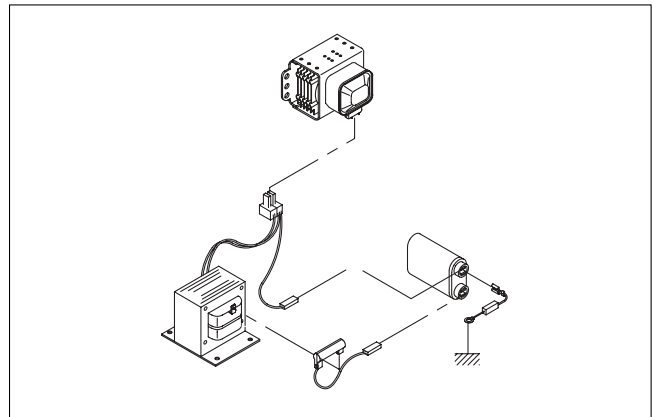
- (1) Remove the screw which secure the control panel, push up two snap fits and draw forward the control panel assembly.
- (2) Remove two screws which secure the timer assembly.
- (3) Remove the timer assembly.
- (4) Pull out the timer knob from the timer.
- (5) Remove the screw which secure the coupler.
- (6) Pull out the coupler, V.P.C knob and flat spring from the control panel.
- (7) Reverse the above steps for reassembly.

6. To remove high voltage capacitor.

- 1) Remove the screw which secure the grounding ring terminal of the H.V. diode and the capacitor holder.
- 2) Remove the H.V. diode from the capacitor holder.
- 3) Reverse the above steps for reassembly.

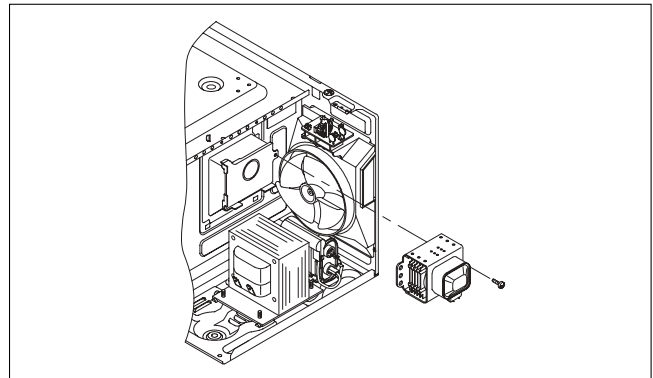


◆ High voltage circuit wiring

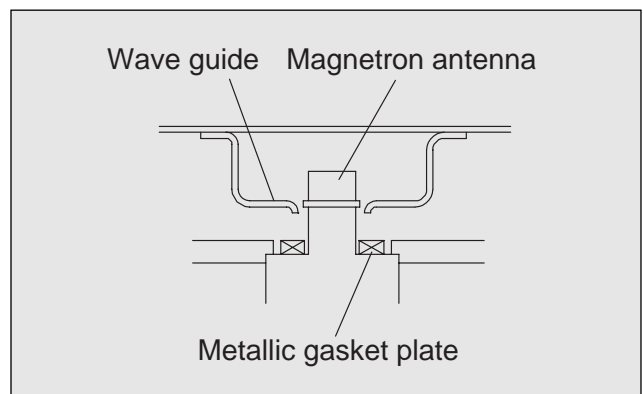
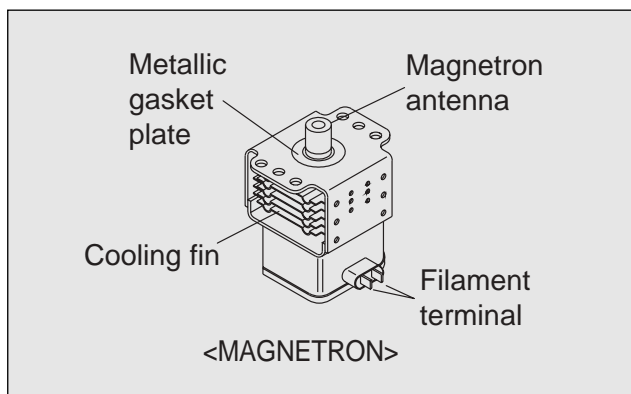


7. To remove magnetron.

- 1) Remove the screw which secure the magnetron.
- 2) Remove the magnetron.
- 3) Reverse the above steps for reassembly.

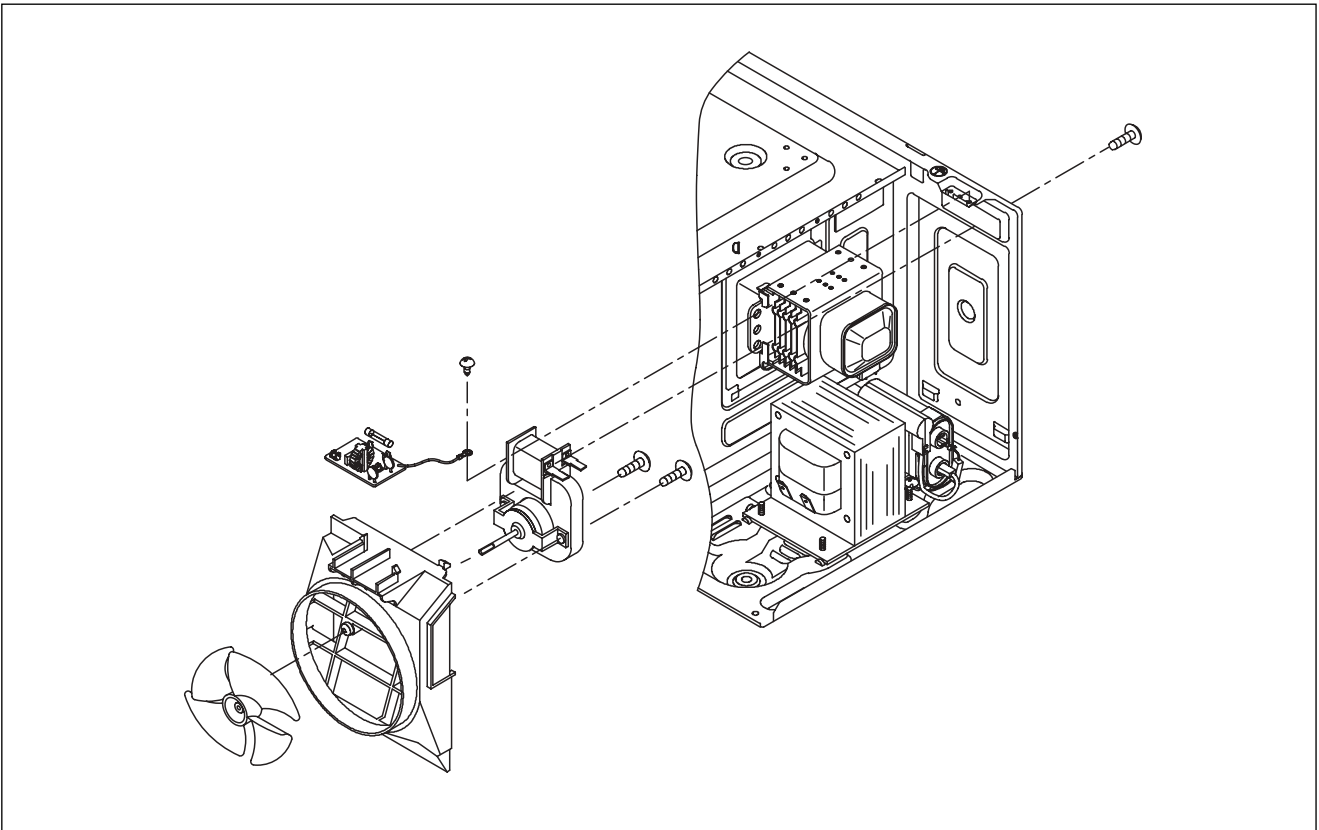


NOTE : Never install the magnetron without the metallic gasket plate which is packed with each magnetron to prevent microwave leakage. Whenever repair work is carried out on magnetron, check the microwave leakage. It shall not exceed $4\text{mW}/\text{cm}^2$ for a fully assembled oven with door normally closed.



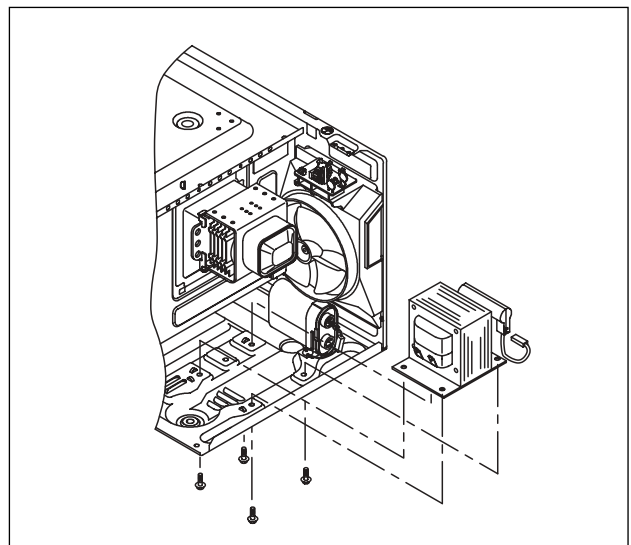
8. To remove wind guide assembly.

- 1) Remove the screw for earthing.
- 2) Remove the noise filter from the wind guide.
- 3) Remove the screw which secure the wind guide assembly.
- 4) Draw forward the wind guide assembly.
- 5) Pull the fan from the motor shaft.
- 6) Remove two screws which secure the motor shaded pole.
- 7) Remove the motor shaded pole.
- 8) Reverse the above steps for reassembly.



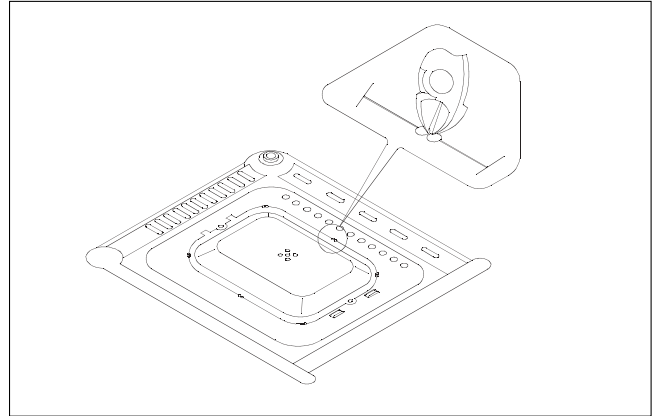
9. To remove H.V.transformer.

- 1) Remove four screws holding the H.V.transformer.
- 2) Remove the H.V.transformer.
- 3) Reverse the above steps for reassembly.

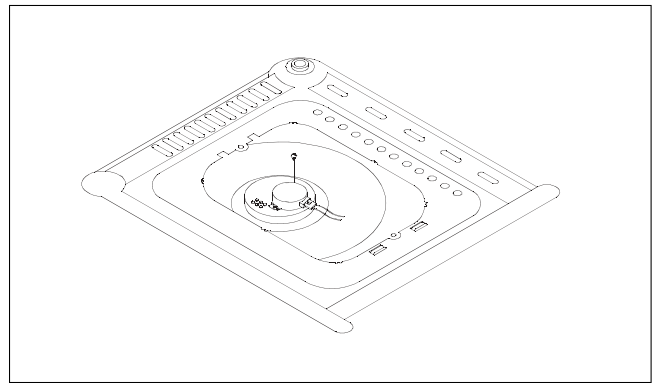


10. To remove tray motor.

- 1) Remove the coupler in the cavity.
- 2) Turn the set upside down.
- 3) Cut the tray motor cover part from the base plate.
- 4) Remove the tray motor cover.

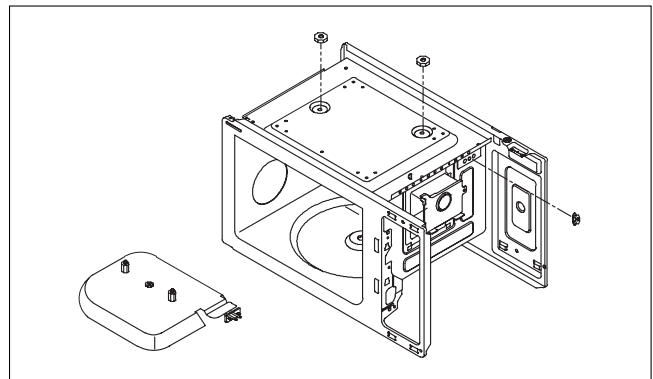


- 5) Remove a screw which secure the tray motor.
- 6) Remove the tray motor.
- 7) Reverse the above steps for reassembly except for securing the tray motor cover with screw.

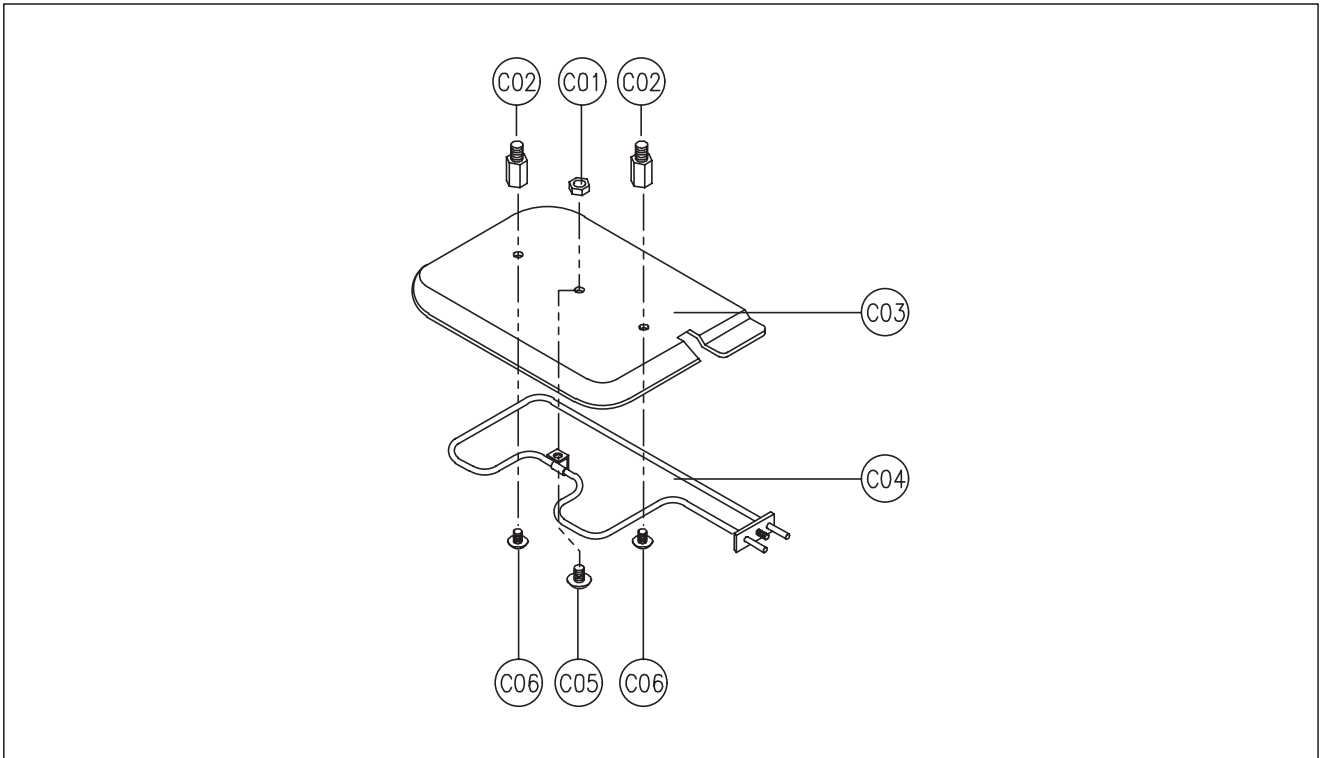


11. To remove heater assembly.

- 1) Remove the three nuts.
- 2) Remove the insulator heater assembly.
- 3) Reverse the above steps for reassembly.



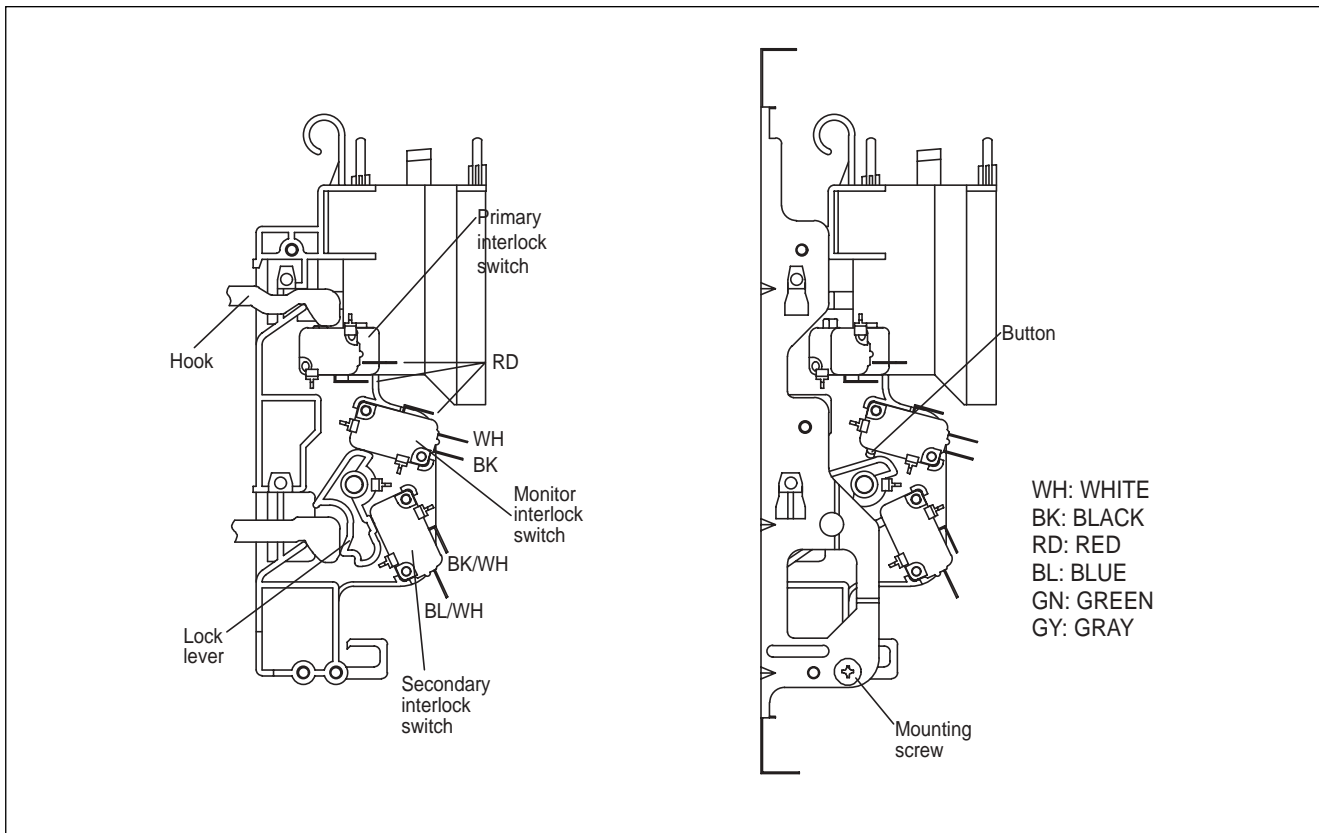
12. To remove heater parts.



REF. NO	PART CODE	PART NAME	DESCRIPTION	Q'TY	REMARK
C01	7392500013	NUT HEX	6N-2-5 MFCR	1	
C02	3515001200	SPACER INSULATOR *1	C3771BD A=24.2	2	
C03	3513301100	INSULATOR HEATER	SPP T0.8	1	
C04	3512803410	HEATER	230V 1000W 1SOPE47501	1	
C05	7002500613	SCREW MACHINE	TRS 5X6 MFCR	1	
C06	7002400814	SCREW MACHINE	TRS 4X8 MFCR	2	

INTERLOCK MECHANISM AND ADJUSTMENT

The door lock mechanism is a device which has been specially designed to completely eliminate microwave radiation when the door is opened during operation, and thus to perfectly prevent the danger resulting from the leakage of microwave.



(1) Primary interlock switch

When the door is closed, the hook locks the oven door. If the door is not closed properly, the oven will not operate.

When the door is closed, the hook pushes the button of the microswitch. Then the button of the primary interlock switch bring it under "ON" condition.

(2) Secondary interlock switch and interlock monitor switch

When the door is closed, the hook pushes the lock lever downward. The lock lever presses the button of the interlock

monitor switch to bring it under "OFF" condition and presses the button of the secondary interlock switch to bring it under "ON" condition.

ADJUSTMENT :

Interlock monitor switch

When the door is closed, the interlock monitor switch should be "OFF" condition before other switches are closed.

When the door is opened, the interlock monitor switch should be "ON" condition after other switches are opened.

(3) Adjustment steps

a) Loosen the mounting screw.

b) Adjust interlock switch assembly position.

Actuation distance of primary and secondary interlock switch shall be adjusted almost 0.7mm.

c) Make sure that lock lever moves smoothly after adjustment is completed.

d) Tighten completely a mounting screw.

NOTE :

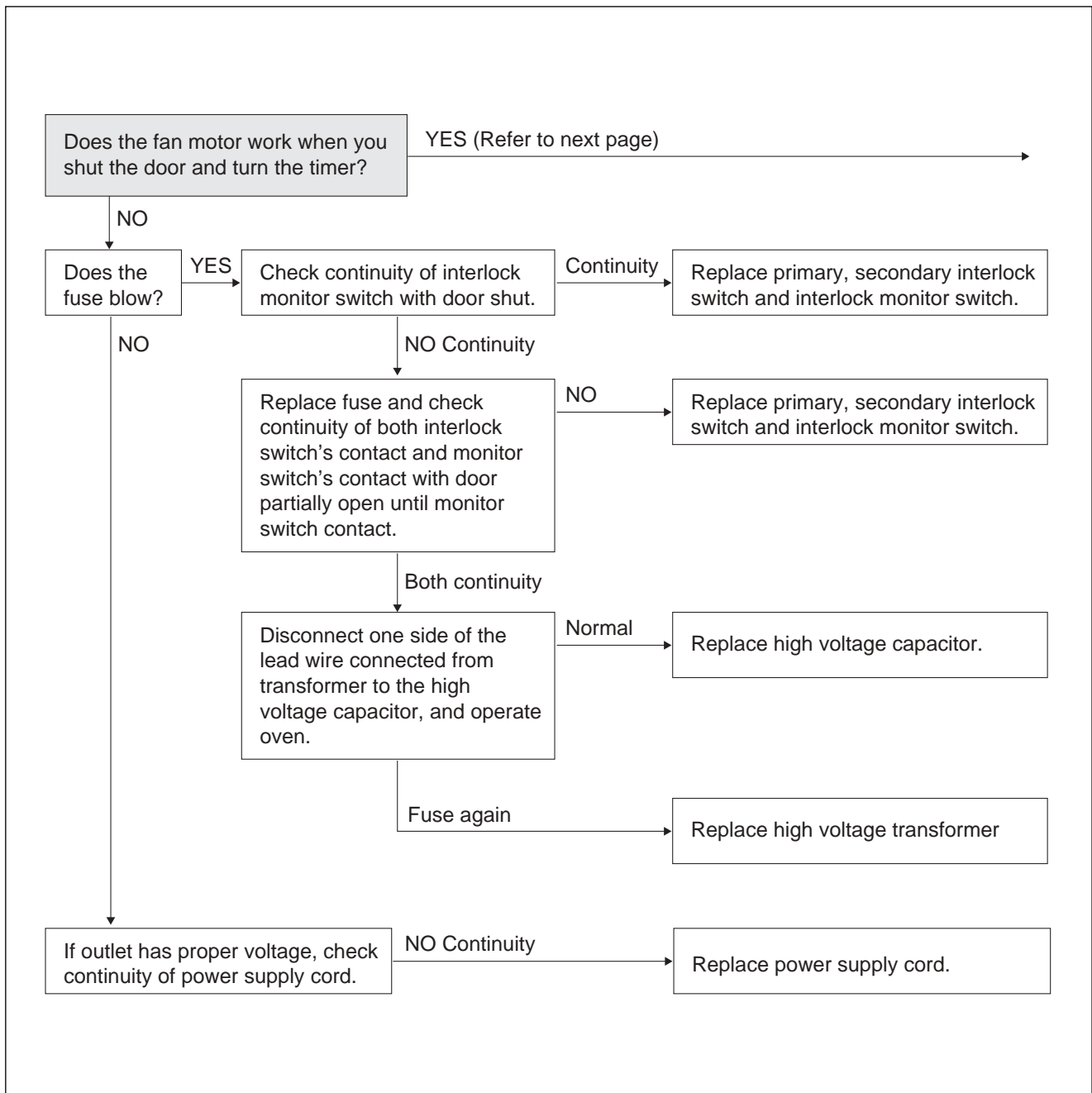
Microwave emission test should be performed after adjusting interlock mechanism. If the microwave emission exceed 4mW/cm^2 , readjust interlock mechanism.

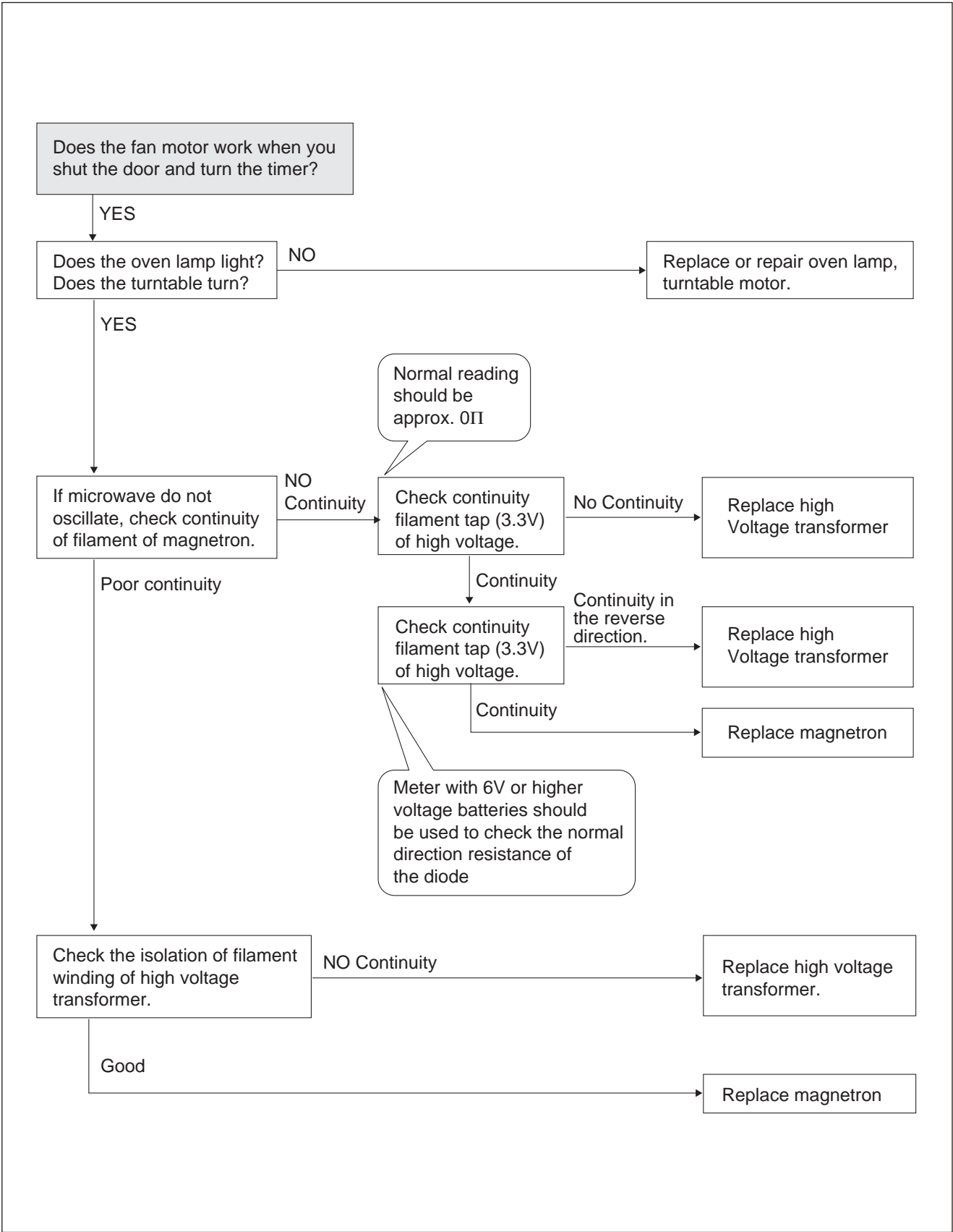
TROUBLESHOOTING GUIDE

Following the procedure below to check if the oven is defective or not.

1. Check grounding before trouble checking.
2. Be careful of the high voltage circuit.
3. Discharge the high voltage capacitor.
4. When checking the continuity of the switches, fuse or high voltage transformer, disconnect one lead wire from these parts and check continuity with the AC plug removed. To do otherwise may result in a false reading or damage to your meter.

(TROUBLE 1) Oven does not operate at all ; any inputs can not be accepted.





MEASUREMENT AND TEST

1. MEASUREMENT OF THE MICROWAVE POWER OUTPUT

Microwave output power can be checked by indirectly measuring the temperature rise of a certain amount of water exposed to the microwave as directed below.

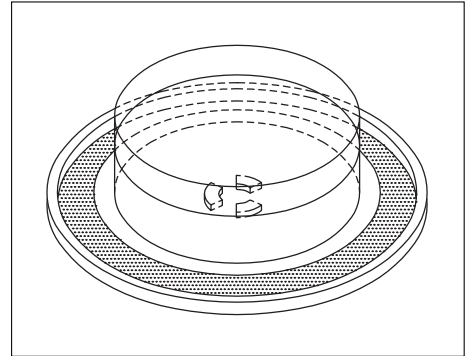
PROCEDURE

1. Microwave power output measurement is made with the microwave oven supplied at rated voltage and operated at its maximum microwave power setting with a load of 1000 ± 5 cc of potable water.
2. The water is contained in a cylindrical borosilicate glass vessel having a maximum material thickness of 3 mm and an outside diameter of approximately 190 mm.
3. The oven and the empty vessel are at ambient temperature prior to the start of the test.

The initial temperature of the water is $10 \pm 2^\circ\text{C}$ ($50 \pm 3.6^\circ\text{F}$)

It is measured immediately before the water is added to the vessel.

After addition of the water to the vessel, the load is immediately placed on the center of the shelf, which is in the lowest normal position.



4. Microwave power is switched on.
5. Heating time should be exactly **A** seconds. (Refer to table as following)
Heating time is measured while the microwave generator is operating at full power.
The filament heat-up time for magnetron is not included.
6. The initial and final temperature of water is selected so that the maximum difference between the ambient and final water temperature is 5K.
7. The microwave power output **P** in watts is calculated from the following formula :

$$P = 4187 \times \Delta T / t$$

- ΔT is difference between initial and ending temperature.
- t is the heating time.

The power measured should be **B** (Refer to SPECIFICATIONS) $W \pm 10.0\%$.

CAUTION :

1. Water load should be measured exactly to 1 liter.
2. Input power voltage should be exactly specified voltage (Refer to SPECIFICATIONS).
3. Ambient temperature should be $20 \pm 2^\circ\text{C}$ ($68 \pm 3.6^\circ\text{F}$)

Heating time for power output:

A(second)	70	64	60	56	52	49	47	44	42	40	38
B(W)	600	650	700	750	800	850	900	950	1000	1050	1100

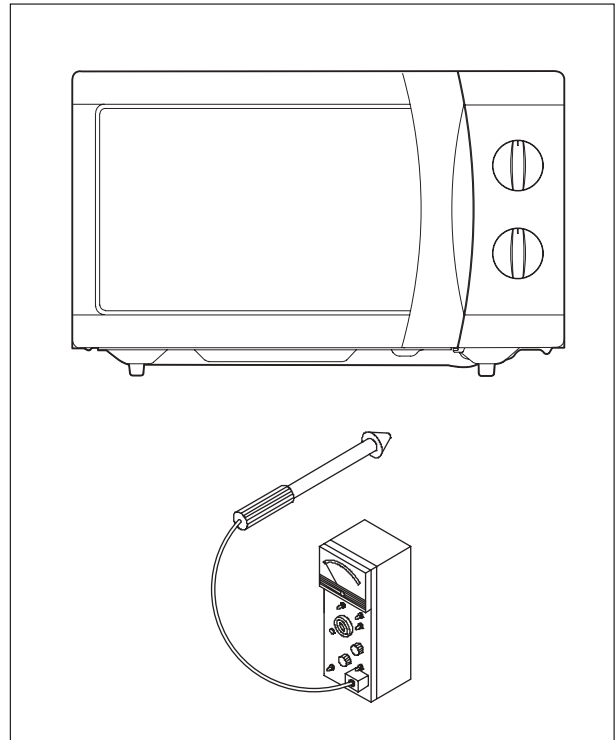
2. MICROWAVE RADIATION TEST

CAUTION :

1. Make sure to check the microwave leakage before and after repair of adjustment.
2. Always start measuring of an unknown field to assure safety for operating personnel from microwave energy.
3. Do not place your hands into any suspected microwave radiation field unless the safe density level is known.
4. Care should be taken not to place the eyes in direct line with the source of microwave energy.
5. Slowly approach the unit under test until the radiometer reads an appreciable microwave leakage from the unit under the test.

PROCEDURES

1. Prepare Microwave Energy Survey Meter, 600cc glass beaker, and glass thermometer $100^{\circ}\text{C}(212^{\circ}\text{F})$.
2. Pour $275\text{cc}\pm 15\text{cc}$ of tap water initially at $20\pm 5^{\circ}\text{C}(68\pm 9^{\circ}\text{F})$ in the 600cc glass beaker with an inside diameter of approx. 95mm(3.5in.).
3. Place it at the center of the tray and set it in a cavity.
4. Close the door and operate the oven.
5. Measure the leakage by using Microwave Energy Survey Meter with dual ranges, set to 2450MHz.
 - 1) Measured radiation leakage must not exceed the value prescribed below. Leakage for a fully assembled oven with door normally closed must be less than $4\text{mW}/\text{cm}^2$.
 - 2) When measuring the leakage, always use the 5cm(2in.) space cone with probe. Hold the probe perpendicular to the cabinet and door. Place the space cone of the probe on the door, cabinet, door seem, door viewing screen, the exhaust air vents and the suction air vents.
 - 3) Measuring should be in a counter-clockwise direction at a rate of 1 in./sec. If the leakage of the cabinet door is unknown, move the probe more slowly.
 - 4) When measuring near a corner of the door, keep the probe perpendicular to the areas making sure the probe end at the base of the cone does not get closer than 2 in. from any metal. If it does not, erroneous reading may result.



3. COMPONENT TEST PROCEDURE

- High voltage is present at the high voltage terminal of the high voltage transformer during any cooking cycle.
- It is neither necessary nor advisable to attempt measurement of the high voltage.
- Before touching any oven components or wiring, always unplug the oven from its power source and discharge the capacitor.

1. High voltage transformer

- (1) Remove connections from the transformer terminals and check continuity.
- (2) Normal readings should be as follows:
 - Secondary windingApprox. $140\Omega \pm 10\%$
 - Filament windingApprox. 0Ω
 - Primary windingApprox. 2Ω

2. High voltage capacitor

- (1) Check continuity of capacitor with meter on the highest OHM scale.
- (2) A normal capacitor will show continuity for a short time, and then indicate $10M\Omega$ once the capacitor is charged.
- (3) A shorted capacitor will show continuous continuity.
- (4) An open capacitor will show constant $10M\Omega$
- (5) Resistance between each terminal and chassis should be infinite.

3. High voltage diode

- (1) Isolate the diode from the circuit by disconnecting the leads.
- (2) With the ohmmeter set on the highest resistance scale measure the resistance across the diode terminals.
 - Reverse the meter leads and again observe the resistance reading.
 - Meter with 6V, 9V or higher voltage batteries should be used to check the front-back resistance of the diode, otherwise an infinite resistance may be read in both directions.
 - A normal diode's resistance will be infinite in one direction and several hundred $K\Omega$ in the other direction.

4. Magnetron

For complete magnetron diagnosis, refer to "Measurement of the Microwave Power Output".

Continuity checks can only indicate an open filament or a shorted magnetron.

To diagnose for an open filament or a shorted magnetron.

- (1) Isolate magnetron from the circuit by disconnecting the leads.
- (2) A continuity check across magnetron filament terminals should indicate 0.1Ω or less.
- (3) A continuity check between each filament terminal and magnetron case should read open.

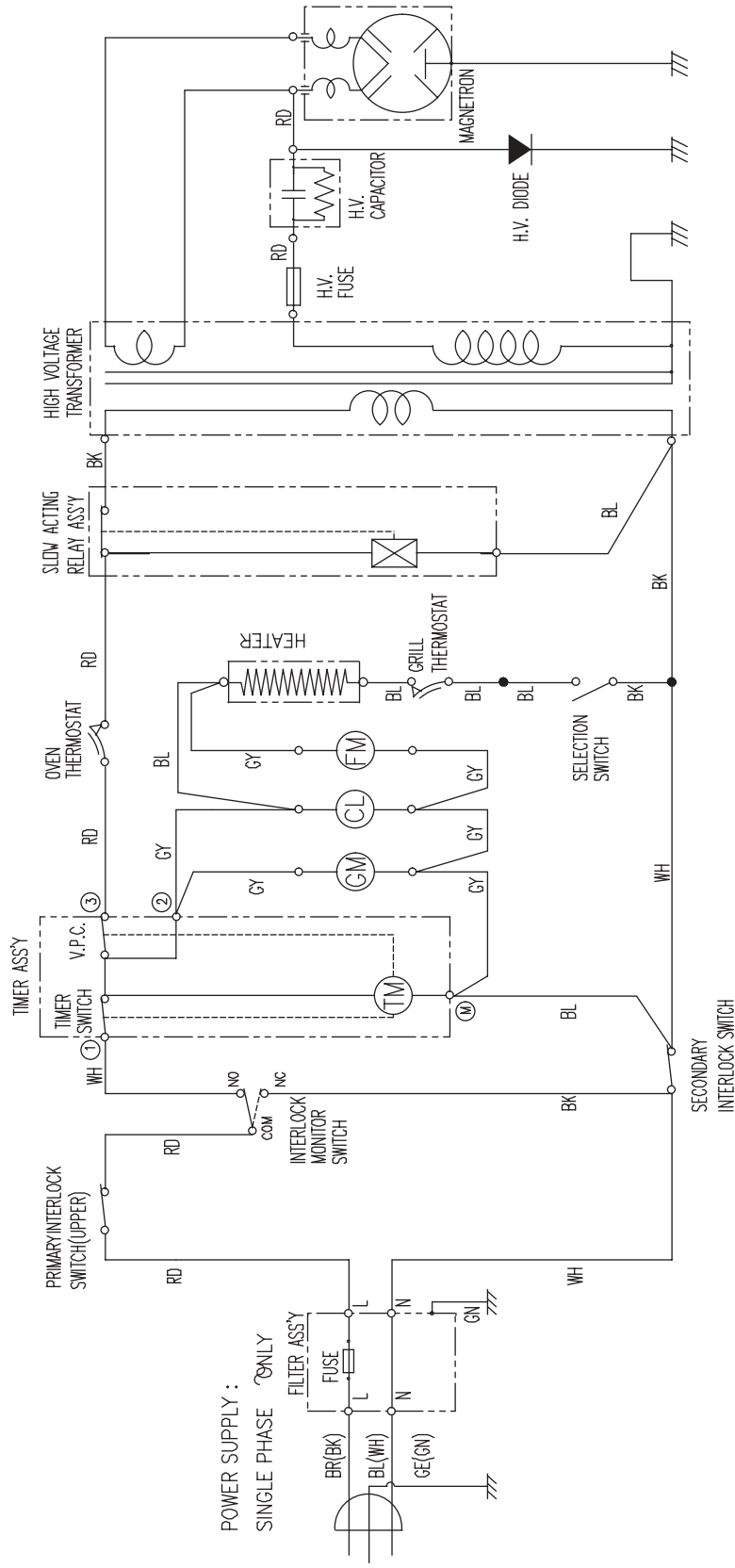
5. Fuse

If the fuse in the primary and monitor switch circuit is blown when the door is opened, check the primary and monitor switch before replacing the blown fuse.

In case the fuse is blown by an improper switch operation, replace the defective switch and fuse at the same time.

Replace just the fuse if the switches operate normally.

WIRING DIAGRAM



POWER SUPPLY :
SINGLE PHASE ONLY
FILTER ASSY
FUSE
BR(BK) BL(WH) GE(GN)

- NOTE : RD : RED
WH : WHITE
BK : BLACK
CN : GREEN
BR : BROWN
- OR : ORANGE
BL : BLUE
GY : GRAY
GE : GREEN/YELLOW
- CL : CAVITY LAMP
FM : FAN(BLOWER) MOTOR
GM : GEARED MOTOR
TM : TIMER MOTOR
V.P.C.: VARIABLE POWER CONTROLLER
- [CONDITION]
SELECTION : MICROWAVE
DOOR : CLOSED
TIMER : ON
V.P.C. : HIGH

EXPLODED VIEW AND PARTS LIST

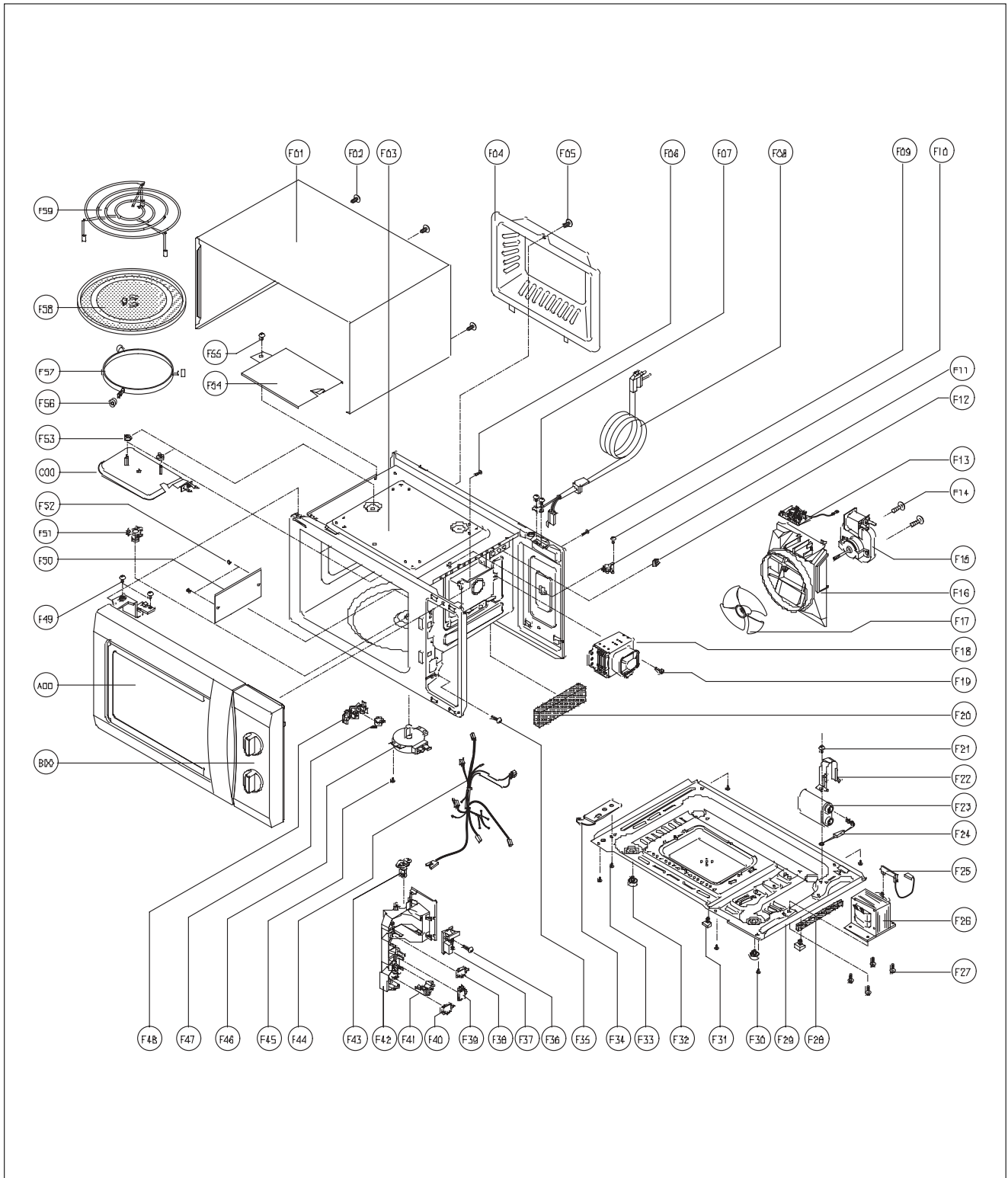
1. DOOR ASSEMBLY

Refer to Disassembly and assembly

2. CONTROL PANEL ASSEMBLY

Refer to Disassembly and assembly

3. TOTAL ASSEMBLY



✓ **Caution** : In this Manual, some parts can be changed for improving, their performance without notice in the parts list. So, if you need the latest parts information, please refer to PPL(Parts Price List) in Service Information Center (<http://svc.dwe.co.kr>).

NO	PART CODE	PART NAME	DESCRIPTION	Q'TY
A00	3511725160	DOOR AS	KOR-8A2B5S	1
B00	3516735530	CONTROL-PANEL AS	KOG-8A275S	1
C00	3513302720	INSULATOR HEATER AS	KOG-8A0R5S	1
F01	3510805300	CABINET AS	KOR-61150S	1
F02	7112401011	SCREW TAPPING	T1 TRS 4*10 MFZN	3
F03	3516109980	CAVITY AS	KOG-8A0R5S (KOG-8A275S,39)	1
	3516207430		KOG-8A0R5S40(KOG-8A275S40)	1
F04	3511413700	COVER REAR	SBHG T0.4	1
F05	7112401011	SCREW TAPPING	T1 TRS 4*10 MFZN	1
F06	7122401211	SCREW TAPPING	T2S TRS 4X12 MFZN	1
F07	7112401011	SCREW TAPPING	T1 TRS 4*10 MFZN	2
F08	35113A5QJ5	CORD POWER AS	3X1.5 80X80 120-RTML	1
F09	7122401211	SCREW TAPPING	T2S TRS 4X12 MFZN	1
F10	7121300611	SCREW TAPPING	T2S PAN 3X6 MFZN	1
F11	3518906700	THERMOSTAT	OFF:80 ON:70 H #187	1
F12	7S627W50X1	NUT HEX	NUT FLANGE M5X0.8P MFZN	1
F13	3518606100	NOISE FILTER	DWLF-M13	1
F14	7121402511	SCREW TAPPING	T2S PAN 4X25 MFZN	2
F15	3963512310	MOTOR SHADED POLE	230V 20W MW10CA-M02	1
F16	3512517000	GUIDE WIND	PP	1
F17	3511800300	FAN	PP+30%GLASS	1
F18	3518003700	MAGNETRON	2M218JFL 6CF	1
F19	3516004000	SPECIAL SCREW	T2 BOLT FLANGE 5X12 DACRO	1
F20	3517317300	FOAM	URETHAN FOAM 15TX150X40	1
F21	7272400811	SCREW TAPTITE	TT3 TRS 4X8 MFZN	1
F22	3513003200	HOLDER HV CAPACITOR	SECC T0.6	1
F23	3518302201	CAPACITOR HV	2100VAC 0.98UF #187 75MM	1
F24	3518400900	DIODE HV AS	HVR-1X-30B #187	1
F25	3518701100	FUSE HV	5KV 0.55A HV-41A55-02	1
F26	3518122310	TRANS HV	R1S58B (LA00)	1
F27	3516003700	SPECIAL SCREW	TT3 HEX 4X8 FLG MFZN	4
F28	3517304310	FOAM	CR 10TX180X15	1
F29	3510311700	BASE	SBHG T6.0	1
F30	7112401011	SCREW TAPPING	T1 TRS 4*10 MFZN	5
F31	3512101900	FOOT *B	PP	2
F32	3512102000	FOOT *F	PP	2
F33	7272400811	SCREW TAPTITE	TT3 TRS 4X8 MFZN	1
F34	3515201101	STOPPER HINGE *U	SCP-1 T2.5	1

✓ **Caution** : In this Manual, some parts can be changed for improving, their performance without notice in the parts list. So, if you need the latest parts information, please refer to PPL(Parts Price List) in Service Information Center (<http://svc.dwe.co.kr>).

NO	PART CODE	PART NAME	DESCRIPTION	Q'TY
F35	7122401211	SCREW TAPPING	T2S TRS 4X12 MFZN	1
F36	7122401211	SCREW TAPPING	T2S TRS 4X12 MFZN	1
F37	3518570400	SWITCH S/A RELAY	DWSR-1	1
F38	4415A17352	SW MICRO	VP-533A-OF SPNO #187 200G	1
F39	4415A66910	SW MICRO	VP-531A-OF/SZM-V16-FA-61	1
F40	4415A17352	SW MICRO	VP-533A-OF SPNO #187 200G	1
F41	3513702620	LEVER LOCK	POM	1
F42	3513811750	LOCK	FH-44N	1
F43	3513601600	LAMP	BL 240V 25W T25 C7A H187	1
F44	3512714800	HARNESS MAIN	KOG-37150S EC	1
F45	7112401011	SCREW TAPPING	T1 TRS 4*10 MFZN	1
F46	3966031600	MOTOR SYNCRO	220/240V 50/60HZ ST-16 MN73MQAD A	1
F47	3518907100	THERMOSTAT	OFF:95 ON:85 H #187 NO	1
F48	3513003410	HOLDER THERMOSTAT	PP(BK)	1
F49	7272400811	SCREW TAPTITE	TT3 TRS 4X8 MFZN	2
F50	3511405100	COVER WAVE GUIDE	MICA T0.5	1
F51	3517400600	COUPLER	XAREC	1
F52	4078502031	BUTTON LOCKING	PP	2
F53	7S627W50X1	NUT HEX	NUT FLANGE M5X0.8P MFZN	2
F54	3511413800	COVER INSULATOR *T	SBHG T0.4	1
F55	7112401011	SCREW TAPPING	T1 TRS 4*10 MFZN	1
F56	3514700710	ROLLER	TEFLON	3
F57	3512517300	GUIDE ROLLER	PP	1
F58	3517203600	TRAY	GLASS(KOG-8A275S)	1
	3517202310	TRAY GLASS	GLASS DIA:280(KOG-8A275S39,40)	1
F59	3517206900	TRAY RACK AS	KOG-37150S 110MM	1



DAEWOO ELECTRONICS CORP.

1-2, Jeo-dong 1(ii)-ga, Jung-gu, Seoul, Korea

C.P.O. BOX 8003 SEOUL, KOREA

TELEX: DWELEC K28177-8

CABLE: "DAEWOOELEC"

PRINTED DATE: Nov. 2009

S/M NO. :

ABOUT THIS MANUAL

VISION CREATIVE, INC.

서울 종로구 통의동
6번지 이룸빌딩 4층

담 당	김영진 님	
MODEL	KOG-8A275S / 8A275S39 / 8A275S40 (S/M)	
접 수	2009.11.23	
일 정	1차	
	2차	
	3차	
	4차	
	5차	
제 판	한	인 쇄
규 격		
<p>MEMO 총 28p 09.11.23-표지, 표지뒤, 1p, 3p, 5p, 7p, 10p, 11p, 16p, 21p, 24p, 25p, 26p_ 신규 13p 09.11.24-12p, 25p, 26p 수정_ 신규 3p</p>		

연락처

VISION 담당 방문수

TEL: 730-0660 FAX: 730-3788