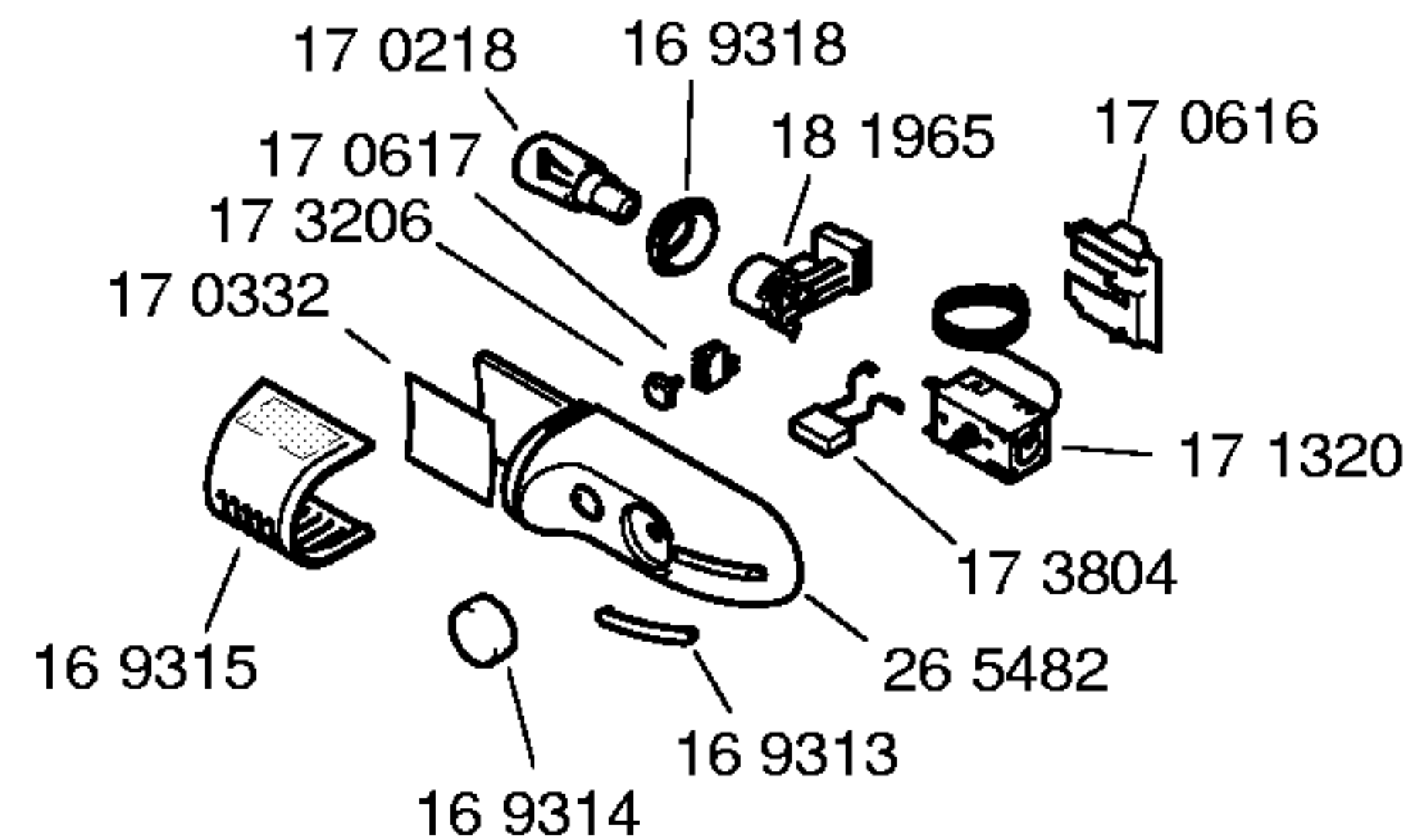
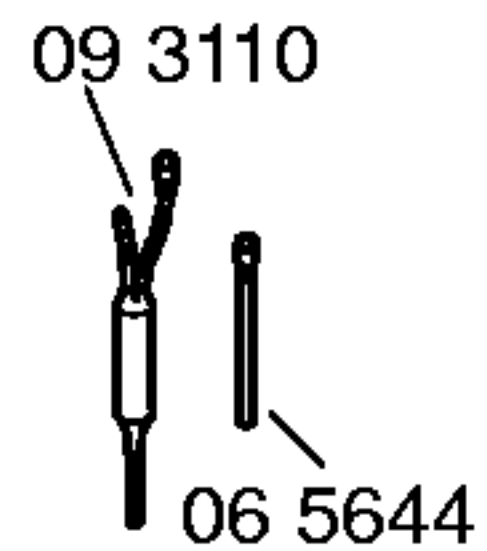
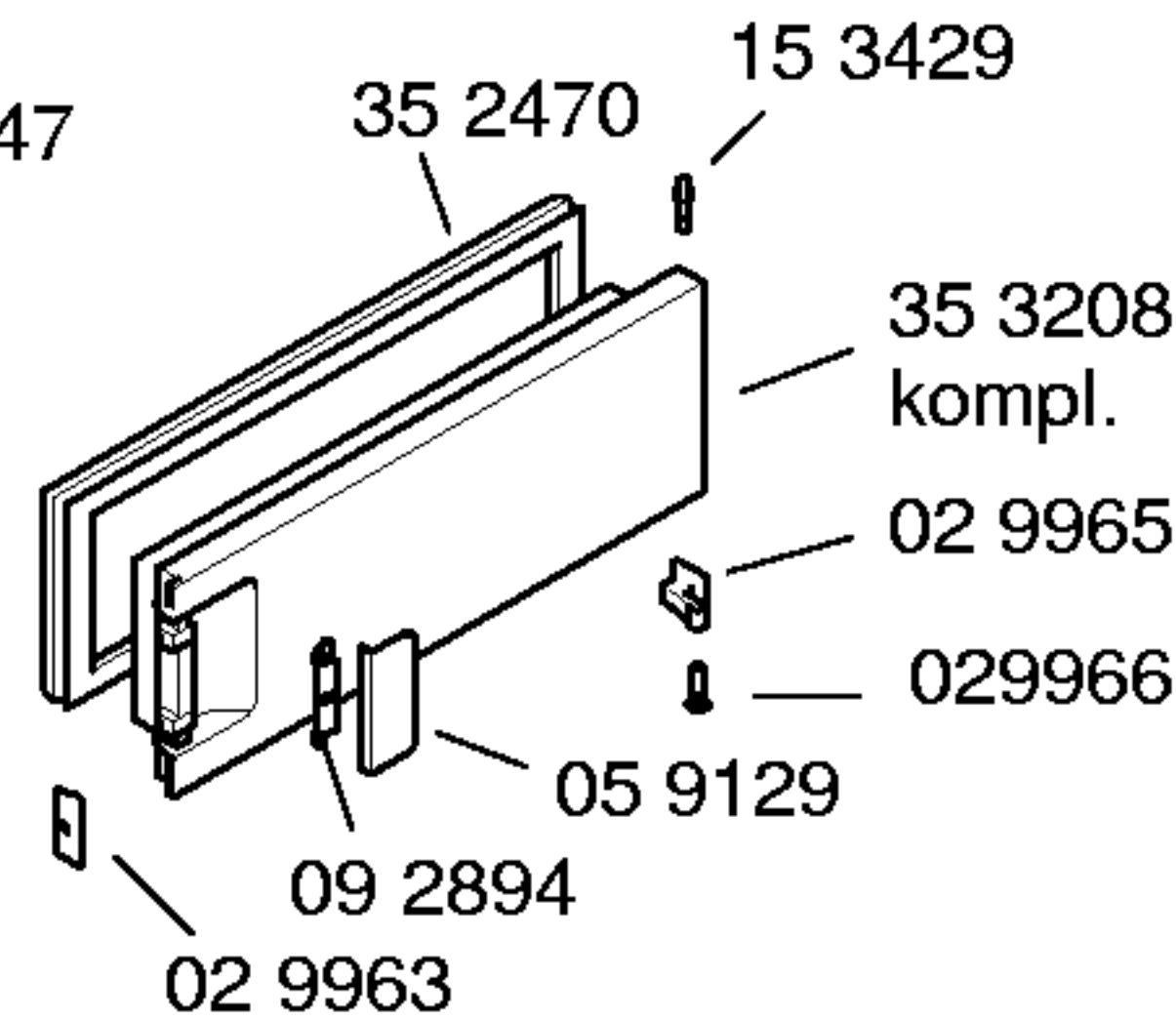
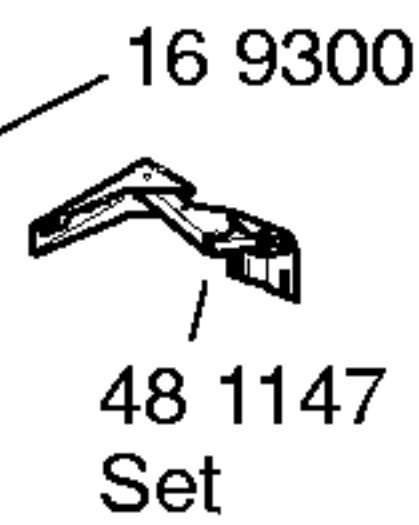
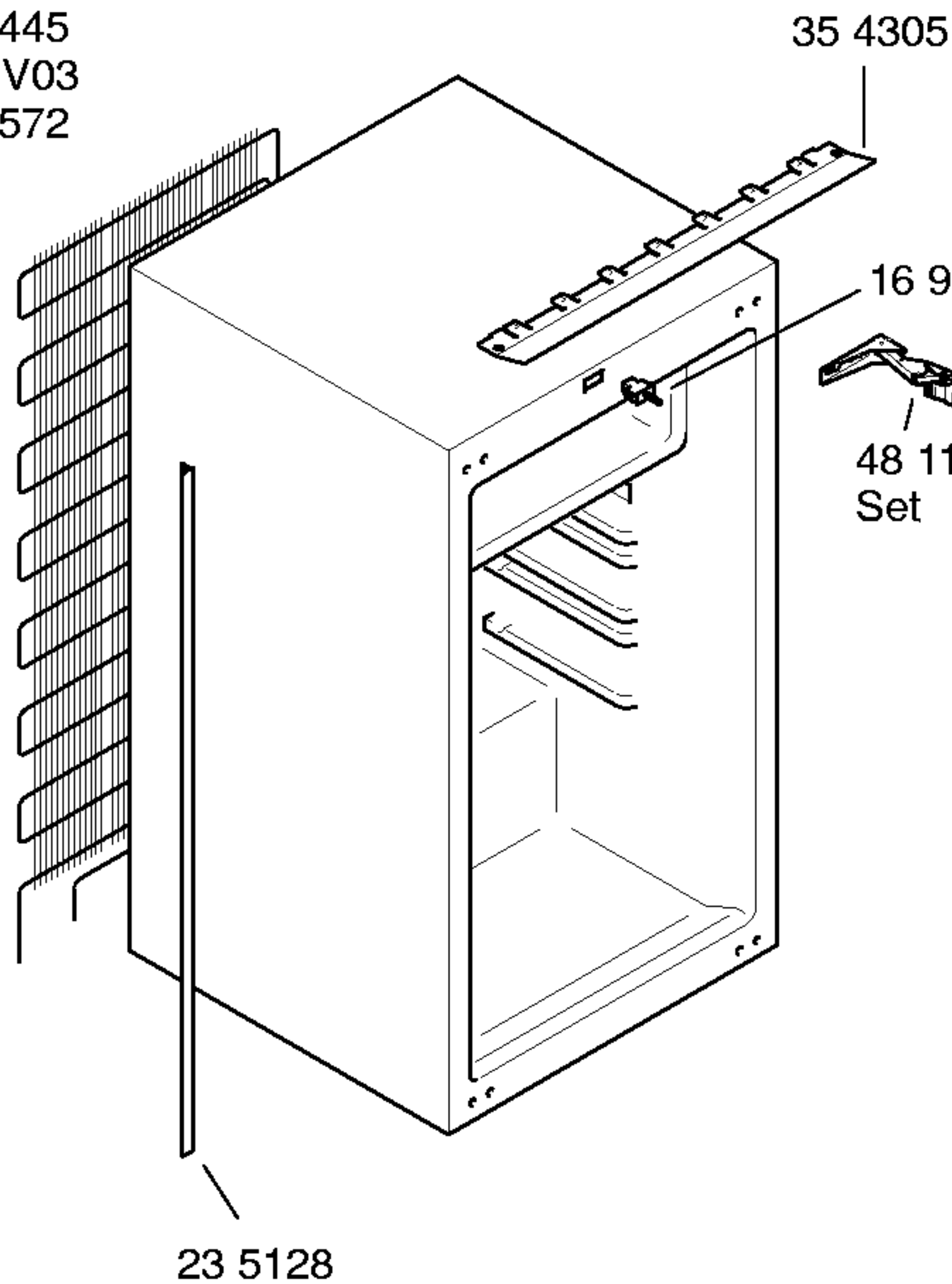




07 4445
 V01, V03
 09 6572
 V02



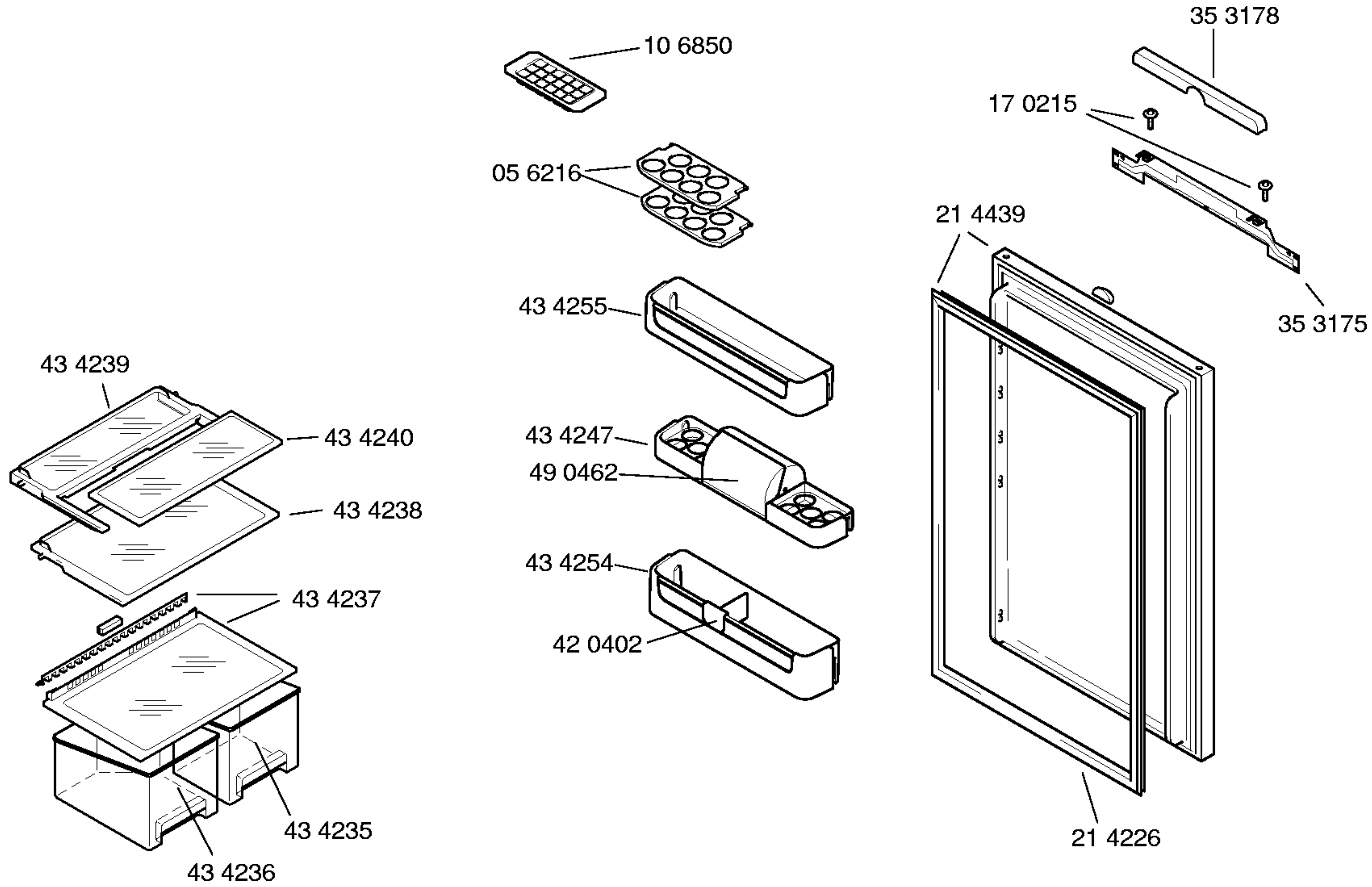
Mat. - Nr. - Konstante
 3740

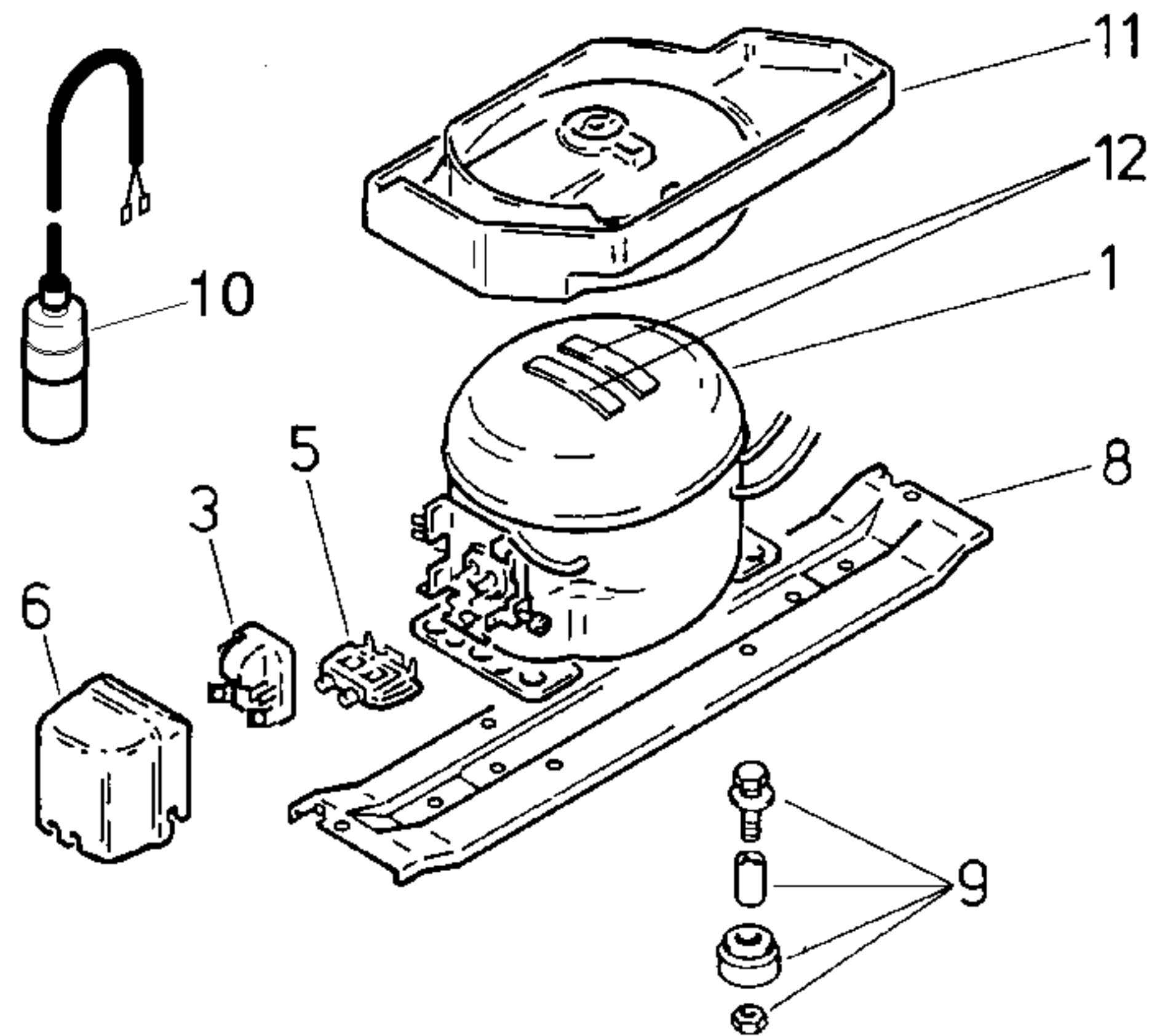
Gebrauchsanweisung
 58 6318
 (DE, EN, FR, IT, NL, DA)
 Montageanleitung
 52 3227
 (DE, EN, FR, IT, NL, DA
 NO, FI, SE, TR)

Beistellsatz
 26 6056

Listerien Rep.Satz
 41 7589
 V03

Mat. - Nr. - Konstante
3740





	V01		
	Danfoss		
Pos.	TLY 6 KK2		
1	14 2058		
2			
3	15 1055		
4			
5	15 0760		
6	15 1072		
7	16 9319		
8	26 4879		
9	0 50166		
10	16 5852		
11	36 5099		
12	05 6008		

TECHNISCHE DATEN / TECHNICAL DATA / DONNEES TECHNIQUES			
Verdichter/Compressor/Compresseur		Danfoss	
Typ/Type		TLY 6 KK2	
Förderleistung/Delivery/Débit	l/h	1026	
Anlaufstrom/Starting current/Cour de démarrage	A	4,4	
Widerstand/Resistance/Résistance	Ha/main/prin	34,0	
	Hi/aux	31,0	
Temp.–Regler/Thermostat		Ranco	
Typ/Type		K59	
Regelstellung/Position		kalt	warm
Schaltwerte/Switching values	"warm"	+4,0	+4,0
Valeurs de commutation	"kalt"	-32,0	-12,0
	"alarm"		
Füllmenge/Fill.quantity/Charge	R600a	*	
Anschlußwert/Conn.load/Puiss. connectée	W	68	
Heizung/Heater/Chauffage			
Widerstand/Resistance/Résistance	Ω		
Leistung/Power/Puissance	W		
Ventilator/Blower/Ventilateur			
Widerstand/Resistance/Résistance	Ω		
Temp.–Regler/Thermostat			
Magnetventil/Magnetic valve/Electrovanne			
Widerstand/Resistance/Résistance	Ω		
Spannung/Voltage/Tension	V		

* siehe Typenschild