



SEC 1. DISASSEMBLY AND PARTS LIST

- Items with no part number and no description are not stocked because they are seldom required for routine service.
- The construction parts of an assembled part are indicated with a collation number in the remark column.
- Items marked " * " are not stocked since they are seldom required for routine service. Some delay should be anticipated when ordering these items.

The components identified by shading and mark  are critical for safety. Replace only with part number specified.

The components identified by mark  contain confidential information. Strictly follow the instructions whenever the components are repaired and/or replaced.

IMPORTANT: When replacing LCD Panel or Circuit Boards ensure that all Radiation Sheets and Insulation Sheets are in their correct positions in the TV set.

1-1. KDL-26BX320/321

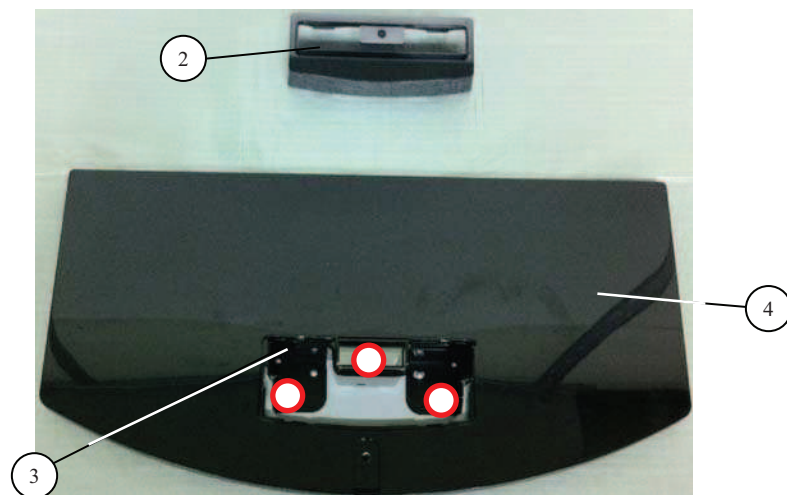
1-1-1. REAR COVER ASSY AND STAND BLOCK



REF. No.	PART No.	DESCRIPTION	REMARK
1	WS0020401	REAR COVER (GW26)	
2	WS0018201	COVER, NECK (M3B)	
3	WS0018101	NECK (M3B)	
4	WS0017601	BASE (M3B) ASSY	BX320
	WS0017701	BASE (M5B) ASSY	BX321

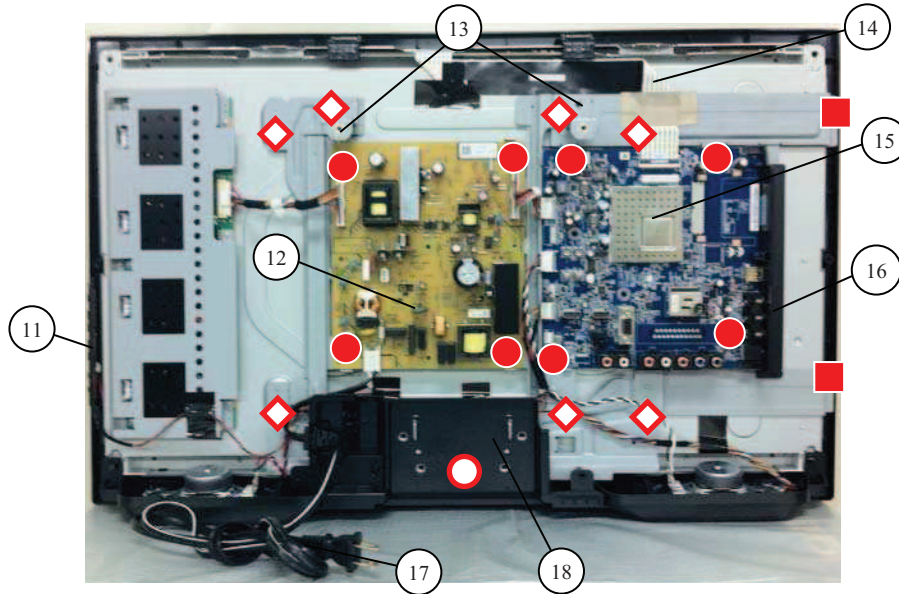
- WS0030801 SCREW +BVTP2 4X16
- ★ WS0010101 SCREW +BVTP 3X12 TYPE2 IT-3
- ▲ WS0002901 SCREW, +PSW M5X16
- WS0018001 SCREW, +PSW M4X10

1-1-2. NECK COVER, NECK AND BASE ASSY



1-1. KDL-26BX320/321

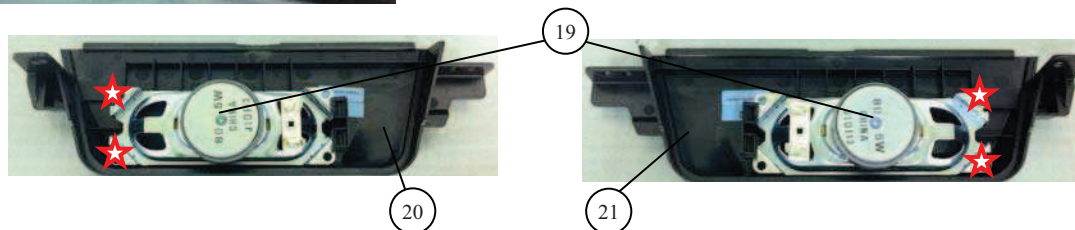
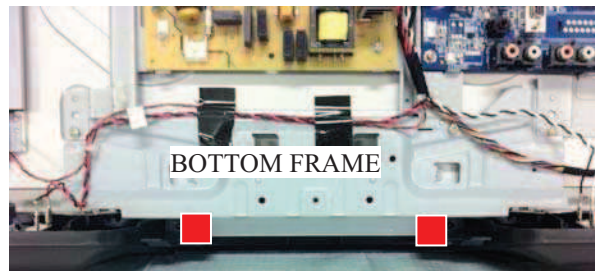
1-1-3. G13 BOARD, A BOARD, SWITCH UNIT, VESA BRACKET AND SIDE BRACKET



REF. No.	PART No.	DESCRIPTION	REMARK
11	WS0016001	SWITCH UNIT	
12	WS0015801	STATIC CONVERTER (TV)-G13	
13	WS0020001	BRACKET, VESA (GW26)	
14	WS0019701	CONNECTOR ASSY 26 FFC WXGA EU	
15	WS0016301	MOUNTED PWB A	
16	WS0017001	BRACKET, SIDE (EU) (GW)	
17	WS0020501	POWER SUPPLY CORD (WITH CORE)	
18	WS0018301	COVER, UNDER (GW26)	
19	WS0019601	LOUDSPEAKER (4X10CM)	
20	WS0020101	BRACKET, SP (GW26R)	
21	WS0020201	BRACKET, SP (GW26L)	

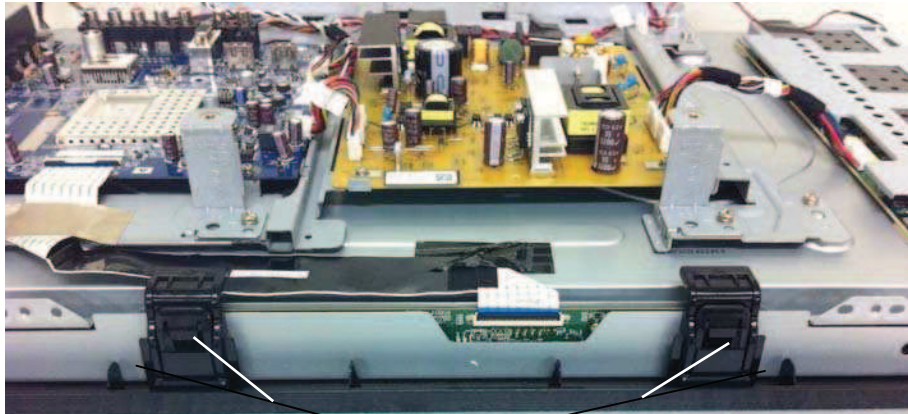
- WS0020701 SCREW, +PSW M3X8
- WS0030801 SCREW +BVTP2 4X16
- ★ WS0010101 SCREW +BVTP 3X12 TYPE2 IT-3
- WS0018001 SCREW, +PSW M4X10
- ◊ WS0030701 SCREW, +PSW M4X8

1-1-4. SPEAKER BRACKET AND SPEAKER

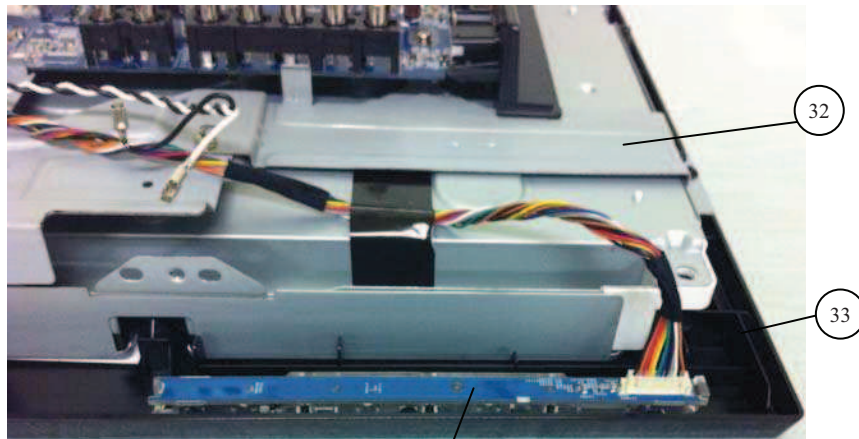


1-1. KDL-26BX320/321

1-1-5. PANEL SUPPORT, H BOARD, LCD PANEL AND BEZEL ASSY



31



32

33

34

REF. No.	PART No.	DESCRIPTION	REMARK
31	WS0016901	PANEL SUPPORT (A)	
32	1-811-375-11	LCD PANEL (A26V7)	
33	WS0020301	BEZEL (GW26)	
34	WS0016501	MOUNTED PWB H	

1-2. KDL-32BX320/321, BX420

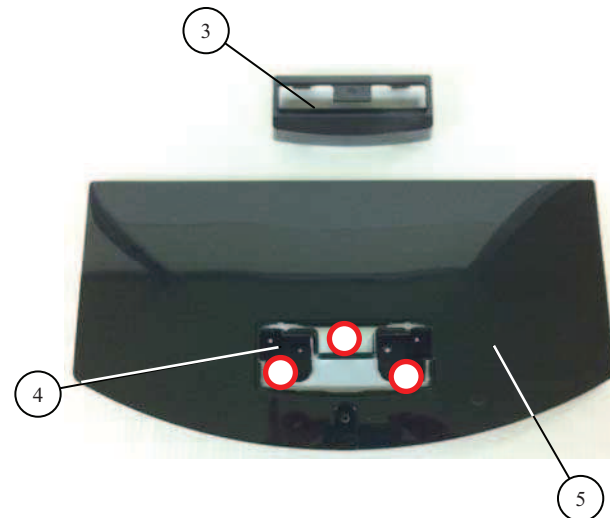
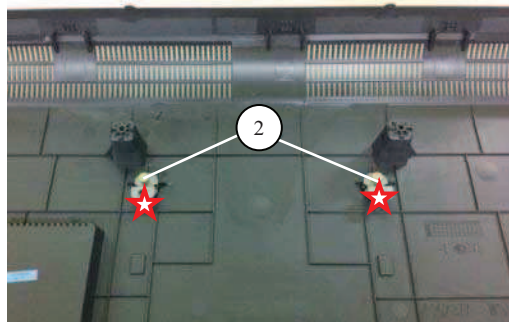
1-2-1. REAR COVER ASSY AND STAND BLOCK



REF. No.	PART No.	DESCRIPTION	REMARK
1	WS0018701	REAR COVER (GW32)	
2	WS0018801	BRACKET, VESA (M6) (GW)	
3	WS0018201	COVER, NECK (M3B)	
4	WS0018101	NECK (M3B)	
5	WS0017601	BASE (M3B) ASSY	BX320,420
	WS0017701	BASE (M5B) ASSY	BX321

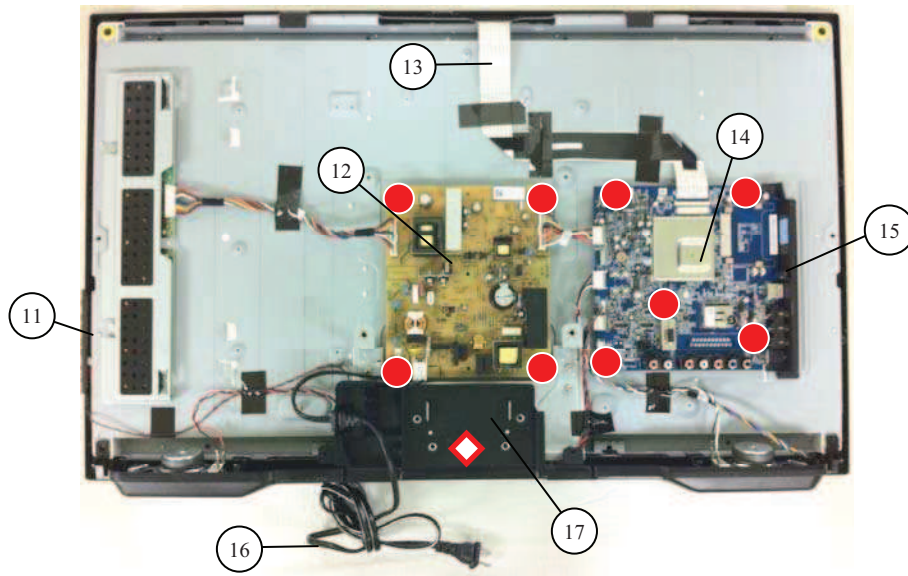
■	WS0030801	SCREW +BVTP2 4X16
▲	AW P.No Info	SCREW, +PSW M3X12
★	WS0010101	SCREW +BVTP 3X12 TYPE2 IT-3
△	WS0002901	SCREW, +PSW M5X16
○	WS0018001	SCREW, +PSW M4X10

1-2-2. VESA BRACKET, NECK COVER, NECK AND BASE ASSY



1-2. KDL-32BX320/321, BX420

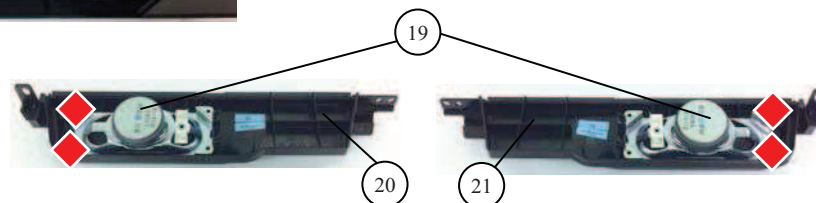
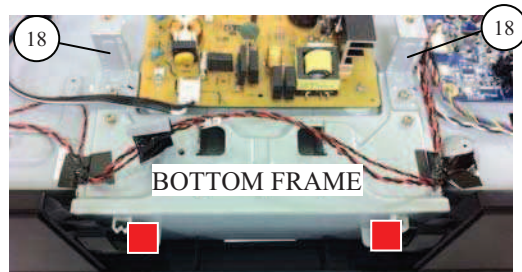
1-2-3. G13 BOARD, A BOARD, SWITCH UNIT AND SIDE BRACKET



REF. No.	PART No.	DESCRIPTION	REMARK
11	WS0016001	SWITCH UNIT	
12	WS0015801	STATIC CONVERTER (TV)-G13	
13	WS0016701	CONNECTOR ASSY 32 FFC WXGA EU	BX320,321
	WS0016801	CONNECTOR ASSY 32 FFC FHD EU	BX420
14	WS0016301	MOUNTED PWB A	BX320,321
	WS0016401	MOUNTED PWB A	BX420
15	WS0017001	BRACKET, SIDE (EU) (GW)	
16	WS0019301	POWER SUPPLY CORD (WITH CORE)	
17	WS0018301	COVER, UNDER (GW26)	
18	WS0017101	BRACKET, VESA (GW32)	
19	WS0016601	LOUDSPEAKER (4X10CM)	
20	WS0018401	BRACKET, SP (GW32R)	
21	WS0018501	BRACKET, SP (GW32L)	

- WS0020701 SCREW, +PSW M3X8
- WS0030801 SCREW +BVTP2 4X16
- ◆ WS0010101 SCREW +BVTP2 3X12
- ◇ WS0030701 SCREW, +PSW M4X8

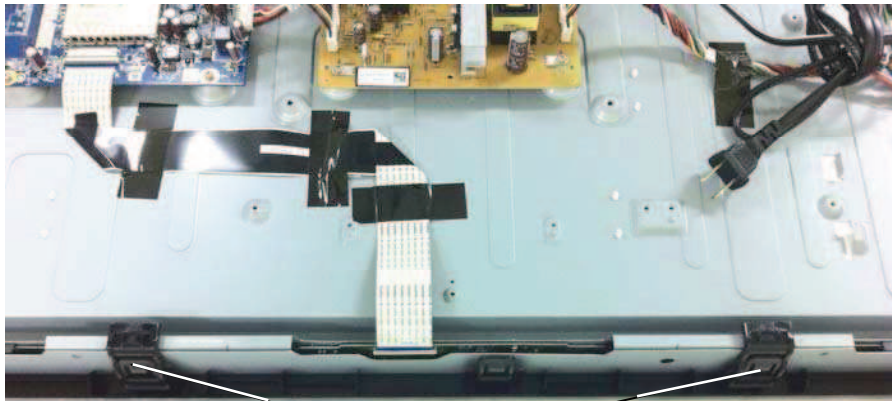
1-2-4. VESA BRACKET, BOTTOM FRAME AND H BOARD



1-2. KDL-32BX320/321, BX420

1-2-5. PANEL SUPPORT, H BOARD, LCD PANEL AND BEZEL ASSY

REF. No.	PART No.	DESCRIPTION	REMARK
31	WS0016901	PANEL SUPPORT (A)	
32	1-811-376-11	LCD PANEL (A32VE)	BX320,321
	1-811-377-11	LCD PANEL (A32VC)	BX420
33	WS0018601	BEZEL (GW32)	
34	WS0016501	MOUNTED PWB H	



31



32

33

34

1-3. KDL-37BX420

1-3-1. REAR COVER ASSY AND STAND BLOCK

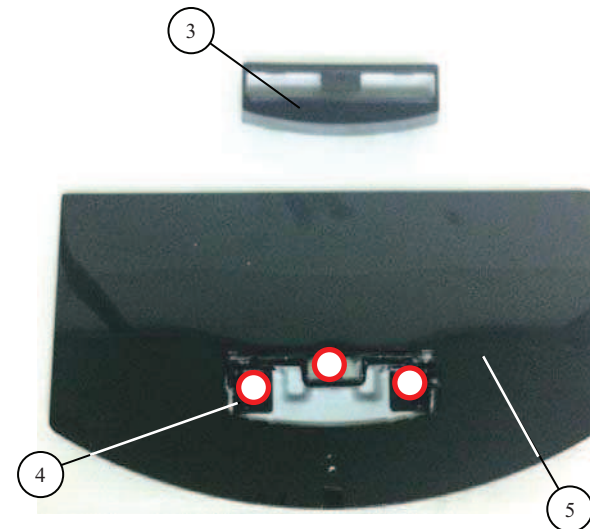
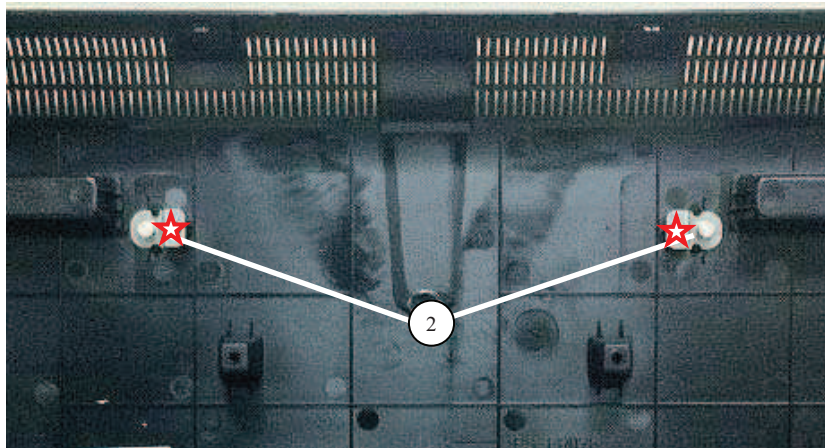


REF. No.	PART No.	DESCRIPTION	REMARK
----------	----------	-------------	--------

1	WS0023001	REAR COVER (GW37)	
2	WS0018801	BRACKET, VESA (M6) (GW)	
3	WS0022501	COVER, NECK (ML3B)	
4	WS0022401	NECK (ML3B)	
5	WS0022301	BASE STAND (ML3B)	

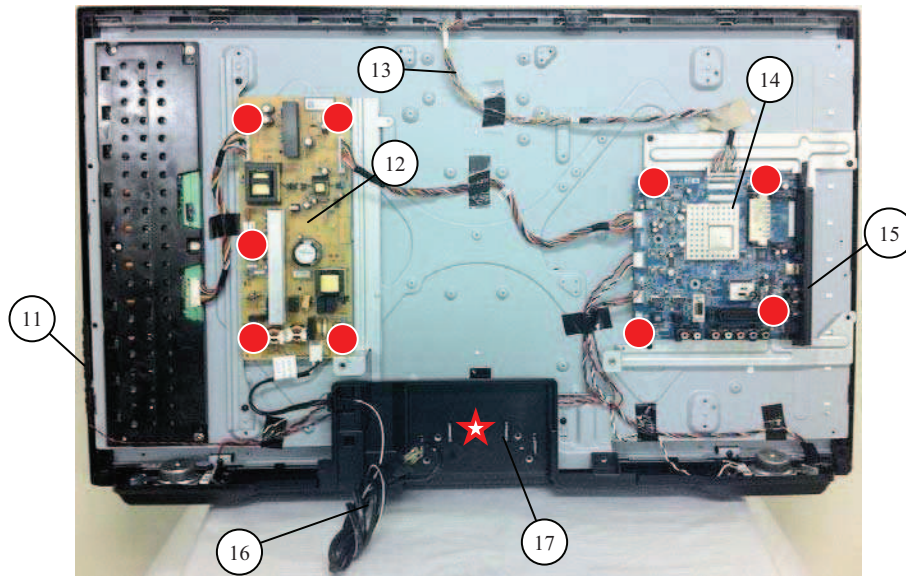
△	WS0002901	SCREW, +PSW M5X16	
▲	WS0030701	SCREW, +PSW M4X8	
■	A/W P.No Info	SCREW +BVTP2 4X25	
☆	WS0010101	SCREW +BVTP2 3X12	
○	WS0018001	SCREW, +PSW M4X10	

1-3-2. VESA BRACKET, NECK COVER, NECK AND BASE ASSY



1-3. KDL-37BX420

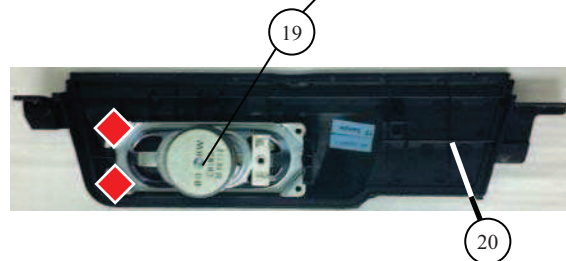
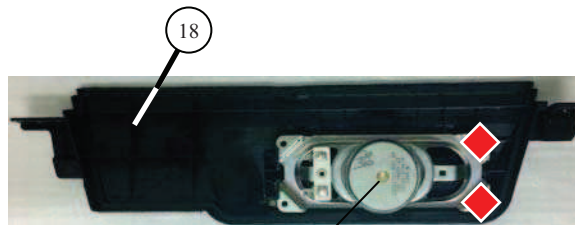
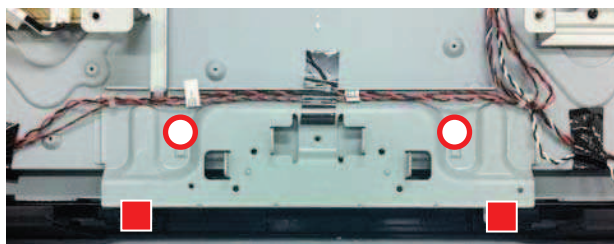
1-3-3. G13 BOARD, A BOARD, SWITCH UNIT AND SIDE BRACKET



REF. No.	PART No.	DESCRIPTION	REMARK
11	WS0016001	SWITCH UNIT	
12	△ WS0022101	STATIC CONVERTER (TV)-G14	
13	WS0022201	CONNECTOR ASSY 37 FFC FHD	
14	🔒 WS0016401	MOUNTED PWB A	
15	WS0017001	BRACKET, SIDE (EU) (GW)	
16	△ WS0023101	POWER SUPPLY CORD (WITH CORE)	
17	WS0022601	COVER, UNDER (GW37)	
18	WS0022801	BRACKET, SP (GW37L)	
19	WS0016601	LOUDSPEAKER (4X10CM)	
20	WS0022701	BRACKET, SP (GW37R)	

- WS0020701 SCREW, +PSW M3X8
- WS0030801 SCREW, +BVTP2 4X16
- ◆ WS0010101 SCREW +BVTP2 3X12
- WS0030701 SCREW, +PSW M4X8
- ★ WS0018001 SCREW, +PSW M4X10

1-3-4. BOTTOM FRAME AND SPEAKER



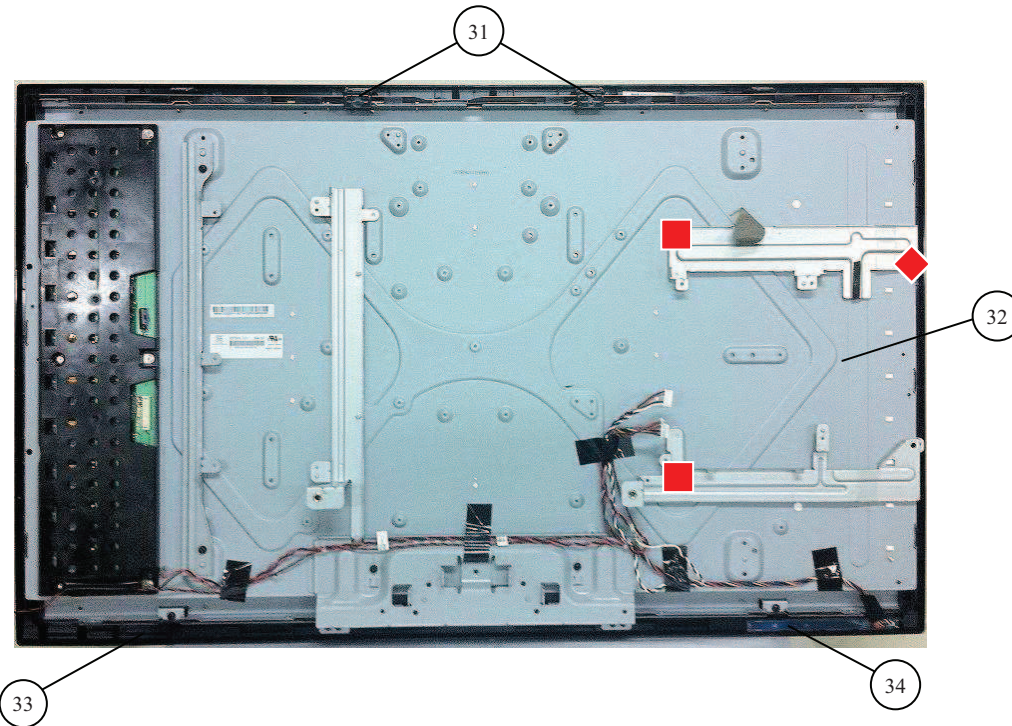
1-3. KDL-37BX420

1-3-5. PANEL SUPPORT, H BOARD, LCD PANEL AND BEZEL ASSY

REF. No.	PART No.	DESCRIPTION	REMARK
----------	----------	-------------	--------

31	WS0016901	PANEL SUPPORT (A)	
32	1-811-374-11	LCD PANEL (C37H4-L01)	
33	WS0022901	BEZEL (GW37)	
34	WS0016501	MOUNTED PWB H	

■	WS0030701	SCREW +PSW M4X8
◆	A/W P.No Info	SCREW +BVTP 4X25



1-4. KDL-40BX420

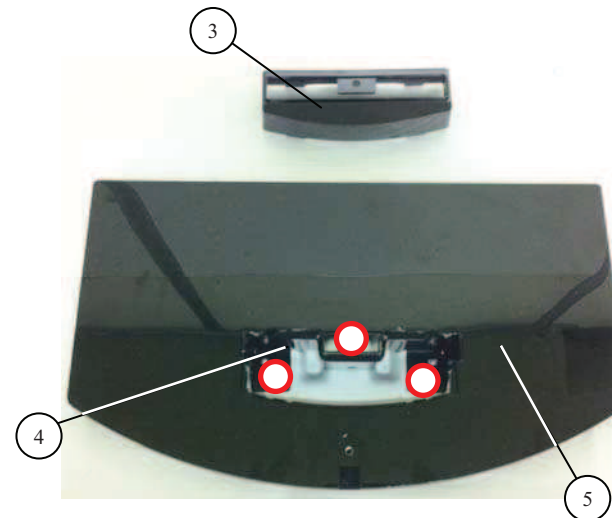
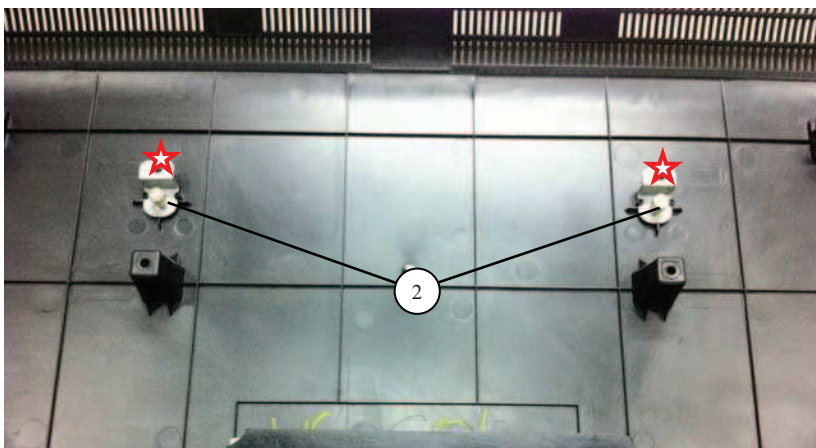
1-4-1. REAR COVER ASSY AND STAND BLOCK



REF. No.	PART No.	DESCRIPTION	REMARK
1	WS0024001	REAR COVER (GW40)	
2	WS0018801	BRACKET, VESA (M6) (GW)	
3	WS0022501	COVER, NECK (ML3B)	
4	WS0022401	NECK (ML3B)	
5	WS0022301	BASE STAND (ML3B)	

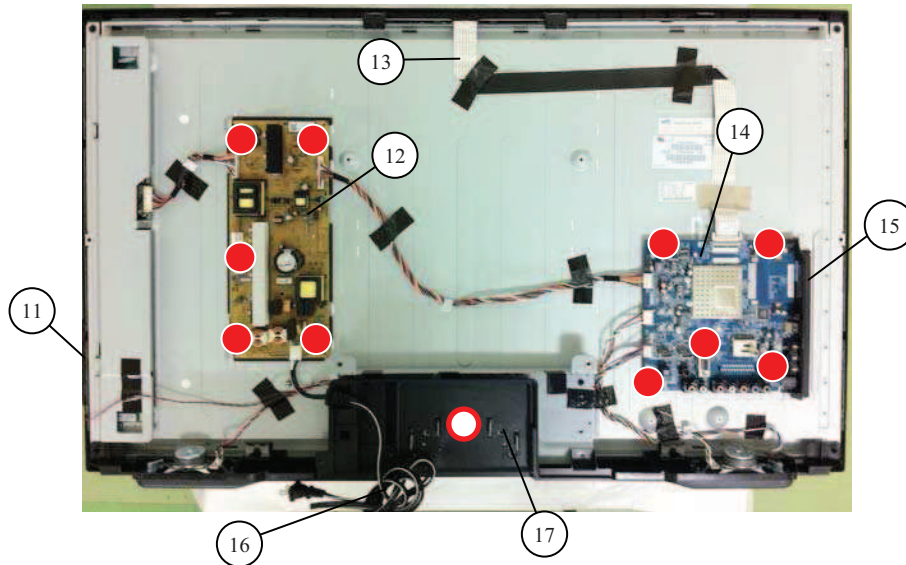
- WS0030801 SCREW +BVTP2 4X16
- ★ WS0010101 SCREW +BVTP 3X12 TYPE2 IT-3
- ▲ WS0002901 SCREW, +PSW M5X16
- WS0030701 SCREW, +PSW M4X8

1-4-2. VESA BRACKET, NECK COVER, NECK AND BASE ASSY



1-4. KDL-40BX420

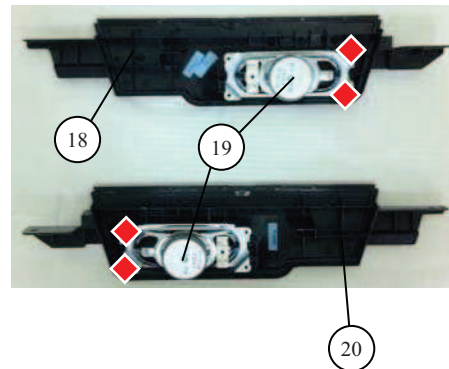
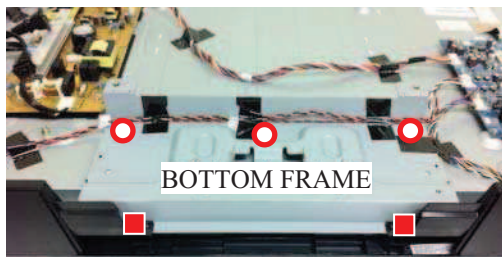
1-4-3. G13 BOARD, A BOARD, SWITCH UNIT AND SIDE BRACKET



REF. No.	PART No.	DESCRIPTION	REMARK
11	WS0016001	SWITCH UNIT	
12	WS0022101	STATIC CONVERTER (TV)-G14	
13	WS0023301	CONNECTOR ASSY 40 FFC FHD	
14	WS0016401	MOUNTED PWB A	
15	WS0017001	BRACKET, SIDE (EU) (GW)	
16	WS0024101	POWER SUPPLY CORD (WITH CORE)	
17	WS0022601	COVER, UNDER (GW37)	
18	WS0023801	BRACKET, SP (GW40L)	
19	WS0016601	LOUDSPEAKER (4X10CM)	
20	WS0023701	BRACKET, SP (GW40R)	

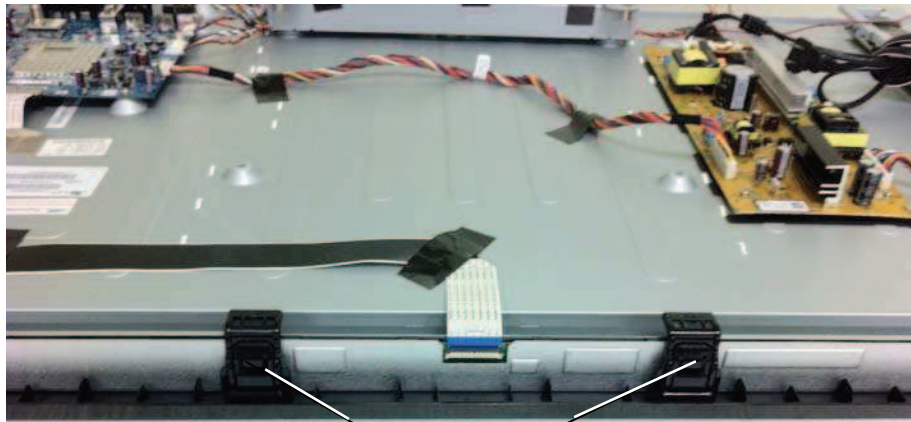
- WS0020701 SCREW, +PSW M3X8
- WS0030801 SCREW +BVTP2 4X16
- ◆ WS0010101 SCREW +BVTP2 3X12
- WS0018001 SCREW, +PSW M4X10

1-4-4. BOTTOM FRAME AND SPEAKER



1-4. KDL-40BX420

1-4-5. PANEL SUPPORT, H BOARD, LCD PANEL AND BEZEL ASSY



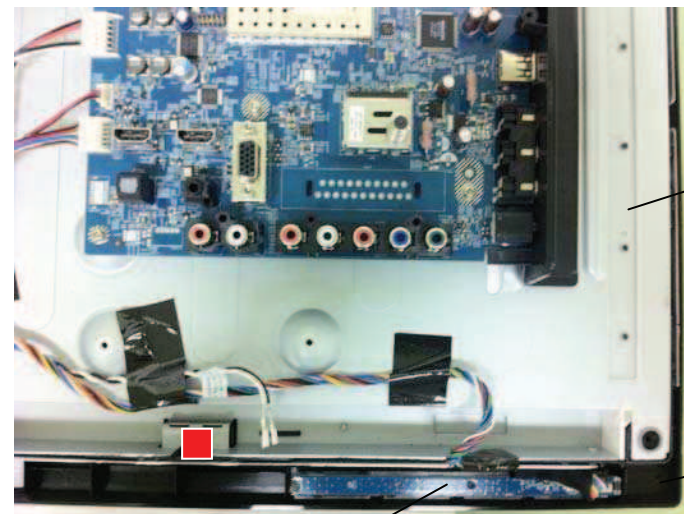
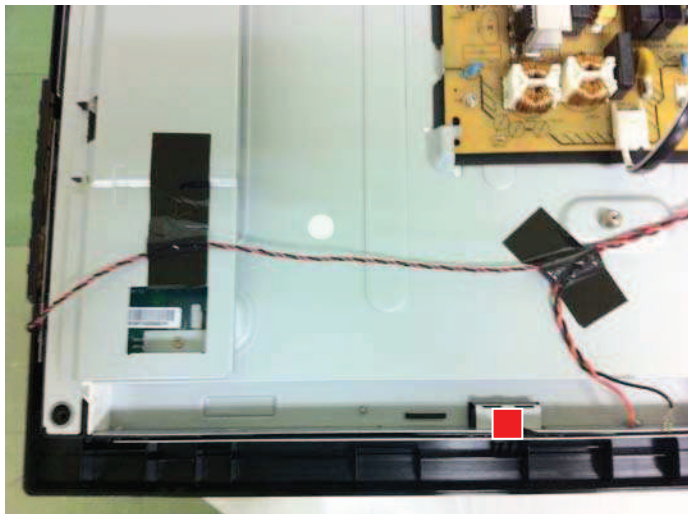
31

REF. No.	PART No.	DESCRIPTION	REMARK
31	WS0016901	PANEL SUPPORT (A)	
32	1-811-329-11	LCD PANEL (S40ESP)	
33	WS0023901	BEZEL (GW40)	
34	WS0016501	MOUNTED PWB H	



WS0030801

SCREW +BVTP2 4X16



32

33

34

1-5. OTHER PARTS

1-5-1. MISCELLANEOUS

WS0030501 BAG ASSY, SCREW (B) - (Contains Screw Part Numbers: WS0002901(4 pcs) & WS0018001(3 pcs))

1-5-2. ACCESSORIES

* WS0019001 MANUAL, INSTRUCTION
* WS0019101 MANUAL, INSTRUCTION
* WS0019201 MANUAL, INSTRUCTION
WS0015901 REMOTE COMMANDER (RM-ED046)