



Philips Domestic Appliances and Personal Care

# Service Manual

MSH coding 8837 725 0000  
8837 727 0000

## PRODUCT INFORMATION

The food processors are equipped with mechanical and thermal safety switches.

Motor power	: 600 W
Voltage	: 220-240 V ; 50-60 Hz : 120 V ; 50-60 Hz
Cordset	: 125 cm
Speed settings	: HR 7725 2 speeds + pulse : HR 7727 variable speeds + pulse
Bowl capacity	: 2.5 l dry ingredients 1.0 l liquids
Blender capacity	: 1.0 l liquids 2.0 l (max. contents)
Speeds unloaded	: blender drive shaft 17000 rpm (max) acc. drive shaft 2150 rpm (max) acc. drive shaft 1400 rpm (min)
Weight in fancy box	: HR 7725 - 5100 g HR 7727 - 5700 g
Dimensions (l x w x h)	: HR 7725 - 410 x 273 x 375 HR 7727 - 410 x 273 x 510

### Safety lock (item 1)

Place the lid on the bowl in the right position.

The appliance will only function if the arrow on the appliance is directly opposite the mark on the lid of the food processor bowl and the same holds for the other accessoires. The built-in safety lock will now be deblocked and you can turn the appliance on.

Note that if both the blender jar and the bowl have been correctly mounted, only the blender will function.

### Important:

If the appliance is used without the blender jar, the appliance will not function if the screw cap has not been screwed onto the attaching hole for the blender.

### Automatic resettable cut-out (part of item 7)

To prevent damage due to overheating, the appliance has been equipped with an automatic cut-out system. This system will automatically cut off the power supply when the appliance overheats.

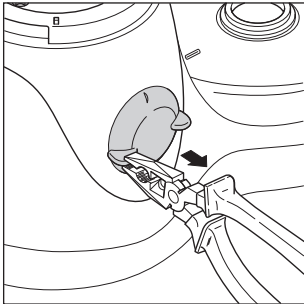
If the appliance suddenly stops running:

- Unplug the appliance
- Set the knob to position 0
- Let the appliance cool down for 15 minutes
- Plug the appliance in again
- Switch the appliance on again

**SERVICE INFORMATION**

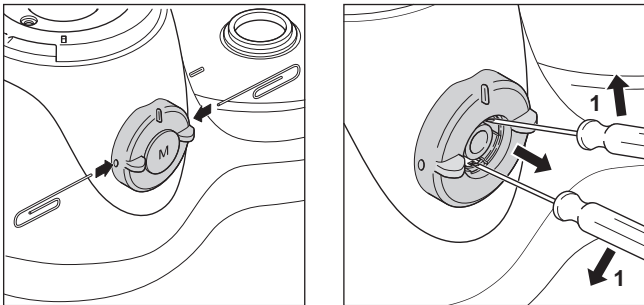
**- HR 7725**

A separate drawing shows how to disconnect the speed selection knob.



**- HR 7727**

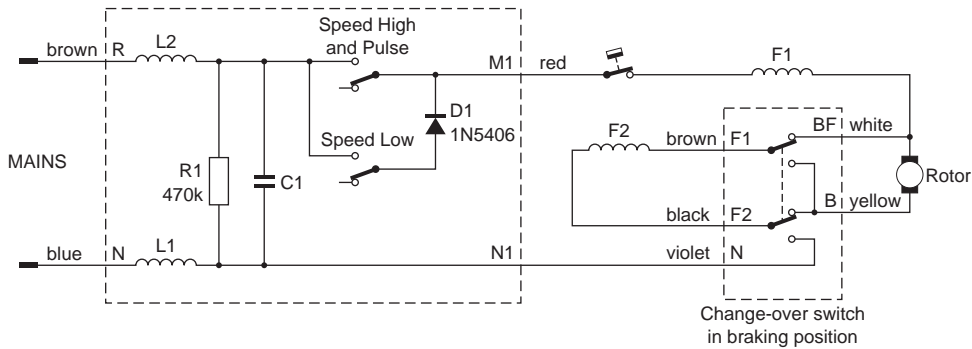
First remove the pulse button (marked "M") as shown in the figure. Then unlock two snap connections to remove the variomatic knob from the top housing.



**- HR 7727**

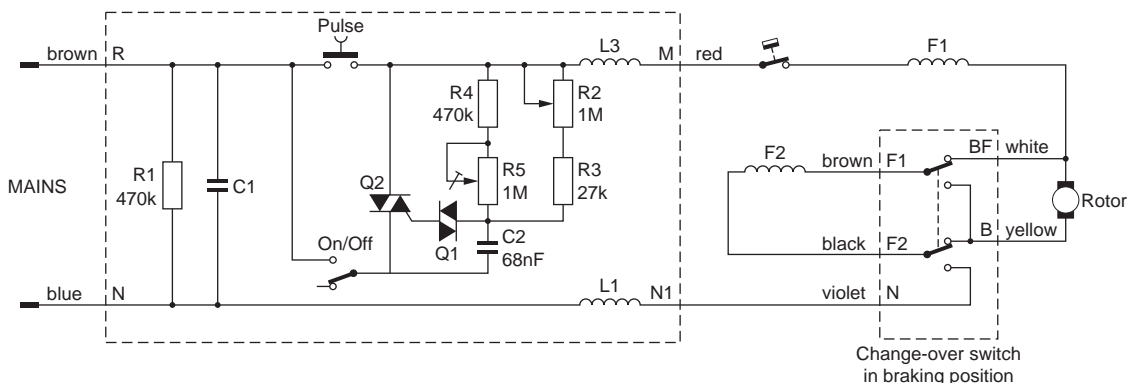
Remove the Poti gear (item 32) by turning it clockwise until the arrows face each other.

- The blender coupling on the motor shaft has been provided with the customary left-hand thread. The drive coupling (item 11) can be detached by means of a hammer and a screwdriver. Strike the screwdriver with a short sharp blow and remove the drive coupling. Or block the acc. drive wheel (item 23) and thereby the rotor shaft, by sticking a pin through the hole (5 mm dia.) in the bottom plate.
- The top housing (item 29) can be removed by detaching the snap connections by sticking a pin (or a screwdriver) through the small round holes (3 mm dia.) in the bottom plate (item 27) and the housing (item 12). The arrows in the drawing show the locations of the holes.
- In order to replace the speed selection or variomatic knob, the locking lever (item 33) must be placed in its lowest position.
- The minimum speed of the HR 7727 can be set when the pulse button (the button marked with an "M") is not mounted. The minimum speed (rpm) has been correctly set if the motor starts automatically and continues to run smoothly with the variomatic knob and the adjustable potentiometer in the lowest setting.
- The accessory drive shaft (item 15) has a locking piece (item 14).
- The assembly of the accessories depends on the national version.
- For specific versions, the component configuration may differ from the one shown on the exploded view. However, the actual components can be distinguished by their code numbers.
- Make sure that all functions, including the safety devices, are working correctly after you have completed the repair.



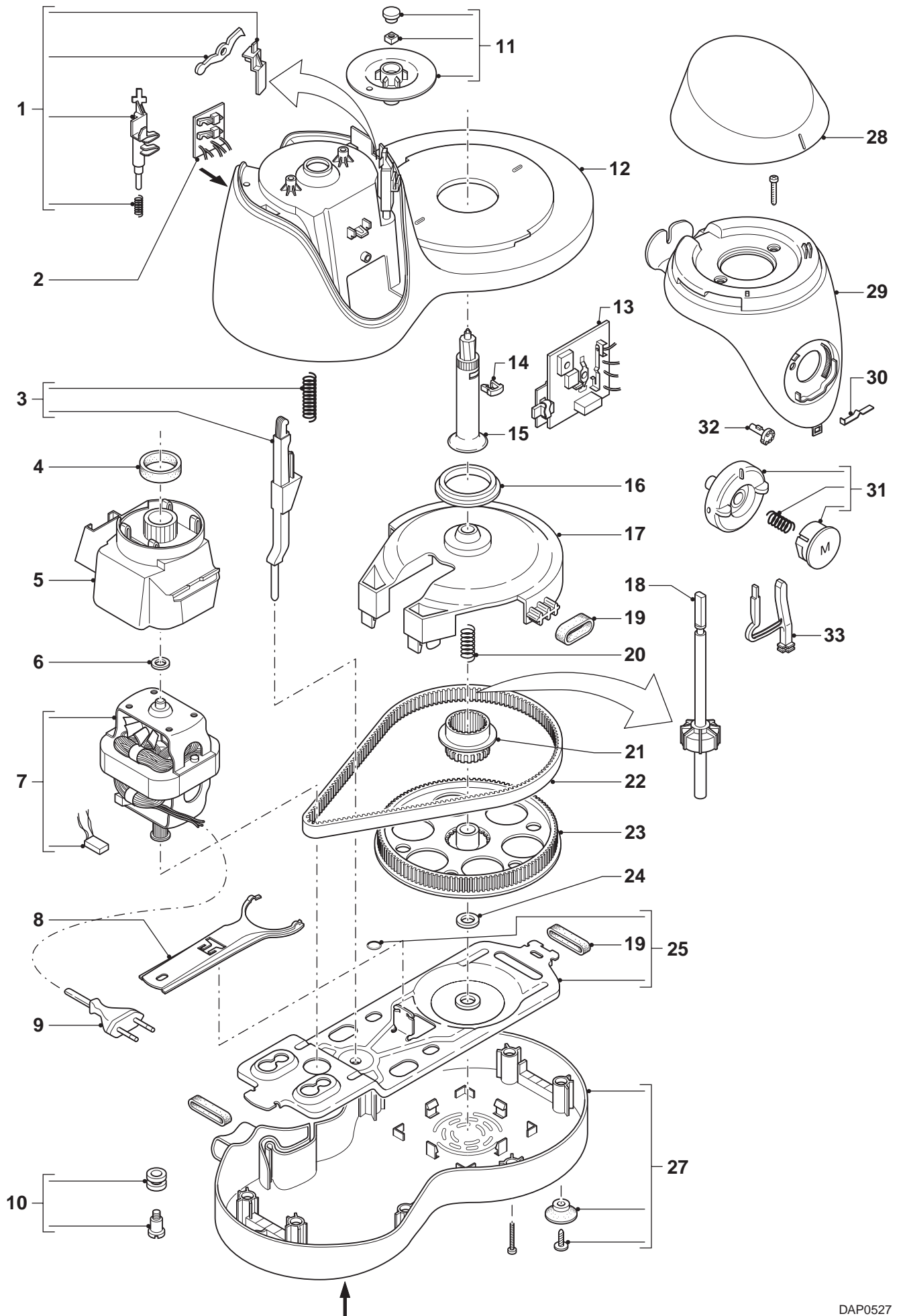
**HR 7725**

DAP0535

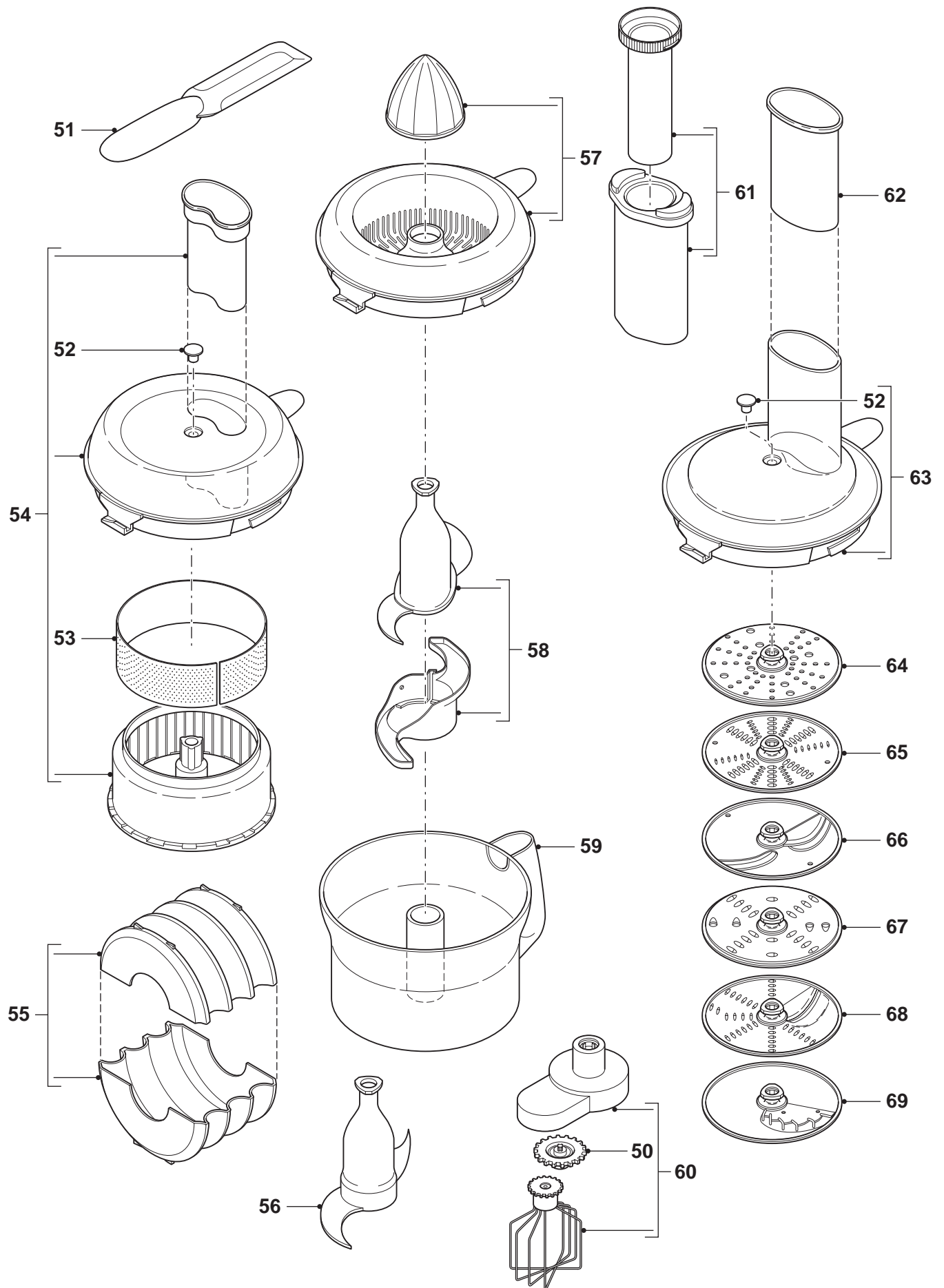


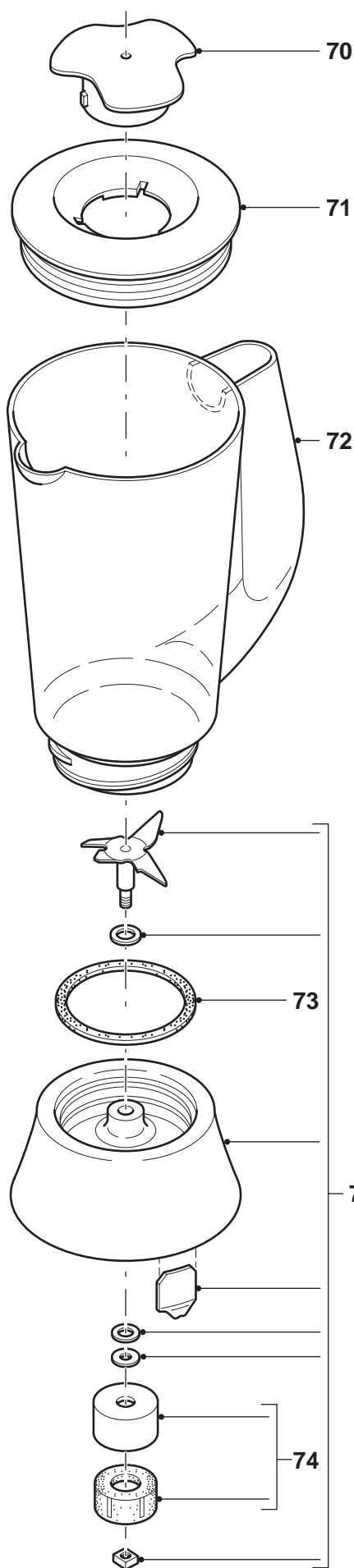
**HR 7727**

DAP0536



			HR 7725	HR 7727
1	4822 402 11078	print + switch lever	x	x
2	4822 214 12762	print plate brake	x	x
3	4822 402 11079	coupling lever	x	x
4	4822 532 13008	rubber piece	x	x
5	4822 462 11074	air tunnel	x	x
6	4822 532 13011	support ring	x	x
7	4822 361 11081	motor 230 V	x	x
	4822 361 11082	motor 110 V	x	x
8	4822 466 11949	coupling fork	x	x
9	4822 321 10364	flex	x	x
10	4822 502 14593	motor screw assy	x	x
11	4822 528 11264	blender coupling	x	x
12	4822 441 12194	housing	x	x
13	4822 214 12767	print plate	x	-
	4822 214 12768	print plate	-	x
14	4822 402 11076	locking piece	x	x
15	4822 535 10548	drive spindle	x	x
16	4822 532 13009	rubber sealing	x	x
17	4822 466 11948	locking plate	x	x
18	4822 535 10549	spindle assy	x	x
19	4822 530 10492	rubber tube	x	x
20	4822 492 11649	compression spring	x	x
21	4822 528 11265	coupling piece	x	x
22	4822 358 10257	tooth belt	x	x
23	4822 528 11266	belt wheel	x	x
24	4822 520 10851	bearing	x	x
25	4822 466 11947	mounting plate	x	x
27	4822 442 01387	bottom plate	x	x
28	4822 442 01388	blender cover	x	-
	4822 442 01389	blender cover	-	x
29	4822 441 12196	housing top	x	-
	4822 441 12197	housing top	-	x
30	4822 492 11648	snap return spring	x	-
	4822 492 11651	snap spring	-	x
31	4822 410 11855	switch knob	x	-
	4822 410 11863	switch knob	-	x
32	4822 522 10712	poti gear	-	x
33	4822 402 11081	locking lever	x	x





				HR 7725	HR 7727
70	50	4822 522 33243	gear wheel of whisk	x	x
	51	4822 690 40212	spatula	x	x
	52	4822 462 11083	insert of lid	x	x
	53	4822 480 50477	sieve juice extractor	-	x
	54	4822 690 10157	juice extractor	-	x
71	55	4822 690 40267	storage box (4 acc.)	-	x
	56	4822 690 10159	kneading/mixing knife	x	x
	57	4822 690 10156	citrus press	-	x
	58	4822 690 10161	metal knife	x	x
	59	4822 418 10343	bowl (dry 2.5 l)	x	x
72	60	4822 690 40252	balloon beater (whisk)	x	x
	61	4822 442 01334	double pusher (opt.)	-	x
	62	4822 690 10158	mono pusher	x	-
	63	4822 442 01336	bowl cover	x	x
	64	4822 690 10139	patato grating disc (opt.)	-	-
	65	4822 690 40183	grating disc (fine/very fine)	-	x
	66	4822 690 40181	slicing disc (fine/medium)	-	x
	67	4822 690 40182	grating disc (coarse/medium)	-	x
	68	4822 690 10069	combi disc (slicing/grating)	x	-
	69	4822 690 10141	french fries (opt.)	-	-
	70	4822 462 11055	insert of cover	x	x
	71	4822 442 01335	cover	x	x
	72	4822 418 10342	beaker	x	x
	73	4822 532 13012	sealing ring	x	x
	74	4822 528 11267	driven coupling	x	x
	75	4822 690 10162	knife unit	x	x