



# SSB SWAP

PROGRAMING INSTRUCTION 2k12 – 2k15

History Version:  
WK1707 v1.1

# Programming the SSB 2k12/2k13/2k14/2k15 models

Please note that before using the SSB you need to program all necessary settings and update last available SW version

## 1. Programming Display Option Code

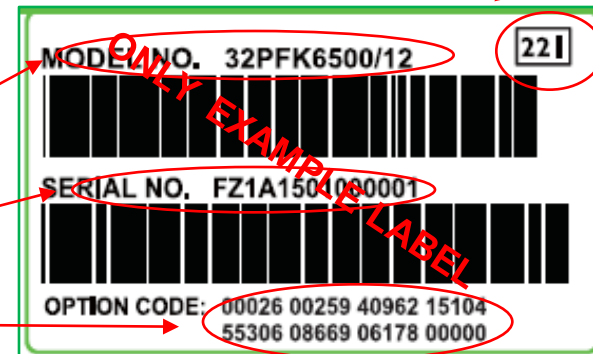
With new SSB delivered, you need to program the display option code. „3 digits” display code is available on Rating Label which You can find on back cover of TV set.

1. Enter **0 6 2 5 9 8**
2. Press **Menu** button
3. Enter **3-digit** Display Option Code

## 2. Programming Device Option Codes

Start SAM by:

1. Enter **0 6 2 5 9 6**
2. Press **info** or **OK**
3. Confirm Warning Message with „OK” or red button
4. Enter model number of device (see device label)
5. Enter serial number of device (see device label)
6. Check option code (see device label)
  - a) If not identical, correct at Options -> Option number
  - b) Confirm as saved and switch off SAM mode
  - c) Switch off / on TV set and correct if all settings was saved
7. Enter RGB white point alignment according Service Manual



## 3. SW update

1. Perform last available SW update via Philips P4S/P4C website

**Please note that before using the SSB you need to program all necessary settings and update last available SW version**

## 1. Programming Set Option code

Set Option Code: Instead of only changing the display option code, the set option code will program most of the necessary alignments in one step (only for => 2k16 models)

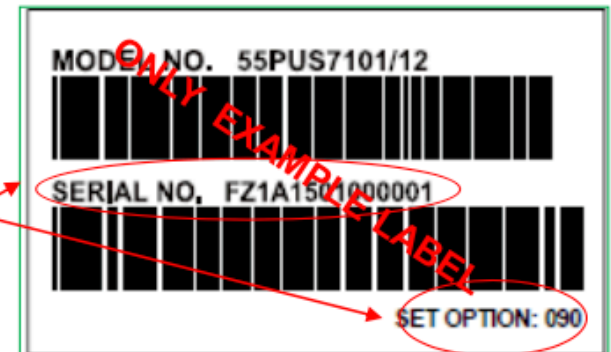
With new SSB delivered, you need to program the set option code. „3 digits“ code is available on Rating Label which You can find on back cover of TV set.

1. Enter **0 6 2 5 0 8**
2. Press **Menu** button
3. Enter **3-digit** Set Option Code

## 2. Programming Device Options

Start SAM by:

1. Enter **0 6 2 5 9 6**
2. Press **info**
3. Confirm Warning Message with „OK“ or red button
4. Enter serial number of device (see device label)



## 3. SW Update

1. Perform last available SW update via Philips P4S/P4C website

**Service codes overview:**

CSM menu	<b>123654</b>
SAM menu	<b>062596 + OK / 062596 + info</b>
MTK/NVT factory mode	<b>Menu + 1999 + back</b>
Display Option Code	<b>062598 + Menu + XXX (XXX = display option code)</b>
<b>New only for 2K16 sets:</b> Set Option Code	<b>062508 + Menu +XXX (XXX= set option code)</b>

**Thank You**