

PHILIPS

Service
Manual



Azur Performer Steam Iron

GC 4532

GC 4542

GC 4555

GC 4564

GC 4905

GC 4533

GC 4543

GC 4556

GC 4566

GC 4908

GC 4535

GC 4544

GC 4558

GC 4567

GC 4909

GC 4537

GC 4552

GC 4560

GC 4901

RI 4537

GC 4541

GC 4554

GC 4563

GC 4902

Contents

	Page
1. Important Repair Instructions	3
2. Product Information	
- Product Matrix	4
- Functions/ Features Information	7
3. Troubleshooting	8
4. Disassembly and Reassembly Instructions	9
5. Service Lists	14
6. Revision History	22

Important Repair Instructions

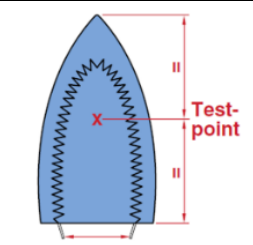
- Only skilled personnel should carry out the repair.
- After repair the appliance should function properly.
- After repair, the appliance has to meet the regulatory and safety requirements that were applicable at the time of release of the product.
- The following tests are common check that are conducted on a repaired appliance before it is return to the consumer.

a. Soleplate temperature

Check the soleplate temperature at maximum setting within IEC requirement.

Measure the temperature of the Soleplate after the iron has reached steady state i.e connected to the mains for at least 15 minutes. The table below shows the temperature requirement.

Soleplate temperature (Deg C)	
Minimum	Maximum
160	260



b. Leakage Current

Check leakage current according to IEC requirement.

Set input power to 1.15 times rated power.

Power on the appliance until steady.

Measure leakage current between LIVE- NEUTRAL & NEUTRAL - EARTH.

Criteria for acceptance: Leakage current shall not exceed 0.75mA.

c. Water leakage/ Functionality

Check that there is no water leakage from any part of product during operation.

Check that the functionality of the product (product dependent) eg. Steaming, variable steam, SOS, ASO etc is working properly..

d. Loose part

Check that there are no loose parts such as extra screws in the product that can cause short circuit or product malfunction.

e. Fuse open circuit

To replace Soleplate Assy from the product.

Product Information

Product Matrix



Model Number	GC 4532	GC 4533	GC4535	GC 4537 RI 4537/84
Power (W)	2400	2400	2400	2400
Ready to use (min)	2	2	2	2
Steam output (g/min)	45	45	45	45
Steam boost (g)	180	190	190	200
Soleplate	SteamGlide	SteamGlide	SteamGlide	SteamGlide
Water Tank (ml)	300	300	300	300
Automatic Shut-off	No	No	No	No
Drip stop	Yes	Yes	Yes	Yes
Ready light indicator	Yes	Yes	Yes	Yes
Integrated water spray	Yes	Yes	Yes	Yes
Eco Setting	Yes	Yes	Yes	Yes
Turbo setting	Yes	Yes	Yes	Yes
Calc Solution	Quick Calc Release	Quick Calc Release	Quick Calc Release	Quick Calc Release
Cord length (m)	2	2	2	2
Frequency (Hz)	50~60H	50~60H	50~60H	50~60H



Model Number	RI 4537/82	GC 4541	GC 4543	GC 4544
Power (W)	1470	2400	2500	2600
Ready to use (min)	2	2	2	2
Steam output (g/min)	25	45	50	50
Steam boost (g)	180	200	210	220
Soleplate	SteamGlide	SteamGlide Plus	SteamGlide Plus	SteamGlide Plus
Water Tank (ml)	300	300	300	300
Automatic Shut-off	No	No	No	No
Drip stop	Yes	Yes	Yes	Yes
Ready light indicator	Yes	Yes	Yes	Yes
Integrated water spray	Yes	Yes	Yes	Yes
Eco Setting	Yes	Yes	Yes	Yes
Turbo setting	Yes	Yes	Yes	Yes
Calc Solution	Quick Calc Release	Quick Calc Release	Quick Calc Release	Quick Calc Release
Cord length (m)	2	2	2	2
Frequency (Hz)	50~60H	50~60H	50~60	50~60

Product Information

Product Matrix (Continue)



Model Number	GC 4552	GC 4554	GC 4556	GC 4558
Power (W)	2400	2500	2500	2600
Ready to use (min)	2	2	2	2
Steam output (g/min)	45	50	50	50
Steam boost (g)	210	220	220	230
Soleplate	SteamGlide	SteamGlide Plus	SteamGlide Plus	SteamGlide Plus
Water Tank (ml)	300	300	300	300
Automatic Shut-off	Yes	Yes	Yes	Yes
Drip stop	Yes	Yes	Yes	Yes
Ready light indicator	Yes	Yes	Yes	Yes
Integrated water spray	Yes	Yes	Yes	Yes
Eco Setting	Yes	Yes	Yes	Yes
Turbo setting	Yes	Yes	Yes	Yes
Calc Solution	Quick Calc Release	Quick Calc Release	Quick Calc Release	Quick Calc Release
Cord length (m)	2	2	2	2
Frequency (Hz)	50~60	50~60	50~60	50~60



Model Number	GC 4563	GC 4564	GC 4566	GC 4567
Power (W)	2600	2600	2600	2600
Ready to use (min)	2	2	2	2
Steam output (g/min)	50	50	50	50
Steam boost (g)	230	240	250	250
Soleplate	SteamGlide Advanced	SteamGlide Advanced	SteamGlide Advanced	SteamGlide Advanced
Water Tank (ml)	300	300	300	300
Automatic Shut-off	Yes	Yes	Yes	Yes
Drip stop	Yes	Yes	Yes	Yes
Ready light indicator	Yes	Yes	Yes	Yes
Integrated water spray	Yes	Yes	Yes	Yes
Eco Setting	Yes	Yes	Yes	Yes
Turbo setting	Yes	Yes	Yes	Yes
Calc Solution	Quick Calc Release	Quick Calc Release	Quick Calc Release	Quick Calc Release
Cord length (m)	2	2	2	2
Frequency (Hz)	50~60	50~60	50~60	50~60

Product Information

Product Matrix (Continue)



Model Number	GC 4901~4902	GC 4905	GC 4908~4909
Power (W)	2800	2400	3000
Ready to use (min)	2	2	2
Steam output (g/min)	50	55	55
Steam boost (g)	220	240	250
Soleplate	SteamGlide Elite	SteamGlide Elite	SteamGlide Elite
Water Tank (ml)	300	300	300
Automatic Shut-off	Yes	Yes	Yes
Drip stop	Yes	Yes	Yes
Ready light indicator	Yes	Yes	Yes
Integrated water spray	Yes	Yes	Yes
Eco Setting	Yes	Yes	Yes
Turbo setting	Yes	Yes	Yes
Calc Solution	Quick Calc Release	Quick Calc Release	Quick Calc Release
Cord length (m)	2.5	2.5	3
Frequency (Hz)	50~60	50~60	50~60

Product Information

Functions/ Features information

Easy to use

- Drip stop system
- Precision Steam Tip
- Safety auto shut off (for ASO version only)
- Robust heel rest
- Extra large filling hole

Fast crease removal

- Soleplate: SteamGlide, SteamGlide Plus, SteamGlide Advance & SteamGlide Elite
- Power: 2400 W ~ 3000 W
- Continuous steam output: 45g ~ 55 g/min
- Steam boost: 180 g ~ 250 g
- Spray feature
- Vertical Steam

Drip Stop

- The Water Tank Bottom has a Valve that is Controlled by a bimetal disc on the Soleplate. Water is only released into Steam Chamber via the Tank Valve when the Soleplate temperature Is high enough. When the Soleplate temperature is too low, the Tank Valve is closed. This prevent water from dripping onto garment.

Product size & weight

- Product dimension (W x H x L)
130 x 154 x 320 mm
- Weight of Iron: 1.552Kg

Water Advice

- In case you live in an area with hard water, (eg: water hardness more than 8dGH), it is Recommended to use a mixture of 50% tap water And 50% demineralized water.

Soleplate

- Soleplate is the best Philips Soleplate for Steam Iron. It has great scratch resistance, glides excellent and it is easy to clean.

Vertical Steam

- This features a steam boost in vertical position to Remove wrinkles in hanging garments

Steam boost

- The steam boost helps to remove stubborn wrinkles.

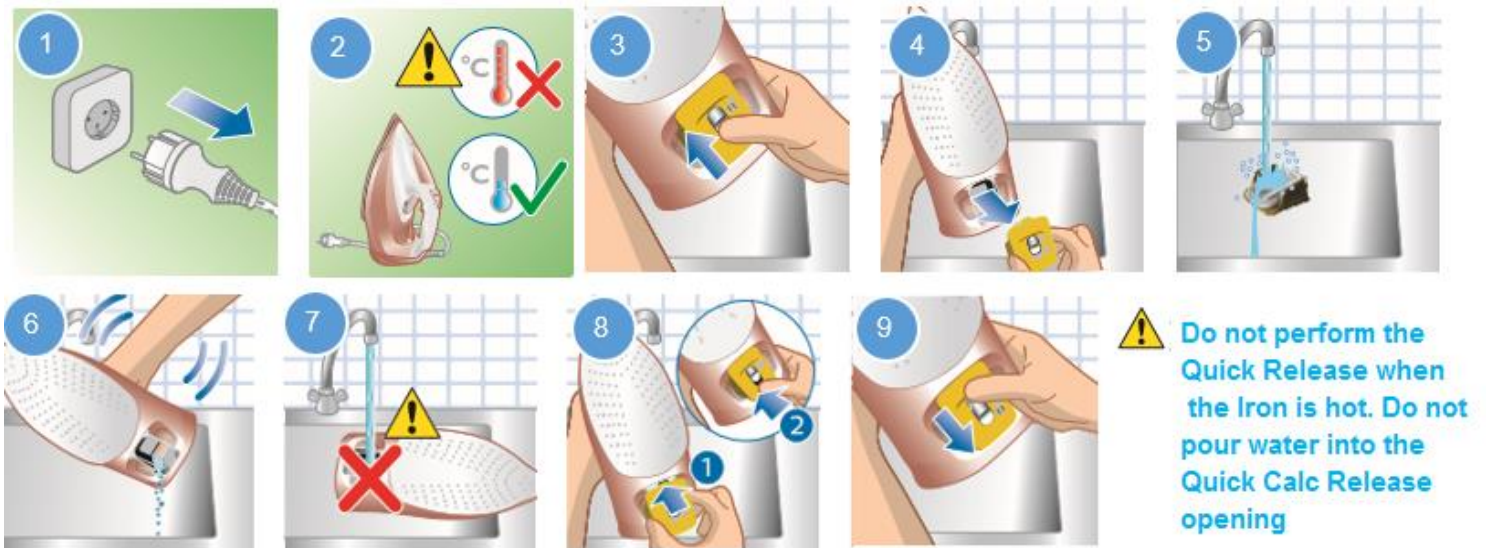
Electronic Safety Shut Off

- The power to the heater is cut off when the Iron has been motionless. The ASO lights starts blinking when the iron is moved. It is automatically switched on.

Troubleshooting

Problem	Possible root cause	Solution
No heating	Soleplate	Exchange Cover and Soleplate Mtd Assy & Mains Cord, apply Heat Sink Paste to Live and Neutral wire.
	Mains Cord	Exchange Mains Cord, apply Heat Sink Paste to Live and Neutral wire.
	ASO (for ASO version)	Exchange ASO
Water leaking	Water Tank Assy	Exchange Water Tank Assy
	Soleplate	Exchange Cover and Soleplate Mtd Assy & Mains Cord, apply Heat Sink Paste to Live and Neutral wire.
	Calc Collector Assy	Exchange Calc Collector Assy
Filling Door jammed/ can not close or open/ bounce up	Inlay Assy	Exchange Inlay Assy
Too less steam (< 45 g/min)	Soleplate full of scale	Refer to descaling instruction stated below
No Steam	Soleplate	Exchange Cover and Soleplate Mtd Assy & Mains Cord, apply Heat Sink Paste to Live and Neutral wire.
No spray	Water Tank Assy	Exchange Water Tank Assy
Backplate damaged/ cracked	Backplate Assy	Exchange Backplate Assy & Mains Cord, apply Heat Sink Paste to Live and Neutral wire.

Descaling Instruction:



Disassembly Instruction

Before dismantling :



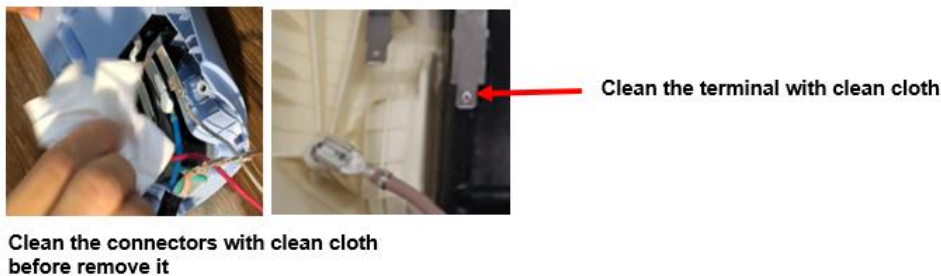
Ensure the plug is disconnected from the mains and Soleplate is not hot.

Tool to use: Screw driver – 1x Flat Head, 1x Philips Cross Head Recess no. 2, 1x T15, clean cloth

1. Unscrew A1 Screw with screw driver (Philips Cross Head Recess no. 2) from **Backplate 2K**"2".
2. Remove Deco Plate by pulling it out horizontally.
Caution: Once Deco Plate removed from **Backplate 2K**, reassemble Pilot Lamp Cover, misplace of this part is not orderable.
3. Open up the Filling Door, remove the Inlay Sticker. (Note : Sticker to be reused)
4. Remove Tank Seal.
5. Unscrew T1 Screw with screw driver (T15) from Inlay Assy.
6. Remove **Inlay Assy**"5" with screw driver (Flat Head) from the back end by placing the Screw driver between Inlay Assy & Housing, lift the screw driver upwards slowly until you hear (3x) click sound.
7. Remove Thermostat Dial.
8. Remove Bullet & Spring.
9. Unscrew A2 Screw with screw driver (Philips Cross Head Recess no. 2) from Clamping Plate.
10. Unscrew A3 Screw with screw driver (Philips Cross Head Recess no. 2) from Housing & Cover.
11. Remove **ASO**"1" (handle ASO with care – for ASO version only).
12. Remove **Water Tank Assy**"7" from **Cover and Soleplate Mtd Assy**"4 ".
13. Remove Thermostat Bush from Cover and Soleplate Mtd Assy.
14. Disassemble Lamp Assy by pressing the tab of Quick Connector and pull out from Frame Connect



15. Disassemble **Mains Cord**"6". Before removing Mains Cord, remove the Heat Sink Paste from the connectors with clean cloth. Press the tab of Quick Connector on Mains Cord and pull it out from Frame Connector.



16. Remove **Calc Collector Assy**"3" from bottom of Cover.

Reassembly Instruction

1. Assemble the **Calc Collector Assy**"3" to Cover.
2. Assemble Swivel to **Backplate 2K**"2".
3. Insert **Mains Cord**"6" (connectors side) to Swivel.

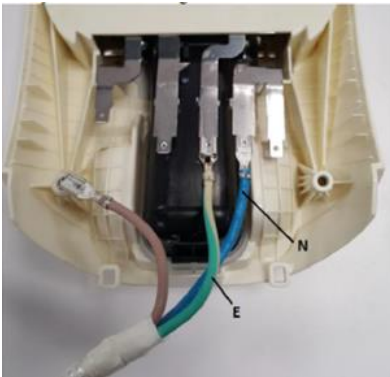


4. Connect **Mains Cord**"6" N & E wires to designated Frame Conncters as shown below.

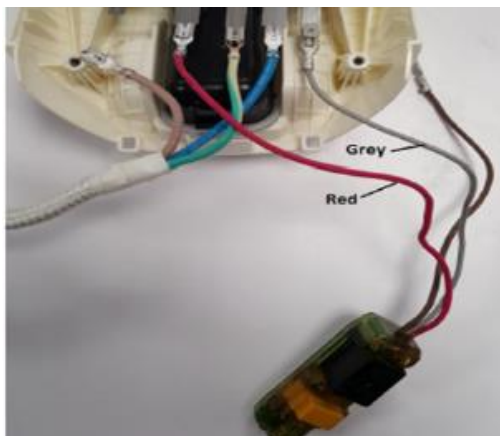
Cautions: - Due to high wattage of the iron, only specified Mains Cord must be used.

- Should there be any damage observed on the Mains Cord, it must be replaced.

- To replace Mains Cord once it is disassembled in the course of repair.

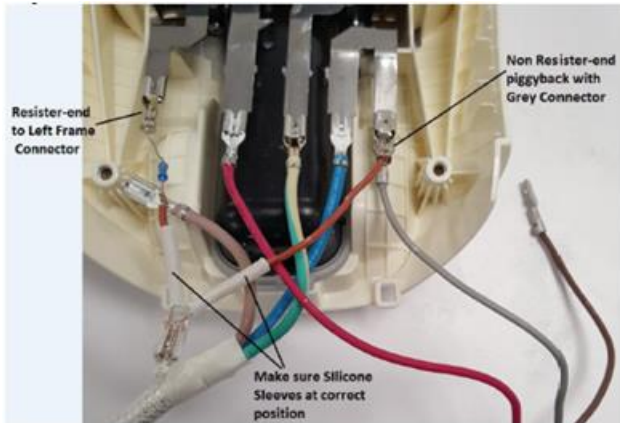


5. Connect **ASO**"1" Red and Grey wires to designated Frame Connectors as shown below (for ASO version only).

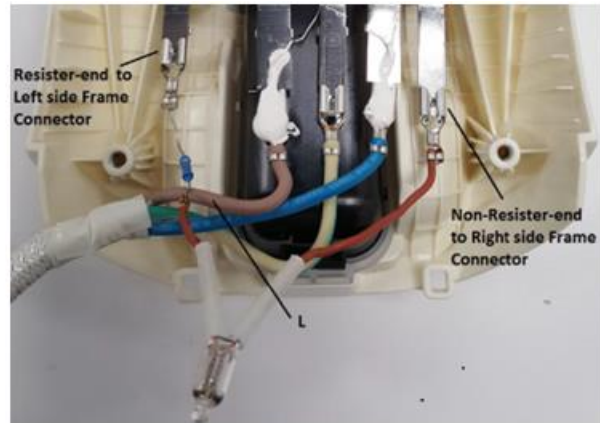


6. Connect Lamp Assy to Frame Connectors as shown below.

Note: When Silicone Sleeve are used, make sure it is in correct position covering exposed wire.

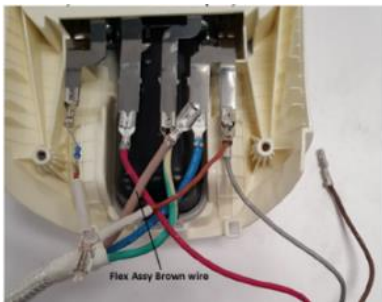


ASO Version



Non-ASO version

7. Shift **Mains Cord** "6" Brown wire in between Lamp Assy wires as shown below (for ASO version only).



8. Assemble Thermostat Bush to **Cover and Soleplate Mtd Assy** "4".
9. Place **Water Tank Assy** "7" on top of **Cover and Soleplate Mtd Assy** "4".
10. Fasten A3 Screw with Screw driver (Philips Cross Head recess no. 2) between Housing & Cover.

Reassemble Spring to Bullet before mount it back to Tank Top as shown in blue circle below.



11. Assemble Thermostat Dial.

12. Fold in **ASO**“1” to nest onto housing rib structure as shown below (for ASO version only).



13. Assemble **Inlay Assy**“5” to Housing (keep ASO Red, Brown and Grey wires at the right side of the Swivel saddle)

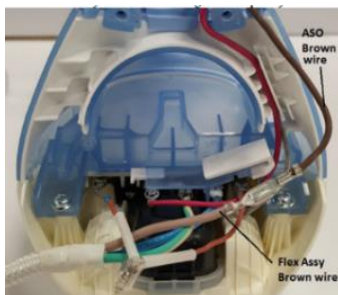
14. Fasten T1 Screw with Screw driver (T15) to Inlay Assy then paste the Inlay Sticker over T1 screw area, close the Filling Door.

15. Assemble Tank Seal.

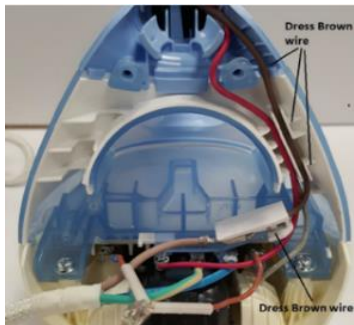
16. Dress **ASO**“1” Grey wire follow by Red wire as shown below (for ASO version only).



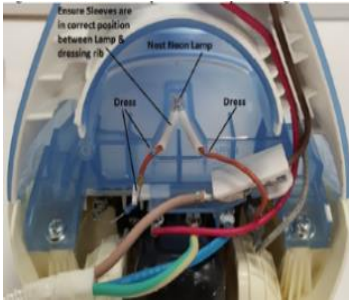
17. Connect **ASO**“1” & **Mains Cord**“6” brown wire through the Lamp Assy Connection Loop as shown below. (for ASO version only)



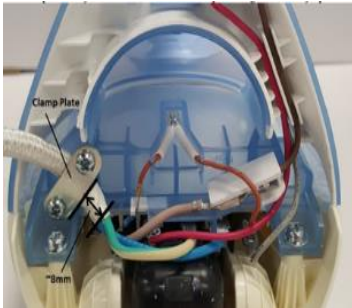
18. Dress Brown wire on Housing rib as shown below (for ASO version only).



19. Fold in Lamp Assy and nest Neon Lamp inside pocket as shown below. Dress wires, ensuring the Silicone Sleeves (where applicable) are held in place between Lamp and dressing rib.



20. Fasten A2 Screw with Screw driver (Philips Cross Head recess no.2) from Clamping Plate to Housing.

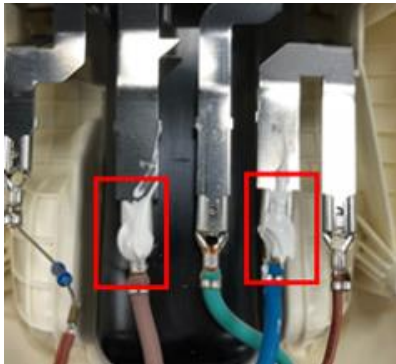


Notes: **Mains Cord**"6" with ~ 8mm distance from Clamping Plate edge to Mains Cord tape as shown above.

21. Dress **Mains Cord**"6" up to the Swivel Saddle.
22. Assemble Deco Plate to Tank Top.
23. Assemble **Backplate 2K**"2".
24. Fasten A1 Screw with Screw driver (Philips Cross Head recess no. 2) to **Backplate 2K**"2".

Cautions: ⚠

- before fastening screw, relocate the screw with first thread. Once done fasten the screw.
- Do not drop, hit or knock the ASO (for ASO version only).
- Ensure there is click sound after Connector to Terminal engage. Refer to wiring diagram for detail.
- Take note of live part (red & blue wire) must apply with **Heat Sink Paste** after wire dressing on area as shown.



Notes: Heat Sink Paste – **Dow Corning 340 Heat Sink Compound** to be used.

Service Lists

POS.	Description	GC4532/20	GC4533/37	GC4535/20	GC4535/20
		EEU	RUSSIA	IBERIA	RUSSIA
		8894 532 20300	8894 533 37870	8894 535 20180	8894 535 20870
1	ASO	NA	NA	NA	NA
2	BACKPLATE 2K	4239 022 73921	4239 022 74051	4239 022 74091	4239 022 74091
3	CALC COLLECTOR ASSY	4239 022 73941	4239 022 73941	4239 022 73941	4239 022 73941
4	COVER & SOLEPLATE MTD ASSY	4239 022 75531	4239 022 75451	4239 022 75551	4239 022 75461
5	INLAY ASSY	4239 022 74231	4239 022 74241	4239 022 74201	4239 022 74201
6	MAINS CORD	4239 022 73971	4239 022 73971	4239 022 73981	4239 022 73981
7	WATER TANK ASSY	4239 022 74341	4239 022 74371	4239 022 74421	4239 022 74421

POS.	Description	GC4537/70	GC4537/70	GC4541/20	GC4542/40
		IBERIA	RUSSIA	EEU	RUSSIA
		8894 537 70180	8894 537 70870	8894 541 20300	8894 542 40870
1	ASO	NA	NA	NA	NA
2	BACKPLATE 2K	4239 022 74061	4239 022 74061	4239 022 73921	4239 022 74131
3	CALC COLLECTOR ASSY	4239 022 73941	4239 022 73941	4239 022 73941	4239 022 73941
4	COVER & SOLEPLATE MTD ASSY	4239 022 75531	4239 022 75451	4239 022 74011	4239 022 75441
5	INLAY ASSY	4239 022 74251	4239 022 74251	4239 022 73951	4239 022 74271
6	MAINS CORD	4239 022 73971	4239 022 73971	4239 022 73971	4239 022 73981
7	WATER TANK ASSY	4239 022 74401	4239 022 74401	4239 022 73991	4239 022 74461

POS.	Description	GC4543/30	GC4543/30	GC4544/80	GC4544/80
		IBERIA	RUSSIA	IBERIA	SINGAPORE EXP
		8894 543 30180	8894 543 30870	8894 544 80180	8894 544 80500
1	ASO	NA	NA	NA	NA
2	BACKPLATE 2K	4239 022 74121	4239 022 74121	4239 022 74071	4239 022 74071
3	CALC COLLECTOR ASSY	4239 022 73941	4239 022 73941	4239 022 73941	4239 022 73941
4	COVER & SOLEPLATE MTD ASSY	4239 022 75521	4239 022 75441	4239 022 75521	4239 022 75521
5	INLAY ASSY	4239 022 74171	4239 022 74171	4239 022 74281	4239 022 74281
6	MAINS CORD	4239 022 73981	4239 022 73981	4239 022 73981	4239 022 74321
7	WATER TANK ASSY	4239 022 74381	4239 022 74381	4239 022 74511	4239 022 74511

Service Lists

POS.	Description	GC4555/80	GC4556/20	GC4556/20	GC4558/20
		RUSSIA	ITALY	RUSSIA	RUSSIA
		8894 555 80870	8894 556 20380	8894 556 20870	8894 558 20870
1	ASO	4239 022 73911	4239 022 73911	4239 022 73911	4239 022 73911
2	BACKPLATE 2K	4239 022 74071	4239 022 73921	4239 022 73921	4239 022 74101
3	CALC COLLECTOR ASSY	4239 022 73941	4239 022 73941	4239 022 73941	4239 022 73941
4	COVER & SOLEPLATE MTD ASSY	4239 022 74011	4239 022 75521	4239 022 75441	4239 022 75491
5	INLAY ASSY	4239 022 74191	4239 022 74181	4239 022 74181	4239 022 74211
6	MAINS CORD	4239 022 73971	4239 022 73981	4239 022 73981	4239 022 73981
7	WATER TANK ASSY	4239 022 74411	4239 022 74511	4239 022 74391	4239 022 74431

POS.	Description	GC4560/07	GC4563/30	GC4563/30	GC4564/20
		RUSSIA	IBERIA	RUSSIA	IBERIA
		8894 560 07870	8894 563 30180	8894 563 30870	8894 564 20180
1	ASO	4239 022 73911	4239 022 73911	4239 022 73911	4239 022 73911
2	BACKPLATE 2K	4239 022 74081	4239 022 74031	4239 022 74031	4239 022 73931
3	CALC COLLECTOR ASSY	4239 022 73941	4239 022 73941	4239 022 73941	4239 022 73941
4	COVER & SOLEPLATE MTD ASSY	4239 022 75501	4239 022 75541	4239 022 75471	4239 022 75511
5	INLAY ASSY	4239 022 74261	4239 022 74151	4239 022 74151	4239 022 73961
6	MAINS CORD	4239 022 73941	4239 022 74301	4239 022 74301	4239 022 73981
7	WATER TANK ASSY	4239 022 74451	4239 022 74351	4239 022 74351	4239 022 74001

POS.	Description	GC4564/20	GC4566/80	GC4567/80	GC4901/10
		EEU	RUSSIA	IBERIA	IBERIA
		8894 564 20300	8894 566 80870	8894 567 80180	8894 901 10180
1	ASO	4239 022 73911	4239 022 73911	4239 022 73911	4239 022 75211
2	BACKPLATE 2K	4239 022 73931	4239 022 74111	4239 022 74041	4239 022 75221
3	CALC COLLECTOR ASSY	4239 022 73941	4239 022 73941	4239 022 73941	4239 022 73941
4	COVER & SOLEPLATE MTD ASSY	4239 022 74021	4239 022 75481	4239 022 75541	4239 022 75391
5	INLAY ASSY	4239 022 73961	4239 022 74221	4239 022 74161	4239 022 75271
6	MAINS CORD	4239 022 73981	4239 022 73981	4239 022 74301	4239 022 75321
7	WATER TANK ASSY	4239 022 74001	4239 022 74401	4239 022 74361	4239 022 75341

Service Lists

POS.	Description	GC4901/10	GC4902/20	GC4902/20	GC4905/40
		RUSSIA	IBERIA	RUSSIA	IBERIA
		8894 901 10870	8894 902 20180	8894 902 20870	8894 905 40180
1	ASO	4239 022 75211	4239 022 75211	4239 022 75211	4239 022 75211
2	BACKPLATE 2K	4239 022 75221	4239 022 73921	4239 022 73921	4239 022 75241
3	CALC COLLECTOR ASSY	4239 022 73941	4239 022 73941	4239 022 73941	4239 022 73941
4	COVER & SOLEPLATE MTD ASSY	4239 022 75391	4239 022 75401	4239 022 75401	4239 022 75411
5	INLAY ASSY	4239 022 75271	4239 022 75281	4239 022 75281	4239 022 75291
6	MAINS CORD	4239 022 75321	4239 022 75321	4239 022 75321	4239 022 75321
7	WATER TANK ASSY	4239 022 75341	4239 022 75351	4239 022 75351	4239 022 75361

POS.	Description	GC4905/40	GC4908/80	GC4909/60	GC4564/20
		RUSSIA	RUSSIA	RUSSIA	EEU
		8894 905 40870	8894 908 80870	8894 909 60870	889 4564 20400
1	ASO	4239 022 75211	4239 022 75211	4239 022 75211	4239 022 73911
2	BACKPLATE 2K	4239 022 75241	4239 022 75251	4239 022 75261	4239 022 73931
3	CALC COLLECTOR ASSY	4239 022 73941	4239 022 73941	4239 022 73941	4239 022 73941
4	COVER & SOLEPLATE MTD ASSY	4239 022 75411	4239 022 75421	4239 022 75411	4239 022 75511
5	INLAY ASSY	4239 022 75291	4239 022 75301	4239 022 75311	4239 022 73961
6	MAINS CORD	4239 022 75321	4239 022 75331	4239 022 75331	4239 022 73981
7	WATER TANK ASSY	4239 022 75361	4239 022 75371	4239 022 75381	4239 022 74001

POS.	Description	GC4532/20	GC4533/30	GC4535/20	GC4537/70
		EEU	EEU	EEU	EEU
		889 4532 20400	889 4533 30400	889 4535 20400	889 4537 70400
1	ASO	NA	NA	NA	NA
2	BACKPLATE 2K	4239 022 73921	4239 022 74051	4239 022 74091	4239 022 74061
3	CALC COLLECTOR ASSY	4239 022 73941	4239 022 73941	4239 022 73941	4239 022 73941
4	COVER & SOLEPLATE MTD ASSY	4239 022 75451	4239 022 75451	4239 022 75461	4239 022 75451
5	INLAY ASSY	4239 022 74231	4239 022 74241	4239 022 74201	4239 022 74251
6	MAINS CORD	4239 022 73971	4239 022 73971	4239 022 73981	4239 022 73971
7	WATER TANK ASSY	4239 022 74341	4239 022 74371	4239 022 74421	4239 022 74401

Service Lists

POS.	Description	GC4537/80	GC4541/20	GC4543/30	GC4544/80
		EEU 889 4537 80400	EEU 889 4541 20400	EEU 889 4543 30400	EEU 889 4544 80400
1	ASO	NA	NA	NA	NA
2	BACKPLATE 2K	4239 022 74071	4239 022 73921	4239 022 74121	4239 022 74071
3	CALC COLLECTOR ASSY	4239 022 73941	4239 022 73941	4239 022 73941	4239 022 73941
4	COVER & SOLEPLATE MTD ASSY	4239 022 75451	4239 022 74011	4239 022 75441	4239 022 75441
5	INLAY ASSY	4239 022 74281	4239 022 73951	4239 022 74171	4239 022 74281
6	MAINS CORD	4239 022 73971	4239 022 73971	4239 022 73981	4239 022 73981
7	WATER TANK ASSY	4239 022 74471	4239 022 73991	4239 022 74381	4239 022 74511

POS.	Description	GC4556/20	GC4558/20	GC4552/00	GC4554/40
		EEU 889 4556 20400	EEU 889 4558 20400	EEU 889 4552 00400	EEU 889 4554 40400
1	ASO	4239 022 73911	4239 022 73911	4239 022 73911	4239 022 73911
2	BACKPLATE 2K	4239 022 73921	4239 022 74101	4239 022 74081	4239 022 74131
3	CALC COLLECTOR ASSY	4239 022 73941	4239 022 73941	4239 022 73941	4239 022 73941
4	COVER & SOLEPLATE MTD ASSY	4239 022 75441	4239 022 75491	4239 022 74011	4239 022 75411
5	INLAY ASSY	4239 022 74181	4239 022 74211	4239 022 74261	4239 022 74291
6	MAINS CORD	4239 022 73981	4239 022 73981	4239 022 73981	4239 022 73981
7	WATER TANK ASSY	4239 022 74391	4239 022 74431	4239 022 75581	4239 022 74501

POS.	Description	GC4554/40	GC4558/26	GC4537/86	GC4532/26
		Iberia 889 4554 40180	MEA 889 4558 26600	MEA 889 4537 86600	MEA 889 4532 26600
1	ASO	4239 022 73911	4239 022 73911	-	-
2	BACKPLATE 2K	4239 022 74131	4239 022 74101	4239 022 74071	4239 022 73921
3	CALC COLLECTOR ASSY	4239 022 73941	4239 022 73941	4239 022 73941	4239 022 73941
4	COVER & SOLEPLATE MTD ASSY	4239 022 74011	4239 022 75491	4239 022 75531	4239 022 75531
5	INLAY ASSY	4239 022 74291	4239 022 74211	4239 022 74281	4239 022 74231
6	MAINS CORD	4239 022 73981	4239 022 74331	4239 022 74331	4239 022 74331
7	WATER TANK ASSY	4239 022 74501	4239 022 74431	4239 022 74471	4239 022 74341

Service Lists

POS.	Description	GC4563/36	GC4554/40	GC4535/20	GC4537/76
		Singapore	Thailand	Thailand	Singapore
		889 4563 36500	889 4554 40640	889 4535 20640	889 4537 76500
1	ASO	4239 022 73911	4239 022 73911	-	-
2	BACKPLATE 2K	4239 022 74031	4239 022 74131	4239 022 74091	4239 022 74061
3	CALC COLLECTOR ASSY	4239 022 73941	4239 022 73941	4239 022 73941	4239 022 73941
4	COVER & SOLEPLATE MTD ASSY	4239 022 75471	4239 022 75521	4239 022 75551	4239 022 75451
5	INLAY ASSY	4239 022 74151	4239 022 74291	4239 022 74201	4239 022 74251
6	MAINS CORD	4239 022 74311	4239 022 75591	4239 022 75601	4239 022 74331
7	WATER TANK ASSY	4239 022 74351	4239 022 74501	4239 022 74421	4239 022 74401

POS.	Description	GC4563/36	GC4554/40	GC4535/20	GC4537/76
		Singapore	Thailand	Thailand	Singapore
		889 4563 36500	889 4554 40640	889 4535 20640	889 4537 76500
1	ASO	4239 022 73911	4239 022 73911	-	-
2	BACKPLATE 2K	4239 022 74031	4239 022 74131	4239 022 74091	4239 022 74061
3	CALC COLLECTOR ASSY	4239 022 73941	4239 022 73941	4239 022 73941	4239 022 73941
4	COVER & SOLEPLATE MTD ASSY	4239 022 75471	4239 022 75521	4239 022 75551	4239 022 75451
5	INLAY ASSY	4239 022 74151	4239 022 74291	4239 022 74201	4239 022 74251
6	MAINS CORD	4239 022 74311	4239 022 75591	4239 022 75601	4239 022 74331
7	WATER TANK ASSY	4239 022 74351	4239 022 74501	4239 022 74421	4239 022 74401

POS.	Description	GC4533/36	GC4535/26	GC4566/86	RI4537/82
		Singapore	Singapore	Singapore	Brazil
		889 4533 36500	889 4535 26500	889 4566 86500	886 4537 82240
1	ASO	-	-	4239 022 73911	-
2	BACKPLATE 2K	4239 022 74051	4239 022 74371	4239 022 74111	4239 022 74071
3	CALC COLLECTOR ASSY	4239 022 73941	4239 022 73941	4239 022 73941	4239 022 73941
4	COVER & SOLEPLATE MTD ASSY	4239 022 75451	4239 022 75461	4239 022 75481	4239 022 75631
5	INLAY ASSY	4239 022 74241	4239 022 74201	4239 022 74221	4239 022 74281
6	MAINS CORD	4239 022 74331	4239 022 74331	4239 022 74321	4239 022 75641
7	WATER TANK ASSY	4239 022 74371	4239 022 74421	4239 022 74441	4239 022 75651

Service Lists

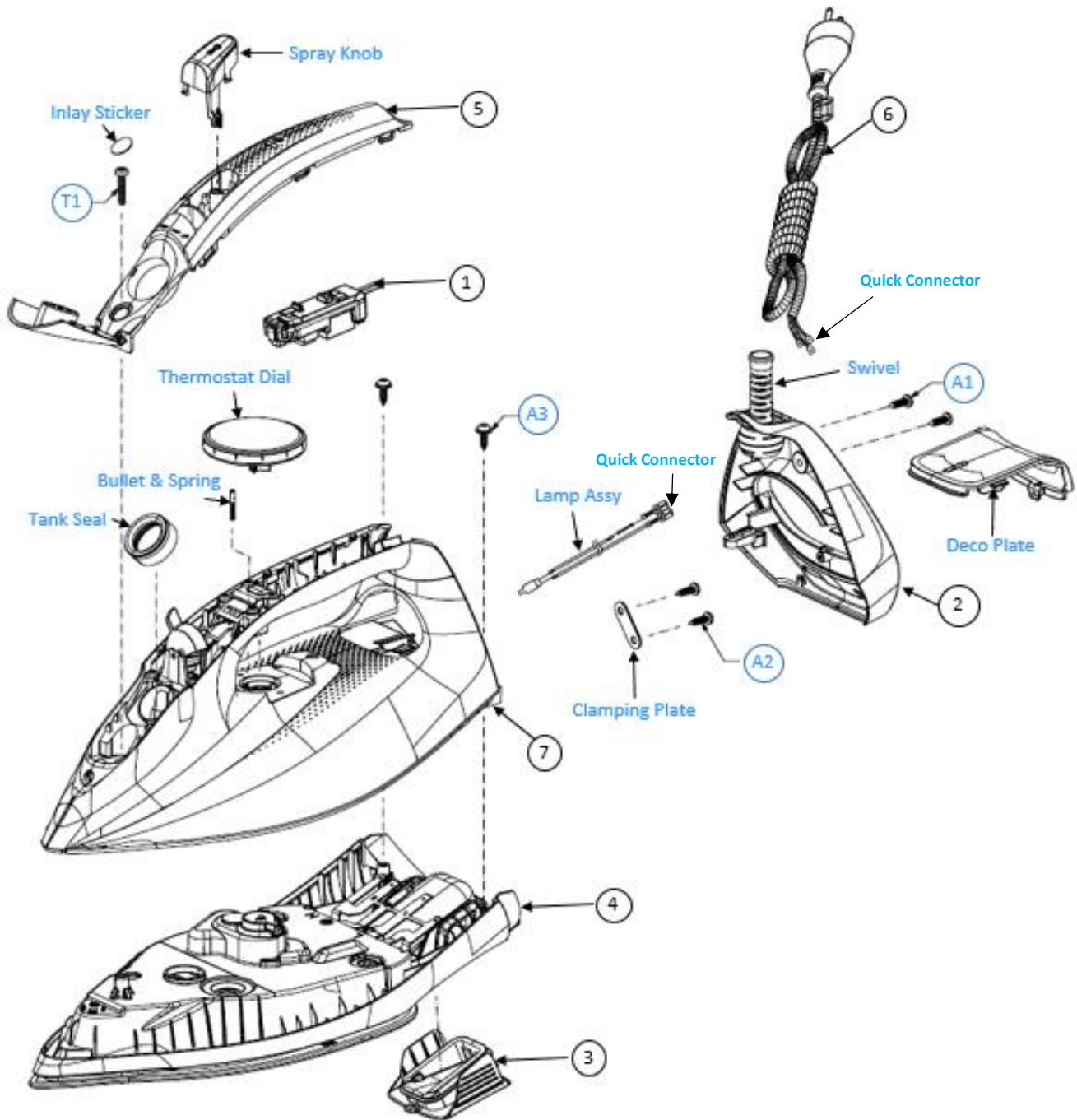
POS.	Description	RI4537/84	GC4563/30	GC4566/80	GC4567/80
		Brazil	EEU	EEU	EEU
		886 4537 84240	889 4563 30400	889 4566 80400	889 4567 80400
1	ASO	-	4239 022 73911	4239 022 73911	4239 022 73911
2	BACKPLATE 2K	4239 022 74071	4239 022 74031	4239 022 74111	4239 022 74041
3	CALC COLLECTOR ASSY	4239 022 73941	4239 022 73941	4239 022 73941	4239 022 73941
4	COVER & SOLEPLATE MTD ASSY	4239 022 75451	4239 022 75471	4239 022 75481	4239 022 75471
5	INLAY ASSY	4239 022 74281	4239 022 74151	4239 022 74221	4239 022 74161
6	MAINS CORD	4239 022 75611	4239 022 74301	4239 022 73981	4239 022 74301
7	WATER TANK ASSY	4239 022 75621	4239 022 74351	4239 022 74441	4239 022 74361

POS.	Description	GC4901/10	GC4902/20	GC4902/26	GC4905/40
		EEU	EEU	MEA	EEU
		889 4901 10400	889 4902 20400	889 4902 26600	889 4905 40400
1	ASO	4239 022 75211	4239 022 75211	4239 022 75211	4239 022 75211
2	BACKPLATE 2K	4239 022 75221	4239 022 73921	4239 022 73921	4239 022 75241
3	CALC COLLECTOR ASSY	4239 022 73941	4239 022 73941	4239 022 73941	4239 022 73941
4	COVER & SOLEPLATE MTD ASSY	4239 022 75391	4239 022 75401	4239 022 75401	4239 022 75411
5	INLAY ASSY	4239 022 75271	4239 022 76011	4239 022 76011	4239 022 75291
6	MAINS CORD	4239 022 75321	4239 022 75321	4239 022 76021	4239 022 75321
7	WATER TANK ASSY	4239 022 75341	4239 022 75351	4239 022 75351	4239 022 75361

POS.	Description	GC4908/80	GC4909/60	GC4909/66
		EEU	WEU	MEA
		889 4908 80400	889 4909 60190	889 4909 66600
1	ASO	4239 022 75211	4239 022 75211	4239 022 75211
2	BACKPLATE 2K	4239 022 75251	4239 022 75261	4239 022 75261
3	CALC COLLECTOR ASSY	4239 022 73941	4239 022 73941	4239 022 73941
4	COVER & SOLEPLATE MTD ASSY	4239 022 75421	4239 022 75991	4239 022 75411
5	INLAY ASSY	4239 022 75301	4239 022 75311	4239 022 75311
6	MAINS CORD	4239 022 75331	4239 022 75331	4239 022 75331
7	WATER TANK ASSY	4239 022 75371	4239 022 76001	4239 022 75381

Service Lists

Exploded view



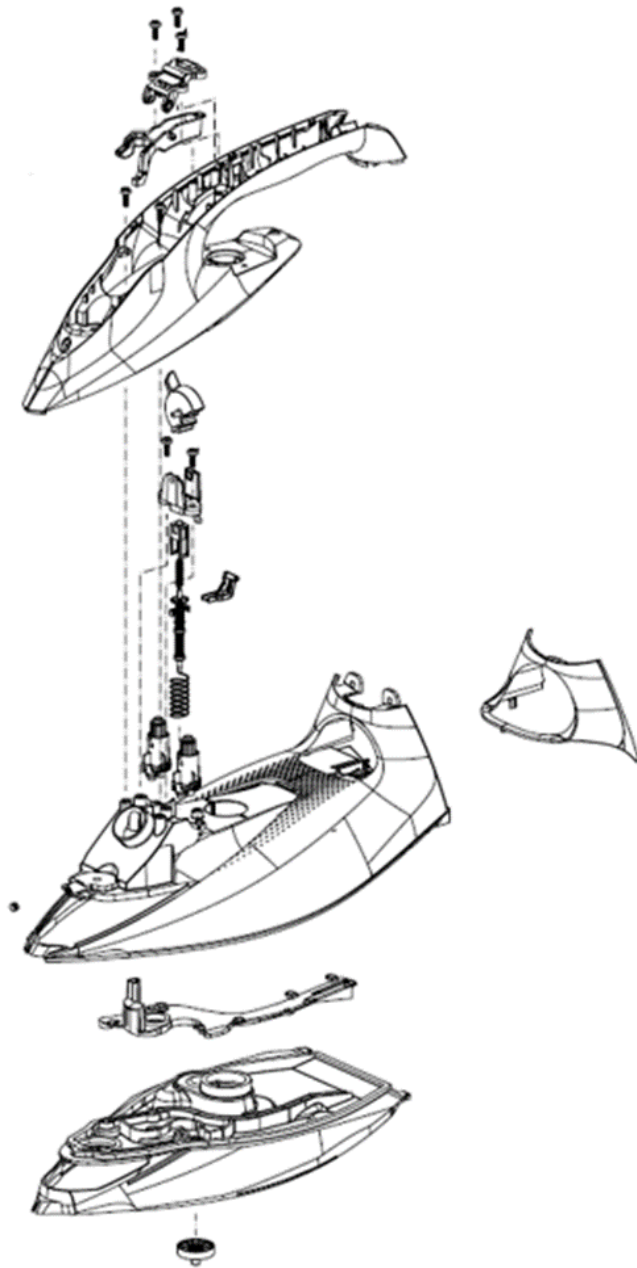
Notes:

Pos. 1 to 7 are service parts

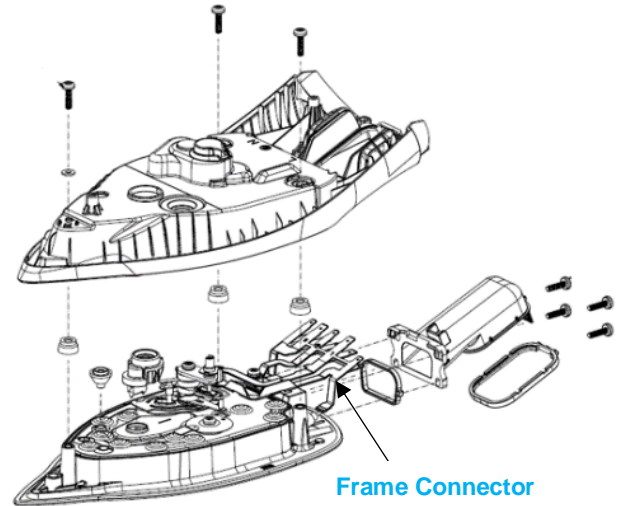
Scale: Not to scale

Published by Philips Consumer Lifestyle

Water Tank Assy "7"



Cover and Soleplate Mounted Assy "4"



Notes:

The above 2 diagrams are for reference only.

Do not dismantle, as quality control of these key components is the key factor to the performance of the appliance.

Scale: Not to scale

Revision History

Version	Records	Author	Date
0	New release	Chong Yoke Lan	16-Apr-2018
1	Remove repeat info wiring diagram. Added new versions: 889453220300; 889453337870; 889453520180; 889453520870; 889453770180; 889453770870; 889454240870; 889454330180; 889454330870; 889454480180; 889454480500; 889455580870; 889455620380; 889455620870; 889455820870; 889456007870; 889456330180; 889456330870; 889456420180; 889456680870; 889456780180	Chong Yoke Lan	12-Jun-2018
2	Update product matrix & added new versions: 889490110180; 889490110870; 889490220180; 889490220870; 889490540180; 889490540870; 889490880870; 889490960870; 889456420400; 889453220400; 889453330400; 889453520400; 889453770400; 889453780400; 889454120400; 889454330400; 889454480400; 889455620400; 889455820400; 889455200400; 889455440400	Chong Yoke Lan	28-Jul-2018
3	Updated Pos. 4 part list for 889455440400 Update product matrix & added new versions: 889455440180; 889455826600; 889453786600; 889453226600; 889456336500; 889455440640; 889453520640; 889453776500; 889453336500; 889453526500; 889456686500; 886453782240; 886453784240	Chong Yoke Lan	12-Oct-2018
4	Added following new versions: 889456330400; 889456680400; 889456780400; 889490110400; 889490220400; 889490226600; 889490540400; 889490880400; 889490960190; 889490966600	Chong Yoke Lan	20-Dec-2018