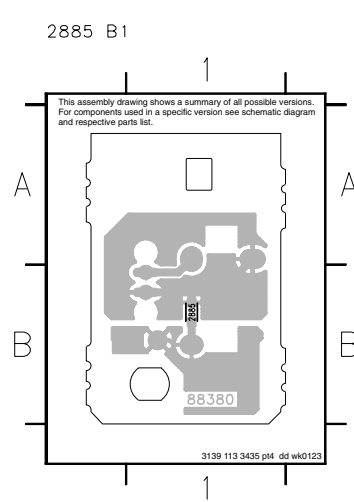
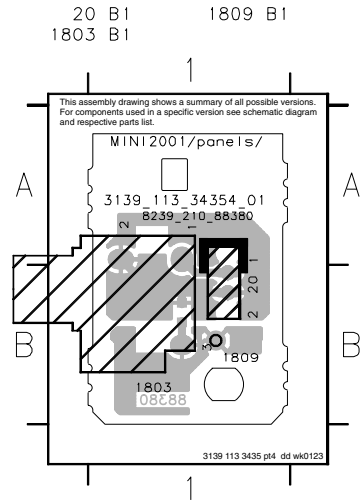
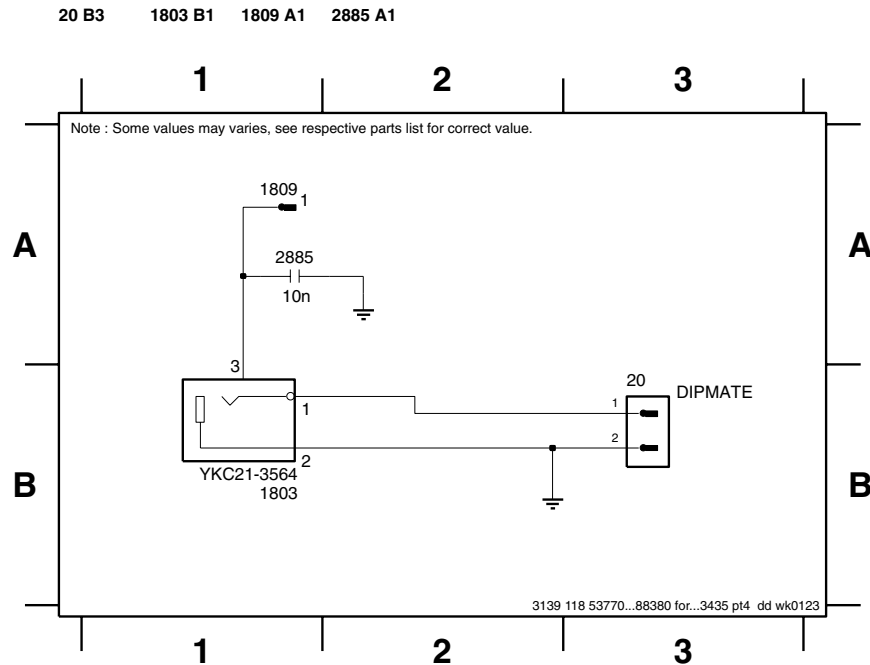


VIDEO OUT PART - COMPONENT & CHIP LAYOUTS



CIRCUIT DIAGRAM - VIDEO OUT PART



ELECTRICAL PARTS LIST - AF9 BOARD

MISCELLANEOUS

1206	4822 267 11039	Flex Socket 11 Pin Vert.
1401	4822 265 11553	Flex Socket 19 Pin Vert.
1402	4822 267 11039	Flex Socket 11 Pin Vert.
1501	4822 265 20553	Cinch Socket 2P
1503	4822 267 10733	Flex Socket 4 Pin Vert. /21/21M
1520	4822 265 11515	Flex Socket 8 Pin Vert.
1523	4822 265 10981	Flex Socket 15 Pin Vert.
1531	4822 267 10953	Flex Socket 7 Pin Vert.
1603	4822 267 10733	Flex Socket 4 Pin Vert.

2546	4822 121 43856	4,7nF 5% 250V
2547	5322 126 11579	3,3nF 10% 63V
2548	5322 126 11579	3,3nF 10% 63V
2565	4822 121 43856	4,7nF 5% 250V
2567	3198 016 31020	1nF 25V
2568	3198 016 31020	1nF 25V
2589	4822 121 42408	220nF 5% 63V
2590	4822 121 42408	220nF 5% 63V
2591	5322 121 42661	330nF 5% 63V
2592	5322 121 42661	330nF 5% 63V
2593	4822 121 51252	470nF 5% 63V
2594	4822 121 51252	470nF 5% 63V
2601	3198 016 31020	1nF 25V
2602	3198 016 31020	1nF 25V
2603	4822 124 81151	22µF 50V
2604	4822 124 81151	22µF 50V
2605	4822 122 31765	100pF 2% 63V
2606	4822 122 31765	100pF 2% 63V
2607	4822 126 13881	470pF 5% 50V
2608	4822 126 13881	470pF 5% 50V
2609	4822 126 14508	180pF 5% 50V
2610	4822 126 14508	180pF 5% 50V
2611	4822 124 81151	22µF 50V
2612	4822 124 81151	22µF 50V
2621	4822 124 81151	22µF 50V
2622	4822 122 31765	100pF 2% 63V
2623	4822 124 40433	47µF 20% 25V
2624	3198 017 42230	22nF 50V
2625	4822 124 40207	100µF 20% 25V
2626	4822 124 40769	4,7µF 20% 100V
2641	3198 016 31020	1nF 25V
2642	3198 016 31020	1nF 25V
2653	4822 122 31765	100pF 2% 63V
2654	4822 122 31765	100pF 2% 63V
2669	4822 126 14305	100nF 10% 16V
2681	4822 124 40433	47µF 20% 25V
2682	4822 122 33752	15pF 5% 50V
2683	4822 126 14305	100nF 10% 16V
2691	4822 122 31765	100pF 2% 63V
2707	4822 122 31765	100pF 2% 63V
2708	4822 122 31765	100pF 2% 63V
2771	4822 124 41407	0,47µF 20% 63V
2902	3198 017 44740	470nF 10V
2905	3198 017 42230	22nF 50V
2908	4822 126 14305	100nF 10% 16V
2922	4822 122 31765	100pF 2% 63V
2923	4822 121 51387	10nF 20% 16V

CAPACITORS

2201	4822 124 40207	100µF 20% 25V
2202	4822 124 81151	22µF 50V
2203	4822 124 40433	47µF 20% 25V
2204	4822 124 40196	220µF 20% 16V
2205	4822 126 14238	2,2nF 50V
2206	4822 126 14494	22nF 10% 25V
2207	4822 124 40433	47µF 20% 25V
2208	4822 126 13879	220nF +80/-20% 16V
2209	4822 124 41751	47µF 20% 50V
2210	4822 126 13879	220nF +80/-20% 16V
2401	4822 122 31765	100pF 2% 63V
2402	4822 122 31765	100pF 2% 63V
2403	4822 126 14305	100nF 10% 16V
2404	4822 126 14305	100nF 10% 16V
2501	4822 122 31765	100pF 2% 63V
2502	4822 122 31765	100pF 2% 63V
2503	4822 121 51252	470nF 5% 63V
2504	4822 121 51252	470nF 5% 63V
2505	4822 122 31765	100pF 2% 63V
2506	4822 122 31765	100pF 2% 63V
2507	4822 126 14305	100nF 10% 16V
2511	4822 121 51252	470nF 5% 63V
2512	4822 121 51252	470nF 5% 63V
2513	3198 016 31020	1nF 25V
2514	3198 016 31020	1nF 25V
2515	4822 122 31765	100pF 2% 63V
2516	4822 122 31765	100pF 2% 63V
2521	4822 126 14305	100nF 10% 16V
2522	4822 126 14305	100nF 10% 16V
2523	4822 122 31765	100pF 2% 63V
2524	4822 122 31765	100pF 2% 63V
2531	4822 124 40769	4,7µF 20% 100V
2532	4822 124 40769	4,7µF 20% 100V
2533	4822 122 31765	100pF 2% 63V
2534	4822 122 31765	100pF 2% 63V
2535	4822 124 40769	4,7µF 20% 100V
2536	4822 124 40769	4,7µF 20% 100V
2541	4822 124 41407	0,47µF 20% 63V
2542	4822 124 41407	0,47µF 20% 63V
2543	5322 126 11583	10nF 10% 50V
2544	5322 126 11583	10nF 10% 50V

2593	4822 121 51252	470nF 5% 63V
2594	4822 121 51252	470nF 5% 63V
2601	3198 016 31020	1nF 25V
2602	3198 016 31020	1nF 25V
2603	4822 124 81151	22µF 50V
2604	4822 124 81151	22µF 50V
2605	4822 122 31765	100pF 2% 63V
2606	4822 122 31765	100pF 2% 63V
2607	4822 126 13881	470pF 5% 50V
2608	4822 126 13881	470pF 5% 50V
2609	4822 126 14508	180pF 5% 50V
2610	4822 126 14508	180pF 5% 50V
2611	4822 124 81151	22µF 50V
2612	4822 124 81151	22µF 50V
2621	4822 124 81151	22µF 50V
2622	4822 122 31765	100pF 2% 63V
2623	4822 124 40433	47µF 20% 25V
2624	3198 017 42230	22nF 50V
2625	4822 124 40207	100µF 20% 25V
2626	4822 124 40769	4,7µF 20% 100V
2641	3198 016 31020	1nF 25V
2642	3198 016 31020	1nF 25V
2653	4822 122 31765	100pF 2% 63V
2654	4822 122 31765	100pF 2% 63V
2669	4822 126 14305	100nF 10% 16V
2681	4822 124 40433	47µF 20% 25V
2682	4822 122 33752	15pF 5% 50V
2683	4822 126 14305	100nF 10% 16V
2691	4822 122 31765	100pF 2% 63V
2707	4822 122 31765	100pF 2% 63V
2708	4822 122 31765	100pF 2% 63V
2771	4822 124 41407	0,47µF 20% 63V
2902	3198 017 44740	470nF 10V
2905	3198 017 42230	22nF 50V
2908	4822 126 14305	100nF 10% 16V
2922	4822 122 31765	100pF 2% 63V
2923	4822 121 51387	10nF 20% 16V

RESISTORS

3201	4822 117 12968	820R 5% 0,62W
3202	4822 051 30151	150R 5% 0,062W
3205	4822 116 52289	5k6 5% 0,5W

ELECTRICAL PARTS LIST - AF9 BOARD

RESISTORS

3401	4822 051 30471	470R 5% 0,062W	3622	4822 051 30103	10k 5% 0,062W
3402	4822 051 30471	470R 5% 0,062W	3623	4822 051 30102	1k 5% 0,062W
3403	4822 116 52175	100R 5% 0,5W	3624	4822 051 30562	5k6 5% 0,063W
3405	4822 051 30103	10k 5% 0,062W	3625	4822 051 30472	4k7 5% 0,062W
3408	4822 051 30103	10k 5% 0,062W	3626	4822 051 30472	4k7 5% 0,062W
3409	4822 051 30562	5k6 5% 0,063W	3627	4822 052 10109 Δ	10R 5% 0,33W
3412	4822 050 11002	1k 1% 0,4W	3628	4822 116 52283	4k7 5% 0,5W
3435	4822 050 11002	1k 1% 0,4W	3629	4822 051 30472	4k7 5% 0,062W
3436	4822 050 11002	1k 1% 0,4W	3631	4822 050 11002	1k 1% 0,4W
3501	4822 051 30472	4k7 5% 0,062W	3633	4822 051 30102	1k 5% 0,062W
3502	4822 051 30472	4k7 5% 0,062W	3634	4822 051 30562	5k6 5% 0,063W
3503	4822 051 30123	12k 5% 0,062W	3635	4822 051 30103	10k 5% 0,062W
3504	4822 051 30123	12k 5% 0,062W	3636	4822 051 30472	4k7 5% 0,062W
3505	4822 051 30153	15k 5% 0,062W	3637	4822 051 30103	10k 5% 0,062W
3506	4822 051 30153	15k 5% 0,062W	3638	4822 051 30472	4k7 5% 0,062W
3511	4822 117 12968	820R 5% 0,62W	3640	4822 116 52289	5k6 5% 0,5W
3512	4822 117 12968	820R 5% 0,62W	3644	4822 051 30102	1k 5% 0,062W
3513	4822 117 12903	1k8 1% 0,063W	3645	4822 051 30221	220R 5% 0,062W
3514	4822 117 12903	1k8 1% 0,063W	3646	4822 051 30221	220R 5% 0,062W
3521	4822 051 30102	1k 5% 0,062W	3651	4822 051 30102	1k 5% 0,062W
3522	4822 051 30102	1k 5% 0,062W	3652	4822 051 30102	1k 5% 0,062W
3525	4822 051 30471	470R 5% 0,062W	3653	4822 051 30102	1k 5% 0,062W
3526	4822 051 30471	470R 5% 0,062W	3654	4822 051 30102	1k 5% 0,062W
3531	4822 051 30152	1k5 5% 0,062W	3655	4822 051 30102	1k 5% 0,062W
3532	4822 051 30152	1k5 5% 0,062W	3656	4822 051 30102	1k 5% 0,062W
3533	4822 051 30273	27k 5% 0,062W	3657	4822 051 30102	1k 5% 0,062W
3534	4822 051 30273	27k 5% 0,062W	3658	4822 051 30102	1k 5% 0,062W
3543	4822 117 12925	47k 1% 0,063W	3683	4822 051 30154	150k 5% 0,062W
3544	4822 117 12925	47k 1% 0,063W	3684	4822 051 30154	150k 5% 0,062W
3545	4822 051 30562	5k6 5% 0,063W	3686	4822 117 12864	82k 5% 0,6W
3546	4822 051 30562	5k6 5% 0,063W	3687	4822 117 11817	1k2 1% 1/16W
3547	4822 051 30103	10k 5% 0,062W	3688	4822 051 30391	390R 5% 0,062W
3548	4822 051 30103	10k 5% 0,062W	3689	4822 051 30151	150R 5% 0,062W
3549	4822 051 30183	18k 5% 0,062W	3692	4822 051 30334	330k 5% 0,062W
3550	4822 051 30183	18k 5% 0,062W	3694	4822 051 30222	2k2 5% 0,062W
3591	4822 117 12902	8k2 1% 0,063W	3707	4822 051 30102	1k 5% 0,062W
3592	4822 117 12902	8k2 1% 0,063W	3708	4822 051 30102	1k 5% 0,062W
3593	4822 051 30562	5k6 5% 0,063W	3711	4822 051 30562	5k6 5% 0,063W
3594	4822 051 30562	5k6 5% 0,063W	3820	4822 116 52176	10R 5% 0,5W
3601	4822 116 52238	12k 5% 0,5W	3821	4822 052 10109 Δ	10R 5% 0,33W
3602	4822 116 52238	12k 5% 0,5W	4100	4822 051 30008	0R Jumper 0603
3607	4822 051 30682	6k8 5% 0,062W	4101	4822 051 30008	0R Jumper 0603
3608	4822 116 83961	6k8 5%	4104	4822 051 30008	0R Jumper 0603
3609	4822 051 30273	27k 5% 0,062W	4108	4822 051 30008	0R Jumper 0603
3610	4822 051 30273	27k 5% 0,062W	4110	4822 051 30008	0R Jumper 0603
3611	4822 051 30479	47R 5% 0,062W	4111	4822 051 30008	0R Jumper 0603
3612	4822 051 30479	47R 5% 0,062W	4112	4822 051 30008	0R Jumper 0603
3613	4822 051 30102	1k 5% 0,062W	4113	4822 051 30008	0R Jumper 0603
3614	4822 051 30102	1k 5% 0,062W	4114	4822 051 30008	0R Jumper 0603
3615	4822 051 30339	33R 5% 0,062W	4115	4822 051 30008	0R Jumper 0603
3616	4822 051 30339	33R 5% 0,062W	4116	4822 051 30008	0R Jumper 0603
3621	4822 051 30103	10k 5% 0,062W	4119	4822 051 30008	0R Jumper 0603

ELECTRICAL PARTS LIST - AF9 BOARD

4122	4822 051 30008	0R Jumper 0603	7401	4822 130 41246	BC327-25
4124	4822 051 30008	0R Jumper 0603	7402	4822 130 60511	BC847B
4125	4822 051 30008	0R Jumper 0603	7403	4822 209 17345	M62320FP
4126	4822 051 30008	0R Jumper 0603	7501	9322 150 74668	TDA7468D
4127	4822 051 30008	0R Jumper 0603	7601	4822 209 31378	NJM4556MB
4128	4822 051 30008	0R Jumper 0603	7603	4822 130 42804	BC817-25
4130	4822 051 30008	0R Jumper 0603	7604	4822 130 42804	BC817-25
4132	4822 051 30008	0R Jumper 0603	7621	4822 130 60511	BC847B
4133	4822 051 30008	0R Jumper 0603	7622	4822 130 60373	BC857B
4134	4822 051 30008	0R Jumper 0603	7623	4822 130 60511	BC847B
4135	4822 051 30008	0R Jumper 0603	7635	4822 130 60373	BC857B
4137	4822 051 30008	0R Jumper 0603	7636	4822 130 60511	BC847B
4138	4822 051 30008	0R Jumper 0603	7651	4822 130 42804	BC817-25
4139	4822 051 30008	0R Jumper 0603	7652	4822 130 42804	BC817-25
4141	4822 051 30008	0R Jumper 0603	7653	4822 130 42804	BC817-25
4142	4822 051 30008	0R Jumper 0603	7654	4822 130 42804	BC817-25
4143	4822 051 30008	0R Jumper 0603	7681	4822 130 60373	BC857B
4144	4822 051 30008	0R Jumper 0603	7682	4822 130 60511	BC847B
4145	4822 051 30008	0R Jumper 0603	7803	4822 130 60511	BC847B
4146	4822 051 30008	0R Jumper 0603			
4147	4822 051 30008	0R Jumper 0603			
4148	4822 051 30008	0R Jumper 0603			
4151	4822 051 30008	0R Jumper 0603			
4152	4822 051 30008	0R Jumper 0603			
4153	4822 051 30008	0R Jumper 0603			
4501	4822 051 30008	0R Jumper 0603 /22/30/34/37			
4641	4822 051 30008	0R Jumper 0603			
4642	4822 051 30008	0R Jumper 0603			
4811	4822 051 30008	0R Jumper 0603			
4812	4822 051 30008	0R Jumper 0603			
4903	4822 051 30008	0R Jumper 0603			
4904	4822 051 30008	0R Jumper 0603 /22/30/34/37			
4908	4822 051 30008	0R Jumper 0603			
4913	4822 051 30008	0R Jumper 0603			
4920	4822 051 30008	0R Jumper 0603			

Note: Only the parts mentioned in this list are normal service spare parts.

COILS & FILTERS

5621	4822 157 62552	Coil 2,2μH 5%
------	----------------	---------------

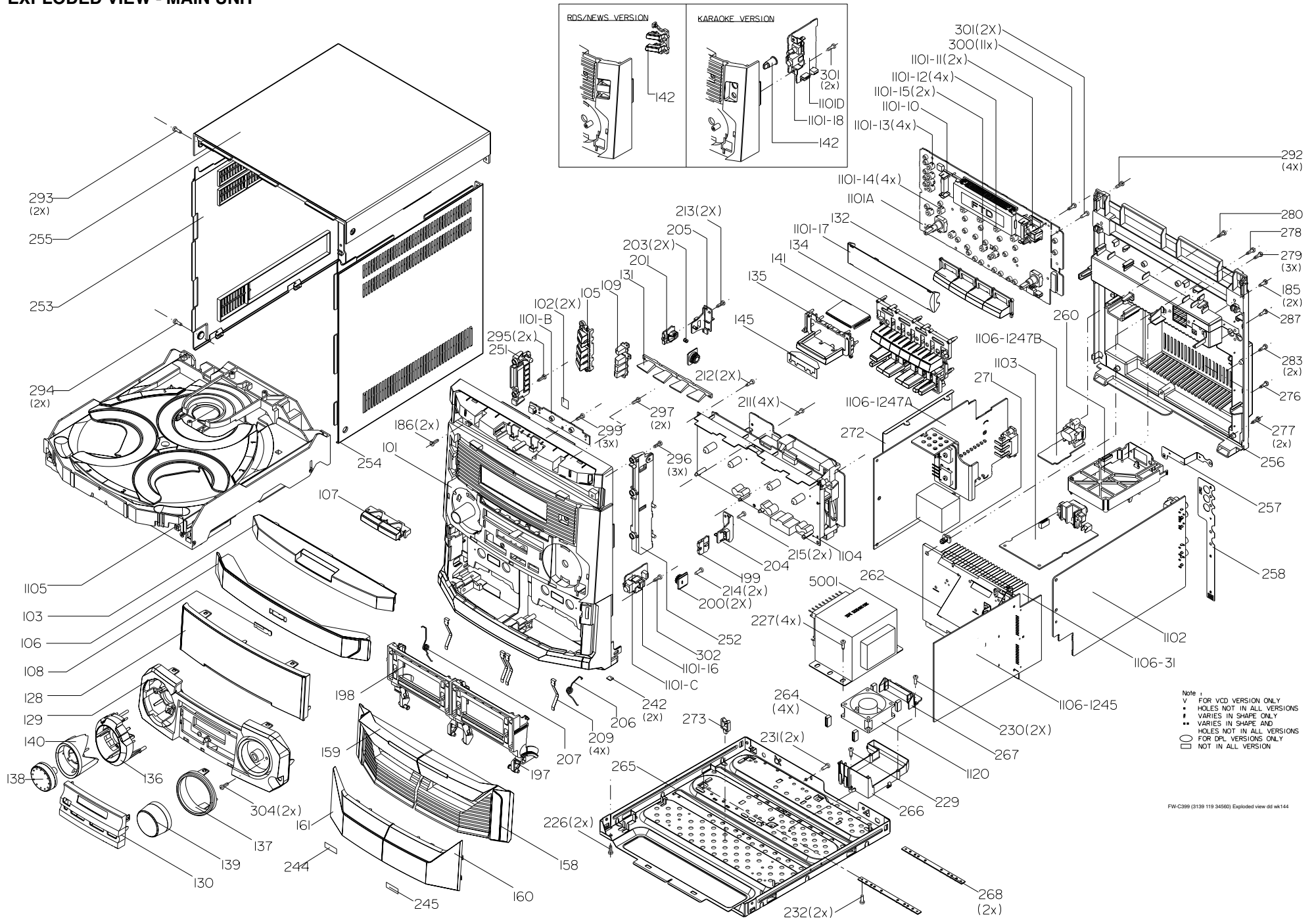
DIODES

6201	4822 130 30621	1N4148
6202	4822 130 30862	BZX79-B9V1
6205	4822 130 61219	BZX79-B10
6206	4822 130 31878	1N4003G
6207	4822 130 31878	1N4003G
6208	4822 130 31878	1N4003G
6401	4822 130 30621	1N4148
6774	4822 130 30621	1N4148

TRANSISTORS & INTEGRATED CIRCUITS

7201	4822 130 60511	BC847B
7202	4822 209 72042	L78L05ACZ

EXPLODED VIEW - MAIN UNIT



Note:
 V FOR VCD VERSION ONLY
 * HOLES NOT IN ALL VERSIONS
 # VARIES IN SHAPE ONLY
 ** VARIES IN SHAPE AND HOLES NOT IN ALL VERSIONS
 ○ FOR DPL VERSIONS ONLY
 □ NOT IN ALL VERSION

MECHANICAL & ACCESSORIES PARTS LIST - MAIN UNIT**SCREW LISTS - MAIN UNIT**

101	3139 118 16480	Cabinet Front /21/21M	254	3139 114 74790	Panel Right Grey V2 /37	185	D3 x 12
101	3139 118 16580	Cabinet Front /22	255	3139 114 73590	Cover Top Grey /21/21M/22	186	D3 x 12
101	3139 118 16100	Cabinet Front /37	255	3139 114 74800	Cover Top Grey V2 /37	211	D3 x 12
103	3139 118 16110	Cover Front CDC	256	3139 114 73140	Panel Rear /21	212	D3 x 12
105	3139 118 16500	Button Set CDC LPS	256	3139 114 73880	Panel Rear /21M/22	213	D3 x 12
106	3139 118 16130	Cover Tray CDC	256	3139 114 74850	Panel Rear V2 /37	214	D3 x 12
107	3139 118 16140	Button Set Open/Close	271	3139 114 71010	Stopper Heat sink	215	D3 x 12
108	4822 454 13408	Badge Philips	350	3139 118 79070	Loudspeaker Box /21/21M/22	226	M3 x 6
128	3139 118 16490	Window Display /21/21M	350	3139 118 79080	Loudspeaker Box /37	227	M3 x 10
128	3139 118 16590	Window Display /22	351	4822 303 50063	FM Antenna /21/21M/22	229	M3 x 10
128	3139 118 16150	Window Display /37	351	4822 320 11094	FM Antenna /37	230	D3 x 10
129	3139 118 16160	Cover Front Display	356	3139 228 89680	Remote Control RC282432/01	231	M3 x 10
130	3139 118 16170	Cover Front Ornamental	384	2422 549 45067	AM Loop Antenna	232	M3 x 6
131	3139 114 71350	Light guide Source Select	385	2422 070 98151	△ Mains Cord /21/21M/22	276	M3 x 6
132	3139 118 16180	Button Set Source	385	2422 070 98152	△ Mains Cord /37	277	M3 x 10
134	3139 118 16190	Button Set Control & VCD	386	4822 263 21092	△ Adapter Plug /21	278	D3 x 16
135	3139 118 16200	Button Max	387	3139 115 21120	Instruction For Use /21/21M	279	D3 x 12
136	3139 118 16210	Button DSC/DBB/VEC/IS	387	3139 115 21220	Instruction For Use /22	280	D3 x 12
137	3139 118 16220	Ring Volume	387	3139 115 21070	Instruction For Use /37	283	D3 x 12
138	3139 118 16230	Knob Rotary	1120	4822 361 11161	Fan KD1206PTS3	287	D3 x 12
139	3139 118 13190	Knob Volume	1200	3139 110 35010	Flex Cable 7 Pin 34cm AD	292	D3 x 12
140	3139 114 71330	Light guide DSC/DBB/VEC/IS	1300	3139 110 35350	Flex Cable 11 Pin 22cm AD	293	D3 x 12
142	3139 114 74610	Knob Karaoke /21/21M	1400	3139 110 35110	Flex Cable 4 Pin 22cm AD	294	M3 x 10
142	3139 118 16600	Button Set RDS/News /22	1401	4822 320 12703	Flex Cable 7 Pin 14cm BD	295	D3 x 12
158	3139 118 16250	Cover Cassette Right	1402	3139 110 35100	Flex Cable 19 Pin 14cm AD	296	D3 x 12
159	3139 118 16260	Cover Cassette Left	1403	3139 110 34610	Flex Cable 11 Pin 18cm AD	297	D3 x 12
160	3139 118 13900	Lens Cassette Right	1500	3139 110 33960	Flex Cable 4 Pin 12cm BD	299	D3 x 12
161	3139 118 13890	Lens Cassette Left	1501	3139 110 33960	Flex Cable 4 Pin 12cm BD /21/21M	300	D3 x 12
197	3139 114 68630	Door Cassette Right ETF				301	D3 x 12
198	3139 114 68620	Door Cassette Left ETF	1600	3139 110 35050	Flex Cable 8 Pin 22cm AD	302	D3 x 12
			1700	4822 320 12752	Flex Cable 7 Pin 18cm AD	304	D3 x 12
199	4822 402 10621	Push-Catch					
200	4822 529 10322	Damper Assembly	1800	3139 110 35880	Flex Cable 15 Pin 18cm BD		
201	3139 114 68640	Push Catch Left	5001	3103 308 30700	△ Mains Transformer /21/21M		
203	4822 492 11344	Spring Compression	5001	3103 308 30690	△ Mains Transformer /22		
204	4822 402 11246	Bracket Right	5001	3103 308 30680	△ Mains Transformer /37		
205	4822 402 11245	Bracket Left					
206	3139 111 01380	Spring Torsion Right					
207	3139 111 01390	Spring Torsion Left					
209	4822 492 42787	Spring Cassette					
242	4822 462 40683	Foot Rubber (SQ)					
251	3139 114 70970	Bracket CDC Left					
252	3139 114 70980	Bracket CDC Right					
253	3139 114 73570	Panel Left Grey /21/21M/22					
253	3139 114 74780	Panel Left Grey V2 /37					
254	3139 114 73580	Panel Right Grey /21/21M/22					

Note: Only the parts mentioned in this list are normal service spare parts.