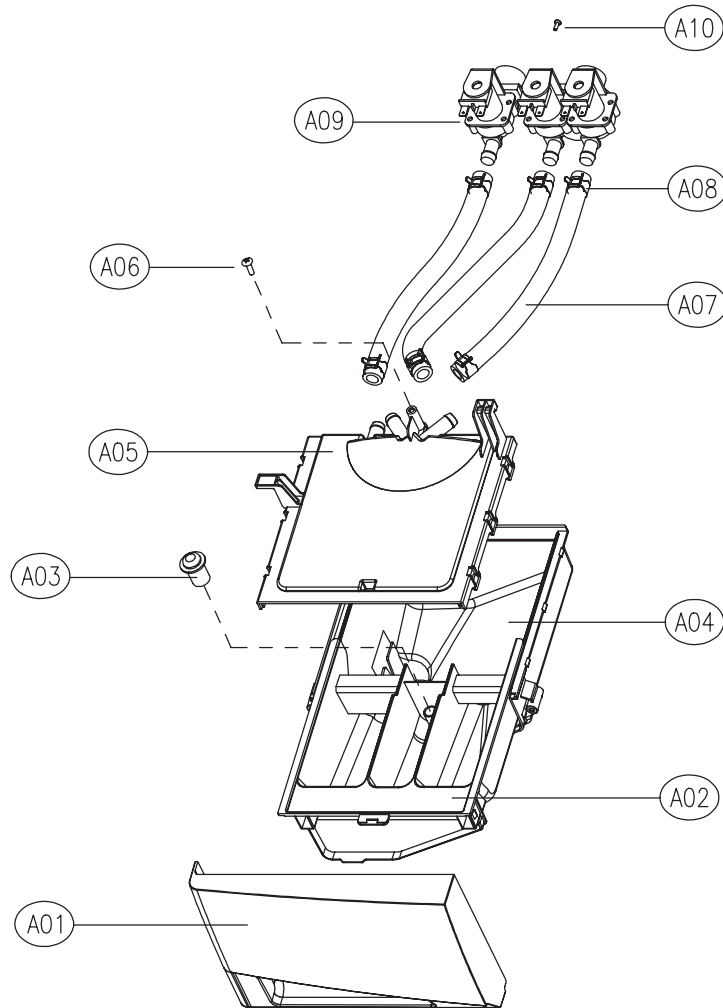


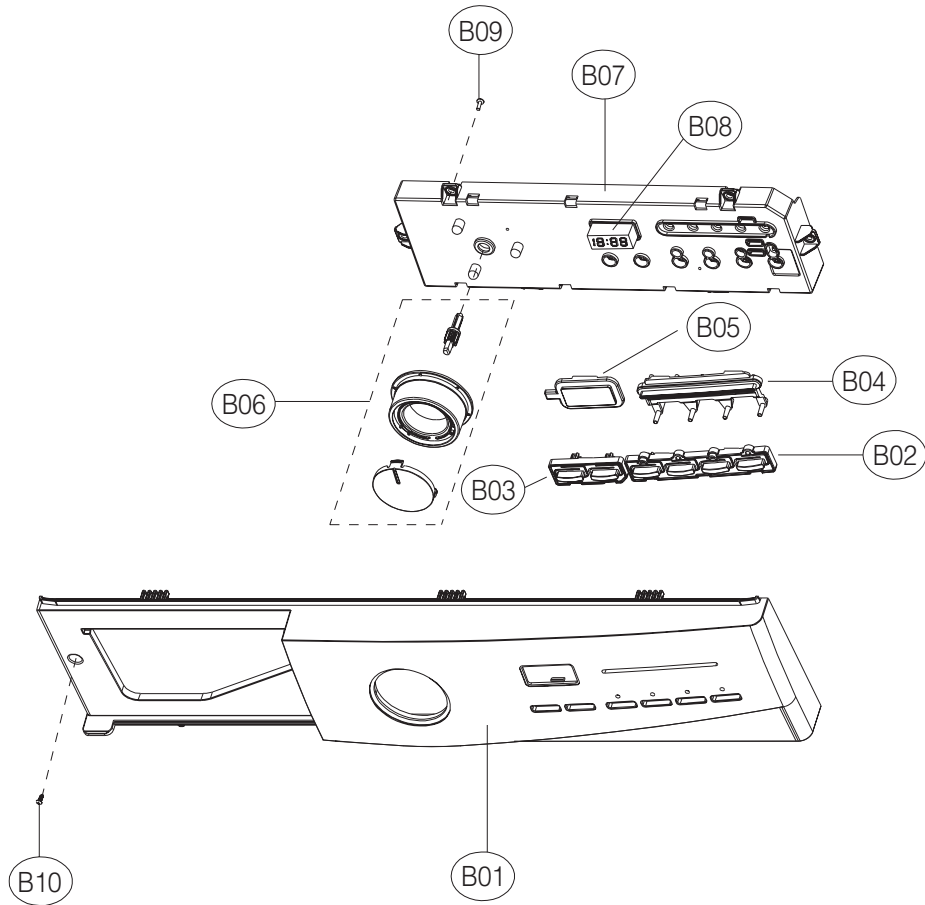
5. EXPLODE VIEW AND PARTS LIST

■ BOX INLET AS



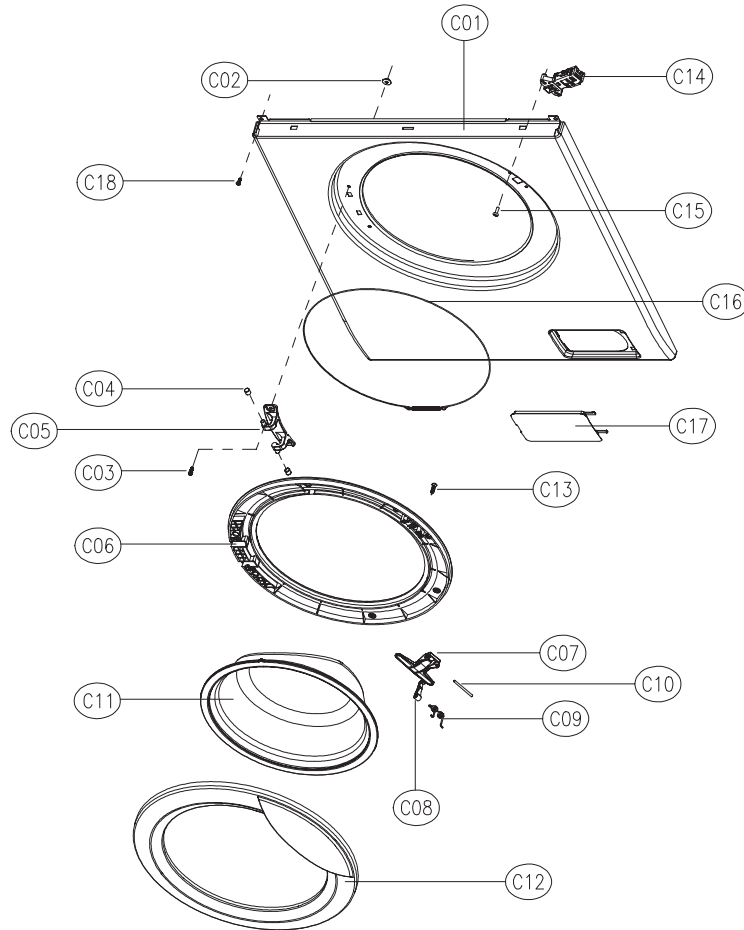
No.	PART NAME	PART CODE	SPECIFICATION	Q'TY	REMARK
A01	HANDLE CASE	36111TE00	HIPS	1	D-MU1031
A02	CASE DETERGENT	3611145800	PP	1	
A03	CAP SOFTENER	3610907800	PP	1	
A04	BOX INLET	3610527500	PP	1	
A05	NOZZLE AS	3618105700	NOZZLE TOP + NOZZLE UNDER	1	COLD ONLY
		3618105710			COLD+HOT
A06	SCREW TAPPING	7122401411	T2S TRS 4X14 MFZN	1	
A07	HOSE WATER SUPPLY	3613270900	EPDM ID=9.5 OD=14.5 L=215	2(1)	COLD(HOT)
A08	CLAMP HOSE	3611205800	ID=13.8 W=10.0 0.9T	4(2)	COLD(HOT)
A09	VALVE INLET	3615414910	220-240V 2-WAY NYLON/BACKET VDE	1	COLD
		3615414800	220-240V 1-WAY HOT PP-BACKET	1	HOT
A10	SCREW TAPTITE	7272400811	TT3 TRS 4X8 MFZN	2	

■ PANEL FRONT AS



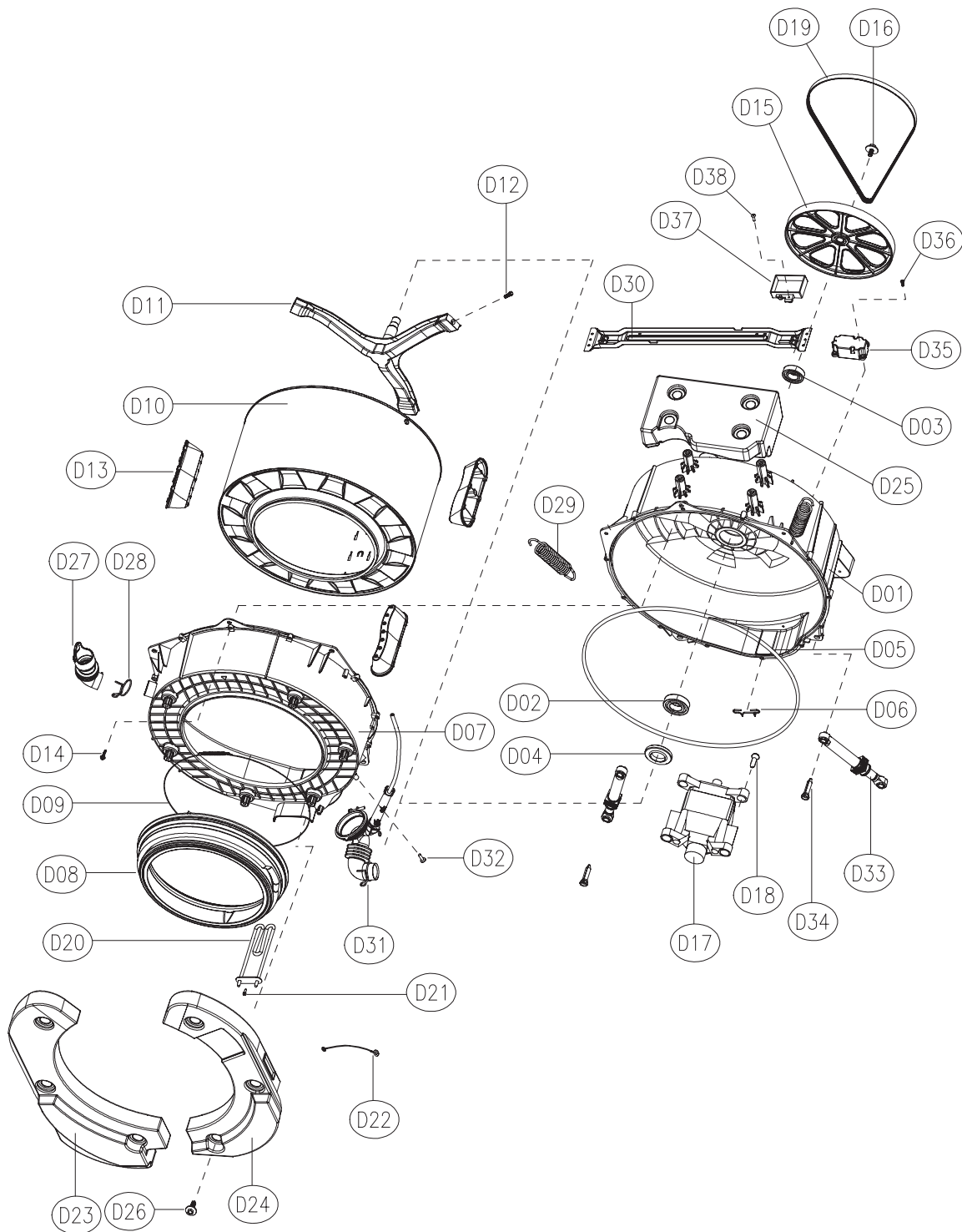
No.	PART NAME	PART CODE	SPECIFICATION	Q'TY	REMARK
B01	PANEL F	36142T1D00	HIPS	1	D-MU1031
B02	BUTTON SELECT	3616640100	HIPS	1	D-MU1031
B03	BUTTON RES	3616640000	HIPS	1	D-MU1031
B04	WINDOW LED	3615507800	ABS	1	D-MU1031
B05	WINDOW DISPLAY	3615507900	ABS	1	D-MU1031
B06	KNOB DIAL AS	3613408000	KNOB OUT,IN+DECO+SHAFT	1	D-MU1031
B07	PCB AS	PRPSSWC020	PCB DEFAULT AS	1	D-MU1031
		PRPSSWC021	PCB OPTION AS (COLD&NB)		
		PRPSSWC022	PCB OPTION AS (COLD&BB)		
		PRPSSWC023	PCB OPTION AS (DBL&NB)		
B08	LED 18:88	3616056400	LED 18:88	1	D-MU1031
B09	SCREW TAPPING	7122401611	T2S TRS 4x16 MFZN	6	D-MU1031
B10	SCREW TAPPING	7122401608	T2S TRS 4x16 SUS 430	2	D-MU1031

■ CABINET FRONT AS



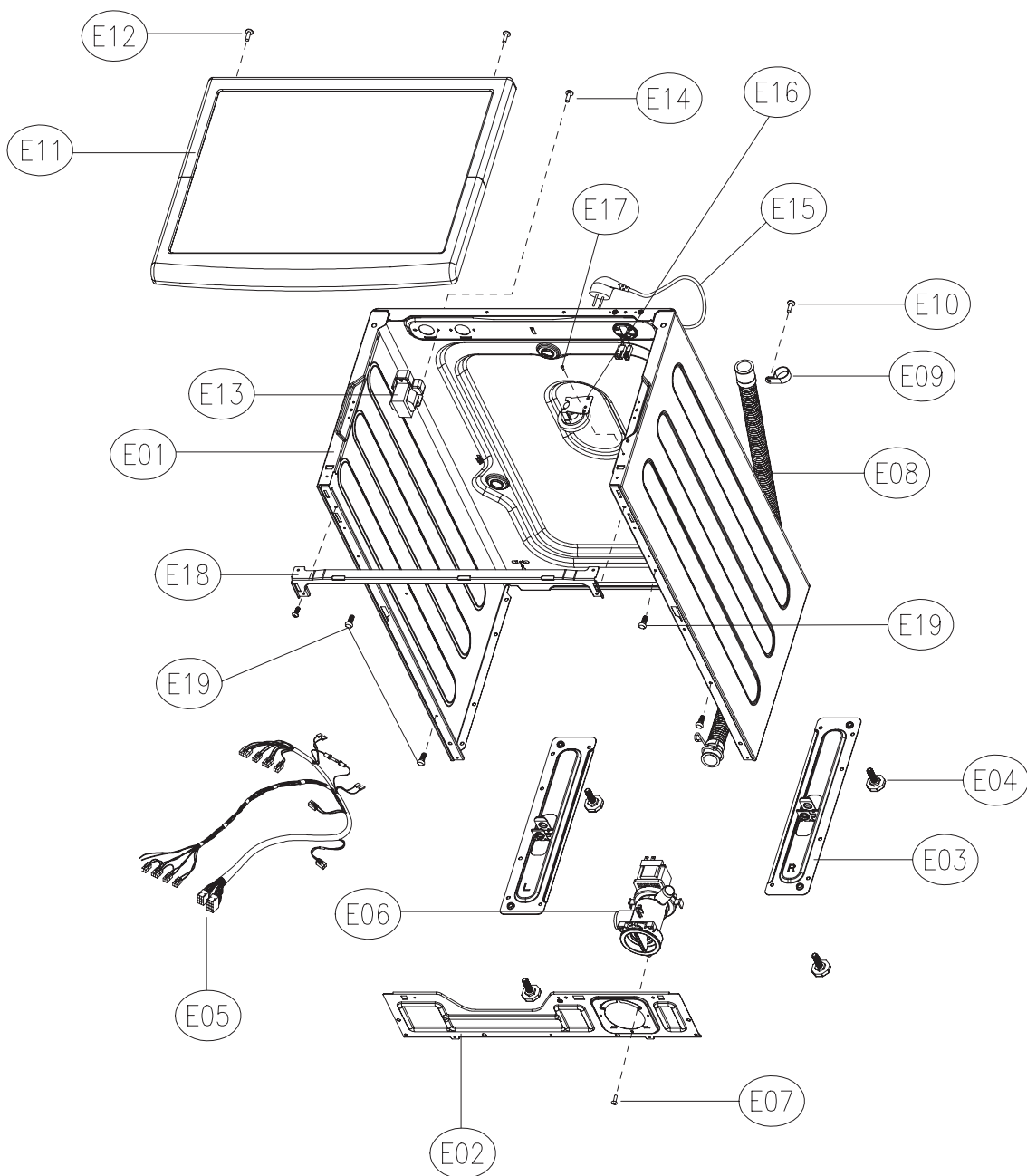
No.	PART NAME	PART CODE	SPECIFICATION	Q'TY	REMARK
C01	CABINET F AS	3610812810	PAINTING T=0.7	1	
C02	NUT HEX	7S627W50X1	NUT FLANGE M5X0.8P MFZN	2	
C03	SCREW TAPPING	3616051229	STS430 F/L BOLT(SE) 5*12	2	
C04	CAP HINGE DOOR	3610916500	POM	2	
C05	HINGE DOOR	3612903700	ALDC	1	
C06	FRAME DOOR I	3612208700	PP	1	
C07	HANDLE DOOR	3612610800	ABS	1	
C08	HOOK DOOR	3613101200	POM	1	
C09	SPRING HOOK	3615114600	SUS D1.4	1	
C10	PIN HANDLE	3618200200	SUS304, D3, L48	1	
C11	DOOR GLASS	361A110700	GLASS PI300	1	
C12	FRAME DOOR O	3612208600	HIPS	1	
C13	SCREW TAPPING	7115401629	T1 FLT 4X16 SUS	7	
C14	SWITCH DOOR LOCK	3619047100	DL-LC.BITRON_3P.250V16A.BI-METAL	1	
C15	SCREW TAPPING	7122401208	T2S TRS 4X12 SUS	2	
C16	CLAMP DOOR AS	3611204810	HSW3, D1.4	1	
C17	COVER PUMP	3611428500	HIPS	1	
C18	SCREW TAPPING	3616029950	TTS"S" HEX F/L 4*8	4	

■ TUB AS



No.	PART NAME	PART CODE	SPECIFICATION	Q'TY	REMARK
D01	TUB REAR AS	3618829900	TUB REAR(FRPP) + BEARING HOUSING(ALDC)	1	
D02	BEARING INNER	3616304700	6205ZZ SHENS	1	
D03	BEARING OUTER	3616304800	6204ZZ SHENS	1	
D04	WATER SEAL	361A600300	NBR	1	
D05	GASKET TUB	3612324100	PI=4.5, L=1650, EPDM	1	
D06	FIXTURE HEATER	3612009400	SUS, PI=2	1	
D07	TUB FRONT	3618829600	FRPP	1	
D08	GASKET	3612323500	EPDM	1	
D09	CLAMP GASKET AS	3611204520	HSW3	1	
D10	DRUM SUB AS	3617010400	SUS T=0.4	1	
D11	SPIDER AS	361A301000	SPIDER(ALDC-8) + SHAFT(SM45C)	1	
D12	SPECIAL BOLT	3616063000	STS430 M6*21 SI-LOCK	3	
D13	LIFTER WASH	361A401110	NANO	3	
D14	SPECIAL SCREW(TUB)	3616062700	SWRCH18A 5.6*30	12	
D15	PULLEY	3618433210	PA6+GF30%, SERRATION	1	
D16	SPECIAL BOLT AS(PULLEY)	3616063100	SWRCH10A M8*22 PW SI-LOCK	1	
D17	UNIT MOTOR UNIVERSAL	36189L5H00	SOYEA 2POLES 38T	1	
D18	SPECIAL SCREW(MOTOR)	3616062800	SWRCH18A 7.4*25.5	2	
D19	BELT V	3616591300	GATES 3PJ1134 BUTADIENE RUBBER	1	
D20	HEATER WASH	3612802460	220V~240V 1.8KW IRCA	1	D-MU1031
D21	THERMISTOR WASH	361AAAAB10	R25=1.704KΩ R80=11.981KΩ	1	
D22	HARNESS EARTH	3612794450	L=180	1	
D23	BALANCER WEIGHT L	3616109600	PP, INSERT 6.5KG	1	D-MU1031
D24	BALANCER WEIGHT R	3616109500	PP, INSERT 5KG	1	D-MU1031
D25	BALANCER WEIGHT TOP	3616108900	PP, INSERT 6.5KG	1	D-MU1031
D26	SPECIAL SCREW(BALANCER)	3616062900	SWRCH18A 8*31 PW	6	
D27	HOSE INLET	3613271600	EPDM	1	
D28	CLAMP HOSE I	3611201400	HSW3, D=2.6, MFZN D=38	1	
D29	SPRING SUSPENSION	3615116100	K=0.39, L=125	2	
D30	FRAME TOP	3612208500	SGCC T=1.2		
D31	HOSE DRAIN AS	3613272300	HOSE DRAIN(EPDM) + AIR TRAP(PP) + HOSE AIR(ID=4.0, OD=8, L=560, EPDM) + CLAMP AS(ID=81, CIMA) + CLAMP HOSE(D=26) + CLAMP HOSE I(D=38)	1	
D32	SCREW TAPPING	7122401411	T2S TRS 4X14 MFZN	1	
D33	DAMPER FRICTION	361A700110	70N AKS	2	
		361A700140	70N CIMA		
D34	DAMPER PIN	361A700200	AKS D=14.5	2	
D35	UNIT BUBBLE PUMP AS	36189L4140	220-240V RP CHUSHION=760	1	
D36	SPECIAL SCREW(BUBBLE)	3616007400	T2S TRS 4X10+24	2	
D37	EMI FILTER(K27)	3611908740	0.22UF	1	
D38	SCREW TAPPING	7122401411	T2S TRS 4X14 MFZN	1	

■ CABINET AS



No.	PART NAME	PART CODE	SPECIFICATION	Q'TY	REMARK
E01	CABINET	3610812700	SGCC(GI) T=0.7 PCM	1	
		3610812710	SGCC(GI) T=0.7 PAINTING		
E02	FRAME LOWER	3612208400	SGCC T=0.8	1	
E03	BASE U L	3610393100	SGCC T=1.6	1	
	BASE U R	3610393110	SGCC T=1.6	1	
E04	LEG ADJUST AS	3617703800	FOOT(BUTYL)+SPECIAL NUT(SCP1) +SPECIAL BOLT(10x1.25, 51MM)	4	
		3617703811	CHINA, FOOT+SPECIAL NUT(M10x1, 25P)		
E05	HARNES AS	3612797500	COLD+HOT, BB	1	
		3612797510	COLD+HOT, NON-BB		
		3612797520	COLD, NON-BB, NON-REACTOR		
		3612797530	COLD, BB, NON-REACTOR		
		3612797540	COLD, NON-BB, REACTOR		
		3612797550	COLD, BB, REACTOR		
E06	UNIT DRAIN PUMP AS	36189L5K10	220-240V, 50Hz, 30W, AL, NO-HOLE	1	
E07	SCREW TAPPING	7112401211	T1 TRS 4*12 MFZN	1	
E08	HOSE DRAIN O AS	3613268520	L=1800, STRAIGHT TYPE, CLAMP PI=27	1	
E09	CLAMP HOSE	3611206400	NYLON, DA-18N	1	
E10	SCREW TAPPING	7122401411	T2S TRS 4X14 MFZN	1	
E11	PLATE T AS	3614540700	HIPS	1	
E12	SCREW TAPPING	7122401411	T2S TRS 4X14 MFZN	2	
E13	REACTOR AS	3615800100	REACTOR(RT-046B)+BRACKET REACTOR(PP) +SCREW TAPPING(T2S TRS 4x14 MFZN)	1	
E14	SCREW TAPPING	7122401411	T2S TRS 4x14 MFZN	2	
E15	CORD POWER AS	3611339630	EU-2PIN H05VV-F 1.0SQ 250V 16A 1.4M	1	
E16	SENSOR PRESSURE	3614825310	5V DL-DW12 INLET 180°	1	
E17	SCREW TAPPING	7122401411	T2S TRS 4x14 MFZN	1	
E18	FRAME UPPER	3612210300	GI 1.2T	1	D-MU1031
E19	SCREW TAPPING	7122401411	T2S 4x14 MFZN	4	D-MU1031
E20	SPECIAL BOLT	3616029100	M4*12.5 MACHINE DWD-100DR	4	D-MU1031