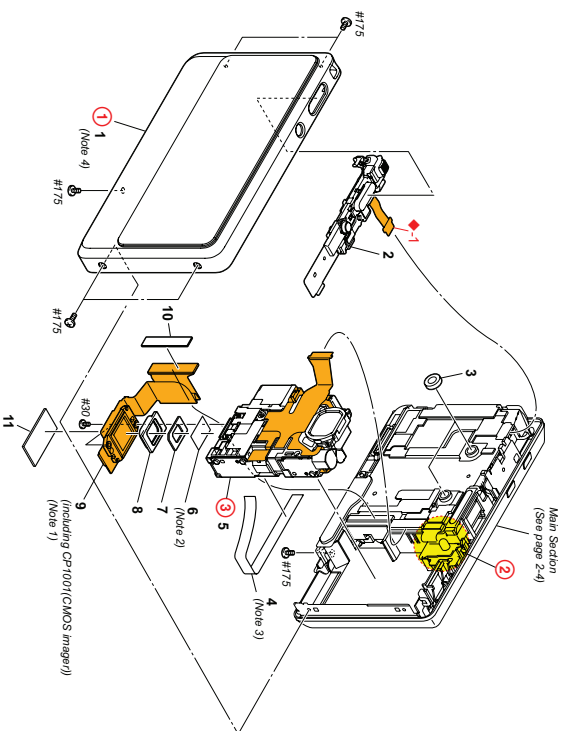


## 2-1. EXPLODED VIEWS

### 2-1-1. OVERALL SECTION

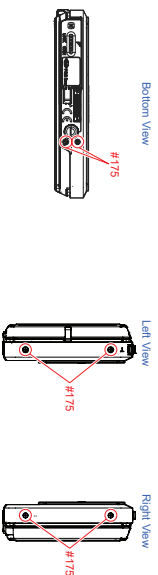


Ref.No.	PartNo.	Description	Ref.No.	PartNo.	Description
1	X-234-190-1	CABINET (FRONT) B.LOCKASSY (DARKBLUE) (Note 4)	6	1-68-008-11	OPTICAL FILTERBLOCK(OPB-0230) (Note 2)
1	X-234-196-1	CABINET (FRONT) SILVERASSY (SILVER) (Note 4)	7	4-1-19-038-02	PLATE, C LIGHT INTERCEPTION
2	X-234-192-1	CABINET (FRONT) REDDASSY (RED) (Note 4)	8	4-1-15-028-01	RUBBER SHEET E BOARD COMP ETC.
1	A-175-335-4	RL B.LOCKASSY (DARKBLUE)	9	A-175-028-4	OPTICAL FILTERBLOCK (Note 1)
			10	4-170-721-01	CUSHION (430) BB

## DISASSEMBLY

1. Remove to numerical order (①) to (③) in the left figure.
2. The meaning of the sign in left figure is as follows. Be careful when it removes.  
◆ X: Flexible Band, Flat Cable Harness

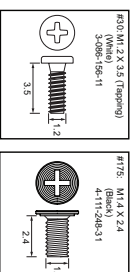
### ① #175 X 6



### DISCHARGING OF THE CHARGING CAPACITOR

### スロリ充電コンデンサの放電

### Screw

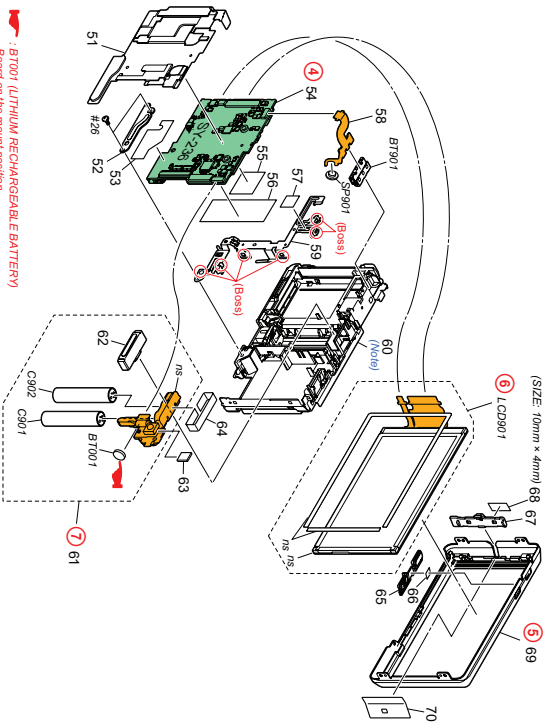


### Note

<b>Note 1:</b> Be sure to read "Precautions for Replacement of Imager" on page 6-1.	<b>Note 1:</b> イメージャーの交換時は6-1ページのイメージャー交換時の注意を必ずお読みください。
<b>Note 2:</b> Be sure to read "Assembly-1: How to Distinguish The Side of Optical Filter Block Facing to Lens Device" when changing the optical filter block.	<b>Note 2:</b> 光学フィルタブロックの交換時は "Assembly-1: How to Distinguish The Side of Optical Filter Block Facing to Lens Device" を必ずお読みください。
<b>Note 3:</b> Refer to "Assembly-2: Installation Cautions of Lens Light Interception Sheet".	<b>Note 3:</b> "Assembly-2: Installation Cautions of Lens Light Interception Sheet" を参照してください。
<b>Note 4:</b> Refer to "Assembly-3: Installation Cautions of Cabinet (Front) (From Assy)".	<b>Note 4:</b> "Assembly-3: Installation Cautions of Cabinet (Front) Assy" を参照してください。

2-1-2. MAIN SECTION

ns: not supplied



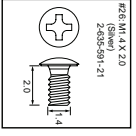
Part No.	Description	Part No.	Description
* 51	INSULATING SHEET (A, SY)	61	A-175-004A FLUSH RIB (6.4x0)
* 52	SHEET (METAL, BT)	Δ 62	1-48-48-41 RUSH UN (F, 6.4x0)
* 53	SHEET (MO)	63	4-175-48-71 CUSHION (48), A*
* 54	A-170-29-7A SHEET BOARD COMPLETE (SERVAC)	64	4-170-22-01 SHEET STITCHING PERCEPTION
* 55	SHEET (MO)	65	BUTTON (PUSH, ON)
* 56	4-19-25-4-01 SHEET (ORT)	66	4-170-73-01 SHEET (PLAY), ADHESIVE
* 57	INSULATING SHEET (B, SY)	* 67	4-170-72-7-01 STRAP
* 58	B7091R EXHIBIT BOARD	68	CAUTION 2 SHEET (STRAP), ADHESIVE
* 59	SHEET (METAL, MC)	69	X-2546-907-1 CABINET (REAR), ASSY
60	X-2541-989-3 BTH-439BLACK/SSV (DARK BLUE) COND. KR	* 70	4-170-73-01 SHEET (LCD), EXHIBIT PROTECTION
60	X-2541-970-3 BR-L-7EP CH. ASSY (KH) (NS)	Δ BT001	1-75-93-3-1 LITHIUM RECHARGEABLE BATTERY
		Δ BT001	1-75-93-3-1 LITHIUM RECHARGEABLE BATTERY
		Δ C901	1-16-48-4-1 CAP ELECT
		Δ C902	1-16-48-4-1 CAP ELECT
			98%
			39%
			98%
			39%

BT001 (LITHIUM RECHARGEABLE BATTERY)  
 Mount on the mount position.  
 (See page 6-4E)

DISASSEMBLY

1. Remove to numerical order (4) to (7) in the left figure.

Screw



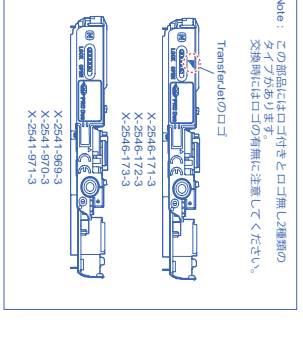
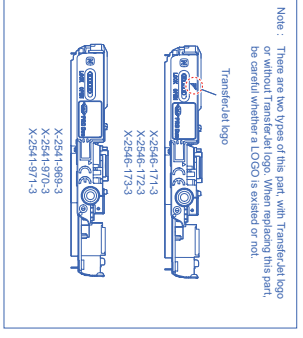
Note

**CAUTION 1**  
 Danger of explosion if battery is incorrectly replaced. Replace only with the same or equivalent type.  
 Dispose of used batteries according to the instructions.

**CAUTION 2**  
 For the part of 68 (SHEET (STRAP), ADHESIVE (4-172-960-01)) and SHEET, ADHESIVE (2-649-300-01) into the desired length and use it.

**注意 1**  
 電池の交換は、正しく行わないと爆発する恐れがあります。電池を交換する場合には必ず同じ型名の電池又は同等品と交換し、使用済み電池は、取扱指示に従って処分してください。

**注意 2**  
 68 : SHEET (STRAP), ADHESIVE (4-172-960-01)は、SHEET, ADHESIVE (2-649-300-01) を切って使用すること。



Checking supplied accessories.

Note: This item is supplied with the unit as an accessory, but is not prepared as standard part.



Battery charger (600mAh)  
 Δ 1487-523-11(U) Δ 1487-523-21(US CND)  
 Δ 1487-523-31(CH) Δ 1487-523-41(US CND, CH)  
 [EXCEPT J US CND, CH]



Rechargeable battery pack (N6-SH) (New)  
 Δ 1369A0712(EE)



Power cord (main lead) (EXCEPT J US CND, CH)  
 Δ 1487-423-11(U), E (S,UK), (K)  
 Δ 1487-423-11(EE), E (EXCEPT S,UK, BR)  
 Δ 1487-423-11(KR) Δ 1487-423-11(AUS)



Converter (P) Adapter (New)  
 Δ 1369A0812 (E, NTSC)



Whisker  
 Z809981-11



AV cable  
 1437-201-11



USB cable  
 1438-933-11



Pencil  
 Z808852-11



Multi-pointed  
 A1754646A



Instruction Manual  
 Only for camera accessories model  
**日本語、英語、韓国語、中国語のみ対応印刷版です。**

4.169430-01 (JAPANESE)  
 4.169430-11 (SIMPLIFIED CHINESE)  
 4.169430-21 (ENGLISH - SPANISH)  
 4.169431-31 (ENGLISH - SPANISH)  
 4.169431-41 (ENGLISH - FRENCH)  
 4.169431-51 (ENGLISH - GERMAN)  
 4.169431-61 (ENGLISH - ITALIAN)  
 4.169431-71 (ENGLISH - POLISH)  
 4.169431-81 (ENGLISH - PORTUGUESE)  
 4.169431-91 (ENGLISH - RUSIAN)  
 4.169432-01 (ENGLISH - SWEDISH)  
 4.169432-11 (ENGLISH - TURKISH)  
 4.169432-21 (ENGLISH - UZBEK)  
 4.169432-31 (ENGLISH - VIETNAMESE)  
 4.169432-41 (ENGLISH - GREEK)  
 4.169432-51 (ENGLISH - HUNGARIAN)  
 4.169432-61 (ENGLISH - CZECH)  
 4.169432-71 (ENGLISH - SLOVAK)  
 4.169432-81 (ENGLISH - ROMANIAN)  
 4.169432-91 (ENGLISH - POLISH)  
 4.169433-01 (ENGLISH - DANISH)  
 4.169433-11 (ENGLISH - NORWEGIAN)  
 4.169433-21 (ENGLISH - SWEDISH)  
 4.169433-31 (ENGLISH - FINNISH)  
 4.169433-41 (ENGLISH - DUTCH)  
 4.169433-51 (ENGLISH - PORTUGUESE)  
 4.169433-61 (ENGLISH - GREEK)  
 4.169433-71 (ENGLISH - ITALIAN)  
 4.169433-81 (ENGLISH - SPANISH)  
 4.169433-91 (ENGLISH - FRENCH)  
 4.169434-01 (ENGLISH - GERMAN)  
 4.169434-11 (ENGLISH - ITALIAN)  
 4.169434-21 (ENGLISH - SPANISH)  
 4.169434-31 (ENGLISH - FRENCH)  
 4.169434-41 (ENGLISH - PORTUGUESE)  
 4.169434-51 (ENGLISH - GREEK)  
 4.169434-61 (ENGLISH - HUNGARIAN)  
 4.169434-71 (ENGLISH - CZECH)  
 4.169434-81 (ENGLISH - SLOVAK)  
 4.169434-91 (ENGLISH - ROMANIAN)  
 4.169435-01 (ENGLISH - POLISH)  
 4.169435-11 (ENGLISH - PORTUGUESE)  
 4.169435-21 (ENGLISH - SWEDISH)  
 4.169435-31 (ENGLISH - TURKISH)  
 4.169435-41 (ENGLISH - UZBEK)  
 4.169435-51 (ENGLISH - VIETNAMESE)  
 4.169435-61 (ENGLISH - GREEK)  
 4.169435-71 (ENGLISH - HUNGARIAN)  
 4.169435-81 (ENGLISH - CZECH)  
 4.169435-91 (ENGLISH - SLOVAK)  
 4.169436-01 (ENGLISH - ROMANIAN)  
 4.169436-11 (ENGLISH - POLISH)  
 4.169436-21 (ENGLISH - DANISH)  
 4.169436-31 (ENGLISH - NORWEGIAN)  
 4.169436-41 (ENGLISH - SWEDISH)  
 4.169436-51 (ENGLISH - FINNISH)  
 4.169436-61 (ENGLISH - DUTCH)  
 4.169436-71 (ENGLISH - PORTUGUESE)  
 4.169436-81 (ENGLISH - GREEK)  
 4.169436-91 (ENGLISH - ITALIAN)  
 4.169437-01 (ENGLISH - SPANISH)  
 4.169437-11 (ENGLISH - FRENCH)  
 4.169437-21 (ENGLISH - PORTUGUESE)  
 4.169437-31 (ENGLISH - GREEK)  
 4.169437-41 (ENGLISH - HUNGARIAN)  
 4.169437-51 (ENGLISH - CZECH)  
 4.169437-61 (ENGLISH - SLOVAK)  
 4.169437-71 (ENGLISH - ROMANIAN)  
 4.169437-81 (ENGLISH - POLISH)  
 4.169437-91 (ENGLISH - PORTUGUESE)  
 4.169438-01 (ENGLISH - SWEDISH)  
 4.169438-11 (ENGLISH - TURKISH)  
 4.169438-21 (ENGLISH - UZBEK)  
 4.169438-31 (ENGLISH - VIETNAMESE)  
 4.169438-41 (ENGLISH - GREEK)  
 4.169438-51 (ENGLISH - HUNGARIAN)  
 4.169438-61 (ENGLISH - CZECH)  
 4.169438-71 (ENGLISH - SLOVAK)  
 4.169438-81 (ENGLISH - ROMANIAN)  
 4.169438-91 (ENGLISH - POLISH)  
 4.169439-01 (ENGLISH - DANISH)  
 4.169439-11 (ENGLISH - NORWEGIAN)  
 4.169439-21 (ENGLISH - SWEDISH)  
 4.169439-31 (ENGLISH - FINNISH)  
 4.169439-41 (ENGLISH - DUTCH)  
 4.169439-51 (ENGLISH - PORTUGUESE)  
 4.169439-61 (ENGLISH - GREEK)  
 4.169439-71 (ENGLISH - ITALIAN)  
 4.169439-81 (ENGLISH - SPANISH)  
 4.169439-91 (ENGLISH - FRENCH)  
 4.169440-01 (ENGLISH - GERMAN)  
 4.169440-11 (ENGLISH - ITALIAN)  
 4.169440-21 (ENGLISH - SPANISH)  
 4.169440-31 (ENGLISH - FRENCH)  
 4.169440-41 (ENGLISH - PORTUGUESE)  
 4.169440-51 (ENGLISH - GREEK)  
 4.169440-61 (ENGLISH - HUNGARIAN)  
 4.169440-71 (ENGLISH - CZECH)  
 4.169440-81 (ENGLISH - SLOVAK)  
 4.169440-91 (ENGLISH - ROMANIAN)  
 4.169441-01 (ENGLISH - POLISH)  
 4.169441-11 (ENGLISH - PORTUGUESE)  
 4.169441-21 (ENGLISH - SWEDISH)  
 4.169441-31 (ENGLISH - TURKISH)  
 4.169441-41 (ENGLISH - UZBEK)  
 4.169441-51 (ENGLISH - VIETNAMESE)  
 4.169441-61 (ENGLISH - GREEK)  
 4.169441-71 (ENGLISH - HUNGARIAN)  
 4.169441-81 (ENGLISH - CZECH)  
 4.169441-91 (ENGLISH - SLOVAK)  
 4.169442-01 (ENGLISH - ROMANIAN)  
 4.169442-11 (ENGLISH - POLISH)  
 4.169442-21 (ENGLISH - DANISH)  
 4.169442-31 (ENGLISH - NORWEGIAN)  
 4.169442-41 (ENGLISH - SWEDISH)  
 4.169442-51 (ENGLISH - FINNISH)  
 4.169442-61 (ENGLISH - DUTCH)  
 4.169442-71 (ENGLISH - PORTUGUESE)  
 4.169442-81 (ENGLISH - GREEK)  
 4.169442-91 (ENGLISH - ITALIAN)

Over-leaf Handbook (PDF)

The CD-ROM supplied contains all of language version of the Instruction Manual in pdf (Over-leaf Handbook.pdf) for printing.  
 \* The printed matter is not supplied. If required, please order it when you print manual sample.  
 \* 日本語版について、これは日本語のみ印刷版の添付品は付属していません。

QR-DM  
 Over-leaf operation software /  
 Over-leaf Handbook 7  
 Over-leaf Shop-UP Guide 7  
 4.165-175-01

4.165-176-01 (JAPANESE)  
 4.165-176-11 (ENGLISH)  
 4.165-176-21 (ENGLISH)  
 4.165-176-31 (ITALIAN)  
 4.165-176-41 (SPANISH)  
 4.165-176-51 (GERMAN)  
 4.165-176-61 (FRENCH)  
 4.165-176-71 (DUTCH)  
 4.165-176-81 (TRADITIONAL CHINESE)  
 4.165-176-91 (SIMPLIFIED CHINESE)  
 4.165-177-01 (CZECH)  
 4.165-177-11 (SLOVAK)  
 4.165-177-21 (ROMANIAN)  
 4.165-177-31 (POLISH)  
 4.165-177-41 (SWEDISH)  
 4.165-178-01 (FINNISH)  
 4.165-178-11 (DANISH)  
 4.165-178-21 (NORWEGIAN)  
 4.165-178-31 (GERMAN)  
 4.165-178-41 (ITALIAN)  
 4.165-178-51 (SPANISH)  
 4.165-178-61 (FRENCH)  
 4.165-178-71 (PORTUGUESE)  
 4.165-178-81 (GREEK)  
 4.165-178-91 (HUNGARIAN)  
 4.165-179-01 (CZECH)  
 4.165-179-11 (SLOVAK)  
 4.165-179-21 (ROMANIAN)  
 4.165-179-31 (POLISH)  
 4.165-179-41 (SWEDISH)  
 4.165-179-51 (FINNISH)  
 4.165-179-61 (DANISH)  
 4.165-179-71 (NORWEGIAN)  
 4.165-179-81 (GERMAN)  
 4.165-179-91 (ITALIAN)  
 4.165-180-01 (SPANISH)  
 4.165-180-11 (FRENCH)  
 4.165-180-21 (PORTUGUESE)  
 4.165-180-31 (GREEK)  
 4.165-180-41 (HUNGARIAN)  
 4.165-180-51 (CZECH)  
 4.165-180-61 (SLOVAK)  
 4.165-180-71 (ROMANIAN)  
 4.165-180-81 (POLISH)  
 4.165-180-91 (SWEDISH)  
 4.165-181-01 (FINNISH)  
 4.165-181-11 (DANISH)  
 4.165-181-21 (NORWEGIAN)  
 4.165-181-31 (GERMAN)  
 4.165-181-41 (ITALIAN)  
 4.165-181-51 (SPANISH)  
 4.165-181-61 (FRENCH)  
 4.165-181-71 (PORTUGUESE)  
 4.165-181-81 (GREEK)  
 4.165-181-91 (HUNGARIAN)  
 4.165-182-01 (CZECH)  
 4.165-182-11 (SLOVAK)  
 4.165-182-21 (ROMANIAN)  
 4.165-182-31 (POLISH)  
 4.165-182-41 (SWEDISH)  
 4.165-182-51 (FINNISH)  
 4.165-182-61 (DANISH)  
 4.165-182-71 (NORWEGIAN)  
 4.165-182-81 (GERMAN)  
 4.165-182-91 (ITALIAN)  
 4.165-183-01 (SPANISH)  
 4.165-183-11 (FRENCH)  
 4.165-183-21 (PORTUGUESE)  
 4.165-183-31 (GREEK)  
 4.165-183-41 (HUNGARIAN)  
 4.165-183-51 (CZECH)  
 4.165-183-61 (SLOVAK)  
 4.165-183-71 (ROMANIAN)  
 4.165-183-81 (POLISH)  
 4.165-183-91 (SWEDISH)  
 4.165-184-01 (FINNISH)  
 4.165-184-11 (DANISH)  
 4.165-184-21 (NORWEGIAN)  
 4.165-184-31 (GERMAN)  
 4.165-184-41 (ITALIAN)  
 4.165-184-51 (SPANISH)  
 4.165-184-61 (FRENCH)  
 4.165-184-71 (PORTUGUESE)  
 4.165-184-81 (GREEK)  
 4.165-184-91 (HUNGARIAN)  
 4.165-185-01 (CZECH)  
 4.165-185-11 (SLOVAK)  
 4.165-185-21 (ROMANIAN)  
 4.165-185-31 (POLISH)  
 4.165-185-41 (SWEDISH)  
 4.165-185-51 (FINNISH)  
 4.165-185-61 (DANISH)  
 4.165-185-71 (NORWEGIAN)  
 4.165-185-81 (GERMAN)  
 4.165-185-91 (ITALIAN)  
 4.165-186-01 (SPANISH)  
 4.165-186-11 (FRENCH)  
 4.165-186-21 (PORTUGUESE)  
 4.165-186-31 (GREEK)  
 4.165-186-41 (HUNGARIAN)  
 4.165-186-51 (CZECH)  
 4.165-186-61 (SLOVAK)  
 4.165-186-71 (ROMANIAN)  
 4.165-186-81 (POLISH)  
 4.165-186-91 (SWEDISH)  
 4.165-187-01 (FINNISH)  
 4.165-187-11 (DANISH)  
 4.165-187-21 (NORWEGIAN)  
 4.165-187-31 (GERMAN)  
 4.165-187-41 (ITALIAN)  
 4.165-187-51 (SPANISH)  
 4.165-187-61 (FRENCH)  
 4.165-187-71 (PORTUGUESE)  
 4.165-187-81 (GREEK)  
 4.165-187-91 (HUNGARIAN)  
 4.165-188-01 (CZECH)  
 4.165-188-11 (SLOVAK)  
 4.165-188-21 (ROMANIAN)  
 4.165-188-31 (POLISH)  
 4.165-188-41 (SWEDISH)  
 4.165-188-51 (FINNISH)  
 4.165-188-61 (DANISH)  
 4.165-188-71 (NORWEGIAN)  
 4.165-188-81 (GERMAN)  
 4.165-188-91 (ITALIAN)  
 4.165-189-01 (SPANISH)  
 4.165-189-11 (FRENCH)  
 4.165-189-21 (PORTUGUESE)  
 4.165-189-31 (GREEK)  
 4.165-189-41 (HUNGARIAN)  
 4.165-189-51 (CZECH)  
 4.165-189-61 (SLOVAK)  
 4.165-189-71 (ROMANIAN)  
 4.165-189-81 (POLISH)  
 4.165-189-91 (SWEDISH)  
 4.165-190-01 (FINNISH)  
 4.165-190-11 (DANISH)  
 4.165-190-21 (NORWEGIAN)  
 4.165-190-31 (GERMAN)  
 4.165-190-41 (ITALIAN)  
 4.165-190-51 (SPANISH)  
 4.165-190-61 (FRENCH)  
 4.165-190-71 (PORTUGUESE)  
 4.165-190-81 (GREEK)  
 4.165-190-91 (HUNGARIAN)  
 4.165-191-01 (CZECH)  
 4.165-191-11 (SLOVAK)  
 4.165-191-21 (ROMANIAN)  
 4.165-191-31 (POLISH)  
 4.165-191-41 (SWEDISH)  
 4.165-191-51 (FINNISH)  
 4.165-191-61 (DANISH)  
 4.165-191-71 (NORWEGIAN)  
 4.165-191-81 (GERMAN)  
 4.165-191-91 (ITALIAN)  
 4.165-192-01 (SPANISH)  
 4.165-192-11 (FRENCH)  
 4.165-192-21 (PORTUGUESE)  
 4.165-192-31 (GREEK)  
 4.165-192-41 (HUNGARIAN)  
 4.165-192-51 (CZECH)  
 4.165-192-61 (SLOVAK)  
 4.165-192-71 (ROMANIAN)  
 4.165-192-81 (POLISH)  
 4.165-192-91 (SWEDISH)

2.2. ELECTRICAL PARTS LIST

Ref. No. Part No. Description  
1-800-726-11 BT-056 FLEXIBLE BOARD  
\*\*\*\*\*

(BT90 is not included in BT-056 flexible board.)

< BATTERY TERMINAL BOARD >

△ BT901 1-130626-11 TERMINAL BOARD BATTERY

A-1759-335-A RL BLOCK ASSY (DIARAGLUE)  
A-1759-498-A RL BLOCK ASSY (SILVER)  
A-1759-898-A RL BLOCK ASSY (RED)

(Not supplied) RL-090 BOARD COMPLETE

(RL090 complete board is not supplied, but this is included in RL Block Assy.)

< DIODE >

\* D001 6-502284-01 DIODE 9V.M-DI08WTRSS  
\* D002 6-502468-01 DIODE CL-270S-WSS-SD-TS  
\* D003 6-502468-01 DIODE CL-270S-WSS-SD-TS

< RESISTOR >

R001 1-216452-11 METAL CHIP 22K 5% 1/10W

< SWITCH >

S001 1-796819-22 TACTILE SWITCH  
\* S002 1-796914-31 SWITCH TACTILE  
\* S003 1-796914-31 SWITCH TACTILE  
\* S004 1-796914-31 SWITCH TACTILE  
\* S005 1-796914-31 SWITCH TACTILE  
\* S007 1-796914-31 SWITCH TACTILE

A-1759-004A ST-223 BOARD COMPLETE

(D006 is not supplied, but this is included in ST-223 complete board.)

< BATTERY >

△ BT001 1-1756113-11 LITHIUM RECHARGEABLE BATTERY

< CAPACITOR >

\* C002 1-112746-11 CERAMIC CHIP 4.7UF 10% 6.3V  
C003 1-100819-91 CERAMIC CHIP 22UF 20% 6.3V  
△ C004 1-100782-11 CERAMIC CHIP 22UF 20% 50V  
△ C005 1-100782-11 CERAMIC CHIP 10UF 10% 50V  
△ C008 1-100761-21 CERAMIC CHIP 0.01UF 10% 250V

△ C091 1-116458-11 CAP ELECT 37UF 99% 315V  
△ C092 1-116458-11 CAP ELECT 37UF 99% 315V

< DIODE >

△ D003 6-501936-01 DIODE GRF02 (TE89)  
△ D004 6-501936-01 DIODE GRF02 (TE89)  
D005 (Not supplied) DIODE SC14J017TR

Ref. No. Part No. Description

\* I001 6-712975-01 IC BMY25NVEZ

< COIL >

\* L001 1-400320-11 INDUCTOR 22H

< TRANSISTOR >

△ \*Q001 6-552472-01 TR G15G133 (TJLS0N\*Q)

< RESISTOR >

R003 1-216121-00 METAL CHIP 1M 5% 1/10W  
R004 1-216282-11 METAL CHIP 1M 5% 1/10W  
R005 1-216282-11 METAL CHIP 8M 5% 1/10W  
R006 1-2161697-00 METAL CHIP 100K 5% 1/10W  
R007 1-216194-11 METAL CHIP 220 5% 1/6W

< TRANSFORMER >

△ \*T001 1-4461749-21 D.C.-D.C.CONVERTER TRANSFORMER

**Caution**

Danger of explosion if battery is incorrectly replaced.  
Replace only with the same or equivalent type.  
Dispose of used batteries according to the instructions.

**注意**

電池の交換は、正しく行われ、誤爆する恐れがあります。  
電池を交換する場合には必ず同じ型の電池を同梱品と  
交換してください。  
使用済み電池は、取扱説明書に従って処分してください。

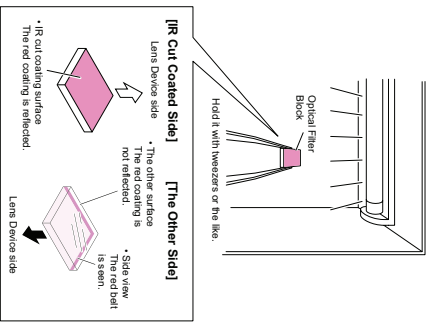
Please refer to LEVEL 3 about the ELECTRICAL PARTS LIST  
of CD-770 and SY-2206.

CD-770は、SY-2206のELECTRICAL PARTS LISTについては、  
LEVEL3を参照して下さい。

### 3. ASSEMBLY

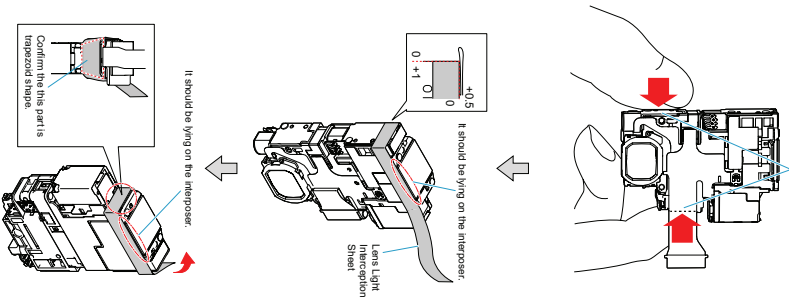
#### Assembly-1: How to distinguish the side of Optical Filter Block facing to Lens Device

The one side of the Optical Filter Block has treated with IR cut coating.  
 Mount the Optical Filter Block facing the IR cut coated side to the lens device.  
 Distinguish the IR cut coated side from the other by applying the fluorescent light to the Optical Filter Block in the dark place (cut off the outside light).



#### Assembly-2: Installation Cautions of Lens Light Interception Sheet

Hold here.



#### Assembly-3: Installation Cautions of Cabinet (Front) Assy

- Install the fix screws in the order of numbers.
- Do not tighten screws while holding both front and rear cabinets strongly.

It may cause the color variability on LCD panel by tightening the screw with holding the cabinet strongly. (It is easy to discriminate the color variability by displaying the whiteness.)

