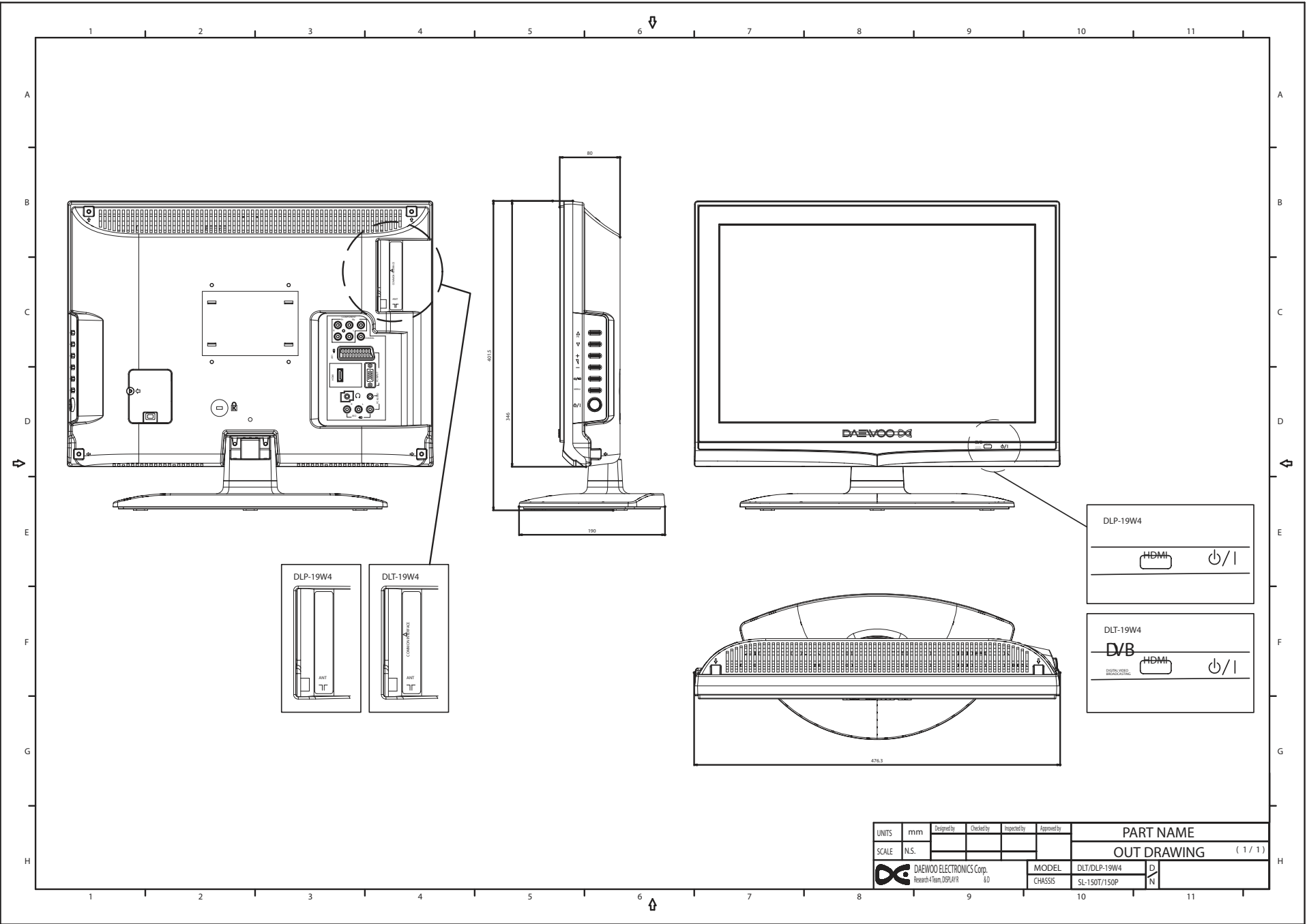


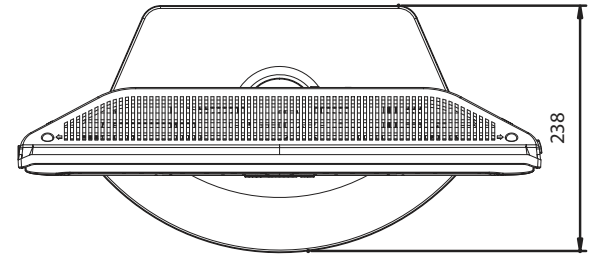
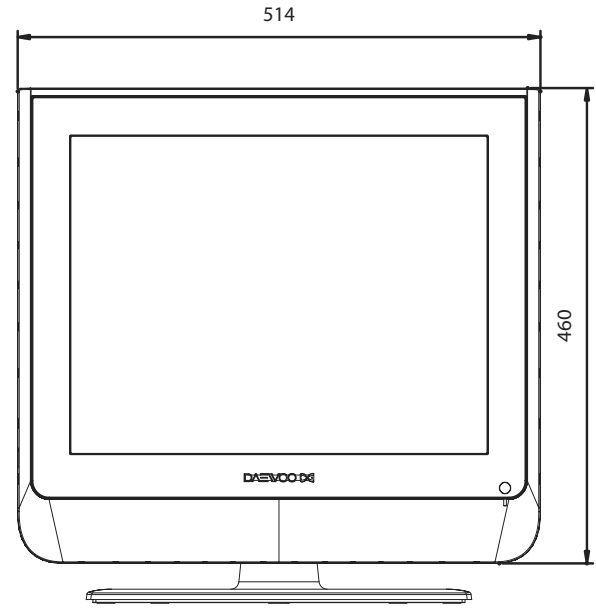
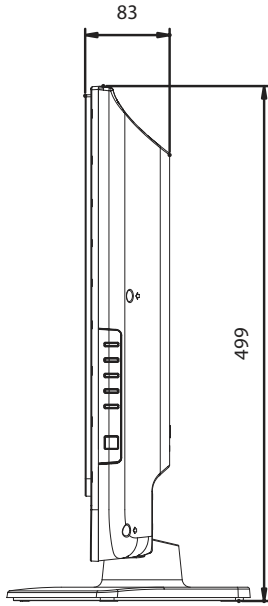
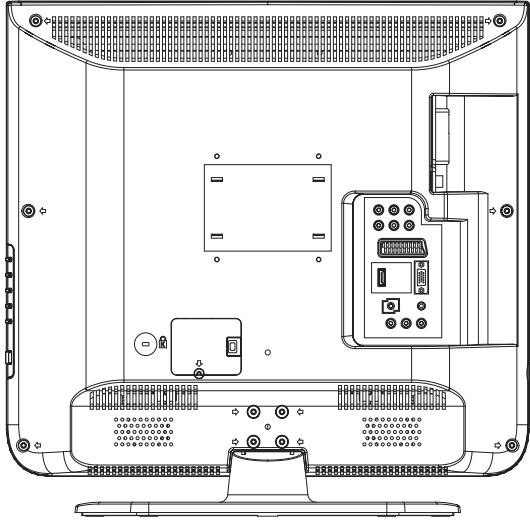
10. DLT/DLP-19W4 Outline



UNITS	mm	Designed by	Checked by	Inspected by	Approved by	PART NAME	
SCALE	N.S.					OUT DRAWING (1 / 1)	
DAEWOOD ELECTRONICS Corp. <small>Research 4 Team, DSEPLAY R & D</small>		MODEL	DLT/DLP-19W4		D		
		CHASSIS	SL-150T/150P		N		

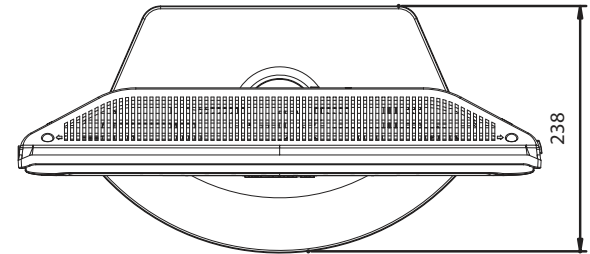
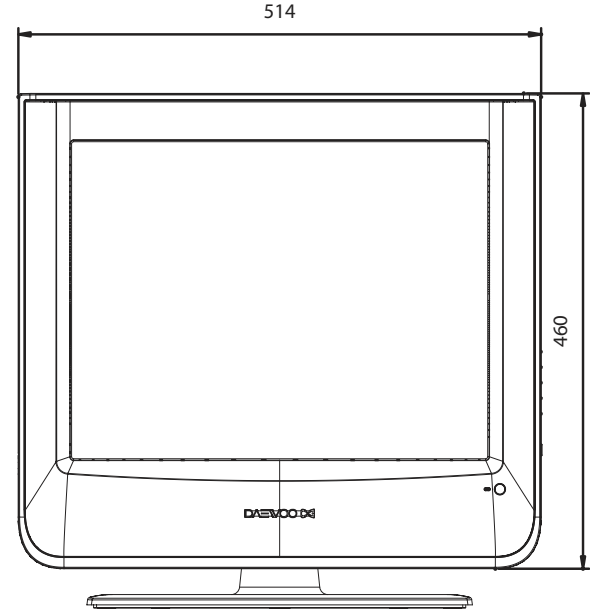
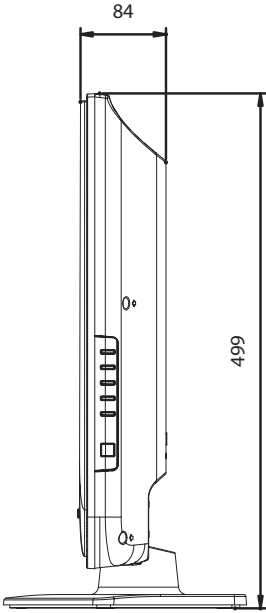
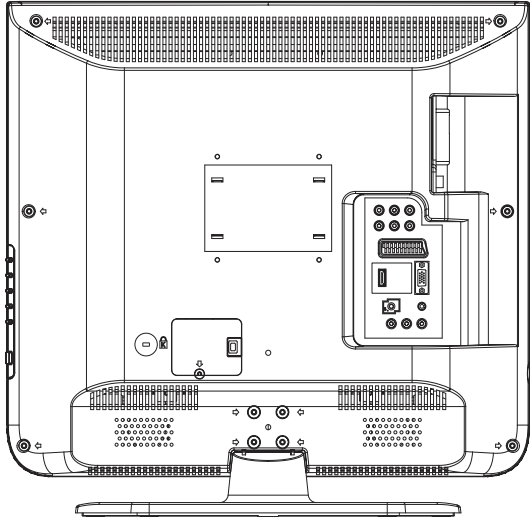
DIT/DLP-20J1/J9 Outline

55



DATE	REV	DESIGN	PROJ/ECN	REVISED	ISSUED
DAEWOO ELECTRONICS Corp. Miranod(Seong Nam, Gyeonggi-do)					TITLE DIT/DLP-20J1/J9 PART NO. DIT20J1
OUTLINE DRAWING					1 OF 1

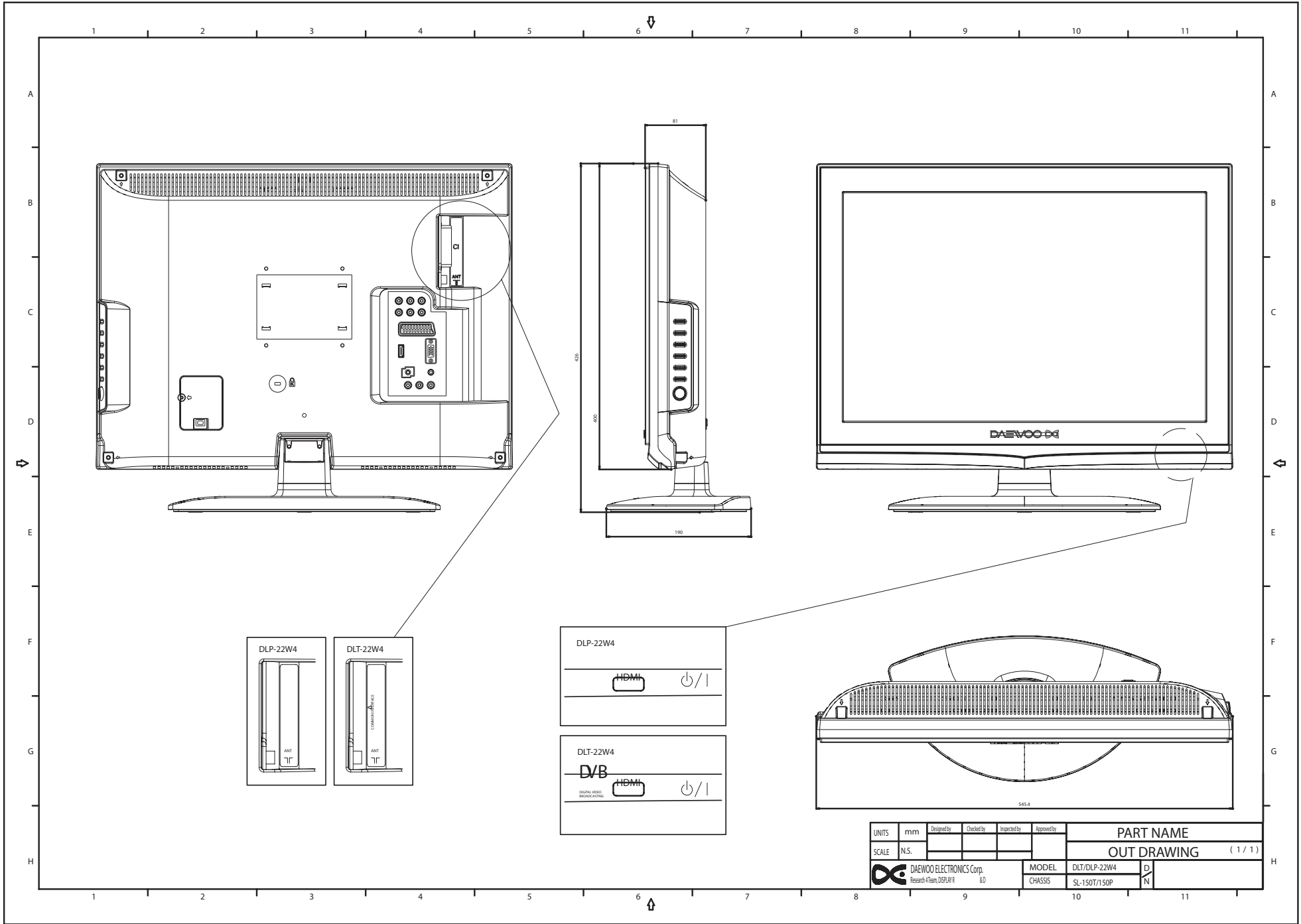
A01198x541 mm



DATE	REV	DESIGNER	APPROVER	QUANTITY	REVISION
 DAEWOO ELECTRONICS Corp. Mikulova Street, 225 (Praha 6)					DATE: 03/24/2003 TIME: 16:22:00 FILE: D:\2003\03\24\DLT-DLP-20J3\DLT-DLP-20J3.dwg
OUTLINE DRAWING					1 of 1

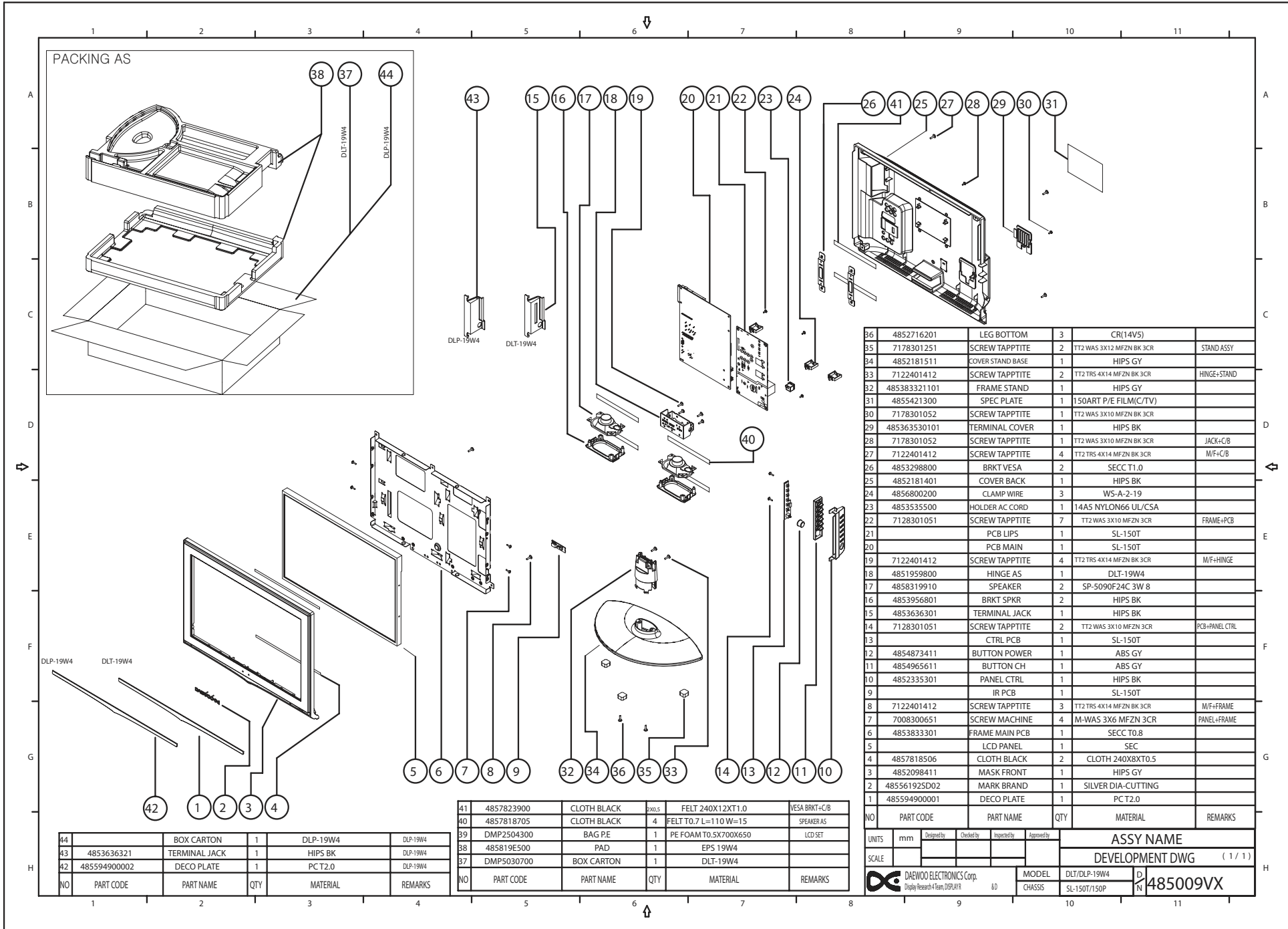
DLT/DLP-22W4 Outline

57



UNITS	mm	Designed by	Checked by	Inspected by	Approved by	PART NAME	
SCALE	N.S.					OUT DRAWING (1/1)	
DAEWOO ELECTRONICS Corp. Research & Team DISPLAY R 8D						MODEL	DLT/DLP-22W4
						CHASSIS	SL-150T/150P
							D/N

11. DLT/DLP-19W4 Exploded View

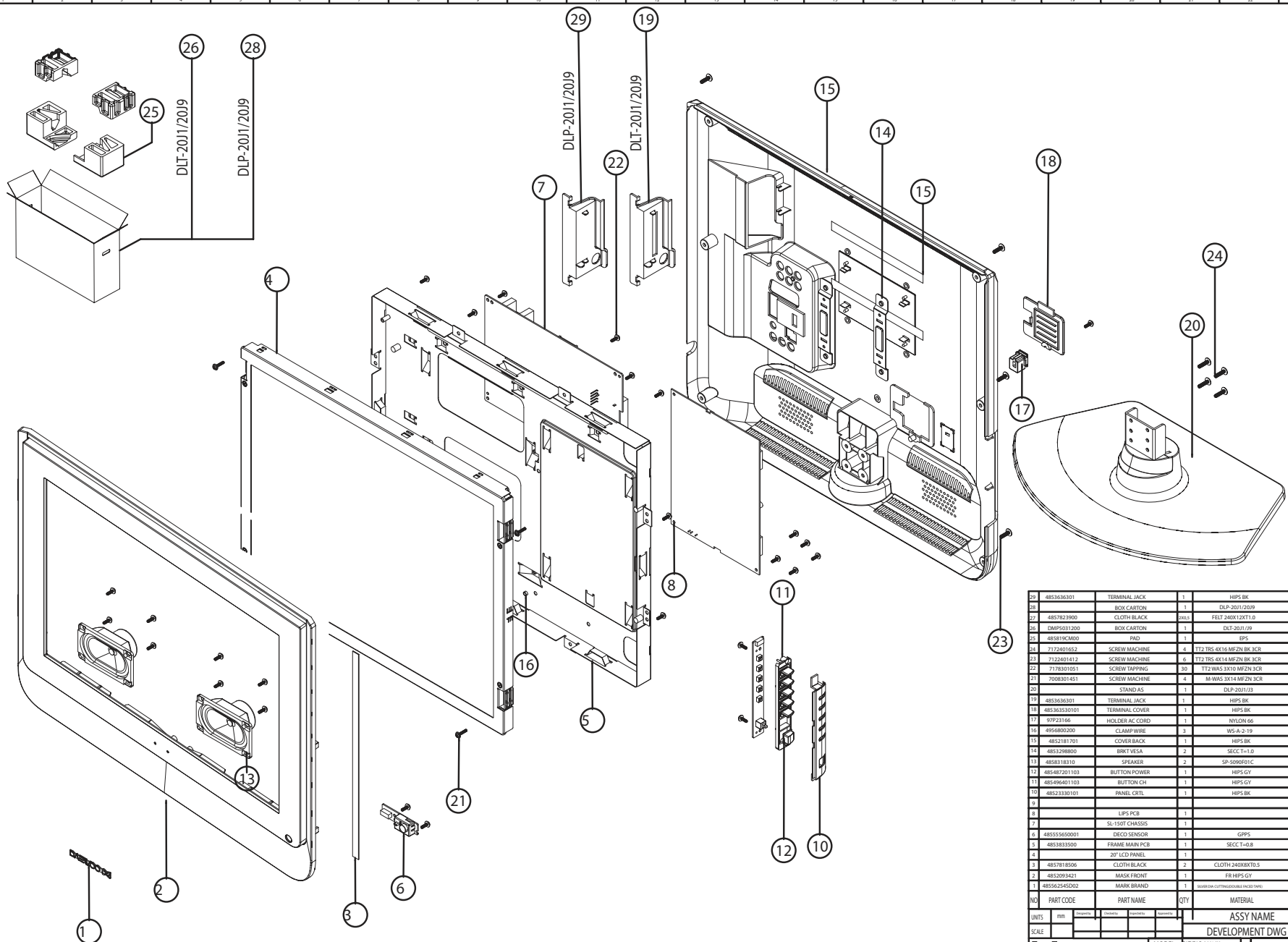


36	4852716201	LEG BOTTOM	3	CR(14V5)	
35	7178301251	SCREW TAPPTITE	2	TT2 WAS 3X12 MFZN BK 3CR	STAND ASSY
34	4852181511	COVER STAND BASE	1	HIPS GY	
33	7122401412	SCREW TAPPTITE	2	TT2 TR5 4X14 MFZN BK 3CR	HINGE+STAND
32	485383321101	FRAME STAND	1	HIPS GY	
31	4855421300	SPEC PLATE	1	150ART P/E FILM(C/TV)	
30	7178301052	SCREW TAPPTITE	1	TT2 WAS 3X10 MFZN BK 3CR	
29	485363530101	TERMINAL COVER	1	HIPS BK	
28	7178301052	SCREW TAPPTITE	1	TT2 WAS 3X10 MFZN BK 3CR	JACK+C/B
27	7122401412	SCREW TAPPTITE	4	TT2 TR5 4X14 MFZN BK 3CR	M/F+C/B
26	4853298800	BRKT VESA	2	SECC T1.0	
25	4852181401	COVER BACK	1	HIPS BK	
24	4856800200	CLAMP WIRE	3	WS-A-2-19	
23	4853535500	HOLDER AC CORD	1	14A5 NYLON66 UL/CSA	
22	7128301051	SCREW TAPPTITE	7	TT2 WAS 3X10 MFZN 3CR	FRAME+PCB
21		PCB LIPS	1	SL-150T	
20		PCB MAIN	1	SL-150T	
19	7122401412	SCREW TAPPTITE	4	TT2 TR5 4X14 MFZN BK 3CR	M/F+HINGE
18	4851959800	HINGE AS	1	DLT-19W4	
17	4858319910	SPEAKER	2	SP-5090F24C 3W 8	
16	4853956801	BRKT SPKR	2	HIPS BK	
15	4853636301	TERMINAL JACK	1	HIPS BK	
14	7128301051	SCREW TAPPTITE	2	TT2 WAS 3X10 MFZN 3CR	PCB+PANEL CTRL
13		CTRL PCB	1	SL-150T	
12	4854873411	BUTTON POWER	1	ABS GY	
11	4854965611	BUTTON CH	1	ABS GY	
10	4852335301	PANEL CTRL	1	HIPS BK	
9		IR PCB	1	SL-150T	
8	7122401412	SCREW TAPPTITE	3	TT2 TR5 4X14 MFZN BK 3CR	M/F+FRAME
7	7008300651	SCREW MACHINE	4	M-WAS 3X6 MFZN 3CR	PANEL+FRAME
6	4853833301	FRAME MAIN PCB	1	SECC T0.8	
5		LCD PANEL	1	SEC	
4	4857818506	CLOTH BLACK	2	CLOTH 240X8XTO.5	
3	4852098411	MASK FRONT	1	HIPS GY	
2	485561925D02	MARK BRAND	1	SILVER DIA-CUTTING	
1	485594900001	DECO PLATE	1	PCT2.0	
NO	PART CODE	PART NAME	QTY	MATERIAL	REMARKS

44		BOX CARTON	1	DLP-19W4	DLP-19W4
43	4853636321	TERMINAL JACK	1	HIPS BK	DLP-19W4
42	485594900002	DECO PLATE	1	PCT2.0	DLP-19W4
NO	PART CODE	PART NAME	QTY	MATERIAL	REMARKS

41	4857823900	CLOTH BLACK	2x0x.5	FELT 240X12XT1.0	VESA BRKT+C/B
40	4857818705	CLOTH BLACK	4	FELT TO.7 L=110 W=15	SPEAKER AS
39	DMP2504300	BAG PE	1	PE FOAM TO.5X700X650	LCD SET
38	485819E500	PAD	1	EPS 19W4	
37	DMP5030700	BOX CARTON	1	DLT-19W4	
NO	PART CODE	PART NAME	QTY	MATERIAL	REMARKS

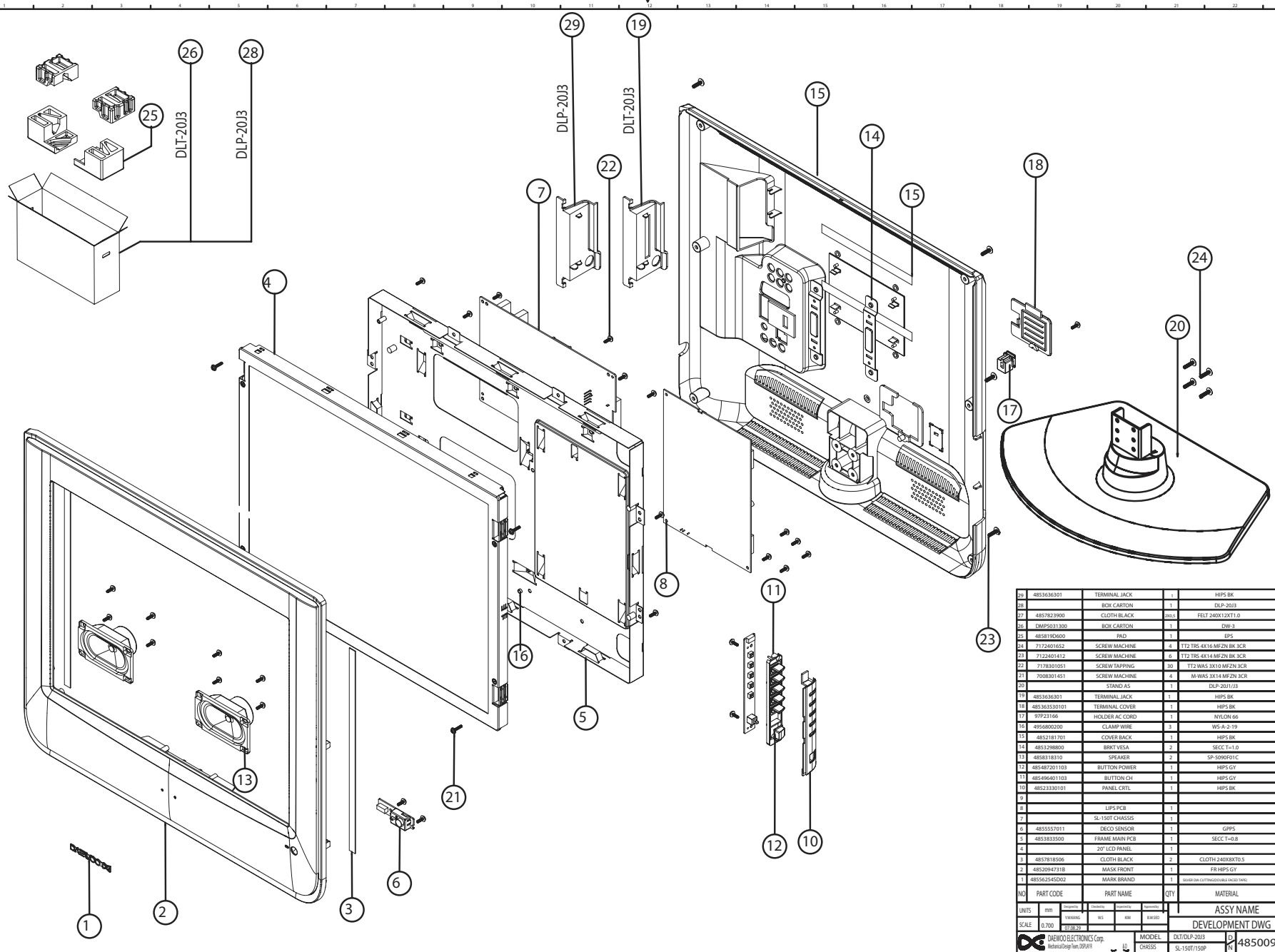
UNITS	mm	Designed by	Checked by	Inspected by	Approved by	ASSY NAME	
SCALE						DEVELOPMENT DWG (1 / 1)	
DAEWOO ELECTRONICS Corp.		MODEL		DLT/DLP-19W4		D	
Display Research Team DDAI/R		CHASSIS		SL-150T/150P		N 485009VX	



29	4853630301	TERMINAL JACK	1	HPS BK	DLP-20J19
28		BOX CARTON	1	DLP-20J1/20J9	
27	4857823900	CLOTH BLACK	240x3	FELT 240X12X1.0	ISA18T-CB
26	DMP5031200	BOX CARTON	1	DLT-20J1/J9	
25	483819CM00	PAD	1	EPS	
24	7122401652	SCREW MACHINE	4	T12 TRS 4X16 MFZN BK 3CR	
23	7122401412	SCREW MACHINE	6	T12 TRS 4X14 MFZN BK 3CR	
22	717831051	SCREW TAPPING	30	T12 WAS 3X10 MFZN 3CR	
21	7308301451	SCREW MACHINE	4	M-WAS 3/8 X MFZN 3CR	
20		STAND AS	1	DLP-20J1/J9	
19	4853630201	TERMINAL JACK	1	HPS BK	DLT-20J1/J9
18	485363330101	TERMINAL COVER	1	HPS BK	
17	97923166	HOLDER AC CORD	1	NYLON 66	
16	4956800200	CLAMP WIRE	3	WS-A-2-19	
15	4852181701	COVER BACK	1	HPS BK	
14	4853298800	BRKT VESA	2	SECC T-1.0	
13	4858318310	SPEAKER	2	SP-5090P01C	
12	485487201103	BUTTON POWER	1	HPS GY	
11	485496401104	BUTTON CH	1	HPS GT	
10	48523330101	PANEL CRT	1	HPS BK	
9		LIPS PCB	1		
8		SL-150T CHASSIS	1		
7	485556600001	DECO SENSOR	1	GPSS	
6	4853833500	FRAME MAIN PCB	1	SECC T-0.8	
5		20" LCD PANEL	1		
4	4857818506	CLOTH BLACK	2	CLOTH 240X8X10.5	
3	4852093421	MASK FRONT	1	FR HPS GY	
2	485562545002	MARK BRAND	1	System (CM/PRO/OS/MS/MS/MS)	AL-T1.0
1					
NO	PART CODE	PART NAME	QTY	MATERIAL	REMARKS
UNITS	mm			ASSY NAME	
SCALE				DEVELOPMENT DWG	(1 / 1)



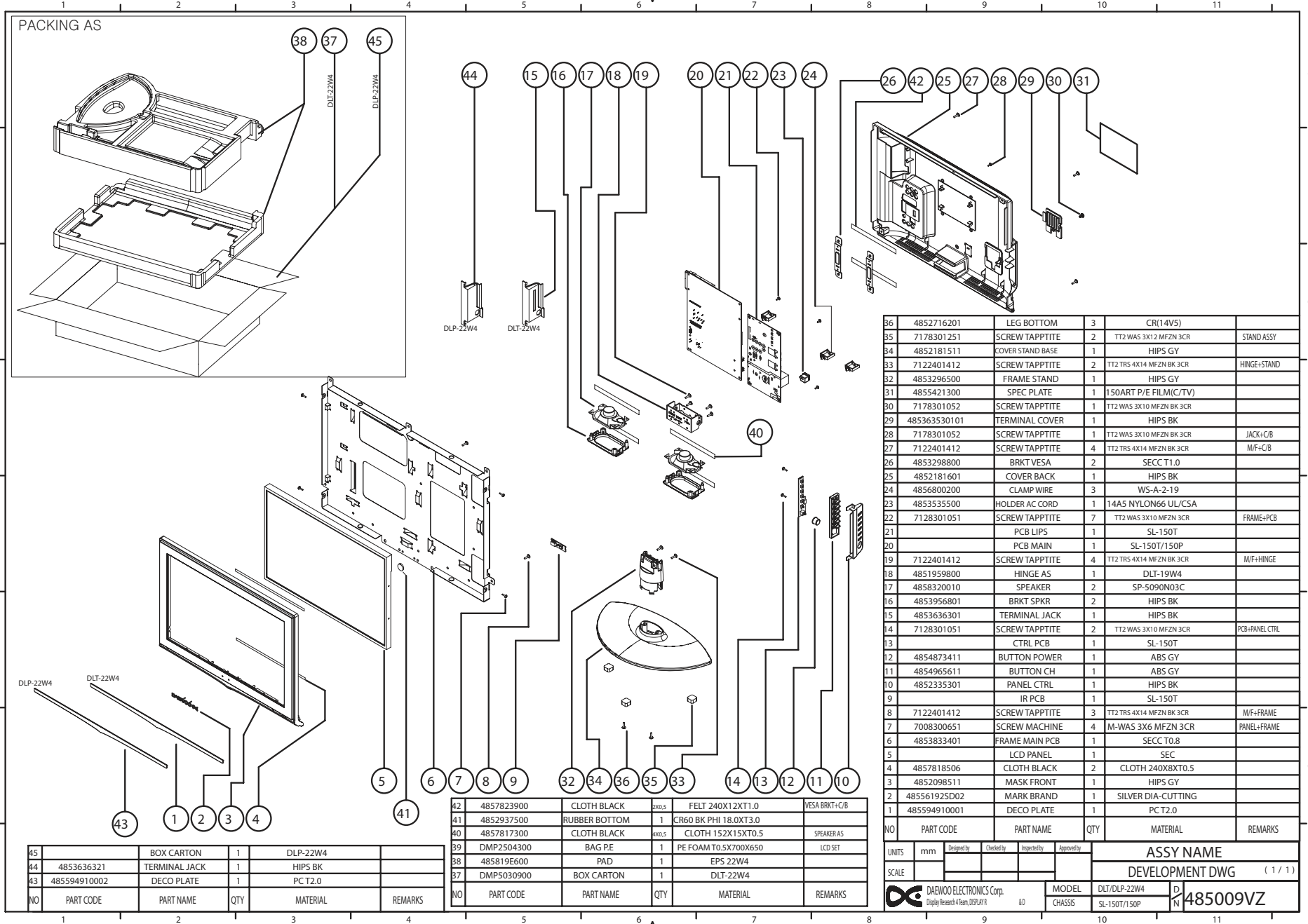
MODEL: DLT/DLP-20J1/J9
CHASSIS: SL-150T/50P



NO	PART CODE	PART NAME	QTY	MATERIAL	REMARKS
26	4853630201	TERMINAL JACK	1	HIPS BK	DLP-20J3
26		BOX CARTON	1	DLP-20J3	
27	4857823900	CLOTH BLACK	26x3	FELT 240X12X1.0	500-887-02
26	DMP5031300	BOX CARTON	1	DW-3	
25	4858190600	PALD	1	EPS	
24	7172401602	SCREW MACHINE	4	T12 TRS 4X16 MFZN BK_SCR	
23	7122401412	SCREW MACHINE	6	T12 TRS 4X14 MFZN BK_SCR	
22	7178301051	SCREW TAPPING	30	T12 WAS 3X10 MFZN_BCR	
21	7008301451	SCREW MACHINE	4	M-WAS 3X14 MFZN_SCR	
20		STAND AS	1	DLP-20J3/B	
19	4853630201	TERMINAL JACK	1	HIPS BK	DLP-20J3
18	4853630101	TERMINAL COVER	1	HIPS BK	
17	5923166	HOLDER AC COORD	1	NYLON 66	
16	4956800200	CLAMP WIRE	3	WS-A-2-19	
15	4852181701	COVER BACK	1	HIPS BK	
14	4853298800	BRKT VESA	2	SECC T-1.0	
13	4858318310	SPEAKER	2	SP-509R01C	
12	485487201103	BUTTON POWER	1	HIPS GY	
11	485496401108	BUTTON CH	1	HIPS GY	
10	48523330101	PANEL CMTL	1	HIPS BK	
9					
8		LIPS PCB	1		
7		SL-150T CHASSIS	1		
6	4855557011	DECO SENSOR	1	GPSS	
5	4853813500	FRAME MAIN PCB	1	SECC T=0.8	
4		20" LCD PANEL	1		
3	4857818506	CLOTH BLACK	2	CLOTH 240X8X10.5	
2	48520947318	MASK FRONT	1	FR HIPS GY	
1	485562545002	MARK BRAND	1	COVER (FR MEDICAL CASE) (NOV)	AG-11.6

UNITS	REV	DATE	BY	CHKD	APP'D	ASSY NAME
SCALE	0.700	1/20/02	WYKANG	NS	BM	DEVELOPMENT DWG (1/1)
DREW ELECTRONICS Corp. MODEL: DLT/DLP-20J3 PART: 485009WE CHGSS: SL-150T/750P						

DLT/DLP-22W4 Exploded View



36	4852716201	LEG BOTTOM	3	CR(14V5)	
35	7178301251	SCREW TAPPTITE	2	TT2 WAS 3X12 MFZN 3CR	STAND ASSY
34	4852181511	COVER STAND BASE	1	HIPS GY	
33	7122401412	SCREW TAPPTITE	2	TT2 TR5 4X14 MFZN BK 3CR	HINGE+STAND
32	4853296500	FRAME STAND	1	HIPS GY	
31	4855421300	SPEC PLATE	1	150ART P/E FILM(C/TV)	
30	7178301052	SCREW TAPPTITE	1	TT2 WAS 3X10 MFZN BK 3CR	
29	485363530101	TERMINAL COVER	1	HIPS BK	
28	7178301052	SCREW TAPPTITE	1	TT2 WAS 3X10 MFZN BK 3CR	JACK+C/B
27	7122401412	SCREW TAPPTITE	4	TT2 TR5 4X14 MFZN BK 3CR	M/F+C/B
26	4853298800	BRKT VESA	2	SECC T1.0	
25	4852181601	COVER BACK	1	HIPS BK	
24	4856800200	CLAMP WIRE	3	WS-A-2-19	
23	4853535500	HOLDER AC CORD	1	14A5 NYLON66 UL/CSA	
22	7128301051	SCREW TAPPTITE	7	TT2 WAS 3X10 MFZN 3CR	FRAME+PCB
21		PCB LIPS	1	SL-150T	
20		PCB MAIN	1	SL-150T/150P	
19	7122401412	SCREW TAPPTITE	4	TT2 TR5 4X14 MFZN BK 3CR	M/F-HINGE
18	4851959800	HINGE AS	1	DLT-19W4	
17	4858320010	SPEAKER	2	SP-5090N03C	
16	4853956801	BRKT SPKR	2	HIPS BK	
15	4853636301	TERMINAL JACK	1	HIPS BK	
14	7128301051	SCREW TAPPTITE	2	TT2 WAS 3X10 MFZN 3CR	PCB+PANEL CTRL
13		CTRL PCB	1	SL-150T	
12	4854873411	BUTTON POWER	1	ABS GY	
11	4854965611	BUTTON CH	1	ABS GY	
10	4852335301	PANEL CTRL	1	HIPS BK	
9		IR PCB	1	SL-150T	
8	7122401412	SCREW TAPPTITE	3	TT2 TR5 4X14 MFZN BK 3CR	M/F+FRAME
7	7008300651	SCREW MACHINE	4	M-WAS 3X6 MFZN 3CR	PANEL+FRAME
6	4853833401	FRAME MAIN PCB	1	SECC T0.8	
5		LCD PANEL	1	SEC	
4	4857818506	CLOTH BLACK	2	CLOTH 240X8XT0.5	
3	4852098511	MASK FRONT	1	HIPS GY	
2	485561925D02	MARK BRAND	1	SILVER DIA-CUTTING	
1	485594910001	DECO PLATE	1	PC T2.0	
NO	PART CODE	PART NAME	QTY	MATERIAL	REMARKS

45		BOX CARTON	1	DLP-22W4	
44	4853636321	TERMINAL JACK	1	HIPS BK	
43	485594910002	DECO PLATE	1	PC T2.0	
NO	PART CODE	PART NAME	QTY	MATERIAL	REMARKS

42	4857823900	CLOTH BLACK	2x0.5	FELT 240X12XT1.0	VESA BRKT+C/B
41	4852937500	RUBBER BOTTOM	1	CR60 BK PHI 18.0XT3.0	
40	4857817300	CLOTH BLACK	4x0.5	CLOTH 152X15XT0.5	SPEAKER AS
39	DMP2504300	BAG PE	1	PE FOAM T0.5X700X650	LCD SET
38	485819E600	PAD	1	EPS 22W4	
37	DMP5030900	BOX CARTON	1	DLT-22W4	
NO	PART CODE	PART NAME	QTY	MATERIAL	REMARKS

UNITS	mm	Designed by	Checked by	Inspected by	Approved by	ASSY NAME	
SCALE						DEVELOPMENT DWG (1/1)	
DAEWOO ELECTRONICS Corp.		MODEL		DLP/DLP-22W4		D	
Display Research 4 Team, DDP/AV R		CHASSIS		SL-150T/150P		N 485009VZ	