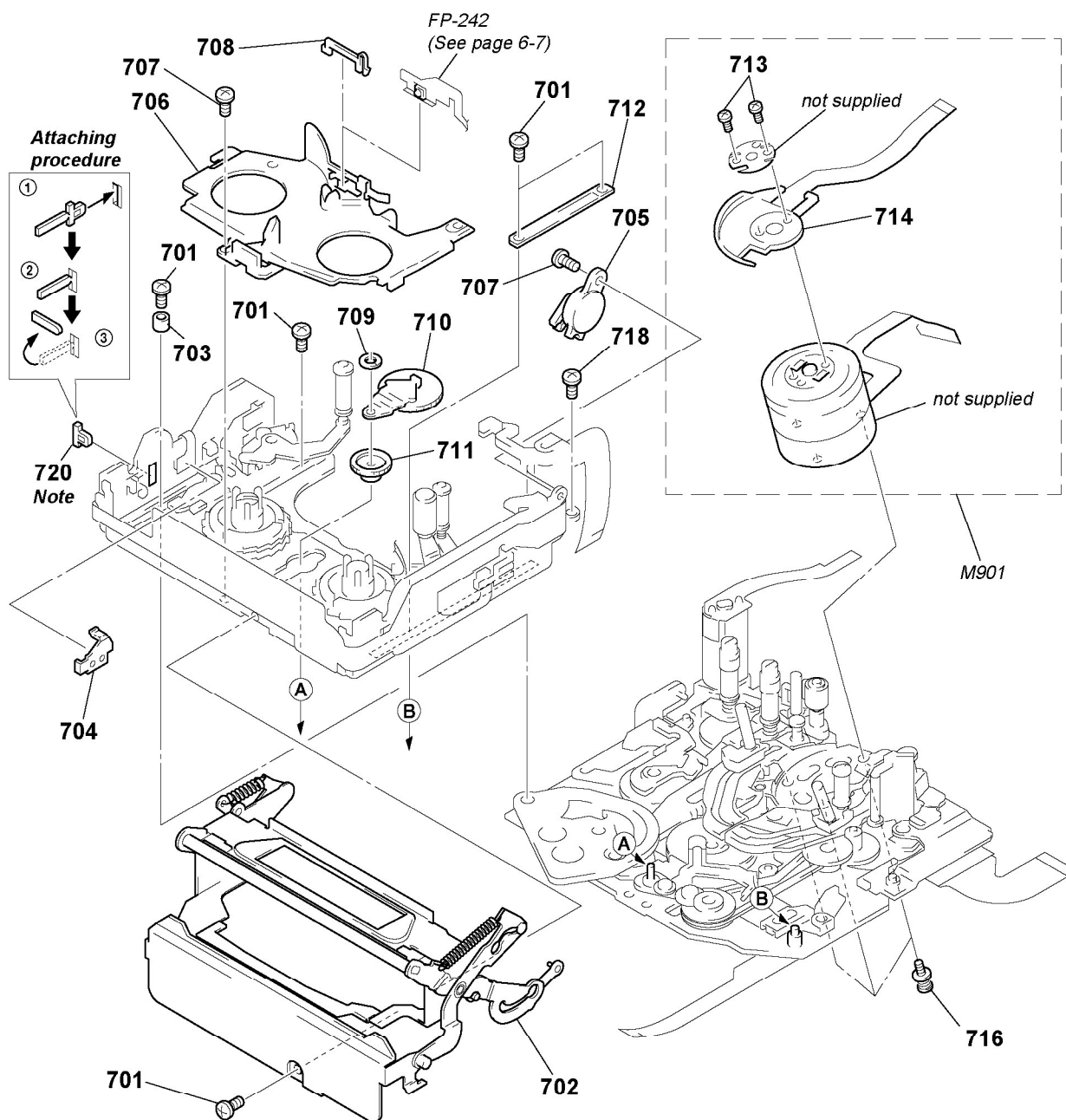


6-1-6. CASSETTE COMPARTMENT AND DRUM ASSY SECTION



Note: Once remove No. 720 CC fastener, don't use it again.
Be sure to replace it with new one.
(Attaching procedure is as shown above figure.)

Ref. No.	Part No.	Description	Remarks	Ref. No.	Part No.	Description	Remarks
701	3-728-103-11	SCREW (M1.4X1.6)		710	X-3947-150-1	GOOSENECK ASSY (2)	
702	X-3949-140-1	CASSETTE COMPARTMENT ASSY		711	3-748-736-01	GEAR, RELAY	
703	3-748-703-01	COLLAR		712	3-748-702-02	SLIDER, CAM	
* 704	3-976-449-02	COVER, CC SWITCH		713	3-962-920-01	SCREW(M1.4X2.1)	
705	3-976-446-01	DAMPER		714	X-3949-419-1	MOTOR FPC ASSY	
706	X-3748-613-3	BASE ASSY, LED		716	A-7026-009-B	SCREW ASSY, DRUM FITTING	
707	3-054-065-11	BOLT (M1.4)		718	3-703-816-42	SCREW (M1.4X2.5), SPECIAL HEAD	
708	3-748-683-01	HOLDER, LED		* 720	3-979-009-03	FASTENER, CC	
709	3-315-414-31	WASHER		M901	A-7048-901-A	DRUM BLOCK ASSY(DEH-07F-R)	