



## SECTION 7

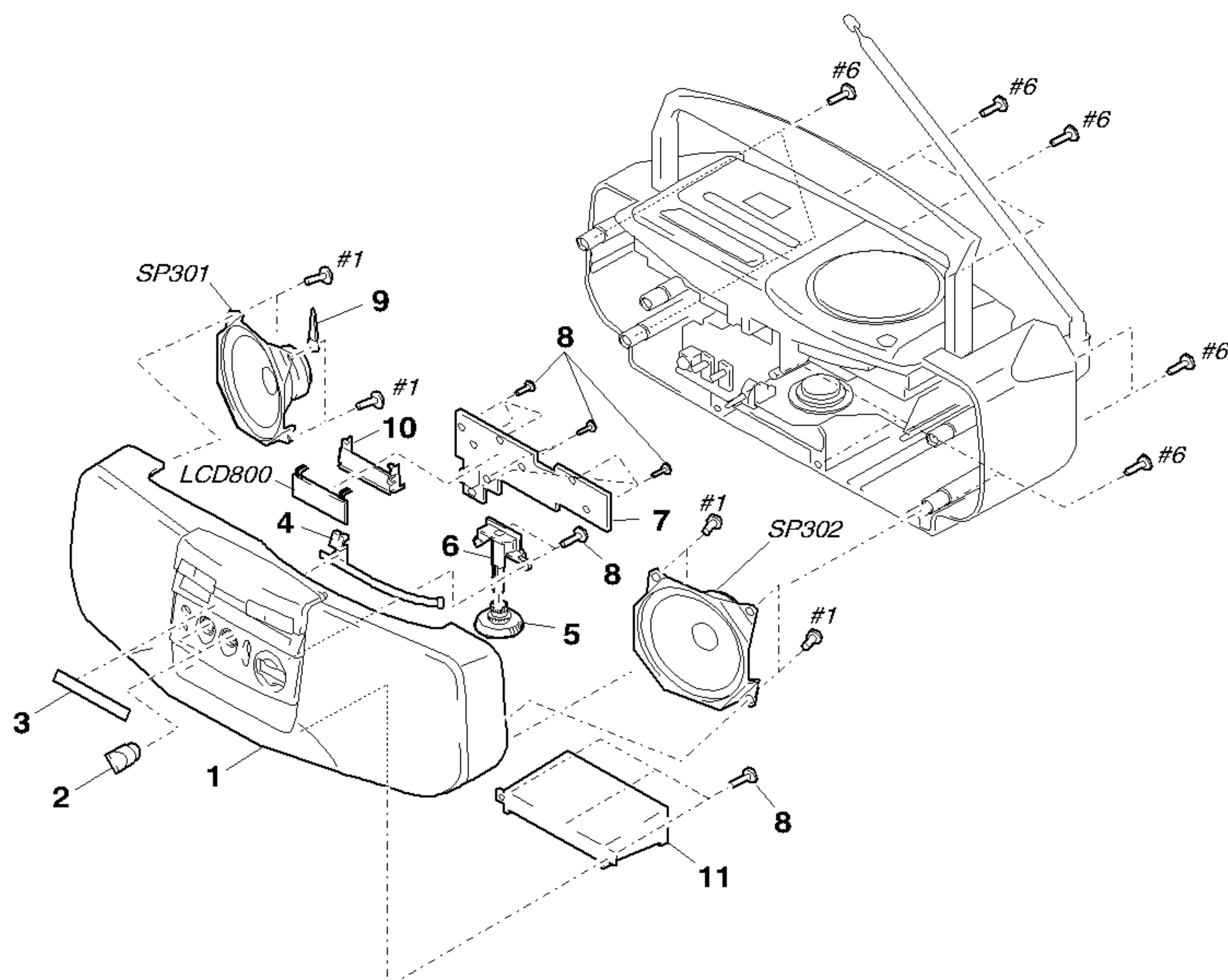
### EXPLODED VIEWS

NOTE :

- -XX, -X mean standardized parts, so they may have some difference from the original one.
- Items marked “ \* ”are not stocked since they are seldom required for routine service. Some delay should be anticipated when ordering these items.
- The mechanical parts with no reference number in the exploded views are not supplied.
- Hardware (# mark) list and accessories and packing materials are given in the last of this parts list.
- Abbreviation  
IT : Italian  
EE : East European  
CIS : Russian

The components identified by mark  or dotted line with mark  are critical for safety.  
Replace only with part number specified.

## 7-1. FRONT CABINET SECTION



<u>Ref. No.</u>	<u>Part No.</u>	<u>Description</u>	<u>Remark</u>
1	X-3375-982-1	CABINET (FRONT) SUB ASSY (AEP,UK,CIS)	
1	X-3375-983-1	CABINET (FRONT) SUB ASSY (IT)	
1	X-3375-984-1	CABINET (FRONT) SUB ASSY (EE)	
2	3-018-837-01	KNOB (VOL)	
3	3-018-841-11	WINDOW (TU) (AEP,UK,CIS)	
3	3-018-841-31	WINDOW (TU) (IT)	
3	3-018-841-41	WINDOW (TU) (EE)	
4	3-018-839-01	POINTER	
5	3-018-840-01	KNOB (TU)	
* 6	3-018-842-01	CHASSIS (TU)	

<u>Ref. No.</u>	<u>Part No.</u>	<u>Description</u>	<u>Remark</u>
* 7	1-668-281-11	CONTROL BOARD	
8	4-951-620-01	SCREW (2.6X8), +BVTP	
9	3-703-397-01	STOPPER, WIRING	
10	3-018-845-01	HOLDER (LCD)	
* 11	3-022-854-01	CHASSIS (DUCT)	
LCD800	1-801-913-11	DISPLAY PANEL, LIQUID CRYSTAL	
SP301	1-505-889-11	SPEAKER (10cm) (L-CH)	
SP302	1-505-889-11	SPEAKER (10cm) (R-CH)	