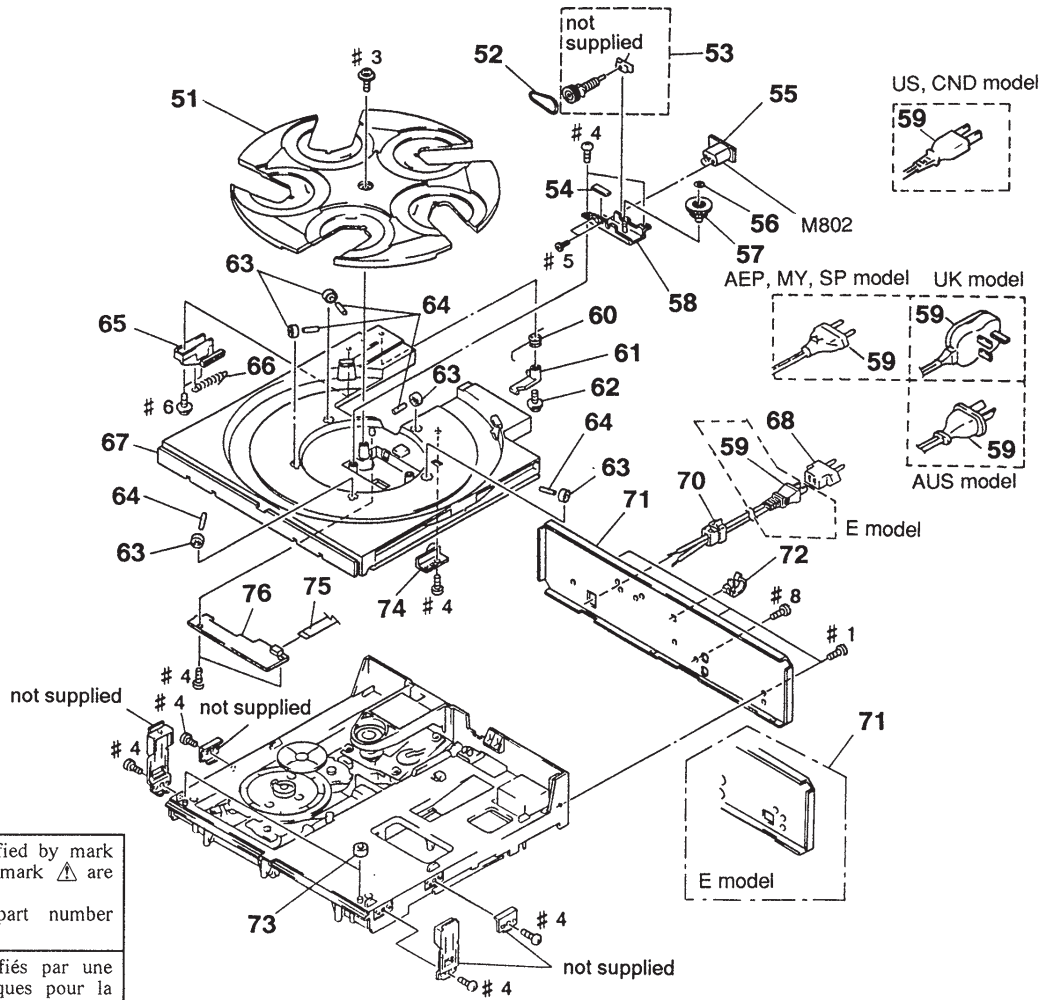


5-2. BACK PANEL AND DISK TABLE SECTION

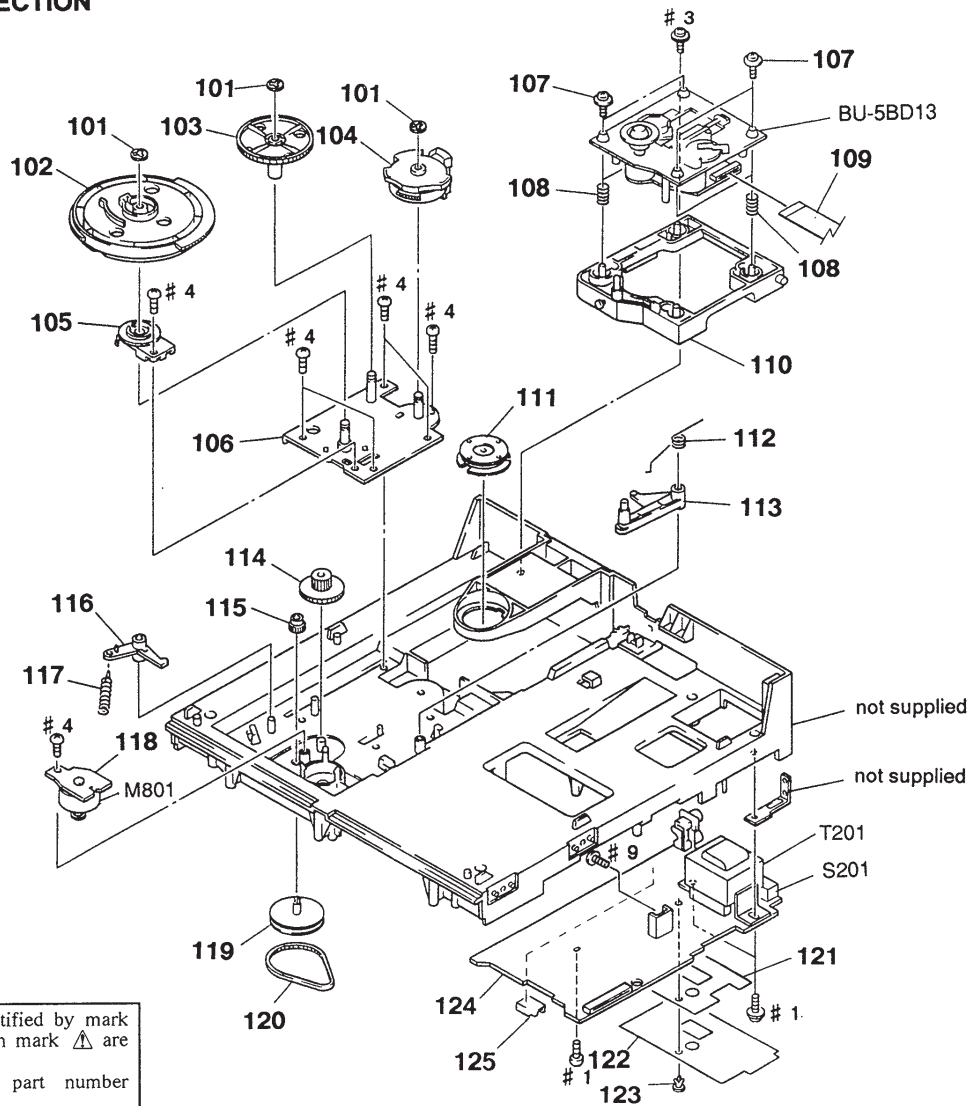


The components identified by mark \triangle or dotted line with mark \triangle are critical for safety. Replace only with part number specified.

Les composants identifiés par une marque \triangle sont critiques pour la sécurité. Ne les remplacer que par une pièce portant le numéro spécifié.

Ref. No.	Part No.	Description	Remark	Ref. No.	Part No.	Description	Remark
* 51	4-957-299-11	TABLE (B), DISK		* 70	3-703-244-00	BUSHING (2104), CORD	
52	4-957-304-01	BELT (RM)				(US, CND, AEP, UK, G, MY, SP, AUS)	
53	X-4943-479-1	GEAR (ROTARY A) ASSY		70	3-703-571-11	BUSHING (S) (4516), CORD (C365:E)	
* 54	4-957-295-11	CUSHION (RM)		* 71	4-971-080-01	PANEL, BACK (C365:US)	
* 55	1-650-082-11	TABLE MOTOR BOARD		* 71	4-971-080-11	PANEL, BACK (C365:AEP, MY, SP)	
56	3-325-697-21	WASHER		* 71	4-971-080-21	PANEL, BACK (C365:UK)	
57	4-957-284-01	GEAR (LOTARY B)		* 71	4-971-080-31	PANEL, BACK (C365:AUS)	
58	X-4944-128-1	BRACKET (RM) ASSY		* 71	4-971-080-41	PANEL, BACK (C365:E)	
\triangle 59	1-575-042-21	CORD, POWER (US, CND)		* 71	4-971-080-51	PANEL, BACK (made in MALAYSIA) (C265:US)	
\triangle 59	1-575-651-21	CORD, POWER (C265:AEP, G/C365:AEP, G, MY, SP)		* 71	4-971-080-61	PANEL, BACK (C265:AEP)	
\triangle 59	1-696-027-11	CORD, POWER (C365:E)		* 71	4-971-080-71	PANEL, BACK (C265:UK)	
\triangle 59	1-696-845-11	CORD, POWER (AUS)		* 71	4-971-080-81	PANEL, BACK (C265:AUS)	
\triangle 59	1-751-529-11	CORD, POWER (UK)		* 71	4-971-532-01	PANEL, BACK (C365:CND)	
60	4-957-293-11	SPRING (RACK RELEASE)		* 71	4-971-532-11	PANEL, BACK (C265:CND)	
61	4-957-291-11	LEVER (RACK RELEASE)		* 71	4-971-532-21	PANEL, BACK (C365:G)	
62	4-957-868-11	SCREW (+PTPWH 2.6X20)		* 71	4-971-532-31	PANEL, BACK (C265:G)	
63	X-4924-457-1	ROLLER ASSY		* 71	4-971-532-41	PANEL, BACK (made in CHINA) (C265:US)	
64	4-934-376-01	SHAFT (ROLLER)		* 72	4-949-235-01	HOOK	
65	4-957-292-11	SLIDER (RACK)		* 73	4-951-619-01	CUSHION (A)	
66	4-957-294-11	SPRING (D. T), TENSION		74	X-4944-129-1	BRACKET (ROLLER D) ASSY	
* 67	4-957-298-01	TABLE (A), DISK		75	1-751-052-11	WIRE (FLAT TYPE) (6 CORE)	
\triangle 68	1-569-007-11	ADAPTER, CONVERSION 2P (C365:E)		* 76	1-647-362-11	SENSOR BOARD	
				M802	A-4660-525-A	MOTOR ASSY, ROTARY (TABLE)	

5-3. CHASSIS SECTION

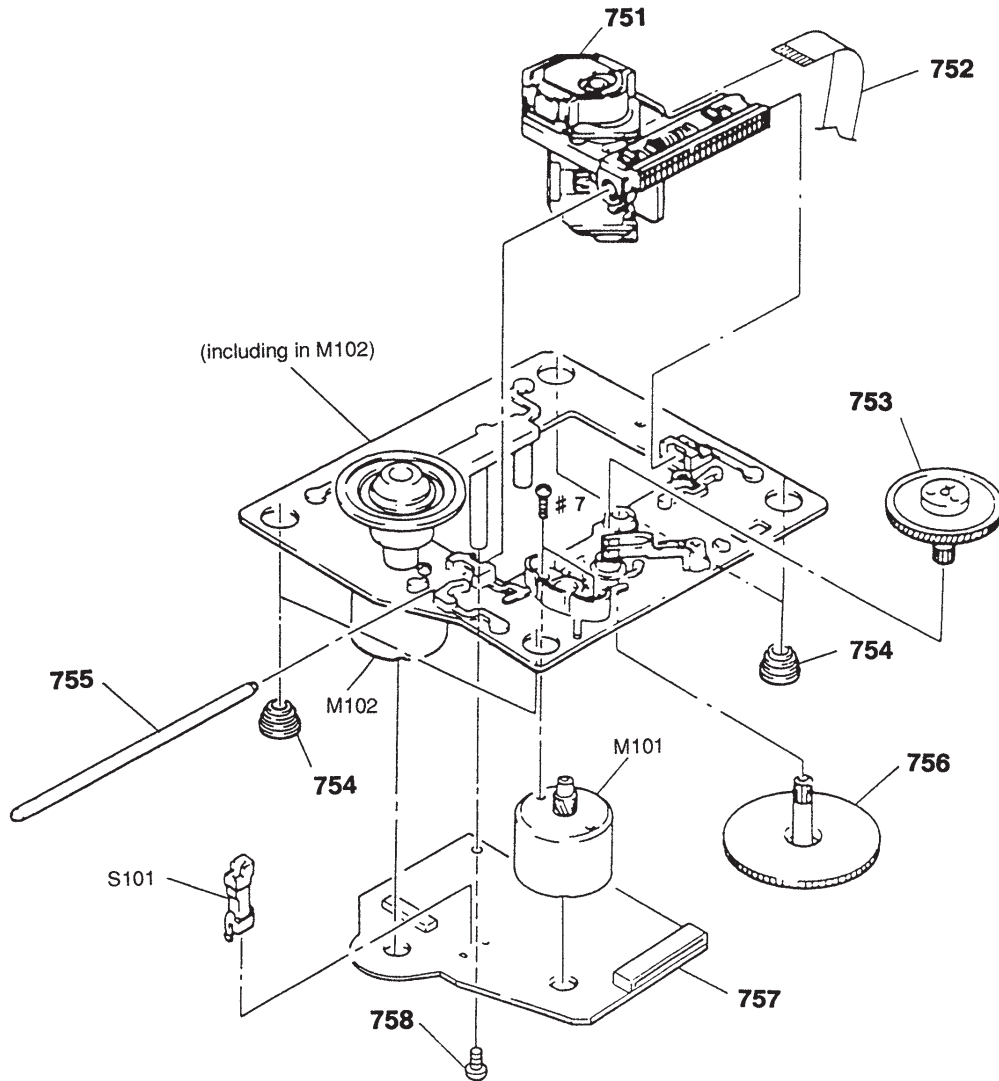


The components identified by mark \triangle or dotted line with mark \triangle are critical for safety. Replace only with part number specified.

Les composants identifiés par une marque \triangle sont critiques pour la sécurité. Ne les remplacer que par une pièce portant le numéro spécifié.

Ref.No.	Part No.	Description	Remark	Ref.No.	Part No.	Description	Remark
101	4-957-283-11	WASHER (5), STOPPER		* 118	1-647-363-11	LOADING MOTOR BOARD	
102	4-957-288-01	GEAR (MAIN)		119	X-4941-529-1	PULLEY ASSY	
103	4-957-287-01	GEAR (REV)		120	4-944-490-01	BELT (TIMING)	
104	4-957-286-01	GEAR (U/D)		* 121	4-957-556-11	SHEET, INSULATING (EXCEPT US, CND)	
105	1-466-996-11	ENCODER, ROTARY		* 122	4-957-555-11	SHEET, INSULATING (EXCEPT US, CND)	
106	X-4944-127-1	BRACKET (GEAR) ASSY		123	3-531-576-11	RIVET (EXCEPT US, CND)	
107	4-933-134-01	SCREW (+PTPWH M2.6X6)		* 124	A-4673-265-A	MAIN BOARD, COMPLETE (C365:E)	
108	4-948-503-01	SPRING (BU), COMPRESSION		* 124	A-4673-266-A	MAIN BOARD, COMPLETE (C265:AEP, UK, G, AUS/C365:AEP, UK, G, SP, MY, AUS)	
* 109	1-648-409-11	PC BOARD, FLEXIBLE		* 124	A-4673-386-A	MAIN BOARD, COMPLETE (US, CND)	
* 110	4-957-289-12	HOLDER (BU)		* 125	1-573-047-11	PIN, CONNECTOR (PC BOARD) 2P	
* 111	1-452-538-11	MAGNET		M801	A-4353-974-A	MOTOR ASSY, LOADING	
112	4-957-281-11	SPRING (LOCK LEVER)		\triangle S201	1-572-675-11	SWITCH, POWER VOLTAGE CHANGE (C365:E)	
113	4-957-279-11	LEVER, LOCK		\triangle T201	1-423-872-11	TRANSFORMER, POWER (US, CND)	
114	4-957-303-01	GEAR (LOADING C)		\triangle T201	1-423-992-11	TRANSFORMER, POWER (C265:AEP, UK, G, AUS/C365:AEP, UK, G, SP, MY, AUS)	
115	4-934-375-11	GEAR (LOADING B)		\triangle T201	1-423-993-11	TRANSFORMER, POWER (C365:E)	
116	4-957-285-11	LEVER, SET					
117	4-962-087-01	SPRING (S), TENSION					

**5-4. BASE UNIT SECTION
(BU-5BD13)**



The components identified by mark \triangle or dotted line with mark \triangle are critical for safety. Replace only with part number specified.

Les composants identifiés par une marque \triangle sont critiques pour la sécurité. Ne les remplacer que par une pièce portant le numéro spécifié.

Ref.No.	Part No.	Description	Remark	Ref.No.	Part No.	Description	Remark
\triangle 751	8-848-144-11	OPTICAL PICK-UP KSS-240A		757	A-4649-890-A	BD BOARD, COMPLETE	
752	1-575-001-11	WIRE, FLAT TYPE (12 CORE)		* 758	4-951-620-01	SCREW (2.6X8), +BVTP	
753	4-917-567-21	GEAR (M)		M101	X-4917-504-1	MOTOR ASSY (SLED)	
754	4-951-940-01	INSULATOR (BU)		M102	X-4917-523-4	BASE (OUTSERT) ASSY (SPINDLE MOTOR)	
755	4-917-565-01	SHAFT, SLED					
756	4-917-564-01	GEAR (P), FLATNESS		S101	1-572-085-11	SWITCH, LEAF (LIMIT)	