

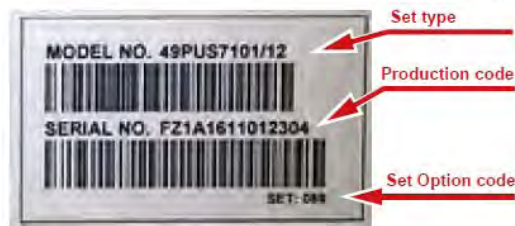
5.3 Set Option Code

For all models of TPM18.1E\_LA chassis, a SET OPTION code is used instead of the DISPLAY OPTION code.  
The Set Option Code feature allows using one single Set Option number to define all settings for a specific TV set type.

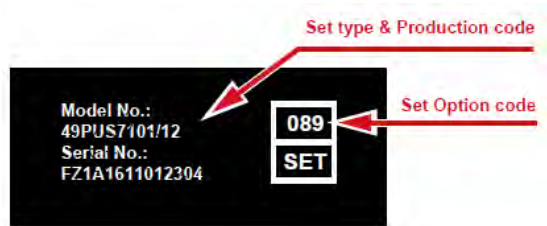
5.3.1 Where to find the Set Option Code

Refer to the stickers on the TV set. The Set Option Code (three digit decimal value), Set type and Production code can be read from two stickers matching the TV set:

- Family sticker, stuck on the Back Cover:



- Set Option code sticker, in general, stuck on the Deco frame:



5.3.2 How to set the Set Option Code after SSB Replacement

- 1. Take note of the Set Option Code of the TV set. Set Option Code, Set type and Production code can be read from two stickers on the TV set.
- 2. Switch "ON" the TV set.  
The modified TV set should start up with the default values.
- 3. Enter the Set Option Code.

Using a standard remote control, successively press:

"062598" + MEMU/HOME + "xxx",

- with "xxx" is the three digit decimal value of a valid Set Option Code (See below table), corresponding with the modified TV set, and MEMU/HOME is the button with the home icon.