



Service Manual

Freezer

AFG 361/G1

Model Version		Page
	AFG 361/G1	
	8549 361 01011	
	Technical data	2
	Spare part list	3
	Exploded view	4
	Circuit and Wiring diagram	5

Technical data

Dimensions

Height	140.0	cm
Width	59.2	cm
Depth	60.3	cm

Capacity

Total gross	243	l
Total net	203	l

Electrical connection

Voltage	220-240V
Frequency	50 Hz

Power consumption

in 24 hours	1.34	kWh
-------------	------	-----

Compressor (for service)

Type	BK 1116 ZH
Cooling capacity (CECOMAF)	154 W

Cooling agent

Type	R 134 a
Quantity	160 g

Thermostat

Elektronic

Freezing capacity

in 24 hours	24	kg
-------------	----	----

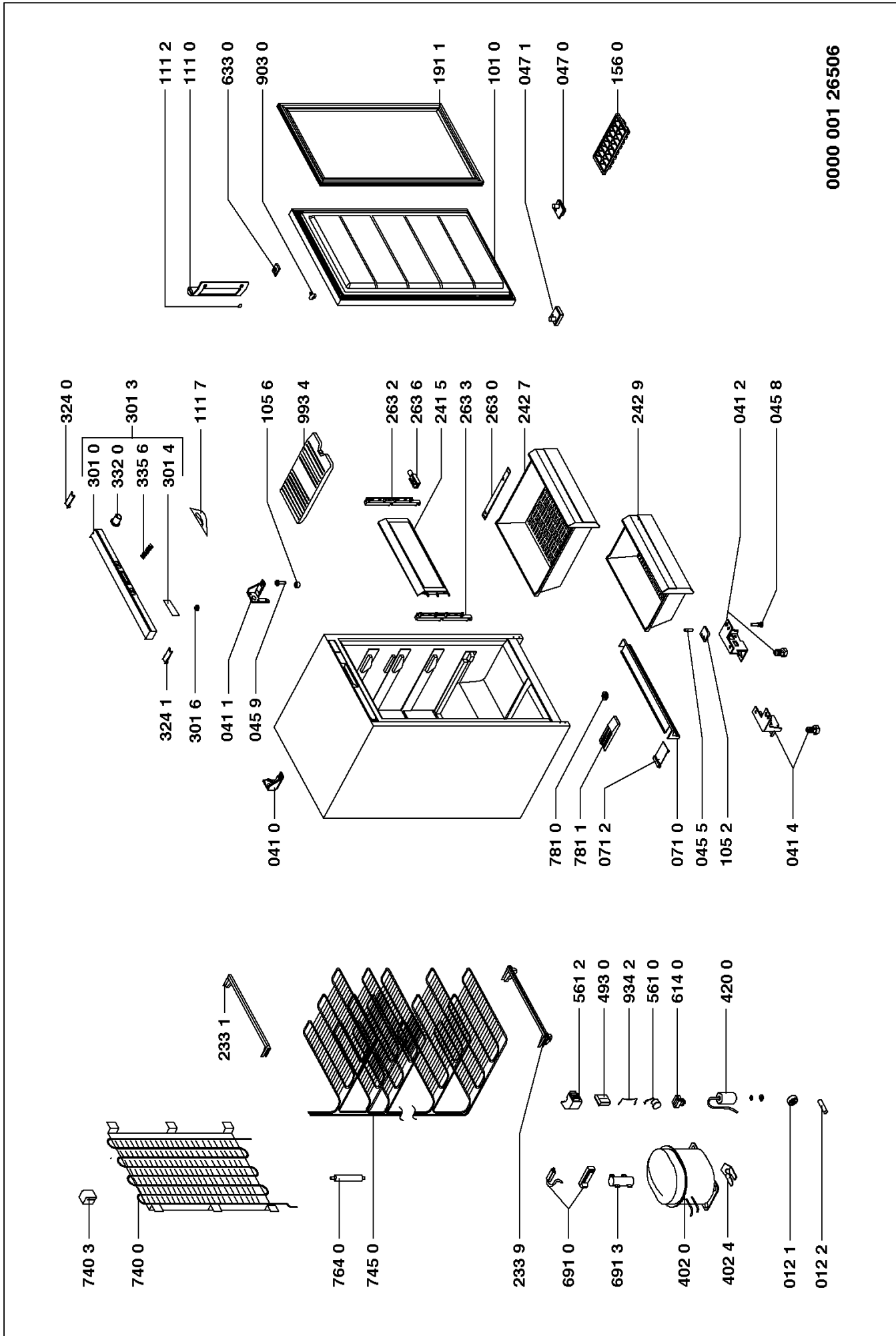
Spare part list

Model AFG 361/G1
Service No. 854936101011
Version 854936101011

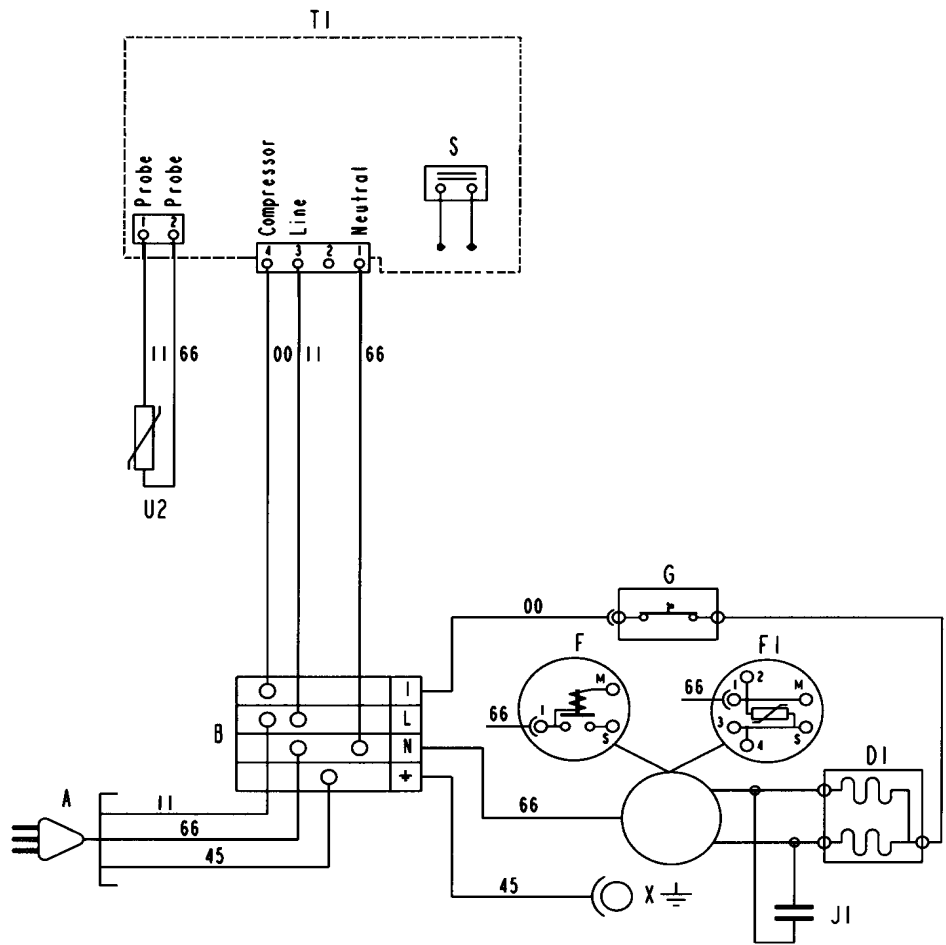
Pos. No.	12NC Code	Description
012 1	4819 528 78028	Roll
012 2	4819 535 38013	Axle
041 0	4819 417 19538	Hinge
041 1	4819 417 19537	Hinge
041 2	4819 417 19581	Hinge,lower
041 4	4819 417 19582	Hinge,lower
045 5	4819 535 38056	Shaft
045 8	4819 535 38061	Pin for hinge
045 9	4819 535 38093	Extension piece
047 0	4819 532 68842	Bushing
047 1	4819 532 68843	Bushing
071 0	4819 440 19833	Plinth
071 2	4819 460 78538	Insert
101 0	4819 442 68863	Door, freezer
105 2	4819 466 99106	Spacer
105 6	4819 532 68476	Bushing
111 0	4819 498 78294	Handle,door
111 2	4819 462 79466	Cover
111 7	4819 459 19372	Plate,name
156 0	4819 418 78977	Tray
191 1	4819 468 18141	Magnetic seal
233 1	4819 404 78693	Support
233 9	4819 404 79385	Holder
241 5	4819 442 78361	Door,flap
242 7	4819 458 68117	Basket
242 9	4819 458 68116	Basket
263 0	4819 462 38886	Guide
263 2	4819 404 79392	Holder
263 3	4819 404 79393	Holder
263 6	4819 535 98485	Shaft
301 0	4819 452 99738	Control panel
301 3	4819 452 99827	Front
301 4	4819 460 78566	Insert
301 6	4819 462 79258	Stopper
324 0	4819 462 58314	Cover,hinge
324 1	4819 462 58315	Cover,hinge
332 0	4819 410 28974	Button
335 6	4819 492 68794	Spring
402 0	4819 360 38682	Compressor
402 4	4819 466 89405	Clip
420 0	4819 121 18173	Capacitor
493 0	4819 462 79046	Lid f. connection block
561 0	4819 282 28626	Protect,motor AC55BJ4
561 2	4819 290 68358	Connect.block
614 0	4819 280 68335	Relay PTC-Starting device
633 0	4819 276 18355	Switch
691 0	4819 210 78089	Probe
691 3	4819 404 78958	Support
740 0	4819 511 48527	Condenser
740 3	4819 466 98259	Striker
745 0	4819 511 48637	Condenser
764 0	4819 480 28144	Dryer
781 0	4819 532 28145	Defroster plug
781 1	4819 418 49577	Gutter
903 0	4819 535 18117	Stopper

Pos. No.	12NC Code	Description
934 2	4819 492 68431	Spring
993 4	4819 442 78172	Ice pack
993 9	4819 310 39465	Accessories not shown

Exploded view



Circuit and Wiring diagram



4619 500 88320

- DI FREEZER COMPRESSOR
- F STARTING RELAY
- FI P.T.C.
- G OVERLOAD PROTECTOR
- J1 RUNNING CAPACITOR
- S SWITCH-REED
- TI ELECTRONIC MODUL
- U2 FREEZER SENSOR
- A PLUG
- B MAIN CONNECTING BLOCK
- X COMPRESSOR EARTHING
- 00 BLACK
- 11 BROWN
- 22 RED
- 33 ORANGE
- 44 YELLOW
- 55 GREEN
- 66 BLUE
- 77 VIOLET
- 88 BLUE-SKY
- 99 WHITE

