

HISTORY INFORMATION FOR THE FOLLOWING MANUAL:

Service Procedure for Panel, Board and Software Change / Upgrade

Version	Date	Subject
1	04/2017	1 st Issue.

GN3TR CHASSIS
KF, KFW segment

SONY®

9-888-719-01

TABLE OF CONTENTS

<u>Section Title</u>	<u>Page</u>
1. NOTES	
1-1. Replacing Service Parts for GN3TR Series	3
1-2. USB Memory Format	3
1-3. USB Update file Preparation	4
2-1. Service Procedure for Board Replacement	5
3-1. Service Procedure for T-Con Replacement	6
4-1. Service Procedure for Panel Module Replacement	7
Appendix	8-10

SECTION 1 NOTES

1-1. Replacing Service Parts for GN3TR Series

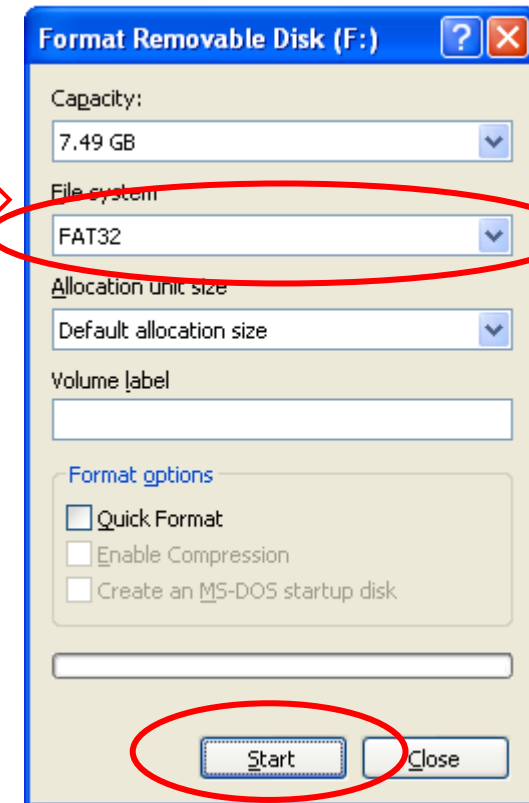
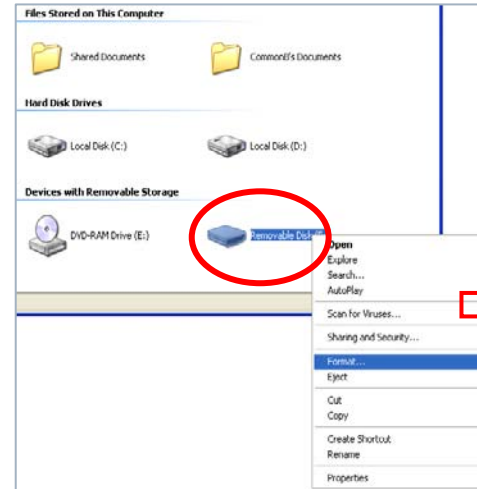
1. After replacing the B** board, Panel, or T-Con you need to upgrade Software by using the USB memory. (Upgrade Software even if replacing the Panel only.)
2. Before upgrading Software, be sure to disconnect all cables.
3. After upgrading the version, you need to confirm the NVM Version, Model Name, Software version and Serial Number from the Service menu. (Incorrect settings affect the set's capabilities.)
4. When upgrading Software, be sure to download the most recent version. (If the version of Software already on the repair board is newer than the version of Software for upgrade, Software is not upgraded.)

Remark : List of (B Board); please refer to each segment Service Manual for details.**

SAPL131008 - 2/8/2022 8:25 AM

1-2. USB Memory Format.

1. There is no special restriction on USB memory. If you connect the USB memory to the computer and it is recognized, you can use it.
2. The USB memory should be formatted in FAT32.



USB recommendation:

USB media must be Sony product
And the capacity must more than 2GB.



USB Format

1-3. USB Update file Preparation [Making procedure]

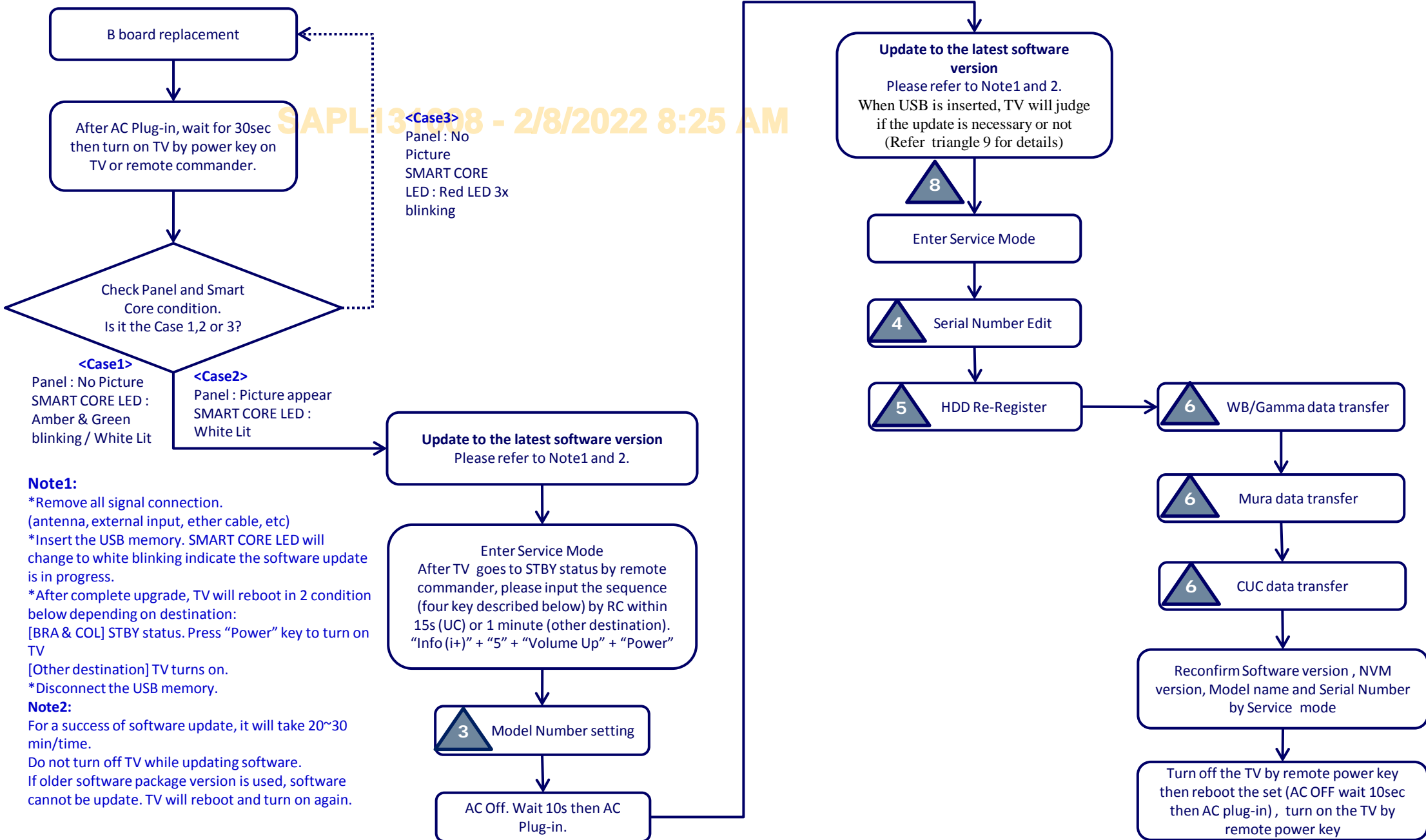
1. Get a dtvota file for upgrade.
2. Extract dtvota file. (e.g. sony_dtvota_****_*****_***.zip)
**** may differ depend on the destination.*
3. Confirm file name. (e.g. sony_dtv*****_*****_*****.pkg)
4. Copy the file under root directory of USB device.

Note: The upgrade will not be performed if name of the file is modified.



Note: Recommend to use USB Port 2 or 3 for software update.

2-1. Service Procedure for B-Board Replacement

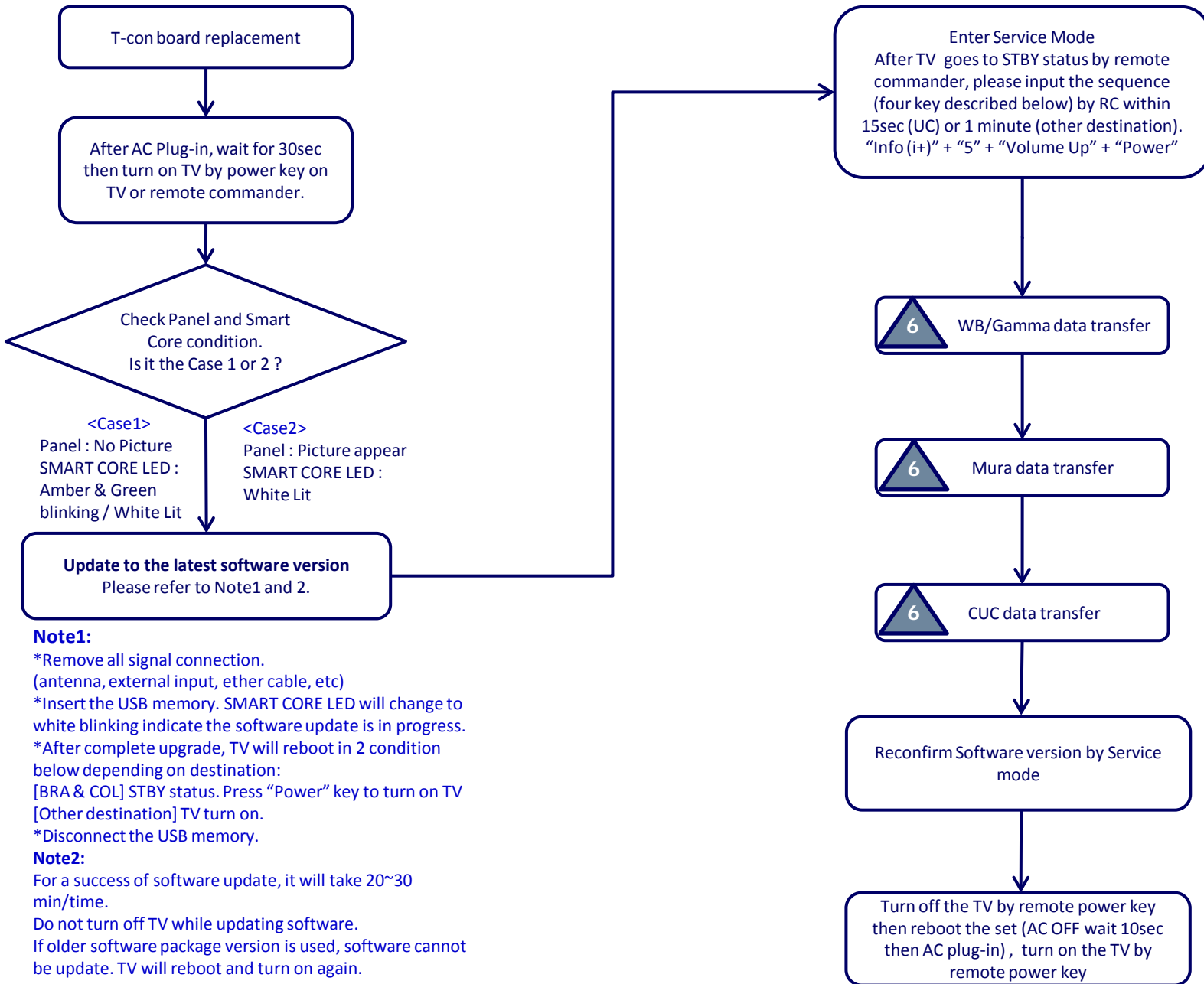


SAPL134498 - 2/8/2022 8:25 AM

Note1:
 *Remove all signal connection. (antenna, external input, ether cable, etc)
 *Insert the USB memory. SMART CORE LED will change to white blinking indicate the software update is in progress.
 *After complete upgrade, TV will reboot in 2 condition below depending on destination:
 [BRA & COL] STBY status. Press "Power" key to turn on TV
 [Other destination] TV turns on.
 *Disconnect the USB memory.

Note2:
 For a success of software update, it will take 20~30 min/time.
 Do not turn off TV while updating software.
 If older software package version is used, software cannot be update. TV will reboot and turn on again.

3-1. Service Procedure for T-con Replacement



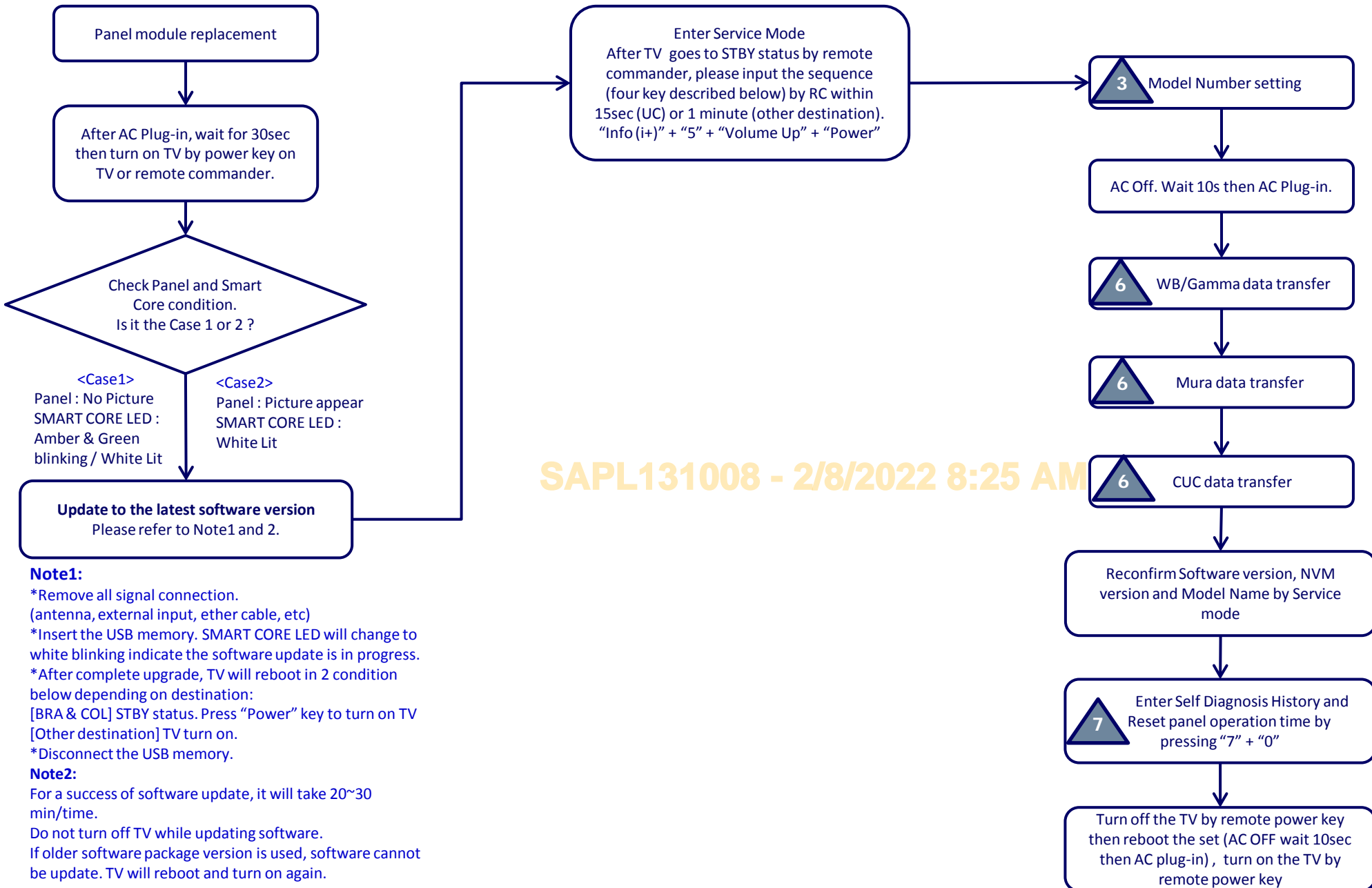
Note1:

- *Remove all signal connection. (antenna, external input, ether cable, etc)
- *Insert the USB memory. SMART CORE LED will change to white blinking indicate the software update is in progress.
- *After complete upgrade, TV will reboot in 2 condition below depending on destination:
[BRA & COL] STBY status. Press "Power" key to turn on TV
[Other destination] TV turn on.
- *Disconnect the USB memory.

Note2:

- For a success of software update, it will take 20~30 min/time.
- Do not turn off TV while updating software.
- If older software package version is used, software cannot be update. TV will reboot and turn on again.

4-1. Service Procedure for Panel Module Replacement

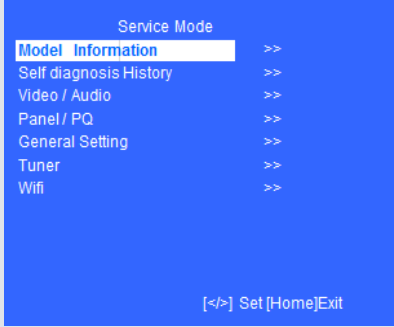
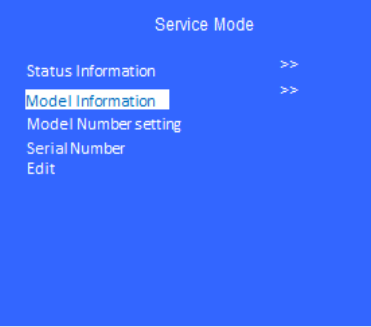
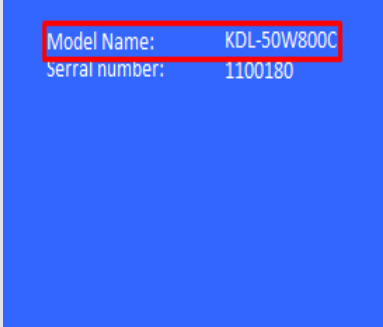
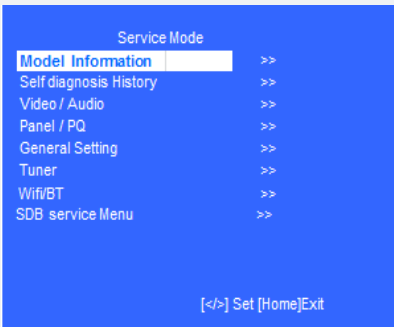
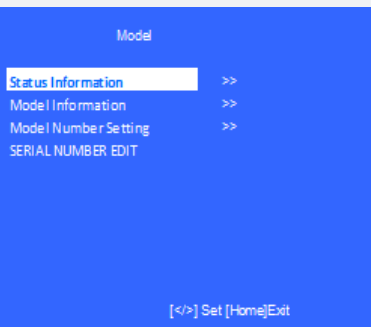
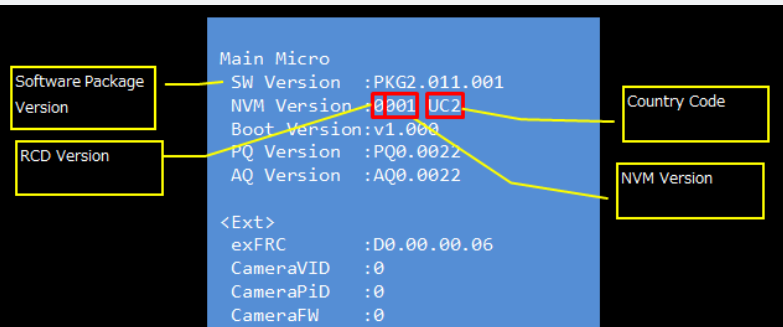
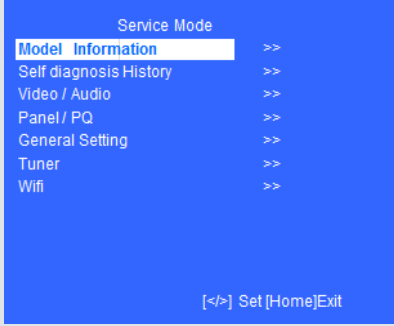
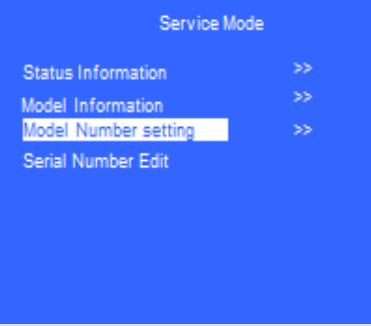
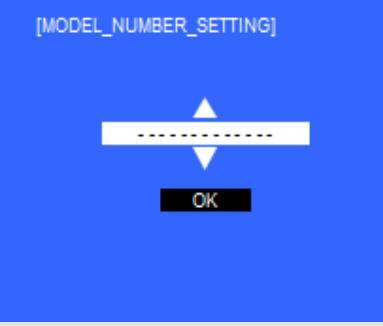
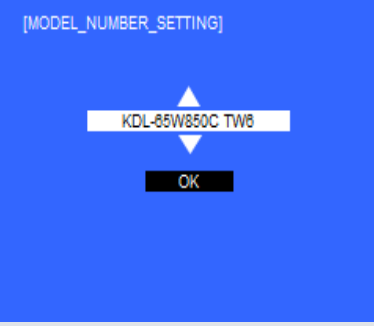


SAPL131008 - 2/8/2022 8:25 AM

Note1:
 *Remove all signal connection. (antenna, external input, ether cable, etc)
 *Insert the USB memory. SMART CORE LED will change to white blinking indicate the software update is in progress.
 *After complete upgrade, TV will reboot in 2 condition below depending on destination:
 [BRA & COL] STBY status. Press "Power" key to turn on TV [Other destination] TV turn on.
 *Disconnect the USB memory.


Note2:
 For a success of software update, it will take 20~30 min/time.
 Do not turn off TV while updating software.
 If older software package version is used, software cannot be update. TV will reboot and turn on again.

Appendix

Point	Details/Remarks/Notes			
<p style="text-align: center;">1</p> <p style="text-align: center;">Model name check</p>				
<p style="text-align: center;">2</p> <p style="text-align: center;">SW version, RCD version, NVM version and Country code check</p>				
<p style="text-align: center;">3</p> <p style="text-align: center;">Model Number Setting</p>				

Appendix

Point	Details/Remarks/Notes
-------	-----------------------


4
 Serial Number Edit

Service Mode Model Information >> Self diagnosis History >> Video / Audio >> Panel / PQ >> General Setting >> Tuner >> Wifi >> [</>] Set [Home]Exit	Service Mode Status Information >> Model Information >> Model Number setting >> Serial Number Edit	Service Mode Status Information >> Model Information >> Model Number setting Serial Number Edit - - - - -	Service Mode Status Information >> Model Information >> Model Number setting Serial Number Edit 1 2 3 4 5 6 7 <div style="background-color: red; color: white; padding: 5px; text-align: center;"> Input data correct? <input type="button" value="Yes"/> <input type="button" value="No"/> </div>
---	--	---	--

Input change is only 1 time in initial blank status(All "Null"). Be carefull not to make a mistake !


5
 HDD Re-register
 [JP/AEP/AUS/NZ only]

Service Mode Model Information >> Self diagnosis History >> Video / Audio >> Panel / PQ >> General Setting >> Tuner >> Wifi >> [</>] Set [Home]Exit	General Setting Back << Aging mode <[Off]> Ship Confirm >> HDD Performance Check >> HDD Re-register >> Update CI+ Credential >> ECS_Enable <[Off]>	HDD Re-Register Result <[OK]> Back <<
---	---	---

Execute this command with connecting HDD-USB.
 Repeat it until all HDD used is registered.

- Forgetting registration -> Recorded contents cannot be seen.
- Unknown HDD -> Error display

* Not register from UI because HDD will be formatted.


6
 WB/Mura/CUC data transfer

Service Mode Model Information >> Self diagnosis History >> Video / Audio >> Panel / PQ >> General Setting >> Tuner >> Wifi >>	Panel/PQ Back << WB Adjustment >> WB/Mura/CUC data transfer >>	Back << WB/Gamma data transfer <[1.T-con to SoC]> Mura data transfer <[1.T-con to SoC]> CUC data transfer <[1.T-con to SoC]> <div style="background-color: black; color: white; padding: 2px; display: inline-block;">Start</div>
---	---	---

	B-board replace	T-con replace	Panel replace
WB/Gamma	1.T-con to Soc	0.Soc to T-con	0.Soc to T-con
Mura	1.T-con to Soc	0.Soc to T-con	1.T-con to Soc
CUC	1.T-con to Soc	0.Soc to T-con	1.T-con to Soc

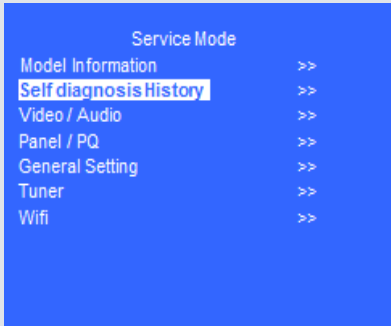
Press Left/Right arrow key to choose <0. SoC to T-con> or <1. T-con to SoC >.
 Don't forget to press <Enter> key. Even if you don't change the setting, it must be required to press <Enter> key at each item.
 After above operation step, press Up/Down arrow key to choose "Start", and press <Enter> key.
 Wait 15sec and more to finish data transfer.

Appendix

Point	Details/Remarks/Notes
-------	-----------------------

7

Reset Panel Operation Time



8

2nd Software Upgrade condition

Condition 1: If there is no update of RCD version and recipe condition data is not changed, screen below is appears, then software update is not necessary and can be skipped.



Condition 2: If RCD version is updated or recipe condition data is changed, screen below appears. Then TV will reboot when the progress bar reaches 100%, and the software upgrade will run as usual.



SAPL131008 - 2/8/2022 8:25 AM