

Symptom

Set does not start-up or swithes off after start-up - Tray does not open - Set does not play any disc - SABL IC7402 is defective

Cure

The modification / repair is done as follows:

1. Add capacitors CER2 1812X5R 16 V 22U PM10R to location 2443 and 2433 on the pc board (see picture step 1 & 2)
2. Solder a zener diode DIO SUP SA12A A(ONSE)R across capacitor 2443 (see picture step 2)
3. Replace SABL IC7402 SA56202TW with improved version which is temporarily indicated with white dot (see picture). ICs produced from wk516 onwards will no longer have the white dot indication.

All the parts necessary for the modification/repair are available as SABL IC repair kit (order 12NC: 9965 000 29182)

REMARKS :

There is no need to replace the VAM drive when the SABL IC fails.
New ICs are implemented on sets produced from wk0515 onwards.

SA56202 SAMPLE INK DOTS USING MARKEM INK

OPTR

A



B



C



D



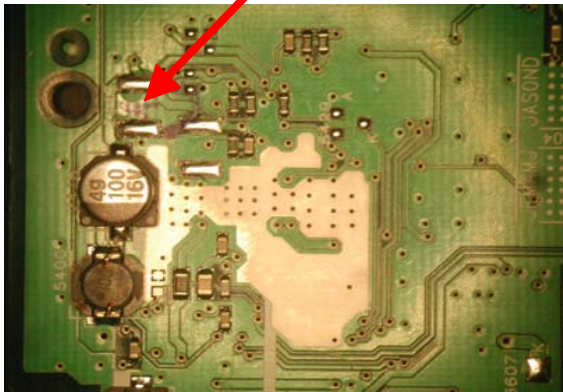
E



SABL IC Rework pictures

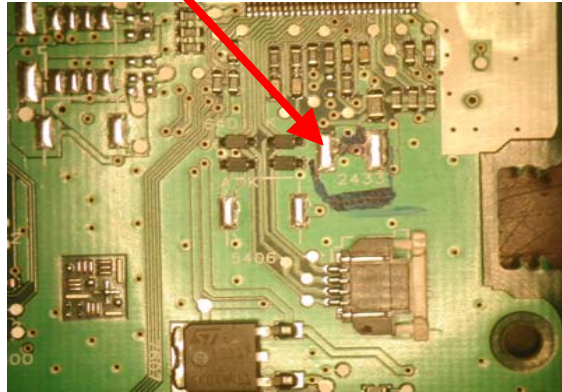
Step 1

location 2443



Step 2

location 2433



Step 3

Add diode here with cathode on the right side

