

Can also be used for
691136 & 691137

THEFTORD ACCOMPANIES YOU.

Repair instruction

Description: Power Board Housing

Part Number: 634420/634421/634422/634423

Look for Service Centres, Point of Sale addresses and other information on: www.thetford.eu

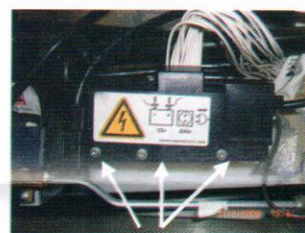
Version:	V1
Date:	December 2010
Tools required:	Torx T10, Philips screwdriver, 7mm nut spinner

**NOTE: make sure to wear ESD protection/
f.i. ESD bracelet**



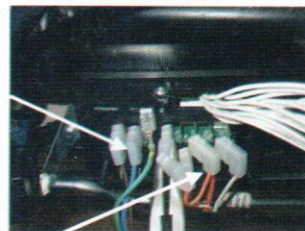
A

If the fridge needs to be removed please make sure this is done by a qualified competent person. Isolate the fridge from all power sources. Once you have access to the power board start by removing the 3 torque screws holding the cover in place.



B

Once the cover has been removed, the mains and 12v connections can be disconnected *.



C

The power board can now be removed by undoing the two 7mm nut screws, one each side of the board, please note that the gas solenoid valve may need to be rotated to access one of the screws.



D

The power board and housing can now be pulled clear of the fridge for ease of access.

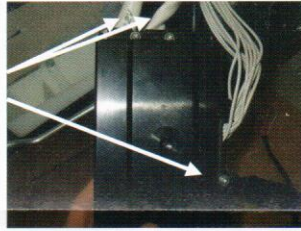


* Please note, the colour of the 12v cables illustrated may not match those of the fridge you are working on.

THETFORD ACCOMPANIES YOU.

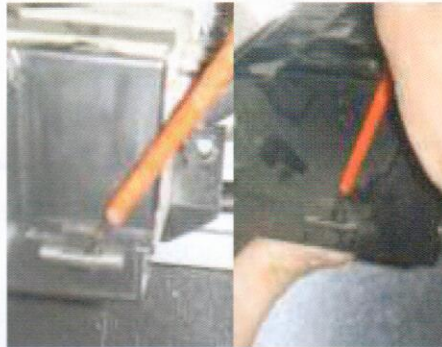
E

Now you have clear access to the board remove the 3 torque screws from the top of the board housing.



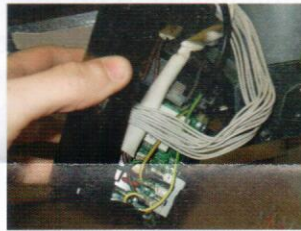
F

Using a flat head screwdriver undo the 2 clips holding the top of power board cover in place.



G

The power board lid can now be removed giving you access to the circuit boards and wiring beneath.



H

To disconnect the power board start by removing the earth bar and Mains element.



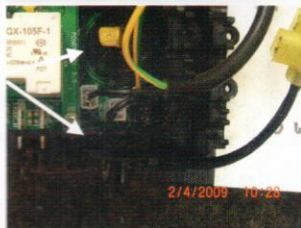
I

Also remove the 12v element connections and the white wiring harness taking care to pull the black socket and not the wires.



J

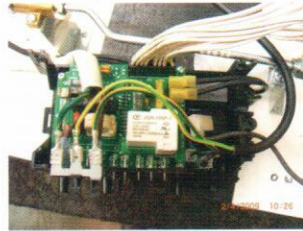
And finally the electrode lead and gas valve leads can be removed.



THETFORD ACCOMPANIES YOU.

K

The replacement board can now be reconnected connecting the wires in reverse as above.



L

Install heater cables, spark electrode, solenoid cable and earth cables on same position.



M

Place strainrelief. Torque 1 Nm.



N

Make sure also white wire harness is installed.



O

Place cover and mount cover with 2 screws to bottom. Torque 1 Nm.



P

Place tywrap around white wire harness & heater cables.



Q

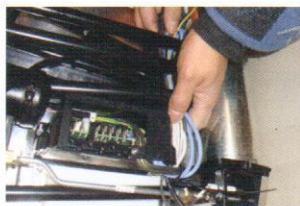
Install power board housing to back of fridge by 2 screws. Torque 2 Nm.



THETFORD ACCOMPANIES YOU.

R

Pull cables away from burner and fix them with a tywrap to tube.



S

Install power cables. Attention: Make sure the sleeves are placed in the strainrelief as indicated in picture.



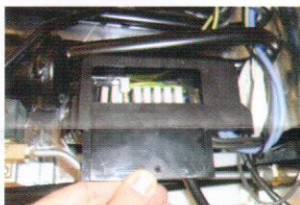
T

Place strainrelief by mounting 2 screws. Torque 1 Nm.



U

Place lid by sliding it into the power board housing and fix it by 1 screw. Torque 1 Nm.



V

Assemble solenoid cable and rotate. Torque handtight.



The fridge can now be re-installed. Before testing the fridge please ensure a soundness test is carried out by a competent qualified person.

