






Achtung, wichtiger Hinweis! Kodierung ist unbedingt entsprechend des zu reparierenden Gerätes einzustellen, da sonst Folgeschäden eintreten.

Attention, important note! Code must absolutely be adjusted to the unit to be repaired. Since otherwise consequential damage may occur.

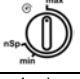
Attention, remarque importante! Le codage doit impérativement être effectué en fonction de l'appareil à réparer. Sinon risques de dommages.

Legende / legend / Légende

Qck	Schnell / Schnell Waschen	Short Wash / Quick Wash	Rapide / Lavage rapide	
nSp	Spülstop	Rinsehold	Arrêt cuve pleine	
rSp	Drehzahlabwahl	Reduced Spin	Sélection vitesse	
Xrin	Extraspülen / Spülen plus	Extra Rinsing / Rinse Plus	Rinçage plus / Niveau plus	
LI	Knitterschutz / Bügelleicht	Less Ironing / Reduced Ironing	Antifroissage / Rep. facile	



S1 Siemens

4	5	6		Tasten auf Blende Buttons on panel Touches sur bandeau		
on	on	on	nein / no			
on	on	on	nein / no	nSp		
on	on	on	nein / no	nSp	rSp	
on	on	off	nein / no	nSp	Qck	
on	on	on	nein / no	nSp	rSp	Qck
on	off	on	nein / no	nSp	rSp	Xrin
on	off	off	nein / no	nSp	Qck	Xrin
on	off	off	nein / no	nSp	Qck	Xrin rSp
off	on	on	ja/yes			
off	on	off	ja/yes			Li
off	off	on	ja/yes			Qck
off	off	off	ja/yes			Xrin
off	on	off	ja/yes		Xrin	Li
off	off	off	ja/yes		Qck	Xrin
off	on	off	ja/yes	Qck	Xrin	Li

Achtung!

Handhabungsvorschriften beachten. Elektrostatisch gefährdete Bauelemente!

Attention!

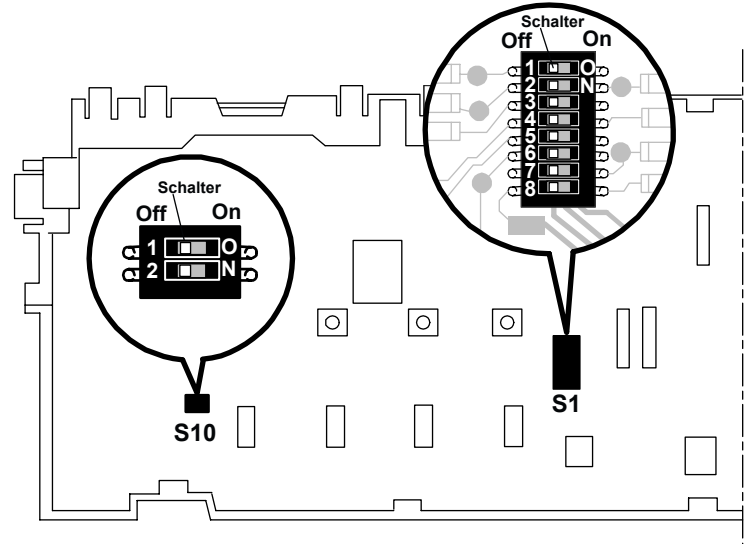
Observe the handling instructions. Static electricity can damage components

Attention!

Respecter les instructions de manipulation. Composants électrostatiques dangereux !

S1 Bosch

4	5	6	Tasten auf Blende Buttons on panel Touches sur bandeau			
on	on	on				nein / no
on	on	on			nSp	nein / no
on	on	on		Qck	nSp	nein / no
on	on	off		rSp	nSp	nein / no
on	off	on		Xrin	nSp	nein / no
on	off	on	Qck	rSp	nSp	nein / no
on	on	on	Xrin	rSp	nSp	nein / no
on	on	off	Xrin	Qck	nSp	nein / no
on	on	on	Xrin	Qck	rSp	nSp
off	on	on				ja/yes
off	on	on			Qck	ja/yes
off	off	on			Xrin	ja/yes
off	on	off		Li	Qck	ja/yes
off	off	on		Qck	Xrin	ja/yes
off	on	off	Li	Xrin	Qck	ja/yes



S1 Schleudern/spinning/essorage

1	2	3	UpM / rpm
off	off	off	600
off	off	on	700
off	on	off	800
off	on	on	900
on	off	off	1000
on	off	on	1100
on	on	off	1200
on	on	on	(1300)1220

S1 Warmwasser / Hotwater / Eau chaude / AQ-Stop

7	
on	Standard oder / or / ou AQ-Stop
off	Warmwasser / Hotwater / Eau chaude

Variante / variants / Variante

8	
on	Variante / variant / Variante
on	Bosch
off	Siemens

S10

S10	1	2
Siemens	off	on
Bosch	on	off

Module nur in Originalverpackungen transportieren!

The module should be transported in its original packaging!

Ne transporter les modules que dans leur emballage d'origine!