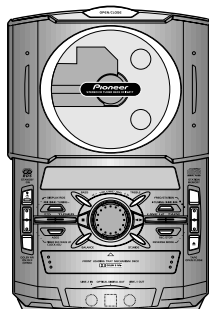


Service Manual

Pioneer



ORDER NO.
RRV2123

CD TUNER DECK XC-IS21T

THIS MANUAL IS APPLICABLE TO THE FOLLOWING MODEL(S) AND TYPE(S).

Type	Model	Power Requirement	Remarks
	XC-IS21T		
ZYXJ	O	DC power supply from other system	
ZVXJ	O	DC power supply from other system	

● **This product is a system(s) component.**

This product does not function properly when independent; to avoid malfunctions, be sure to connect it to the prescribed system component(s), otherwise damage may result.

Component	System	Service Manual	Remarks
	IS-21T		
CD TUNER DECK	XC-IS21T	RRV2123	This service manual
STEREO POWER AMPLIFIER	M-IS21	RRV2129	
SPEAKER SYSTEM	S-IS21	RRV2128	

CONTENTS

1. SAFETY INFORMATION	2	7.2 DIAGNOSIS	61
2. EXPLODED VIEWS AND PARTS LIST	3	7.2.1 DISASSEMBLY	61
3. BLOCK DIAGRAM AND SCHEMATIC DIAGRAM	16	7.2.2 SEQUENCE AFTER THE POWER ON	65
4. PCB CONNECTION DIAGRAM	34	7.2.3 SINGLE OPERATION METHOD	66
5. PCB PARTS LIST	46	7.2.4 PCB LOCATION	68
6. ADJUSTMENT	51	8. PANEL FACILITIES AND SPECIFICATIONS	70
7. GENERAL INFORMATION	57		
7.1 PARTS	57		
7.1.1 IC	57		

PIONEER ELECTRONIC CORPORATION 4-1, Meguro 1-Chome, Meguro-ku, Tokyo 153-8654, Japan
 PIONEER ELECTRONICS SERVICE, INC. P.O. Box 1760, Long Beach, CA 90801-1760, U.S.A.
 PIONEER ELECTRONIC (EUROPE) N.V. Haven 1087, Keetberglaan 1, 9120 Melsele, Belgium
 PIONEER ELECTRONICS ASIACENTRE PTE. LTD. 253 Allexandra Road, #04-01, Singapore 159936
 © PIONEER ELECTRONIC CORPORATION 1999

1. SAFETY INFORMATION

This service manual is intended for qualified service technicians; it is not meant for the casual do-it-yourselfer. Qualified technicians have the necessary test equipment and tools, and have been trained to properly and safely repair complex products such as those covered by this manual. Improperly performed repairs can adversely affect the safety and reliability of the product and may void the warranty. If you are not qualified to perform the repair of this product properly and safely, you should not risk trying to do so and refer the repair to a qualified service technician.

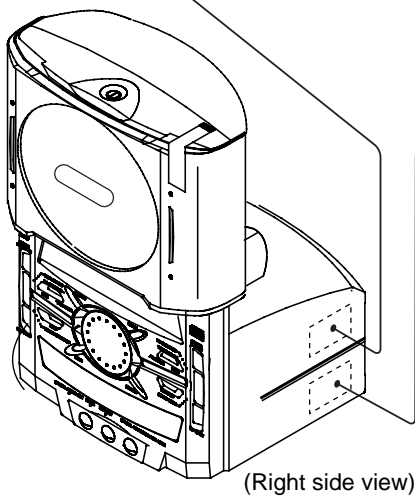
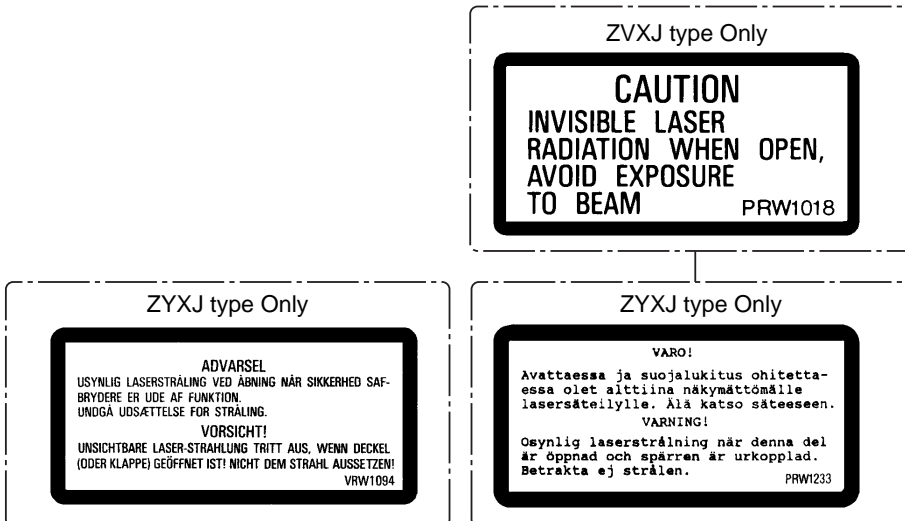
— IMPORTANT —

THIS PIONEER APPARATUS CONTAINS LASER OF CLASS 1. SERVICING OPERATION OF THE APPARATUS SHOULD BE DONE BY A SPECIALLY INSTRUCTED PERSON.

— LASER DIODE CHARACTERISTICS —

MAXIMUM OUTPUT POWER: 5 mw
WAVELENGTH: 708-785 nm

LABEL CHECK



— Additional Laser Caution —

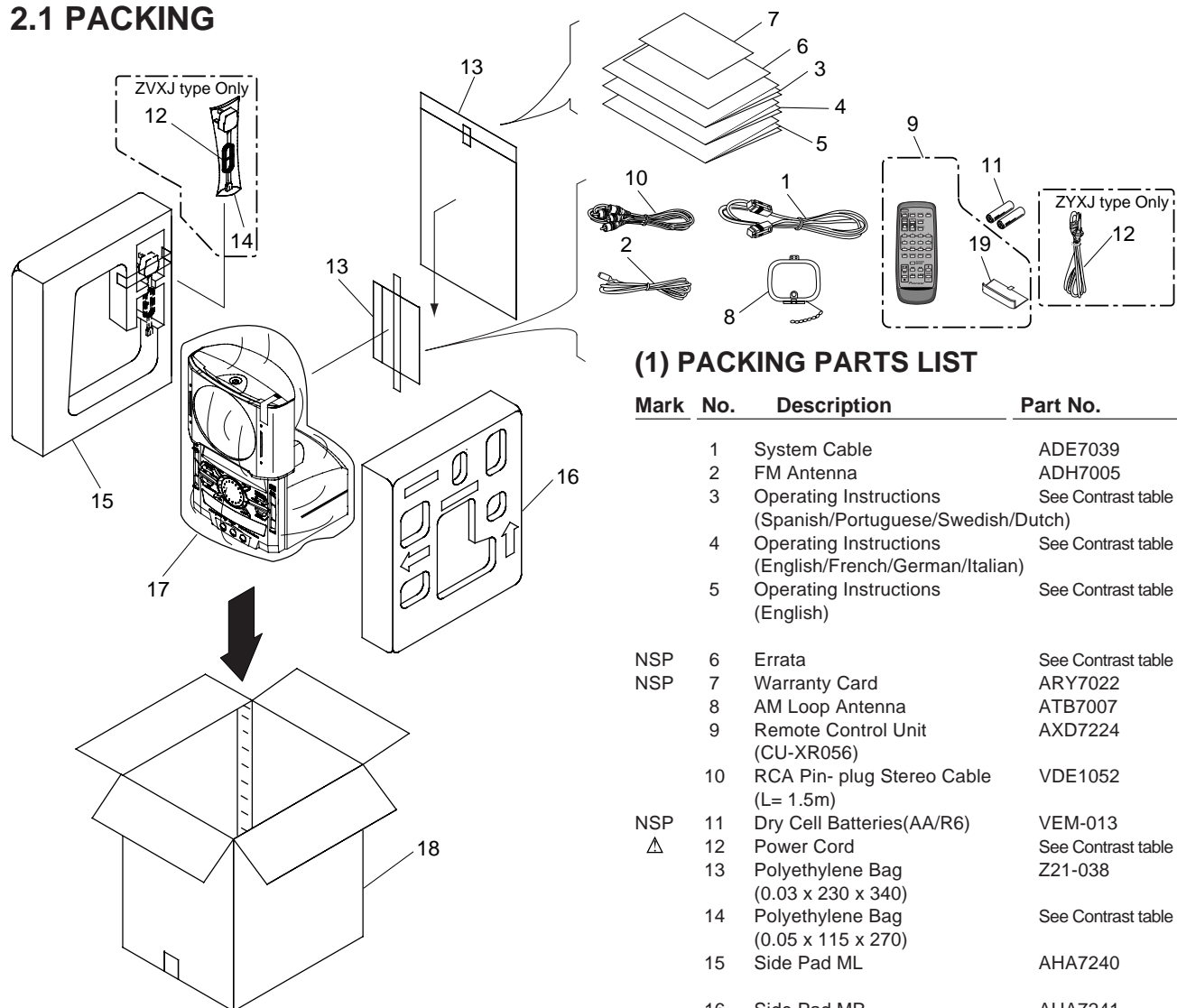
- Laser Interlock Mechanism**
The loading position detect switch (in CD mechanism assembly) is set to "CLMP ON(CD CLOSE)" (ON:low level,OFF:high level) position, the system control IC(IC5501) get the "CLMP" signal, and hand the laser "LDON" signal to IC1101.
Then a laser diode can be lighted except when the level of signal CLMP is low.
The interlock also does not function in the test mode*.
Laser diode oscillation will continue, if pin 1 of CXA1821M (IC1101) on the CDMAIN UNIT is connected to GND, or pin 19 is connected to low level (ON), or else the terminals of Q1101 are shorted to each other (fault condition).
- When the cover is opened, close viewing of the objective lens with the naked eye will cause exposure to a Class 1 laser beam.

* : Refer to page 54.

2. EXPLODED VIEWS and PARTS LIST

- NOTES:
- Parts marked by "NSP" are generally unavailable because they are not in our Master Spare Parts List.
 - The Δ mark found on some component parts indicates the importance of the safety factor of the part. Therefore, when replacing, be sure to use parts of identical designation.
 - Screws adjacent to \blacktriangledown mark on the product are used for disassembly.

2.1 PACKING



(1) PACKING PARTS LIST

Mark	No.	Description	Part No.
	1	System Cable	ADE7039
	2	FM Antenna	ADH7005
	3	Operating Instructions (Spanish/Portuguese/Swedish/Dutch)	See Contrast table (2)
	4	Operating Instructions (English/French/German/Italian)	See Contrast table (2)
	5	Operating Instructions (English)	See Contrast table (2)
NSP	6	Errata	See Contrast table (2)
NSP	7	Warranty Card	ARY7022
	8	AM Loop Antenna	ATB7007
	9	Remote Control Unit (CU-XR056)	AXD7224
	10	RCA Pin-plug Stereo Cable (L= 1.5m)	VDE1052
NSP	11	Dry Cell Batteries(AA/R6)	VEM-013
Δ	12	Power Cord	See Contrast table (2)
	13	Polyethylene Bag (0.03 x 230 x 340)	Z21-038
	14	Polyethylene Bag (0.05 x 115 x 270)	See Contrast table (2)
	15	Side Pad ML	AHA7240
	16	Side Pad MR	AHA7241
	17	Packing Sheet	AHG7053
	18	Packing Case	AHD7750
	19	Battery Cover	AZA7331

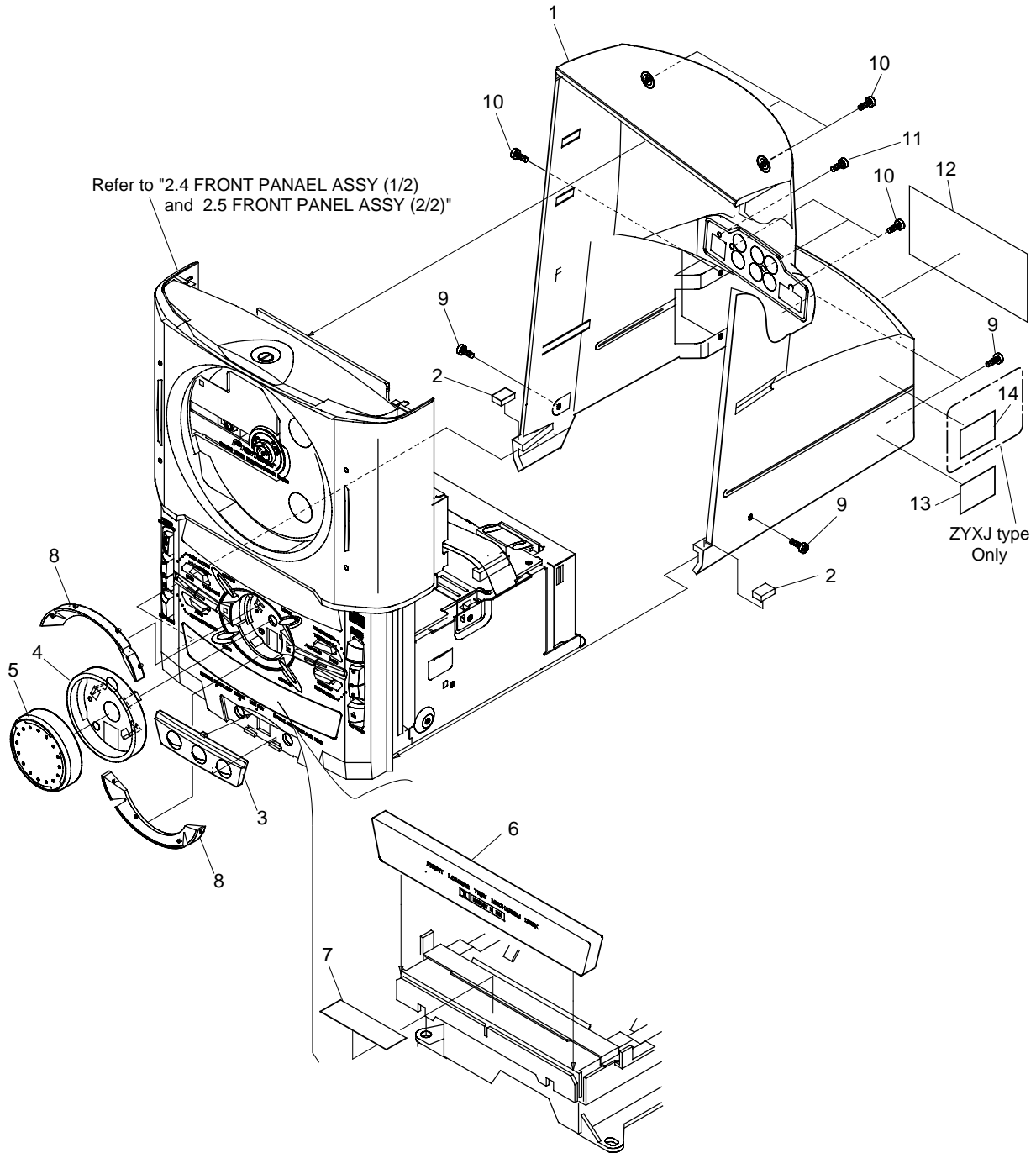
(2) CONTRAST TABLE

XC-IS21T/ZYXJ and ZVXJ are constructed the same except for the following:

Mark	No.	Symbol and Description	Part No.		Remarks
			ZYXJ type	ZVXJ type	
NSP Δ	3	Operating Instructions (Spanish/Portuguese/Swedish/Dutch)	ARC7255	Not used	
	4	Operating Instructions (English/French/German/Italian)	ARE7225	Not used	
	5	Operating Instructions (English)	Not used	ARB7197	
	6	Errata	ARX7027	ARX7028	
	12	Power Cord	XDG3001	ADG1156	
	14	Polyethylene Bag (0.05 x 115 x 270)	Not used	Z21-013	

XC-IS21T

2.2 EXTERIOR (1/2)



(1) EXTERIOR (1/2) PARTS LIST

Mark	No.	Description	Parts No.
	1	Rear Cover	AMC7029
	2	Cussion Rubber	AEB7154
	3	Jack Door	AAN7188
	4	Jog Lens	AAK7651
	5	Jog Knob	AAA7005
NSP	6	Tray Cap	AAK7622
	7	Tray Seal	RRW1162
	8	Jog Escutcheon	AAK7620
	9	Screw	BBZ30P080FMC
	10	Screw	VPZ30P100FMC
NSP	11	Screw	BMZ30P060FZK
	12	Name Label	AAL7225
	13	Caution Label	See Contrast table (2)
	14	Caution Label	See Contrast table (2)

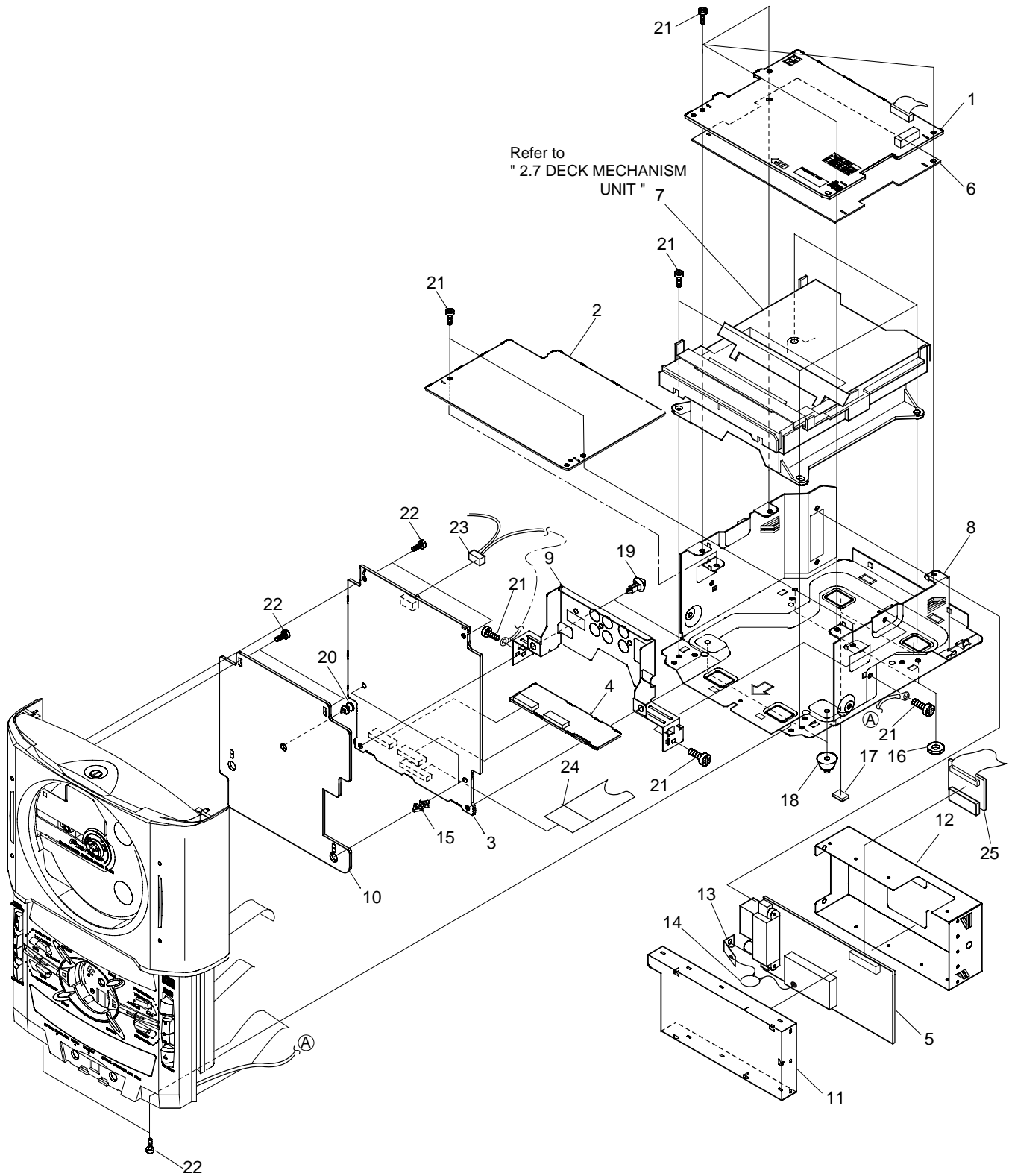
(2) CONTRAST TABLE

XC-IS21T/ZYXJ and ZVXJ are constructed the same except for the following:

Mark	No.	Symbol and Description	Part No.		Remarks
			ZYXJ type	ZVXJ type	
	13	Coution Label	PRW1233	PRW1018	
	14	Coution Label	VRW1094	Not used	

XC-IS21T

2.3 EXTERIOR (2/2)

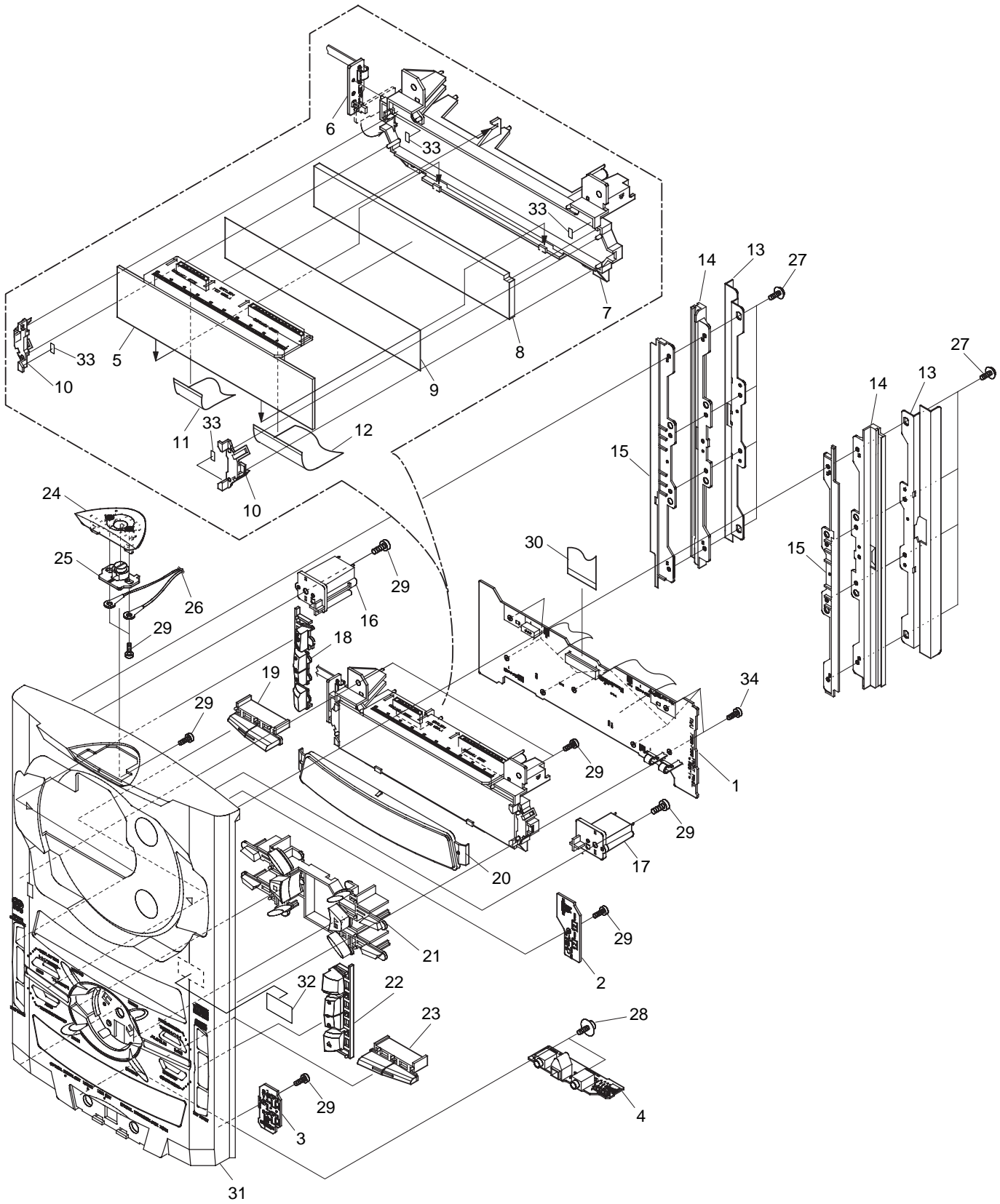


● EXTERIOR (2/2) PARTS LIST

Mark	No.	Description	Parts No.
	1	U- COM ASSY	AWU7325
	2	DECK ASSY	AWU7333
	3	AF ASSY	AWU7296
	4	R- TERMINAL ASSY	AWU7314
	5	FM/AM TUNER MODULE	AXQ7068
	6	Deck Shield	AEC7209
	7	DECK MECHANISM UNIT	AXA7075
NSP	8	Chassis M	ANA7087
	9	Rear Panel	ANC7735
NSP	10	Shield Plate	ANK7059
	11	Shield Case T	ANK7050
	12	Shield Case B	ANK7051
	13	Earth Plate	XNG3015
	14	Ceramic Capacitor	CKPUYB102K50
	15	PC Support	DEC1932
NSP	16	Spacer	AEB7092
	17	Rubber Sheet	AEB1111
	18	Leg Assy IS	AEC7202
	19	Locking Card Spacer	VEC1596
NSP	20	PCB Spacer (3 x 6)	AEC7156
	21	Screw	BBZ30P080FMC
	22	Screw	VPZ30P080FZK
	23	Connector Assy 3p	ADX7252
	24	23P F.F.C /30V	ADD7150
NSP	25	TX CONNECT ASSY	AWU7323

XC-IS21T

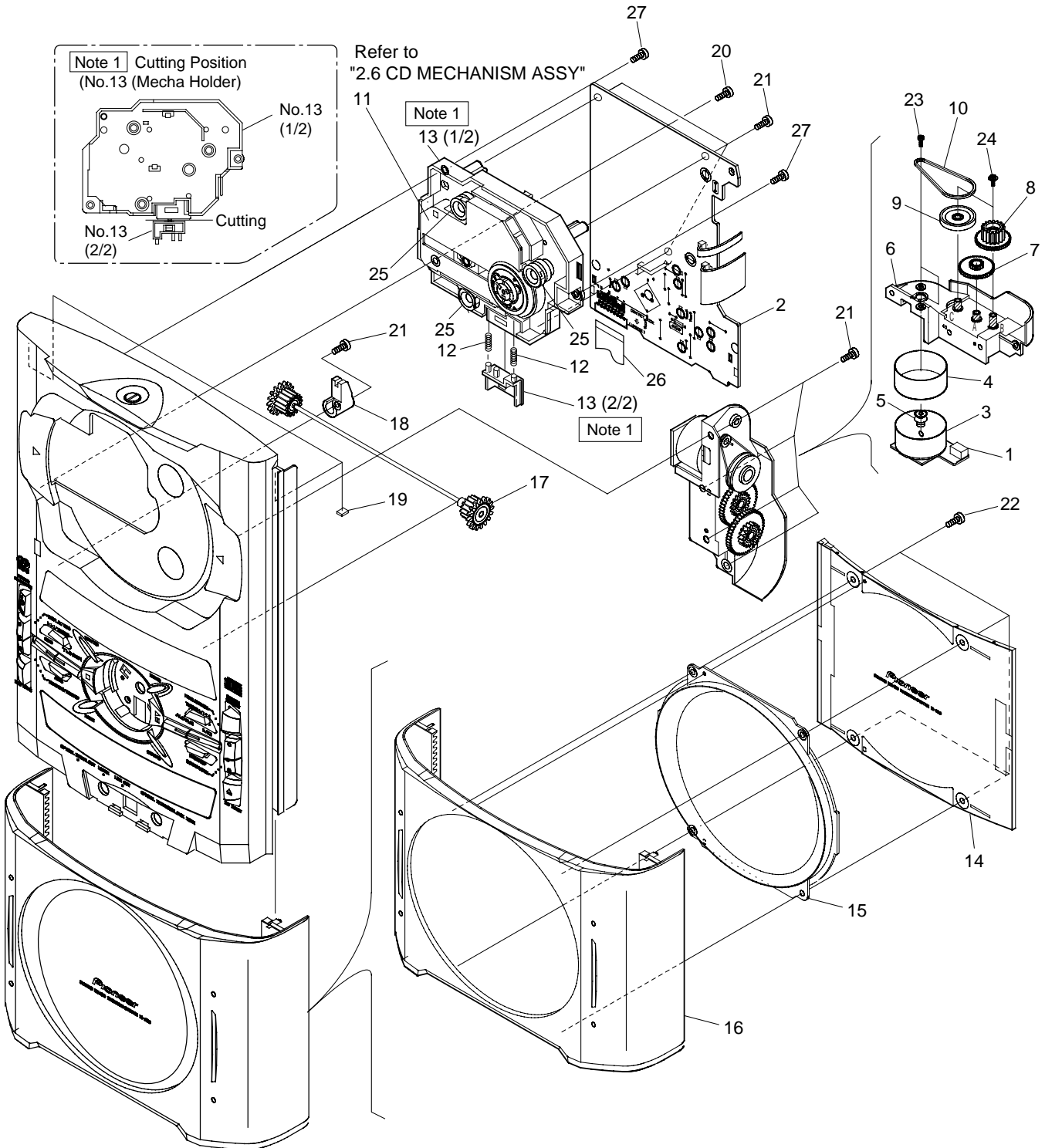
2.4 FRONT PANEL ASSY (1/2)



● FRONT PANEL ASSY (1/2) PARTS LIST

Mark	No.	Description	Parts No.
	1	FRONT PANEL ASSY	AWU7308
NSP	2	CD CLOSE SW ASSY	AWU7320
NSP	3	CO OPEN SW ASSY	AWU7319
	4	F- TERMINAL ASSY	AWU7310
NSP	5	LCD ASSY (TC)	AWU7354
NSP	6	LIGHT- L ASSY	AWU7321
	7	Lens Holder	AMR7247
	8	Lens M	AAK7615
	9	Diffusion Sheet	AAK7666
	10	Reflector	AMR7248
	11	15P F.F.C/ 30V	ADD7147
	12	29P F.F.C/ 30V	ADD7148
	13	Frame	ANG7235
	14	Rail	AMR7239
	15	Blind	AMR7261
	16	PCB Holder L	AMR7262
	17	PCB Holder R	AMR7263
	18	Plating Button Assy	AXG7077
	19	Fuction Button B	AAD7511
	20	Window	AAK7621
	21	Complex Button	AAD7509
	22	Plating Button	AAD7507
	23	Function Button A	AAD7510
	24	O/C Button	AAD7506
	25	Key O/C	AAD7526
	26	Connector 3p	ADX7252
	27	Screw	IPZ30P100FMC
	28	Screw	ABA1005
	29	Screw	VPZ30P080FZK
	30	17P F.F.C/ 30V	ADD7145
	31	Front Panel M	AMB7627
	32	PU Caution Label	ARW7059
	33	Spacer	AEC7216
	34	Screw	VPZ30P100FMC

2.5 FRONT PANEL ASSY (2/2)

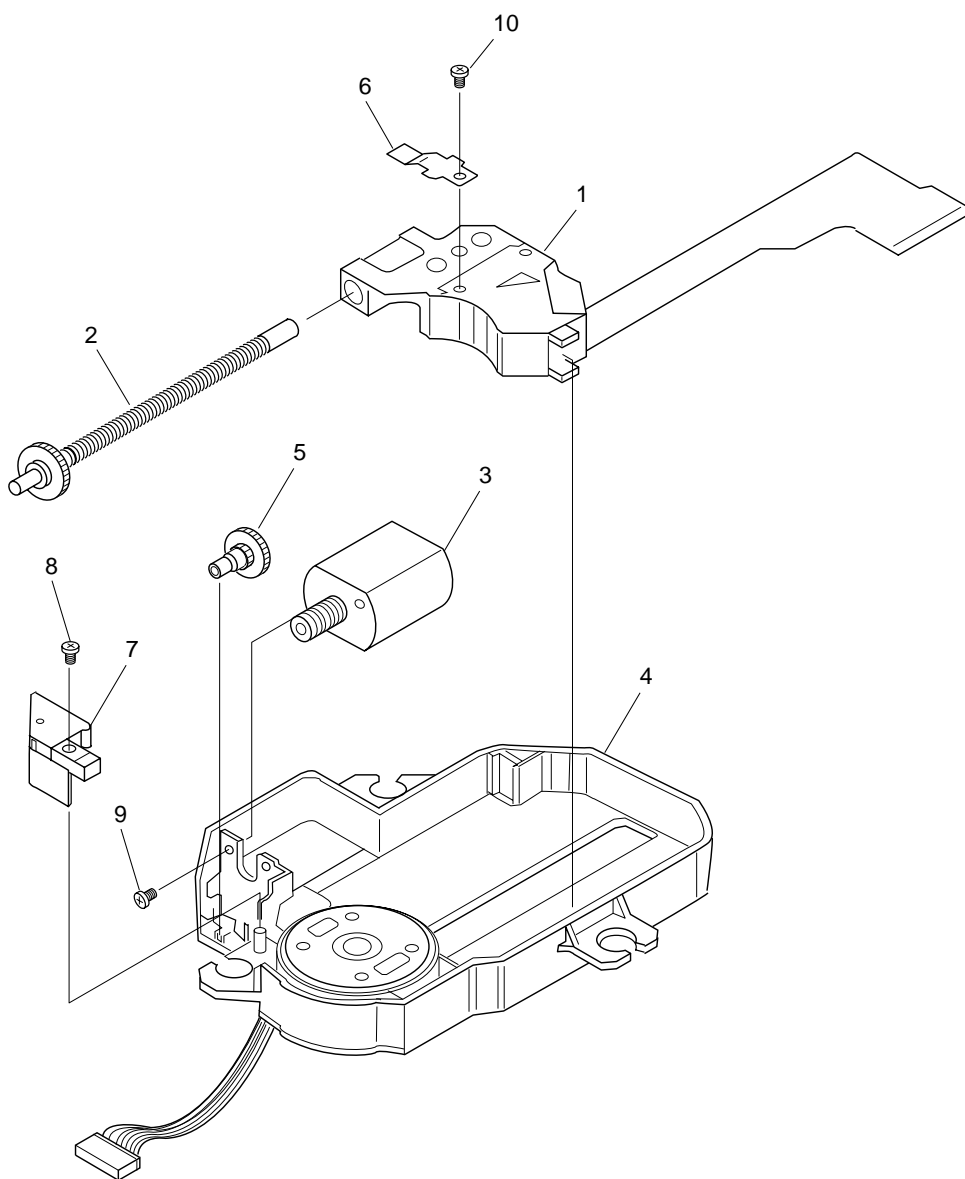


● FRONT PANEL ASSY (2/2) PARTS LIST

Mark	No.	Description	Parts No.
NSP	1	CD MOTOR ASSY	AWU7318
	2	CD ASSY	AWU7304
	3	Slider Motor	VXM1033
	4	Motor Shield	ANK7067
	5	Motor Pulley	PNW1634
	6	Gear Holder	AMR7240
	7	Gear A	ANW7063
	8	Gear B	AMR7260
	9	Gear Pulley A	ANW7066
	10	Belt	AEB7171
	11	CD MECHANISM ASSY	KSM-620AAA
	12	Float Spring	ABH7170
	13	Mechanism Holder	AMR7242
	14	CD Door Window	AAK7618
	15	CD Door Escutcheon	AAK7619
	16	CD Door	AAN7189
	17	Shaft Assy	AXG7078
	18	Shaft Holder	AMR7237
	19	Cussion Rubber	AEB7154
	20	Screw	BBZ30P080FMC
	21	Screw	VPZ30P080FZK
	22	Screw	ABA7054
	23	Screw	PMZ26P040FMC
	24	Screw	IPZ20P080FMC
	25	Float Rubber	AEB7129
	26	17P F.F.C/ 30V	ADD7146
	27	Screw	VPZ30P100FMC

XC-IS21T

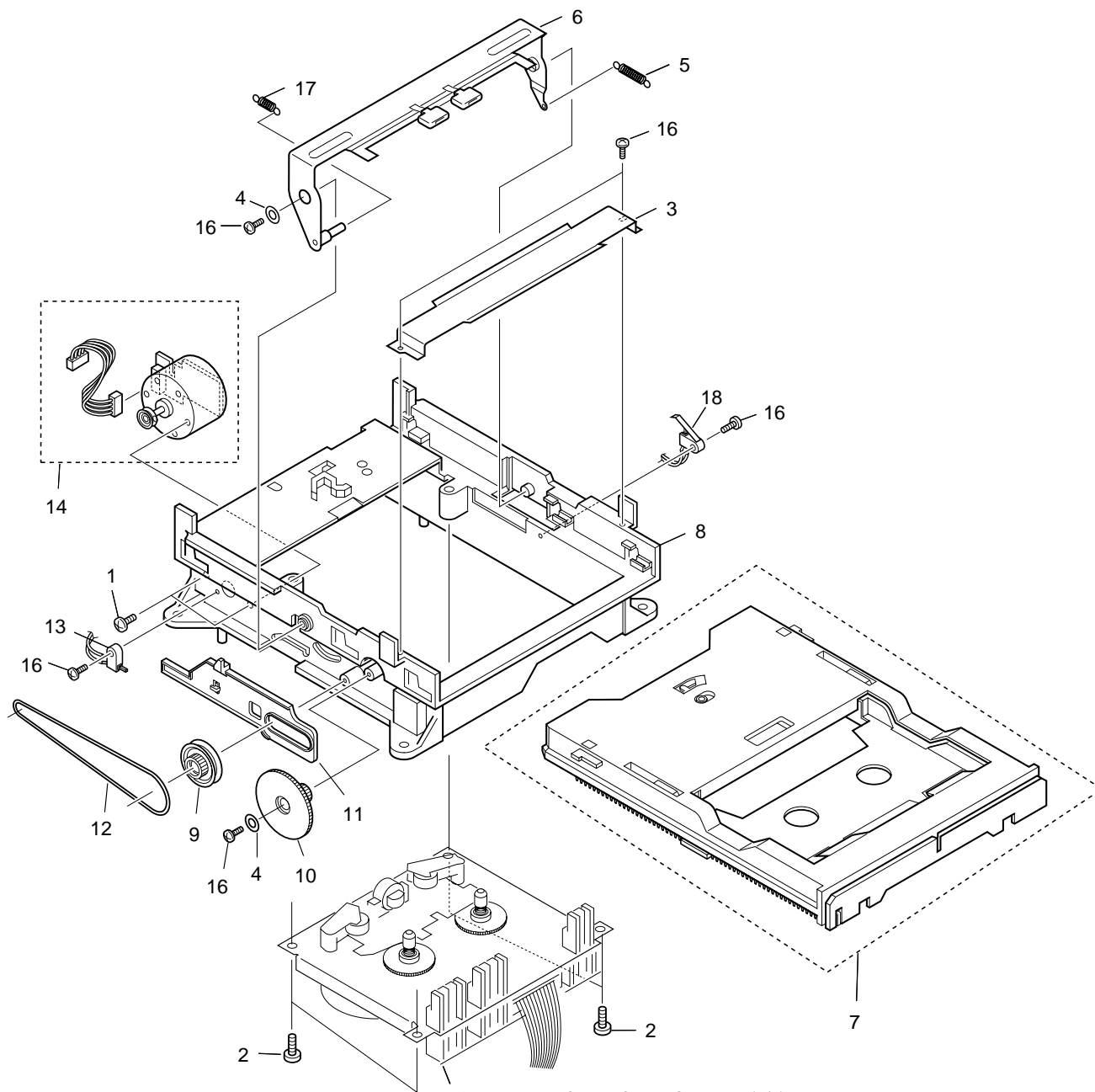
2.6 CD MECHANISM ASSY



● CD MECHANISM ASSY PARTS LIST

Mark	No.	Description	Parts No.
	1	KSS-62A(RP)	8-820-063-(03)
	2	Sled Screw Assy	X-2646-389-(1)
	3	Sled Motor Assy	A-4912-199-(A)
	4	MD Assy	X-2646-482-(1)
	5	Geer BN	2-627-761-(02)
	6	Rack Spring	2-646-912-(1)
	7	Holder	2-648-913-(1)
	8	Tapping Screw	2-646-352-01
	9	Precision Screw	2-627-668-01
	10	Tapping Screw	2-646-358-11

2.7 DECK MECHANISM UNIT (1/2)

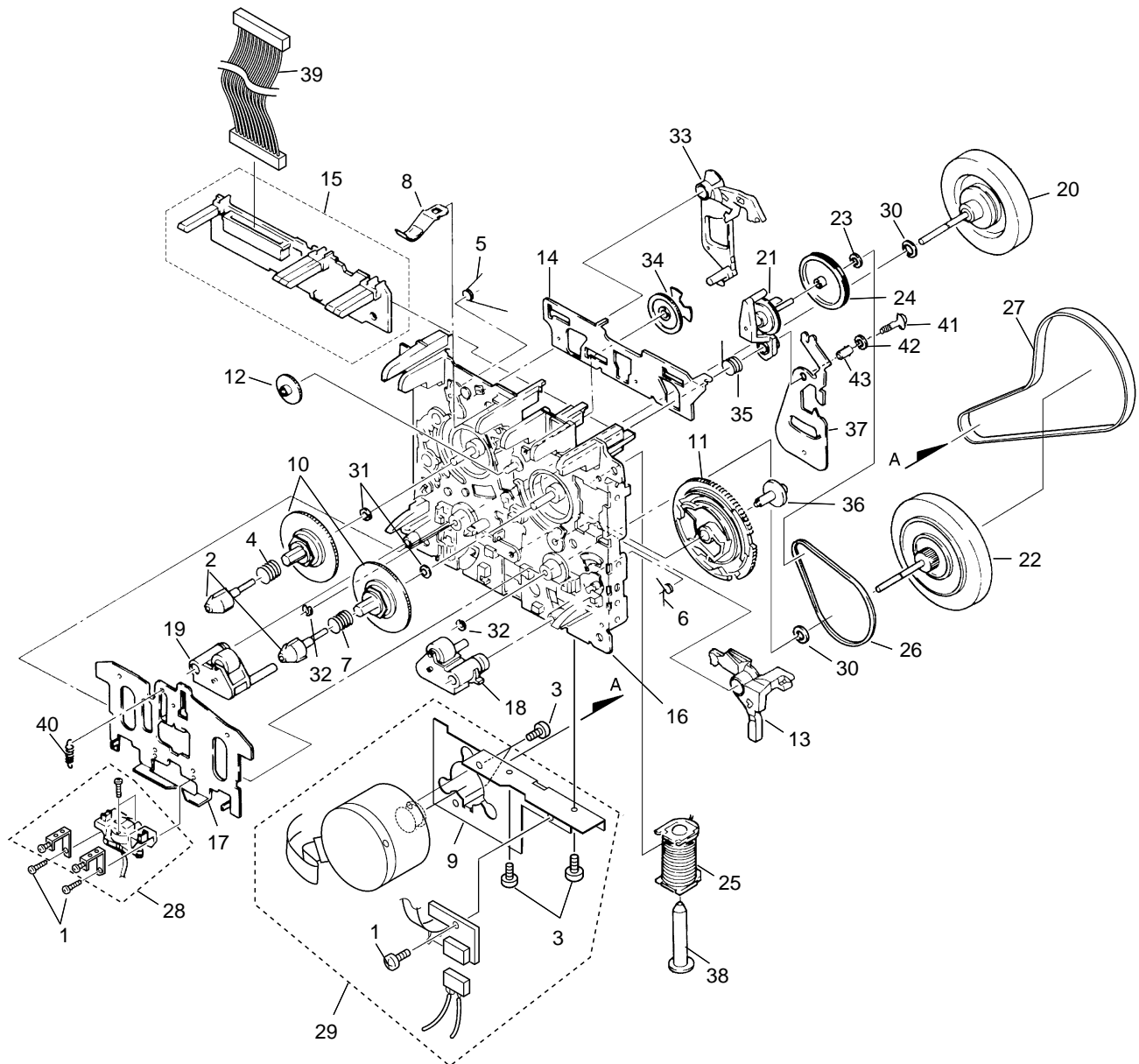


Refer to "2.8 DECK MECHANISM UNIT (2/2)".

● DECK MECHANISM UNIT (1/2) PARTS LIST

Mark	No.	Description	Parts No.	Mark	No.	Description	Parts No.
	1	Screw	FG114-14		11	Slider	FD57E-11
	2	Screw	UG12H-15		12	LDG Belt	FF19L-12
	3	Front BKT	FC64K-11		13	Switch	UE15S-14
	4	Washer	MJ112-22		14	MTR Reel BLK	F564-313
	5	SP Return	FK34N-11		15	
	6	Plate Hold BLK	F573-258		16	Screw	UG12H-28
	7	Holder CST BLK	F527-078		17	SP Clamper	FK34M-11
	8	LDG Base	FD56R-12		18	Switch	UE18P-21
	9	Pulley	FD56T-11				
	10	LDG Gear	FD56U-11				

2.8 DECK MECHANISM UNIT (2/2)



● DECK MECHANISM UNIT (2/2) PARTS

LIST

Mark	No.	Description	Parts No.
	1	Screw	KG194-36
	2	Reel Feather	FD57D-13
	3	Screw	UG11S-14
	4	SP Reel(L)	FK32U-12
	5	SP Brake	FK33B-13
	6	SP Arm Play	FK33P-11
	7	SP Reel(R)	FK32V-12
	8	Spring Cassette	FC65M-11
	9	BKT MTR	FC64M-12
	10	Reel Base	FD52W-12
	11	Cam Gear	FD52Y-23
	12	Play Gear (A)	FD53K-12
	13	Arm Play	FD53D-19
	14	Plate Slide	FC61L-19
	15	PCB Control BLK	F567-617
	16	Chassis base BLK	F612-231
	17	Head Base	FC61K-32
	18	Roller Pinch BLK R	F514-129
	19	Roller Pinch BLK L	F514-130
	20	Assy F/W	FR24S-21
	21	Clutch Assy BLK	F522-037
	22	Clutch Assy BLK	F522-048
	23	Washer	FJ111-13
	24	F/R Pulley	FD53F-15
	25	Solenoid BLK	F765-279
	26	F/R Belt	FF18W-12
	27	Belt Main	FF19H-11
	28	Plate HD BLK	F513-824
	29	MTR MAIN BLK	F525-321
	30	Washer	FJ111-30
	31	Washer	FJ111-35
	32	Washer	UJ16F-11
	33	Lever Brake	FD53P-17
	34	FF Gear(A)	FD53L-12
	35	Cam SP	FK32S-14
	36	Screw	UJ14A-12
	37	Lever F/R	FC62G-14
	38	Plunger	FL41S-21
	39	Mecha-Cable	WH65N-11
	40	Spring HB	FK32T- 31
	41	Screw	UG15V-13
	42	Washer	MJ112- 22
	43	Spacer	UJ15V- 13