



Internal Use Only

Website <http://biz.lgservice.com>

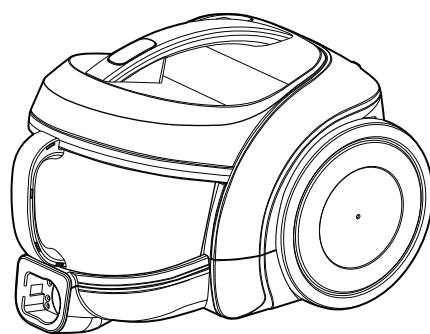
VACUUM CLEANER

SERVICE MANUAL

MODEL : VC5404PF

CAUTION

BEFORE SERVICING THE UNIT, READ THE
"SAFETY PRECAUTIONS" IN THIS MANUAL.



P/NO : MFL57903919

Dec, 2008
Printed in China

CONTENTS

SAFETY PRECAUTIONS.....3

CAUTIONS3

DESCRIPTION.....4

SPECIFICATIONS4

DISASSEMBLY5~6

TROUBLE SHOOTING GUIDE.....7~9

SCHEMATIC DIAGRAM.....10

CIRCUIT DIAGRAM.....11

EXPLODED VIEW12~16

SAFETY PRECAUTIONS

BEFORE OPERATING THIS VACUUM CLEANER, READ THIS SERVICE MANUAL THOROUGHLY, AND OBSERVE EACH POINT CAREFULLY.

1. Motor filter(Air Cleaner)

- 1) This filter is reusable.
- 2) Never use the vacuum cleaner without filter.
It may damage the motor.
- 3) If the suction power is decreased after cleaning dust tank, clean or wash the motor filter and air filter.
- 4) The motor filter and air filter clean or wash at least once 6 months.

NOTE : Reusing of the motor filter.

- Never wash the filter in a washing machine or in a dishwasher.
- Never use hot water for washing the filter.
- Reuse the filter after drying it completely in the shade for a day.
- Do not dry near fire or direct sunray.

2. Exhaust filter(HEPA filter)

- 1) This filter is reusable HEPA filter.
- 2) For clean air, filter must be assembled.
- 3) Dust off filter. (Do not wash filter with water.)
- 4) Clean the exhaust filter once 1 year.

NOTE : Reusing of the exhaust filter.

- Do not wash filter with water.
- Do not brush the filter. This will cause permanently damage allowing dust to by-pass the filter.

3. Avoid suction such materials as :

- 1) Liquid or wet dust :
Clogs the ventilation holes, reduces the suction power significantly and harms the motor.
- 2) Inflammable liquids such as benzene, alcohol or solvents.
- 3) Burning objects such as cigarette butts.
- 4) Bulky objects such as vinyl, paper etc.
- 5) Sharp objects such as needles, pins, metal, glass particles etc.

4. Attachments

- Nozzle : for cleaning wooden floor, the room floor and carpet.
- Crevice Tool : for cleaning any crevice, inside corners or window frames. However, do not use the crevice tool more than 20 minutes because it may cause harm to the motor.
- Dusting brush : for cleaning clothes curtains.

5. Close supervision is necessary when this vacuum cleaner is used by or near children. Children's carelessness may cause damage to the cleaner or injure persons.

6. Air exhausted from the vacuum cleaner is normally warm. But if extraordinarily hot air is exhausted, check if the telescopic tube, hose or clean filter is clogged or not.

7. Electric shock could occur if used outdoors or on wet surfaces.

CAUTIONS

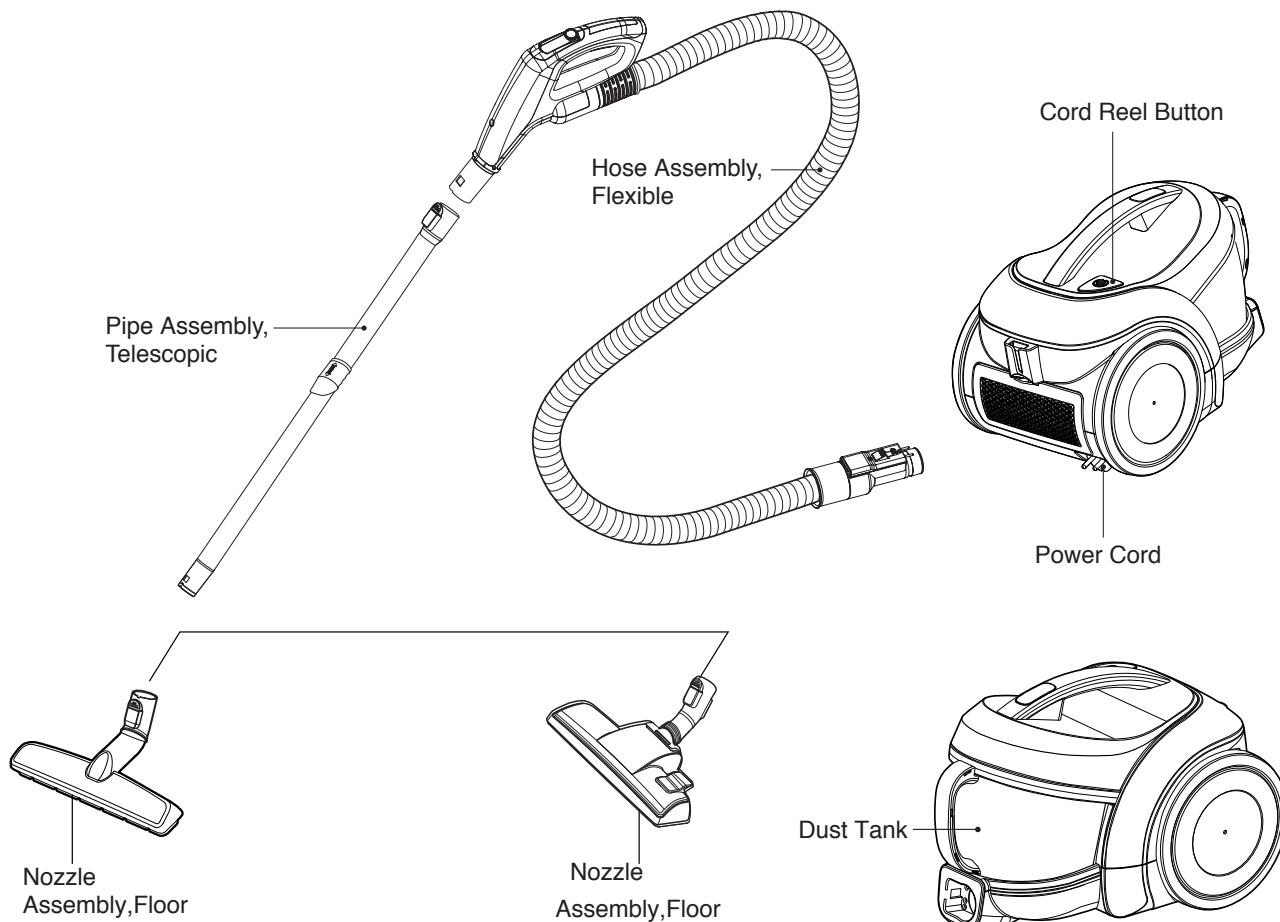
BEFORE ATTEMPTING TO SERVICE OR ADJUST ANY PART OF THE VACUUM CLEANER, DISCONNECT THE ELECTRICAL POWER SUPPLY CORD FROM THE WALL OUTLET.

1. Motor exchange

- 1) Separate the Body Cover and Body Base by unfastening the screws.
- 2) After disconnecting the lead wires, replace the old motor with a new one.

2. In case of exchanging other parts. refer to the exploded view.

DESCRIPTION



ATTACHMENTS



BRUSH ASSEMBLY, DUST



NOZZLE, CREVICE

SPECIFICATIONS

- **MODEL** : REFER TO THE COVER PAGE
- **POWER SOURCE** : ON RATING PLATE
- **POWER CONSUMPTION** : ON RATING PLATE
- **POWER CONTROL** :
 - **MAIN** : SLIDE KNOB CONTROL (F/HOSE)
- **CORD LENGTH** : 9m
- **HOSE LENGTH** : 1.8 m
- **NET WEIGHT** : 5.4 kg
- **PACKING WEIGHT** : 8.8 kg
- **NET DIMENSION** : 272 x 414 x 290 (D x W x H)
- This specifications are subject to change according to the buyer's request.

- **PACKING DIMENSION** : 330 x 565 x 335 (D x W x H)
- **ATTACHMENTS**

HOSE ASSEMBLY, FLEXIBLE.....	1EA
PIPE ASSEMBLY, TELESCOPIC	1EA
NOZZLE ASSEMBLY, FLOOR.....	1EA
BRUSH ASSEMBLY, DUST	1EA
NOZZLE, CREVICE.....	1EA
NOZZLE, UPHOLSTERY.....	1EA
(depending on model)	
BRUSH ASSEMBLY, DUST.....	1EA
(depending on model)	

Methods for Disassembly, Assembly and Repair of Main Parts

Need-to-know for disassembly

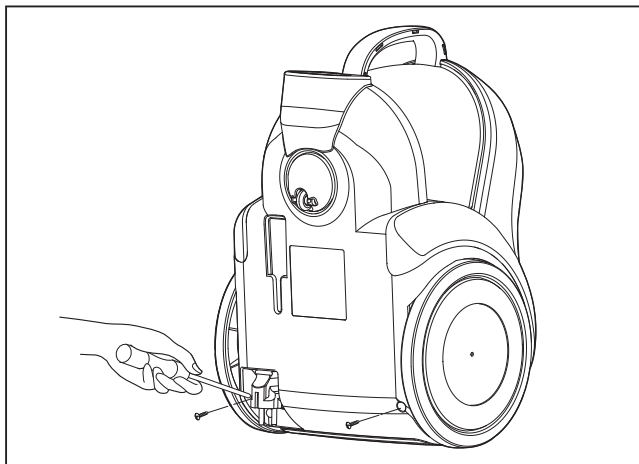
► Pull out the plug before disassembly and adjustment.

1. All the parts are almost connected by screws or assembled by insertion. Disassemble in order with reference to the disassembly diagram.
2. Do not proceed with further disassembly except the necessary part. Parts beyond the disassembly diagram are not to be disassembled.

Method for disassembly of main parts

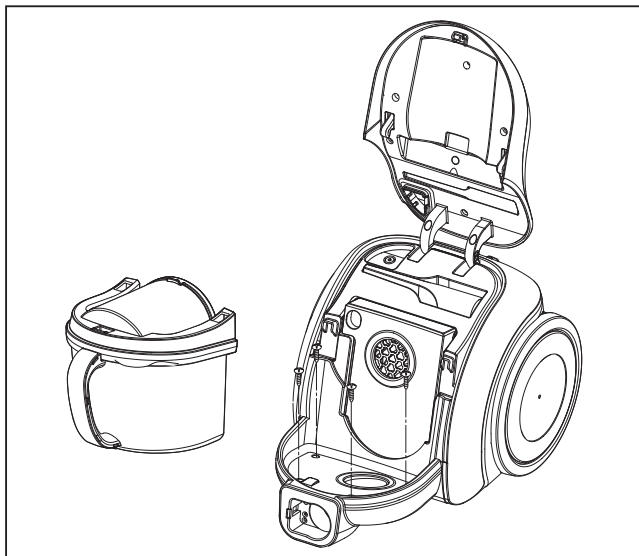
1. Method for disassembling the cover of the main unit

- 1) Loosen the screw in the base of the main unit (with TPL4*20:2 pieces, ⊕ type drive)

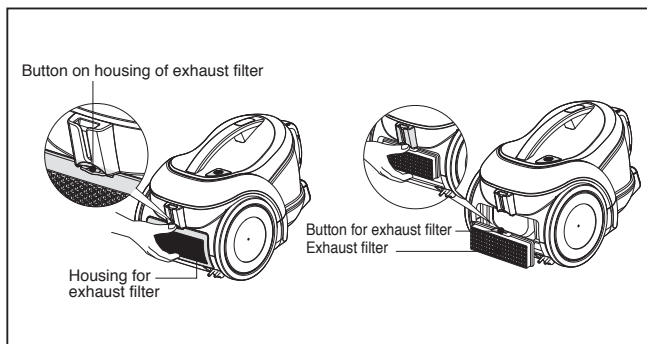


- 2) Press the button on the housing of the cleaner, open the cover of the main unit and take out the vacuum cleaning box and the filter for protection of the motor.

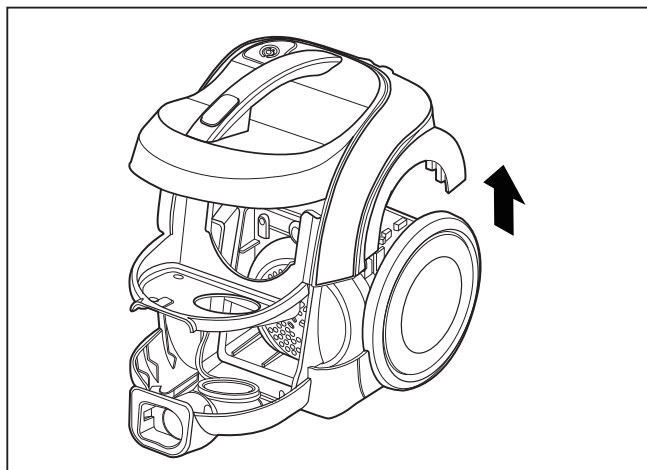
Loosen the screw (with TPL4*20:4 pieces, ⊕ type drive)



- 3) Remove the back (filter cover for exhaust)

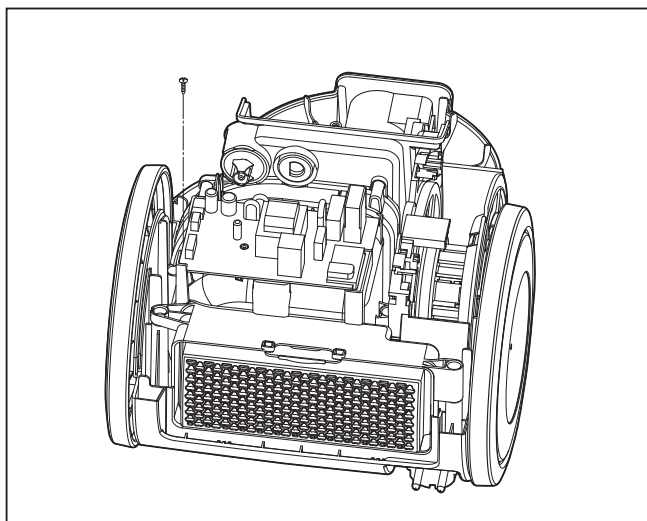


- 4) Lift the cover of the main unit.

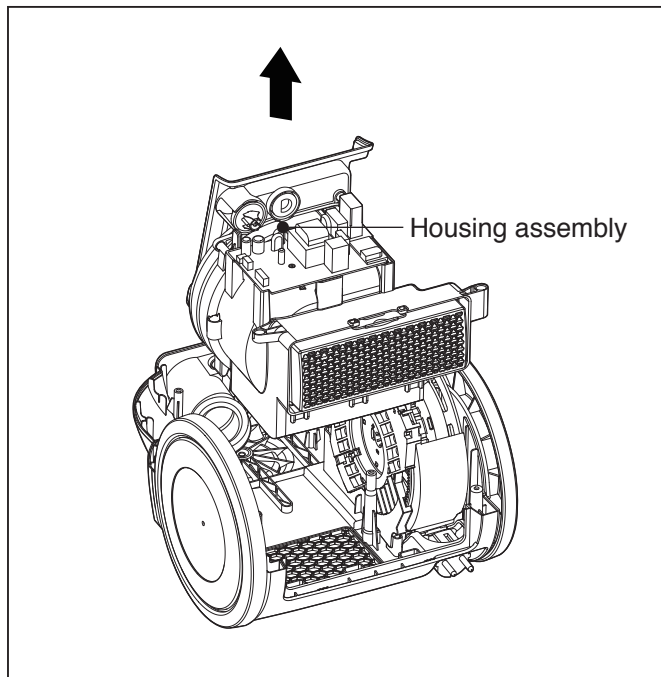


2. Method for disassembling code reel/motor housing assembly

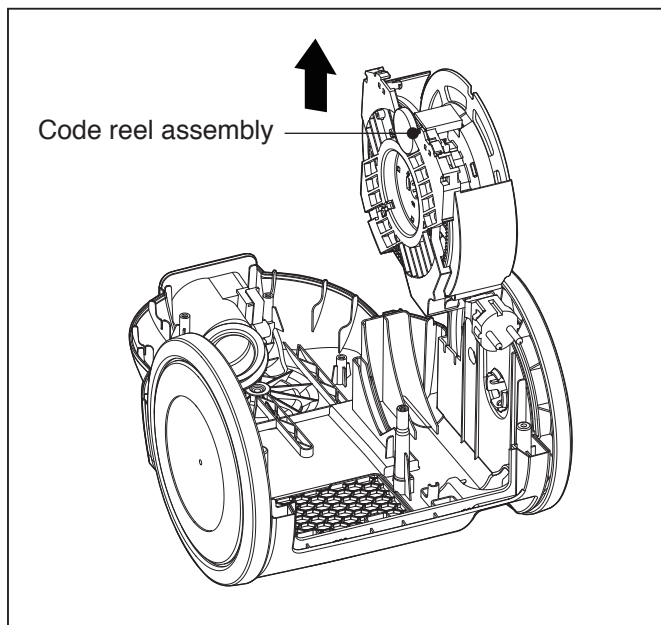
- 1) Loosen the screw joining the motor housing (with TPL4*20:2 pieces, ⊕ type drive)



2. Lift the motor housing assembly

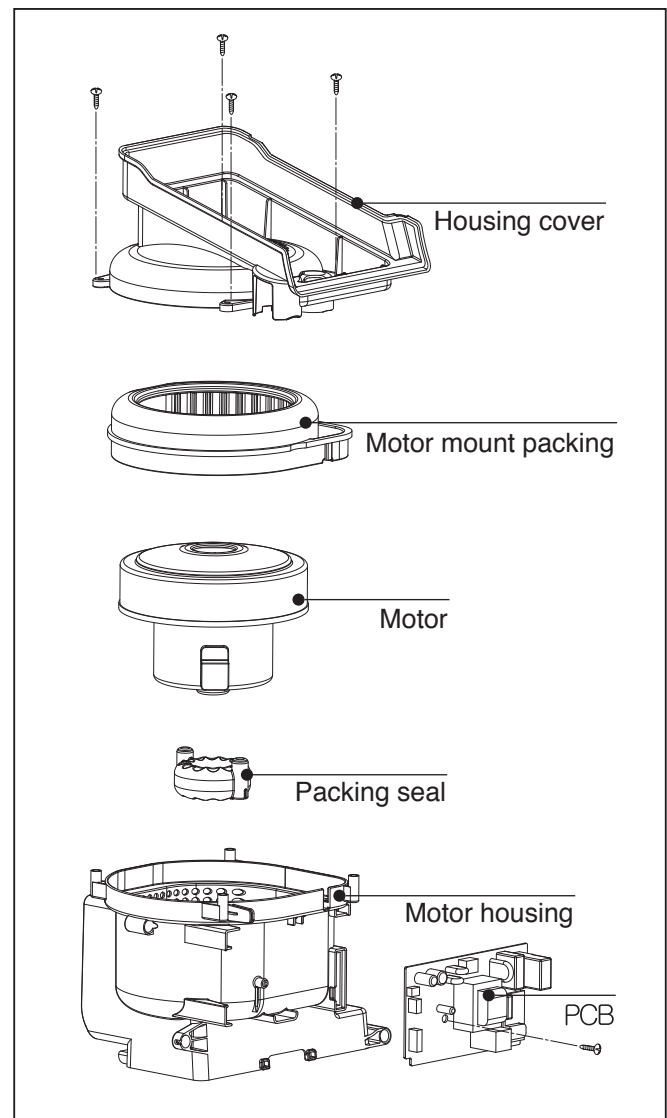


4. Lift the code reel assembly



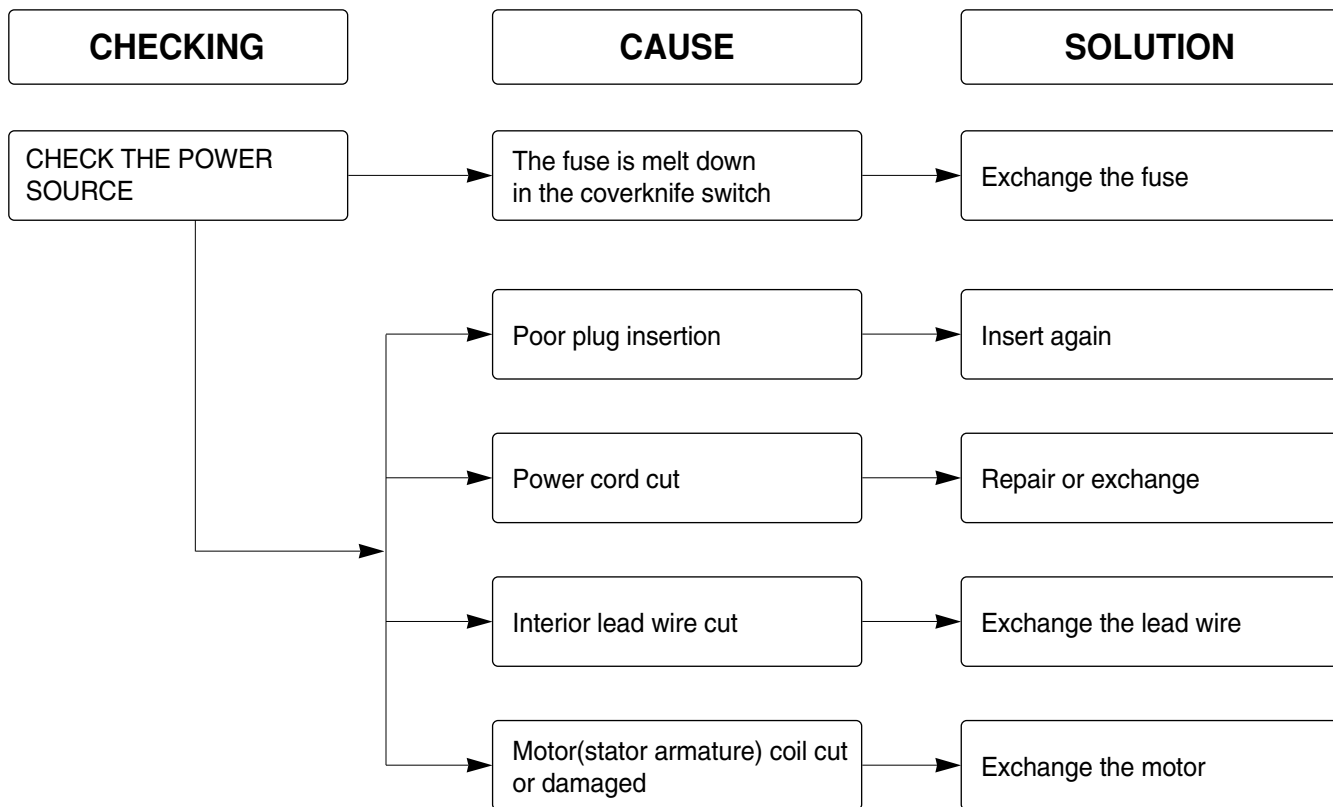
3. Replacement of motor

- ① Disassemble the motor assembly as shown in the figure (with TPL4*16:4 pieces, ⊕ type drive)
- ② For re-assembly after disassembling the motor cover, do so in the reverse sequence and insert the packing seal, motor and mount packing. During the assembly, make sure to prevent the packing seal and motor mount packing from dropping out (which may reduce the suction force).

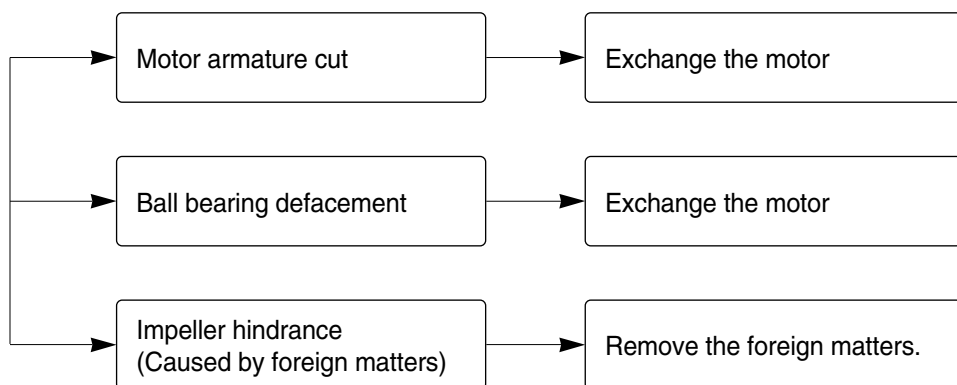


TROUBLE SHOOTING GUIDE

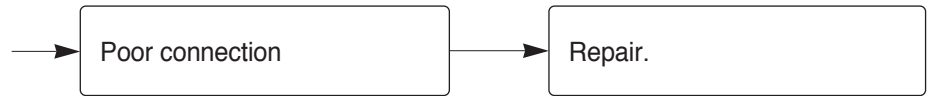
1. SWITCH ON BUT MOTOR DOES NOT TURN.



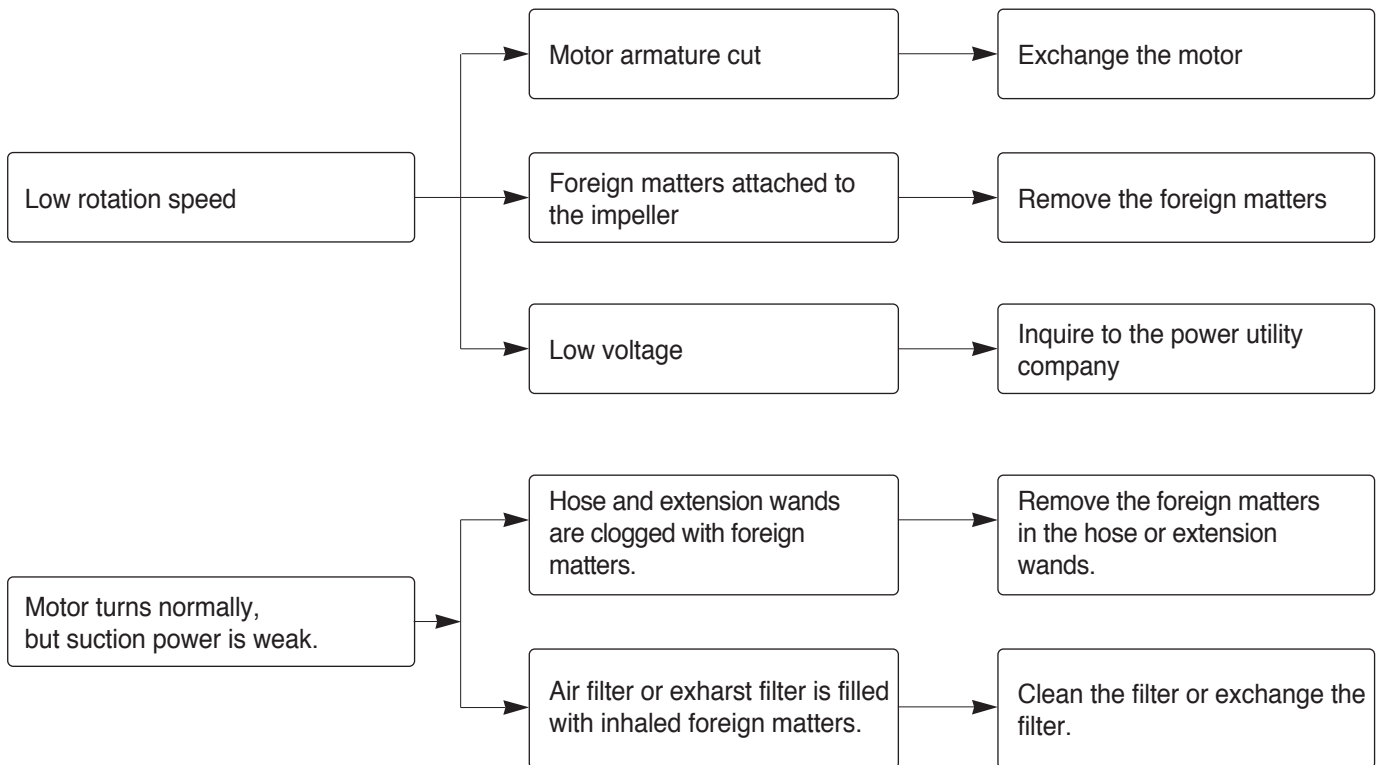
2. SWITCH ON, MOTOR DOES NOT TURN BUT BUZZES.



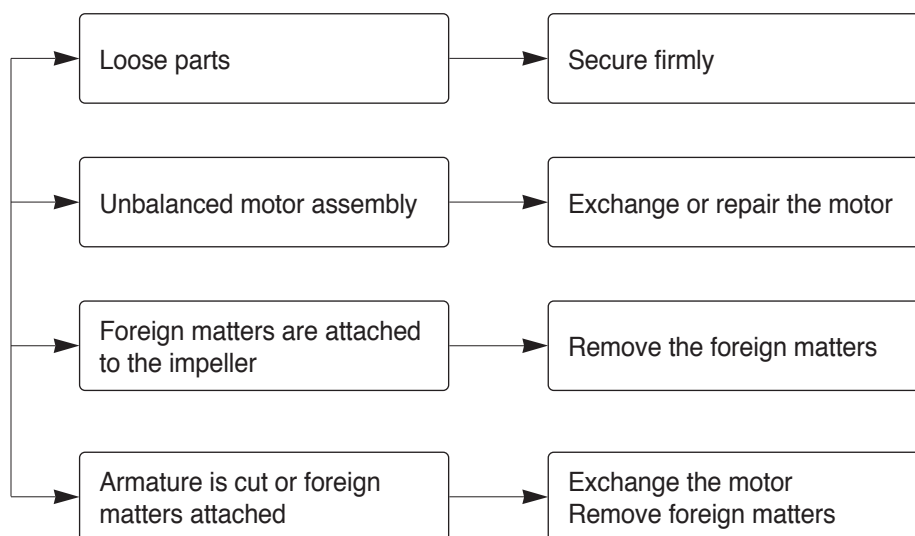
3. SWITCH OFF BUT MOTOR TURNS



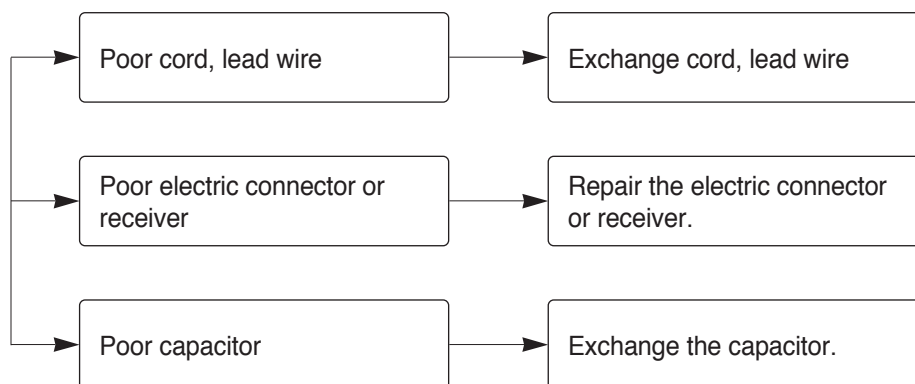
4. WEAK SUCTION POWER



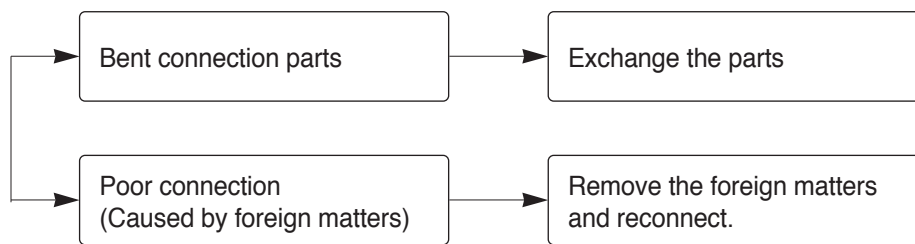
5. VIBRATION NOISES



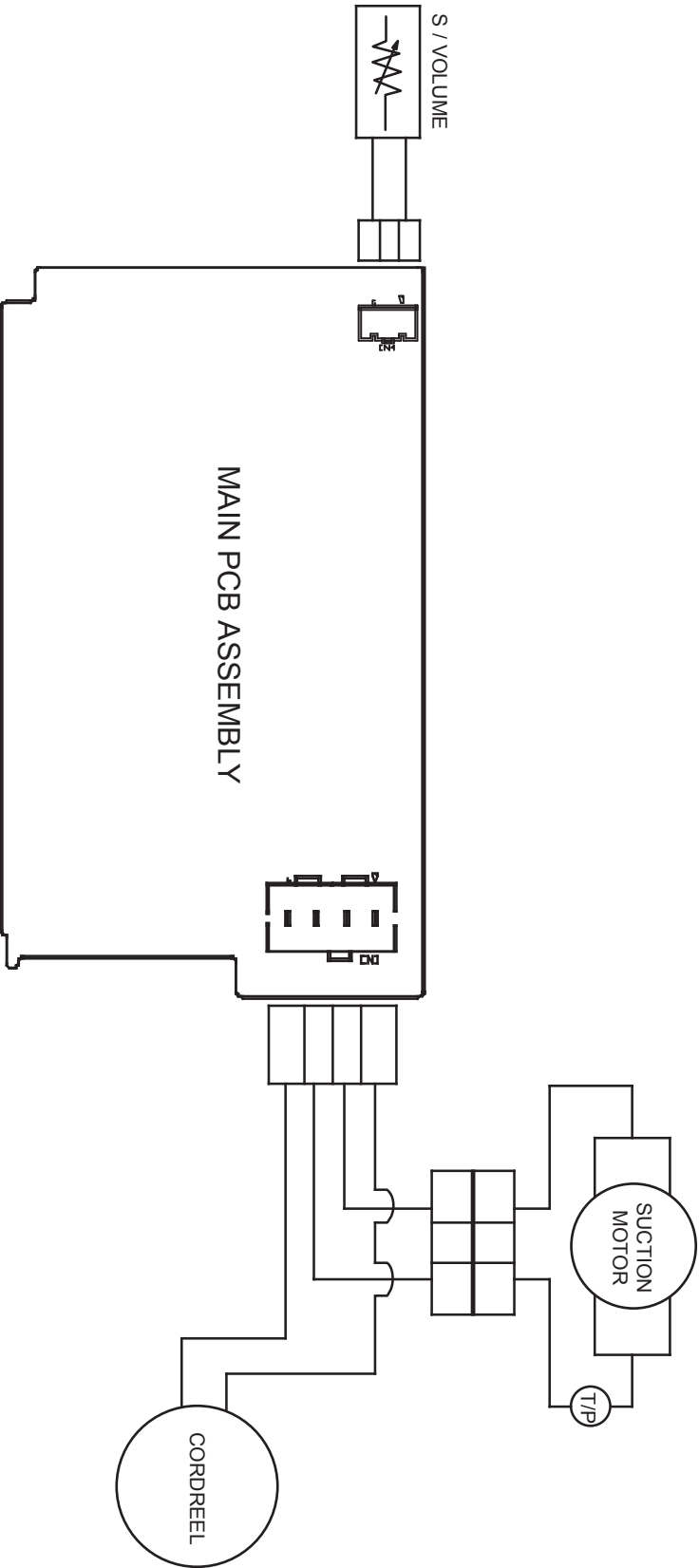
6. RADIO, TV RECEPTION DISTURBANCE



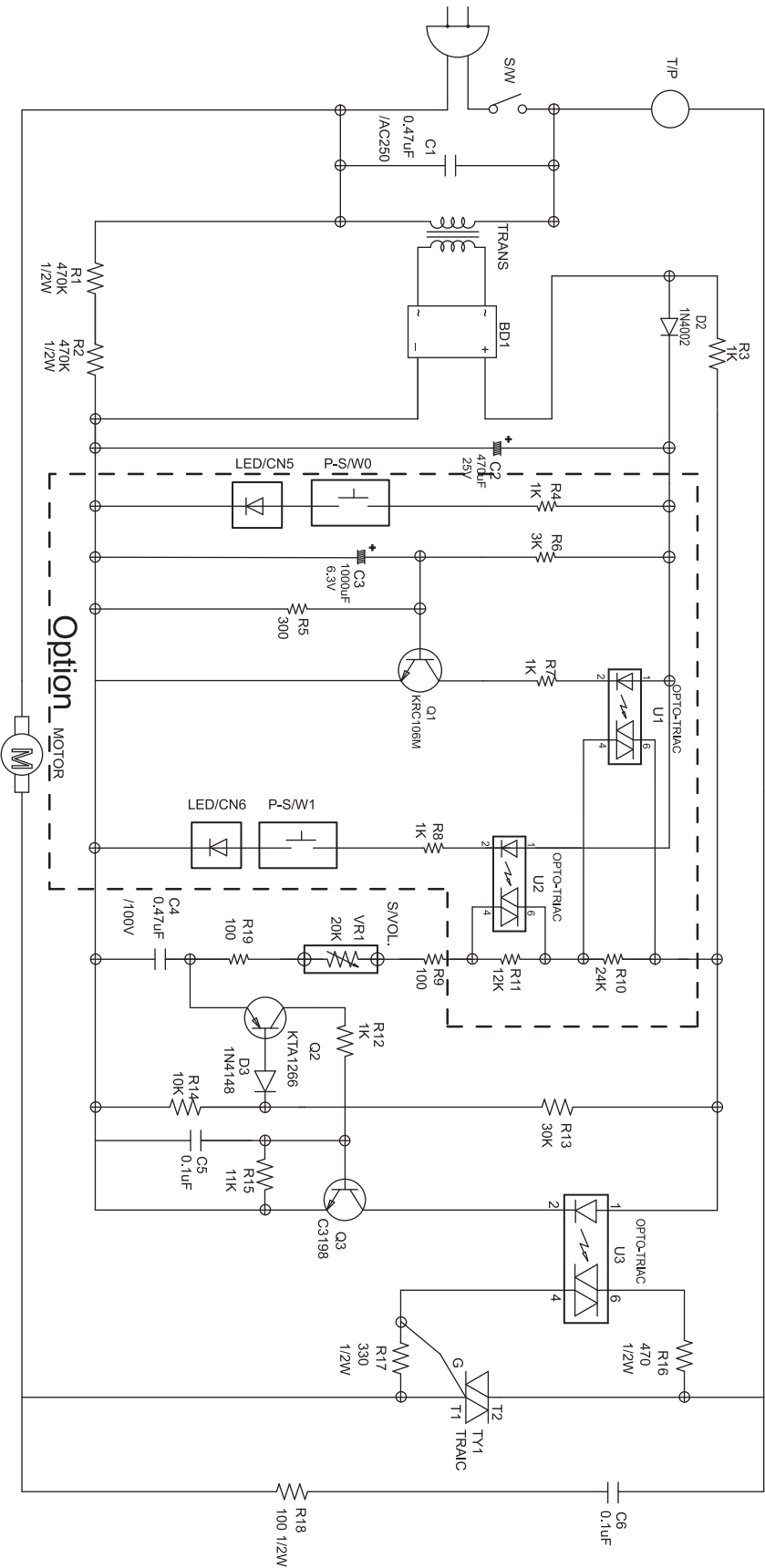
7. IMPROPER TUBE OF NOZZLE CONNECTION



SCHEMATIC DIAGRAM

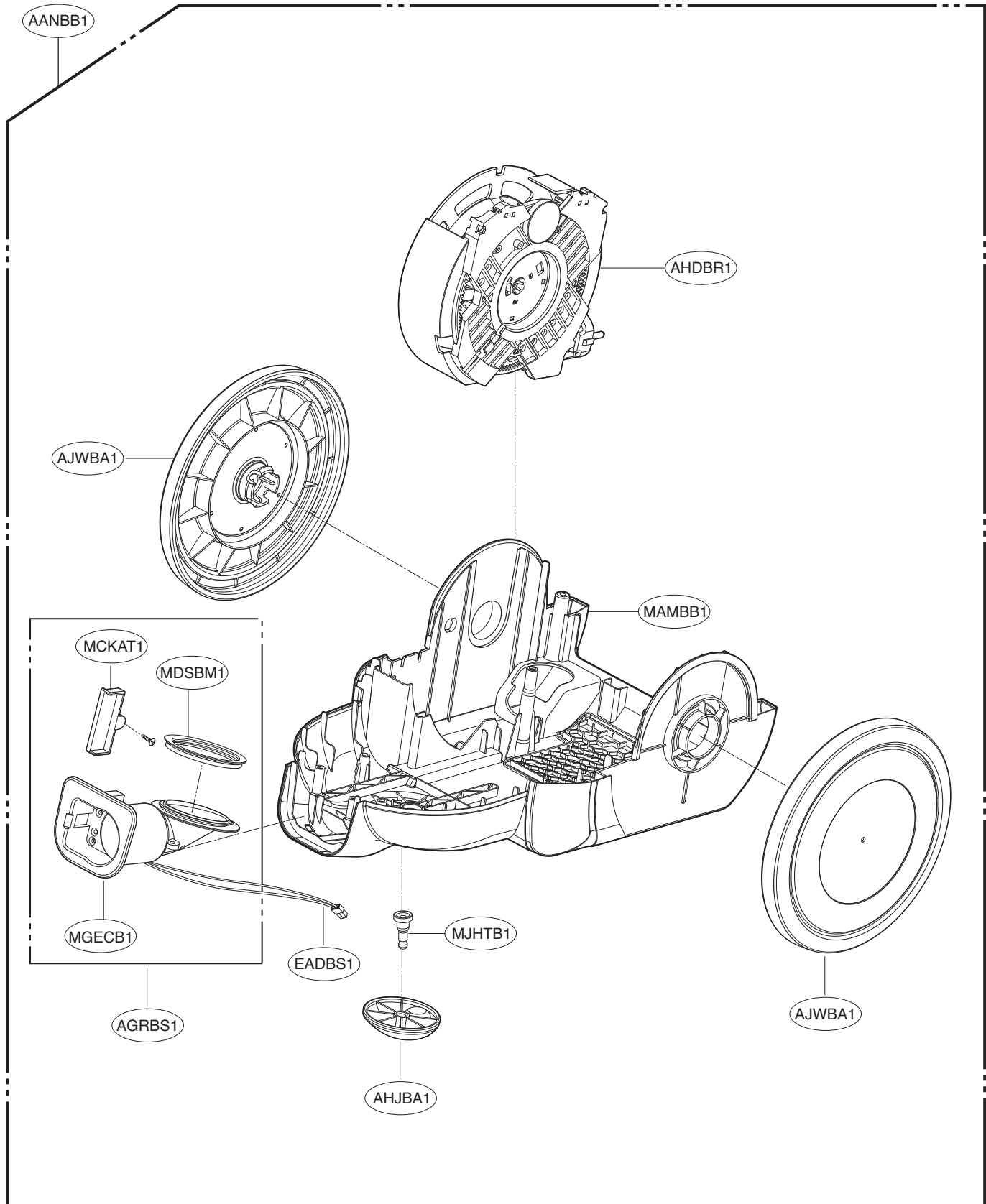


CIRCUIT DIAGRAM

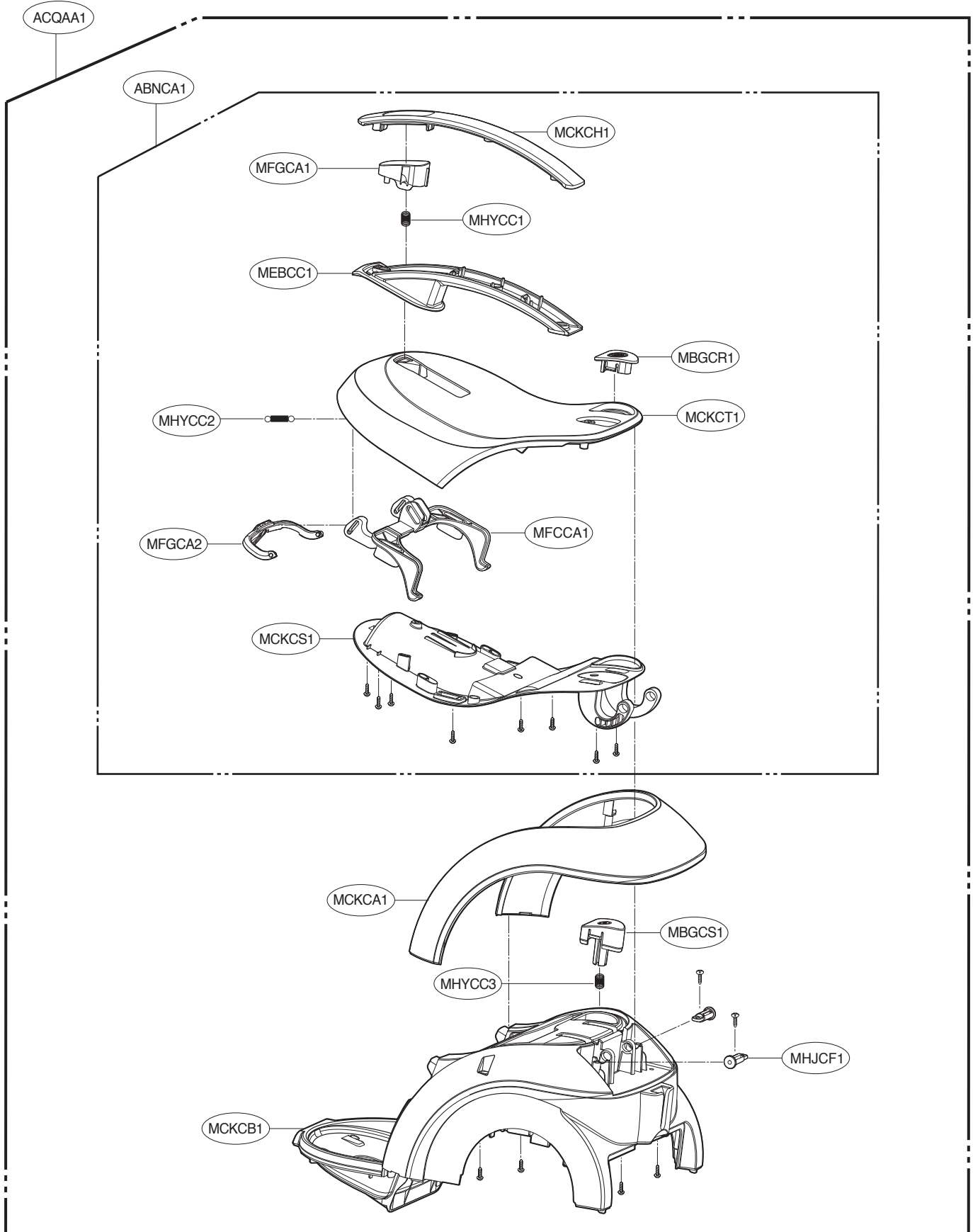


EXPLODED VIEW

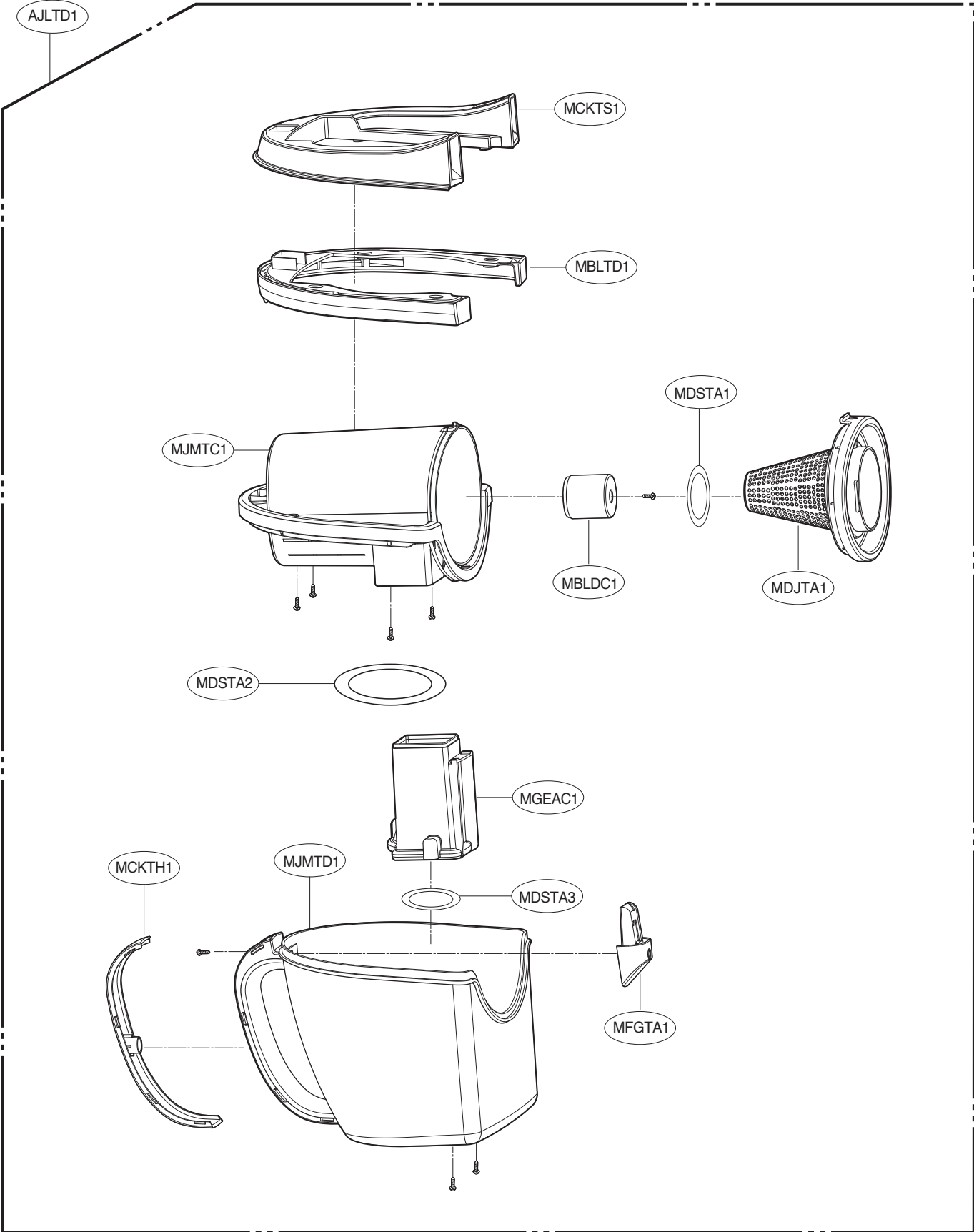
BASE ASSEMBLY, BODY



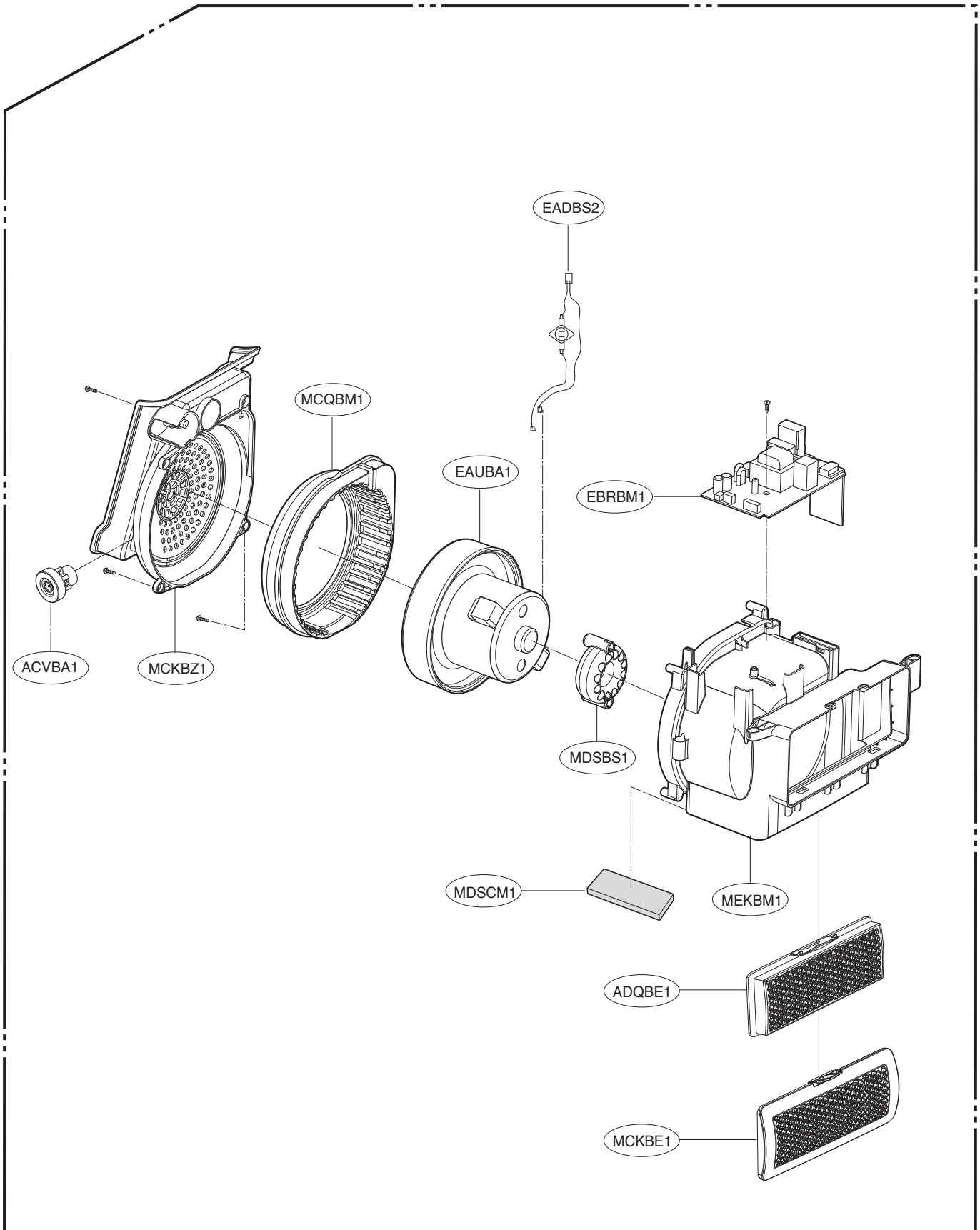
COVER ASSEMBLY, BODY



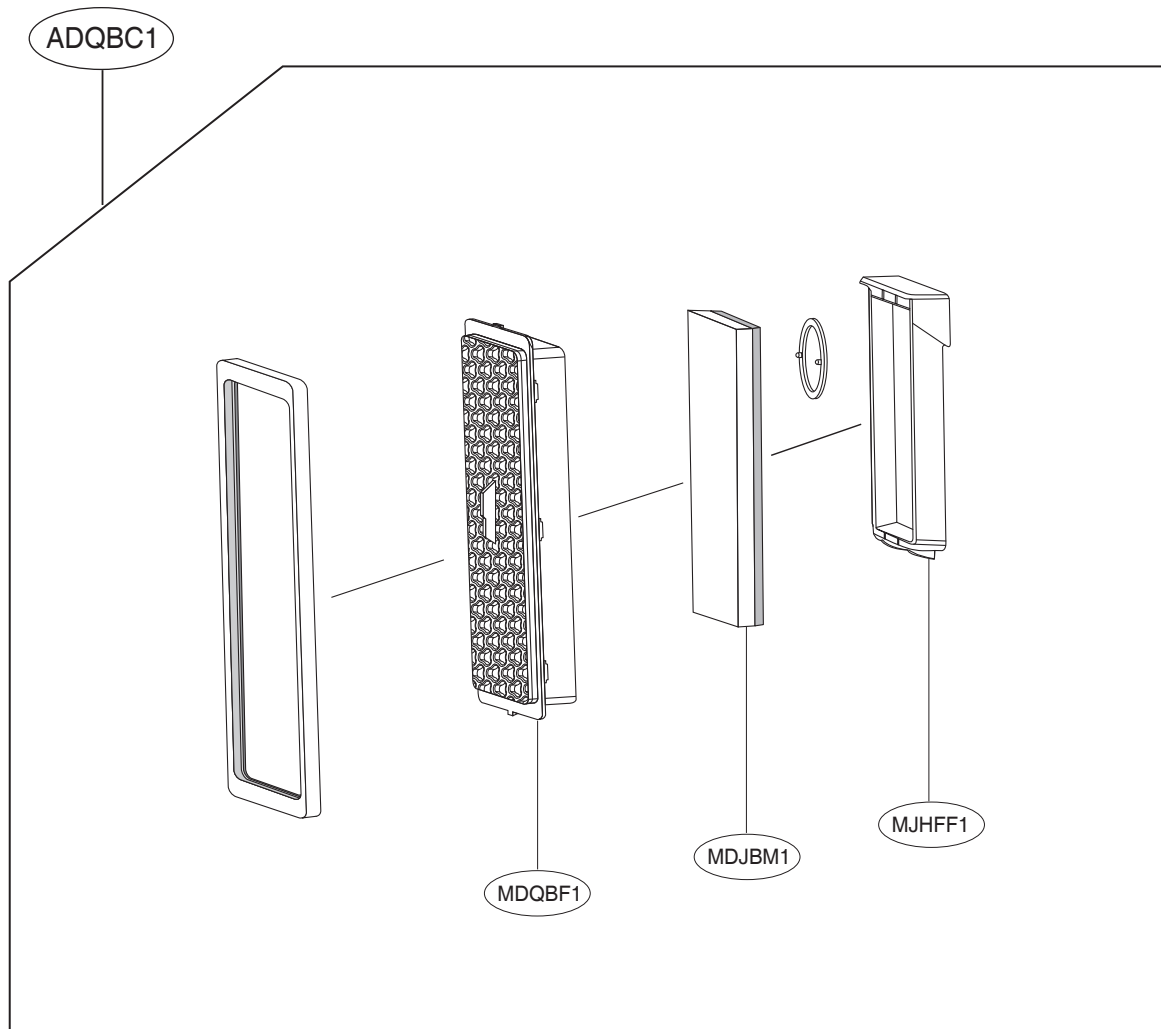
TANK ASSEMBLY, DUST



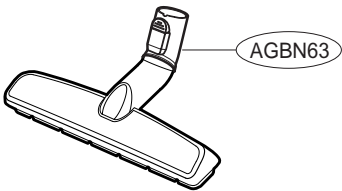
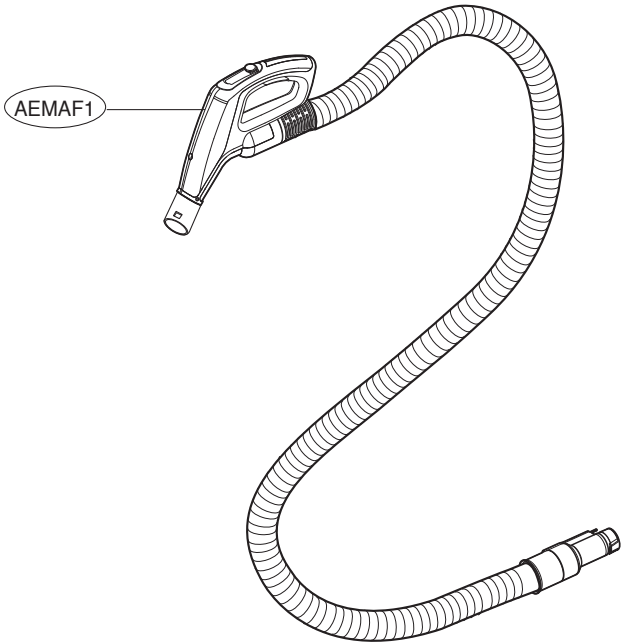
ACCESSORIES



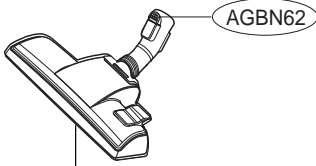
ACCESSORIES



ACCESSORIES



Nozzle
Assembly, Floor



Nozzle
Assembly, Floor

