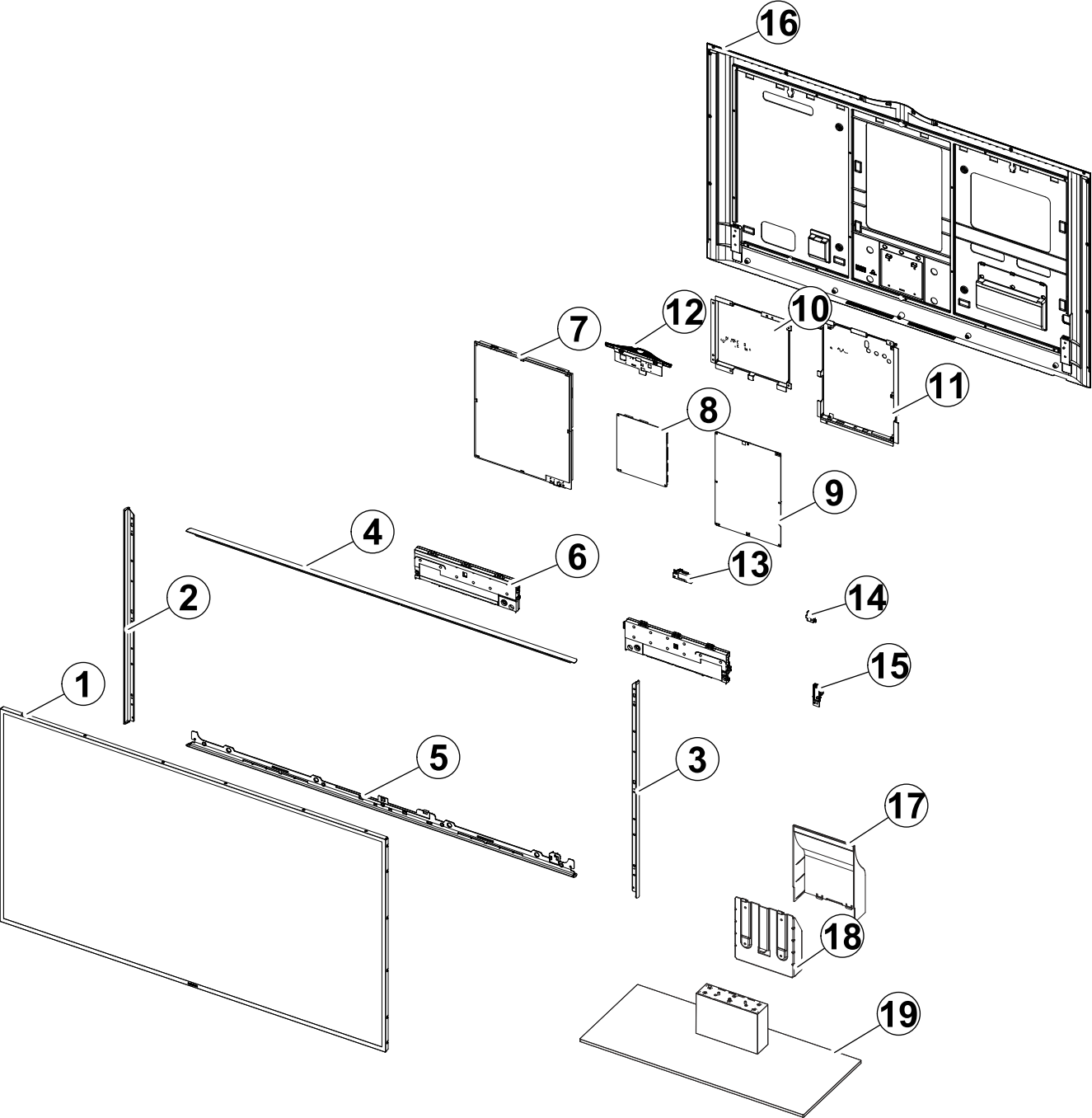


# 1. Exploded View & Part List

## Exploded View



## Parts List

No.	Lvl.	Loc.	Material Code	Description & Specification	SNA	Qty.
1	2	PANEL	BN95-01301A	PRODUCT LCD-AMLCD; LSF550FJ01-S,CY-KF550F	SA	1
2	2		BN61-09707A	SUPPORT-R; UF9000 55",AL,SIL*,Extruding,	SA	1
3	2		BN61-09706A	SUPPORT-L; UF9000 55",AL,SIL*,Extruding,	SA	1
4	2		BN63-11256A	COVER-FRAME, TOP; UF9000 55",AL,Extruding,	SA	1
5	2		BN96-29251B	ASSY COVER P-DECORATION; UF9000,55,PC+ABS	SA	1
6	2	SP01A	BN96-29039A	ASSY SPEAKER P; Mid-WF 6ohm, TW 6ohm, Mid-	SA	1
7	2	P001A	BN44-00675A	DC VSS-LED PD BD; L65D2L_DSM,L65D2L_DSM,A	SA	1
8	2	MF01A	BN94-06576A	ASSY PCB MISC-FRC; 55 UHD 120Hz	SA	1
9	2	M0014	BN94-07299J	ASSY PCB MAIN; UF9Y	SA	1
10	2		BN96-29686A	ASSY SHIELD P-PCB,FRC; US9000,55,SECC	SNA	1
11	2		BN96-29611D	ASSY SHIELD P-PCB,MAIN; UF9000,55/65,EURO	SNA	1
12	2	CAM	BN96-29221A	ASSY MISC P-AQUILA_UD6; AQUILA_UD6,TV Cam	SA	1
13	2	NW01	BN59-01161A	NETWORK; WIDT-30Q,Internal WiFi,USB,IEEE8	SA	1
14	2	BT	BN96-25376A	ASSY BOARD P-RF-MODULE; Bluetooth Module,	SA	1
15	2	JOG	BN96-29508A	ASSY BOARD P-JOG FUNCTION; S9,SUNGJI,FR-4	SA	1
16	2	R001A	BN96-29249C	ASSY COVER P-REAR; UF9000,55,EUROPE,PC+AB	SA	1
17	3		BN61-09753A	GUIDE-STAND, TOP; UF9000 55" 65",ABS+PC,V	SNA	1
18	3		BN61-09752A	BRACKET-NECK; UF9000 55"65",SECC,T2.0,Bla	SNA	1
19	2	SB04A	BN96-29257A	ASSY STAND P-BASE; UF9000,55,AL,SILVER,T6	SA	1

## 2. Electrical Parts List

Level	Loc.	Part Code	Description & Specification	Qty.	SA/SNA
			<b>UE55F9000SLXXC (UT08)</b>		
1		BN90-05012A	ASSY COVER MIDDLE;UF9000,55	1	SNA
.2		6001-002996	SCREW-MACHINE;FH,+,M3.0,L5.0,ZPC(BLK),SW	13	SA
.2		BN61-09706A	SUPPORT-L;UF9000 55",AL,SIL*,Extruding,	1	SA
.2		BN61-09707A	SUPPORT-R;UF9000 55",AL,SIL*,Extruding,	1	SA
.2		BN63-11256A	COVER-FRAME, TOP;UF9000 55",AL,Extruding,	1	SA
.2		BN96-29251B	ASSY COVER P-DECORATION;UF9000,55,PC+ABS	1	SA
..3		BN60-00162Q	SPACER-FOAM;FOAM,50000mm,DARK GRAY,0.35T	1	SNA
..3		BN63-08573G	COVER-SHEET;F9000 55/65,PE,T0.08,13mm,10	1	SNA
..3	FD01	BN63-11254A	COVER-DECORATION;UF9000 55",PC+G/F(15%),	1	SNA
..3		BN74-00052A	TAPE-PAPER;LB550,Crepe Paper,0.18mm, 10m	0	SNA
..3	FB01A	BN96-29541B	ASSY BOARD P-IR FUNCTION;F9000,SUNGJI,FR	1	SA
..3	BLOGO	BN96-29685A	ASSY BLU P-LOGO;UN55F9000,M13-F9000-AA,B	1	SA
1	R001A	BN90-05014C	ASSY COVER REAR;UF9000,55,Square	1	SNA
.2		6001-002755	SCREW-MACHINE;BH,+,M3,L6,ZPC(BLK),SWRCH1	17	SA
.2	R001A	BN96-29249C	ASSY COVER P-REAR;UF9000,55,EUROPE,PC+AB	1	SA
..3		6001-002756	SCREW-MACHINE;BH,+,M3,L6,ZPC(WHT),SWRCH1	14	SA
..3		AH63-02973A	GASKET;HW-E550,Conductive Fabric,10,6,20	20	SNA
..3		BN02-00040G	TAPE DOUBLE FACE-COVER NECK;F9000 55,acr	0	SNA
..3		BN02-00040H	TAPE DOUBLE FACE-COVER REAR;F9000 55/65,	5	SNA
..3		BN60-00162Y	SPACER-FOAM;FOAM,50000mm,DARK GRAY,0.35T	1	SNA
..3		BN61-09126B	MAGNET-COVER;UF9000 55/65,MAGNET*,T2,D8	6	SNA
..3		BN61-09708A	SUPPORT-REAR;UF9000 55",AL,1074mm,SILVER	1	SNA
..3		BN61-09708B	SUPPORT-REAR;UF9000 55",AL,998mm,SIL*,Ex	1	SNA
..3		BN61-09708C	SUPPORT-REAR;UF9000 55",AL,504mm,SIL*,Ex	1	SNA
..3		BN61-09708D	SUPPORT-REAR;UF9000 55",AL,565mm,SIL*,Ex	2	SNA
..3		BN61-09708E	SUPPORT-REAR;UF9000 55",AL,434mm,SIL*,Ex	1	SNA
..3	CCM1	BN63-02183G	COVER-SHEET;RhcM,PE Vinyl,T0.05,1100mm,2	1	SNA
..3		BN63-05199W	COVER-SHEET;PD490,PE,T0.08,W70mm,200M,CL	1	SNA
..3		BN63-07229T	COVER-SHEET;Y12 F-LED,SILICONE,T0.052,W	0	SNA
..3		BN63-10945B	COVER-SHEET;Y13 SF-LED,PO-SHEET,T0.068,W	1	SNA
..3	R001	BN63-11248B	COVER-REAR;UF9000 55",PC+ABS+G/F20%,BLK,	1	SNA
..3		BN63-11250B	COVER-REAR,MASK;UF9000 55",AL, VCM,T0.6,	1	SNA
..3		BN63-11381A	COVER-NECK;UF9000 55",ABS+PC,BLK	2	SNA
..3		BN63-11441A	GASKET;UN55F9000,Conductive Fabric,50.	2	SNA
..3		BN68-05423B	LABEL-TERMINAL,BOT;UF9000,PET,T0.125,EO	1	SNA
..3		BN72-00357A	SPONGE-EMI;42A4H,SHIELD FOAM,T8.0,W20.0,	10	SNA
.2	FC05A	BN96-29253A	ASSY COVER P-JACK;UF9000,55,ABS+PC,BLK	1	SA

Exploded Views and Parts List

Level	Loc.	Part Code	Description & Specification	Qty.	SA/SNA
...3		BN61-08900A	BRACKET-MAGNET, JACK;UF 8000 55",STAINLE	3	SNA
...3	CCM1	BN63-05199K	COVER-SHEET;AMBER,PE,T0.08,W120mm,200M,C	0	SNA
...3	FC05	BN63-11249A	COVER-JACK;UF9000 55",ABS+PC,V0,BK0008	1	SNA
1	S001A	BN90-05016A	ASSY STAND;UF9000,55	1	SNA
.2	SCREW	6003-001807	SCREW-TAPTYPE;BH,S,M4,L10,ZPC(BLK),SWRCH	6	SA
.2	SG01A	BN96-26645B	ASSY GUIDE P-STAND;F9000,55/65,PC+ABS,V0	1	SA
...3		BN61-05704A	BOSS-TAPE;UB8000,T1.1,W8,Dark Gray,3M #4	0	SNA
...3		BN61-09752A	BRACKET-NECK;UF9000 55"65",SECC,T2.0,Bla	1	SNA
...3		BN61-09753A	GUIDE-STAND, TOP;UF9000 55" 65",ABS+PC,V	1	SNA
...4	AS108	AK63-00946S	SHEET-PROTECTION;F9000 55/65inch,PET,0.0	0	SNA
...4		BN63-08573H	COVER-SHEET;F9000 55/65,PE,T0.08,250mm,1	0	SNA
...3		BN61-09775A	BRACKET-MAGNET,STAND;UF9000,SECC,T0.4,PC	1	SNA
...3		BN69-08751B	WRAP VINYL-SHRINK;STAND,PLASTIC OTHERS,P	0	SNA
...3		BN96-18013Q	ASSY ACCESSORY-SCREW;6003-001807,4EA,ZPC	1	SNA
...4	SCREW	6003-001807	SCREW-TAPTYPE;BH,S,M4,L10,ZPC(BLK),SWRCH	4	SA
...4		BN69-08203G	PACKING-BAG-SCREW;LDPE,0.05,70,90,TRP,Vi	1	SNA
...3		BN96-29960A	ASSY ACCESSORY-SCREW;UF9000,M4XL16 5EA	1	SNA
...4		6001-000706	SCREW-MACHINE;PH,+,-,M4,L16,ZPC(WHT),SWR	5	SNA
...4		BN69-04419X	PACKING-BAG PE;UF9000,LDPE,70,90,PH 4X16	1	SNA
.2	SB04A	BN96-29257A	ASSY STAND P-BASE;UF9000,55,AL,SILVER,T6	1	SA
...3	SB04	BN61-09743A	STAND-BASE;UF9000 55",AL,T6.0,SIL*,55"	1	SNA
...3		BN67-00459A	RUBBER-FOOT;STAND,SILICON,20*20,T2,GRAY,	5	SNA
.2		BN96-29785A	ASSY GUIDE P-STAND,BOT;UF5000,40,HOTEL,P	1	SA
...3		6001-000346	SCREW-MACHINE;FH,+,-,M3,L4,ZPC(WHT),SWRCH1	2	SNA
...3		BN61-09754A	GUIDE-STAND, BOT;UF9000 55" 65",ABS+PC,P	1	SNA
...3		BN61-09918A	STAND-NECK;UF9000 55",AL,SIL*,Extruding	1	SNA
...3		BN63-11562A	SHEET-COVER;UF9000,PET+SILICON,0.052,W 8	0	SNA
1		BN90-05051A	ASSY W/I;UF9000,55	1	SNA
.2		BN81-08159Z	PART SET-ELEC W/I;UF4* ~ UF8* ELEC	1	SNA
.2		BN81-08367U	PART SET-MECH W/I;UF9Y,U55FA*	1	SNA
1		BN91-11295M	ASSY SHIELD;UF9Y	1	SNA
.2	SCREW	6003-001086	SCREW-TAPTYPE;BH,+,-,B,M3,L12,ZPC(BLK),S	6	SA
.2	EC13	BN39-01475V	LEAD CONNECTOR;UN55F6100,Flat Connector,	1	SA
.2	EC13	BN39-01773M	LEAD CONNECTOR;F9000,Lead connector,UL 2	1	SA
.2	EC13	BN39-01807B	LEAD CONNECTOR;F9000,Lead connector,UL 2	1	SA
.2	EC13	BN39-01808B	LEAD CONNECTOR;F9000,Lead connector,UL 2	1	SA
.2	EC03	BN39-01815B	CBF SIGNAL;85S9,26P,coaxial,3000,UL,NTR	1	SA
.2	EC13	BN39-01822F	LEAD CONNECTOR;UN55S9,Lead Connector,UL2	1	SA
.2	EC13	BN39-01856A	LEAD CONNECTOR;UN55S9,Lead Connector,UL2	1	SA
.2	NW01	BN59-01161A	NETWORK;WIDT-30Q,Internal WiFi,USB,IEEE8	1	SA

Level	Loc.	Part Code	Description & Specification	Qty.	SA/SNA
.2		BN61-08936A	BRACKET-WALL, BOTTOM;UF8000 55",SECC,T2.	4	SNA
.2		BN61-09834A	BRACKET-GROUND;UF9000 55",SECC,T0.8	2	SNA
.2		BN62-00422A	PAD GAP;UN85S9AF,SILICON,2.5mm0.25mm,2	1	SA
.2		BN62-00423A	PAD GAP;UN85S9AF,SILICON,2.5mm0.25mm,2	1	SA
.2		BN62-00424A	PAD GAP;UN85S9AF,SILICON,2.5mm0.25mm,3	1	SA
.2		BN62-00481A	PAD GAP;F9000,PAD GAP,4.5T,50mm,50mm,13E	4	SA
.2		BN62-00484A	PAD GAP;F9000,PAD GAP,9.5T,80mm,20mm,13F	1	SA
.2		BN62-00485A	PAD GAP;F9000,PAD GAP,9.5T,50mm,50mm,13F	1	SNA
.2		BN63-04077A	GASKET;PS63P71FHX,CONDUCTIVE ADHESIVE sp	4	SNA
.2		BN68-05450C	LABEL-JACKPACK;UD9000,ART PAPER,0.08,Bla	1	SNA
.2	FL06	BN96-22728J	ASSY CABLE P-FFC;UHD55 F9000,FFC,NH,180m	1	SA
.2	BT	BN96-25376A	ASSY BOARD P-RF-MODULE;Bluetooth Module,	1	SA
..3	AS BT	BN81-08545A	A/S-BT;Bluetooth Module SCREW	1	SNA
..3		BN97-07275A	ASSY MICOM-BLUETOOTH F/W;BN81-08385A	1	SNA
...4		BN81-08385A	AS-BLUETOOTH F/W;BLUETOOTH F/W	1	SNA
.2	FL06	BN96-26511C	ASSY CABLE P-FFC;F9000,FFC,2H,95mm,41Pin	1	SA
.2	FL06	BN96-26671V	ASSY CABLE P-FFC;F9000,FFC,NH,185mm,20Pi	1	SA
.2	FL06	BN96-28071H	ASSY CABLE P-FFC;UHD55, F9000,FFC,2H,95m	1	SA
.2	FL06	BN96-28071J	ASSY CABLE P-FFC;UHD55,F9000,FFC,2H,170m	1	SA
.2	SP01A	BN96-29039A	ASSY SPEAKER P;Mid-WF 6ohm, TW 6ohm,Mid-	1	SA
.2	CAM	BN96-29221A	ASSY MISC P-AQUILA_UD6;AQUILA_UD6,TV Cam	1	SA
.2		BN96-29259B	ASSY SHIELD P-TOP;US9000,55,EGI-SECC	1	SA
..3	T0073	AA63-01111A	GASKET-EMI;42D5,Conductive Fabric,1.5mm,	1	SNA
..3	T0073	AA63-01413U	GASKET-EMI;42Q7,Conductive Fabric Type,2	1	SNA
..3	T0073	AA63-01528A	GASKET-EMI;63P7,Conductive Fabric,1.5,10	2	SNA
..3		BN62-00443B	HEAT SINK-ASSY;UF9000,A1050,T2.0,SILVER,	1	SNA
..3	AS223	BN63-10881B	SHIELD-TOP;UF9000 UHD 55",ET-SPTE,0.5	1	SNA
..3		BN63-11112A	GASKET;UN85S9AFXZA,Conductive Fabric,1.5	1	SNA
..3		BN63-11114A	GASKET;UN85S9AFXZA,Conductive Fabric,1.5	1	SNA
..3		BN63-11116A	GASKET;UN85S9AFXZA,Conductive Fabric,1.5	1	SNA
.2		BN96-29260A	ASSY SHIELD P-BOTTOM;US9000,65,SECC	1	SA
..3	T0073	AA63-01618A	GASKET-EMI;50Q71,Conductive Fabric,1.0mm	3	SNA
..3		BN63-10997B	SHEET-INSULATOR;F9000,PC,0.43,345.6,69.6	1	SNA
..3		BN63-11319A	SHIELD-BOTTOM;UF9000,SECC,T1.0	1	SNA
..3	RB01	BN63-11328A	COVER-BOTTOM;UF9000,PC+ABS+G/F15%,V1,BK0	1	SNA
..3		BN63-11366A	SHEET-GRAPHITE,BOT;UF9000,EVA 1 SIDE P32	1	SNA
.2	JOG	BN96-29508A	ASSY BOARD P-JOG FUNCTION;S9,SUNGJI,FR-4	1	SA
.2		BN96-29611D	ASSY SHIELD P-PCB,MAIN;UF9000,55/65,EURO	1	SNA
..3		AH63-02929A	GASKET-TAPE;HT-ES6550W,Conductive Fabric	1	SNA
..3	M0131	BH63-00104A	GASKET;POSEIDON,Conductive Fabric,2mm,10	3	SNA

Exploded Views and Parts List

Level	Loc.	Part Code	Description & Specification	Qty.	SA/SNA
...3		BN63-00044A	GASKET-EMI;1503FP,Conductive Fabric,19MM	2	SNA
...3	M0131	BN63-00792A	GASKET;NB21BS,Conductive Fabric,2mm,10mm	1	SNA
...3		BN63-11253B	SHIELD-PCB,MAIN;UF9000 55"/65",PCM,T0.4	1	SNA
.2		BN96-29686A	ASSY SHIELD P-PCB,FRC;US9000,55,SECC	1	SNA
...3	T0073	AA63-01110C	GASKET-EMI;42D5,Conductive Fabric,1.0,10	4	SNA
...3		BN63-04077A	GASKET;PS63P71FHX,CONDUCTIVE ADHESIVE sp	1	SNA
...3		BN63-07188A	GASKET-EMI;PDP 850,Conductive Fabric,15m	1	SNA
...3		BN63-11418A	SHIELD-PCB,FRC;UF9000 55",SECC,T0.5	1	SNA
...3	T0099	BN72-00337C	SPONGE-EMI-BACK;63P3,SHELD FROM,1,10,150	1	SNA
.2	T001A	BN96-29941B	ASSY COVER P-TOP;UF9000,55,65,EO,ABS+PC,	1	SA
...3		BN61-04692A	BOSS-PRIMER;#94,SHEET,clear,35cps	0	SNA
...3		BN61-07463C	BOSS-TAPE;SB970,acryl,T0.25,W15,Transpar	1	SNA
...3	M0131	BN63-00896A	GASKET;NB21BS,Conductive Fabric,5mm,15mm	2	SNA
...3		BN63-11321B	COVER-DECO;UF9000,ABS,HB,NC0001,CR Plati	1	SNA
...3	T001	BN63-11322E	COVER-TOP;UF9000,ABS+PC,V0,BK0008	1	SNA
...3		BN63-11562B	SHEET-COVER;UF9000,PET+SILICON,0.052,W 2	1	SNA
...3		BN96-29870A	ASSY COVER P-SHEET BADGE;UF9000,AL	1	SNA
...4		BN63-11320A	COVER-SHEET;UF9000,SECC,T0.5,VCM	1	SNA
...4		BN64-02417A	BADGE-BRAND;S9 UHD 85",Ni,0.05,L35mm,SIL	1	SNA
.2		BP63-00028A	SHIELD-FOAM;HLM507W,-,10,10,10	5	SNA
1		BN91-11928A	ASSY LCM-AMLCD;BN95-01301A,CY-KF550FSLV2	1	SNA
.2		6001-003016	SCREW-MACHINE;PWH,+,M3.0,L5.0,ZPC(WHT),S	9	SA
.2	P001A	BN44-00675A	DC VSS-LED PD BD;L65D2L_DSM,L65D2L_DSM,A	1	SA
.2	PANEL	BN95-01301A	PRODUCT LCD-AMLCD;LSF550FJ01-S,CY-KF550F	1	SA
...3		6001-002757	SCREW-MACHINE;BH,+,M3,L4,ZPC(WHT),SWRCH1	12	SA
...3		6001-002912	SCREW-MACHINE;CH,+,M3,L3,ZPC(BLK),SWRCH1	24	SNA
...3		6001-003016	SCREW-MACHINE;PWH,+,M3.0,L5.0,ZPC(WHT),S	4	SA
...3		AK68-02233C	LABEL RATING;BD-E,XS,KR,RU,ZW,ART PAPER,	1	SNA
...3		BN02-00102B	TAPE FILAMENT;UE7000,#893,0.15,25,50,WHI	0	SNA
...3		BN02-00145D	TAPE PET-MASKKIING;F9K,PET(BASE FILM),0.	4	SNA
...3		BN67-00473A	RUBBER-FOOT;RUBBER-FOOT,SILICONE,SQUARE,	1	SNA
...3		BN74-00053A	TAPE-PROTECTION;T460BE1-FB,T550BE1-FB,3M	4	SNA
...3		BN90-05011A	ASSY MISC-BLU;UD 9K 55	1	SNA
...4		6001-003010	SCREW-MACHINE;CH,+,M3,L6,ZPC(BLK),SWRCH1	18	SNA
...4		BN02-00102B	TAPE FILAMENT;UE7000,#893,0.15,25,50,WHI	0	SNA
...4		BN02-00231A	TAPE ETC-SHEET FIXING(C);Y13 F9K,PC,0.7T	6	SNA
...4		BN61-09716A	LGP-LED;55inch UD, Lenticular,MS,1221.2	1	SNA
...4		BN63-11331A	SHEET-DBEF;F9K 55inch DBEF,PET,0.4,1210.	1	SNA
...4		BN63-11332A	SHEET-REFLECTOR;F9K 55inch_RL90TL,PET,0.	1	SNA
...4		BN63-11359A	SHEET-DIFFUSER;F9K_55inch_CH154B,PET,0.3	1	SNA

Level	Loc.	Part Code	Description & Specification	Qty.	SA/SNA
...4		BN63-11565A	SHEET-PRISM;UTE34G-10C,PET*,0.295,1210.6	1	SNA
...4		BN96-29071A	ASSY MISC P-LED BAR;55inch UHD LED bar l	1	SNA
...4		BN96-29072A	ASSY MISC P-LED BAR;55inch UHD LED bar r	1	SNA
...4		BN96-29081B	ASSY MISC P-CHASSIS BOTTOM;Y13 F9K 55",S	1	SNA
....5		6001-002912	SCREW-MACHINE;CH,+,M3,L3,ZPC(BLK),SWRCH1	6	SNA
....5		6001-003016	SCREW-MACHINE;PWH,+,M3.0,L5.0,ZPC(WHT),S	4	SA
....5		BN02-00040B	TAPE DOUBLE FACE-DIFFUSER FIXING;NNB 32/	1	SNA
....5		BN02-00102B	TAPE FILAMENT;UE7000,#893,0.15,25,50,WHI	0	SNA
....5		BN02-00113A	TAPE ETC-FIXING WIRE;Y12 NNB2,PET,0.05T,	1	SNA
....5		BN02-00235A	TAPE THERMAL-GRAPHITE L;Y13 F9K 55",E-GR	1	SNA
....5		BN02-00236A	TAPE THERMAL-GRAPHITE R;Y13 F9K 55",E-GR	1	SNA
....5		BN02-00238A	TAPE THERMAL-GRAPHITE REAR L;Y13 F9K 55"	1	SNA
....5		BN02-00239A	TAPE THERMAL-GRAPHITE REAR R;Y13 F9K 55"	1	SNA
....5	EC13	BN39-01853A	LEAD CONNECTOR;UD 55inch Wire-harness_ L	1	SNA
....5	EC13	BN39-01854A	LEAD CONNECTOR;UD 55inch Wire-harness_ RI	1	SNA
....5		BN61-08235A	HOLDER-LGP;SNB,M3*L4.9*SCALOCK,trap,4.9,	2	SNA
....5		BN61-08941A	BRACKET-STAND, PANEL;UF8000 55",SECC,T2.	2	SNA
....5		BN61-09308A	BOSS-BOND;F8K,acrylate Modified,GREEN	7	SNA
....5		BN61-09449A	BRACKET-STOPPER NUT;Y13 SF-LED,M2.6*D4.5	8	SNA
....5		BN62-00440A	INSULATION-S-PCB L;Y13 F9K 55",MTU-100,0	1	SNA
....5		BN62-00441A	INSULATION-S-PCB R;Y13 F9K 55",MTU-100,0	1	SNA
....5		BN62-00442A	INSULATION-POWER BRD;Y13 F9K 55",PC-FIL	1	SNA
....5	CC02	BN64-02432B	CHASSIS-BOTTOM;UD 55 SDC,AL 3104,T1.2,Y2	1	SNA
....5		BN64-02434A	CHASSIS-UPPER PLATE;UD 55,AL 3104,T0.5,Y	1	SNA
...4		BN96-29114C	ASSY FRAME P-MOLD MIDDLE LR;Y13 F9K 55"	2	SNA
....5		BN60-00846B	SPACER-PANEL-LR;Y13 F9K 55",SSP 40,0.5T,	2	SNA
....5		BN60-00848A	SPACER-LGP-LR;Y13 F9K 55",SB00.188T+MKT-	2	SNA
....5		BN61-09700B	FRAME-MOLD MIDDLE LR;UD 55 SDC,PC+G/F10%	2	SNA
...4		BN96-29207B	ASSY FRAME P-MOLD MIDDLE U;Y13 F9K 55",S	1	SNA
....5		BN02-00276A	TAPE ETC-P/G -U;Y13 F9K,PET,0.06T,11,14.	2	SNA
....5		BN60-00843B	SPACER-PANEL-U(A);Y13 F9K 55",SSP 40,0.2	1	SNA
....5		BN60-00843C	SPACER-PANEL-U(B);Y13 F9K 55",SSP 40,0.2	1	SNA
....5		BN60-00843D	SPACER-PANEL-U(C);Y13 F9K 55",SSP 40,0.2	2	SNA
....5		BN61-09738A	FRAME-MOLD MIDDLE U;F9K 55,PC+G/F10%,WHI	1	SNA
...4		BN96-29208B	ASSY FRAME P-MOLD MIDDLE D;Y13 F9K 55",S	1	SNA
....5		BN02-00050A	TAPE DOUBLE FACE;SNB 55",SK2100HE,0.05,2	1	SNA
....5		BN02-00277A	TAPE ETC-P/G -D;Y13 F9K,PET,0.06T,8,17,G	2	SNA
....5		BN60-00844D	SPACER-PANEL-D(A);Y13 F9K 55",SSP 40,0.5	1	SNA
....5		BN60-00844E	SPACER-PANEL-D(B);Y13 F9K 55",SSP 40,0.5	1	SNA
....5		BN60-00844F	SPACER-PANEL-D(C);Y13 F9K 55",SSP 40,0.5	1	SNA

## Exploded Views and Parts List

Level	Loc.	Part Code	Description & Specification	Qty.	SA/SNA
...5		BN60-00844G	SPACER-PANEL-D(D);Y13 F9K 55",SSP 40,0.5	1	SNA
...5		BN60-00847A	SPACER-LGP-UD;Y13 F9K 55",SI(SH0140U)0.2	2	SNA
...5		BN61-09739A	FRAME-MOLD MIDDLE D;F9K 55,PC+G/F10%,WHI	1	SNA
...3	OC_TC	BN96-24430C	ASSY CABLE P-FFC;E7000,FFC,NH,47mm 1,68	4	SNA
...3	TC01A	BN96-29084C	ASSY MISC P-CHASSIS TOP;Y13 F9K 55",SDC,	1	SNA
...4		BN60-00908A	SPACER-TOP;Y13 F9K 55INCH,PET*,1200,BLK,	1	SNA
...4		BN63-07229G	COVER-SHEET;rose70",SILICONE,T0.052,W15m	3	SNA
...4		BN63-10029A	COVER-SHEET;UE9500 75",urethane,T0.052,W	1	SNA
...4		BN64-02130G	BADGE-BRAND;F9K,Ni,0.05,30.0,SILVER,HAIR	1	SNA
...4	AC157	BN64-02430B	CHASSIS-TOP;UD 55 SDC,STAINLESS-ST304,T	1	SNA
...3		BN96-29107B	ASSY COVER P-SOURCE;Y13 F9K 55" SDC,BN63	1	SNA
...4		BN02-00249A	TAPE ETC-COVER SOURCE L;Y13 F9K 55,PET,0	1	SNA
...4		BN02-00250A	TAPE ETC-COVER SOURCE R;Y13 F9K 55,PET,0	1	SNA
...4		BN60-00554A	SPACER-SOURCE;SNB 40/46/55,Silicone-Rubb	8	SNA
...4		BN61-02932N	BRACKET-STOPPER NUT;LED TV,M3,D7,L6.6,BR	5	SNA
...4		BN61-09307A	BRACKET-STOPPER NUT;LED TV,M3*D11*L12.6	4	SNA
...4		BN62-00464A	INSULATION-S-COVER L;Y13 F9K 55" SDC,PET	1	SNA
...4		BN62-00465A	INSULATION-S-COVER R;Y13 F9K 55" SDC,PET	1	SNA
...4		BN63-11275B	SHIELD-SOURCE COVER;UD 55,EGI-SECC,T0.6,	1	SNA
...3		BN96-29198B	ASSY T CON P;LSF550FJ02-S,PCB-CONTROL,8b	1	SA
...3		BN96-29200B	ASSY OPEN CELL;LSF550FJ02-A,8bit,55INCH,	1	SNA
...4		BN81-07436A	A/S-ADHESIVE-A.C.F;ADHESIVE-A.C.F,3-ADHE	1	SNA
...4		BN81-07943A	A/S-ADHESIVE-A.C.F(TP500B);ADHESIVE-A.C.	1	SNA
...4		BN81-09019A	A/S-IC DRIVER SOURCE;IC DRIVER SOURCE,MT	1	SNA
...4		BN81-09020A	A/S-IC DRIVER GATE;IC DRIVER GATE,S6CGV0	1	SNA
...4		BN81-09021A	A/S-POLARIZER-C/F;POLARIZER-C/F,SMLK41FP	1	SNA
...4		BN81-09022A	A/S-POLARIZER-TFT;POLARIZER-TFT,NZBEFTCM	1	SNA
...4		BN81-09023A	A/S-ASSY PCB-SOURCE LEFT;ASSY PCB-SOURCE	1	SNA
...4		BN81-09024A	A/S-ASSY PCB-SOURCE RIGHT;ASSY PCB-SOURC	1	SNA
...3	SB05A	BN96-29272A	ASSY BRACKET P-STAND LINK;UF9000,55,65,E	1	SNA
...4		BN61-09605A	BRACKET-STOPPER NUT;LED TV F6100,Others	4	SNA
...4	CB18	BN61-09751A	BRACKET-STAND LINK;UF9000 55" 65",EGI-SE	1	SNA
1	M0017	BN91-12177J	ASSY CHASSIS;UF9Y	1	SNA
.2	MF01A	BN94-06576A	ASSY PCB MISC-FRC;55 UHD 120Hz	1	SA
...3		BN97-07729A	ASSY SMD;BN94-06576A	1	SNA
...4		0406-001438	DIODE-TVS;SMCJ14A,15.6/-/17.2V,1500W,DO-	1	SA
...4		0501-002080	TR-SMALL SIGNAL;2SC2412K,NPN,200mW,SC-59	1	SA
...4		0505-001844	FET-SILICON;SI4435DDY-T1-GE3,P,-30V,-11.	1	SA
...4		0801-002779	IC-CMOS LOGIC;74LVC1G125,BUS BUFFER,SOT-	1	SA
...4		1204-003426	IC-VIDEO PROCESS;SENK82,HS BGA,734Q,31x3	2	SA



Level	Loc.	Part Code	Description & Specification	Qty.	SA/SNA
...4		2007-000140	R-CHIP;1Kohm,5%,1/16W,TP,1005	20	SNA
...4		2007-000149	R-CHIP;12Kohm,5%,1/16W,TP,1005	2	SA
...4		2007-000509	R-CHIP;2.4Kohm,1%,1/10W,TP,1608	2	SNA
...4		2007-000614	R-CHIP;24Kohm,1%,1/10W,TP,1608	2	SNA
...4		2007-007309	R-CHIP;12Kohm,1%,1/16W,TP,1005,0.35	1	SA
...4		2007-008117	R-CHIP;2.7Kohm,1%,1/16W,TP,1005	2	SA
...4		2007-008263	R-CHIP;3Kohm,1%,1/16W,TP,1005	1	SA
...4		2007-008275	R-CHIP;30Kohm,1%,1/16W,TP,1005	3	SNA
...4	AD480	2203-000627	C-CER,CHIP;0.022nF,5%,50V,C0G,TP,1005	2	SNA
...4	AD480	2203-006698	C-CER,CHIP;1000nF,10%,25V,X7R,TP,1608,0.	2	SNA
...4	AD480	2203-006741	C-CER,CHIP;470nF,10%,25V,X5R,TP,1608,0.8	1	SNA
...4		2703-003790	INDUCTOR-SMD;4.7uH,20%,8080,0.025ohm,450	2	SA
...4		2801-003773	CRYSTAL-SMD;12MHz,30ppm,28-AAN,20pF,50oh	1	SA
...4		3708-003140	CONNECTOR-FPC/FFC/PIC;20P,0.5mm,SMD-A+DI	1	SA
...4		3711-002050	CONNECTOR-HEADER;BOX,10P,1R,1.25mm,SMD-A	2	SNA
...4	EH01	3711-006395	HEADER-BOARD TO CABLE;BOX,41P,2R,0.5 mm,	1	SA
...4	EH01	3711-008441	HEADER-BOARD TO CABLE;BOX,24P,2R,2mm,ANG	1	SA
...4		BN41-02076B	PCB MAIN;uhd_55_65inch_nt72314,FR-4,4,re	1	SNA
...4		BN97-07594A	ASSY MICOM;T-NT9S5M-010E,2013.07.03	1	SNA
...4		BN97-07595A	ASSY MICOM;T-NT9S5S-010E,2013.07.03	1	SNA
....5		1107-002223	IC-NOR FLASH;W25Q16DVSSIG,16Mbit,2Mbitx8	1	SNA
.2	MJ01A	BN94-07092B	ASSY PCB MISC-JACKPACK;UE55F9000SLX*	1	SA
..3		BN97-07926B	ASSY SMD;BN94-07092B	1	SNA
...4	DR01A	0402-001614	DIODE-RECTIFIER;S1G,400V,1A,DO-214AC,TP	2	SA
...4		0403-001552	DIODE-ZENER;DDZ16,15.69/16.51V,500mW,SOD	1	SA
...4		0403-001779	DIODE-ZENER;MMSZ5234BT1G,5.89/6.51V,500m	5	SA
...4		0403-001785	DIODE-ZENER;NZH5V1B,4.94/5.2V,500mW,SOD-	1	SA
...4		0404-001404	DIODE-SCHOTTKY;BAT721C,40V,200mA,SOT-23,	3	SA
...4		0404-001787	DIODE-SCHOTTKY;SS3P4,40V,3000mA,DO-220AA	4	SA
...4		0406-001290	DIODE-TVS;3.0SMCJ20A,22.2/-/24.5V,3000W,	2	SNA
...4		0501-000279	TR-SMALL SIGNAL;KSA1182-Y,PNP,150mW,SOT-	2	SA
...4		0904-002631	IC-USC;QFN,28P,5.0mm X 5.0mm,12MHz,TP,PL	1	SA
...4		1001-001820	IC-VIDEO SWITCH;SiI9575,SOP,176Z30,20X20	1	SNA
...4		1002-001749	IC-D/A CONVERTER;PCM5101A,24,TSSOP,20P,6	1	SA
...4		1201-003183	IC-AUDIO AMP;DRV612,HTSSOP,14P,5x4.4mm,D	1	SA
...4		1203-004363	IC-VOL. DETECTOR;SOT-23,3Z30,2.9x1.6mm,P	1	SA
...4		1203-006017	IC-VOL. DETECTOR;RT9824GJ8,TSOT23,8P,2.9	1	SA
...4		1203-006341	IC-DC/DC CONVERTER;TPS63020DSJ,SON-14,14	1	SA
...4		1203-007238	IC-PWM CONTROLLER;TPS54427,DDA,8P,4.8x3.	2	SNA
...4		1203-007697	IC-DC/DC CONVERTER;LNBH26SPQR,QFN,24Z30,	1	SNA

Exploded Views and Parts List

Level	Loc.	Part Code	Description & Specification	Qty.	SA/SNA
...4		1203-007707	IC-POSLADJUST REG.;AP7362ADJ,SO-8EP,8Z3	1	SA
...4		1203-007757	IC-POSLADJUST REG.;TPS7A7001DDAR,SOIC-8	1	SA
...4		1205-004704	IC-SWITCH;AP2151W-7,SOT25,5Z30,3.1*3.0mm	1	SA
...4		1205-004936	IC-RECEIVER;TI34B1577R,TQFP,100P,14x14mm	1	SA
...4		2007-000146	R-CHIP;6.8Kohm,5%,1/16W,TP,1005	1	SNA
...4		2007-000153	R-CHIP;22Kohm,5%,1/16W,TP,1005	4	SNA
...4		2007-000155	R-CHIP;27Kohm,5%,1/16W,TP,1005	1	SNA
...4		2007-000329	R-CHIP;11Kohm,5%,1/10W,TP,1608	1	SA
...4		2007-000775	R-CHIP;33Kohm,5%,1/16W,TP,1005	2	SNA
...4		2007-001116	R-CHIP;680ohm,1%,1/10W,TP,1608	1	SA
...4		2007-001168	R-CHIP;75ohm,5%,1/4W,TP,3216	3	SA
...4		2007-001284	R-CHIP;4.7ohm,5%,1/16W,TP,1005	8	SNA
...4		2007-001298	R-CHIP;51ohm,5%,1/16W,TP,1005	2	SNA
...4		2007-001308	R-CHIP;200ohm,5%,1/16W,TP,1005	1	SNA
...4		2007-001335	R-CHIP;36Kohm,5%,1/16W,TP,1005	1	SA
...4		2007-003015	R-CHIP;2.2ohm,5%,1/16W,TP,1005	1	SNA
...4		2007-007001	R-CHIP;3.9Kohm,5%,1/16W,TP,1005	1	SA
...4		2007-007004	R-CHIP;12Kohm,1%,1/10W,TP,1608	1	SA
...4		2007-007095	R-CHIP;390ohm,5%,1/16W,TP,1005	1	SA
...4		2007-007136	R-CHIP;4.7Kohm,1%,1/16W,TP,1005	3	SNA
...4		2007-007137	R-CHIP;1.2Kohm,1%,1/16W,TP,1005	1	SA
...4		2007-007305	R-CHIP;120ohm,1%,1/16W,TP,1005	2	SNA
...4		2007-007311	R-CHIP;22Kohm,1%,1/16W,TP,1005	1	SA
...4		2007-007313	R-CHIP;6.8Kohm,1%,1/16W,TP,1005	1	SA
...4		2007-007314	R-CHIP;5.6Kohm,1%,1/16W,TP,1005	1	SA
...4		2007-007480	R-CHIP;130Kohm,1%,1/16W,TP,1005	2	SA
...4		2007-007720	R-CHIP;300Kohm,1%,1/10W,TP,1608	1	SA
...4		2007-007736	R-CHIP;510Kohm,1%,1/10W,TP,1608	1	SA
...4		2007-007798	R-CHIP;10ohm,1%,1/16W,TP,1005	1	SA
...4		2007-008293	R-CHIP;475ohm,1%,1/16W,TP,1005	2	SA
...4		2007-008391	R-CHIP;6.34Kohm,1%,1/16W,TP,1005	1	SA
...4		2007-009138	R-CHIP;33Kohm,1%,1/16W,TP,1005	1	SNA
...4		2011-001586	R-NETWORK;1Kohm,5%,1/16W,L,CHIP-V,4P,TP,	1	SNA
...4		2011-001589	R-NETWORK;0ohm,5%,1/16W,L,CHIP-V,4P,TP,1	4	SNA
...4		2011-001590	R-NETWORK;47Kohm,5%,1/16W,L,CHIP-V,4P,TP	1	SNA
...4	AD480	2203-000278	C-CER,CHIP;0.01nF,0.5pF,50V,C0G,TP,1005	4	SA
...4	AD480	2203-000585	C-CER,CHIP;0.22nF,10%,50V,X7R,TP,1005	2	SA
...4	AD480	2203-000812	C-CER,CHIP;0.033nF,5%,50V,C0G,TP,1005	12	SA
...4	AD480	2203-001211	C-CER,CHIP;8.2nF,10%,50V,X7R,TP,1608	1	SA
...4	AD480	2203-001697	C-CER,CHIP;0.082nF,5%,50V,NP0,TP,1608	1	SA

Level	Loc.	Part Code	Description & Specification	Qty.	SA/SNA
...4	AD480	2203-005642	C-CER,CHIP;0.22nF,5%,50V,NP0,TP,1005	1	SNA
...4	AD480	2203-006024	C-CER,CHIP;2200nF,10%,10V,X7R,TP,2012	2	SNA
...4	AD480	2203-006126	C-CER,CHIP;47nF,10%,16V,X7R,TP,1005	1	SNA
...4	AD480	2203-006307	C-CER,CHIP;1000nF,10%,25V,X5R,TP,2012	1	SNA
...4	AD480	2203-006324	C-CER,CHIP;2200nF,10%,10V,X5R,TP,1608	4	SA
...4	AD480	2203-006399	C-CER,CHIP;1000nF,10%,6.3V,X5R,TP,1005	1	SA
...4	AD480	2203-006992	C-CER,CHIP;0.33nF,5%,50V,C0G,TP,1005	2	SNA
...4	AD480	2203-007270	C-CER,CHIP;10000nF,10%,10V,X5R,TP,1608,0	1	SNA
...4	AD480	2203-007401	C-CER,CHIP;10000nF,10%,50V,X5R,TP,3225	4	SA
...4	AD480	2203-007563	C-CER,CHIP;1000nF,10%,10V,X5R,TP,1005	1	SA
...4	AD480	2203-007569	C-CER,CHIP;0.033nF,5%,50V,C0G,TP,1005	4	SA
...4	AD480	2203-008096	C-CER,CHIP;2200nF,10%,50V,X5R,TP,2012,1.	2	SA
...4		2703-000158	INDUCTOR-SMD;1uH,10%,2012,.40ohm,50mA,45,	3	SA
...4		2703-000408	INDUCTOR-SMD;3.3uH,20%,3225,.28ohm,500mA	2	SA
...4		2703-001229	INDUCTOR-SMD;2.2uH,10%,1608,1.150ohm,15mA	1	SC
...4		2703-001938	INDUCTOR-SMD;56nH,5%,1005,1.50ohm,200mA,1	3	SA
...4		2703-003719	INDUCTOR-SMD;6.8uH,20%,10x11x3.8mm,.026o	2	SA
...4		2801-000102	CRYSTAL-SMD;12MHz,30ppm,12pF,100ohm,TP	1	SA
...4		2801-004621	CRYSTAL-SMD;27MHz,15ppm,-,14pF,30ohm,TP	2	SA
...4		2801-004813	CRYSTAL-SMD;24MHz,50ppm,8pF,100ohm,TP	1	SA
...4		2801-004814	CRYSTAL-SMD;25MHz,50ppm,8pF,100ohm,TP	1	SA
...4		2801-005291	CRYSTAL-SMD;12MHz,30ppm,4 PIN,16pF,100Oh	1	SNA
...4		2801-005292	CRYSTAL-SMD;24.576MHz,30ppm,4 PIN,12pF,7	1	SA
...4		2901-001506	FILTER-EMI SMD;5V,0.13A,0pF,2x1x0.5mm,TP	2	SA
...4		3404-001379	SWITCH-TACT;12V,50mA,250gf,4.9x4.9x1.5mm	1	SA
...4		3701-001861	CONNECTOR-HDMI;19P,2ROW,FEMALE,SMD-A,AU	4	SA
...4		3707-001104	CONNECTOR-OPTICAL;SMD-A(Ultra Slim),SPDI	1	SA
...4		3710-002276	SOCKET-INTERFACE;24P,1R,0.5mm,SMD-A,AU,B	1	SC
...4		3710-003900	SOCKET-INTERFACE;34P,2R,0.5mm,SMD-A,AU,B	1	SA
...4		3722-003199	JACK-MODULAR;8P/8C,ANGLE,AU,1P	1	SA
...4		3722-003665	JACK-PHONE;1P/7C,AU/NI,YEL,ANGLE	1	SA
...4		3722-003666	JACK-PHONE;1P/7C,AU/NI,GRN,ANGLE	1	SA
...4		BN13-00063A	PLD;MAXQ610J,QFN,44	1	SNA
...4	ET01	BN40-00267A	TUNER;DN1T243IH145A,DN1T243IH145A,DVB-T2	1	SA
...4		BN41-02115B	PCB MAIN;UHD,FR-4,8,B,1.6T,350*100,1	1	SNA
...4		BN97-07372A	ASSY MICOM;T-FOXDEUS6-2005,2013.10.23	1	SNA
...4		BN97-07922A	ASSY MICOM;8051Fw-Rx-v1.13,2013.10.25	1	SNA
....5		1107-002226	IC-NOR FLASH;W25Q40CLSSIP,4Mbit,SOIC,8P,	1	SNA
.2	M0014	BN94-07299J	ASSY PCB MAIN;UF9Y	1	SA
..3		0202-001608	SOLDER-WIRE FLUX;LFC7-107,D0.8,99.3Sn/0.	0	SNA

Exploded Views and Parts List

Level	Loc.	Part Code	Description & Specification	Qty.	SA/SNA
...3		BN62-00273B	HEAT SINK-PS;TV Echo-P,A5052,5t,BLACK,40	4	SNA
...3		BN62-00365A	HEAT SINK-PS;UN46ESF8000AF,A1050,ANODIZI	1	SNA
...3		BN62-00372A	HEAT SINK-PS;F7000/8000,A5052*,BLACK,30*	1	SNA
...3		BN97-07455A	ASSY DRM-KEY CODE-ASS'Y;HDCP2.0 / MIRACA	1	SNA
...4		BN46-00109H	KEY CODE-CERTIFI;MAC,TV/AV,General	1	SNA
...4		BN46-00110N	KEY CODE-CERTIFI;MIRACAST,TV,X12 /X13	1	SNA
...4		BN46-00334A	KEY CODE-CERTIFI;CI+,TV,FOX,Euro	1	SNA
...4		BN46-00340A	KEY CODE-CERTIFI;UHD TV S9000(SerDes),HD	1	SNA
...3		BN97-07932D	ASSY SMD;BN94-07112W	1	SNA
...4		0202-001899	SOLDER-CREAM;M705-GRN360-K2-VT,25-36um,S	5	SNA
...4	DS01A	0401-001056	DIODE-SWITCHING;MMBD4148SE,100V,200mA,SO	3	SA
...4		0406-001200	DIODE-TVS;RCLAMP0504F,6/-V,150W,SC-70	3	SA
...4		0501-000445	TR-SMALL SIGNAL;KTC3875S-Y,NPN,150mW,SOT	6	SC
...4		0504-000126	TR-DIGITAL;KSR1101,NPN,200mW,4.7K/4.7Koh	2	SA
...4		0505-000110	FET-SILICON;2N7002,N,60V,115mA,7.5ohm,0.	1	SA
...4		0505-002598	FET-SILICON;AP2317GN,P,-20V,-4.2A,0.052o	1	SA
...4		0801-002628	IC-CMOS LOGIC;7SZ08,2-INPUT AND GATE,SC-	1	SA
...4		0801-002630	IC-CMOS LOGIC;74AHCT1G08,2-INPUT AND GAT	1	SA
...4		0801-002780	IC-CMOS LOGIC;74LVC1G17,SCHMITT-TRIGGER	2	SA
...4		0801-003330	IC-CMOS LOGIC;Octal buffer,DQFN,20P,4.5x	8	SA
...4		0801-003408	IC-CMOS LOGIC;74AUP1G32GW,2 input OR Gat	1	SNA
...4		0801-003424	IC-CMOS LOGIC;74VHCV541,Octal schmitt bu	1	SA
...4		0802-001012	IC-CMOS LOGIC;74LCX245,TRANSCEIVER,DQFN,	1	SNA
...4		0904-002714	IC-USC;QFN,28P,5.0mm X 5.0mm,12MHz,TP,PL	1	SA
...4		1001-001545	IC-ANALOG MULTIPLEX;TS3USB221ERSER,R-PQF	4	SA
...4		1001-001686	IC-ANALOG MULTIPLEX;74LV4052,CMOS,TTSOP,	2	SA
...4		1001-001828	IC-ANALOG SWITCH;TS3V330PWR,TSSOP,16P,6.	1	SA
...4		1006-001479	IC-BUS TRANSCEIVER;SN74AVC8T245PWR,TSSOP	6	SA
...4		1006-001509	IC-DRIVER/RECEIVER;MAX3222ECPWR,TSSOP,20	1	SA
...4		1103-001564	IC-EEPROM;S-24C512CI-J800,512Kbit,64Kx8,	1	SA
...4		1105-002393	IC-DDR3 SDRAM;K4B8G1646B-MCK0,DDR3 1600,	2	SNA
...4		1105-002442	IC-DDR3 SDRAM;K4B2G1646E-BCK0,DDR3 1600,	4	SNA
...4		1201-003528	IC-AUDIO AMP;NTP7412S2,MLF,48Z30,7x7mm,D	2	SNA
...4		1203-006109	IC-POSIFIXED REG.;S-1206B33-M3T1G,SOT-2	1	SA
...4		1203-006130	IC-POSIFIXED REG.;S-1172B25-U5T1G,SOT-8	2	SA
...4		1203-006135	IC-POSIFIXED REG.;AP1117D-33-GZ-13-89,T	2	SA
...4		1203-006136	IC-POSIFIXED REG.;AP1117D-18-GZ-13-89,T	3	SA
...4		1203-007018	IC-DC/DC CONVERTER;TPS54821RHL,QFN,14P,3	1	SA
...4		1203-007242	IC-POSIAJUST REG.;G2992BP11U,SOP-8,8P,	1	SA
...4		1203-007502	IC-DC/DC CONVERTER;AOZ3011PI,SO-8,8Z30,4	6	SA

Level	Loc.	Part Code	Description & Specification	Qty.	SA/SNA
...4		1203-007547	IC-DC/DC CONVERTER;SN1202033DAPR,HTSSOP,	2	SA
...4		1203-007552	IC-DC/DC CONVERTER;TPS56921PWPR,HTSSOP,2	2	SA
...4		1203-007728	IC-VOL. DETECTOR;RT9831GQW,QW : WQFN-20L	1	SA
...4		1203-007755	IC-DC/DC CONVERTER;TPS65253RHD,VQFN,28P,	1	SA
...4		1204-003401	IC-VIDEO PROCESS;SDP1201,FBGA,756Z30,27x	2	SA
...4		1204-003402	IC-DECODER;SDP1202,FCBGA,784Z30,27x27mm,	1	SA
...4		1205-004385	IC-ETHERNET CONTROLLER;RTL8201F-VB-CGT,Q	2	SA
...4		1205-004447	IC-SWITCH;TPS2051CDBVR,SOT23-5,5P,3x1.65	1	SA
...4		1205-004692	IC-SWITCH;TPS2069CDBVR,SOT-23,5P,5.0x3.1	2	SNA
...4		1205-004853	IC-BUFFER;DS15BR400TSQ/NOPB,WQFN,32P,5x5	3	SA
...4	IS01	1209-002183	IC-SENSOR;S-5851AAA-M6T1U,SOT,6Z30,2.9x1	1	SA
...4		1405-001271	VARISTOR;35V,20Vdc,5A,1.0x0.5x0.6mm,TP,1	1	SA
...4		2007-000039	R-CHIP;0ohm,1%,1/10W,TP,1608	2	SA
...4		2007-000041	R-CHIP;475ohm,1%,1/10W,TP,1608	2	SA
...4		2007-000052	R-CHIP;10Kohm,1%,1/10W,TP,1608	1	SA
...4		2007-000060	R-CHIP;100Kohm,1%,1/10W,TP,1608	9	SNA
...4		2007-000070	R-CHIP;0ohm,5%,1/10W,TP,1608	6	SA
...4		2007-000078	R-CHIP;1Kohm,5%,1/10W,TP,1608	1	SA
...4		2007-000080	R-CHIP;2Kohm,5%,1/10W,TP,1608	7	SNA
...4		2007-000084	R-CHIP;4.7Kohm,5%,1/10W,TP,1608	2	SA
...4		2007-000137	R-CHIP;2Kohm,5%,1/16W,TP,1005	1	SNA
...4		2007-000138	R-CHIP;100ohm,5%,1/16W,TP,1005	51	SA
...4		2007-000143	R-CHIP;4.7Kohm,5%,1/16W,TP,1005	58	SNA
...4		2007-000148	R-CHIP;10Kohm,5%,1/16W,TP,1005	8	SA
...4		2007-000157	R-CHIP;47Kohm,5%,1/16W,TP,1005	2	SNA
...4		2007-000162	R-CHIP;100Kohm,5%,1/16W,TP,1005	4	SNA
...4		2007-000170	R-CHIP;1Mohm,5%,1/16W,TP,1005	6	SNA
...4		2007-000171	R-CHIP;0ohm,5%,1/16W,TP,1005	182	SNA
...4		2007-000172	R-CHIP;10ohm,5%,1/16W,TP,1005	2	SNA
...4		2007-000173	R-CHIP;22ohm,5%,1/16W,TP,1005	43	SNA
...4		2007-000174	R-CHIP;47ohm,5%,1/16W,TP,1005	26	SNA
...4		2007-000208	R-CHIP;1.1Kohm,1%,1/10W,TP,1608	1	SA
...4		2007-000219	R-CHIP;1.2Kohm,1%,1/10W,TP,1608	1	SA
...4		2007-000336	R-CHIP;120Kohm,1%,1/10W,TP,1608	1	SA
...4		2007-000343	R-CHIP;120ohm,1%,1/10W,TP,1608	2	SA
...4		2007-000536	R-CHIP;200ohm,1%,1/10W,TP,1608	3	SA
...4		2007-000591	R-CHIP;22ohm,1%,1/10W,TP,1608	1	SNA
...4		2007-000640	R-CHIP;270ohm,1%,1/10W,TP,1608	1	SA
...4		2007-000683	R-CHIP;3.3Kohm,1%,1/10W,TP,1608	3	SA
...4		2007-000695	R-CHIP;3.3ohm,5%,1/10W,TP,1608	8	SNA

Exploded Views and Parts List

Level	Loc.	Part Code	Description & Specification	Qty.	SA/SNA
...4		2007-000708	R-CHIP;3.9Kohm,1%,1/10W,TP,1608	2	SNA
...4		2007-000726	R-CHIP;300ohm,1%,1/10W,TP,1608	1	SA
...4		2007-000772	R-CHIP;33Kohm,1%,1/10W,TP,1608	4	SA
...4		2007-000803	R-CHIP;36Kohm,1%,1/10W,TP,1608	2	SA
...4		2007-000816	R-CHIP;390Kohm,1%,1/10W,TP,1608	1	SNA
...4		2007-000828	R-CHIP;39Kohm,1%,1/10W,TP,1608	3	SA
...4		2007-000857	R-CHIP;4.3Kohm,1%,1/10W,TP,1608	5	SNA
...4		2007-000869	R-CHIP;4.7Kohm,1%,1/10W,TP,1608	5	SA
...4		2007-000932	R-CHIP;470ohm,5%,1/16W,TP,1005	1	SNA
...4		2007-001068	R-CHIP;6.8Kohm,1%,1/10W,TP,1608	2	SA
...4		2007-001090	R-CHIP;620ohm,1%,1/10W,TP,1608	1	SA
...4		2007-001156	R-CHIP;750ohm,5%,1/16W,TP,1005	1	SNA
...4		2007-001313	R-CHIP;330ohm,5%,1/16W,TP,1005	2	SNA
...4		2007-001319	R-CHIP;1.2Kohm,5%,1/16W,TP,1005	1	SA
...4		2007-001325	R-CHIP;3.3Kohm,5%,1/16W,TP,1005	2	SNA
...4		2007-002425	R-CHIP;1ohm,5%,1/10W,TP,1608	6	SNA
...4		2007-007107	R-CHIP;100Kohm,1%,1/16W,TP,1005	11	SNA
...4		2007-007132	R-CHIP;15Kohm,1%,1/16W,TP,1005	4	SA
...4		2007-007134	R-CHIP;39Kohm,1%,1/16W,TP,1005	3	SA
...4		2007-007135	R-CHIP;18Kohm,1%,1/16W,TP,1005	2	SNA
...4		2007-007138	R-CHIP;27Kohm,1%,1/16W,TP,1005	1	SNA
...4		2007-007139	R-CHIP;47Kohm,1%,1/16W,TP,1005	13	SA
...4		2007-007142	R-CHIP;10Kohm,1%,1/16W,TP,1005	35	SNA
...4		2007-007156	R-CHIP;1ohm,5%,1/16W,TP,1005	10	SNA
...4		2007-007238	R-CHIP;8.25Kohm,1%,1/10W,TP,1608	1	SA
...4		2007-007306	R-CHIP;100ohm,1%,1/16W,TP,1005	10	SNA
...4		2007-007312	R-CHIP;20Kohm,1%,1/16W,TP,1005	5	SA
...4		2007-007315	R-CHIP;3.9Kohm,1%,1/16W,TP,1005	1	SNA
...4		2007-007316	R-CHIP;3.3Kohm,1%,1/16W,TP,1005	3	SNA
...4		2007-007317	R-CHIP;2.2Kohm,1%,1/16W,TP,1005	1	SA
...4		2007-007318	R-CHIP;1Kohm,1%,1/16W,TP,1005	36	SNA
...4		2007-007439	R-CHIP;174ohm,1%,1/10W,TP,1608	1	SA
...4		2007-007470	R-CHIP;7.5Kohm,1%,1/16W,TP,1005	2	SNA
...4		2007-007517	R-CHIP;240ohm,1%,1/16W,TP,1005	16	SNA
...4		2007-007528	R-CHIP;1.5Kohm,1%,1/16W,TP,1005	6	SA
...4		2007-007617	R-CHIP;2.49Kohm,1%,1/10W,TP,1608	2	SA
...4		2007-007651	R-CHIP;9.1Kohm,1%,1/10W,TP,1608	1	SA
...4		2007-007668	R-CHIP;68.1Kohm,1%,1/10W,TP,1608	1	SA
...4		2007-007698	R-CHIP;5.1Kohm,1%,1/16W,TP,1005	4	SNA
...4		2007-007766	R-CHIP;2Kohm,1%,1/16W,TP,1005	42	SNA

Level	Loc.	Part Code	Description & Specification	Qty.	SA/SNA
...4		2007-007861	R-CHIP;62Kohm,1%,1/16W,TP,1005	2	SA
...4		2007-007981	R-CHIP;180Kohm,1%,1/16W,TP,1005	1	SNA
...4		2007-007992	R-CHIP;1ohm,1%,1/10W,TP,1608	9	SA
...4		2007-008015	R-CHIP;75ohm,1%,1/16W,TP,1005	3	SNA
...4		2007-008133	R-CHIP;56.2Kohm,1%,1/10W,TP,1608	1	SA
...4		2007-008213	R-CHIP;4.3Kohm,1%,1/16W,TP,1005	1	SNA
...4		2007-008294	R-CHIP;33ohm,1%,1/16W,TP,1005	3	SA
...4		2007-008298	R-CHIP;49.9ohm,1%,1/16W,TP,1005	2	SA
...4		2007-008332	R-CHIP;11.5Kohm,1%,1/16W,TP,1005	4	SA
...4		2007-008426	R-CHIP;12.4Kohm,1%,1/10W,TP,1608	1	SA
...4		2007-008779	R-CHIP;0ohm,1%,1/16W,TP,1005	4	SA
...4		2007-009853	R-CHIP;1.6Kohm,1%,1/16W,TP,1005	2	SNA
...4		2011-000002	R-NETWORK;22ohm,5%,1/16W,L,CHIP,8P,TP,32	6	SA
...4		2011-001262	R-NETWORK;22ohm,5%,1/16W,L,CHIP,8P,TP,2.	3	SA
...4		2011-001344	R-NETWORK;100ohm,5%,1/16W,L,CHIP,8P,TP,2	5	SA
...4		2011-001345	R-NETWORK;10Kohm,5%,1/16W,L,CHIP,8P,TP,2	1	SA
...4		2011-001396	R-NETWORK;4.7Kohm,5%,1/16W,L,CHIP,8P,TP,	2	SA
...4		2011-001449	R-NETWORK;22ohm,5%,1/16W,L,4P,TP,1010	3	SA
...4		2011-001497	R-NETWORK;470ohm,5%,1/16W,L,CHIP,4P,TP,1	2	SNA
...4		2011-001506	R-NETWORK;10Kohm,5%,1/16W,L,CHIP,4P,TP,1	2	SNA
...4		2011-001527	R-NETWORK;4.7Kohm,5%,1/16W,L,CHIP,4P,TP,	8	SNA
...4		2011-001587	R-NETWORK;100ohm,5%,1/16W,L,CHIP-V,4P,TP	5	SNA
...4	AD480	2203-000233	C-CER,CHIP;0.1nF,5%,50V,C0G,TP,1005	13	SA
...4	AD480	2203-000257	C-CER,CHIP;10nF,10%,50V,X7R,TP,1608	7	SA
...4	AD480	2203-000330	C-CER,CHIP;0.012nF,5%,50V,C0G,TP,1005	10	SA
...4	AD480	2203-000384	C-CER,CHIP;0.015nF,5%,50V,C0G,TP,1608,0.	4	SNA
...4	AD480	2203-000386	C-CER,CHIP;0.015nF,5%,50V,C0G,TP,1005	5	SA
...4	AD480	2203-000425	C-CER,CHIP;0.018nF,5%,50V,C0G,TP,1005	1	SA
...4	AD480	2203-000438	C-CER,CHIP;1nF,10%,50V,X7R,TP,1005	19	SA
...4	AD480	2203-000489	C-CER,CHIP;2.2nF,10%,50V,X7R,TP,1005	11	SA
...4	AD480	2203-000530	C-CER,CHIP;2.7nF,10%,50V,X7R,TP,1005,-	2	SNA
...4	AD480	2203-000679	C-CER,CHIP;0.027nF,5%,50V,C0G,TP,1005	2	SA
...4	AD480	2203-000714	C-CER,CHIP;3.3nF,10%,50V,X7R,TP,1005	9	SA
...4	AD480	2203-000761	C-CER,CHIP;330nF,10%,16V,X7R,TP,2012	1	SNA
...4	AD480	2203-000885	C-CER,CHIP;4.7nF,10%,25V,X7R,TP,1005	5	SNA
...4	AD480	2203-000975	C-CER,CHIP;47nF,10%,25V,X7R,TP,1608	6	SNA
...4	AD480	2203-000995	C-CER,CHIP;0.047nF,5%,50V,C0G,TP,1005	2	SA
...4	AD480	2203-001554	C-CER,CHIP;1.8nF,10%,50V,X7R,TP,1608	14	SA
...4	AD480	2203-001634	C-CER,CHIP;33nF,10%,50V,X7R,TP,1608	1	SNA
...4	AD480	2203-002050	C-CER,CHIP;47nF,10%,50V,X7R,TP,1608	4	SA

Exploded Views and Parts List

Level	Loc.	Part Code	Description & Specification	Qty.	SA/SNA
...4	AD480	2203-002285	C-CER,CHIP;10nF,10%,50V,X7R,TP,1005	18	SNA
...4	AD480	2203-002398	C-CER,CHIP;22nF,10%,50V,X7R,TP,1608	1	SNA
...4	AD480	2203-002720	C-CER,CHIP;10nF,10%,25V,X7R,TP,1005,0.5T	1	SNA
...4	AD480	2203-002982	C-CER,CHIP;6.8nF,10%,50V,X7R,TP,1005	3	SA
...4	AD480	2203-005054	C-CER,CHIP;0.0047nF,0.25pF,50V,NP0,TP,10	3	SA
...4	AD480	2203-005083	C-CER,CHIP;220nF,10%,50V,X7R,TP,1608,0.8	4	SA
...4	AD480	2203-005249	C-CER,CHIP;100nF,10%,50V,X7R,TP,1608	22	SNA
...4	AD480	2203-005344	C-CER,CHIP;22nF,10%,25V,X7R,TP,1005,0.5T	23	SNA
...4	AD480	2203-005393	C-CER,CHIP;0.005nF,0.1pF,50V,NP0,TP,1005	6	SNA
...4	AD480	2203-005481	C-CER,CHIP;47nF,10%,10V,X7R,TP,1005	2	SA
...4	AD480	2203-006048	C-CER,CHIP;100nF,10%,10V,X7R,TP,1005	544	SA
...4	AD480	2203-006088	C-CER,CHIP;330nF,10%,10V,X7R,TP,1608	1	SA
...4	AD480	2203-006158	C-CER,CHIP;100nF,10%,16V,X7R,TP,1005,0.5	110	SNA
...4	AD480	2203-006260	C-CER,CHIP;220nF,10%,10V,X5R,TP,1005,-	2	SNA
...4	AD480	2203-006348	C-CER,CHIP;1000nF,10%,25V,X5R,TP,1608,0.	1	SA
...4	AD480	2203-006361	C-CER,CHIP;10000nF,10%,10V,X5R,TP,2012	9	SC
...4	AD480	2203-006474	C-CER,CHIP;22000nF,20%,6.3V,X5R,TP,2012	22	SA
...4	AD480	2203-006562	C-CER,CHIP;1000nF,10%,10V,X5R,TP,1005	35	SNA
...4	AD480	2203-006824	C-CER,CHIP;4700nF,10%,10V,X5R,TP,1608,-	15	SNA
...4	AD480	2203-006890	C-CER,CHIP;10000nF,20%,6.3V,X5R,TP,1608	30	SNA
...4	AD480	2203-007176	C-CER,CHIP;10000nF,10%,16V,X5R,TP,2012,1	16	SNA
...4	AD480	2203-007240	C-CER,CHIP;22000nF,20%,6.3V,X5R,TP,1608,	45	SA
...4	AD480	2203-007269	C-CER,CHIP;22000nF,20%,10V,X5R,TP,2012,0	24	SNA
...4	AD480	2203-007306	C-CER,CHIP;10000nF,10%,25V,X5R,TP,2012,1	8	SNA
...4	AD480	2203-007513	C-CER,CHIP;10000nF,10%,10V,X5R,TP,1608,0	157	SA
...4	AD480	2203-007544	C-CER,CHIP;100nF,10%,50V,X7R,TP,1005	76	SA
...4	AD480	2203-007581	C-CER,CHIP;0.1nF,5%,50V,COG,TP,1608	2	SA
...4		2402-001088	C-AL,SMD;220uF,20%,35V,LZ,TP,8.3x8.3x10.	4	SA
...4		2409-001118	C-POLYMER ,CHIP;47uF,20%,10V,WT,TP,3.5X2	11	SA
...4		2409-001191	C-ORGANIC,SMD;47uF,20%,20V,TP,7343(1.9T)	1	SA
...4		2503-001051	C-NETWORK;100nFx4,20%,16V,2012	1	SA
...4		2703-003135	INDUCTOR-SMD;4.7uH,20%,6965,0.04Ohm,7000	5	SNA
...4		2703-003263	INDUCTOR-SMD;3.3uH,20%,10.0x10.0mm,0.011	1	SNA
...4		2703-003713	INDUCTOR-SMD;1.5uH,20%,7366,0.015ohm,700	6	SA
...4		2703-003937	INDUCTOR-SMD;1uH,20%,7.0x6.47x3.0mm,0.00	2	SA
...4		2703-004145	INDUCTOR-SMD;2.2uH,20%,6.5 x 6.9mm,0.20o	1	SNA
...4		2703-004457	INDUCTOR-SMD;10uH,20%,8080 (4.5T),0.074O	8	SNA
...4		2801-003856	CRYSTAL-SMD;0.032768MHz,20ppm,28-ACP,7pF	1	SNA
...4		2801-003948	CRYSTAL-SMD;12MHz,30ppm,28-AAN,12pF,60oh	1	SA
...4		2801-004021	CRYSTAL-SMD;24.576MHz,20ppm,28-AAN,12pF,	2	SA



Level	Loc.	Part Code	Description & Specification	Qty.	SA/SNA
...4		2801-004734	CRYSTAL-SMD;25.000000MHz,20ppm,28-AAN,12	3	SA
...4		2801-004774	CRYSTAL-SMD;24MHz,30ppm,14pF,30ohm,TP	3	SA
...4		2801-004775	CRYSTAL-SMD;12MHz,30ppm,16pF,30ohm,TP	1	SNA
...4		2804-001994	OSCILLATOR-CLOCK;78.125MHz,150ppm,TP,3.3	1	SA
...4		2806-001308	OSCILLATOR-VCXO;27MHz,-,30PF,TP,3.3V,50M	1	SA
...4		3301-000314	BEAD-SMD;120ohm,1608,TP,120ohm/100MHz	3	SNA
...4		3301-001727	BEAD-SMD;120ohm,1005,TP,100MHz,-	5	SA
...4		3301-002039	BEAD-SMD;26ohm,1608,TP	132	SA
...4		3601-001374	FUSE-SURFACE MOUNT;32V,5A,FAST-ACTING,PL	4	SA
...4		3708-003043	CONNECTOR-FPC/FFC/PIC;80P,0.5mm,SMD-A+DI	1	SA
...4		3709-001712	CONNECTOR-CARD SLOT;68P,1.27mm,ANGLE,AU,	1	SA
...4		3710-003901	SOCKET-INTERFACE;34P,2R,0.5mm,SMD-A,AU,B	1	SA
...4	EH01	3711-005872	HEADER-BOARD TO CABLE;BOX,5P,1R,2MM,SMD-	1	SA
...4	EH01	3711-005925	HEADER-BOARD TO CABLE;BOX,51P,1R,0.5mm,S	1	SA
...4	EH01	3711-007582	HEADER-BOARD TO CABLE;BOX,8P,1R,2.0mm,AN	1	SA
...4	EH01	3711-007742	HEADER-BOARD TO CABLE;BOX,20P,2R,2mm,ANG	1	SA
...4		3711-007776	CONNECTOR-HEADER;BOX,8P,1R,1.25mm,SMD-A,	1	SA
...4	EH01	3711-007803	HEADER-BOARD TO CABLE;BOX,12P,1R,1.25mm,	1	SA
...4	EH01	3711-007814	HEADER-BOARD TO CABLE;BOX,4P,1R,1.25mm,S	2	SA
...4	EH01	3711-008558	HEADER-BOARD TO CABLE;BOX,26P,2R,1.25mm,	1	SA
...4		3722-003457	JACK-USB;4P/1C,NI,BLK,A	1	SA
...4		3722-003657	JACK-PHONE;1P/7C,P-BRONZE,BLK,ANGLE	1	SA
...4		BN13-00065A	IC ASIC-DECODER;SDP1210,UHD,1444,3.3V (D	1	SA
...4		BN13-00066A	IC ASIC-DECODER;SDP1211,UHD,421,3.3V (I/	1	SA
...4		BN41-02116A	PCB MAIN;FR-4,8,1.6T,310*218,1	1	SNA
...4		BN97-07670A	ASSY MICOM-SUB;T-FOXDEUS5-2005,2013.10.2	1	SNA
....5		0903-001863	IC-MICROCONTROLLER;WT61P807-RG48,LQFP,48	1	SA
...4		BN97-07685A	ASSY MICOM-MAIN;T-FXP9DEUC_****,U91A,KLM	1	SNA
....5		1107-002077	IC-NAND FLASH;KLM4G1FE3B-B001,4Gbyte,32G	1	SA
1		BN92-13413E	ASSY BOX;UF9000,55	1	SNA
.2		BH68-00662A	LABEL BOX-01;ALL MODEL,ART PAPER,60,110,	1	SNA
.2		BN69-09349A	BOX-SET,IN;55UF9000,CB,C-01,DW1,YEL, BB	1	SNA
.2		BN69-09350C	BOX-SET,OUT;55UF9000,CB,C-03,DW3,YEL,W14	1	SNA
1		BN92-13414B	ASSY P/MATERIAL;UF9000,55	1	SNA
.2		6902-000379	BAG AIR;LDPE,T0.2,W1000,L1800,TRP,1260.0	1	SNA
.2		6902-001862	BAG PE;HDPE/PE FOAM,T0.015/T0.5,W200,L50	1	SNA
.2		6902-001957	BAG ROLL;HDPE/PE FOAM,HDPE T0.018mm,T0.2	3	SNA
.2		6922-000003	BAND PP;PP,T0.8,W18,L1650M,TRP,DA69-9014	1	SNA
.2	T0214	AA61-20285C	HOLDER-BOX;CORAL,PP,BLACK,HB,17.5g	4	SNA
.2		BN02-00102B	TAPE FILAMENT;UE7000,#893,0.15,25,50,WHI	1	SNA

Exploded Views and Parts List

Level	Loc.	Part Code	Description & Specification	Qty.	SA/SNA
.2		BN68-02422B	LABEL-WARNING SHIPPING;ALL MODEL,A/P 100	1	SNA
.2		BN69-03982M	PAD PACKING-EDGE;EDGE,PAPER,-,T5,W120,L2	1	SNA
.2		BN69-05418A	PACKING-BAG WRAPPING;- ,LDPE,-,0,019,500,	4	SNA
.2		BN69-06640D	PACKING-TRUCK PAD;TRUCK PAD,PAPER,-,-,DW	1	SNA
.2		BN69-06642A	PACKING-PAD;PAD,PAPER,-,-,CB-SW4,1300,10	1	SNA
.2		BN69-09124A	PAD-EPE;85S9-JACK-PACK,EPE,W130,D60,H66,	2	SNA
.2		BN69-09258A	CUSHION-SET;55UF9000,EPS,16.7g/L,W/W	1	SNA
..3		0103-005099	RESIN-EPS;BASF303,Natural,Natural	1001	SNA
.2		BN69-09347E	PALLET;55" F9000,WOOD,20mm,1090,1460,140	1	SNA
.2		BN69-09395A	BOX-ACCESSORY;55/65 F9000,CB,SW, E Flute	1	SNA
.2		BN74-00008D	TAPE-OPP MASKING;OPP,T0.05,W75,L800M,CLR	2	SNA
1	ACCE1	BN92-13415L	ASSY ACCESSORY;UF9Y	1	SNA
.2		BN68-05417A	LABEL-STICKER;ALL,EDC,Polypropylene,T0.1	1	SNA
.2		BN96-29495K	ASSY ACCESSORY MANUAL/CABLE;UE55F9000SLX	1	SNA
..3	T0268	3903-000525	CBF-POWER CORD;DT,CEE,LP-21L,250V,2.5A,B	1	SA
..3		4301-000103	BATTERY-ALKALINE;1.5V,750mAH,LR03,10.2x4	4	SNA
..3	REMO3	AA59-00759A	REMOCON-SMART TOUCH CONTROL;TM1390,14,80	1	SA
..3	REMO2	AA59-00786A	REMOCON;TM1240,45,3.0V,F6800, F6700, EU	1	SA
..3	EC03	BN39-01154A	CBF SIGNAL;Chelsea Slim,24P/20P,30AWG,20	1	SA
..3	EC08	BN39-01154C	CBF SIGNAL;Chelsea Slim, STEREO Plug to	1	SA
..3	EC07	BN39-01154H	CBF SIGNAL;UE40B7000WWXXC,3P RCA,30AWG,1	1	SA
..3		BN61-08951A	HOLDER-WIRE;UF8000 55",Nylon66,NC (BLK),	1	SNA
..3		BN68-00514K	MANUAL FLYER-03,WARRANTY CARD;comm,Samsu	1	SNA
..3		BN68-04711A	LEAFLET-3D GLASS;SSG-5100GB,ENG,W/W,SMAR	1	SNA
..3		BN68-04735A	LABEL-E,PASS;ALL MODEL,ART PAPER 90G,50,	1	SNA
..3		BN68-04972A	MANUAL FLYER-03,REGULATORY GUI;ALL,SAMSU	1	SNA
..3		BN68-05115X	LEAFLET-01,FICHE;S9,EUROPE,W/P80G,ISO B5	1	SNA
..3		BN68-05462A	MANUAL USERS;UF9000,ENG/FRA/SPA/POR,XC,W	1	SNA
..3		BN69-08751D	WRAP VINYL-SHRINK;ACCESSORY BOX,PLASTIC	0	SNA
..3		BN69-09209A	BOX-01,ACCESSORY;F8000_ACCESSORY,CB,NONS	1	SNA
..3		BN69-09210A	PAD-TYPE;F8000_ACCESSORY,CB,W461,L327,CB	1	SNA
..3		BN69-09213A	PAD-TYPE;F8000_ACCESSORY,PAPER,W366,L212	1	SNA
..3	FLIB	BN96-26652A	ASSY CABLE P;IR BLASTER,IR BLASTER CABL,	1	SA
..3	3DGLA	BN96-27418A	ASSY ACCESSORY 3D GLASSES;SSG-5100GB,3D	2	SC
1		BN92-13416S	ASSY LABEL;UF9Y	1	SNA
.2		0203-001598	TAPE-FILAMENT;#8915,0.15,12,55000,CLR	0	SNA
.2		BN68-05050A	LABEL RATING;ALL,SS,PE,T0.05,93,73,Dark	1	SNA
.2		BN68-05118W	LEAFLET-QSG;UF9000,EU N.AFRICA,ART 100G,	1	SNA