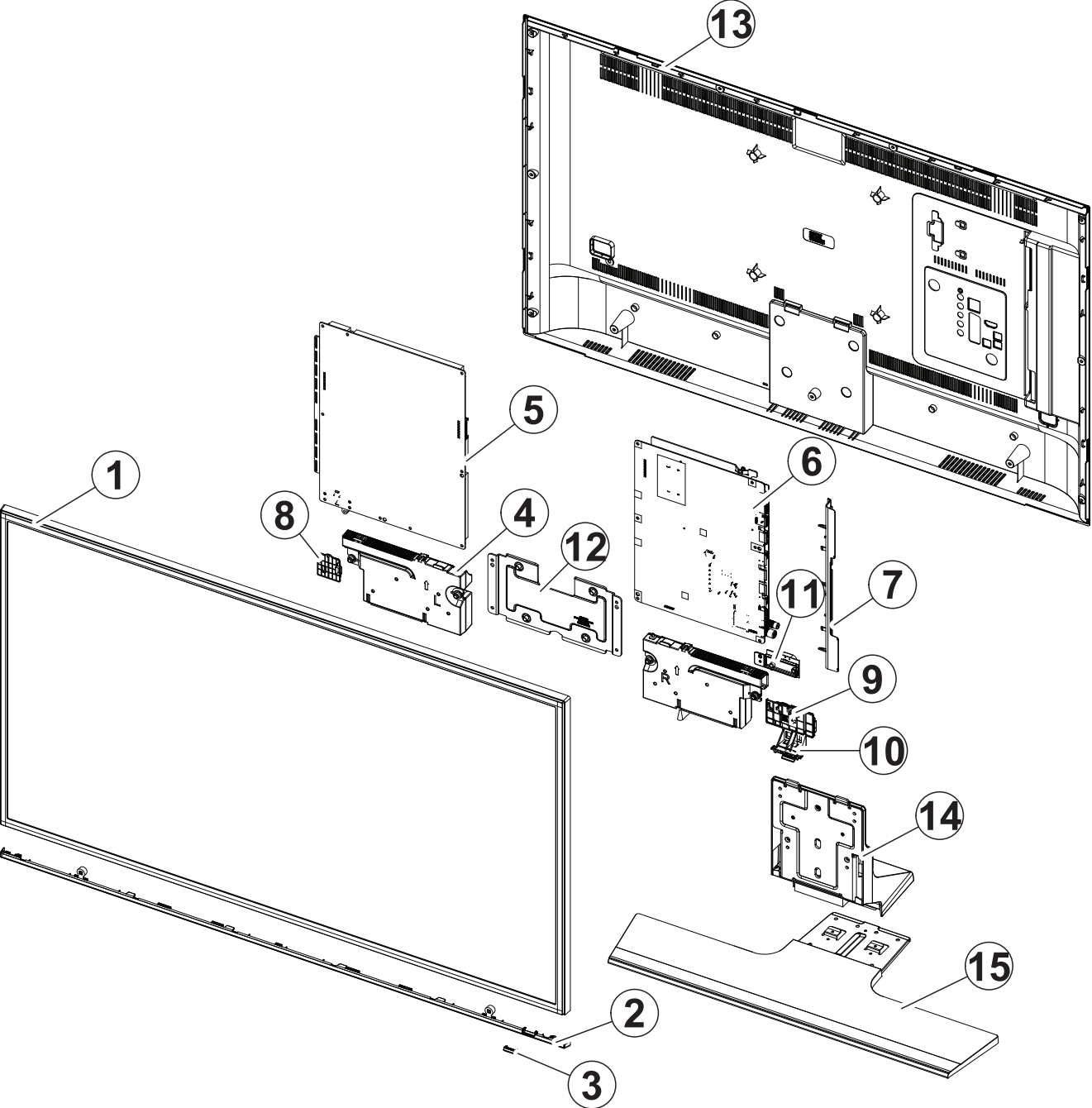


1. Exploded View & Part List

Exploded View



Parts List

No.	Lvl.	Loc.	Material Code	Description & Specification	SNA	Qty.
1	2	PANEL	BN95-01608D	PRODUCT LCD-AMLCD; LSF400FM01-G,CY-GH040H	SA	1
2	2	CD01A	BN95-01710A	ASSY DECORATION SMT; HU7000,40,LIGHT TITA	SA	1
3	3		BN63-12221A	COVER-IR; HU7000,PC	SA	1
4	2	SP01A	BN96-31842A	ASSY SPEAKER P; 6ohm,10W,Enclosure_UH7k	SA	1
5	2	P001A	BN44-00752A	DC VSS-UHD PD BD; L40N4_ESM,L40N4_ESM,AC/	SA	1
6	2	M0014	BN94-07578A	ASSY PCB MAIN; UH7R	SA	1
7	3		BN61-10796A	HOLDER-SIDE AV; U7000,HIPS	SNA	1
8	2	BT	BN96-30218A	ASSY BOARD P-RF-MODULE; Bluetooth Module,	SA	1
9	2	WIFI	BN59-01174A	NETWORK-WIFI MODULE; WIDT-30Q,Internal Wi	SA	1
10	2	IR	BN96-32173A	ASSY BOARD P-UHD7K IR FUNCTION; UHD_NT14U	SA	1
11	2	JOG	BN96-32172A	ASSY BOARD P-UHD7K SW FUNCTION; UHD_NT14U	SA	1
12	2	SB05A	BN96-32406A	ASSY BRACKET P-STAND LINK; 40, 50HU7000,H	SNA	1
13	2	R001A	BN96-32316A	ASSY COVER P-REAR; 40HU7000,MPPE V1,BLACK	SA	1
14	2		BN96-32240C	ASSY STAND P-NECK; HU7000,50,ZN,PC+ABS,BL	SA	1
15	2	SB04A	BN96-32237A	ASSY STAND P-BASE; 40HU7000,PC+ABS,BLACK	SA	1

2. Electrical Parts List

Level	Loc.	Part Code	Description & Specification	Qty.	SA/SNA
			UE40HU6900SXZF (TS01)		
1		BN90-05364A	ASSY W/I;HC7000	1	SNA
.2		BN81-08159Z	PART SET-ELEC W/I;UF4~UF8,UH4~UH9 ELEC	1	SNA
.2		BN81-09498R	PART SET-MECH W/I;UH7R,U40HR*	1	SNA
1	S001A	BN90-05377C	ASSY STAND;HU6900	1	SNA
.2	SB04A	BN96-32237A	ASSY STAND P-BASE;40HU7000,PC+ABS,BLACK	1	SA
..3	SCREW	6003-000131	SCREW-TAPTYPE;BH,+,S,M4,L6,ZPC(BLK),SWRC	3	SNA
..3	SCREW	6003-001010	SCREW-TAPTYPE;FH,+,B,M3,L6,ZPC(WHT),SWRC	4	SA
..3		6902-002088	BAG PE;HDPE/PE FOAM,T0.015/T0.5,W700,L20	1	SNA
..3		6902-002092	BAG PE;HDPE/PE FOAM,T0.015/T0.5,W180,L16	1	SNA
..3		BN01-00179A	COMPOSITE PANEL;HU7000,COMPOUND PANEL,T5	1	SNA
..3		BN61-04692A	BOSS-PRIMER;#94,SHEET,clear,35cps	0	SNA
..3		BN61-10592A	BRACKET-BOTTOM LINK;HU7000,HGI,T1.0	1	SNA
..3		BN63-12222A	COVER-STAND BOTTOM;HU7000,ABS+PC,39.5, 4	1	SNA
..3		BN64-02669A	BADGE-INLET;HU8500,Ni,0.05,black chrome,	1	SNA
..3	M0019	BN73-00052C	RUBBER-FOOT;LCD TV,Silicone RUBBER,T2.0	7	SNA
..3		BN96-32746B	ASSY ACCESSORY-SCREW;HU7000 ,40,6001-001	1	SNA
...4		6001-001961	SCREW-MACHINE;FH,+,M4,L12,ZPC(BLK),SWRCH	6	SA
.2		BN96-32240C	ASSY STAND P-NECK;HU7000,50,ZN,PC+ABS,BL	1	SA
..3	SCREW	6003-001208	SCREW-TAPTYPE;BH,+,S,M4,L12,ZPC(BLK),SWR	1	SA
..3	SCREW	6003-001785	SCREW-TAPTYPE;FH,+,B,M4,L8,ZPC(BLK),SWRC	2	SA
..3	SCREW	6003-001819	SCREW-TAPTYPE;CH,B,M3,L6,ZPC(BLK),SWRCH1	1	SA
..3		6902-002059	BAG PE;HDPE/PE FOAM,T0.015/T0.5,W300,L40	1	SNA
..3	AH089	BN61-10505A	HOLDER-CABLE;HU8500,ABS,HB	1	SNA
...4		0103-004609	RESIN-ABS;HF-0680U,K21294,BK0007,1.5mm H	17	SNA
..3		BN61-10591A	BRACKET-NECK;HU7000,HGI,T3.0	1	SNA
..3		BN63-12050B	COVER-NECK-FRONT;HU8500,ABS+PC,BLK,50-55	1	SNA
..3		BN63-12220B	COVER-STAND REAR;HU7000,ABS+PC	1	SNA
...4		0103-005041	RESIN PC ABS;FR3200TV,901408,BK0008,1.2m	165	SNA
...4		BN68-00513D	LABEL-RESIN;resin,-,art paper,-,10,25,-,	1	SNA
..3		BN68-05603A	LABEL-E,PASS;ALL MODEL,ART PAPER 90G,60,	1	SNA
..3		BN96-32746A	ASSY ACCESSORY-SCREW;HU7000,6003-001208	1	SNA
...4	SCREW	6003-001208	SCREW-TAPTYPE;BH,+,S,M4,L12,ZPC(BLK),SWR	4	SA
...4		6902-000341	BAG PE;LDPE,T0.05,L90,W70,TRP,,,PE MARK	1	SNA
1	R001A	BN90-05393A	ASSY COVER REAR;HC7000	1	SNA
.2	SCREW	6001-003074	SCREW-MACHINE;BH,+,M3,L6,ZPC(BLK),SWRCH1	11	SA
.2	SCREW	6003-001782	SCREW-TAPTYPE;BH,+,B,M4,L12,ZPC(BLK),SWR	2	SA
.2	R001A	BN96-32316A	ASSY COVER P-REAR;40HU7000,MPPE V1,BLACK	1	SA

Exploded Views and Parts List

Level	Loc.	Part Code	Description & Specification	Qty.	SA/SNA
...3	R001	BN63-12212A	COVER-REAR;40HU7000,MPPE,V1,BLK	1	SNA
...4		0103-009565	RESIN-MPPE;ST85HF,1D129A,BK0020,V-1	1.	1500
...3	T0071	BN64-02689B	INLAY-TERMINAL;HU7000,PC,T0.3,W128.1,L14	1	SNA
...3		BN68-03518F	LABEL-STICKER-CI SLOT;WW,ALL,PET,0.1,134	1	SNA
...3		BN68-05825H	LABEL-TERMINAL SIDE;HU7000,PET,T0.125,W1	1	SNA
1		BN91-12794E	ASSY LCM-AMLCD;BN95-01608D,CY-GH040HGLV4	1	SNA
.2	PANEL	BN95-01608D	PRODUCT LCD-AMLCD;LSF400FM01-G,CY-GH040H	1	SA
...3	SCREW	6001-003075	SCREW-MACHINE;BH,+,M3,L4,ZPC(WHT),SWRCH1	10	SA
...3	SCREW	6001-003083	SCREW-MACHINE;CH,+,M3,L8,ZPC(BLK),SWRCH1	3	SA
...3		BN68-05722A	LABEL-STICKER;ALL MODEL,POLYPROPYLENE,0.	1	SNA
...3		BN90-05882A	ASSY MISC-BLU;UH7K 40,CY-GH040HGLV1V	1	SNA
...4		BN61-10113A	SUPPORT-PLATE;Y14 F-LED,PC,V2,CLEAR,OD-1	8	SNA
...4		BN61-10233A	LGP-DIFFUSERS PLATE;40inch Diffuser Plat	1	SNA
...4		BN63-12182A	SHEET-DBEF;LFD 40inch, DLF250,PET,0.25,8	1	SNA
...4		BN63-12495A	SHEET-PRISM;MAS670F,PET*,0.25,894,513.4,	1	SNA
...4		BN63-12496A	SHEET-REFLECTOR;SY95S,PET*,0.18,886.78,5	1	SNA
...4		BN96-32174A	ASSY LED BAR P-LED BAR;U7K 40" SDC_L,FC	6	SNA
...4		BN96-32175A	ASSY LED BAR P-LED BAR;U7K 40" SDC_R,FC	6	SNA
...4		BN96-32271A	ASSY CHASSIS BOTTOM P;UHD 40",BN64-02665	1	SNA
....5		BN02-00040C	TAPE DOUBLE FACE-D-PLATE;F-LED ALL,MKT50	2	SNA
....5		BN02-00094A	TAPE PET;Y12 F-LED,MT-PFR,T 0.05,W30,L40	16	SNA
....5		BN02-00173B	TAPE ETC-CORNER;Y13 SNB F8K,PET,0.05,15,	4	SNA
....5		BN61-10207A	HOLDER-WALL RIVET;Y14 F-LED 32",SWRCH10A	4	SNA
....5		BN61-10584A	HOLDER-MIDDLE(LR);Y14 F-LED 40" (UHD),PC	2	SNA
....5		BN61-10585A	HOLDER-MIDDLE U;Y14 F-LED 40" (UHD),PC+G	1	SNA
....5		BN61-10636A	HOLDER-MIDDLE D;Y14 F-LED 40" (UHD),PC+G	1	SNA
....5		BN62-00602B	INSULATION-PD BOARD UHD;Y14 UHD 40",PC-(1	SNA
....5	T0073	BN63-03871A	GASKET-EMI;58P9,Fabric,2,15,11	4	SNA
....5	CC02	BN64-02665A	CHASSIS-BOTTOM;Y14 F-LED 40" (UHD),EGI-S	1	SNA
....5		BN96-32208A	ASSY BOARD P-LED INTERFACE B'D;U7K 40inc	1	SNA
...4		BN96-32276A	ASSY FRAME P-MOLD MIDDLE;Y14 UHD 40",PC+	1	SNA
....5		BN60-00735M	SPACER-MIDDLE;Y14 VNB 32,PET,L380,NTR,T0	1	SNA
....5		BN60-00735N	SPACER-MIDDLE;Y14 VNB 40,PET,L470,NTR,T0	1	SNA
....5		BN60-00744C	SPACER-RUBBER;Y14 SF-LED VNB,SH-0140U+AT	1	SNA
....5		BN60-00815B	SPACER-PANEL (UD);14 SF-LED 40,SILICON+T	2	SNA
....5		BN60-00815C	SPACER-PANEL (LR);14 SF-LED 40,SILICON+T	2	SNA
....5		BN61-10587A	FRAME-MOLD MIDDLE;Y14 F-LED 40" (UHD),PC	1	SNA
...3	TC01A	BN96-32262A	ASSY CHASSIS TOP P;UHD 40" 7K,BN64-02666	1	SNA
...4		BN60-00715G	SPACER-TOP,CORNER;Y14 Slim UHD,GASKET,L2	3	SNA
...4		BN60-00930E	SPACER-TOP(UD);Y14 VNB 40",GASKET+PET,L8	2	SNA

Level	Loc.	Part Code	Description & Specification	Qty.	SA/SNA
...4		BN60-00930F	SPACER-TOP(LR);Y14 VNB 40",GASKET+PET,L5	2	SNA
...4		BN63-10886G	SHEET-COVER;UH7000,PET+SI,0.052,W 28mm,1	2	SNA
...4	AS080	BN63-10945C	SHEET-COVER;Y13 SF-LED,PO-SHEET,T0.068,W	1	SNA
...4		BN63-12632B	COVER-HOT-STAMPING(FOIL);HU7000,PET,25um	3	SNA
...4		BN64-02130H	BADGE-BRAND;F9K,Ni,0.05,30.0,SILVER,HAIR	1	SNA
...4	AC157	BN64-02666A	CHASSIS-TOP;Y14 F-LED 40" (UHD),PC+ABS+G	1	SNA
..3	FL06	BN96-32657C	ASSY CABLE P-FFC;HU6000,FFC,NH,55mm 1,9	2	SNA
..3		BN96-32966A	ASSY COVER P-SOURCE PCB;Y14 UH7K 40",BN6	2	SNA
...4		BN60-00554A	SPACER-SOURCE;SNB 40/46/55,Silicone-Rubb	8	SNA
...4		BN63-12229A	COVER-SOURCE PCB(LR);Y14 F-LED 40" (UHD)	2	SNA
..3		BN96-33086A	ASSY OPEN CELL;LSF400FP02-G,8bit,40INCH,	1	SNA
..3	TCON	BN96-33089A	ASSY T CON P;LMF400FP02-G,PCB-CONTROL,8b	1	SA
1		BN91-12854A	ASSY SHIELD;UH7R	1	SNA
.2	SCREW	6001-003016	SCREW-MACHINE;PWH,+,M3.0,L5.0,ZPC(WHT),S	5	SA
.2	SCREW	6001-003081	SCREW-MACHINE;PWH,+,M3,L5,ZPC(WHT),SWRCH	13	SA
.2		AA63-01335A	GASKET;Twister,Conductive Fabric,0.1mm,2	1	SNA
.2	EC13	BN39-01773T	LEAD CONNECTOR;S9 110",Lead Connector,UL	1	SA
.2	EC13	BN39-01884C	LEAD CONNECTOR;UN28H4200AF,Lead Connecto	1	SA
.2	M-F	BN39-01891L	LEAD CONNECTOR-FUNCTION;HU7000,Lead Conn	1	SA
.2	P001A	BN44-00752A	DC VSS-UHD PD BD;L40N4_ESM,L40N4_ESM,AC/	1	SA
.2	WIFI	BN59-01174A	NETWORK-WIFI MODULE;WIDT-30Q,Internal Wi	1	SA
.2	HOLDER SCREW	BN61-09175B	HOLDER-LED SCREW;UD 110,SWRCH18A,10,3,BH	2	SA
.2		BN61-10164A	HOLDER-B/T;UH5000 40",ABS,HB,BT	1	SNA
.2		BN62-00460A	PAD GAP;KN55S9CAF,Silicone,40x40mm,6.0	1	SA
.2	T0073	BN63-03871A	GASKET-EMI;58P9,Fabric,2,15,11	2	SNA
.2	CD01A	BN95-01710A	ASSY DECORATION SMT;HU7000,40,LIGHT TITA	1	SA
..3		0203-001269	TAPE-OPP MASKING;#301,T0.06,W75,L50000,N	0	SNA
..3		BN01-00160A	TARGET-CHROMIUM-CY;Chromium target,99.95	1	SNA
..3		BN01-00161A	TARGET-CHROMIUM-PL;chromium target,over	1	SNA
..3		BN01-00168A	COATING-AFS;99.5% AFS,99.50%,1.5,AF Sput	2	SNA
..3	FD01	BN63-12216A	COVER-DECORATION;HU7000,PC+ABS+G/F15%,40	1	SNA
...4		0103-010275	RESIN PC ABS;235GNH15/6919H,Black,BK0007	55	SNA
..3		BN63-12221A	COVER-IR;HU7000,PC	1	SA
...4		0103-007463	RESIN-PC;SC-1200R,LDW51,TP0023,0.8 V-2	0	SNA
..3		BN69-10522C	PACKING-TRAY;TRAY 40",PAPER,-,-,30,535,9	1	SNA
..3		BN69-10523D	BOX-SMT;40" SMT DECORATION,PAPER,-,-,330	1	SNA
.2	BT	BN96-30218A	ASSY BOARD P-RF-MODULE;Bluetooth Module,	1	SA
.2	SP01A	BN96-31842A	ASSY SPEAKER P;6ohm,10W,Enclosure_UH7k	1	SA
.2	FL06	BN96-32005W	ASSY CABLE P-FFC;UA40HU6000,FFC,NH,300mm	1	SA
.2	JOG	BN96-32172A	ASSY BOARD P-UHD7K SW FUNCTION;UHD_NT14U	1	SA

Exploded Views and Parts List

Level	Loc.	Part Code	Description & Specification	Qty.	SA/SNA
.2	IR	BN96-32173A	ASSY BOARD P-UHD7K IR FUNCTION;UHD_NT14U	1	SA
.2	SB05A	BN96-32406A	ASSY BRACKET P-STAND LINK;40, 50HU7000,H	1	SNA
...3	M0131	AA63-01296A	GASKET;FIRENZE,Conductive Fabric,12mm,10	2	SNA
...3	CB18	BN61-10596A	BRACKET-STAND LINK;HU7000,EGI-SECC,T2.0	1	SNA
...4		BN61-09605A	BRACKET-STOPPER NUT;LED TV F6100,Others	4	SNA
1	M0017	BN91-12860A	ASSY CHASSIS;UH7R	1	SNA
.2	M0014	BN94-07578A	ASSY PCB MAIN;UH7R	1	SA
...3		BN61-10796A	HOLDER-SIDE AV;U7000,HIPS	1	SNA
...4		0103-004628	RESIN-HIPS;HF-1690H,K2901,BK0020,1.5mm H	15	SNA
...3		BN62-00365A	HEAT SINK-PS;UN46ESF8000AF,A1050,ANODIZI	1	SNA
...3	AH020	BN62-00625A	HEAT SINK;UN50HU7000FXZA,A1050,BLACK,SJT	1	SNA
...3		BN97-08123A	ASSY SMD;UH7S,BN94-07345A	1	SNA
...4		0202-001899	SOLDER-CREAM;M705-GRN360-K2-VT,25-36um,S	7	SNA
...4	DS01A	0401-001056	DIODE-SWITCHING;MMBD4148SE,100V,200mA,SO	1	SA
...4	DR01A	0402-001614	DIODE-RECTIFIER;S1G,400V,1A,DO-214AC,TP	1	SA
...4		0403-001783	DIODE-ZENER;BZB84-C6V2,5.8/6.6V,300mW,SO	3	SNA
...4		0404-001404	DIODE-SCHOTTKY;BAT721C,40V,200mA,SOT-23,	7	SA
...4		0404-001881	DIODE-SCHOTTKY;SS3040-HE,40V,3000mA,SOD-	3	SA
...4		0406-001200	DIODE-TVS;RCLAMP0504F,6/-/-V,150W,SC-70	2	SA
...4		0406-001290	DIODE-TVS;3.0SMCJ20A,22.2/-/24.5V,3000W,	1	SNA
...4		0406-001573	DIODE-TVS;AOZ8806DI-05,6	1	SA
...4		0406-001628	DIODE-TVS;AOZ8804ADI,6/-/-V,150W,SLP2510	1	SA
...4		0406-001635	DIODE-TVS;SMF5.0A,6.4V, 6.7V, 7V,200W,SM	24	SA
...4		0501-000279	TR-SMALL SIGNAL;KSA1182-Y,PNP,150mW,SOT-	3	SA
...4		0501-000445	TR-SMALL SIGNAL;KTC3875S-Y,NPN,150mW,SOT	4	SC
...4		0504-000126	TR-DIGITAL;KSR1101,NPN,200mW,4.7K/4.7Koh	2	SA
...4		0505-001844	FET-SILICON;SI4435DDY-T1-GE3,P,-30V,-11.	2	SA
...4		0505-002598	FET-SILICON;AP2317GN,P,-20V,-4.2A,0.052o	1	SA
...4		0505-003397	FET-SILICON;2N7002K,N,60V,380mA,1.19ohm,	10	SA
...4	EL02	0601-002037	LED;SMD(TOP VIEW),BLUE,1.6x0.8mm,465/470	1	SA
...4		0801-003330	IC-CMOS LOGIC;Octal buffer,DQFN,20P,4.5x	5	SA
...4		0904-002859	IC-USC;GL852G-32,QFN,28P,5x5mm,12MHz,TP,	1	SA
...4		1001-001545	IC-ANALOG MULTIPLEX;TS3USB221ERSER,R-PQF	3	SA
...4		1001-001686	IC-ANALOG MULTIPLEX;74LV4052,CMOS,TTSOP,	1	SA
...4		1001-001689	IC-ANALOG SWITCH;TSA23159RSER,QFN,10P,2	3	SA
...4		1001-001828	IC-ANALOG SWITCH;TS3V330PWR,TSSOP,16P,6.	1	SA
...4		1001-001860	IC-ANALOG SWITCH;NX5L2750CGU,QFN,10P,1.4	1	SNA
...4		1001-001885	IC-VIDEO SWITCH;SII9679,QFN,76P,9x9mm,PL	1	SA
...4		1001-001886	IC-VIDEO SWITCH;QFP,144P,22*22,PLASTIC,T	1	SA
...4		1006-001509	IC-DRIVER/RECEIVER;MAX3222ECPWR,TSSOP,20	1	SA

Level	Loc.	Part Code	Description & Specification	Qty.	SA/SNA
...4		1103-001564	IC-EEPROM;S-24C512CI-J800,512Kbit,64Kx8,	1	SA
...4		1105-002227	IC-DDR3 SDRAM;K4B1G1646G-BCK0,DDR3 SDRAM	2	SA
...4		1105-002529	IC-DDR3 SDRAM;K4B4G1646D-BCK0,DDR3 1600,	4	SA
...4		1201-003183	IC-AUDIO AMP;DRV612,HTSSOP,14P,5x4.4mm,D	1	SA
...4		1201-003690	IC-AUDIO AMP;TAS5747PHPR,QFP,48P,DUAL,PL	1	SA
...4		1203-004363	IC-VOL. DETECTOR;SOT-23,3Z30,2.9x1.6mm,P	1	SA
...4		1203-006109	IC-POSI.FIXED REG.;S-1206B33-M3T1G,SOT-2	1	SA
...4		1203-006118	IC-POSI.FIXED REG.;S-1172B18-U5T1G,SOT-8	1	SA
...4		1203-006130	IC-POSI.FIXED REG.;S-1172B25-U5T1G,SOT-8	1	SA
...4		1203-006330	IC-POWER SUPERVISOR;TPS2065DBV,SOT-23,5P	1	SA
...4		1203-006341	IC-DC/DC CONVERTER;TPS63020,SON-14,14P,4	1	SA
...4		1203-007018	IC-DC/DC CONVERTER;TPS54821RHL,QFN,14P,3	1	SA
...4		1203-007238	IC-PWM CONTROLLER;TPS54427,DDA,8P,4.8x3.	5	SNA
...4		1203-007242	IC-POSI.ADJUST REG.;G2992BP11U,SOP-8,8P,	2	SA
...4		1203-007665	IC-DC/DC CONVERTER;RT7266ZSP,SOP-8,8Z30,	3	SNA
...4		1203-007695	IC-DC/DC CONVERTER;AOZ3018,SO-8,8Z30,4.9	1	SNA
...4		1203-007697	IC-DC/DC CONVERTER;LNBH26SPQR,QFN,24Z30,	1	SNA
...4		1203-007728	IC-VOL. DETECTOR;RT9831GQW,QW : WQFN-20L	1	SA
...4		1203-007755	IC-DC/DC CONVERTER;TPS65253RHD,VQFN,28P,	2	SA
...4		1203-007757	IC-POSI.ADJUST REG.;TPS7A7001DDAR,SOIC-8	1	SA
...4		1203-007984	IC-DC/DC CONVERTER;AOZ3015PI,SO-8,8P,6.2	1	SA
...4		1203-008023	IC-POSI.ADJUST REG.;AOZ2003PI,SO-8,8P,4.	1	SNA
...4		1203-008104	IC-POSI.FIXED REG.;S-13A1D18-E8001,HSOP,	2	SNA
...4		1203-008118	IC-DC/DC CONVERTER;AOZ3013PI,SO-8,8P,4.9	2	SNA
...4		1204-003489	IC-VIDEO PROCESS;SDP1301,FCBGA,680P,25x2	1	SA
...4		1204-003514	IC-VIDEO PROCESS;SENK16,HS-PBGA,1135P,35	1	SNA
...4		1204-003530	IC-VIDEO PROCESS;SENK84,HS-TFBGA,578P,21	1	SA
...4	IC	1205-004385	IC-ETHERNET CONTROLLER;RTL8201F-VB-CGT,Q	1	SA
...4		1205-004447	IC-SWITCH;TPS2051CDBVR,SOT23-5,5P,3x1.65	1	SA
...4		1205-004855	IC-SWITCH;TPS25910RSAR,QFN,16P,4x4x0.8mm	1	SA
...4		1205-004983	IC-SWITCH;BD82032FVJ,TSSOP-B8J,8P,3.0x4.	3	SA
...4		1405-001271	VARISTOR;35V,20Vdc,5A,1.0x0.5x0.6mm,TP,1	25	SA
...4		2007-000057	R-CHIP;40.2Kohm,1%,1/10W,TP,1608	2	SA
...4		2007-000063	R-CHIP;150Kohm,1%,1/10W,TP,1608	1	SA
...4		2007-000157	R-CHIP;47Kohm,5%,1/16W,TP,1005	17	SNA
...4		2007-000172	R-CHIP;10ohm,5%,1/16W,TP,1005	5	SNA
...4		2007-000173	R-CHIP;22ohm,5%,1/16W,TP,1005	62	SNA
...4		2007-000174	R-CHIP;47ohm,5%,1/16W,TP,1005	2	SNA
...4		2007-000512	R-CHIP;2.4Kohm,5%,1/10W,TP,1608	2	SNA
...4		2007-000614	R-CHIP;24Kohm,1%,1/10W,TP,1608	6	SNA

Exploded Views and Parts List

Level	Loc.	Part Code	Description & Specification	Qty.	SA/SNA
...4		2007-000772	R-CHIP;33Kohm,1%,1/10W,TP,1608	3	SA
...4		2007-000816	R-CHIP;390Kohm,1%,1/10W,TP,1608	3	SNA
...4		2007-000828	R-CHIP;39Kohm,1%,1/10W,TP,1608	3	SA
...4		2007-000932	R-CHIP;470ohm,5%,1/16W,TP,1005	8	SNA
...4		2007-001116	R-CHIP;680ohm,1%,1/10W,TP,1608	2	SA
...4		2007-001125	R-CHIP;68Kohm,1%,1/10W,TP,1608	2	SA
...4		2007-001168	R-CHIP;75ohm,5%,1/4W,TP,3216	1	SA
...4		2007-001288	R-CHIP;18ohm,5%,1/16W,TP,1005	4	SA
...4		2007-001298	R-CHIP;51ohm,5%,1/16W,TP,1005	2	SNA
...4		2007-001320	R-CHIP;1.8Kohm,5%,1/16W,TP,1005	4	SA
...4		2007-002796	R-CHIP;510ohm,5%,1/16W,TP,1005	2	SA
...4		2007-003015	R-CHIP;2.2ohm,5%,1/16W,TP,1005	8	SNA
...4		2007-003018	R-CHIP;43ohm,5%,1/16W,TP,1005	1	SA
...4		2007-003022	R-CHIP;62ohm,5%,1/16W,TP,1005	50	SNA
...4		2007-007001	R-CHIP;3.9Kohm,5%,1/16W,TP,1005	2	SA
...4		2007-007095	R-CHIP;390ohm,5%,1/16W,TP,1005	2	SA
...4		2007-007107	R-CHIP;100Kohm,1%,1/16W,TP,1005	23	SNA
...4		2007-007132	R-CHIP;15Kohm,1%,1/16W,TP,1005	2	SA
...4		2007-007133	R-CHIP;300ohm,1%,1/16W,TP,1005	4	SA
...4		2007-007136	R-CHIP;4.7Kohm,1%,1/16W,TP,1005	85	SNA
...4		2007-007137	R-CHIP;1.2Kohm,1%,1/16W,TP,1005	3	SA
...4		2007-007138	R-CHIP;27Kohm,1%,1/16W,TP,1005	4	SNA
...4		2007-007142	R-CHIP;10Kohm,1%,1/16W,TP,1005	60	SNA
...4		2007-007156	R-CHIP;1ohm,5%,1/16W,TP,1005	3	SNA
...4		2007-007306	R-CHIP;100ohm,1%,1/16W,TP,1005	50	SNA
...4		2007-007309	R-CHIP;12Kohm,1%,1/16W,TP,1005,0.35	9	SA
...4		2007-007311	R-CHIP;22Kohm,1%,1/16W,TP,1005	12	SA
...4		2007-007312	R-CHIP;20Kohm,1%,1/16W,TP,1005	3	SA
...4		2007-007313	R-CHIP;6.8Kohm,1%,1/16W,TP,1005	3	SA
...4		2007-007314	R-CHIP;5.6Kohm,1%,1/16W,TP,1005	2	SA
...4		2007-007317	R-CHIP;2.2Kohm,1%,1/16W,TP,1005	9	SA
...4		2007-007318	R-CHIP;1Kohm,1%,1/16W,TP,1005	49	SNA
...4		2007-007470	R-CHIP;7.5Kohm,1%,1/16W,TP,1005	2	SNA
...4		2007-007517	R-CHIP;240ohm,1%,1/16W,TP,1005	6	SNA
...4		2007-007528	R-CHIP;1.5Kohm,1%,1/16W,TP,1005	4	SA
...4		2007-007538	R-CHIP;56Kohm,1%,1/16W,TP,1005	3	SA
...4		2007-007617	R-CHIP;2.49Kohm,1%,1/10W,TP,1608	3	SA
...4		2007-007627	R-CHIP;16Kohm,1%,1/16W,TP,1005	3	SA
...4		2007-007668	R-CHIP;68.1Kohm,1%,1/10W,TP,1608	2	SA
...4		2007-007671	R-CHIP;11Kohm,1%,1/16W,TP,1005	5	SA

Level	Loc.	Part Code	Description & Specification	Qty.	SA/SNA
...4		2007-007698	R-CHIP;5.1Kohm,1%,1/16W,TP,1005	7	SNA
...4		2007-007720	R-CHIP;300Kohm,1%,1/10W,TP,1608	2	SA
...4		2007-007736	R-CHIP;510Kohm,1%,1/10W,TP,1608	1	SA
...4		2007-007766	R-CHIP;2Kohm,1%,1/16W,TP,1005	12	SNA
...4		2007-007797	R-CHIP;44.2ohm,1%,1/10W,TP,1608	1	SA
...4		2007-007861	R-CHIP;62Kohm,1%,1/16W,TP,1005	5	SA
...4		2007-007942	R-CHIP;1Mohm,1%,1/16W,TP,1005	5	SNA
...4		2007-008015	R-CHIP;75ohm,1%,1/16W,TP,1005	19	SNA
...4		2007-008117	R-CHIP;2.7Kohm,1%,1/16W,TP,1005	1	SA
...4		2007-008269	R-CHIP;51Kohm,1%,1/16W,TP,1005	4	SA
...4		2007-008275	R-CHIP;30Kohm,1%,1/16W,TP,1005	2	SNA
...4		2007-008294	R-CHIP;33ohm,1%,1/16W,TP,1005	22	SA
...4		2007-008298	R-CHIP;49.9ohm,1%,1/16W,TP,1005	2	SA
...4		2007-008332	R-CHIP;11.5Kohm,1%,1/16W,TP,1005	2	SA
...4		2007-008779	R-CHIP;0ohm,1%,1/16W,TP,1005	93	SA
...4		2007-009117	R-CHIP;49.9Kohm,1%,1/16W,TP,1005	1	SA
...4		2011-001261	R-NETWORK;33ohm,5%,1/16W,L,CHIP,8P,TP,2.	2	SA
...4		2011-001344	R-NETWORK;100ohm,5%,1/16W,L,CHIP,8P,TP,2	4	SA
...4		2011-001449	R-NETWORK;22ohm,5%,1/16W,L,4P,TP,1010	11	SA
...4		2011-001506	R-NETWORK;10Kohm,5%,1/16W,L,CHIP,4P,TP,1	5	SNA
...4		2011-001527	R-NETWORK;4.7Kohm,5%,1/16W,L,CHIP,4P,TP,	12	SNA
...4		2011-001587	R-NETWORK;100ohm,5%,1/16W,L,CHIP-V,4P,TP	5	SNA
...4	AD480	2203-000233	C-CER,CHIP;0.1nF,5%,50V,C0G,TP,1005	7	SA
...4	AD480	2203-000278	C-CER,CHIP;0.01nF,0.5pF,50V,C0G,TP,1005	6	SA
...4	AD480	2203-000330	C-CER,CHIP;0.012nF,5%,50V,C0G,TP,1005	11	SA
...4	AD480	2203-000359	C-CER,CHIP;0.15nF,5%,50V,C0G,TP,1005,0.5	1	SNA
...4	AD480	2203-000386	C-CER,CHIP;0.015nF,5%,50V,C0G,TP,1005	4	SA
...4	AD480	2203-000425	C-CER,CHIP;0.018nF,5%,50V,C0G,TP,1005	4	SA
...4	AD480	2203-000438	C-CER,CHIP;1nF,10%,50V,X7R,TP,1005	36	SA
...4	AD480	2203-000489	C-CER,CHIP;2.2nF,10%,50V,X7R,TP,1005	12	SA
...4	AD480	2203-000585	C-CER,CHIP;0.22nF,10%,50V,X7R,TP,1005	1	SA
...4	AD480	2203-000627	C-CER,CHIP;0.022nF,5%,50V,C0G,TP,1005	3	SNA
...4	AD480	2203-000714	C-CER,CHIP;3.3nF,10%,50V,X7R,TP,1005	5	SA
...4	AD480	2203-000812	C-CER,CHIP;0.033nF,5%,50V,C0G,TP,1005	7	SA
...4	AD480	2203-000940	C-CER,CHIP;0.47nF,10%,50V,X7R,TP,1005	9	SA
...4	AD480	2203-000975	C-CER,CHIP;47nF,10%,25V,X7R,TP,1608	6	SNA
...4	AD480	2203-001124	C-CER,CHIP;0.68nF,10%,50V,X7R,TP,1005	1	SA
...4	AD480	2203-001851	C-CER,CHIP;0.016nF,5%,50V,NP0,TP,1608	2	SNA
...4	AD480	2203-002285	C-CER,CHIP;10nF,10%,50V,X7R,TP,1005	17	SNA
...4	AD480	2203-002982	C-CER,CHIP;6.8nF,10%,50V,X7R,TP,1005	5	SA

Exploded Views and Parts List

Level	Loc.	Part Code	Description & Specification	Qty.	SA/SNA
...4	AD480	2203-003019	C-CER,CHIP;8.2nF,10%,50V,X7R,TP,1005	2	SNA
...4	AD480	2203-003039	C-CER,CHIP;0.008nF,0.25pF,50V,C0G,TP,100	2	SNA
...4	AD480	2203-005054	C-CER,CHIP;0.0047nF,0.25pF,50V,NP0,TP,10	6	SA
...4	AD480	2203-005083	C-CER,CHIP;220nF,10%,50V,X7R,TP,1608,0.8	11	SA
...4	AD480	2203-005249	C-CER,CHIP;100nF,10%,50V,X7R,TP,1608	32	SNA
...4	AD480	2203-005344	C-CER,CHIP;22nF,10%,25V,X7R,TP,1005,0.5T	14	SNA
...4	AD480	2203-005659	C-CER,CHIP;0.18nF,5%,50V,NP0,TP,1005	1	SNA
...4	AD480	2203-005968	C-CER,CHIP;4.7nF,10%,50V,X7R,TP,1005,0.5	9	SNA
...4	AD480	2203-006047	C-CER,CHIP;33nF,10%,16V,X7R,TP,1005	1	SA
...4	AD480	2203-006126	C-CER,CHIP;47nF,10%,16V,X7R,TP,1005	19	SNA
...4	AD480	2203-006158	C-CER,CHIP;100nF,10%,16V,X7R,TP,1005,0.5	421	SNA
...4	AD480	2203-006324	C-CER,CHIP;2200nF,10%,10V,X5R,TP,1608	15	SA
...4	AD480	2203-006348	C-CER,CHIP;1000nF,10%,25V,X5R,TP,1608,0.	16	SA
...4	AD480	2203-006562	C-CER,CHIP;1000nF,10%,10V,X5R,TP,1005	44	SNA
...4	AD480	2203-006818	C-CER,CHIP;47000nF,20%,6.3V,X5R,TP,3216	2	SA
...4	AD480	2203-006824	C-CER,CHIP;4700nF,10%,10V,X5R,TP,1608	12	SNA
...4	AD480	2203-006992	C-CER,CHIP;0.33nF,5%,50V,C0G,TP,1005	9	SNA
...4	AD480	2203-007240	C-CER,CHIP;22000nF,20%,6.3V,X5R,TP,1608,	60	SA
...4	AD480	2203-007269	C-CER,CHIP;22000nF,20%,10V,X5R,TP,2012,0	34	SNA
...4	AD480	2203-007270	C-CER,CHIP;10000nF,10%,10V,X5R,TP,1608,0	174	SNA
...4	AD480	2203-007306	C-CER,CHIP;10000nF,10%,25V,X5R,TP,2012,1	10	SNA
...4	AD480	2203-007401	C-CER,CHIP;10000nF,10%,50V,X5R,TP,3225	2	SA
...4	AD480	2203-008096	C-CER,CHIP;2200nF,10%,50V,X5R,TP,2012,1.	1	SA
...4		2402-001268	C-AL,SMD;100uF,20%,25V,WT,TP,8x6.3mm	2	SA
...4		2409-001118	C-POLYMER ,CHIP;47uF,20%,10V,WT,TP,3.5X2	2	SA
...4		2409-001191	C-ORGANIC,SMD;47uF,20%,20V,TP,7343(1.9T)	1	SA
...4		2703-000158	INDUCTOR-SMD;1uH,10%,2012,.40hm,50mA,45,	3	SA
...4		2703-000213	INDUCTOR-SMD;470nH,10%,1608,1.350hm,35mA	1	SA
...4		2703-000408	INDUCTOR-SMD;3.3uH,20%,3225,.28ohm,500mA	1	SA
...4		2703-001209	INDUCTOR-SMD;1.2uH,10%,1608,.80hm,25mA,3	3	SA
...4		2703-002332	INDUCTOR-SMD;330nH,5%,1608,30hm,100mA,32	1	SA
...4		2703-002834	INDUCTOR-SMD;1.8uH,20%,10x10mm,.005ohm,1	1	SA
...4		2703-003135	INDUCTOR-SMD;4.7uH,20%,6965,0.040hm,7000	5	SNA
...4		2703-003149	INDUCTOR-SMD;2.2uH,20%,5050,0.0550hm,300	2	SA
...4		2703-003263	INDUCTOR-SMD;3.3uH,20%,10.0x10.0mm,0.011	4	SNA
...4		2703-003713	INDUCTOR-SMD;1.5uH,20%,7366,0.015ohm,700	4	SA
...4		2703-003719	INDUCTOR-SMD;6.8uH,20%,10x11x3.8mm,.026o	1	SA
...4		2703-003824	INDUCTOR-SMD;3.3uH,20%,7070	1	SA
...4		2703-003937	INDUCTOR-SMD;1uH,20%,7.0x6.47x3.0mm,0.00	1	SA
...4		2703-004724	INDUCTOR-SMD;8.2uH,20%,5050,4mm,0.0720hm	4	SA

Level	Loc.	Part Code	Description & Specification	Qty.	SA/SNA
...4		2801-000102	CRYSTAL-SMD;12MHz,30ppm,12pF,100ohm,TP	3	SA
...4		2801-004814	CRYSTAL-SMD;25MHz,50ppm,8pF,100ohm,TP	2	SA
...4		2801-005291	CRYSTAL-SMD;12MHz,30ppm,4 PIN,16pF,100Oh	1	SNA
...4		2801-005324	CRYSTAL-SMD;27MHz,30ppm,Ceramic SMD(4pin	1	SA
...4		2801-005373	CRYSTAL-SMD;156.25MHz,50ppm,TP	1	SA
...4		3301-002039	BEAD-SMD;26ohm,1608,TP	119	SA
...4		3601-001374	FUSE-SURFACE MOUNT;32V,5A,FAST-ACTING,PL	3	SA
...4		3701-001856	CONNECTOR-HDMI;19P,2ROW,FEMALE,SMD-S,AU	1	SA
...4		3701-001861	CONNECTOR-HDMI;19P,2ROW,FEMALE,SMD-A,AU	3	SA
...4		3707-001104	CONNECTOR-OPTICAL;SMD-A(Ultra Slim),SPDI	1	SA
...4		3708-003073	CONNECTOR-FPC/FFC/PIC;51P,0.5mm,SMD,AU,N	1	SA
...4		3710-003901	SOCKET-INTERFACE;34P,2R,0.5mm,SMD-A,AU,B	1	SA
...4		3710-003908	CONNECTOR-SOCKET;64P,2R,0.5mm,SMD-S,AU,B	1	SA
...4	EH01	3711-008131	HEADER-BOARD TO CABLE;BOX,4P,1R,2.5mm,AN	1	SA
...4	EH01	3711-008441	HEADER-BOARD TO CABLE;BOX,24P,2R,2mm,ANG	1	SA
...4	EH01	3711-008558	HEADER-BOARD TO CABLE;BOX,26P,2R,1.25mm,	1	SA
...4		3722-003226	JACK-PHONE;7P/1C,SN,BLK	1	SA
...4		3722-003229	JACK-MODULAR;8P/8C W/L,Y,STRAIGHT,N,Au,1	1	SA
...4		3722-003457	JACK-USB;4P/1C,NI,BLK,A	2	SA
...4	JACK PIN	3722-003546	JACK-PIN;5P+Screw hole,NI+SN,G,Y/BLU/RED	1	SA
...4		3722-003617	JACK-PHONE;14P/2C,SN,BLK,STRAIGHT,3.6PI,	1	SA
...4		3722-003655	JACK-SCART;21P,SN,BLK	1	SA
...4		3722-003837	JACK-USB;9P/1C,AU/SN/NI,BLU,SMD-A,A,3.0,	1	SA
...4		6302-001290	GASKET;SMR-TS-4-4.5-3,4.0mm,Ni+Au+SUS+Mg	9	SNA
...4		BN13-00067A	PLD;MAXQ636V-2584+T,WLP,9	1	SNA
...4	ET01	BN40-00292A	TUNER;DNSS243IH286A,DNSS243IH286A,DVB-TC	1	SA
...4		BN41-02206B	PCB MAIN;UHD_NT14U,FR-4,4,1.6T,235 x 280	1	SNA
...4		BN97-08587A	ASSY MICOM-MAIN;T-NT14UDEUC-XXXX,U8JA,KL	1	SNA
....5		1107-002287	IC-EMMC;KLM4G1FEAC-C031,4GByte,BGA,153P,	1	SA
...4		BN97-08597A	ASSY MICOM-HDMI;W25Q16DVSSIG,U8JA,W25Q40	1	SNA
...4		BN97-08598A	ASSY MICOM-SUB;T-NT14UDEUS-XXXX,U8JA,W25	1	SNA
....5		1107-002226	IC-NOR FLASH;W25Q40CLSSIP,4Mbit,SOIC,8P,	1	SNA
...4		BN97-08599A	ASSY MICOM-FRC;NT72323_SPI,U8JA,W25Q16DV	1	SNA
....5		1107-002223	IC-NOR FLASH;W25Q16DVSSIG,16Mbit,2Mbitx8	1	SNA
...4		BN97-08693A	ASSY MICOM-SPI;U8JA,W25Q128FVSSIG,1107-00	1	SNA
....5		1107-002210	IC-NOR FLASH;W25Q128FVSSIG,128Mbit,128Mx1	1	SA
..3		BN97-08594A	ASSY DRM-KEY;NT14,HU7*EU	1	SNA
...4		BN46-00109H	KEY CODE-CERTIFI;MAC,TV/AV,General	1	SNA
...4		BN46-00110N	KEY CODE-CERTIFI;MIRACAST,TV,X12 /X13	1	SNA
...4		BN46-00328B	KEY CODE-CERTIFI;CI+,TV,NT14, EU	1	SNA

Exploded Views and Parts List

Level	Loc.	Part Code	Description & Specification	Qty.	SA/SNA
..3		GK63-00070A	GASKET;71TSSK 10-8-5-15,Conductive Fabri	2	SNA
1		BN92-14140A	ASSY P/MATERIAL;HC7000	1	SNA
.2		0203-001595	TAPE-OPP MASKING;OPP-2,0.075,75,800M,CLR	2	SNA
.2		6902-000379	BAG AIR;LDPE,T0.2,W1000,L1800,TRP,1260.0	1	SNA
.2		6902-001956	BAG ROLL;HDPE/PE FOAM,HDPE T0.018mm,T0.2	2	SNA
.2		6922-000003	BAND PP;PP,T0.8,W18,L1650M,TRP,DA69-9014	1	SNA
.2		BN68-02422B	LABEL-WARNING SHIPPING;ALL MODEL,A/P 100	1	SNA
.2		BN69-03982N	PAD PACKING-EDGE;EDGE,PAPER,-,T5,W120,L2	1	SNA
.2		BN69-05418A	PACKING-BAG WRAPPING;- ,LDPE,-,0,019,500,	2	SNA
.2		BN69-06640A	PACKING-PAD;PAD,PAPER,-,-,CB-SW4,1120,95	1	SNA
.2		BN69-06640E	PACKING-TRUCK PAD;TRUCK PAD,PAPER,-,-,DW	1	SNA
.2		BN69-08095K	PALLET;F68 40",WOOD,20mm,1160,1055,140,1	1	SNA
.2		BN69-09782A	CUSHION-FRONT;UH5000-40,EPS	1	SNA
.2		BN69-10165A	CUSHION-SET;40HU7000,EPS,40 inch	1	SNA
..3		0103-005099	RESIN-EPS;BASF303,Natural,Natural	502	SNA
1		BN92-14159A	ASSY BOX;HC7000	1	SNA
.2		BH68-00662A	LABEL BOX-01;ALL MODEL,ART PAPER,60,110,	1	SNA
.2		BN69-10410E	BOX-01,SET;40HU6900-TS,CB,A-01,SW3,W1031	1	SNA
1	ACCE1	BN92-15050F	ASSY ACCESSORY;HU7000	1	SNA
.2		BN68-05417A	LABEL-02,ENERGY;ALL,EDC,Polypropylene,T0	1	SNA
.2		BN96-31064A	ASSY ACCESSORY MANUAL/CABLE;HC7000	1	SNA
..3		3709-001791	CONNECTOR-CARD SLOT;64P,0.5mm,SMD-A,AU,P	1	SA
..3	T0268	3903-000849	CBF-POWER CORD;DT,CEE,LP-21L,250V,2.5A,B	1	SC
..3		4301-000101	BATTERY-ALKALINE;1.5V,1650mAH,LR6,14.5x5	2	SNA
..3		4301-000103	BATTERY-ALKALINE;1.5V,750mAH,LR03,10.2x4	2	SNA
..3		6902-001963	BAG PE;LDPE,BIOBASED,T0.05,W275,L300,TRP	1	SNA
..3	REMO2	BN59-01175N	REMOCON;TM1240A,44,3.0V,TM1240_EUROPE_S	1	SA
..3	REMO3	BN59-01185B	REMOCON-14SMART TOUCH CONTORL;TM1460_MUL	1	SA
..3	CAIR	BN96-31644A	ASSY CABLE P;IR BLASTER,UL1185 28AWG,LS0	1	SA
.2		BN96-31064J	ASSY ACCESSORY MANUAL/CABLE;HC7000	1	SNA
..3		6902-001964	BAG PE;LDPE,BIOBASED,T0.03,W200,L300,TRP	1	SNA
..3	T0527	BN68-00513A	LABEL-E,PASS;ALL MODEL,YUPO(110G),BLACK,	1	SNA
..3		BN68-00514K	MANUAL FLYER-05,WARRANTY CARD;comm,Samsu	1	SNA
..3		BN68-04972A	MANUAL FLYER-04,REGULATORY GUI;ALL,SAMSU	1	SNA
..3		BN68-05944K	LEAFLET-07,FICHE;UH8000,W/P,B5	1	SNA
..3		BN68-06101C	MANUAL USERS-01;HU6900,ENG/FRA/DEU/DUT,X	1	SNA
1		BN92-15091A	ASSY LABEL;UH7R	1	SNA
.2		0203-001598	TAPE-FILAMENT;#8915,0.15,12,55000,CLR	0	SNA
.2		BN68-05050A	LABEL RATING;ALL,SS,PE,T0.05,93,73,Dark	1	SNA
.2		BN68-06127A	LABEL-01,HIGHLIGHT POP;U8000/7000 Series	1	SNA
.2		BN68-06258A	LEAFLET-QSG;HU7000,SAMSUNG,wordless,EURO	1	SNA

