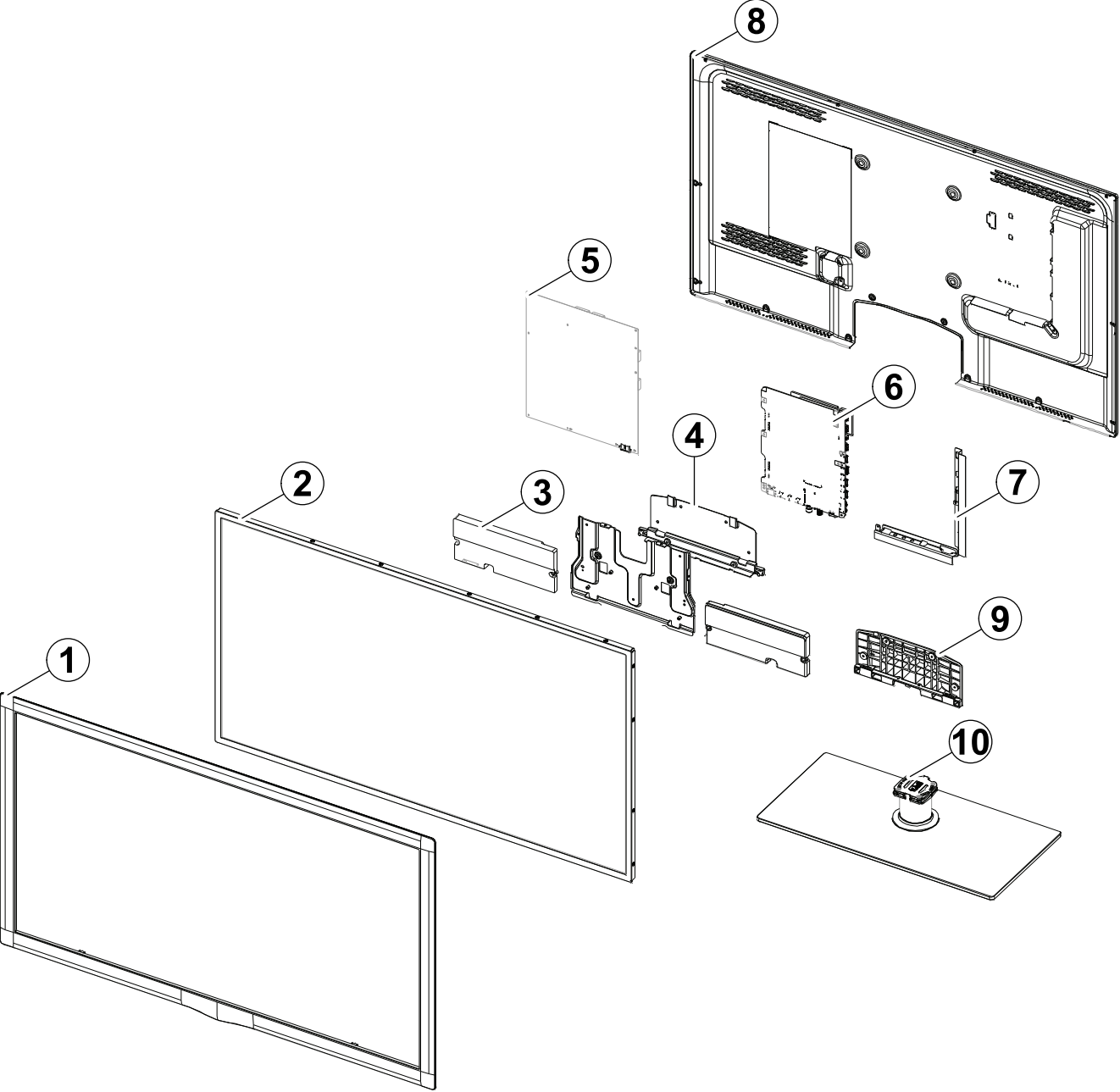


1. Exploded View & Part List

UE40D6200TS Exploded View



Parts List

No.	Parent	Lvl.	Loc.	Material Code	Description & Specification	SNA	Qty.
1	BN90-03134B	2	F001A	BN96-16850B	ASSY COVER P-FRONT; UD6050,40,EO,PC+PC,V2	SA	1
2	BN91-07347A	2		BN95-00467A	PRODUCT LCD; 6K 40 3D_LTJ400HV03-V,LCD Ce	SA	1
3	BN91-06860C	2	SP01A	BN96-16796A	ASSY SPEAKER P; 6ohm,4pin,10W,Enclosure t	SA	1
4	BN91-06860C	2	RB01	BN63-07807C	COVER-BOTTOM; UD5000 37,NH HIPS,V1,BK0020	SNA	1
5	BN91-07347A	2	P001A	BN44-00458B	DC VSS-LED TV PD BD; PD46A1D_BHS,PD46A1D_	SA	1
6	BN91-06866Q	2	M0014	BN94-04627S	ASSY PCB MAIN; UE40D6200TSXXN	SA	1
7	BN94-04627S	3	CB01	BN61-07083H	BRACKET-AV; UD6400,PCM,T0.45,BKN-P824,EUR	SNA	1
8	BN90-03125J	2	R001A	BN96-16841U	ASSY COVER P-REAR; UD6000,40,EO(SATELLITE)	SA	1
9	BN90-03129A	2	SG03A	BN96-16722A	ASSY STAND P-GUIDE; UD5000-6000,W/W,PC,G/	SA	1
10	BN90-03129A	2	SB04A	BN96-16771B	ASSY STAND P-BASE; UD5500 37/40,TEMPERED	SA	1

2. Electrical Parts List

Level	Loc.	Part Code	Description & Specification	Qty.	SA/SNA
			UE40D6200TSXZF (H303)		
1	R001A	BN90-03125J	ASSY COVER REAR;UD6000,40,EO(SATELLITE)	1	SNA
.2		6001-002671	SCREW-MACHINE;BH,+,M3,L6,ZPC(BLK),SWRCH1	6	SA
.2	R001A	BN96-16841U	ASSY COVER P-REAR;UD6000,40,EO(SATELLITE)	1	SA
..3		BN60-00162Y	SPACER-FOAM;FOAM,50000mm,Dark Gray,0.35T	1	SNA
..3	R001	BN63-07750B	COVER-REAR;UD6100 40,PCM,T0.45,BKN-P824	1	SNA
..3		BN63-08087B	SHEET-INSULATOR;UD6050,PC SHEET,T0.43,19	1	SNA
..3		BN68-03297Q	LABEL-TERMINAL BOTTOM;UD6200~6700,Europe	1	SNA
..3		BN68-03298N	LABEL-TERMINAL SIDE;UD6000~6100,Europe,D	1	SNA
..3		BN68-03518A	LABEL-STICKER;WW,ALL,70.6,72,LABEL-CI	1	SNA
.2	T0382	BP61-00495C	HOLDER-CARE;PJT,ACRYL-FOAM,T0.25,W30.0mm	0	SNA
1	S001A	BN90-03129A	ASSY STAND;UD6000,37/40,DARK BROWN,W/W	1	SNA
.2	SG03A	BN96-16722A	ASSY STAND P-GUIDE;UD5000-6000,W/W,PC,G/	1	SA
..3	T0524	6902-001063	BAG PE;LDPE,T0.05,W180,L350,TRP,RECYCLE	1	SNA
..3	SG03	BN61-07057A	GUIDE-STAND;UD5000 37,PC+G/F 20%,V2,BK00	1	SNA
..3		BN68-03388C	MANUAL FLYER-03,STAND GUIDE;U5000(32~55)	1	SNA
..3		BN96-18013E	ASSY ACCESSORY-SCREW;6003-001782,4EA,ALL	1	SNA
...4	SCREW	6003-001782	SCREW-TAPTYPE;BH,+,B,M4,L12,ZPC(BLK),SWR	4	SA
...4		BN69-05418B	PACKING-BAG SCREW;BN96-18013E,-,GREEN,T0	1	SNA
..3		BN96-18013F	ASSY ACCESSORY-SCREW;6001-002621,4EA,ALL	1	SNA
...4		6001-002621	SCREW-MACHINE;BH,+,M4,L8,ZPC(BLK),SWRCH1	4	SA
...4		BN69-05418C	PACKING-BAG SCREW;BN96-18013F,-,RED,T0,0	1	SNA
.2	SB04A	BN96-16771B	ASSY STAND P-BASE;UD5500 37/40,TEMPERED	1	SA
..3	SCREW	6003-001374	SCREW-TAPTYPE;FH,+,B,M4,L12,NI PLT,SWRCH	5	SA
..3	SCREW	6003-001782	SCREW-TAPTYPE;BH,+,B,M4,L12,ZPC(BLK),SWR	2	SA
..3		BN61-04692A	BOSS-PRIMER;#94,clear,35cps	0	SNA
..3		BN61-04731D	BOSS-TAPE;AMBER,ACRYL,T1.1,W20.0mm,WHITE	0	SNA
..3		BN61-05826A	BOSS-BOND;#760,Poly urethane,Black	2	SNA
..3	SG01	BN61-06998A	GUIDE-STAND NECK;LD550,46,PETG,V2,TP0003	1	SNA
...4		0103-007257	RESIN-PETG;ECOZEN-SE,NP01,TP0003,3.2 V2,	125	SNA
...4		BN61-06079B	GUIDE-NECK-INSERT;LC650,40,PETG HB,TP000	1	SNA
..3		BN61-07119A	HOLDER-NECK FRONT;LD550,46,PC+G/F 20%,BK	1	SNA
..3		BN61-07121A	BRACKET-STAND BOTTOM;LD550 46",SECC,T2.0	1	SNA
..3		BN61-07122A	HOLDER-NECK REAR;LD550,46,PC+G/F 20%,BK0	1	SNA
...4		0103-007285	RESIN-PC;MW32020GFU,BK0007,2.0 V2,PC/GF2	20	SNA
..3		BN61-07244A	HOLDER-SWIVEL RING;LD550,40,POM,60pie,NC	1	SNA
..3	CCM1	BN63-04755A	COVER-SHEET;AMBER,PE,T0.05,W150mm,200M,6	1	SNA
..3	FD01	BN63-07892B	COVER-DECORATION;UD5500,37/40/46,ABS+PMM	1	SNA

Exploded Views and Parts List

Level	Loc.	Part Code	Description & Specification	Qty.	SA/SNA
...4		0103-007441	RESIN-PMMA;SF-0950/B2106,BR0022,1.2T HB,	15	SNA
...3		BN63-08122B	COVER-STAND GLASS;UD5500,37/40,Glass,T8.	1	SNA
...3	T0527	BN68-01648B	LABEL WARNING;WW,PET,T0.05,40,25,EXPORT	1	SNA
...3	M0126	BN73-00215A	RUBBER-FOOT;40LB650,RUBBER,15*25,T4,BLK	4	SNA
...3		BN73-00300A	RUBBER-FOOT;LC650 40,RUBBER,27*27,BLACK	4	SNA
...3		BN74-00031A	GREASE;kanto-kasei FL-955,grease,wht	0	SNA
1		BN90-03134B	ASSY COVER FRONT;UD6050,40,EO	1	SNA
.2	F001A	BN96-16850B	ASSY COVER P-FRONT;UD6050,40,EO,PC+PC,V2	1	SA
...3	XT01	0201-001578	ADHESIVE-HM;HM-555,WHT,4,000 Cps	0	SNA
...3	T0069	BN60-00051A	SPACER-FELT;FELT,20.0,0.5,12.0	4	SNA
...3		BN60-00162C	SPACER-FOAM;FOAM,50000mm,Dark Gray,0.5T,	1	SNA
...3		BN60-00162L	SPACER-FOAM;FOAM,50000mm,Dark Gray,0.5T,	3	SNA
...3	CB11P	BN61-07248A	BRACKET-SUPPORT PCB;LD550,SK-5,T0.5,Plat	1	SA
...3	CCM1	BN63-05199C	COVER-SHEET;AMBER,PE,T0.08,W55mm,200M,CL	3	SNA
...3	F001	BN63-07744B	COVER-FRONT;UD6050,40,EO,PC+PC,V2,TP0010	1	SNA
...4		0103-007267	RESIN-PC;RD0005,2.0V0,NH PC,NH PC 2.0 V2	326	SNA
...4		0103-007268	RESIN-PC;TP0010,2.0V0,NH PC,NH PC 2.0 V2	556	SNA
...4		BN68-00513D	LABEL-RESIN;resin,-,art paper,-,10,25,-,	1	SNA
...3		BN68-00513E	LABEL-AMS;ams,-,art paper,-,10,38,-,whit	1	SNA
...3		BN68-03542D	LABEL-01,TV POP;5500,PET,T0.1,100,100,BI	1	SNA
...3		BN74-00052A	TAPE-PAPER;LB530,Crepe Paper,0.17mm, 10m	0	SNA
...3	FB21A	BN96-16729R	ASSY BOARD P-TOUCH FUNCTION & IR;UN40D6000	1	SA
1		BN91-06860C	ASSY SHIELD;UE40D6000TWXXC	1	SNA
.2	CIS1	0203-001586	TAPE-FILAMENT;#893,0.15,30,55,WHT,FILAME	0	SNA
.2	SCREW	6003-001782	SCREW-TAPTYPE;BH,+,B,M4,L12,ZPC(BLK),SWR	2	SA
.2	EC13	BN39-01486B	LEAD CONNECTOR;UE40C6000,Flat Connector	1	SNA
.2	RB01	BN63-07807C	COVER-BOTTOM;UD5000 37,NH HIPS,V1,BK0020	1	SNA
...3		0103-007489	RESIN-HIPS;FT875,BK,BK0020,V1,HIPS	70	SNA
...3		BN68-00513D	LABEL-RESIN;resin,-,art paper,-,10,25,-,	1	SNA
.2		BN73-00211C	PAD GAP;UN32D6500,PAD GAP,4.5 mm,35mm*35	1	SNA
.2	SP01A	BN96-16796A	ASSY SPEAKER P;6ohm,4pin,10W,Enclosure t	1	SA
.2	FB03A	BN96-17107B	ASSY BOARD P-RF MODULE;Bluetooth Module,	1	SA
.2	FL06	BN96-18130B	ASSY CABLE P-FPCB LVDS;LED120Hz-40inch,F	1	SA
1	M0017	BN91-06866Q	ASSY CHASSIS;UE40D6200TSXXN	1	SNA
.2	M0014	BN94-04627S	ASSY PCB MAIN;UE40D6200TSXXN	1	SA
...3		0202-001608	SOLDER-WIRE FLUX;LFC7-107,D0.8,99.3Sn/0.	0	SNA
...3	CIS1	0203-001586	TAPE-FILAMENT;#893,0.15,30,55,WHT,FILAME	0	SNA
...3	HDP01	BN61-06644A	HOLDER-PCB;LC750,NYNOL66,V0	1	SA
...3	CB01	BN61-07083H	BRACKET-AV;UD6400,PCM,T0.45,BKN-P824,EUR	1	SNA
...3		BN97-05444A	ASSY DRM-CI PLUS;BN46-00068A,U55A	1	SNA

Level	Loc.	Part Code	Description & Specification	Qty.	SA/SNA
...4		BN46-00068A	KEY CODE-CI PLUS;Genoa,TCTC,SERIAL CODIN	1	SNA
...3		BN97-05511A	ASSY SMD;UE32D6200TSXXN	1	SNA
...4		0202-001477	SOLDER-CREAM;LST309-M,D20~45um,96.5Sn/3A	3	SNA
...4	DS01A	0401-001056	DIODE-SWITCHING;MMBD4148SE,100V,200mA,SO	13	SA
...4		0403-001783	DIODE-ZENER;BZB84-C6V2,5.8/6.6V,300mW,SO	16	SNA
...4	D0254	0404-001271	DIODE-SCHOTTKY;SSA34,40V,3000mA,SMA,TP	3	SA
...4	D0254	0404-001404	DIODE-SCHOTTKY;BAT721C,40V,200mA,SOT-23,	6	SA
...4	T0139	0406-001200	DIODE-TVS;RCLAMP0504F,6/-V,150W,SC-70	2	SA
...4	T0139	0406-001271	DIODE-TVS;RCLAMP0524P,6/-V,150W,SLP251	1	SNA
...4		0406-001290	DIODE-TVS;3.0SMCJ20A,22.2/-/24.5V,3000W,	1	SNA
...4	Q101	0501-000445	TR-SMALL SIGNAL;KTC3875S-Y,NPN,150mW,SOT	2	SC
...4		0501-000669	TR-SMALL SIGNAL;KTA1505Y,PNP,150mW,SOT-2	1	SC
...4	CEQ2	0505-000110	FET-SILICON;2N7002,N,60V,115mA,7.5ohm,0.	3	SA
...4	Q409	0505-002386	FET-SILICON;AO3415AL,P,-20V,-4A,0.045ohm	1	SA
...4		0505-002854	FET-SILICON;AO5404E,N,20V,0.5A,0.55ohm,0	1	SNA
...4		0505-002894	FET-SILICON;MMBFJ177LT1G,P,20mA,300ohm,0	1	SNA
...4	IC104	0801-002630	IC-CMOS LOGIC;74AHCT1G08,2-INPUT AND GAT	1	SA
...4	ND51C2	0801-002780	IC-CMOS LOGIC;74LVC1G17,SCHMITT-TRIGGER	1	SA
...4	IC104	0801-003330	IC-CMOS LOGIC;Octal buffer,DQFN,20P,4.5x	3	SA
...4	IC104	0802-001012	IC-CMOS LOGIC;74LCX245,TRANSCEIVER,DQFN,	1	SNA
...4		0904-002631	IC-USC;QFN,28P,5.0mm X 5.0mm,12MHz,TP,PL	1	SA
...4		1001-001683	IC-VIDEO SWITCH;SiI9489,QFP,128P,14x14x1	1	SNA
...4		1001-001686	IC-ANALOG MULTIPLEX;74LV4052,CMOS,TT SOP,	1	SA
...4		1103-001500	IC-EEPROM;AT24C02C-SSHM-T,2Kbit,256x8,SO	1	SA
...4		1103-001506	IC-EEPROM;M24512-RMN6TP,512Kbit,64Kx8,SO	1	SA
...4		1105-002194	IC-DDR3 SDRAM;K4B1G1646G-BCH9,DDR3 SDRAM	4	SA
...4		1201-003158	IC-POWER AMP;TAS5725,PQFP,48P,7x7mm,DUAL	1	SA
...4	T0087	1203-002835	IC-POSI.FIXED REG.;7805,3P,6.6x6.1mm,PLA	1	SA
...4	IC703	1203-003121	IC-POSI.FIXED REG.;FAN1112,SOT-223,3P,6.	1	SA
...4		1203-004363	IC-VOL. DETECTOR;RT9818C-29PV,SOT-23,3P,	1	SA
...4		1203-005988	IC-DC/DC CONVERTER;TPS54620RGY,QFN,14P,3	1	SA
...4		1203-006017	IC-VOL. DETECTOR;RT9824GJ8,TSOT23,8P,2.9	1	SA
...4	T0087	1203-006109	IC-POSI.FIXED REG.;S-1206B33-M3T1G,SOT-2	1	SA
...4	T0087	1203-006130	IC-POSI.FIXED REG.;S-1172B25-U5T1G,SOT-8	1	SA
...4	T0087	1203-006135	IC-POSI.FIXED REG.;AP1117D-33-GZ-13-89,T	2	SA
...4	T0087	1203-006136	IC-POSI.FIXED REG.;AP1117D-18-GZ-13-89,T	1	SA
...4	T0087	1203-006141	IC-POSI.FIXED REG.;S-1172B33-U5T1G,SOT-8	1	SA
...4		1203-006619	IC-DC/DC CONVERTER;AOZ1033AI,SO-8,8P,4.9	3	SA
...4		1203-006683	IC-DC/DC CONVERTER;A8294SESTR-T,QFN,20P,	1	SNA
...4	IC118	1204-003101	IC-VIDEO PROCESS;SDP94,PBGA,345P,19x19mm	1	SA

Exploded Views and Parts List

Level	Loc.	Part Code	Description & Specification	Qty.	SA/SNA
...4		1204-003217	IC-DECODER;SDP1001,FCBGA,937P,35x35mm,PL	1	SA
...4		1205-003201	IC-BUS SWITCH;TC7WB125FK,SSOP,8P,2x2.3mm	1	SA
...4		1205-003479	IC-SWITCH;TPS2051BDBVR,SOT-23,5P,2.9x1.6	3	SA
...4		1205-003733	IC-SWITCH;AP2191MPG-13,MSOP-8L-EP,8P,2.9	1	SA
...4		1205-003735	IC-SWITCH;AP2151WG-7,SOT25,5P,2.9x1.6mm,	2	SA
...4		1205-003834	IC-ETHERNET CONTROLLER;RTL8201E-VC-GRT,Q	1	SA
...4		1205-004095	IC-CODEC;AK4686EQ,LQFP,48P,9.0x9.0x1.7mm	1	SA
...4		1205-004155	IC-SWITCH;AOZ1360AIL,SO-8,8P,4.9X3.9mm,P	1	SA
...4		1405-001271	VARISTOR;20Vdc,5A,1.0x0.5x0.6mm,TP	28	SA
...4	MR604	2007-000137	R-CHIP;2Kohm,5%,1/16W,TP,1005	5	SNA
...4	R105	2007-000138	R-CHIP;100ohm,5%,1/16W,TP,1005	20	SA
...4	AR49	2007-000140	R-CHIP;1Kohm,5%,1/16W,TP,1005	26	SNA
...4	MR306	2007-000141	R-CHIP;2.2Kohm,5%,1/16W,TP,1005	14	SNA
...4	R319	2007-000143	R-CHIP;4.7Kohm,5%,1/16W,TP,1005	51	SNA
...4		2007-000146	R-CHIP;6.8Kohm,5%,1/16W,TP,1005	1	SNA
...4	R104	2007-000148	R-CHIP;10Kohm,5%,1/16W,TP,1005	23	SA
...4	HDR2	2007-000151	R-CHIP;15Kohm,5%,1/16W,TP,1005	1	SNA
...4	MR36	2007-000153	R-CHIP;22Kohm,5%,1/16W,TP,1005	1	SNA
...4	AR43	2007-000155	R-CHIP;27Kohm,5%,1/16W,TP,1005	1	SNA
...4	MR13	2007-000157	R-CHIP;47Kohm,5%,1/16W,TP,1005	25	SNA
...4	DR39	2007-000162	R-CHIP;100Kohm,5%,1/16W,TP,1005	9	SNA
...4	R509	2007-000170	R-CHIP;1Mohm,5%,1/16W,TP,1005	4	SNA
...4	R111	2007-000171	R-CHIP;0ohm,5%,1/16W,TP,1005	12	SNA
...4	HDR17	2007-000172	R-CHIP;10ohm,5%,1/16W,TP,1005	6	SNA
...4	R338	2007-000173	R-CHIP;22ohm,5%,1/16W,TP,1005	23	SNA
...4	UR23	2007-000174	R-CHIP;47ohm,5%,1/16W,TP,1005	3	SNA
...4		2007-000231	R-CHIP;1.3Kohm,1%,1/10W,TP,1608	2	SA
...4	MR39	2007-000242	R-CHIP;1.5Kohm,5%,1/16W,TP,1005	1	SNA
...4	RT01	2007-000483	R-CHIP;1ohm,5%,1/8W,TP,2012	2	SNA
...4		2007-000758	R-CHIP;330Kohm,5%,1/16W,TP,1005	1	SNA
...4	DR37	2007-000932	R-CHIP;470ohm,5%,1/16W,TP,1005	4	SNA
...4	VR88	2007-001116	R-CHIP;680ohm,1%,1/10W,TP,1608	1	SA
...4		2007-001168	R-CHIP;75ohm,5%,1/4W,TP,3216	2	SA
...4		2007-001288	R-CHIP;18ohm,5%,1/16W,TP,1005	4	SA
...4	OTR1	2007-001292	R-CHIP;33ohm,5%,1/16W,TP,1005	11	SNA
...4	DR43	2007-001298	R-CHIP;51ohm,5%,1/16W,TP,1005	1	SNA
...4	MR31	2007-001305	R-CHIP;120ohm,5%,1/16W,TP,1005	1	SNA
...4	CER07	2007-001308	R-CHIP;200ohm,5%,1/16W,TP,1005	1	SNA
...4	R19548	2007-001311	R-CHIP;270ohm,5%,1/16W,TP,1005	1	SA
...4	R16	2007-001313	R-CHIP;330ohm,5%,1/16W,TP,1005	1	SNA

Level	Loc.	Part Code	Description & Specification	Qty.	SA/SNA
...4		2007-001316	R-CHIP;820ohm,5%,1/16W,TP,1005	1	SA
...4	R326	2007-001325	R-CHIP;3.3Kohm,5%,1/16W,TP,1005	2	SNA
...4	PR24	2007-002970	R-CHIP;56ohm,5%,1/16W,TP,1005	1	SA
...4	DR8	2007-007001	R-CHIP;3.9Kohm,5%,1/16W,TP,1005	1	SA
...4	PR8	2007-007015	R-CHIP;13Kohm,5%,1/16W,TP,1005	1	SNA
...4		2007-007100	R-CHIP;10Mohm,5%,1/16W,TP,1005	1	SA
...4		2007-007132	R-CHIP;15Kohm,1%,1/16W,TP,1005	2	SA
...4		2007-007134	R-CHIP;39Kohm,1%,1/16W,TP,1005	1	SA
...4		2007-007135	R-CHIP;18Kohm,1%,1/16W,TP,1005	3	SNA
...4		2007-007137	R-CHIP;1.2Kohm,1%,1/16W,TP,1005	3	SA
...4		2007-007138	R-CHIP;27Kohm,1%,1/16W,TP,1005	1	SNA
...4	DR4	2007-007142	R-CHIP;10Kohm,1%,1/16W,TP,1005	22	SNA
...4		2007-007156	R-CHIP;1ohm,5%,1/16W,TP,1005	4	SNA
...4		2007-007306	R-CHIP;100ohm,1%,1/16W,TP,1005	2	SNA
...4		2007-007318	R-CHIP;1Kohm,1%,1/16W,TP,1005	13	SNA
...4	HDR44	2007-007470	R-CHIP;7.5Kohm,1%,1/16W,TP,1005	4	SNA
...4		2007-007488	R-CHIP;75Kohm,1%,1/16W,TP,1005	1	SNA
...4		2007-007517	R-CHIP;240ohm,1%,1/16W,TP,1005	6	SNA
...4		2007-007617	R-CHIP;2.49Kohm,1%,1/10W,TP,1608	1	SA
...4		2007-007698	R-CHIP;5.1Kohm,1%,1/16W,TP,1005	2	SNA
...4		2007-007730	R-CHIP;6.8Mohm,1%,1/10W,TP,1608	1	SA
...4		2007-007766	R-CHIP;2Kohm,1%,1/16W,TP,1005	1	SNA
...4		2007-007797	R-CHIP;44.2ohm,1%,1/10W,TP,1608	2	SA
...4	MR11	2007-008015	R-CHIP;75ohm,1%,1/16W,TP,1005	18	SNA
...4		2007-008137	R-CHIP;24Kohm,1%,1/16W,TP,1005	3	SNA
...4		2007-008263	R-CHIP;3Kohm,1%,1/16W,TP,1005	2	SA
...4		2007-008275	R-CHIP;30Kohm,1%,1/16W,TP,1005	1	SNA
...4		2007-008391	R-CHIP;6.34Kohm,1%,1/16W,TP,1005	2	SA
...4		2007-009853	R-CHIP;1.6Kohm,1%,1/16W,TP,1005	1	SNA
...4	ZRN10	2011-001261	R-NETWORK;33ohm,5%,1/16W,L,CHIP,8P,TP,2.	4	SA
...4	DAR09	2011-001262	R-NETWORK;22ohm,5%,1/16W,L,CHIP,8P,TP,2.	8	SA
...4		2011-001345	R-NETWORK;10Kohm,5%,1/16W,L,CHIP,8P,TP,2	2	SA
...4	DRP29	2011-001396	R-NETWORK;4.7Kohm,5%,1/16W,L,CHIP,8P,TP,	2	SA
...4		2011-001449	R-NETWORK;22ohm,5%,1/16W,L,4P,TP,1010	11	SA
...4		2011-001497	R-NETWORK;470ohm,5%,1/16W,L,CHIP,4P,TP,1	2	SNA
...4		2011-001519	R-NETWORK;33OHM,5%,1/16W,L,CHIP,4P,TP,1.	1	SA
...4		2011-001527	R-NETWORK;4.7Kohm,5%,1/16W,L,CHIP,4P,TP,	3	SNA
...4	PC43	2203-000233	C-CER,CHIP;0.1nF,5%,50V,C0G,TP,1005	11	SA
...4	DC54	2203-000278	C-CER,CHIP;0.01nF,0.5pF,50V,C0G,TP,1005	1	SA
...4	DC2	2203-000330	C-CER,CHIP;0.012nF,5%,50V,C0G,TP,1005	8	SA

Exploded Views and Parts List

Level	Loc.	Part Code	Description & Specification	Qty.	SA/SNA
...4	DC1	2203-000386	C-CER,CHIP;0.015nF,5%,50V,C0G,TP,1005	8	SA
...4	MC302	2203-000425	C-CER,CHIP;0.018nF,5%,50V,C0G,TP,1005	2	SA
...4	C254	2203-000438	C-CER,CHIP;1nF,10%,50V,X7R,TP,1005	10	SA
...4	C507	2203-000489	C-CER,CHIP;2.2nF,10%,50V,X7R,TP,1005	4	SA
...4	V1233	2203-000575	C-CER,CHIP;220nF,10%,25V,X7R,TP,2012	8	SNA
...4	AD480	2203-000714	C-CER,CHIP;3.3nF,10%,50V,X7R,TP,1005,-	5	SA
...4	DC25	2203-000812	C-CER,CHIP;0.033nF,5%,50V,C0G,TP,1005	7	SA
...4	AD480	2203-000995	C-CER,CHIP;0.047nF,5%,50V,C0G,TP,1005	4	SA
...4	AD480	2203-002285	C-CER,CHIP;10nF,10%,50V,X7R,TP,1005	21	SNA
...4	DC18	2203-005138	C-CER,CHIP;1.8nF,10%,50V,X7R,1005	5	SA
...4	C231	2203-005221	C-CER,CHIP;15nF,10%,50V,X7R,1608	1	SNA
...4	AAC1	2203-005249	C-CER,CHIP;100nF,10%,50V,X7R,TP,1608	19	SNA
...4	AD480	2203-005344	C-CER,CHIP;22nF,10%,25V,X7R,TP,1005,0.5T	16	SNA
...4	PC8	2203-005642	C-CER,CHIP;0.22nF,5%,50V,NP0,1005	2	SNA
...4	AD480	2203-005968	C-CER,CHIP;4.7nF,10%,50V,X7R,TP,1005,0.5	3	SNA
...4	VC37	2203-006048	C-CER,CHIP;100nF,10%,10V,X7R,TP,1005	209	SA
...4	AD480	2203-006126	C-CER,CHIP;47nF,10%,16V,X7R,TP,1005	7	SNA
...4	C802	2203-006348	C-CER,CHIP;1000nF,10%,25V,X5R,TP,1608	5	SA
...4	C125	2203-006361	C-CER,CHIP;10000nF,10%,10V,X5R,TP,2012	27	SC
...4	AD480	2203-006460	C-CER,CHIP;2200nF,10%,16V,X5R,TP,1608,-	2	SA
...4	HE4	2203-006474	C-CER,CHIP;22000nF,20%,6.3V,X5R,2012	8	SA
...4	HDC11	2203-006562	C-CER,CHIP;1000nF,10%,10V,X5R,TP,1005	41	SNA
...4	AD480	2203-006824	C-CER,CHIP;4700nF,10%,10V,X5R,1608	11	SNA
...4	AD480	2203-006841	C-CER,CHIP;1000nF,10%,16V,X5R,TP,1005	1	SNA
...4	C23	2203-006890	C-CER,CHIP;10000nF,20%,6.3V,X5R,1608	62	SNA
...4	AD480	2203-006992	C-CER,CHIP;0.33nF,5%,50V,C0G,TP,1005	2	SNA
...4	AD480	2203-007306	C-CER,CHIP;10000nF,10%,25V,X5R,TP,2012,1	4	SNA
...4	AD480	2203-007513	C-CER,CHIP;10000nF,10%,10V,X5R,TP,1608	6	SA
...4		2402-001403	C-AL,SMD;100uF,20%,35V,TP,10.3X10.3	2	SNA
...4	T0052	2703-000158	INDUCTOR-SMD;1uH,10%,2012	3	SA
...4	S1Q036	12703-000408	INDUCTOR-SMD;3.3uH,20%,3225	1	SA
...4	T0052	2703-001239	INDUCTOR-SMD;3.3uH,10%,1608	8	SA
...4	T0052	2703-002268	INDUCTOR-SMD;8.2nH,5%,1005	2	SNA
...4	T0052	2703-003713	INDUCTOR-SMD;1.5uH,20%,7366	1	SA
...4	T0052	2703-003790	INDUCTOR-SMD;4.7uH,20%,8080	3	SA
...4		2703-003879	INDUCTOR-SMD;33uH,20%,10.0mmX10.0mm	1	SA
...4		2703-003930	INDUCTOR-SMD;4.7uH,20%,5050	4	SA
...4	X202	2801-003948	CRYSTAL-SMD;12MHz,30ppm,28-AAN,12pF,60oh	1	SA
...4	PX1	2801-004021	CRYSTAL-SMD;24.576MHz,20ppm,28-AAN,12pF,	1	SA
...4	X202	2801-004629	CRYSTAL-SMD;27MHz,20ppm,12pF,50ohm,TP	1	SNA

Level	Loc.	Part Code	Description & Specification	Qty.	SA/SNA
...4	X202	2801-004734	CRYSTAL-SMD;25.000000MHZ,20ppm,28-AAN,12	1	SA
...4	X202	2801-004774	CRYSTAL-SMD;24MHZ,30ppm,14pF,30ohm,TP	2	SA
...4	X202	2801-004775	CRYSTAL-SMD;12MHZ,30ppm,16pF,30ohm,TP	1	SNA
...4	F103	2901-001506	FILTER-EMI SMD;5V,0.13A,0pF,2x1x0.5mm,TP	2	SA
...4	DR32	3301-000314	BEAD-SMD;120ohm,1.6x0.8x0.8mm,-,-,-	11	SNA
...4	T0568	3301-001236	BEAD-SMD;60ohm,1608	3	SNA
...4	T0568	3301-002039	BEAD-SMD;26ohm,1608,TP	46	SA
...4	F201	3601-001374	FUSE-SURFACE MOUNT;32V,5A,FAST-ACTING,Hi	1	SA
...4	CN401	3701-001724	CONNECTOR-DSUB;15P,3ROW,FEMALE,ANGLE,NI	1	SA
...4	CN601	3701-001736	CONNECTOR-HDMI;19P,2ROW,FEMALE,SMD-A	4	SA
...4	CN303	3707-001104	CONNECTOR-OPTICAL;SMD-A(Ultra Slim),SPDI	1	SA
...4	CN160	3708-002909	CONNECTOR-FPC/FFC/PIC;82P,0.5mm,SMD-S,AU	1	SA
...4		3710-002276	SOCKET-INTERFACE;24P,1R,0.5mm,SMD-A,AU,B	1	SC
...4		3710-003374	CONNECTOR-SOCKET;64P,2R,0.5mm,ANGLE,NI+S	1	SA
...4	HB01A	3711-007319	HEADER-BOARD TO CABLE;SMD,4P,1R,2.50mm,S	1	SA
...4		3711-007571	CONNECTOR-HEADER;BOX,18P,2R,2.0mm,ANGLE,	1	SA
...4	EH01	3711-007742	HEADER-BOARD TO CABLE;BOX,20P,2R,2mm,ANG	1	SA
...4	CN150	3722-003044	JACK-USB;4P/1C,NI,BLK,SMD-A,A-TYPE	3	SA
...4	CN302	3722-003158	JACK-PHONE;1/6P,NI,BLK,ANGLE	2	SA
...4	CN170	3722-003199	JACK-MODULAR;8P/8C,ANGLE,AU,1P	1	SA
...4	CN501	3722-003207	JACK-PHONE;2P/9C,AU,LIMEGRN,SMD-A(DIP)	1	SA
...4	ET01	BN40-00217A	TUNER;DNSS243VH142A,DNSS243VH142A,DVB-TC	1	SA
...4		BN41-01604A	PCB MAIN;FR-4,4,1.2T,183x240	1	SNA
...4		BN97-05338A	ASSY MICOM-INAND;T-GAS6DEUC-1004.0,2011.	1	SNA
....5		1107-001983	IC-NAND FLASH;SDIN5D2-2G-944D,2GByte,BGA	1	SNA
...4		BN97-05339A	ASSY MICOM;T-GAS6DEUC-XXXX,U69A,KFG1GN6W	1	SNA
....5		1107-001990	IC-NAND FLASH;KFG1GN6W2D-HIB6,1Gbit,64Mx	1	SA
...4		BN97-05512A	ASSY MICOM;T-GENDEUS1-XXXX,U69A, U68A,20	1	SNA
....5		0903-001718	IC-MICROCONTROLLER;61P805-RG480WT,LQFP,4	1	SNA
1		BN91-07347A	ASSY LCM-AMLCD VD;BN95-00467A,BN44-004,6	1	SNA
.2	M-P	6001-002653	SCREW-MACHINE;BH,+,M3,L6,ZPC(WHT),SWRCH1	5	SA
.2	P001A	BN44-00458B	DC VSS-LED TV PD BD;PD46A1D_BHS,PD46A1D_	1	SA
.2		BN95-00467A	PRODUCT LCD;6K 40 3D_LTJ400HV03-V,LCD Ce	1	SA
..3	M-P	6001-002653	SCREW-MACHINE;BH,+,M3,L6,ZPC(WHT),SWRCH1	2	SA
..3		6001-002673	SCREW-MACHINE;CH,+,M3.0,L4.0,Ni PLT,SWRC	27	SNA
..3		BN68-02471A	LABEL-STICKER;WW,Art Paper,80,40,AV	1	SNA
..3		BN74-00053A	TAPE-PROTECTION;T460BE1-FB,T550BE1-FB,3M	5	SNA
..3		BN90-03084A	ASSY MISC-BLU;LTJ400HF01-V,6K 40" LCD	1	SNA
...4		6001-002672	SCREW-MACHINE;FH,+,M1.7,L4.0,Ni PLT,SWRC	12	SNA
...4		6001-002673	SCREW-MACHINE;CH,+,M3.0,L4.0,Ni PLT,SWRC	10	SNA

Exploded Views and Parts List

Level	Loc.	Part Code	Description & Specification	Qty.	SA/SNA
...4		BN02-00028A	TAPE DOUBLE FACE-REFLECTOR;NNB 32/40/46/	1	SNA
...4		BN02-00043A	TAPE ETC-SHEET;NNB 32/40/46/55,3M 3357 F	4	SNA
...4		BN02-00044A	TAPE ETC-FIXING;NNB 32/40/46/55,SB00+MKT	2	SNA
...4		BN63-08067A	SHEET-PROTECT;40" 5K6K, JS153HH,220 um,8	1	SNA
...4		BN63-08068A	SHEET-PRISM H;40" 5K6K, MAS670M, 3degree	1	SNA
...4		BN63-08069A	SHEET-DIFFUSER;40" 5K6K, PTR883,,290um,8	1	SNA
...4		BN63-08081A	SHEET-REFLECTOR;40" 5K6K, SLP7-15R,,360u	1	SNA
...4		BN64-01639A	CHASSIS-BOTTOM BAR (U);NNB 5K 40",AL 606	1	SNA
...4		BN96-16605A	ASSY MISC P-LED BAR L;40" 5K_6K_Left,G/D	1	SNA
...4		BN96-16606A	ASSY MISC P-LED BAR R;40" 5K_6K_Right,G/	1	SNA
...4		BN96-16627A	ASSY MISC P-LGP LED;40",5K,6K PMMA,,3T 8	1	SNA
....5		BN61-07273A	LGP-LED;40",5K,6K PMMA,,3T ,896.6 X 509.	1	SNA
....5		BN74-00156A	TAPE-REFLECTOR LGP;40" 5K/6K,,E60L,895.2	1	SNA
...4		BN96-16681A	ASSY MISC P-CHASSIS BOTTOM;NNB 40" LCD/	1	SNA
....5		6001-002617	SCREW-MACHINE;CH,+,M3,L4,Ni_PLT (White),	8	SNA
....5		6001-002673	SCREW-MACHINE;CH,+,M3.0,L4.0,Ni PLT,SWRC	10	SNA
....5		BN02-00031A	TAPE FILAMENT-WIRE;NNB 32/40/46/55,3M891	5	SNA
....5		BN02-00032A	TAPE DOUBLE FACE-HOLDER LGP;NNB 32/40/46	2	SNA
....5		BN02-00041A	TAPE ETC-HEAT-SINK;NNB 32/40/46/55,MTU 1	8	SNA
....5		BN39-01424A	LEAD CONNECTOR-LED;40" 5K_6K wire-harnes	1	SNA
....5		BN61-07328A	HOLDER-LGP B;NNB 32/37/40/46/55,SILICONE	1	SNA
....5		BN61-07329A	HOLDER-WIRE;NNB 32/37/40/46/55,SILICON R	1	SNA
....5		BN61-07388A	HOLDER-LGP C;NNB 32/37/40/46/55,PC,6.2,1	2	SNA
....5		BN61-07389A	HOLDER-LGP D;NNB 46/55,SILICONE-RUBBER,7	1	SNA
....5		BN61-07424A	BRACKET-WALL MOUNT;NNB 32/40/46/55,SPCC,	4	SNA
....5		BN62-00161A	INSULATION-FFC;NNB 32/40/46/55,PET,T0.1,	1	SNA
....5		BN62-00165A	INSULATION-POWER;NNB 40",Longhua PC1870	1	SNA
....5		BN62-00175A	INSULATION-SOURCE;NNB 40",PET,T0.1,W14,	2	SNA
....5	CC02	BN64-01638A	CHASSIS-BOTTOM;NNB 5K 40",AL3104,T1.0,W5	1	SNA
....5		BN64-01640A	CHASSIS-BOTTOM BAR (LR);NNB 5K 40",AL 60	2	SNA
....5		BN74-00061A	TAPE-BOTTOM CHASSIS;NNB 32/40/46/55,SK-2	2	SNA
...4		BN96-16684A	ASSY FRAME P-MOLD MIDDLE (U);NNB 40" LC	1	SNA
....5		BN60-00308A	SPACER-PANEL (U);NNB 40",ESD-SP(0.4T)+M	2	SNA
....5		BN61-07291A	FRAME-MOLD MIDDLE U;NNB 5,6,6.5K_40",PC+	1	SNA
...4		BN96-16685A	ASSY FRAME P-MOLD MIDDLE (D);NNB 40" LC	1	SNA
....5		BN60-00340A	SPACER-PAD (UD);NNB 40",SSP-40+MKT50D,L	2	SNA
....5		BN60-00359A	SPACER-SPACER PANEL DL_1;NNB 40",ESD-SP	1	SNA
....5		BN60-00360A	SPACER-SPACER PANEL DL_2;NNB 40",ESD-SP	1	SNA
....5		BN60-00361A	SPACER-SPACER PANEL DR_1;NNB 40",ESD-SP	1	SNA
....5		BN60-00362A	SPACER-SPACER PANEL DR_2;NNB 40",ESD-SP	1	SNA

Level	Loc.	Part Code	Description & Specification	Qty.	SA/SNA
...5		BN61-07290A	FRAME-MOLD MIDDLE D;NNB 5K,40",PC+G/F 10	1	SNA
...4		BN96-16686A	ASSY FRAME P-MOLD MIDDLE (L);NNB 40" LC	2	SNA
...5		BN02-00040A	TAPE DOUBLE FACE-MIDDLE;NNB 32/40/46/55,	2	SNA
...5		BN60-00309A	SPACER-PANEL (LR);NNB 40",ESD-SP(0.4T)+	2	SNA
...5		BN60-00331A	SPACER-PG (LR);NNB 40" LCD-HD,ESD-SP(1.	4	SNA
...5		BN60-00341B	SPACER-PAD (LR);NNB 40",SSP-40+MKT50D,L	2	SNA
...5		BN61-07289A	FRAME-MOLD MIDDLE-L;NNB 5K_40",PC+G/F 10	2	SNA
..3		BN96-16500A	ASSY OPEN CELL;LSJ400HV01-V,8bit,40inch,	1	SNA
..3	TCON	BN96-16504A	ASSY PCB P-T-CON;LSJ400HV01-S,FR4,SUWON,	1	SA
..3		BN96-16679A	ASSY MISC P-CHASSIS TOP;NNB 40" 5/6K	1	SNA
..4		BN60-00296A	SPACER-TOP (UD);NNB 40",E_FOAM,L896.0,T	2	SNA
..4		BN60-00297A	SPACER-TOP (LR);NNB 40",E_FOAM,L501.2,T	2	SNA
..4	AC157	BN64-01637A	CHASSIS-TOP;NNB 5K 40",SECC,T0.8,W526.6,	1	SNA
..3		BN96-16680B	ASSY COVER P-SOURCE;NNB 5/6/6.4/6.51K 40	1	SNA
..4		BN60-00162Z	SPACER-FOAM;FOAM,50000mm,Dark Gray,0.35T	1	SNA
..4		BN60-00342A	SPACER-SOURCE;NNB 32/40/46/55,SH0140U+AT	4	SNA
..4		BN61-02932N	BRACKET-STOPPER NUT;LED TV,M3*D7*L6.6,L6	5	SNA
..4		BN61-07359A	BRACKET-STOPPER NUT;LED TV D6500,D6*L5.5	2	SNA
..4		BN62-00155A	INSULATION-COVER LR;NNB 40" INSULATION	2	SNA
..4		BN63-08033A	COVER-SOURCE;NNB 40",SECC,T0.8,W43,L891	1	SNA
..3	SB05A	BN96-16911A	ASSY BRACKET P-STAND LINK;UD5000 37/40/4	1	SNA
..4		BN61-02932L	BRACKET-STOPPER NUT;LED TV,M3*L7.5*D5.5,	2	SNA
..4		BN61-02932M	BRACKET-STOPPER NUT;LED TV D6500,M4*D6*L	4	SNA
..4	CB18	BN61-07072A	BRACKET-STAND LINK;UD6100 46",SECC,T 2.0	1	SNA
1		BN92-07869A	ASSY P/MATERIAL;UD6000,40	1	SNA
.2		6902-000379	BAG AIR;LDPE,T0.2,W1000,L1800,TRP,1260.0	1	SNA
.2	M040	6922-000003	BAND PP;PP,T0.8,W18,L1650M,TRP,DA69-9014	1	SNA
.2		BN68-02422B	LABEL-WARNING SHIPPING;ALL MODEL,A/P 100	1	SNA
.2		BN69-00257B	PACKING-PAD;- ,PAPER,-,-,CB-SW4,1100,790,	1	SNA
.2		BN69-03982E	PAD PACKING-EDGE;LB6T,PAPER,8,120,2060,Y	1	SNA
.2		BN69-05184M	PALLET;40D5000,WOOD,1180,1150,135,14000,	1	SNA
.2		BN69-05418A	PACKING-BAG WRAPPING;- ,LDPE,-,0,019,500,	2	SNA
.2		BN69-05690A	CUSHION-01,SET;UD6100 40",EPS,EXPORT, DE	1	SNA
.2		BN69-05788A	CUSHION-01,FRONT;40UD7000,EPS	1	SNA
.2		BN69-06675B	PACKING-SHEET PALLET;BAG SHEET,CB,-,PEP1	1	SNA
.2		BN69-06681A	PACKING-BAG SHEET ROLL;- ,CB,-,FOAM 0,5mm	2	SNA
.2		BN74-00008D	TAPE-OPP MASKING;OPP,T0.05,W75,L800M,CLR	3	SNA
1		BN92-07938C	ASSY BOX;UD6050(6200),40,EO(SATELLITE)	1	SNA
.2		BH68-00662A	LABEL BOX-00;ALL MODEL,MOJO 90G,60,110,W	1	SNA
.2		BN69-06114A	BOX-SET;40UD6200,CB,A-01,DW2,ECT50,YEL,W	1	SNA

Exploded Views and Parts List

Level	Loc.	Part Code	Description & Specification	Qty.	SA/SNA
1		BN92-08062E	ASSY LABEL;UE40D6000TWXXC	1	SNA
.2		BN68-03652X	LABEL-STICKER;UD6U,T0.05,60,120,Energy R	1	SNA
.2	T0527	BP68-00052B	LABEL-00,RATING;CCTV,TETRON PAPER,T0.05,	1	SNA
1	ACCE1	BN92-08119A	ASSY ACCESSORY;UE32D6200TSXXN	1	SNA
.2	ACCE2	BN96-18581C	ASSY ACCESSORY-CABEL;UE32D6200TSXXN	1	SNA
..3		3709-001663	CONNECTOR-CARD EDGE;64P,0.5mm,MALE,PCMC1	1	SA
..3	EC11	3903-000525	CBF-POWER CORD;DT,CEE,LP-21L,250V,2.5A,B	1	SA
..3	T0120	4301-000121	BATTERY-MN;1.5V,R03,10.5x44.5m,HOLDER,7.	2	SNA
..3		6902-001340	BAG PE;LDPE,T0.05,W250,L350,TRP,RECYCLE	1	SNA
..3	REMO2	AA59-00507A	REMOCON;TM1050,49,3V,EUROPE iDTV,6320,63	1	SA
..3	EC03	BN39-01154A	CBF SIGNAL;Chelsea Slim,24P/20P,30AWG,20	1	SA
..3	EC03	BN39-01154W	CBF SIGNAL;COMPONENT GENDER / UD8000,2P,	1	SA
..3		BN61-05491A	HOLDER-WIRE STAND;UB7000 46inch,NYRON	1	SNA
..3	M9889	BN63-01798B	CLOTH-CLEAN;cloth,180,200,sea blue,ToC	1	SNA
..3	EH03A	BN96-18153A	ASSY HOLDER P-RING;11 LED-TV	1	SNA
..4		6902-001404	BAG ZIPPER;LDPE,T0.05,W80,L100,TRP	1	SNA
..4	AH365	BN61-07295A	HOLDER-RING;40UD5500,ABS,BK0007,HB	4	SNA
.2	ACCE4	BN96-18657A	ASSY ACCESSORY-MANUAL;UE32D6200TSXXN	1	SNA
..3		6902-000476	BAG PE;LDPE,T0.03,W250,L350,TRP,Recycle,	1	SNA
..3	T0527	BN68-00513A	LABEL-E,PASS;ALL MODEL,YUPO(110G),50X15,	1	SNA
..3		BN68-00514K	MANUAL FLYER-WARRANTY CARD;comm,Samsung,	1	SNA
..3		BN68-03019A	LEAFLET-SAFETY GUIDE;ALL,SAMSUNG,28LENGS	1	SNA
..3		BN68-03476E	MANUAL USERS;UD6300,6320,Samsung,4Langs,	1	SNA
..3		BN68-03602F	MANUAL FLYER-01,SAMART TV GUIDE;UD5500~,	1	SNA