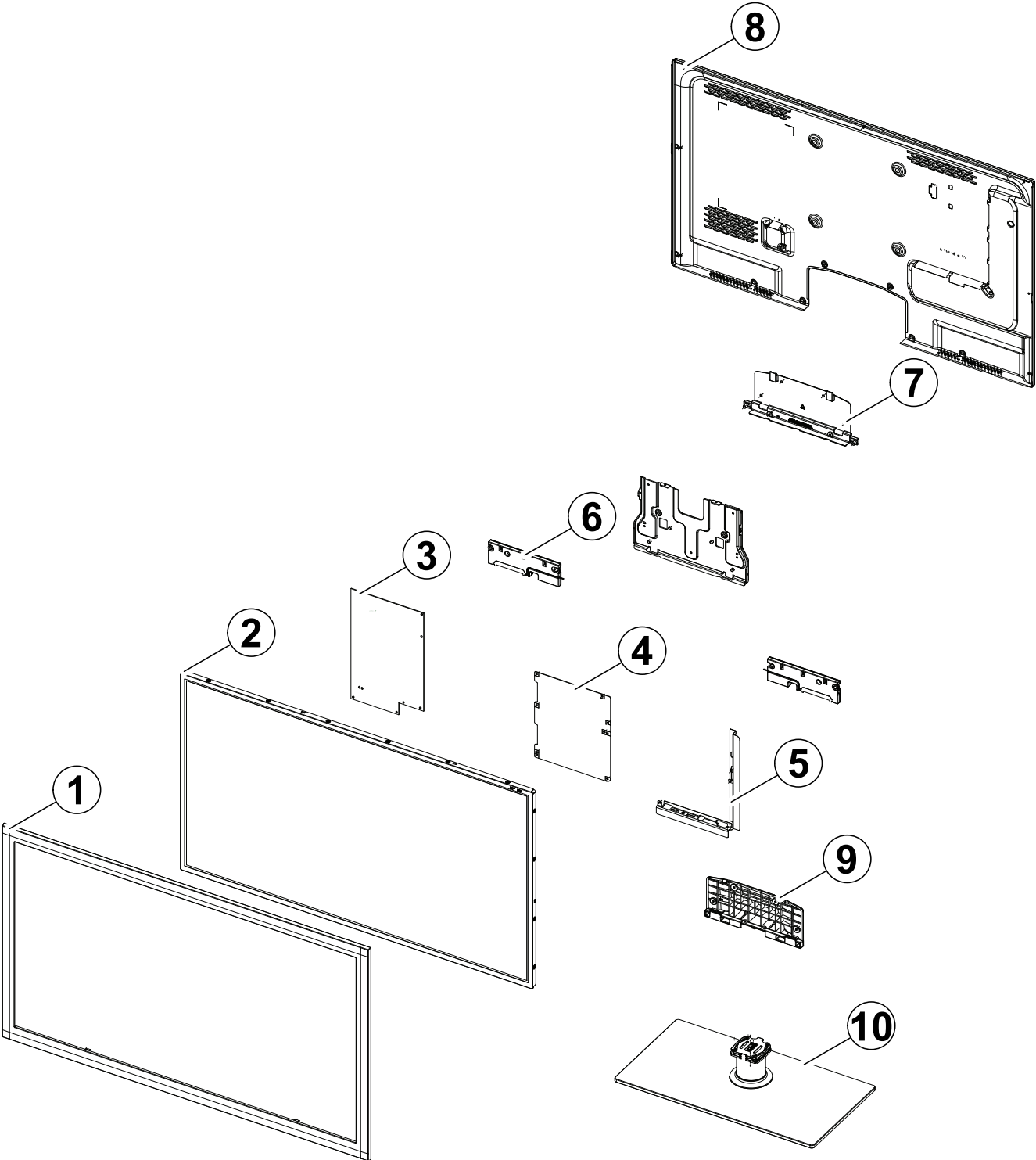


1. Exploded View & Part List

Exploded View



Parts List

No.	Parent	Lvl.	Loc.	Material Code	Description & Specification	SNA	Qty.
1	BN90-03211C	2	F001A	BN96-16907C	ASSY COVER P-FRONT; UD5500 40,EO,PC(CLR)+	SA	1
2	BN91-06681A	2	PANEL	BN07-00990A	LCD-PANEL; LD400BGC-C1,CLL6BC2,8 bits,40	SA	1
3	BN91-06973A	2	P001A	BN44-00423A	DC VSS-LED TV PD BD; PD46A1_BSM,PSLF151A0	SA	1
4	BN91-06975C	2	M0014	BN94-04659C	ASSY PCB MAIN; UE40D5700RSXXN	SA	1
5	BN94-04659C	3	CB01	BN61-07083C	BRACKET-AV; UD5000,PCM,T0.45,BKN-P824,EUR	SNA	1
6	BN91-06973A	2	SP01A	BN96-16796A	ASSY SPEAKER P; 6ohm,4pin,10W,Enclosure t	SA	1
7	BN91-06973A	2	RB01	BN63-07807C	COVER-BOTTOM; UD5000 37,NH HIPS,V1,BK0020	SA	1
8	BN90-03223K	2	R001A	BN96-16841K	ASSY COVER P-REAR; UD5000,40,EO(SATELLITE)	SA	1
9	BN90-03129A	2	SG03A	BN96-16722A	ASSY STAND P-GUIDE; UD5000-6000,W/W,PC,G/	SA	1
10	BN90-03129A	2	SB04A	BN96-16771B	ASSY STAND P-BASE; UD5500 37/40,TEMPERED	SA	1

2. Electrical Parts List

Level	Loc.	Part Code	Description & Specification	Qty.	SA/SNA
			UE40D5700RSXZF (CN01)		
1	S001A	BN90-03129A	ASSY STAND;UD6000,37/40,DARK BROWN,W/W	1	SNA
.2	SG03A	BN96-16722A	ASSY STAND P-GUIDE;UD5000-6000,W/W,PC,G/	1	SA
..3	T0524	6902-001063	BAG PE;LDPE,T0.05,W180,L350,TRP,RECYCLE	1	SNA
..3	SG03	BN61-07057A	GUIDE-STAND;UD5000 37,PC+G/F 20%,V2,BK00	1	SNA
..3		BN68-03388C	MANUAL FLYER-01,STAND GUIDE;U5000(32~55)	1	SNA
..3		BN96-18013E	ASSY ACCESSORY-SCREW;6003-001782,4EA,ALL	1	SNA
...4	SCREW	6003-001782	SCREW-TAPTYPE;BH,+,B,M4,L12,ZPC(BLK),SWR	4	SA
..3		BN96-18013F	ASSY ACCESSORY-SCREW;6001-002621,4EA,ALL	1	SNA
...4		6001-002621	SCREW-MACHINE;BH,+,M4,L8,ZPC(BLK),SWRCHI	4	SA
...4	T0524	6902-000341	BAG PE;LDPE,T0.05,L90,W70,TRP,,,PE MARK	1	SNA
.2	SB04A	BN96-16771B	ASSY STAND P-BASE;UD5500 37/40,TEMPERED	1	SA
..3	SCREW	6003-001374	SCREW-TAPTYPE;FH,+,B,M4,L12,NI PLT,SWRCH	5	SA
..3	SCREW	6003-001782	SCREW-TAPTYPE;BH,+,B,M4,L12,ZPC(BLK),SWR	2	SA
..3		BN61-04692A	BOSS-PRIMER;#94,clear,35cps	0	SNA
..3		BN61-04731D	BOSS-TAPE;AMBER,ACRYL,T1.1,W20.0mm,WHITE	0	SNA
..3		BN61-05826A	BOSS-BOND;#760,Poly urethane,Black	2	SNA
..3	SG01	BN61-06998A	GUIDE-STAND NECK;LD550,46,PETG,V2,TP0003	1	SNA
...4		0103-007257	RESIN-PETG;ECOZEN-SE,NP01,TP0003,3.2 V2,	125	SNA
...4		BN61-06079B	GUIDE-NECK-INSERT;LC650,40,PETG HB,TP000	1	SNA
..3		BN61-07119A	HOLDER-NECK FRONT;LD550,46,PC+G/F 20%,BK	1	SNA
..3		BN61-07121A	BRACKET-STAND BOTTOM;LD550 46",SECC,T2.0	1	SNA
..3		BN61-07122A	HOLDER-NECK REAR;LD550,46,PC+G/F 20%,BK0	1	SNA
...4		0103-007285	RESIN-PC;MW32020GFU,BK0007,2.0 V2,PC/GF2	20	SNA
..3		BN61-07244A	HOLDER-SWIVEL RING;LD550,40,POM,60pie,NC	1	SNA
..3	CCM1	BN63-04755A	COVER-SHEET;AMBER,PE,T0.05,W150mm,200M,6	1	SNA
..3	FD01	BN63-07892B	COVER-DECORATION;UD5500,37/40/46,ABS+PMM	1	SNA
...4		0103-007441	RESIN-PMMA;SF-0950/B2106,BR0022,1.2T HB,	15	SNA
..3		BN63-08122B	COVER-STAND GLASS;UD5500,37/40,Glass,T8.	1	SNA
..3	T0527	BN68-01648B	LABEL WARNING;WW,PET,T0.05,40,25,EXPORT	1	SNA
..3	M0126	BN73-00215A	RUBBER-FOOT;40LB650,RUBBER,15*25,T4,BLK	4	SNA
..3		BN73-00300A	RUBBER-FOOT;LC650 40,RUBBER,27*27,BLACK	4	SNA
..3		BN74-00031A	GREASE;kanto-kasei FL-955,grease,wht	0	SNA
1		BN90-03211C	ASSY COVER FRONT;UD5500 40	1	SNA
.2	F001A	BN96-16907C	ASSY COVER P-FRONT;UD5500 40,EO,PC(CLR)+	1	SA
..3	XT01	0201-001578	ADHESIVE-HM;HM-555,WHT,4,000 Cps	0	SNA
..3	T0069	BN60-00051A	SPACER-FELT;FELT,20.0,0.5,12.0	4	SNA
..3		BN60-00162C	SPACER-FOAM;FOAM,50000mm,Dark Gray,0.5T,	1	SNA

Exploded Views and Parts List

Level	Loc.	Part Code	Description & Specification	Qty.	SA/SNA
...3		BN60-00162L	SPACER-FOAM;FOAM,50000mm,Dark Gray,0.5T,	3	SNA
...3	CB11P	BN61-07248A	BRACKET-SUPPORT PCB;LD550,SK-5,T0.5,Plat	1	SA
...3	CCM1	BN63-05199B	COVER-SHEET;AMBER,PE,T0.08,W65mm,200M,CL	2	SNA
...3	CCM1	BN63-05199C	COVER-SHEET;AMBER,PE,T0.08,W55mm,200M,CL	4	SNA
...3	F001	BN63-07876C	COVER-FRONT;UD5500 40,EO,PC(CLR)+PC(Rose	1	SNA
...4		0103-007267	RESIN-PC;RD0005,2.0V0,NH PC,NH PC 2.0 V2	310	SNA
...4		0103-007268	RESIN-PC;TP0010,2.0V0,NH PC,NH PC 2.0 V2	420	SNA
...4		BN68-00513D	LABEL-RESIN;resin,-,art paper,-,10,25,-,	1	SNA
...3		BN68-03542A	LABEL-TV-POP;5500,American,PET,T0.1,100,	1	SNA
...3		BN74-00052A	TAPE-PAPER;LB530,Crepe Paper,0.17mm, 10m	0	SNA
...3	FB21A	BN96-16729K	ASSY BOARD P-TOUCH FUNCTION & IR;UN40D6000	1	SA
1	R001A	BN90-03223K	ASSY COVER REAR;UD5000 40	1	SNA
.2		6001-002671	SCREW-MACHINE;BH,+,M3,L6,ZPC(BLK),SWRCH1	6	SA
.2	R001A	BN96-16841K	ASSY COVER P-REAR;UD5000,40,EO(SATELLITE	1	SA
...3		BN60-00162Y	SPACER-FOAM;FOAM,50000mm,Dark Gray,0.35T	1	SNA
...3	R001	BN63-07750B	COVER-REAR;UD6100 40,PCM,T0.45,BKN-P824	1	SNA
...3		BN63-08087B	SHEET-INSULATOR;UD6050,PC SHEET,T0.43,19	1	SNA
...3		BN68-00513E	LABEL-AMS;ams,-,art paper,-,10,38,-,whit	1	SNA
...3		BN68-03297E	LABEL-TERMINAL BOTTOM;LD5000/5500,EO(S),	1	SNA
...3		BN68-03298B	LABEL-TERMINAL SIDE;LD5000/5500,UO,PET,T	1	SNA
...3		BN68-03518A	LABEL-STICKER;WW,ALL,60.5,68.8,LABEL-CI	1	SNA
1		BN91-06681A	ASSY LCD-CHIMEI;BN07-00990A	1	SNA
.2	PANEL	BN07-00990A	LCD-PANEL;LD400BGC-C1,CLL6BC2,8 bits,40	1	SA
1		BN91-06973A	ASSY SHIELD;UE40D5700RSXXN	1	SNA
.2	CIS1	0203-001586	TAPE-FILAMENT;#893,0.15,30,55,WHT,FILAME	0	SNA
.2	M-P	6001-002653	SCREW-MACHINE;BH,+,M3,L6,ZPC(WHT),SWRCH1	11	SA
.2	SCREW	6003-001782	SCREW-TAPTYPE;BH,+,B,M4,L12,ZPC(BLK),SWR	2	SA
.2	EC13	BN39-01481A	LEAD CONNECTOR;UN40D5500,Flat Connector	1	SA
.2	P001A	BN44-00423A	DC VSS-LED TV PD BD;PD46A1_BSM,PSLF151A0	1	SA
.2	RB01	BN63-07807C	COVER-BOTTOM;UD5000 37,NH HIPS,V1,BK0020	1	SA
...3		0103-007489	RESIN-HIPS;FT875,BK,BK0020,V1,HIPS	70	SNA
...3		BN68-00513D	LABEL-RESIN;resin,-,art paper,-,10,25,-,	1	SNA
.2	SP01A	BN96-16796A	ASSY SPEAKER P;6ohm,4pin,10W,Enclosure t	1	SA
.2	FL06	BN96-17116F	ASSY CABLE P-FFC;UE37D5000,FFC,345mm,51P	1	SA
1	M0017	BN91-06975C	ASSY CHASSIS;UE40D5700RSXXN	1	SNA
.2	M0014	BN94-04659C	ASSY PCB MAIN;UE40D5700RSXXN	1	SA
...3	CIS2	0202-001522	SOLDER-WIRE FLUX;LFA3-107,D1.2,96.5Sn/3A	0	SNA
...3	HDP01	BN61-06644A	HOLDER-PCB;LC750,NYNOL66,V0	1	SNA
...3	CB01	BN61-07083C	BRACKET-AV;UD5000,PCM,T0.45,BKN-P824,EUR	1	SNA
...3		BN62-00094B	HEAT SINK-CERAMIC;30*30*2.6,Ceramic,T2.6	1	SNA

Level	Loc.	Part Code	Description & Specification	Qty.	SA/SNA
..3		BN97-00688A	ASSY HDCP;BN46-00018A,PS-42V6S,D73A,GENE	1	SNA
...4		BN46-00018A	KEY CODE-CERTIFICATE;(HDCP KEY)PPM42M5S,	1	SNA
..3		BN97-05365A	ASSY DRM-CI PLUS;BN46-00063A,UN4D X5,X6,	1	SNA
...4		BN46-00063A	KEY CODE-CI PLUS;X5/X6,TCTC,SERIAL CODIN	1	SNA
..3		BN97-05566A	ASSY SMD;UE32D5700RSXXN,BN94-04659A	1	SNA
...4		0202-001477	SOLDER-CREAM;LST309-M,D20~45um,96.5Sn/3A	2	SNA
...4	DS01A	0401-001056	DIODE-SWITCHING;MMBD4148SE,100V,200mA,SO	2	SA
...4		0403-001180	DIODE-ZENER;BZX84C6V2,5.8-6.6V,350mW,SOT	1	SA
...4		0403-001783	DIODE-ZENER;BZB84-C6V2,5.8/6.6V,300mW,SO	5	SNA
...4		0403-001785	DIODE-ZENER;NZH5V1B,4.94/5.2V,500mW,SOD-	1	SA
...4		0403-001797	DIODE-ZENER;NZH3V0B,2.85/3.15V,500mW,SOD	1	SNA
...4	D0254	0404-001271	DIODE-SCHOTTKY;SSA34,40V,3000mA,SMA,TP	3	SA
...4	D0254	0404-001404	DIODE-SCHOTTKY;BAT721C,40V,200mA,SOT-23,	3	SA
...4	T0139	0406-001200	DIODE-TVS;RCLAMP0504F,6/-/V,150W,SC-70	2	SA
...4	T0139	0406-001271	DIODE-TVS;RCLAMP0524P,6/-/V,150W,SLP251	1	SNA
...4		0406-001290	DIODE-TVS;3.0SMCJ20A,22.2/-/24.5V,3000W,	2	SNA
...4	SD3	0407-000114	DIODE-SWITCHING;KDS184,80V,100mA,SOT-23,	1	SNA
...4	KQ1	0501-000279	TR-SMALL SIGNAL;KSA1182-Y,PNP,150mW,SOT-	1	SA
...4	Q101	0501-000445	TR-SMALL SIGNAL;KTC3875S-Y,NPN,150mW,SOT	9	SA
...4	CEQ2	0505-000110	FET-SILICON;2N7002,N,60V,115mA,7.5ohm,0.	4	SA
...4	Q409	0505-002572	FET-SILICON;AO4801AL,P,-30V,-5.6A,0.075o	1	SA
...4	IC104	0801-002630	IC-CMOS LOGIC;74AHCT1G08,2-INPUT AND GAT	1	SA
...4	ND51C2	0801-002780	IC-CMOS LOGIC;74LVC1G17,SCHMITT-TRIGGER	1	SA
...4	IC104	0801-003330	IC-CMOS LOGIC;Octal buffer,DQFN,20P,4.5x	2	SA
...4	IC104	0802-001012	IC-CMOS LOGIC;74LCX245,TRANSCEIVER,DQFN,	1	SNA
...4	IC112	1103-001310	IC-EEPROM;24LC02B,256X8BIT,SOIC,8P,3.91X	6	SNA
...4		1103-001487	IC-EEPROM;AT24C256C-SSHL-T,256Kbit,32Kx8	1	SA
...4		1105-002168	IC-DDR3 SDRAM;MT41J128M16HA-15E,2Gbit,16	2	SA
...4		1201-003153	IC-POWER AMP;NTP-7411S,MLF,48P,7x7mm,DUA	1	SA
...4		1201-003183	IC-AUDIO AMP;DRV612,HTSSOP,14P,5x4.4mm,D	1	SA
...4	T0087	1203-001815	IC-POSI.FIXED REG.;78M09,TO-252,3P,PLAST	1	SA
...4	T0087	1203-002835	IC-POSI.FIXED REG.;7805,3P,6.6x6.1mm,PLA	1	SA
...4	T0087	1203-002898	IC-POSI.FIXED REG.;G950T45R,T0-252,3P,6.	1	SA
...4		1203-004364	IC-VOL. DETECTOR;RT9818C-42PV,SOT-23,3P,	1	SA
...4	IC012	1203-005756	IC-POSI.ADJUST REG.;AP7173-SP,SOP-8L-EP,	1	SA
...4		1203-006017	IC-VOL. DETECTOR;RT9824GJ8,TSOT23,8P,2.9	1	SA
...4	T0087	1203-006135	IC-POSI.FIXED REG.;AP1117D-33-GZ-13-89,T	1	SA
...4	T0087	1203-006136	IC-POSI.FIXED REG.;AP1117D-18-GZ-13-89,T	1	SA
...4	IC012	1203-006138	IC-POSI.ADJUST REG.;AP1117DGZ-13-89,TO-2	1	SA
...4		1203-006337	IC-POSI.FIXED REG.;G9091-330T11U,SOT-23-	1	SA

Exploded Views and Parts List

Level	Loc.	Part Code	Description & Specification	Qty.	SA/SNA
...4		1203-006606	IC-DC/DC CONVERTER;AOZ1036PI,SO-8,8P,4.8	1	SNA
...4		1203-006683	IC-DC/DC CONVERTER;A8294SESTR-T,QFN,20P,	1	SNA
...4		1203-006684	IC-DC/DC CONVERTER;TPS54327DDAR,HSOP8,8P	1	SNA
...4		1204-003239	IC-DECODER;SEMS21-LF,HSBGA,606P,27x27mm,	1	SA
...4		1205-003201	IC-BUS SWITCH;TC7WB125FK,SSOP,8P,2x2.3mm	1	SA
...4		1205-003479	IC-SWITCH;TPS2051BDBVR,SOT-23,5P,2.9x1.6	1	SA
...4		1205-003733	IC-SWITCH;AP2191MPG-13,MSOP-8L-EP,8P,2.9	1	SA
...4		1205-003735	IC-SWITCH;AP2151WG-7,SOT25,5P,2.9x1.6mm,	1	SA
...4		1205-003834	IC-ETHERNET CONTROLLER;RTL8201E-VC-GRT,Q	1	SA
...4		1405-001271	VARISTOR;20Vdc,5A,1.0x0.5x0.6mm,TP	8	SA
...4	MR604	2007-000137	R-CHIP;2Kohm,5%,1/16W,TP,1005	9	SNA
...4	R105	2007-000138	R-CHIP;100ohm,5%,1/16W,TP,1005	27	SA
...4	AR49	2007-000140	R-CHIP;1Kohm,5%,1/16W,TP,1005	3	SNA
...4	MR306	2007-000141	R-CHIP;2.2Kohm,5%,1/16W,TP,1005	2	SNA
...4	AVR73	2007-000142	R-CHIP;2.7Kohm,5%,1/16W,TP,1005	1	SNA
...4	R319	2007-000143	R-CHIP;4.7Kohm,5%,1/16W,TP,1005	49	SNA
...4	R104	2007-000148	R-CHIP;10Kohm,5%,1/16W,TP,1005	51	SA
...4	MR36	2007-000153	R-CHIP;22Kohm,5%,1/16W,TP,1005	6	SNA
...4	AR43	2007-000155	R-CHIP;27Kohm,5%,1/16W,TP,1005	2	SNA
...4	RZ07	2007-000156	R-CHIP;30Kohm,5%,1/16W,TP,1005	2	SA
...4	MR13	2007-000157	R-CHIP;47Kohm,5%,1/16W,TP,1005	11	SNA
...4		2007-000160	R-CHIP;68Kohm,5%,1/16W,TP,1005	2	SA
...4	DR39	2007-000162	R-CHIP;100Kohm,5%,1/16W,TP,1005	3	SNA
...4	MR16	2007-000168	R-CHIP;470Kohm,5%,1/16W,TP,1005	1	SNA
...4	R509	2007-000170	R-CHIP;1Mohm,5%,1/16W,TP,1005	1	SNA
...4	R111	2007-000171	R-CHIP;0ohm,5%,1/16W,TP,1005	2	SNA
...4	HDR17	2007-000172	R-CHIP;10ohm,5%,1/16W,TP,1005	4	SNA
...4	R338	2007-000173	R-CHIP;22ohm,5%,1/16W,TP,1005	11	SNA
...4	UR23	2007-000174	R-CHIP;47ohm,5%,1/16W,TP,1005	2	SNA
...4	R726	2007-000695	R-CHIP;3.3ohm,5%,1/10W,TP,1608	4	SNA
...4	R124	2007-000775	R-CHIP;33Kohm,5%,1/16W,TP,1005	2	SNA
...4	R2007	2007-000803	R-CHIP;36Kohm,1%,1/10W,TP,1608	1	SA
...4	S1G0843	2007-001125	R-CHIP;68Kohm,1%,1/10W,TP,1608	1	SA
...4		2007-001168	R-CHIP;75ohm,5%,1/4W,TP,3216	2	SA
...4		2007-001285	R-CHIP;5.6ohm,5%,1/16W,TP,1005	4	SA
...4	OTR1	2007-001292	R-CHIP;33ohm,5%,1/16W,TP,1005	24	SNA
...4	DR43	2007-001298	R-CHIP;51ohm,5%,1/16W,TP,1005	2	SNA
...4	DR1	2007-001301	R-CHIP;68ohm,5%,1/16W,TP,1005	10	SA
...4	R16	2007-001313	R-CHIP;330ohm,5%,1/16W,TP,1005	2	SNA
...4	R326	2007-001325	R-CHIP;3.3Kohm,5%,1/16W,TP,1005	1	SNA

Level	Loc.	Part Code	Description & Specification	Qty.	SA/SNA
...4		2007-001333	R-CHIP;18Kohm,5%,1/16W,TP,1005	6	SNA
...4	PR24	2007-002970	R-CHIP;56ohm,5%,1/16W,TP,1005	4	SA
...4	HDR8	2007-007095	R-CHIP;390ohm,5%,1/16W,TP,1005	1	SA
...4		2007-007138	R-CHIP;27Kohm,1%,1/16W,TP,1005	1	SNA
...4	DR4	2007-007142	R-CHIP;10Kohm,1%,1/16W,TP,1005	1	SNA
...4		2007-007156	R-CHIP;1ohm,5%,1/16W,TP,1005	14	SNA
...4		2007-007311	R-CHIP;22Kohm,1%,1/16W,TP,1005	1	SA
...4		2007-007318	R-CHIP;1Kohm,1%,1/16W,TP,1005	26	SNA
...4		2007-007463	R-CHIP;1.1Kohm,1%,1/16W,TP,1005	1	SA
...4		2007-007517	R-CHIP;240ohm,1%,1/16W,TP,1005	2	SNA
...4		2007-007698	R-CHIP;5.1Kohm,1%,1/16W,TP,1005	2	SNA
...4		2007-007766	R-CHIP;2Kohm,1%,1/16W,TP,1005	5	SNA
...4	MR11	2007-008015	R-CHIP;75ohm,1%,1/16W,TP,1005	10	SNA
...4		2007-008117	R-CHIP;2.7Kohm,1%,1/16W,TP,1005	1	SA
...4		2007-008649	R-CHIP;220ohm,1%,1/16W,TP,1005	1	SNA
...4	DRP29	2011-000515	R-NETWORK;4.7Kohm,5%,1/16W,L,CHIP,8P,TP,	1	SA
...4	ZRN10	2011-001261	R-NETWORK;33ohm,5%,1/16W,L,CHIP,8P,TP,2.	7	SA
...4	DAR09	2011-001262	R-NETWORK;22ohm,5%,1/16W,L,CHIP,8P,TP,2.	34	SA
...4		2011-001264	R-NETWORK;10ohm,5%,1/16W,L,CHIP,8P,TP,2.	8	SNA
...4	HRP2	2011-001344	R-NETWORK;100ohm,5%,1/16W,L,CHIP,8P,TP,2	2	SA
...4		2011-001449	R-NETWORK;22ohm,5%,1/16W,L,4P,TP,1010	7	SA
...4		2011-001587	R-NETWORK;100ohm,5%,1/16W,L,CHIP-V,4P,TP	1	SNA
...4	PC43	2203-000233	C-CER,CHIP;0.1nF,5%,50V,C0G,TP,1005	7	SA
...4	DC1	2203-000386	C-CER,CHIP;0.015nF,5%,50V,C0G,TP,1005	2	SA
...4	C254	2203-000438	C-CER,CHIP;1nF,10%,50V,X7R,TP,1005	10	SA
...4	C507	2203-000489	C-CER,CHIP;2.2nF,10%,50V,X7R,TP,1005	4	SA
...4	AD480	2203-000530	C-CER,CHIP;2.7nF,10%,50V,X7R,TP,1005,-	1	SNA
...4	V1233	2203-000575	C-CER,CHIP;220nF,10%,25V,X7R,TP,2012	4	SNA
...4	AD480	2203-000714	C-CER,CHIP;3.3nF,10%,50V,X7R,TP,1005,-	6	SA
...4	DC25	2203-000812	C-CER,CHIP;0.033nF,5%,50V,C0G,TP,1005	3	SA
...4	AD480	2203-000995	C-CER,CHIP;0.047nF,5%,50V,C0G,TP,1005	3	SA
...4	AD480	2203-001412	C-CER,CHIP;0.03nF,5%,50V,NP0,TP,1005	5	SNA
...4	AD480	2203-001851	C-CER,CHIP;0.016nF,5%,50V,NP0,TP,1608	2	SNA
...4	AD480	2203-002285	C-CER,CHIP;10nF,10%,50V,X7R,TP,1005	14	SNA
...4	AD480	2203-002525	C-CER,CHIP;0.56nF,10%,50V,X7R,TP,1005	7	SNA
...4	AC2	2203-002711	C-CER,CHIP;100nF,10%,25V,X7R,TP,1608	4	SA
...4	C151	2203-003039	C-CER,CHIP;0.008nF,0.25pF,50V,C0G,TP,100	1	SNA
...4	AAC1	2203-005249	C-CER,CHIP;100nF,10%,50V,X7R,TP,1608	9	SNA
...4	AD480	2203-005393	C-CER,CHIP;0.005nF,0.1pF,50V,NP0,TP,1005	1	SNA
...4	AD480	2203-005968	C-CER,CHIP;4.7nF,10%,50V,X7R,TP,1005,0.5	1	SNA

Exploded Views and Parts List

Level	Loc.	Part Code	Description & Specification	Qty.	SA/SNA
...4	VC37	2203-006048	C-CER,CHIP;100nF,10%,10V,X7R,TP,1005	114	SA
...4	AD480	2203-006126	C-CER,CHIP;47nF,10%,16V,X7R,TP,1005	21	SNA
...4	JC10	2203-006324	C-CER,CHIP;2200nF,10%,10V,X5R,1608	8	SA
...4	AD480	2203-006336	C-CER,CHIP;10000nF,10%,25V,X5R,TP,3216	1	SA
...4	C802	2203-006348	C-CER,CHIP;1000nF,10%,25V,X5R,TP,1608	2	SA
...4	C125	2203-006361	C-CER,CHIP;10000nF,10%,10V,X5R,TP,2012	20	SC
...4	C234	2203-006378	C-CER,CHIP;4700nF,10%,6.3V,X5R,TP,1608	1	SNA
...4	HE4	2203-006474	C-CER,CHIP;22000nF,20%,6.3V,X5R,2012	13	SA
...4	HDC11	2203-006562	C-CER,CHIP;1000nF,10%,10V,X5R,TP,1005	15	SNA
...4	AD480	2203-006824	C-CER,CHIP;4700nF,10%,10V,X5R,1608	1	SNA
...4	C23	2203-006890	C-CER,CHIP;10000nF,20%,6.3V,X5R,1608	34	SNA
...4	AD480	2203-006992	C-CER,CHIP;0.33nF,5%,50V,C0G,TP,1005	2	SNA
...4	AD480	2203-007176	C-CER,CHIP;10000nF,10%,16V,X5R,TP,2012	4	SNA
...4	AD480	2203-007230	C-CER,CHIP;47000nF,20%,6.3V,X5R,TP,2012,	2	SA
...4		2402-001403	C-AL,SMD;100uF,20%,35V,TP,10.3X10.3	2	SNA
...4	S1Q036	12703-000408	INDUCTOR-SMD;3.3uH,20%,3225	1	SA
...4	T0052	2703-002238	INDUCTOR-SMD;1uH,5%,2012	2	SNA
...4	T0052	2703-003790	INDUCTOR-SMD;4.7uH,20%,8080	2	SA
...4		2703-003879	INDUCTOR-SMD;33uH,20%,10.0mmX10.0mm	1	SA
...4		2703-003930	INDUCTOR-SMD;4.7uH,20%,5050	4	SA
...4	X202	2801-003326	CRYSTAL-SMD;24MHz,30ppm,28-ABX,20pF,50oh	1	SA
...4	X202	2801-003948	CRYSTAL-SMD;12MHz,30ppm,28-AAN,12pF,60oh	1	SA
...4	X202	2801-004734	CRYSTAL-SMD;25.000000MHz,20ppm,28-AAN,12	1	SA
...4	F103	2901-001506	FILTER-EMI SMD;5V,0.13A,0pF,2x1x0.5mm,TP	2	SA
...4	DR32	3301-000314	BEAD-SMD;120ohm,1.6x0.8x0.8mm,-,-,-	7	SNA
...4	T0568	3301-001526	BEAD-SMD;10ohm,1.6x0.8x0.8mm,1000mA,TP,,	3	SNA
...4	T0568	3301-002039	BEAD-SMD;26ohm,1608,TP	40	SA
...4	CN401	3701-001724	CONNECTOR-DSUB;15P,3ROW,FEMALE,ANGLE,NI	1	SA
...4	CN601	3701-001736	CONNECTOR-HDMI;19P,2ROW,FEMALE,SMD-A	4	SA
...4	CN303	3707-001104	CONNECTOR-OPTICAL;SMD-A(Ultra Slim),SPDI	1	SA
...4		3710-002276	SOCKET-INTERFACE;24P,1R,0.5mm,SMD-A,AU,B	1	SA
...4		3710-003374	CONNECTOR-SOCKET;64P,2R,0.5mm,ANGLE,NI+S	1	SA
...4	HB01A	3711-005601	HEADER-BOARD TO CABLE;BOX,8P,1R,2mm,SMD-	1	SA
...4	HB01A	3711-005925	HEADER-BOARD TO CABLE;BOX,51P,1R,0.5mm,S	1	SA
...4	HB01A	3711-007319	HEADER-BOARD TO CABLE;SMD,4P,1R,2.50mm,S	1	SA
...4		3711-007569	CONNECTOR-HEADER;BOX,14P,2R,2.0mm,DIP,SN	1	SA
...4	CN1501	3722-003044	JACK-USB;4P/1C,NI,BLK,SMD-A,A-TYPE	2	SA
...4	CN302	3722-003158	JACK-PHONE;1/7P,NI,BLK,ANGLE	2	SA
...4	CN1701	3722-003199	JACK-MODULAR;8P/8C,ANGLE,AU,1P	1	SA
...4	CN501	3722-003207	JACK-PHONE;2P/9C,AU,LIMEGRN,SMD-A(DIP)	1	SA

Level	Loc.	Part Code	Description & Specification	Qty.	SA/SNA
...4	ET01	BN40-00217A	TUNER;DNSS243VH142A,DNSS243VH142A,DVB-TC	1	SA
...4		BN41-01660A	PCB MAIN;X6 DVB,FR-4,4,1.2T,192*214	1	SNA
...4		BN97-05301A	ASSY MICOM;T-MSTDEUS-1001,2011.02.12	1	SNA
....5		1107-001981	IC-NAND FLASH;K9GAG08U0E-SCB0,16Gbit,2Gx	1	SA
...4		BN97-05302A	ASSY MICOM;T-MST5DEUC-XXXX,U66A,KFG1GN6W	1	SNA
....5		1107-001990	IC-NAND FLASH;KFG1GN6W2D-HIB6,1Gbit,64Mx	1	SA
...4		BN97-05303A	ASSY MICOM;SubMicomEU_XXXX,U66A,61P805,0	1	SNA
....5		0903-001718	IC-MICROCONTROLLER;61P805-RG480WT,LQFP,4	1	SNA
1		BN92-07594W	ASSY BOX;UD5500 40	1	SNA
.2		BH68-00662A	LABEL BOX-00;ALL MODEL,MOJO 90G,60,110,W	1	SNA
.2		BN69-05997P	BOX-SET;40UD5700,CB,A-01,DW2,ECT50,YEL,W	1	SNA
1		BN92-07606A	ASSY P/MATERIAL;UD5000 40	1	SNA
.2		6902-000379	BAG AIR;LDPE,T0.2,W1000,L1800,TRP,1260.0	1	SNA
.2		6902-001114	BAG ROLL;HDPE/HDPE/NITRON,T0.5,W900,L175	2	SNA
.2	M040	6922-000003	BAND PP;PP,T0.8,W18,L1650M,TRP,DA69-9014	1	SNA
.2		BN68-02422B	LABEL-WARNING SHIPPING;ALL MODEL,A/P 100	1	SNA
.2		BN69-00257B	PACKING-PAD;PAPER,CB-SW4,1130,820,YEL,28	1	SNA
.2		BN69-00257P	PACKING-SHEET PALLET;-CB,PEP110/HD,-,12	1	SNA
.2		BN69-03982E	PAD PACKING-EDGE;LB6T,PAPER,8,120,2060,Y	1	SNA
.2		BN69-05184M	PALLET;40D5000,WOOD,1180,1150,135,14000,	1	SNA
.2		BN69-05418A	PACKING-BAG WRAPPING;-LDPE,-,0,019,500,	2	SNA
.2		BN69-05690A	CUSHION-SET;UD6100 40",EPS,EXPORT, DENSI	1	SNA
.2		BN69-05788A	CUSHION-FRONT;40UD7000,EPS	1	SNA
.2		BN74-00008D	TAPE-OPP MASKING;OPP,T0.05,W75,L800M,CLR	3	SNA
1		BN92-07912A	ASSY LABEL;UE32D5500RWXXC	1	SNA
.2	T0527	BP68-00052B	LABEL-00,RATING;CCTV,TETRON PAPER,T0.05,	1	SNA
1	ACCE1	BN92-08218A	ASSY ACCESSORY;UE32D5700RSXXN	1	SNA
.2	ACCE2	BN96-17615F	ASSY ACCESSORY-CABEL;UE32D5500RWX*	1	SNA
..3		3709-001663	CONNECTOR-CARD EDGE;64P,0.5mm,MALE,PCMC1	1	SA
..3	EC11	3903-000525	CBF-POWER CORD;DT,CEE,LP-21L,250V,2.5A,B	1	SA
..3	T0120	4301-000121	BATTERY-MN;1.5V,R03,10.5x44.5m,HOLDER,7.	2	SNA
..3		6902-001340	BAG PE;LDPE,T0.05,W250,L350,TRP,RECYCLE	1	SNA
..3	REMO2	AA59-00508A	REMOCON;TM1050,49,3V,EUROPE iDTV,5720,57	1	SA
..3	M0114	BN39-01154F	CBF SIGNAL;UE40B7000WWXXC,24P/20P,30AWG,	1	SA
..3	EC03	BN39-01154W	CBF SIGNAL;COMPONENT GENDER / UD8000,2P,	1	SA
..3		BN61-05491A	HOLDER-WIRE STAND;UB7000 46inch,NYRON	1	SNA
..3	M9889	BN63-01798B	CLOTH-CLEAN;cloth,180,200,sea blue,ToC	1	SNA
..3	EH03A	BN96-18153A	ASSY HOLDER P-RING;11 LED-TV	1	SNA
...4	AH365	BN61-07295A	HOLDER-RING;40UD5500,ABS,BK0007,HB	4	SNA
...4		BN69-04419E	PACKING-BAG PE;LB650,LDPE,70,90,6003-000	1	SNA

Exploded Views and Parts List

Level	Loc.	Part Code	Description & Specification	Qty.	SA/SNA
.2	ACCE4	BN96-18818A	ASSY ACCESSORY-MANUAL;UE32D5700RSXXN	1	SNA
..3		6902-000476	BAG PE;LDPE,T0.03,W250,L350,TRP,Recycle,	1	SNA
..3	T0527	BN68-00513A	LABEL-E,PASS;ALL MODEL,YUPO(110G),50X15,	1	SNA
..3		BN68-00514K	MANUAL FLYER-WARRANTY CARD;comm,Samsung,	1	SNA
..3		BN68-03019A	LEAFLET-SAFETY GUIDE;ALL,SAMSUNG,28LENGS	1	SNA
..3		BN68-03506F	MANUAL USERS;UD5700,SAMSUNG,Eng/Fre/Ger/	1	SNA