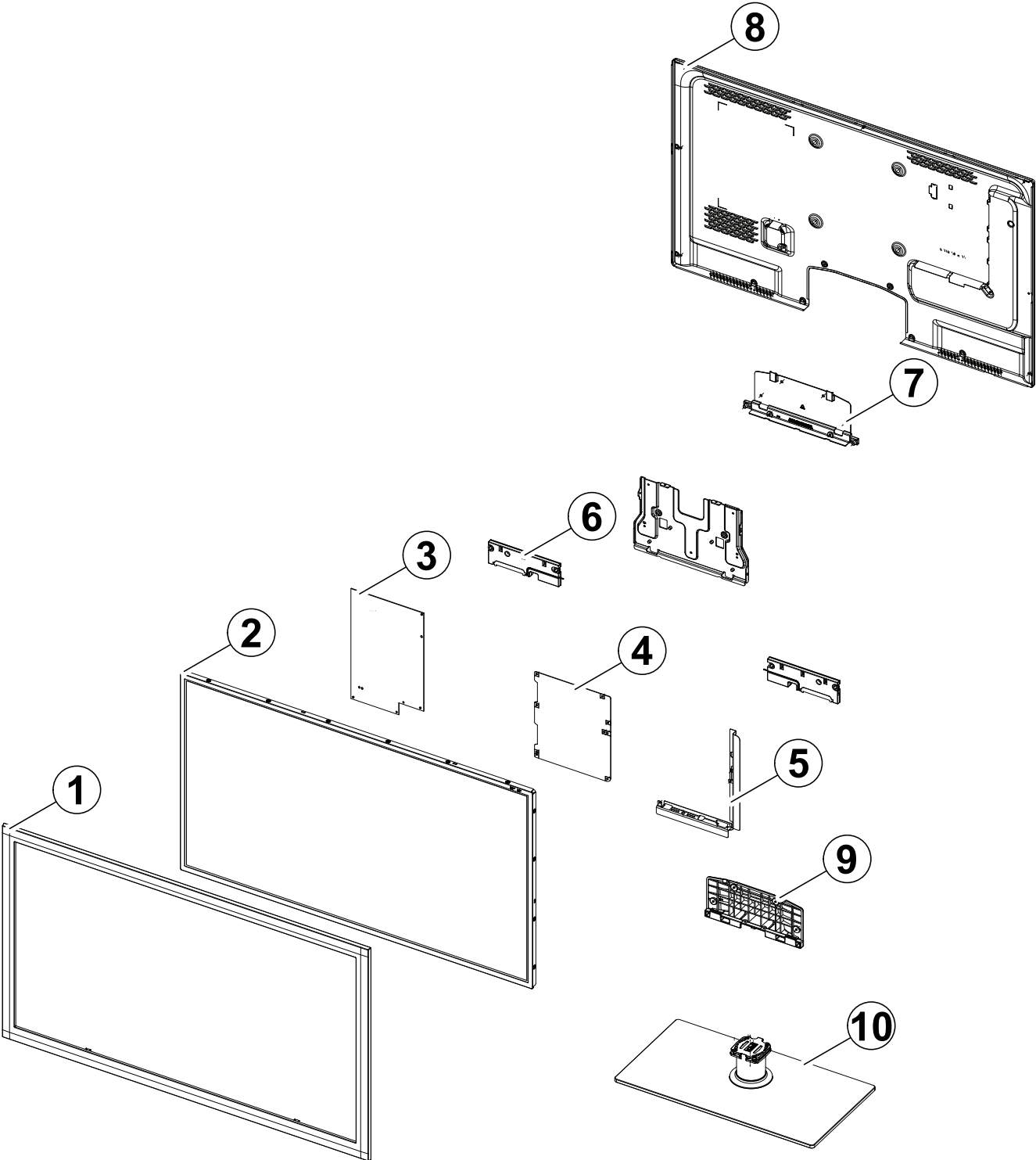


# 1. Exploded View & Part List

## Exploded View



**Parts List**

No.	Parent	Lvl.	Loc.	Material Code	Description & Specification	SNA	Qty.
1	BN90-03207A	2	F001A	BN96-16906A	ASSY COVER P-FRONT; UD5000 40,EO,PC(CLR)+	SA	1
2	BN91-06687A	2	PANEL	BN95-00434A	PRODUCT LCD; LTJ400HM03-V,1920*1080	SA	1
3	BN91-06687A	2	P001A	BN44-00422B	DC VSS-LED TV PD BD; PD46A0_BDY,PD46A0_BD	SA	1
4	BN91-06538T	2	M0014	BN94-04466T	ASSY PCB MAIN; UE37D5000PKXXU	SA	1
5	BN94-04466T	3	CB01	BN61-07083A	BRACKET-AV; UD5000,PCM,T0.45,BKN-P824,EUR	SNA	1
6	BN91-06536C	2	SP01A	BN96-16796A	ASSY SPEAKER P; 6ohm,4pin,10W,Enclosure t	SA	1
7	BN91-06536C	2	RB01	BN63-07807C	COVER-BOTTOM; UD5000 37,NH HIPS,V1,BK0020	SNA	1
8	BN90-03223J	2	R001A	BN96-16841J	ASSY COVER P-REAR; UD5000,40,EO,PCM,T0.45	SA	1
9	BN90-03129C	2	SG03A	BN96-16722A	ASSY STAND P-GUIDE; UD5000-6000,W/W,PC,G/	SA	1
10	BN90-03129C	2	SB04A	BN96-16771A	ASSY STAND P-BASE; LD550,37/40,TEMPERED G	SA	1

## 2. Electrical Parts List

Level	Loc.	Part Code	Description & Specification	Qty.	SA/SNA
			<b>UE40D5000PWXZG (H303)</b>		
1	S001A	BN90-03129C	ASSY STAND;UD5000 37/40,BLACK,W/W	1	SNA
.2	SG03A	BN96-16722A	ASSY STAND P-GUIDE;UD5000-6000,W/W,PC,G/	1	SA
..3	T0524	6902-001063	BAG PE;LDPE,T0.05,W180,L350,TRP,RECYCLE	1	SNA
..3	SG03	BN61-07057A	GUIDE-STAND;UD5000 37,PC+G/F 20%,V2,BK00	1	SNA
..3		BN68-03388C	MANUAL FLYER-02,STAND GUIDE;U5000(32~55)	1	SNA
..3		BN96-18013E	ASSY ACCESSORY-SCREW;6003-001782,4EA,ALL	1	SNA
...4	SCREW	6003-001782	SCREW-TAPTYPE;BH,+,B,M4,L12,ZPC(BLK),SWR	4	SA
..4		BN69-05418B	PACKING-BAG SCREW;BN96-18013E,-,GREEN,T0	1	SNA
..3		BN96-18013F	ASSY ACCESSORY-SCREW;6001-002621,4EA,ALL	1	SNA
...4		6001-002621	SCREW-MACHINE;BH,+,M4,L8,ZPC(BLK),SWRCH1	4	SA
...4		BN69-05418C	PACKING-BAG SCREW;BN96-18013F,-,RED,T0,0	1	SNA
.2	SB04A	BN96-16771A	ASSY STAND P-BASE;LD550,37/40,TEMPERED G	1	SA
..3	SCREW	6003-001374	SCREW-TAPTYPE;FH,+,B,M4,L12,NI PLT,SWRCH	5	SA
..3	SCREW	6003-001782	SCREW-TAPTYPE;BH,+,B,M4,L12,ZPC(BLK),SWR	2	SA
..3		BN61-04692A	BOSS-PRIMER;#94,clear,35cps	0	SNA
..3		BN61-04731D	BOSS-TAPE;AMBER,ACRYL,T1.1,W20.0mm,WHITE	0	SNA
..3		BN61-05826A	BOSS-BOND;#760,Poly urethane,Black	2	SNA
..3	SG01	BN61-06998A	GUIDE-STAND NECK;LD550,46,PETG,V2,TP0003	1	SNA
...4		0103-007257	RESIN-PETG;ECOZEN-SE,NP01,TP0003,3.2 V2,	125	SNA
...4		BN61-06079B	GUIDE-NECK-INSERT;LC650,40,PETG HB,TP000	1	SNA
..3		BN61-07119A	HOLDER-NECK FRONT;LD550,46,PC+G/F 20%,BK	1	SNA
..3		BN61-07121A	BRACKET-STAND BOTTOM;LD550 46",SECC,T2.0	1	SNA
..3		BN61-07122A	HOLDER-NECK REAR;LD550,46,PC+G/F 20%,BK0	1	SNA
...4		0103-007285	RESIN-PC;MW32020GFU,BK0007,2.0 V2,PC/GF2	20	SNA
..3		BN61-07244A	HOLDER-SWIVEL RING;LD550,40,POM,60pie,NC	1	SNA
..3	CCM1	BN63-04755A	COVER-SHEET;AMBER,PE,T0.05,W150mm,200M,6	1	SNA
..3	FD01	BN63-07892A	COVER-DECORATION;LD550,37/40/46,ABS+PMMA	1	SNA
...4		0103-005096	RESIN-ABS;HB,ABS+PMMA	13	SNA
..3		BN63-08122A	COVER-STAND GLASS;UD6000,37/40,Glass,T8.	1	SNA
..3	T0527	BN68-01648B	LABEL WARNING;WW,PET,T0.05,40,25,EXPORT	1	SNA
..3	M0126	BN73-00215A	RUBBER-FOOT;40LB650,RUBBER,15*25,T4,BLK	4	SNA
..3		BN73-00300A	RUBBER-FOOT;LC650 40,RUBBER,27*27,BLACK	4	SNA
..3		BN74-00031A	GREASE;kanto-kasei FL-955,grease,wht	0	SNA
1		BN90-03207A	ASSY COVER FRONT;UD5000 40	1	SNA
.2	F001A	BN96-16906A	ASSY COVER P-FRONT;UD5000 40,EO,PC(CLR)+	1	SA
..3	XT01	0201-001578	ADHESIVE-HM;HM-555,WHT,4,000 Cps	0	SNA
..3	T0069	BN60-00051A	SPACER-FELT;FELT,20.0,0.5,12.0	4	SNA

Exploded Views and Parts List

Level	Loc.	Part Code	Description & Specification	Qty.	SA/SNA
...3		BN60-00162C	SPACER-FOAM;FOAM,50000mm,Dark Gray,0.5T,	1	SNA
...3		BN60-00162L	SPACER-FOAM;FOAM,50000mm,Dark Gray,0.5T,	3	SNA
...3	CB11P	BN61-07248A	BRACKET-SUPPORT PCB;LD550,SK-5,T0.5,Plat	1	SA
...3	CCM1	BN63-05199B	COVER-SHEET;AMBER,PE,T0.08,W65mm,200M,CL	1	SNA
...3	CCM1	BN63-05199C	COVER-SHEET;AMBER,PE,T0.08,W55mm,200M,CL	2	SNA
...3	F001	BN63-07872A	COVER-FRONT;UD5000 40,EO,PC(CLR)+PC(Char	1	SNA
...4		0103-007268	RESIN-PC;TP0010,2.0V0,NH PC,NH PC 2.0 V2	360	SNA
...4		0103-007269	RESIN-PC;GY0132,2.0V0,NH PC,NH PC 2.0 V2	260	SNA
...4		BN68-00513D	LABEL-RESIN;resin,-,art paper,-,10,25,-,	1	SNA
...3		BN74-00052A	TAPE-PAPER;LB530,Crepe Paper,0.17mm, 10m	0	SNA
...3	FB21A	BN96-16729K	ASSY BOARD P-TOUCH FUNCTION & IR;UN40D6000	1	SA
1	R001A	BN90-03223J	ASSY COVER REAR;UD5000 40	1	SNA
.2		6001-002671	SCREW-MACHINE;BH,+,M3,L6,ZPC(BLK),SWRCH1	6	SA
.2	R001A	BN96-16841J	ASSY COVER P-REAR;UD5000,40,EO,PCM,T0.45	1	SA
...3		BN60-00162Y	SPACER-FOAM;FOAM,50000mm,Dark Gray,0.35T	1	SNA
...3	R001	BN63-07750B	COVER-REAR;UD6100 40,PCM,T0.45,BKN-P824	1	SNA
...3		BN63-08087B	SHEET-INSULATOR;UD6050,PC SHEET,T0.43,19	1	SNA
...3		BN68-00513E	LABEL-AMS;ams,-,art paper,-,10,38,-,whit	1	SNA
...3		BN68-03297D	LABEL-TERMINAL BOTTOM;LD5000/5500,EO,PET	1	SNA
...3		BN68-03298B	LABEL-TERMINAL SIDE;LD5000/5500,UO,PET,T	1	SNA
...3		BN68-03518A	LABEL-STICKER;WW,ALL,60.5,68.8,LABEL-CI	1	SNA
1		BN91-06536C	ASSY SHIELD;UE40D5000PWXXC	1	SNA
.2	CIS1	0203-001586	TAPE-FILAMENT;#893,0.15,30,55,WHT,FILAME	0	SNA
.2	SCREW	6003-001782	SCREW-TAPTYPE;BH,+,B,M4,L12,ZPC(BLK),SWR	2	SA
.2	EC13	BN39-01455B	LEAD CONNECTOR;UE40D5000,Lead Connector	1	SA
.2	RB01	BN63-07807C	COVER-BOTTOM;UD5000 37,NH HIPS,V1,BK0020	1	SNA
...3		0103-007489	RESIN-HIPS;FT875,BK,BK0020,V1,HIPS	70	SNA
...3		BN68-00513D	LABEL-RESIN;resin,-,art paper,-,10,25,-,	1	SNA
.2	SP01A	BN96-16796A	ASSY SPEAKER P;6ohm,4pin,10W,Enclosure t	1	SA
.2	FL06	BN96-17116F	ASSY CABLE P-FFC;UE37D5000,FFC,345mm,51P	1	SA
1	M0017	BN91-06538T	ASSY CHASSIS;UE37D5000PKXXU	1	SNA
.2	M0014	BN94-04466T	ASSY PCB MAIN;UE37D5000PKXXU	1	SA
...3		0202-001608	SOLDER-WIRE FLUX;LFC7-107,D0.8,99.3Sn/0.	0	SNA
...3	HDP01	BN61-06644A	HOLDER-PCB;LC750,NYNOL66,V0	1	SA
...3	CB01	BN61-07083A	BRACKET-AV;UD5000,PCM,T0.45,BKN-P824,EUR	1	SNA
...3		BN62-00094B	HEAT SINK-CERAMIC;30*30*2.6,Ceramic,T2.6	1	SNA
...3		BN97-00688A	ASSY HDCP;BN46-00018A,PS-42V6S,D73A,GENE	1	SNA
...4		BN46-00018A	KEY CODE-CERTIFICATE;(HDCP KEY)PPM42M5S,	1	SNA
...3		BN97-05237E	ASSY SMD;UE32D5000PKXXU,BN94-04466S	1	SNA
...4		0202-001477	SOLDER-CREAM;LST309-M,D20~45um,96.5Sn/3A	2	SNA

Level	Loc.	Part Code	Description & Specification	Qty.	SA/SNA
...4	DS01A	0401-001056	DIODE-SWITCHING;MMBD4148SE,100V,200mA,SO	3	SA
...4		0403-001180	DIODE-ZENER;BZX84C6V2,5.8-6.6V,350mW,SOT	1	SA
...4		0403-001783	DIODE-ZENER;BZB84-C6V2,5.8/6.6V,300mW,SO	5	SNA
...4		0403-001785	DIODE-ZENER;NZH5V1B,4.94/5.2V,500mW,SOD-	1	SA
...4		0403-001797	DIODE-ZENER;NZH3V0B,2.85/3.15V,500mW,SOD	1	SNA
...4	D0254	0404-001404	DIODE-SCHOTTKY;BAT721C,40V,200mA,SOT-23,	3	SA
...4	T0139	0406-001200	DIODE-TVS;RCLAMP0504F,6/-/V,150W,SC-70	2	SA
...4	T0139	0406-001271	DIODE-TVS;RCLAMP0524P,6/-/V,150W,SLP251	1	SNA
...4	SD3	0407-000114	DIODE-SWITCHING;KDS184,80V,100mA,SOT-23,	1	SNA
...4	KQ1	0501-000279	TR-SMALL SIGNAL;KSA1182-Y,PNP,150mW,SOT-	1	SA
...4	Q101	0501-000445	TR-SMALL SIGNAL;KTC3875S-Y,NPN,150mW,SOT	10	SA
...4	CEQ2	0505-000110	FET-SILICON;2N7002,N,60V,115mA,7.5ohm,0.	4	SA
...4	Q409	0505-002572	FET-SILICON;AO4801AL,P,-30V,-5.6A,0.075o	1	SA
...4	IC104	0801-002630	IC-CMOS LOGIC;74AHCT1G08,2-INPUT AND GAT	1	SA
...4	ND51C2	0801-002780	IC-CMOS LOGIC;74LVC1G17,SCHMITT-TRIGGER	1	SA
...4	IC104	0801-003330	IC-CMOS LOGIC;Octal buffer,DQFN,20P,4.5x	2	SA
...4	IC104	0802-001012	IC-CMOS LOGIC;74LCX245,TRANSCEIVER,DQFN,	1	SNA
...4	IC112	1103-001310	IC-EEPROM;24LC02B,256X8BIT,SOIC,8P,3.91X	6	SNA
...4		1103-001487	IC-EEPROM;AT24C256C-SSHL-T,256Kbit,32Kx8	1	SA
...4		1105-002194	IC-DDR3 SDRAM;K4B1G1646G-BCH9,DDR3 SDRAM	2	SA
...4		1201-003153	IC-POWER AMP;NTP-7411S,MLF,48P,7x7mm,DUA	1	SA
...4		1201-003183	IC-AUDIO AMP;DRV612,HTSSOP,14P,5x4.4mm,D	1	SA
...4	T0087	1203-001815	IC-POSIFIXED REG.;78M09,TO-252,3P,PLAST	1	SA
...4	T0087	1203-002835	IC-POSIFIXED REG.;7805,3P,6.6x6.1mm,PLA	1	SA
...4	T0087	1203-002898	IC-POSIFIXED REG.;G950T45R,TO-252,3P,6.	1	SA
...4		1203-004364	IC-VOL. DETECTOR;RT9818C-42PV,SOT-23,3P,	1	SA
...4		1203-006017	IC-VOL. DETECTOR;RT9824GJ8,TSOT23,8P,2.9	1	SA
...4	IC012	1203-006138	IC-POSIAJUST REG.;AP1117DGZ-13-89,TO-2	1	SA
...4		1203-006142	IC-DC/DC CONVERTER;BD8924G,5P,2.9x1.6x1.	1	SA
...4		1203-006337	IC-POSIFIXED REG.;G9091-330T11U,SOT-23-	1	SA
...4		1203-006619	IC-DC/DC CONVERTER;AOX1033AI,SO-8,8P,4.9	1	SA
...4		1203-006684	IC-DC/DC CONVERTER;TPS54327DDAR,HSOP8,8P	1	SNA
...4		1204-003240	IC-DECODER;SEMS20-LF,HSBGA,572P,20x20mm,	1	SNA
...4		1205-003201	IC-BUS SWITCH;TC7WB125FK,SSOP,8P,2x2.3mm	1	SA
...4		1205-003479	IC-SWITCH;TPS2051BDBVR,SOT-23,5P,2.9x1.6	1	SA
...4		1205-003733	IC-SWITCH;AP2191MPG-13,MSOP-8L-EP,8P,2.9	1	SA
...4		1205-003735	IC-SWITCH;AP2151WG-7,SOT25,5P,2.9x1.6mm,	1	SA
...4		1205-003834	IC-ETHERNET CONTROLLER;RTL8201E-VC-GRT,Q	1	SA
...4		1405-001271	VARISTOR;20Vdc,5A,1.0x0.5x0.6mm,TP	8	SA
...4	MR604	2007-000137	R-CHIP;2Kohm,5%,1/16W,TP,1005	9	SNA

Exploded Views and Parts List

Level	Loc.	Part Code	Description & Specification	Qty.	SA/SNA
...4	R105	2007-000138	R-CHIP;100ohm,5%,1/16W,TP,1005	28	SA
...4	AR49	2007-000140	R-CHIP;1Kohm,5%,1/16W,TP,1005	2	SNA
...4	MR306	2007-000141	R-CHIP;2.2Kohm,5%,1/16W,TP,1005	2	SNA
...4	AVR73	2007-000142	R-CHIP;2.7Kohm,5%,1/16W,TP,1005	1	SNA
...4	R319	2007-000143	R-CHIP;4.7Kohm,5%,1/16W,TP,1005	48	SNA
...4	R104	2007-000148	R-CHIP;10Kohm,5%,1/16W,TP,1005	51	SA
...4	MR36	2007-000153	R-CHIP;22Kohm,5%,1/16W,TP,1005	6	SNA
...4	AR43	2007-000155	R-CHIP;27Kohm,5%,1/16W,TP,1005	1	SNA
...4	RZ07	2007-000156	R-CHIP;30Kohm,5%,1/16W,TP,1005	3	SA
...4	MR13	2007-000157	R-CHIP;47Kohm,5%,1/16W,TP,1005	11	SNA
...4		2007-000160	R-CHIP;68Kohm,5%,1/16W,TP,1005	2	SA
...4	DR39	2007-000162	R-CHIP;100Kohm,5%,1/16W,TP,1005	5	SNA
...4	MR16	2007-000168	R-CHIP;470Kohm,5%,1/16W,TP,1005	1	SNA
...4	R509	2007-000170	R-CHIP;1Mohm,5%,1/16W,TP,1005	1	SNA
...4	R111	2007-000171	R-CHIP;0ohm,5%,1/16W,TP,1005	2	SNA
...4	HDR17	2007-000172	R-CHIP;10ohm,5%,1/16W,TP,1005	4	SNA
...4	R338	2007-000173	R-CHIP;22ohm,5%,1/16W,TP,1005	10	SNA
...4	UR23	2007-000174	R-CHIP;47ohm,5%,1/16W,TP,1005	2	SNA
...4	MR17	2007-000566	R-CHIP;220Kohm,5%,1/16W,TP,1005	1	SNA
...4	R726	2007-000695	R-CHIP;3.3ohm,5%,1/10W,TP,1608	4	SNA
...4	R124	2007-000775	R-CHIP;33Kohm,5%,1/16W,TP,1005	2	SNA
...4	R2007	2007-000803	R-CHIP;36Kohm,1%,1/10W,TP,1608	1	SA
...4	S1G0843	2007-001125	R-CHIP;68Kohm,1%,1/10W,TP,1608	1	SA
...4		2007-001168	R-CHIP;75ohm,5%,1/4W,TP,3216	2	SA
...4		2007-001285	R-CHIP;5.6ohm,5%,1/16W,TP,1005	4	SA
...4	OTR1	2007-001292	R-CHIP;33ohm,5%,1/16W,TP,1005	24	SNA
...4	DR43	2007-001298	R-CHIP;51ohm,5%,1/16W,TP,1005	2	SNA
...4	DR1	2007-001301	R-CHIP;68ohm,5%,1/16W,TP,1005	10	SA
...4	R16	2007-001313	R-CHIP;330ohm,5%,1/16W,TP,1005	2	SNA
...4	R326	2007-001325	R-CHIP;3.3Kohm,5%,1/16W,TP,1005	1	SNA
...4		2007-001333	R-CHIP;18Kohm,5%,1/16W,TP,1005	6	SNA
...4	PR24	2007-002970	R-CHIP;56ohm,5%,1/16W,TP,1005	4	SA
...4	HDR8	2007-007095	R-CHIP;390ohm,5%,1/16W,TP,1005	1	SA
...4		2007-007138	R-CHIP;27Kohm,1%,1/16W,TP,1005	1	SNA
...4	DR4	2007-007142	R-CHIP;10Kohm,1%,1/16W,TP,1005	1	SNA
...4		2007-007156	R-CHIP;1ohm,5%,1/16W,TP,1005	12	SNA
...4		2007-007311	R-CHIP;22Kohm,1%,1/16W,TP,1005	1	SA
...4		2007-007318	R-CHIP;1Kohm,1%,1/16W,TP,1005	24	SNA
...4		2007-007463	R-CHIP;1.1Kohm,1%,1/16W,TP,1005	1	SA
...4		2007-007517	R-CHIP;240ohm,1%,1/16W,TP,1005	2	SNA

Level	Loc.	Part Code	Description & Specification	Qty.	SA/SNA
...4		2007-007698	R-CHIP;5.1Kohm,1%,1/16W,TP,1005	2	SNA
...4		2007-007766	R-CHIP;2Kohm,1%,1/16W,TP,1005	2	SNA
...4	MR11	2007-008015	R-CHIP;75ohm,1%,1/16W,TP,1005	11	SNA
...4		2007-008117	R-CHIP;2.7Kohm,1%,1/16W,TP,1005	1	SA
...4		2007-008649	R-CHIP;220ohm,1%,1/16W,TP,1005	1	SNA
...4	DRP29	2011-000515	R-NETWORK;4.7Kohm,5%,1/16W,L,CHIP,8P,TP,	1	SA
...4	ZRN10	2011-001261	R-NETWORK;33ohm,5%,1/16W,L,CHIP,8P,TP,2.	7	SA
...4	DAR09	2011-001262	R-NETWORK;22ohm,5%,1/16W,L,CHIP,8P,TP,2.	31	SA
...4		2011-001264	R-NETWORK;10ohm,5%,1/16W,L,CHIP,8P,TP,2.	8	SNA
...4	HRP2	2011-001344	R-NETWORK;100ohm,5%,1/16W,L,CHIP,8P,TP,2	2	SA
...4		2011-001449	R-NETWORK;22ohm,5%,1/16W,L,4P,TP,1010	7	SA
...4		2011-001587	R-NETWORK;100ohm,5%,1/16W,L,CHIP-V,4P,TP	1	SNA
...4	PC43	2203-000233	C-CER,CHIP;0.1nF,5%,50V,COG,TP,1005	7	SA
...4	MC9	2203-000359	C-CER,CHIP;0.15nF,5%,50V,COG,TP,1005,0.5	1	SNA
...4	DC1	2203-000386	C-CER,CHIP;0.015nF,5%,50V,COG,TP,1005	2	SA
...4	C254	2203-000438	C-CER,CHIP;1nF,10%,50V,X7R,TP,1005	11	SA
...4	C507	2203-000489	C-CER,CHIP;2.2nF,10%,50V,X7R,TP,1005	5	SA
...4	AD480	2203-000530	C-CER,CHIP;2.7nF,10%,50V,X7R,TP,1005,-	1	SNA
...4	V1233	2203-000575	C-CER,CHIP;220nF,10%,25V,X7R,TP,2012	2	SNA
...4	AD480	2203-000714	C-CER,CHIP;3.3nF,10%,50V,X7R,TP,1005,-	6	SA
...4	DC25	2203-000812	C-CER,CHIP;0.033nF,5%,50V,COG,TP,1005	3	SA
...4	AD480	2203-000995	C-CER,CHIP;0.047nF,5%,50V,COG,TP,1005	2	SA
...4	AD480	2203-001412	C-CER,CHIP;0.03nF,5%,50V,NP0,1005	5	SNA
...4	AD480	2203-001428	C-CER,CHIP;470nF,10%,50V,X7R,TP,2012	2	SNA
...4	AD480	2203-001851	C-CER,CHIP;0.016nF,5%,50V,NP0,1608	2	SNA
...4	AD480	2203-002285	C-CER,CHIP;10nF,10%,50V,X7R,TP,1005	12	SNA
...4	AD480	2203-002525	C-CER,CHIP;0.56nF,10%,50V,X7R,TP,1005	6	SNA
...4	AC2	2203-002711	C-CER,CHIP;100nF,10%,25V,X7R,TP,1608	1	SA
...4	C151	2203-003039	C-CER,CHIP;0.008nF,0.25pF,50V,COG,TP,100	1	SNA
...4	AAC1	2203-005249	C-CER,CHIP;100nF,10%,50V,X7R,TP,1608	10	SNA
...4	AD480	2203-005344	C-CER,CHIP;22nF,10%,25V,X7R,TP,1005,0.5T	1	SNA
...4	AD480	2203-005393	C-CER,CHIP;0.005nF,0.1pF,50V,NP0,TP,1005	1	SNA
...4	VC37	2203-006048	C-CER,CHIP;100nF,10%,10V,X7R,TP,1005	111	SA
...4	AD480	2203-006126	C-CER,CHIP;47nF,10%,16V,X7R,TP,1005	21	SNA
...4	JC10	2203-006324	C-CER,CHIP;2200nF,10%,10V,X5R,1608	8	SA
...4	AD480	2203-006336	C-CER,CHIP;10000nF,10%,25V,X5R,TP,3216	1	SA
...4	C802	2203-006348	C-CER,CHIP;1000nF,10%,25V,X5R,TP,1608	1	SA
...4	C125	2203-006361	C-CER,CHIP;10000nF,10%,10V,X5R,TP,2012	21	SC
...4	C234	2203-006378	C-CER,CHIP;4700nF,10%,6.3V,X5R,TP,1608	1	SNA
...4	HE4	2203-006474	C-CER,CHIP;22000nF,20%,6.3V,X5R,2012	10	SA

Exploded Views and Parts List

Level	Loc.	Part Code	Description & Specification	Qty.	SA/SNA
...4	HDC11	2203-006562	C-CER,CHIP;1000nF,10%,10V,X5R,TP,1005	15	SNA
...4	AD480	2203-006824	C-CER,CHIP;4700nF,10%,10V,X5R,1608	1	SNA
...4	C23	2203-006890	C-CER,CHIP;10000nF,20%,6.3V,X5R,1608	25	SNA
...4	AD480	2203-006992	C-CER,CHIP;0.33nF,5%,50V,C0G,TP,1005	2	SNA
...4	AD480	2203-007176	C-CER,CHIP;10000nF,10%,16V,X5R,TP,2012	4	SNA
...4	AD480	2203-007230	C-CER,CHIP;47000nF,20%,6.3V,X5R,TP,2012,	2	SA
...4	T0052	2703-000158	INDUCTOR-SMD;1uH,10%,2012	2	SA
...4	T0052	2703-002238	INDUCTOR-SMD;1UH,5%,2012	2	SNA
...4	T0052	2703-003149	INDUCTOR-SMD;2.2uH,20%,5050	1	SA
...4		2703-003407	INDUCTOR-SMD;120nH,5%,1608	1	SA
...4	T0052	2703-003790	INDUCTOR-SMD;4.7uH,20%,8080	1	SA
...4		2703-003890	INDUCTOR-SMD;47uH,10%,3225	1	SA
...4		2703-003930	INDUCTOR-SMD;4.7uH,20%,5050	4	SA
...4	X202	2801-003326	CRYSTAL-SMD;24MHz,30ppm,28-ABX,20pF,50oh	1	SA
...4	X202	2801-003948	CRYSTAL-SMD;12MHz,30ppm,28-AAN,12pF,60oh	1	SA
...4	X202	2801-004734	CRYSTAL-SMD;25.000000MHz,20ppm,28-AAN,12	1	SA
...4	F103	2901-001506	FILTER-EMI SMD;5V,0.13A,0pF,2x1x0.5mm,TP	2	SA
...4	DR32	3301-000314	BEAD-SMD;120ohm,1.6x0.8x0.8mm,-,-,-	7	SNA
...4	T0568	3301-001526	BEAD-SMD;10ohm,1.6x0.8x0.8mm,1000mA,TP,,	3	SNA
...4	T0568	3301-002039	BEAD-SMD;26ohm,1608,TP	36	SA
...4	CN401	3701-001724	CONNECTOR-DSUB;15P,3ROW,FEMALE,ANGLE,NI	1	SA
...4	CN601	3701-001736	CONNECTOR-HDMI;19P,2ROW,FEMALE,SMD-A	4	SA
...4	CN303	3707-001104	CONNECTOR-OPTICAL,SMD-A(Ultra Slim),SPDI	1	SA
...4		3710-002276	SOCKET-INTERFACE;24P,1R,0.5mm,SMD-A,AU,B	1	SA
...4		3710-003374	CONNECTOR-SOCKET;64P,2R,0.5mm,ANGLE,NI+S	1	SA
...4	HB01A	3711-005601	HEADER-BOARD TO CABLE;BOX,8P,1R,2mm,SMD-	1	SA
...4	HB01A	3711-005925	HEADER-BOARD TO CABLE;BOX,51P,1R,0.5mm,S	1	SA
...4	HB01A	3711-007319	HEADER-BOARD TO CABLE;SMD,4P,1R,2.50mm,S	1	SA
...4		3711-007569	CONNECTOR-HEADER;BOX,14P,2R,2.0mm,DIP,SN	1	SA
...4	CN1501	3722-003044	JACK-USB;4P/1C,NI,BLK,SMD-A,A-TYPE	2	SA
...4	CN302	3722-003158	JACK-PHONE;1/7P,NI,BLK,ANGLE	2	SA
...4	CN1701	3722-003199	JACK-MODULAR;8P/8C,ANGLE,AU,1P	1	SA
...4	CN501	3722-003207	JACK-PHONE;2P/9C,AU,LIMEGRN,SMD-A(DIP)	1	SA
...4	ET01	BN40-00221A	TUNER;DTM-8B/W125S,DTM-8B/W125S,DVB-T Ha	1	SA
...4		BN41-01661A	PCB MAIN;X5 DVB,FR-4,4,1.2T,192*214	1	SNA
...4		BN97-05303A	ASSY MICOM;SubMicomEU_XXXX,U66A,61P805,0	1	SNA
....5		0903-001718	IC-MICROCONTROLLER;61P805-RG480WT,LQFP,4	1	SNA
...4		BN97-05329A	ASSY MICOM;T-MST4DEUC-XXXX,U57A,2010.11.	1	SNA
....5		1107-001990	IC-NAND FLASH;KFG1GN6W2D-HIB6,1Gbit,64Mx	1	SA
....5		BN46-00042E	S/W-E-MANUAL;UD4000 UD5000,DVB EU4,XC XN	1	SNA



Level	Loc.	Part Code	Description & Specification	Qty.	SA/SNA
....5		BN46-00060A	S/W MICOM;T-MST4DEUC,EU,Eng/Swe/Dan/Nor/	1	SNA
..3		BN97-05365A	ASSY DRM-CI PLUS;BN46-00063A,UN4D X5,X6,	1	SNA
..4		BN46-00063A	KEY CODE-CI PLUS;X5/X6,TCTC,SERIAL CODIN	1	SNA
1		BN91-06687A	ASSY LCM-AMLCD VD;BN95-00434A,BN44-00422	1	SNA
.2	M-P	6001-002653	SCREW-MACHINE;BH,+,M3,L6,ZPC(WHT),SWRCH1	5	SA
.2	P001A	BN44-00422B	DC VSS-LED TV PD BD;PD46A0_BDY,PD46A0_BD	1	SA
.2	PANEL	BN95-00434A	PRODUCT LCD;LTJ400HM03-V,1920*1080	60HZ	1
..3	M-P	6001-002653	SCREW-MACHINE;BH,+,M3,L6,ZPC(WHT),SWRCH1	2	SA
..3		6001-002673	SCREW-MACHINE;CH,+,M3.0,L4.0,Ni PLT,SWRC	27	SNA
..3		BN68-02471A	LABEL-STICKER;WW,Art Paper,80,40,AV	1	SNA
..3		BN74-00053A	TAPE-PROTECTION;T460BE1-FB,T550BE1-FB,3M	5	SNA
..3		BN90-03096A	ASSY MISC-BLU;LTJ400HM03-V,5K 40" LCD	1	SNA
..4		6001-002672	SCREW-MACHINE;FH,+,M1.7,L4.0,Ni PLT,SWRC	12	SNA
..4		6001-002673	SCREW-MACHINE;CH,+,M3.0,L4.0,Ni PLT,SWRC	10	SNA
..4		BN02-00028A	TAPE DOUBLE FACE-REFLECTOR;NNB 32/40/46/	1	SNA
..4		BN02-00043A	TAPE ETC-SHEET;NNB 32/40/46/55,3M 3357 F	4	SNA
..4		BN02-00044A	TAPE ETC-FIXING;NNB 32/40/46/55,SB00+MKT	2	SNA
..4		BN63-08067A	SHEET-PROTECT;40" 5K6K, JS153HH,220 um,8	1	SNA
..4		BN63-08068A	SHEET-PRISM H;40" 5K6K, MAS670M, 3degree	1	SNA
..4		BN63-08069A	SHEET-DIFFUSER;40" 5K6K, PTR883,,290um,8	1	SNA
..4		BN63-08081A	SHEET-REFLECTOR;40" 5K6K, SLP7-15R,,360u	1	SNA
..4		BN64-01639A	CHASSIS-BOTTOM BAR (U);NNB 5K 40",AL 606	1	SNA
..4		BN96-16605A	ASSY MISC P-LED BAR L;40" 5K_6K_Left,G/D	1	SNA
..4		BN96-16606A	ASSY MISC P-LED BAR R;40" 5K_6K_Right,G/	1	SNA
..4		BN96-16627A	ASSY MISC P-LGP LED;40",5K,6K PMMA,,3T 8	1	SNA
....5		BN61-07273A	LGP-LED;40",5K,6K PMMA,,3T ,896.6 X 509.	1	SNA
....5		BN74-00156A	TAPE-REFLECTOR LGP;40" 5K/6K,,E60L,895.2	1	SNA
..4		BN96-16681A	ASSY MISC P-CHASSIS BOTTOM;NNB 40" LCD/	1	SNA
....5		6001-002617	SCREW-MACHINE;CH,+,M3,L4,Ni_PLT (White),	8	SNA
....5		6001-002673	SCREW-MACHINE;CH,+,M3.0,L4.0,Ni PLT,SWRC	10	SNA
....5		BN02-00031A	TAPE FILAMENT-WIRE;NNB 32/40/46/55,3M891	5	SNA
....5		BN02-00032A	TAPE DOUBLE FACE-HOLDER LGP;NNB 32/40/46	2	SNA
....5		BN02-00041A	TAPE ETC-HEAT-SINK;NNB 32/40/46/55,MTU,0	8	SNA
....5		BN39-01424A	LEAD CONNECTOR-LED;40" 5K_6K wire-harnes	1	SNA
....5		BN61-07328A	HOLDER-LGP B;NNB 32/37/40/46/55,SILICONE	1	SNA
....5		BN61-07329A	HOLDER-WIRE;NNB 32/37/40/46/55,SILICON R	1	SNA
....5		BN61-07388A	HOLDER-LGP C;NNB 32/37/40/46/55,PC,6.2,1	2	SNA
....5		BN61-07389A	HOLDER-LGP D;NNB 46/55,SILICONE-RUBBER,7	1	SNA
....5		BN61-07424A	BRACKET-WALL MOUNT;NNB 32/40/46/55,SPCC,	4	SNA
....5		BN62-00161A	INSULATION-FFC;NNB 32/40/46/55,PET,T0.1,	1	SNA

Exploded Views and Parts List

Level	Loc.	Part Code	Description & Specification	Qty.	SA/SNA
....5		BN62-00165A	INSULATION-POWER;NNB 40",Longhua PC1870	1	SNA
....5		BN62-00175A	INSULATION-SOURCE;NNB 40",PET,T0.1,W14,	2	SNA
....5	CC02	BN64-01638A	CHASSIS-BOTTOM;NNB 5K 40",AL3104,T1.0,W5	1	SNA
....5		BN64-01640A	CHASSIS-BOTTOM BAR (LR);NNB 5K 40",AL 60	2	SNA
....5		BN74-00061A	TAPE-BOTTOM CHASSIS;T460FAE1-FA , T550FA	2	SNA
...4		BN96-16684A	ASSY FRAME P-MOLD MIDDLE (U);NNB 40" LC	1	SNA
....5		BN60-00308A	SPACER-PANEL (U);NNB 40",ESD-SP(0.4T)+M	2	SNA
....5		BN61-07291A	FRAME-MOLD MIDDLE U;NNB 5,6,6.5K_40",PC+	1	SNA
...4		BN96-16685A	ASSY FRAME P-MOLD MIDDLE (D);NNB 40" LC	1	SNA
....5		BN60-00340A	SPACER-PAD (UD);NNB 40",SSP-40+MKT50D,L	2	SNA
....5		BN60-00359A	SPACER-SPACER PANEL DL_1;NNB 40",ESD-SP	1	SNA
....5		BN60-00360A	SPACER-SPACER PANEL DL_2;NNB 40",ESD-SP	1	SNA
....5		BN60-00361A	SPACER-SPACER PANEL DR_1;NNB 40",ESD-SP	1	SNA
....5		BN60-00362A	SPACER-SPACER PANEL DR_2;NNB 40",ESD-SP	1	SNA
....5		BN61-07290A	FRAME-MOLD MIDDLE D;NNB 5K,40",PC+G/F 10	1	SNA
...4		BN96-16686A	ASSY FRAME P-MOLD MIDDLE (L);NNB 40" LC	2	SNA
....5		BN02-00040A	TAPE DOUBLE FACE-MIDDLE;NNB 32/40/46/55,	2	SNA
....5		BN60-00309A	SPACER-PANEL (LR);NNB 40",ESD-SP(0.4T)+	2	SNA
....5		BN60-00331A	SPACER-PG (LR);NNB 40" LCD-HD,ESD-SP(0.	4	SNA
....5		BN60-00341A	SPACER-PAD (LR);NNB 40",SSP-40+MKT50D,L	2	SNA
....5		BN61-07289A	FRAME-MOLD MIDDLE-L;NNB 5K_40",PC+G/F 10	2	SNA
...3		BN96-16484A	ASSY OPEN CELL;LSJ400HM02-V,8bit,40inch,	1	SNA
...3	TCON	BN96-16485A	ASSY PCB P-T-CON;LSJ400HM02-S,FR4,SUWON,	1	SA
...3		BN96-16679A	ASSY MISC P-CHASSIS TOP;NNB 40" 5/6K	1	SNA
...4		BN60-00296A	SPACER-TOP (UD);NNB 40",E_FOAM,L896.0,T	2	SNA
...4		BN60-00297A	SPACER-TOP (LR);NNB 40",E_FOAM,L501.2,T	2	SNA
...4	AC157	BN64-01637A	CHASSIS-TOP;NNB 5K 40",SECC,T0.8,W526.6,	1	SNA
...3		BN96-16680B	ASSY COVER P-SOURCE;NNB 5/6/6.4/6.51K 40	1	SNA
...4		BN60-00162Z	SPACER-FOAM;FOAM,50000mm,Dark Gray,0.35T	1	SNA
...4		BN60-00342A	SPACER-SOURCE;NNB 32/40/46/55,SH0140U+AT	4	SNA
...4		BN61-02932N	BRACKET-STOPPER NUT;LED TV,M3*D7*L6.6,L6	5	SNA
...4		BN61-07359A	BRACKET-STOPPER NUT;LED TV D6500,D6*L5.5	2	SNA
...4		BN62-00155A	INSULATION-COVER LR;NNB 40" INSULATION	2	SNA
...4		BN63-08033A	COVER-SOURCE;NNB 40",SECC,T0.8,W43,L891	1	SNA
...3	SB05A	BN96-16911A	ASSY BRACKET P-STAND LINK;UD5000 37/40/4	1	SNA
...4		BN61-02932L	BRACKET-STOPPER NUT;LED TV,M3*L7.5*D5.5,	2	SNA
...4		BN61-02932M	BRACKET-STOPPER NUT;LED TV D6500,M4*D6*L	4	SNA
...4	CB18	BN61-07072A	BRACKET-STAND LINK;UD6100 46",SECC,T 2.0	1	SNA
1		BN92-07590C	ASSY BOX;UD5000 40	1	SNA
.2		BH68-00662A	LABEL BOX-00;ALL MODEL,MOJO 90G,60,110,W	1	SNA

Level	Loc.	Part Code	Description & Specification	Qty.	SA/SNA
.2		BN69-05996C	BOX-SET;40UD5000,CB,A-01,DW2,ECT50,YEL,W	1	SNA
1		BN92-07606A	ASSY P/MATERIAL;UD5000 40	1	SNA
.2		6902-000379	BAG AIR;LDPE,T0.2,W1000,L1800,TRP,1260.0	1	SNA
.2	M040	6922-000003	BAND PP;PP,T0.8,W18,L1650M,TRP,DA69-9014	1	SNA
.2		BN68-02422B	LABEL-WARNING SHIPPING;ALL MODEL,A/P 100	1	SNA
.2		BN69-00257X	PACKING-SHEET PALLET;BAG SHEET,CB,PEP110	1	SNA
.2		BN69-03982E	PAD PACKING-EDGE;LB6T,PAPER,8,120,2060,Y	1	SNA
.2		BN69-05184M	PALLET;40D5000,WOOD,1180,1150,135,14000,	1	SNA
.2		BN69-05418A	PACKING-BAG WRAPPING;-LDPE,-,0,019,500,	2	SNA
.2		BN69-05690A	CUSHION-01,SET;UD6100 40",EPS,EXPORT, DE	1	SNA
.2		BN69-05788A	CUSHION-01,FRONT;40UD7000,EPS	1	SNA
.2		BN69-06641A	PACKING-PAD;PAD,PAPER,-,CB-SW4,1130,1060	1	SNA
.2		BN69-06681A	PACKING-BAG SHEET ROLL;-CB,-,FOAM 0,5mm	2	SNA
.2		BN74-00008D	TAPE-OPP MASKING;OPP,T0.05,W75,L800M,CLR	3	SNA
1	ACCE1	BN92-07753H	ASSY ACCESSORY;UE32D5000PWXZG	1	SNA
.2	ACCE2	BN96-17777D	ASSY ACCESSORY-CABEL;UE32D5000PWXRU	1	SNA
..3		3709-001663	CONNECTOR-CARD EDGE;64P,0.5mm,MALE,PCMCI	1	SA
..3	EC11	3903-000525	CBF-POWER CORD;DT,CEE,LP-21L,250V,2.5A,B	1	SA
..3	T0120	4301-000121	BATTERY-MN;1.5V,R03,10.5x44.5m,HOLDER,7.	2	SNA
..3		6902-001340	BAG PE;LDPE,T0.05,W250,L350,TRP,RECYCLE	1	SNA
..3	REMO2	AA59-00465A	REMOCON;TM1050,49,3V,EUROPE iDTV,5000,40	1	SA
..3	M0114	BN39-01154F	CBF SIGNAL;UE40B7000WXXC,24P/20P,30AWG,	1	SA
..3	EC03	BN39-01154W	CBF SIGNAL;COMPONENT GENDER / UD8000,2P,	1	SA
..3		BN61-05491A	HOLDER-WIRE STAND;UB7000 46inch,NYRON	1	SNA
..3	M9889	BN63-01798B	CLOTH-CLEAN;cloth,180,200,sea blue,ToC	1	SNA
..3	EH03A	BN96-18153A	ASSY HOLDER P-RING;11 LED-TV	1	SNA
...4		6902-001404	BAG ZIPPER;LDPE,T0.05,W80,L100,TRP	1	SNA
...4	AH365	BN61-07295A	HOLDER-RING;40UD5500,ABS,BK0007,HB	4	SNA
.2	ACCE4	BN96-17777J	ASSY ACCESSORY-MANUAL;UE32D5000PWXZG	1	SNA
..3		6902-000476	BAG PE;LDPE,T0.03,W250,L350,TRP,Recycle,	1	SNA
..3	T0527	BN68-00513A	LABEL-E,PASS;ALL MODEL,YUPO(110G),50X15,	1	SNA
..3		BN68-00514K	MANUAL FLYER-WARRANTY CARD;comm,Samsung,	1	SNA
..3		BN68-03019A	LEAFLET-SAFETY GUIDE;ALL,SAMSUNG,28LENGS	1	SNA
..3		BN68-03432C	MANUAL USERS;D5000,SAMSUNG,Eng/Ger/Fre/I	1	SNA
1		BN92-07925D	ASSY LABEL;UE40D5000PWXXC	1	SNA
.2		BN68-03664P	LABEL-STICKER;UD5R,T0.05,60,120,Energy R	1	SNA
.2	T0527	BP68-00052B	LABEL-00,RATING;CCTV,TETRON PAPER,T0.05,	1	SNA