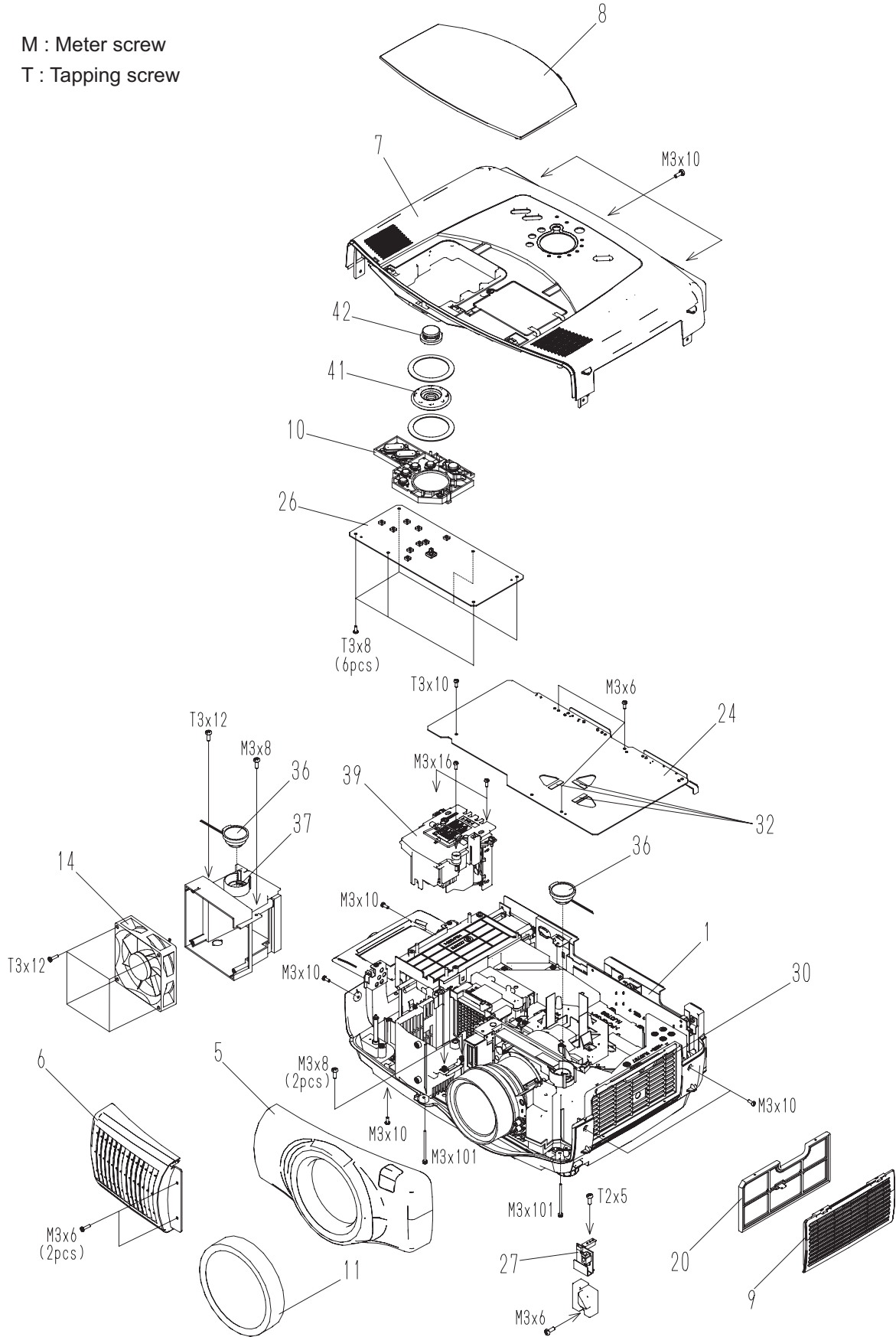


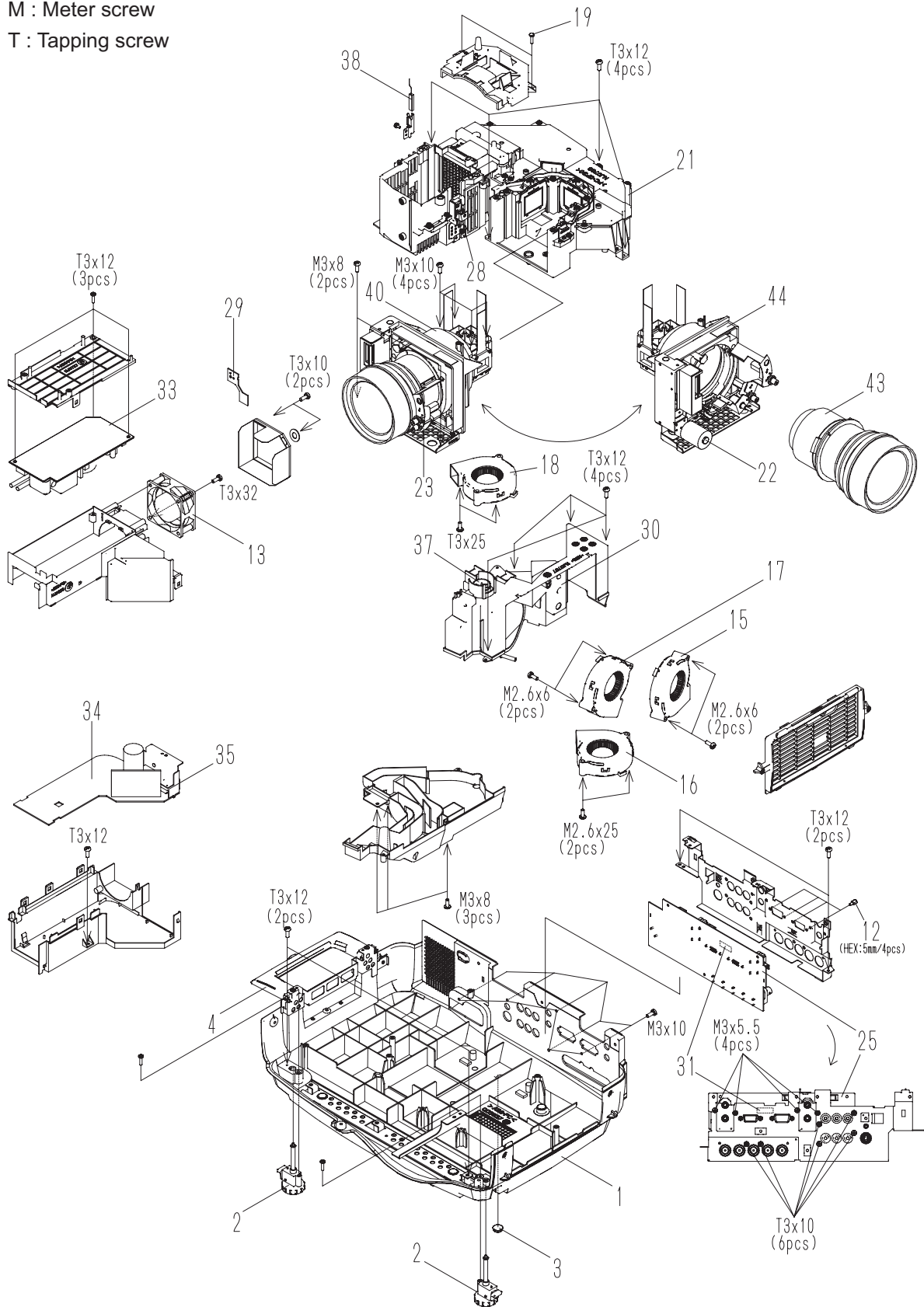
8. Disassembly diagram

M : Meter screw
 T : Tapping screw



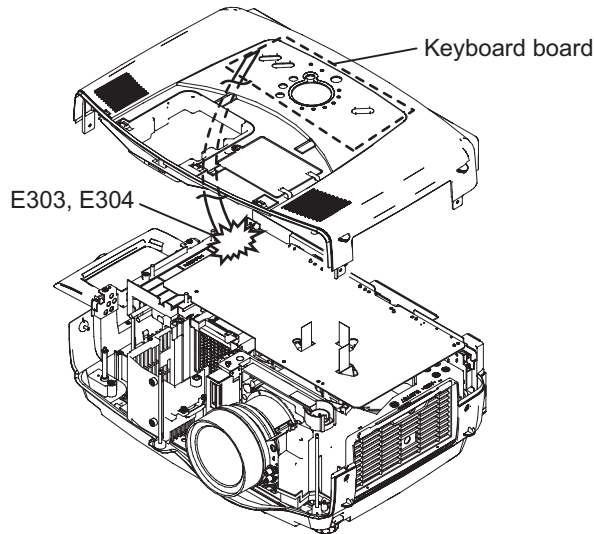
TLP-X4500(P5XMLA)

M : Meter screw
T : Tapping screw



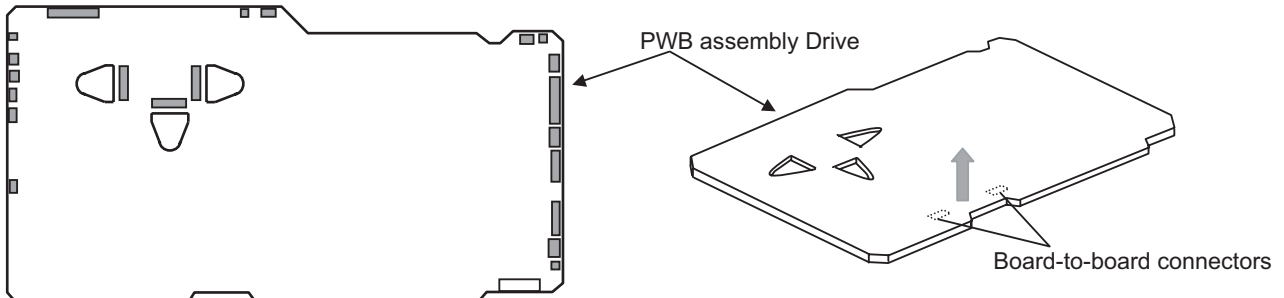
● **Cautions when disassembling the projector**

The Keyboard board is installed on the Upper case. When removing, lift carefully without excessive force to prevent damaging cables and connectors.

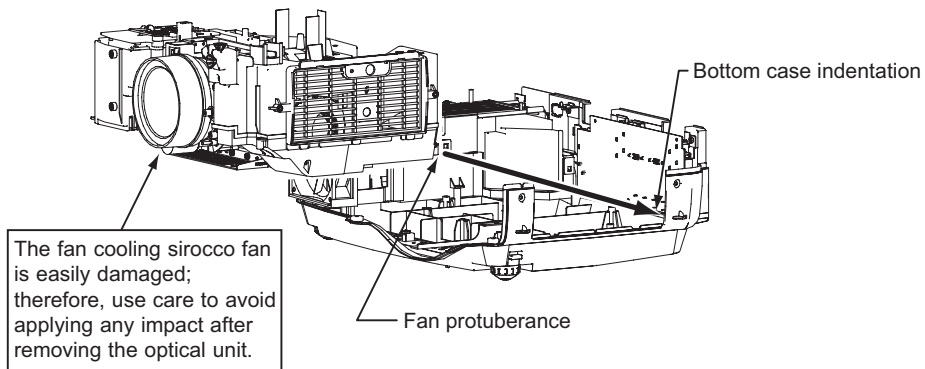


When removing the Drive board, there might be damage to the flexible cables of LCD panels and two board-to-board connectors. Handle them with care when disassembling.


- (1) Before remove the Drive board, disconnect the all cables from connectors on it.
- (2) Lift up the Drive board straightly to disconnect two board-to-board connectors on the opposite side of it, after taking off the screws of it.

















When removing the optical unit, move it in the direction of the arrow so that the protuberance of the optical unit fan does not become caught in the indentation in the bottom case. Use care to avoid applying any stress to the optical unit.



9. Replacement Parts list

PRODUCT SAFETY NOTE : Components marked with a  have special characteristics important to safety. Before replacing any of these components, read carefully, the PRODUCT SAFETY NOTICE of this Service Manual. Don't degrade the safety of the projector through improper servicing.

SYMBOL NO.	PARTS NO.	DESCRIPTION	SYMBOL NO.	PARTS NO.	DESCRIPTION
1	QD39211	BOTTOM CASE ASS'Y	31	CK31602R	EL4332CS
2	QJ01061	FRONT FOOT ASSY	32	EA01031R	CPC30 LOW CONNECTOR
3	PE00181	RUBBER FOOT	 33	HA01251	POWER UNIT(BALLAST)
4	PV00386	HANDLE	 34	HA01113	POWER UNIT(CIRCUIT)
5	QD39331	FRONT BEZEL R ASS'Y	 35	2722449	FUSE 8A
6	QD36945	FRONT BEZEL L ASS'Y	36	GK01211	SPEAKER
7	QD39201	UPPER CASE ASS'Y	37	MU01932	SPEAKER CUSHION
8	PH34487	LAMP DOOR ASS'Y	 38	FH00282	TEMP. SENSOR
9	QD36988	FILTER COVER ASSY	 39	DT00603	LAMP UNIT ASS'Y
10	PC05508	CONTROL BUTTON ASSY	40	UX21805	LCD/LENS PRISM ASS'Y
11	PH33633	LENS CAP ASSY	41	PC05525	DIAL BUTTON ASSY
12	MJ02432	D-SUB SCREW	42	PC05546	CENTER BUTTON ASSY
 13	GS00801	DC FAN(INTAKE)	43	KQ03681	LENS ASS'Y
 14	GS00772	DC FAN(EXHAUST)	44	UX22955	LCD/PRISM ASS'Y
 15	GS00971	DC FAN(PANEL G)			
 16	GS00972	DC FAN(PANEL B)			
 17	GS00973	DC FAN(PANEL R)	 EV01662		POWER SUPPLY CORD(US TYPE) W/CORE
 18	GS00991	DC FAN(LAMP)	 EV01672		POWER SUPPLY CORD(EUROPE TYPE) W/CORE
19	3702442	PLASTIC RIVET	 EV01682		POWER SUPPLY CORD(UK TYPE) W/CORE
20	NJ08081	FILTER FRAME ASS'Y	HL02001		REMOTE CONTROL UNIT
21	UE22565	DICHROIC OPTICS UNIT	EW06661		RGB-D CABLE(15PIN MALE TO 15PIN MALE)
22	GP00291	SHIFT MECH.MOT.ASSY	EW06031		3 CONDUCTOR VIDEO/AUDIO CABLE
23	GP00301	PJ LENS MOT.ASSY	EZ01661		M1-D CABLE
24	JP07717	PWB ASS'Y DRIVE	QR61392		INSTRUCTION MANUAL
25	JP06911	PWB ASS'Y SIGNAL			
26	JP06928	PWB ASS'Y KEYBOARD			
27	JP06923	PWB ASS'Y REMOTE CONT.	NX05741		CLEANING TOOL FOR DUST
28	JP06924	PWB ASS'Y SW	NX05742		COTTON STICK L70
29	JP06925	PWB ASS'Y SENSOR			
30	JP06926	PWB ASS'Y DUST SENSOR			

