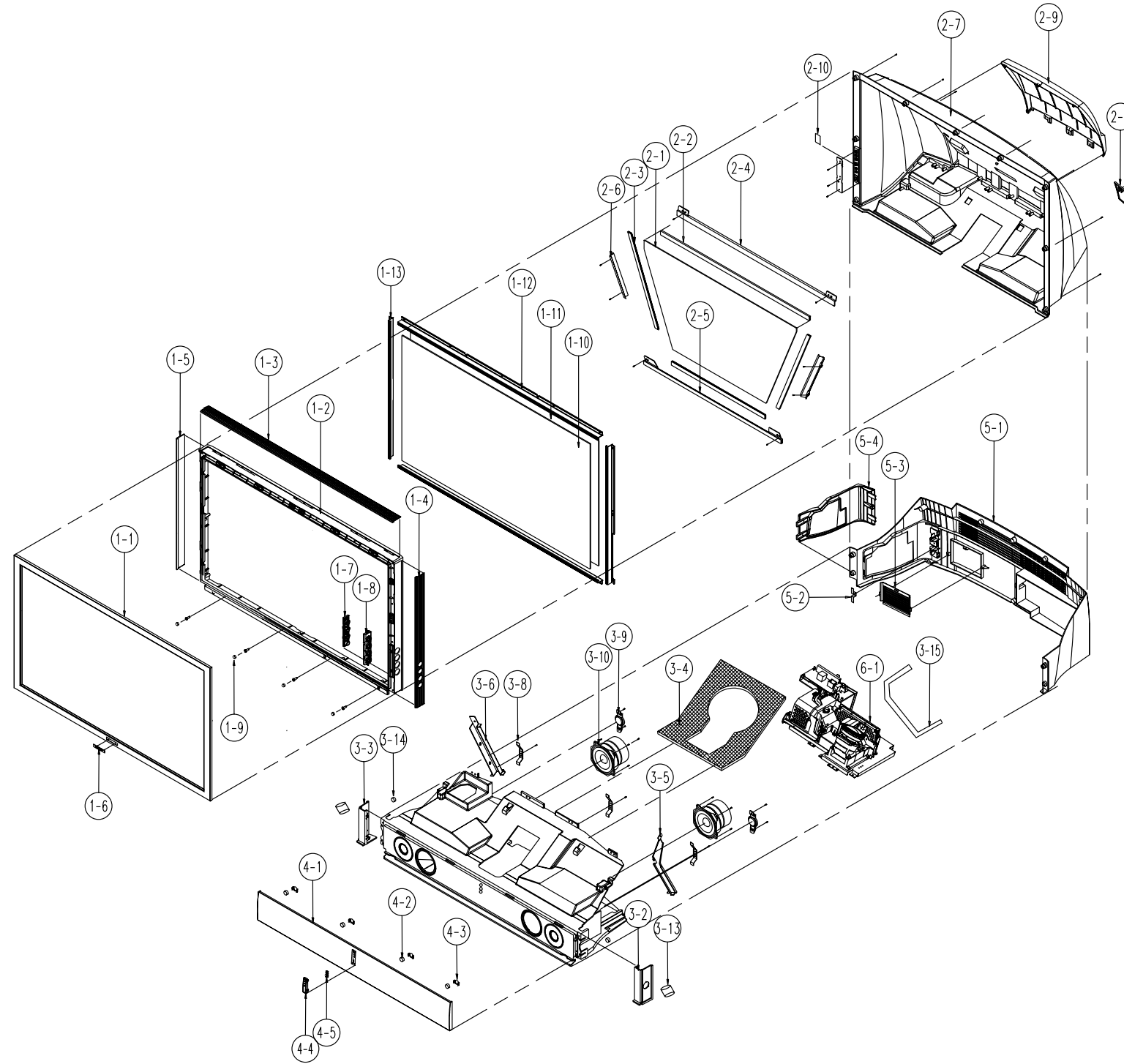


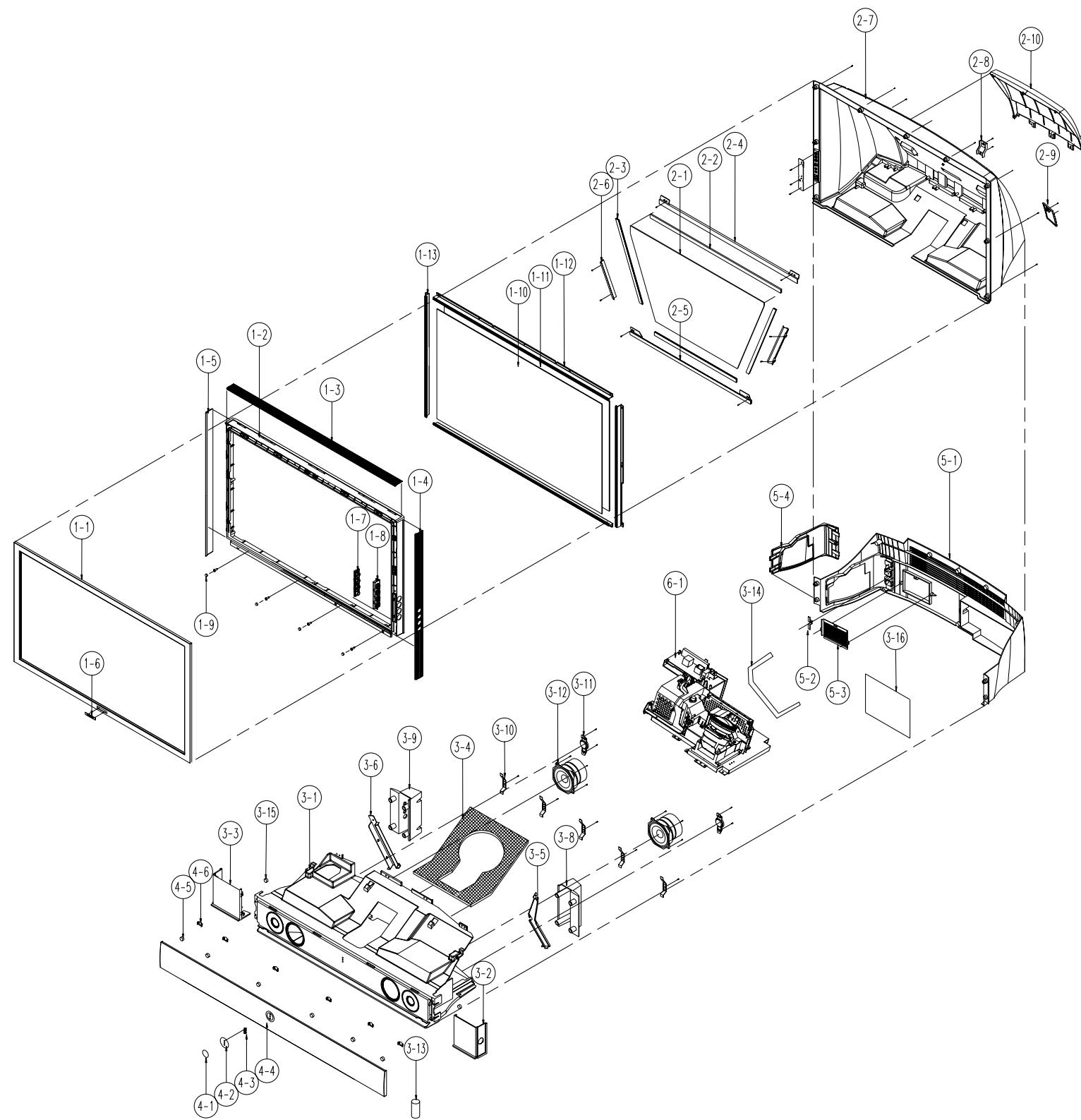
2. Exploded View & Parts List

2-1 SP43L2HX/XEE



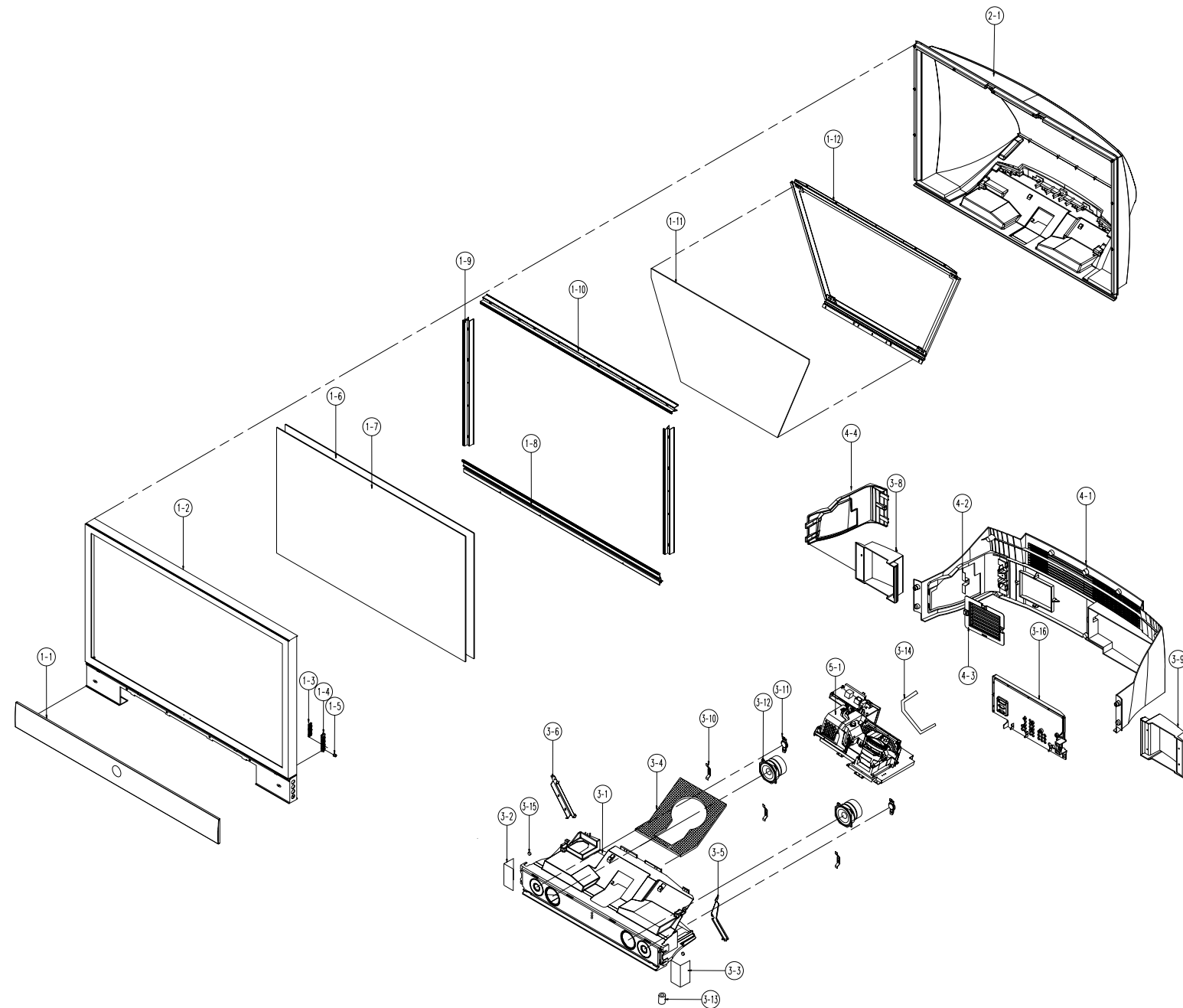
No	Code No	Description;Specification	Q'ty	Remark	S.N.A
1-1	AA64-01788L	CABINET FRONT;43L2,HIPS,HB,GRY,SV012P,EU	1		S.N.A
1-2	AA64-01791B	CABINET-MIDDLE;43L2,HIPS,HB,G4309,SV-012	1		S.N.A
1-3	BP63-00031A	COVER-DECO, TOP;43L2,ABS,HB,BLK,SVM-4704P	1		S.N.A
1-4	BP63-00037A	COVER-DECO,PAL;43L2,PAL,ABS,HB,BLK,SVM-4	1		S.N.A
1-5	BP63-00033A	COVER-DECO,L;43L2,ABS,HB,BLK,SVM-4704P,	1		S.N.A
1-6	BP64-00177A	BADGE-BRAND;ALL,AL,T1.5,70,11.3,,BLK,SIL	1		S.N.A
1-7	AA64-01793B	KNOB-FAMILY;43L2,ABS,HB,G3676,SVM-3012	1		
1-8	AA64-01794B	KNOB-HOLDER;43L2,ABS,HB,G3676,VACCUM PLA	1		
1-9	AA60-00050A	SPACER-FRONT;43J6,NEOPRENE HB,-,-,-,GRAY	4		S.N.A
1-10	AA67-00168A	SCREEN LENTI;LENTICUALR,43W,MS,973*558,T	1		
1-11	AA67-00171A	SCREEN FRESNEL;43W,MS,973*558,T1.35,43-T	1		
1-12	AA61-01136A	BRACKET-SCREEN, TOP;43,AL6063 EXTR,BLK	2		S.N.A
1-13	AA61-01137A	BRACKET-SCREEN, SIDE;43,AL6063 EXTR,BLK	2		S.N.A
2-1	BP67-00040A	MIRROR-FRONT,DM1;43,GLASS,810*472*434,F	1		
2-2	AA63-00021G	SPACER-MIRROR;524J,434J,PVC,-,-,-,BLK,-,-	3		S.N.A
2-3	AA63-00021J	SPACER-MIRROR;43J6,PVC,-,-,-,BLK,-,-,L81	1		S.N.A
2-4	AA61-00184B	BRACKET-MIRROR, TOP;43J6,SECC-1,T1.6,-,-,-	1		S.N.A
2-5	AA61-00182B	BRACKET-MIRROR BOT;43J6,SECC-1,T1.6,-,-,-	1		S.N.A
2-6	AA61-00361B	BRACKET- MIRROR SIDE;43J6,SECC-1,T1.0,-,-	2		S.N.A
2-7	AA64-00546C	CABINET-BACK, TOP;43L2,HIPS,VO,G4309	1		
2-8	AA63-00157C	COVER-DUST;43L2,HIPS,VO,G4309	1		S.N.A
2-9	AA63-00599A	COVER-BACK;507W,HIPS,VO,GRY,G4309	1		
2-10	AA60-00047B	SPACER-SIDE, JACK;43L2,NEOPRENE,GRAY,VO	1		S.N.A
3-1	AA64-00548D	CABINET-MAIN;43J6,HIPS,VO,GRY	1		S.N.A
3-2	AA61-00652B	HOLDER-SIDE,R;43L2,HIPS,G4309,HB SV-012P	1		S.N.A
3-3	AA61-00655B	HOLDER-SIDE,L;43L2,HIPS,G4309,HB SV-012P	1		S.N.A
3-4	BP60-00018A	SPACER-LENS;50L2,PU FORM VO,BLK	1		S.N.A
3-5	AA61-00853B	BRACKET-SUPPORT,L;50J6,SECC-1,T1.6,NTR	1		S.N.A
3-6	AA61-00852B	BRACKET-SUPPORT,R;50J6,SECC-1,T1.6,NTR	1		S.N.A
3-7	AA61-00165B	BRACKET-GRILLE;43J6,SECC-1,T1.0,-,-,BLK,	2		S.N.A
3-8	3001-001144	SPEAKER;25W,70HM,88DB,1.6KHZ	2		
3-9	3001-001282	SPEAKER;25W,80HM,90DB,55HZ	2		
3-10	AA63-60117A	SPACER-FOOT;SVP403J,NEOPRENE,-,-,-,BLK,-	2		S.N.A
3-11	AA61-00678B	HOLDER-BOSS;43/50L2,HIPS,NTR,HB	2		S.N.A
3-12	AA61-00524B	BRACKET-SUPPORT;43J6,SECC-1,T1.6,-,-,CLR	1		S.N.A
4-1	BP63-00041A	COVER-GRILLE;43L2,HIPS,HB,GRAY	1		S.N.A
4-2	AA61-00206A	MAGNET-GRILLE;43J6,PI15X3T,-,-,-,-	2		S.N.A
4-3	AA61-00651A	HOLDER-MAGNET,BOT;TOOL,J2,-,-,-,-,MOLD	2		S.N.A
4-4	BP63-00042A	COVER-DECO,LED;43L2,ABS HB,GRAY,AL VACCU	1		S.N.A
4-5	BP64-00071A	INDICATOR LED;507W,ACRYL	1		S.N.A
5-1	AA64-00547C	CABINET-BACK, BOT;43L2,HIPS,VO,G4309	1		
5-2	AA61-10379B	BRACKET-COVER;SP43J6,SECC-1,T1.0,-,-,-,-	1		S.N.A
5-3	BP61-00163A	BRACKET-DUST;50L2,SPC,T0.5	1		S.N.A
5-4	BN63-00332A	COVER-LAMP;50L2HX,HIPS,VO,G4309	1		S.N.A
5-5	BP91-00790A	ASSY MISC-ENGINE,MECHA;SP43L2HX,L63A	1		S.N.A

2-2 SP50L2HX/BWT



No	Code No	Description;Specification	Q'ty	Remark	S.N.A
1-1	AA64-01789F	CABINET-FRONT;50L2,GUJU,HIPS,HB,G4309,SV	1		S.N.A
1-2	AA64-01790B	CABINET-MIDDLE;50L2,HIPS,HB,G4309,SV-012	1		
1-3	BP63-00032A	COVER-DECO, TOP;50L2,ABS,HB,BLK,SV-704P 1	1		S.N.A
1-4	BP63-00034A	COVER-DECO,L;50L2,ABS,HB,BLK,SV-704P 820	1		S.N.A
1-5	BP63-00038A	COVER-DECO,PAL;50L2,PAL,ABS,HB,BLK,SV-70	1		S.N.A
1-6	BP64-00177A	BADGE-BRAND;ALL,AL,T1.5,70,11.3.,BLK,SIL	1		S.N.A
1-7	AA64-01793B	KNOB-FAMILY;43L2,ABS,HB,G3676,SVM-3012	1		
1-8	AA64-01794B	KNOB-HOLDER;43L2,ABS,HB,G3676,VACCUM PLA	1		
1-9	AA67-00169A	SCREEN LENTI;LENTICUALR,50W,MS,1128*647,	1		
1-10	AA67-00172A	SCREEN FRESNEL;50W,MS,1128*647,T1.35,P,5	1		
1-11	AA61-01138A	BRACKET-SCREEN, TOP;50,AL6063 EXTR,BLK	2		S.N.A
1-13	AA61-01139A	BRACKET-SCREEN, SIDE;50,AL6063 EXTR,BLK	2		S.N.A
2-1	BP67-00041A	MIRROR-FRONT,DM1;50, GLASS,922*547*512*3	1		
2-2	AA63-00021K	SPACER-MIRROR;50J6,PVC,BLK,HB L500	3		S.N.A
2-3	AA63-00021E	SPACER-MIRROR;SP-434JMF,PVC,-,-,-,BLK,-,	1		S.N.A
2-4	AA61-00443B	BRACKET-MIRROR, TOP;ST-50J6,SECC,T1.6,-,-	1		S.N.A
2-5	AA61-00445B	BRACKET-MIRROR,BOT;ST-50J6,SECC,T1.6,-,-	1		S.N.A
2-6	AA61-00444B	BRACKET-MIRROR, SIDE;ST-50J6,SECC,T1.6,-,-	2		S.N.A
2-7	AA64-00698B	CABINET-BACK, TOP;50J6,HIPS,VO,GRY,G4309	1		
2-8	AA63-00212C	COVER-CONNECTOR;HIPS,VO,GRAY G4309	1		S.N.A
2-9	AA63-00196C	COVER-DUST;50J6,HIPS,VO,GRAY G4309	1		S.N.A
2-10	AA63-00599A	COVER-BACK;507W,HIPS,VO,GRY,G4309	1		
3-1	AA64-00548D	CABINET-MAIN;43J6,HIPS,VO,GRY	1		S.N.A
3-2	BP61-00082A	HOLDER-FRONT,RIGHT;507W,HIPS HB,GRAY	1		S.N.A
3-3	BP61-00083A	HOLDER-FRONT,LEFT;507W,HIPS HB,GRAY	1		S.N.A
3-4	BP60-00018A	SPACER-LENS;50L2,PU FORM VO,BLK	1		S.N.A
3-5	AA61-00853B	BRACKET-SUPPORT,L;50J6,SECC-1,T1.6,NTR	1		S.N.A
3-6	AA61-00852B	BRACKET-SUPPORT,R;50J6,SECC-1,T1.6,NTR	1		S.N.A
3-8	BP61-00084A	HOLDER-BACK,RIGHT;507W,HIPS VO,GRAY	1		S.N.A
3-9	BP61-00085A	HOLDER-BACK,LEFT;507W,HIPS VO,GRAY	1		S.N.A
3-10	AA61-00165B	BRACKET-GRILLE;43J6,SECC-1,T1.0,-,-,BLK,	4		S.N.A
3-11	3001-001144	SPEAKER;25W,70HM,88DB,1.6KHZ	2		
3-12	3001-001282	SPEAKER;25W,80HM,90DB,55HZ	2		
3-13	AA63-60117A	SPACER-FOOT;SVP403J,NEOPRENE,-,-,-,BLK,-	2		S.N.A
3-14	AA61-00524B	BRACKET-SUPPORT;43J6,SECC-1,T1.6,-,-,CLR	1		S.N.A
3-15	AA61-00678B	HOLDER-BOSS;43/50L2,HIPS,NTR,HB	2		S.N.A
3-16	BP96-00178A	ASSY COVER P-TERMINAL BOARD;50L2,LCD,HIP	1		S.N.A
4-1	BP64-00096D	WINDOW-LED;50L2,GUJU,ACRYL,T2.0,HALF MIR	1		S.N.A
4-2	BP63-00013A	COVER-DECO,LED;507W,ABS HB,BLK	1		S.N.A
4-3	BP64-00071A	INDICATOR LED;507W,ACRYL	1		S.N.A
4-4	BP63-00012A	COVER-GRILLE;507W,HIPS,HB,GRAY	1		S.N.A
4-5	AA61-00206A	MAGNET-GRILLE;43J6,PI15X3T,-,-,-,-	4		S.N.A
4-6	AA61-00650B	HOLDER-MAGNET, TOP;50L2,ABS,HB,G3676	4		S.N.A
5-1	AA64-00547C	CABINET-BACK, BOT;43L2,HIPS,VO,G4309	1		
5-2	AA61-10379B	BRACKET-COVER;SP43J6,SECC-1,T1.0,-,-,-,-	1		S.N.A
5-3	BP61-00163A	BRACKET-DUST;50L2,SPC,T0.5	1		S.N.A
5-4	BN63-00332A	COVER-LAMP;50L2HX,HIPS,VO,G4309	1		S.N.A
6-1	BP91-00760B	ASSY MISC-ENGINE,MECHA;SP50L2HX/XEC,L63A	1		S.N.A

2-3 SP61L2HX/XEC



No	Code No	Description;Specification	Q'ty	Remark	S.N.A
1-1	BP96-00157L	ASSY COVER P-GRILL;61L2,HIPS,HB,GRY,SV01	1		S.N.A
1-2	BP96-00158J	ASSY COVER P-FRONT;61L2,HIPS,HB,GRY,DGM1	1		S.N.A
1-3	BP64-00072A	KNOB-FAMILY;617W,ABS HB,GRAY	1		
1-4	BP64-00074A	KNOB-HOLDER;617W,ABS HB,GRAY	1		
1-6	BP64-00098A	SCREEN FRESNEL;617W,PMMA,1381*790,T1.5	1		
1-7	BP64-00099A	SCREEN LENTI;61W,PMMA,1381*790,T2.1	1		
1-8	BP61-00097A	BRACKET-SCREEN,BOT;617W,SECC-1,T1.6,BL	1		S.N.A
1-9	BP61-00092A	BRACKET-SCREEN,SIDE;617W,AL6063 EXTR,BLK	2		S.N.A
1-10	BP61-00096A	BRACKET-SCREEN,TOP;617W,AL6063 EXTR,BLK	1		S.N.A
1-11	BP67-00043A	MIRROR-FRONT,DM1;61,GLASS,1197*678*629,	1		
1-12	BP61-00151A	BRACKET-MIRROR,ASSY;617W,BLK	1		
2-1	BN63-00373C	COVER-BACK;61W DLP,HIPS,V0,GRAY,DG-703P	1		
3-1	AA64-00548D	CABINET-MAIN;43J6,HIPS,V0,GRY	1		S.N.A
3-2	BP61-00104A	BRACKET-FRONT,R;617W,SECC-1,T1.6,CLR	1		S.N.A
3-3	BP61-00127A	BRACKET-FRONT,L;617W,SECC-1,T1.6,CLR	1		
3-4	BP60-00020A	SPACER-DUCT,OUT;50L2,CR SPONGE,BLK	2		S.N.A
3-5	AA61-00853B	BRACKET-SUPPORT,L;50J6,SECC-1,T1.6,NTR	1		S.N.A
3-6	AA61-00852B	BRACKET-SUPPORT,R;50J6,SECC-1,T1.6,NTR	1		S.N.A
3-7	BP61-00105A	HOLDER-BACK,R;HIPS V0,GRAY,DG-703P	1		
3-8	BP61-00106A	HOLDER-BACK,L;HIPS V0,GRAY,DG-703P	1		
3-9	AA61-00165B	BRACKET-GRILLE;43J6,SECC-1,T1.0,-,-,BLK,-	4		S.N.A
3-10	3001-001144	SPEAKER;25W,70HM,88DB,1.6KHZ	2		
3-11	3001-001282	SPEAKER;25W,80HM,90DB,55HZ	2		
3-12	AA63-60117A	SPACER-FOOT;SVP403J,NEOPRENE,-,-,-,BLK,-	2		S.N.A
3-13		ASSY MISC P-SUPPORT BACK 1	1		S.N.A
3-14	AA61-00678B	HOLDER-BOSS;43/50L2,HIPS,NTR,HB	2		S.N.A
3-15	BP96-00178A	ASSY COVER P-TERMINAL BOARD;50L2,LCD,HIP	1		S.N.A
4-1	AA64-00547C	CABINET-BACK,BOT;43L2,HIPS,V0,G4309	1		
4-2	AA61-10379B	BRACKET-COVER;SP43J6,SECC-1,T1.0,-,-,-,-	1		S.N.A
4-3	BP61-00163A	BRACKET-DUST;50L2,SPC,T0.5 1	1		S.N.A
4-4	BN63-00332A	COVER-LAMP;50L2HX,HIPS,V0,G4309	1		S.N.A
5-1	BP91-00838C	ASSY MISC-ENINGE,MECHA;61 LCD ENGINE,PH	1		S.N.A