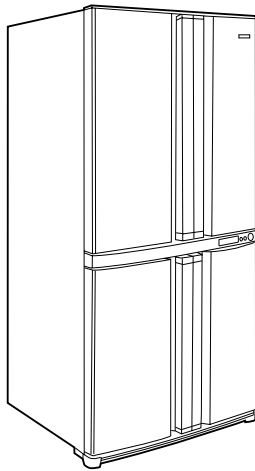


# SHARP SERVICE MANUAL

## Refrigerator-freezer

### MODELS



- SJ-F72PC-BE/SL/WH**
- SJ-F73PE-BE/SL/WH**
- SJ-F74PS-SL**
- SJ-F77PC-BE/SL/WH**
- SJ-F78PE-BE/SL/WH**
- SJ-F79PS-SL**

DESTINATION ..... E

#### Refrigerant; HFC-134a

Refer to "HFC-134a COOLING UNIT" Service Manual for handling this refrigerant.

### CONTENTS

#### CHAPTER 1. ENERGY LABEL/INSTALATION

- [1] ENERGY LABEL ..... 1-1
- [2] INSTALATION ..... 1-1

#### CHAPTER 2. SPECIFICATIONS

#### CHAPTER 3. FICHE

#### CHAPTER 4. DESIGNATION OF VARIOUS PARTS

- [1] EXTERNAL DESCRIPTION..... 4-1
- [2] CONSTRUCTIONS ..... 4-2

#### CHAPTER 5. LIST OF ELECTRICAL PARTS

#### CHAPTER 6. DIMENTIONS

- [1] OUTER DIMENTIONS AND CLEARANCE... 6-1
- [2] INNER DIMENTIONS ..... 6-1

#### CHAPTER 7. WIRING DIAGRAM

- [1] WIRING DIAGRAM ..... 7-1
- [2] ELECTRIC ACCESSORIES LAYOUT..... 7-2

#### CHAPTER 8. ASSEMBLING PROCEDURES OF MAIN PARTS AND CAUTIONS

- [1] R CONTROL COV. ASS'Y ..... 8-1
- [2] C-PARTITION FFB, FAN LOUVER AND E.V COVER ASSEMBLY ..... 8-2
- [3] DEFROST HEATER ..... 8-4

#### CHAPTER 9. COOLING UNIT

- [1] COOLING UNIT ..... 9-1
- [2] LOCATION ..... 9-2

#### Parts Guide

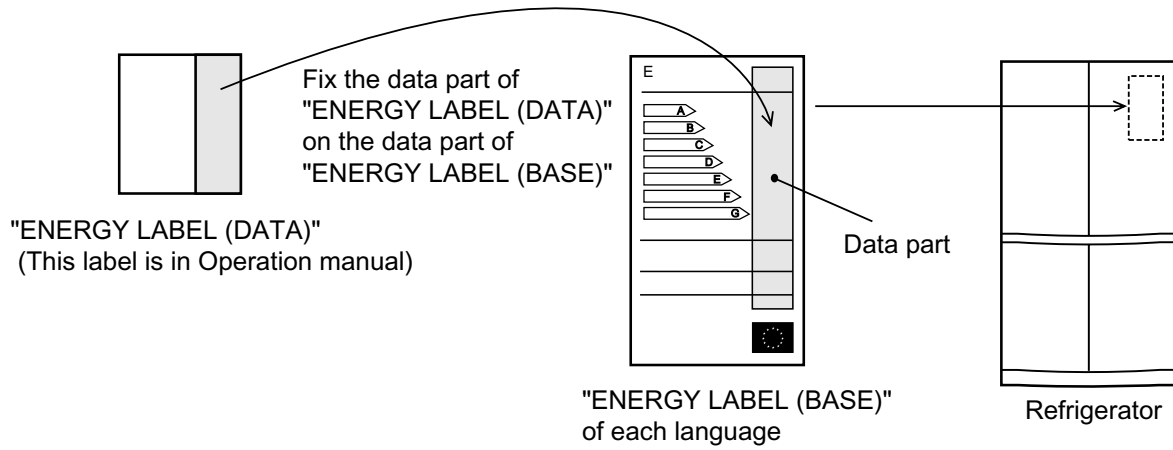
Parts marked with "▲" are important for maintaining the safety of the set. Be sure to replace these parts with specified ones for maintaining the safety and performance of the set.

## CHAPTER 1. ENERGY LABEL/INSTALATION

### [1] ENERGY LABEL

Usage of "the ENERGY LABEL"

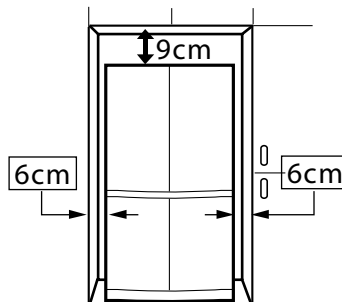
- When displaying this refrigerator in the shop-window, attach the "ENERGY LABEL" to it in the following procedure.



### [2] INSTALATION

Free standing type

- To ensure adequate ventilation for this refrigerator, install with 6 cm space at the rear and both sides, with a minimum space of 9 cm above the refrigerator.



- This refrigerator shall be used under the ordinary place condition between +5 °C and +38 °C of ambient temperature, and also not be left under -10 °C for long days.
- To be used this refrigerator within the range of the rated voltage  $\pm 6\%$

## CHAPTER 2. SPECIFICATIONS

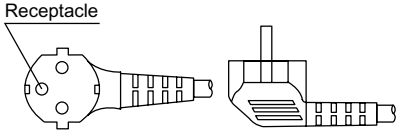
		SJ-F74PS	SJ-F73PE	SJ-F72PC	SJ-F79PS	SJ-F78PE	SJ-F77PC	
Type		4-Door						
Outer dimensions	Height	1720(67.7")			1830(72.0")			
	Width	890(35.0")			890(35.0")			
	Depth	770(30.3")			770(30.3")			
Rated storage volume		556liter (19.6 cu.ft)			605liter (21.4cu.ft)			
Rated gross volume		573liter (20.2 cu.ft)			625liter (22.1cu.ft)			
Defrosting	System	Heater system						
	Start	Automatic						
	Finish	Automatic						
Temperature control		Automatic (Adjustable)						
No-frost freezer		Yes						
Interior lamp		4						
Caster		4						
Evaporating pan		1 (unremovable)						
Refrigerator Compartment	R-shelf ass'y	2						
	V-shelf ass'y	1						
	Bttl rack ass'y	1		-	1		-	
	Fruit case ass'y	1						
	Fresh case ass'y	1						
	V-case ass'y	1						
	Door pocket ass'y	3						
	Btl-pok L ass'y	1						
	Btl-pok R ass'y	1						
	U-pok door	1						
	Utility pok ass'y	1			2			
	Egg tray	1						
Freezer Compartment	Ice cube maker	1	2		1	2		
	Quick ice maker	1	-		1	-		
	Ice storage ass'y	2						
	F-case S ass'y	3						
	F-case L ass'y	2						
Control panel	Plusmacluster	Yes						
	Express Ice making	Yes		No	Yes		No	
	Express Freezing	Yes		No	Yes		No	
	Vacation mode	Yes		No	Yes		No	
	Door alarm	Yes						
	Timer	Yes						
	Temp. control	Yes						
	Child lock	Yes						
Aluminum panel		Yes						
Deodorizing unit		Yes(Honeycomb type)						

SJF79PSSL

RATING

Items		SJ-F74PS	SJ-F73PE	SJ-F72PC	SJ-F79PS	SJ-F78PE	SJ-F77PC
Rated voltage	(V~)	220-240					
Rated frequency	(Hz)	50					
Climate class		ST					
Rated current	(A)	0.8-0.9					
Rated input of heating systems	(W)	173-206					
Refrigerant (Charging quantity) [Flammable]		R600a (52g)					
Insulation blowing gas [Flammable]		Cyclo pentane (HC)					
Net Weight	(kg)	114				117	

PLUG TYPE

Plug cord	2 pin +earth	
Plug type	CS	
Destination mark	E	

COLOR

Items	-BE	-SL	-WH
Outside color	Beige	Silver	White
Inside color	White		

## CHAPTER 3. FICHE

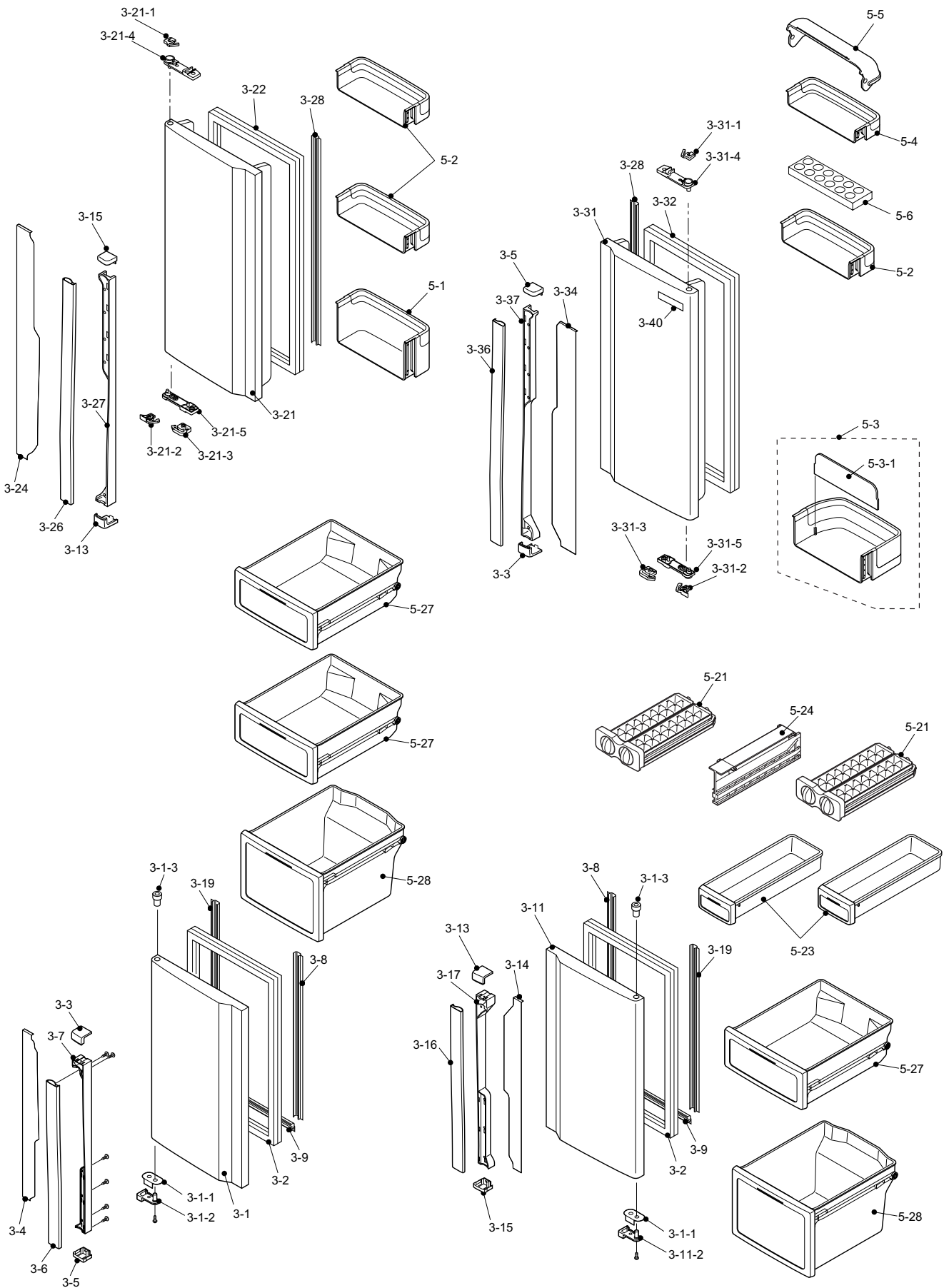
## THE FICHE (according to ANNEX II : 94/2/EC)

NO.	Items	Description		Remarks
1	Trade mark	<b>SHARP</b>	<b>SHARP</b>	
2	Model name	SJ-F72PC,SJ-F73PE,SJ-F74PS	SJ-F77PC,SJ-F78PE,SJ-F79PS	
3	Type	Category; 7	Category; 7	fridge / freezer
4	Energy efficiency class	A+	A+	A++/A+/A~G
5	Eco-award mark	—	—	880/92
6	Energy consumption (220V 50Hz at 25°C)	450 kWh/year	465 kWh/year	EN153
7	Net storage volume of fresh food storage compartment	345 L	394 L	
8	Net storage volume of frozen food storage compartment	211 L	211 L	<b>* **</b>
9	Star rating of frozen food compartment	4-STAR <b>* **</b>	4-STAR <b>* **</b>	
10	No frost	No frost	No frost	
11	Temperature rise time	11 h	11 h	at 25 °C
12	Freezing capacity	9.5 kg /24h	9.5 kg /24h	at 25 °C
13	Climate class	ST	ST	
14	Noise	38 dB(A) re 1 pw	38 dB(A) re 1 pw	86/594/EEC

(96/57/EC)

15	Maximum allowable electricity consumption (E <sub>max</sub> )	1017 kWh/year	1066 kWh/year	E max
		(2.79)	(2.92)	(kWh/day)

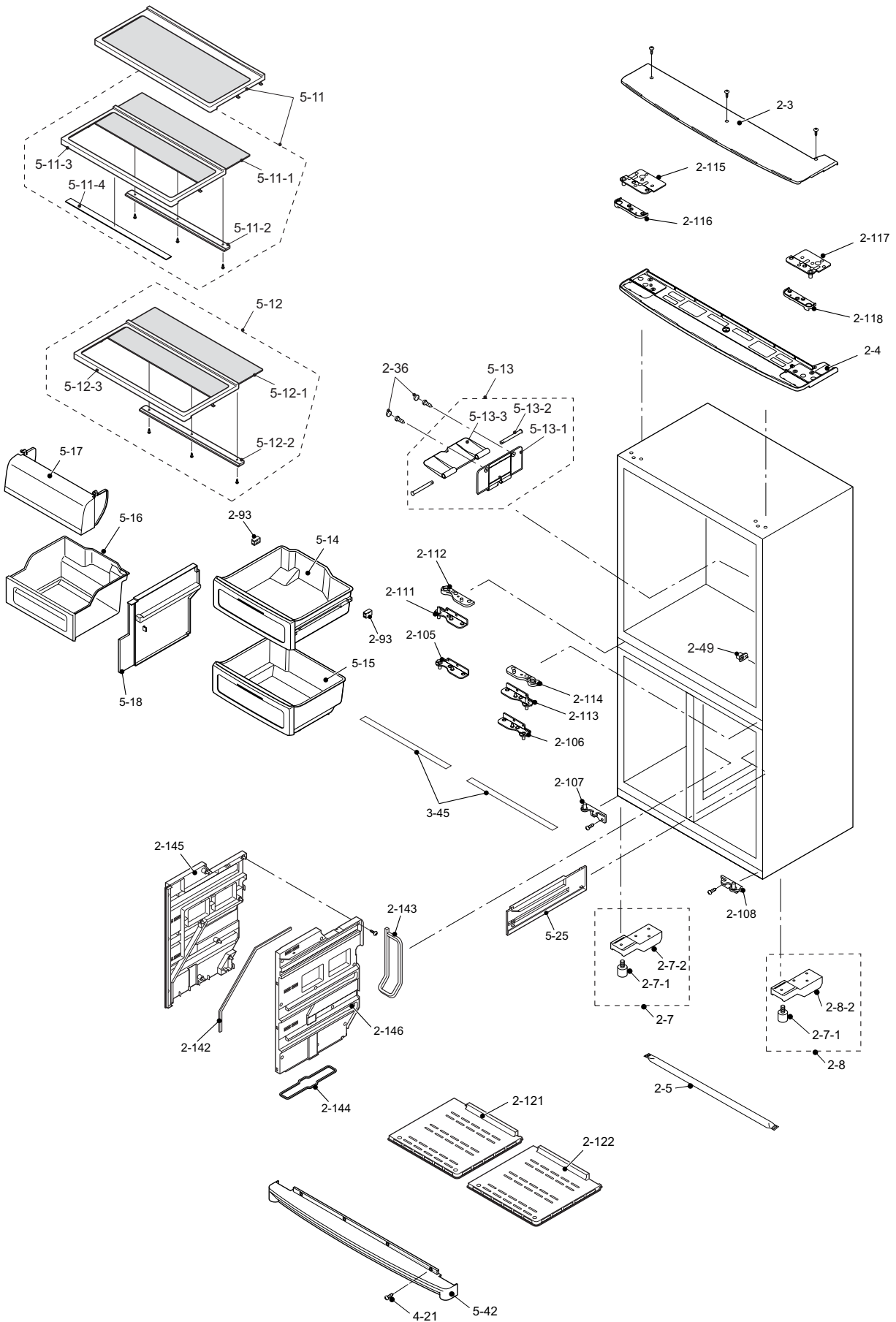
[6] SJF73PE DOOR



SJF79PSSL

NO.	PARTS CODE	PRICE RANK	NEW MARK	PART RANK	DESCRIPTION
<b>[6] SJF73PE DOOR</b>					
3-1	FDORFB904CBKZ	BQ			F-door l ass'y [SL]
3-1	FDORFB906CBKZ	BQ			F-door l ass'y [BE]
3-1	FDORFB908CBKZ	BQ			F-door l ass'y [WH]
3-1-1	LSTPPA008CBM0	AD			F-door stopper r
3-1-2	LSTPPA146CBFA	AF			Fd-stp spring l
3-1-3	NBRGPA022CBFA	AC			Nylon bearing 3s
3-2	FPACGA431CBYA	AT			F door packing
3-3	HDECQA499CBTA	AK			Hd-cap rbr
3-4	HDECQA500CBBR	AN			Fd-trim l
3-5	HDECQA505CBTA	AK			Hd-cap rtr
3-6	JHNDPA214CBPA	AG			Fd-handle l
3-7	LPLTPA400CBFA	AT			Hd-base fl [SL]
3-7	LPLTPA400CBFB	AU			Hd-base fl [BE]
3-7	LPLTPA400CBFC	AU			Hd-base fl [WH]
3-8	PPACGA226CBZA	AM			F-sub packing a
3-9	PPACGA227CBZA	AK			F-sub packing b
3-11	FDORFB905CBKZ	BQ			F-door r ass'y [SL]
3-11	FDORFB907CBKZ	BQ			F-door r ass'y [BE]
3-11	FDORFB909CBKZ	BQ			F-door r ass'y [WH]
3-11-2	LSTPPA147CBFA	AF			Fd-stp spring r
3-13	HDECQA501CBTA	AK			Hd-cap rbl
3-14	HDECQA502CBBR	AN			Fd-trim r
3-15	HDECQA503CBTA	AK			Hd-cap rtl
3-16	JHNDPA215CBPA	AG			Fd-handle r
3-17	LPLTPA401CBFA	AV			Hd-base fr [SL]
3-17	LPLTPA401CBFB	AU			Hd-base fr [BE]
3-17	LPLTPA401CBFC	AU			Hd-base fr [WH]
3-19	PPACGA241CBZA	AK			F-sub packing c
3-21	FDORRB737CBKZ	BR			R-door l ass'y [SL]
3-21	FDORRB743CBKZ	BR			R-door l ass'y [BE]
3-21	FDORRB744CBKZ	BR			R-door l ass'y [WH]
3-21-1	LSTPPA150CBFA	AF			Stp-spring tl
3-21-2	LSTPPA151CBFA	AF			Stp-spring bl
3-21-3	LSTPPA152CBFA	AF			R lock spring l
3-21-4	MSLI-A070CBFA	AE			Door cam tl
3-21-5	MSLI-A071CBFA	AE			Door cam bl
3-22	FPACGA433CBYZ	AW			R door packin l
3-24	HDECQA507CBBR	AQ			Rd-trim l
3-26	JHNDPA218CBPA	AK			Rd-handle l
3-27	LPLTPA406CBFA	AV			Hd-base rl [SL]
3-27	LPLTPA406CBFB	AV			Hd-base rl [BE]
3-27	LPLTPA406CBFE	AV			Hd-base rl [WH]
3-28	PPACGA234CBZZ	AM			R-sub packing
3-31	FDORRB738CBKZ	BR			R-door r ass'y [SL]
3-31	FDORRB745CBKZ	BR			R-door r ass'y [BE]
3-31	FDORRB746CBKZ	BR			R-door r ass'y [WH]
3-31-1	LSTPPA148CBFA	AF			Stp-spring tr
3-31-2	LSTPPA149CBFA	AF			Stp-spring br
3-31-3	LSTPPA153CBFA	AF			R lock spring r
3-31-4	MSLI-A068CBFA	AE			Door cam tr
3-31-5	MSLI-A069CBFA	AE			Door cam br
3-32	FPACGA443CBYZ	AX			R door packin r
3-34	HDECQA508CBBR	AQ			Rd-trim r
3-36	JHNDPA219CBPA	AK			Rd-handle r
3-37	LPLTPA407CBFA	AV			Hd-base rr [SL]
3-37	LPLTPA407CBFB	AV			Hd-base rr [BE]
3-37	LPLTPA407CBFC	AV			Hd-base rr [WH]
3-40	HBDGDB006CBZA	AZ			Badge
5-1	FPOK-A242CBKZ	AX			Btl-pok l ass'y
5-2	FPOK-A243CBKZ	AV			Door pocket ass'y
5-3	FPOK-A244CBKZ	AZ			Btl-pok r ass'y
5-3-1	LSTYPA044CBFA	AL			B-pok partition
5-4	FPOK-A245CBKZ	AT			Utility pok ass'y
5-5	GDORPA078CBFA	AN			U-pok door
5-6	UTNA-A397CBFA	AH			Egg tray
5-21	FSRA-A244CBYZ	AP			Ice cube maker
5-23	FYOK-A232CBKZ	AV			Ice storage assy
5-24	LSTYPA043CBFA	AW			I-case stay
5-27	FYOK-A231CBKZ	BC			F-case s ass'y
5-28	FYOK-A230CBKZ	BE			F-case l ass'y

[7] SJF73PE CABINET1





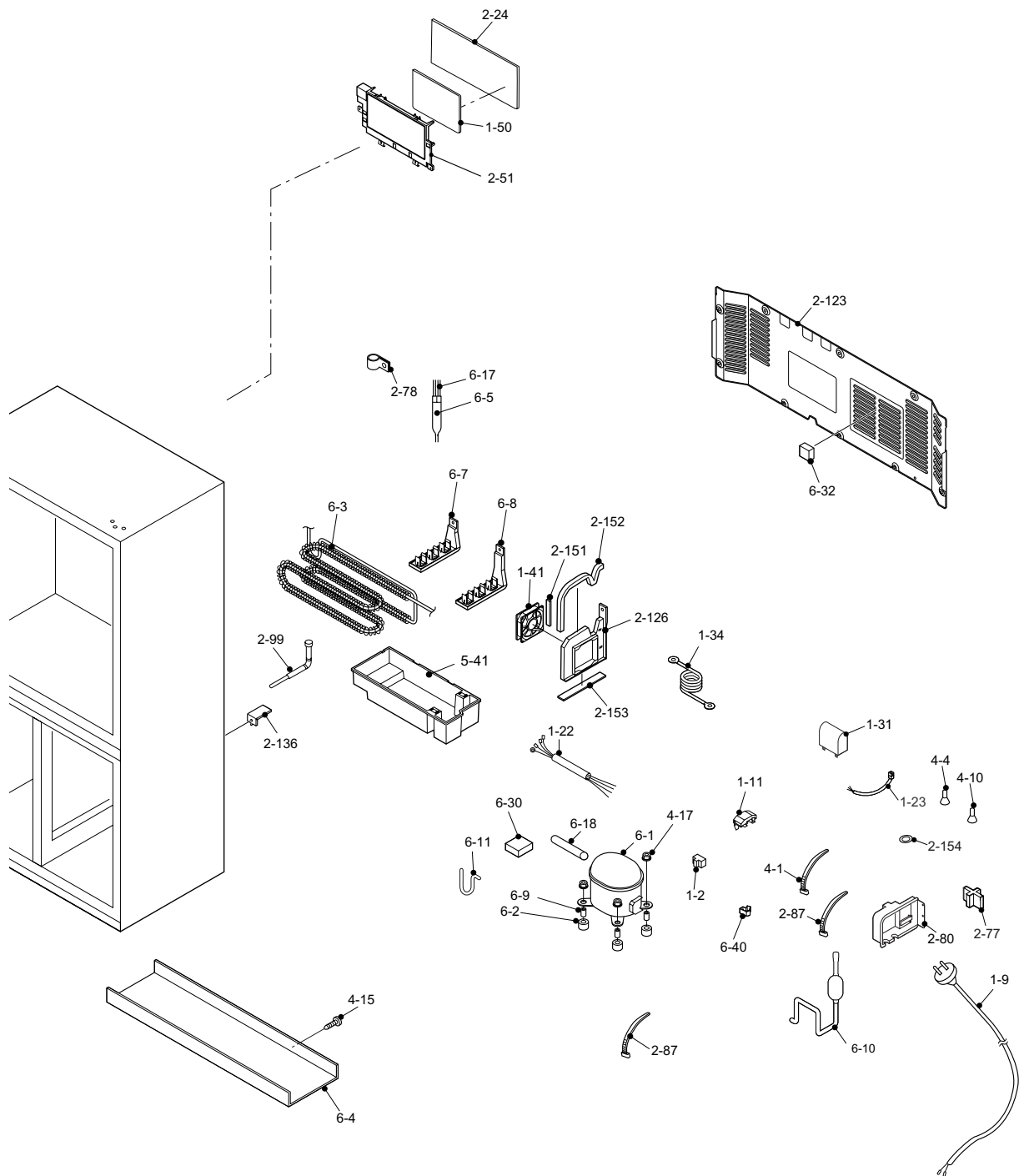
NO.	PARTS CODE	PRICE RANK	NEW MARK	PART RANK	DESCRIPTION
<b>[7] SJF73PE CABINET1</b>					
2-3	PCOVPA398CBFB	AQ			Hinge cover [SL]
2-3	PCOVPA398CBFC	AQ			Hinge cover [BE]
2-3	PCOVPA398CBFE	AQ			Hinge cover [WH]
2-4	LPLTPA399CBFB	AX			Hinge support [BE]
2-4	LPLTPA399CBFC	AX			Hinge support [WH]
2-4	LPLTPA416CBTA	AX			Hinge support-t [SL]
2-5	JHNDMA025CBPZ	AE			Carrying bar
2-7	FLEGPA127CBKZ	AN			Leg holder-ls k
2-7-1	FAJS-A028CBKZ	AZ			Adjustable leg ass'y
2-7-2	FLEGPA123CBYZ	AH			Leg holder-lk
2-8	FLEGPA128CBKZ	AN			Leg holder-rs k
2-8-2	FLEGPA124CBYZ	AH			Leg holder-rk
2-36	PCAP-A006CBFW	AB			Screw cover
2-49	LSTPPA108CBFA	AC			Chilled stopper
2-93	PCAP-A068CBFA	AC			C sliding cap a
2-105	DHNG-A537CBMZ	BA			F-hinge lt assy
2-106	DHNG-A538CBMZ	BA			F-hinge rt assy
2-107	DHNG-A539CBMZ	BA			F-hinge lb assy
2-108	DHNG-A540CBMZ	BA			F-hinge rb assy
2-111	FHNG-A231CBMZ	AH			R-hinge lbk
2-112	MSLI-A072CBFA	AE			Hinge cam bl
2-113	FHNG-A232CBMZ	AH			R-hinge rbk
2-114	MSLI-A073CBFA	AE			Hinge cam br
2-115	FHNG-A233CBYZ	AH			R-hinge ltk
2-116	MSLI-A074CBFA	AE			Hinge cam tl
2-117	FHNG-A234CBYZ	AH			R-hinge rtk
2-118	MSLI-A075CBFA	AE			Hinge cam tr
2-121	GCOV-A280CBFA	AV			F-ret cover bl
2-122	GCOV-A281CBFA	AV			F-ret cover br
2-142	PSEL-C558CBZZ	AD			Sealer c
2-143	PSEL-C559CBZZ	AD			Sealer d
2-144	PSEL-C560CBZZ	AD			Sealer e
2-145	PSKR-A327CBFA	AU			V-partition lfb
2-146	PSKR-A328CBFA	AU			V-partition rfb
3-45	PPACGA244CBZA	AF			F-sub packing d
4-21	LX-TZA091CBTA	AE			Special screw [SL]
4-21	LX-TZA091CBTC	AE			Special screw [BE]
4-21	LX-TZA091CBTE	AE			Special screw [WH]
5-11	FTNA-A418CBKZ	BE			R-shelf ass'y
5-11-1	UTNA-A396CBRA	AY			R-glass shelf
5-11-2	UWAKPA019CBFA	AM			G guard rb
5-11-3	UWAKPA021CBFA	AT			G guard r
5-11-4	LPLTMA753CBPZ	AP			R shelf support
5-12	FTNA-A417CBKZ	AZ			V-shelf ass'y
5-12-1	UTNA-A395CBRA	AY			V-glass shelf
5-12-2	UWAKPA018CBFA	AL			G guard vb
5-12-3	UWAKPA020CBFA	AT			G guard v
5-13	FTNA-A419CBKZ	AR			Bttl rack ass'y
5-13-1	LHLD-A712CBFA	AK			B-r holder
5-13-2	NSFT-A041CBFA	AE			B-r shaft
5-13-3	UTNA-A398CBFA	AK			Bottle rack
5-14	FYOK-A227CBKZ	AZ			Fruit case assy
5-15	FYOK-A228CBKZ	AZ			Fresh case assy
5-16	FYOK-A229CBKZ	AZ			V-case ass'y
5-17	GFTA-A101CBFA	AN			V-case door
5-18	LSTYPA042CBFA	AT			R-case stay
5-25	LRAL-A092CBFA	AM			Ice room rail
5-42	HGRL-A243CBFB	AS			Base cover [SL]
5-42	HGRL-A243CBFC	AS			Base cover [BE]
5-42	HGRL-A243CBFE	AS			Base cover [WH]



SJF79PSSL

NO.	PARTS CODE	PRICE RANK	NEW MARK	PART RANK	DESCRIPTION
<b>[8] SJF73PE CABINET2</b>					
1-1	RH-HXA066CBZZ	AT			F-thermistor
1-3	RH-HXA065CBZZ	AT			R-thermistor
1-4	DTHM-A031CBKZ	AX			Damper ass'y
1-5	RH-HXA067CBZZ	AT			Def-thermistor
1-6	RMOTRA096CBZZ	BE			F fan motor
1-7	QCNW-B148CBZZ	AK			Lead lamp
1-8	FLMP-A003CBZZ	AM			Lamp ass'y
1-10	QSW-LA015CBZZ	AQ			Reed sw
1-17	FFS-TA087CBKZ	AM			Fuse ass'y
1-21	FHETBA193CBZZ	BA			Defrost heater
1-26	QCNW-B146CBZZ	AK			Lead r-c box
1-27	RMOTRA095CBZZ	BA			R fan motor
1-42	QCNW-B147CBZZ	AF			Lead r-louwer
1-45	FTRN-A014CBKZ	BD			Ionaizer-k
1-52	QCNW-B150CBZZ	AH			Pwb-harness
1-55	FPWB-A424CBKZ	BP			Lcd pwb s ass'y
2-1	HPNL-A440CBTA	AQ			Con-panel t
2-2	GDAI-A078CBTA	AU			Control base
2-16	GCOV-A282CBFA	AV			Ev-cover
2-20	PSEL-C573CBZZ	AE			E.v.pe-al sheet
2-21	PFPPB565CBFZ	AE			Ev-cover insu
2-22	PSEL-C569CBZZ	AC			Ev-cover sealer
2-25	PCOV-A335CBFA	AM			R lamp cover l
2-26	PCOV-A336CBFA	AM			R lamp cover r
2-27	GCOVPA198CBFA	AT			R-c box cover
2-28	HGRL-A244CBFA	AX			Fan louwer
2-34	PFIL-A047CBEZ	AC			Deodorizer
2-37	LHLD-A715CBFA	AF			Screw cover
2-38	PGID-A169CBFZ	AG			R air guider a
2-39	PGID-A170CBFZ	AE			R air guider b
2-47	LHLD-A714CBFZ	AR			Plasma holder
2-55	MLOV-A051CBFA	AV			R-louwer
2-56	PFPPB568CBFZ	AH			R-louwer insu
2-57	PFPPB588CBFZ	AE			R-louwer insu s
2-58	PSEL-C566CBZZ	AC			A-sealer r-lv a
2-66	PSHEMA296CBPZ	AC			Heater cover
2-67	LPLTPA428CBPZ	AQ			Heater support
2-72	PSEL-C562CBZZ	AC			A-sealer rc-a
2-74	PSEL-C564CBZZ	AG			A-sealer rc-c
2-95	LANG-A064CBPZ	AF			Eva holder 75
2-97	PCOV-A340CBFA	AF			R con cover s
2-100	GCOVPA199CBFZ	AF			Connect cover
2-120	GCOV-A279CBFA	AM			F return cover
2-125	LPLTMA741CBPZ	AY			Al panel
2-127	LHLD-A405CBEA	AC			Clip
2-131	JBTN-A030CBMA	AH			Button
2-132	JBTN-A031CBMA	AK			Button l
2-133	JBTN-A032CBMA	AH			Button j
2-138	PSEL-C600CBZZ	AD			Ev-cov.sealer b
2-139	PSEL-C601CBZZ	AE			Ev-cov.sealer c
2-140	PSEL-C640CBZZ	AD			Ev-c sealer l
2-141	PSEL-C661CBZZ	AD			Sealer fm
2-147	LHLD-A713CBFA	AE			Lcd-pwb holder
2-148	PSEL-C669CBZZ	AD			A-sealer rc-d
2-149	PSEL-C081CBEZ	AA			A-sealer ag4
2-150	PSHEMA306CBPZ	AQ			Refraction al
6-12	PEVA-A156CBZZ	BE			Evaporator
6-31	PKYU-A035CBE0	AG			Sp-butyl h
90-2	TLAB-A876CBRZ	AC			Warning label

[9] SJF73PE BACK SIDE



NO.	PARTS CODE	PRICE RANK	NEW MARK	PART RANK	DESCRIPTION
<b>[9] SJF73PE BACK SIDE</b>					
1-2	RSTT-A179CBZZ	AR			Ptc relay
1-9	QACC-A173CBZZ	AY			Source cord
1-11	RHOG-A189CBEZ	AZ			Protector
1-22	FCNW-A860CBZZ	AH			Relay wire assy
1-23	QCNW-A916CBZZ	AE			Relay wire sc
1-31	RC-EZA190CBEZ	AW			Running capacitor
1-34	QCNW-A968CBZZ	AC			Earth wire
1-41	RMOTRA097CBZZ	BA			C fan motor
1-50	FPWB-A429CBKZ	BU			Pwb-s ass'y
2-24	GCOVPA200CBFB	AR			Terminal cover
2-51	LHLD-A711CBFA	AQ			Pwb holder