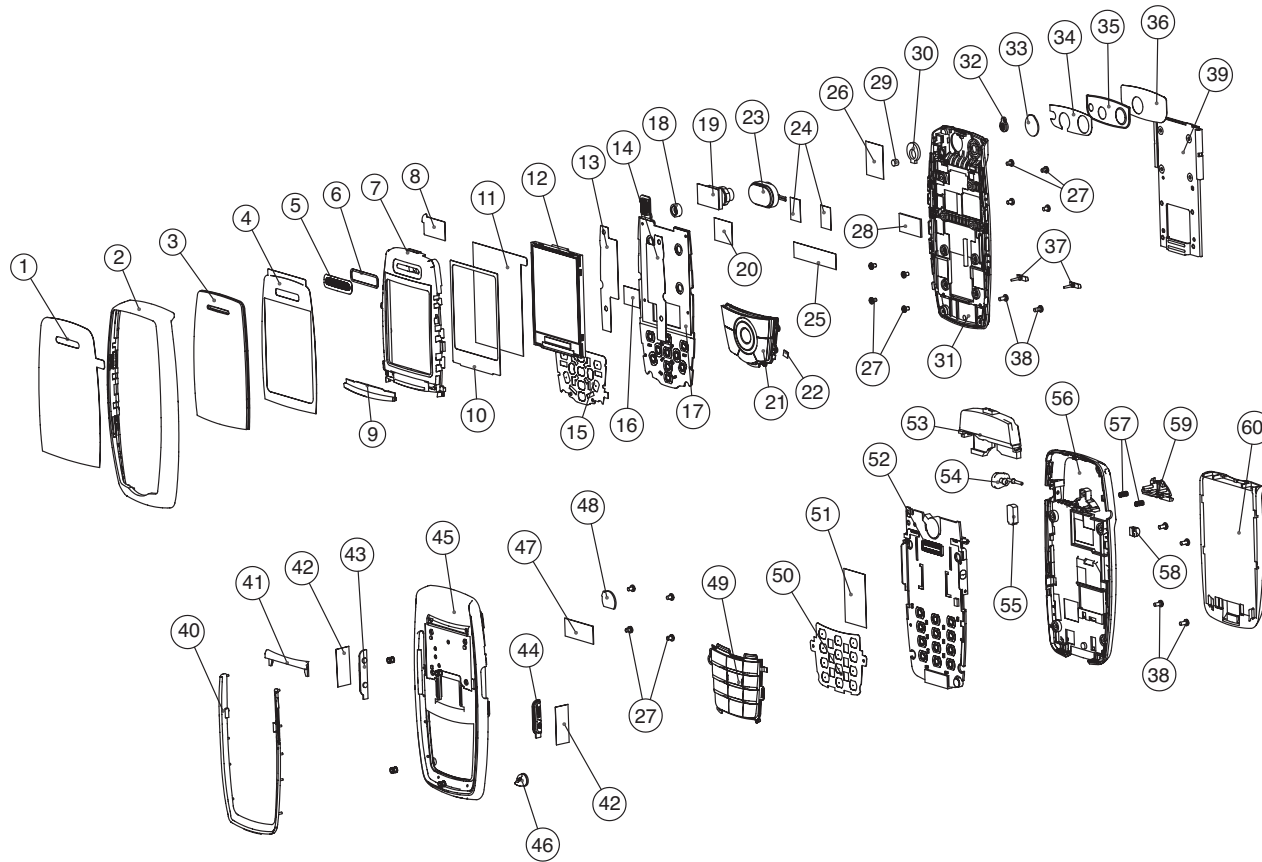


12. EXPLODED VIEW & REPLACEMENT PART LIST

12.1 EXPLODED VIEW



NO	DESCRIPTION	DRAWING NO	Q'TY
1	TAPE_PROTECTION	MTAB008280I	1
2	COVER_SLIDE(UPPER)	MCJW00051**	1
3	WINDOW_LCD	MWAC00579**	1
4	TAPE_WINDOW	MTAD004050I	1
5	FILTER_SPEAKER	MFB0001750I	1
6	TAPE(FILTER_SPEAKER)	MTAZ008570I	1
7	FRAME(lcd)	MFEZ000680I	1
8	PAD_CAMERA_(BOTTOM)	MPBT002060I	1
9	GRIP	MGCZ000090I	1
10	PAD_LCD	MPBG003740I	1
11	TAPE_PROTECTION	MTAB008940I	1
12	LCD MOUDLE	SVLM001370I	1
13	TAPE(TAPE_LCD_TAPE_L)	MTAZ008950I	1
14	TAPE(TAPE_LCD_TAPE_R)	MTAZ010880I	1
15	DOME ASSY METAL_SLIDE	ADCA004040I	1
16	TAPE(TAPE_LCD_MODULE)	MTAZ009960I	1
17	PCB ASSY_KEYPAD	SAFY004660I	1
18	HOLDER_MIKE	MHGFO00370I	1
19	CAMERA	SVCY000730I	1
20	Insulator	MIDZ007920I	1
21	BUTTON ASSY FUNCTION	ABGB000260I	1
22	Gasket shield form	MGAD010610I	1
23	SPEAKER	SUSY001790I	1
24	Insulator	MIDZ007950I	2
25	Insulator	MIDZ007930I	1
26	TAPE_PROTECTION(CAMERA window)	MTAB009730I	1
27	SCREW MACHINE(M14 L20)	GMEY001040I	12
28	PAD_FLEXIBLE PCB	MPBF001260I	1
29	GAUZE(GAUZE_CMIKE)	MGBY000350I	1
30	PAD_CAMERA	MPBT002000I	1
31	COVER_SLIDE(LOWER)	MCJV00045**	1
32	LENS_FLASH	MLCE000500I	1
33	LENS_CAMERA	MLCD000550I	1
34	TAPE_DECO_CAMERA	MTAA009550I	1
35	DECO_CAMERA	MDAD001550I	1
36	TAPE_PROTECTION(DECO_CAMERA)	MTAB008730I	1
37	STOPPER	MSGY001370I	2
38	SCREW MACHINE(M14 L30)	GMZ001770I	6
39	RAIL	MRAY00029**	1
40	SUPPORT(POM)	MSHY00080**	1
41	STOPPER	MSGY001240I	1
42	TAPE_PROTECTION	MTAB002020I	2
43	BUTTON VOLUME	MBJN000630I	1
44	BUTTON FUNCTION	MBJC001710I	1
45	COVER_FRONT	MCJK00483**	1
46	PAD_MIKE	MPBH001690I	1
47	PAD(FRONT_FPCB)	MPBZ009950I	1
48	PAD(PAD_VIBRATOR_FRONT)	MPBZ010220I	1
49	BUTTON ASSY_DIAL	ABGA00051**	1
50	DOME ASSY METAL_MAIN	ADCA004050I	1
51	INSULATOR	MIDZ007820I	1
52	PCB ASSY_MAIN	SAFY014800I	1
53	ANTENNA_GSM_FIXED	SNGF001030I	1
54	CAP_EARPHONE JACK	MCCC00285**	1
55	PAD_VIBRATOR	MPBZ009930I	1
56	COVER_REAR	MCJN00432**	1
57	SPRING_COIL	MSDB000170I	2
58	CAP_MOBIL SWITCH	MCCF00284**	1
59	BAT_LOCKER	MLEA00259**	1
60	BATTERY PACK	SBPP00136**	1

12. EXPLODED VIEW & REPLACEMENT PART LIST

12.2 Replacement Parts <Mechanic component>

Note: This Chapter is used for reference, Part order is ordered by SBOM standard on GCSC

Level	Location No.	Description	Part Number	Specification	Color	Remark
1		GSM(SLIDE)	TGLL0002416		EPI BLACK	
2	AAAY00	ADDITION	AAAY0134707		EPI BLACK	
2	APEY00	PHONE	APEY0260201		EPI BLACK	
3	ABGA00	BUTTON ASSY,DIAL	ABGA0005101		Black	49
3	ACGM00	COVER ASSY,REAR	ACGM0060001	S5200 CEA REAR_ASSY	EPI BLACK	
4	MCCC00	CAP,EARPHONE JACK	MCCC0028501		EPI BLACK	54
4	MCJN00	COVER,REAR	MCJN0043201	S5200 COVER_REAR	EPI BLACK	56
4	MLEA00	LOCKER,BATTERY	MLEA0025901	S5200 BATTERY LOCKER	EPI BLACK	59
4	MPBH00	PAD,MIKE	MPBH0017401	PAD,MIKE_REAR	Black	
4	MPBZ00	PAD	MPBZ0099301	PAD_VIBRATOR	Without Color	55
4	MSDB00	SPRING,COIL	MSDB0001701	G7000	Pearl White	57
3	ACGQ00	COVER ASSY,SLIDE	ACGQ0007501		EPI BLACK	
4	ABFZ00	BRACKET ASSY	ABFZ0006201	LCD BRACKET ASSY	Black	
5	MFBC00	FILTER,SPEAKER	MFBC0017501		Black	5
5	MFEZ00	FRAME	MFEZ0006801	SLIDE UPPER_LCD FRAME	Black	7
5	MGCZ00	GRIP	MGCZ0000901		Black	9
5	MPBG00	PAD,LCD	MPBG0037401		Black	10
5	MPBT00	PAD,CAMERA	MPBT0020601	S5200_PAD,CAMERA_BOTTOM	Black	8
5	MTAD00	TAPE,WINDOW	MTAD0040501		Without Color	4
5	MTAZ00	TAPE	MTAZ0085701	TAPE_FILTER_SPEAKER	Without Color	6
4	ABGB00	BUTTON ASSY,FUNCTION	ABGB0002601		EPI BLACK	21
4	ACGK00	COVER ASSY,FRONT	ACGK0059001		EPI BLACK	
5	MBJC00	BUTTON,FUNCTION	MBJC0017101		Silver	44
5	MBJN00	BUTTON,VOLUME	MBJN0006301		Silver	43
5	MCJK00	COVER,FRONT	MCJK0048301		EPI BLACK	45
5	MPBH00	PAD,MIKE	MPBH0016901		Black	46
5	MPBZ00	PAD	MPBZ0099501	PAD_FRONT_FPCB	Black	47

12. EXPLODED VIEW & REPLACEMENT PART LIST

Level	Location No.	Description	Part Number	Specification	Color	Remark
5	MPBZ01	PAD	MPBZ0102201	PAD_VIBRATOR_FRONT	Black	48
5	MSGY00	STOPPER	MSGY0012401		Black	41
5	MSHY00	SUPPORT	MSHY0008001	SUPPORT FRONT POM	Black	40
5	MTAB00	TAPE,PROTECTION	MTAB0020202	50X83 PROTECTION TAPE	Silver	42
4	ACGR00	COVER ASSY, SLIDE(LOWER)	ACGR0004501		Black	
5	ADBY00	DECO ASSY	ADBY0007801	DECO CAMERA ASSY	Black	
6	MDAD00	DECO,CAMERA	MDAD0015501		Black	35
6	MTAA00	TAPE,DECO	MTAA0095501	TAPE DECO CAMERA	Without Color	34
5	MCJV00	COVER,SLIDE(LOWER)	MCJV0004501		EPI BLACK	31
5	MGBY00	GAUZE	MGBY0003501	GAUZE_CMIKE_LOWER	Black	29
5	MICZ00	INSERT	MICZ0025201	M1.4XP0.3, L1.43_S5200 SLIDE_LOWER	Gold	
5	MIDZ00	INSULATOR	MIDZ0079301	30 x 7 x 0.05t	Without Color	25
5	MIDZ01	INSULATOR	MIDZ0079501	10 X 7 0.05t	Without Color	24
5	MLCD00	LENS,CAMERA	MLCD0005501		Without Color	33
5	MLCE00	LENS,FLASH	MLCE0005001		Without Color	32
5	MMAA00	MAGNET,SWITCH	MMAA0005201		Metal Silver	
5	MPBF00	PAD,FLEXIBLE PCB	MPBF0012601		Black	28
5	MPBT00	PAD,CAMERA	MPBT0020001		Black	30
5	MSGY00	STOPPER	MSGY0013701	s5200_stopper_lower	Black	37
5	MTAB	TAPE,PROTECTION	MTAB0097301	s5200_protection_camera_win	Without Color	26
5	MTAB00	TAPE,PROTECTION	MTAB0087301	TAPE,PROTECTION _DECO,CAMERA	Without Color	36
4	ACGS00	COVER ASSY, SLIDE(UPPER)	ACGS0005501		EPI BLACK	
5	MCJW00	COVER,SLIDE(UPPER)	MCJW0005101		EPI BLACK	2
4	GMEY00	SCREW MACHINE,BIND	GMEY0010401	1.4 mm,2 mm,MSWR3(FN) ,N ,+ ,NYLOK	Silver	27
4	GMZZ00	SCREW MACHINE	GMZZ0017701	1.4 mm,3.0 mm,MSWR3 ,N ,+ , - ,	Silver	38
4	MGAD	GASKET,SHIELD FORM	MGAD0106101	3.0 x 2.5 x 0.3t	Without Color	22
4	MHGF00	HOLDER,MIKE	MHGF0003701		Black	18

12. EXPLODED VIEW & REPLACEMENT PART LIST

Level	Location No.	Description	Part Number	Specification	Color	Remark
4	MIDZ	INSULATOR	MIDZ0079201	s5200_lcd_fpcb_insulator,tape	Without Color	20
4	MLAC00	LABEL,BARCODE	MLAC0003401	EZ LOOKS(user for mechanical)	Without Color	
4	MRAY00	RAIL	MRAY0002902		Black	39
4	MTAB00	TAPE,PROTECTION	MTAB0082801		Without Color	1
4	MTAB01	TAPE,PROTECTION	MTAB0089401	TAPE,PROTECTION_window_inner	Without Color	11
4	MTAZ	TAPE	MTAZ0108801	S5200_lcd_tape(R)	Dark Gray	14
4	MTAZ00	TAPE	MTAZ0089501	s5200_TAPE_LCD MODULE_0.1T	Without Color	13
4	MTAZ01	TAPE	MTAZ0099601	s5200_tape_lcdmodule_0.18t	Without Color	16
4	MWAC00	WINDOW,LCD	MWAC0057901		EPI BLACK	3
6	ADCA00	DOME ASSY,METAL	ADCA0040401	DOME ASSY METAL_SLIDE	Without Color	15
3	MCCF00	CAP,MOBILE SWITCH	MCCF0028401		EPI BLACK	58
3	MLAK00	LABEL,MODEL	MLAK0006901			
5	ADCA00	DOME ASSY,METAL	ADCA0040501	DOME ASSY METAL_MAIN	Without Color	50
5	MIDZ00	INSULATOR	MIDZ0078201	S5200_Main,pcb_insulator,tape	Without Color	51
5	MLAB00	LABEL,A/S	MLAB0000601	HUMIDITY STICKER	Without Color	
5	MLAC00	LABEL,BARCODE	MLAC0003301	EZ LOOKS(use for PCB ASSY MAIN(hardware))	Without Color	

12. EXPLODED VIEW & REPLACEMENT PART LIST

<Main component>

Note: This Chapter is used for reference, Part order is ordered by SBOM standard on GCSC

Level	Location No.	Description	Part Number	Specification	Color	Remark
4	SNGF00	ANTENNA,GSM,FIXED	SNGF0010301	5.0:1 lower , -1.5 dBd , ,EGSM/DCS1800,1900MHz, Triple Band		53
4	SACE00	PCB ASSY,FLEXIBLE,SMT	SACE0035601			
5	ENBY00	CONNECTOR,BOARD TO BOARD	ENBY0031001	60 PIN,0.4 mm,ETC , ,H=1.0, Male		
5	SPCY00	PCB,FLEXIBLE	SPCY0061401	POLYI ,0.3 mm,DOUBLE ,		
4	SAEY00	PCB ASSY,KEYPAD	SAEY0046601			17
5	SAEB00	PCB ASSY,KEYPAD,INSERT	SAEB0013001			
6	SBCL00	BATTERY,CELL,LITHIUM	SBCL0001302	2 V,1 mAh,COIN ,W3000 Back Up Battery		
5	SAEE00	PCB ASSY,KEYPAD,SMT	SAEE0014301			
6	SAEC00	PCB ASSY,KEYPAD,SMT BOTTOM	SAEC0012801			
7	BAT801	CONN,JACK/PLUG,EARPHONE	ENJE0003001	2 ,2 PIN,W3000 Back Up Battery Holder		
7	C701	CAP,CERAMIC,CHIP	ECCH0000120	39 pF,50V ,J ,NP0,TC ,1005 ,R/TP		
7	C702	CAP,CERAMIC,CHIP	ECCH0004904	1 uF,6.3V ,K ,X5R ,TC ,1005 ,R/TP		
7	C703	CAP,CERAMIC,CHIP	ECCH0000120	39 pF,50V ,J ,NP0,TC ,1005 ,R/TP		
7	C704	CAP,CERAMIC,CHIP	ECCH0004904	1 uF,6.3V ,K ,X5R ,TC ,1005 ,R/TP		
7	C705	CAP,CERAMIC,CHIP	ECCH0000120	39 pF,50V ,J ,NP0,TC ,1005 ,R/TP		
7	C706	CAP,CERAMIC,CHIP	ECCH0004904	1 uF,6.3V ,K ,X5R ,TC ,1005 ,R/TP		
7	C707	CAP,CERAMIC,CHIP	ECCH0005801	2.2 uF,6.3V ,K ,X5R ,TC ,1608 ,R/TP		
7	C708	CAP,CERAMIC,CHIP	ECCH0007701	1 uF,10V ,K ,X5R ,TC ,1608 ,R/TP		
7	C709	CAP,CERAMIC,CHIP	ECCH0000155	10 nF,16V ,K ,X7R,HD,1005,R/TP		
7	C710	CAP,CERAMIC,CHIP	ECCH0000155	10 nF,16V ,K ,X7R,HD,1005,R/TP		
7	C711	CAP,CERAMIC,CHIP	ECCH0000182	0.1 uF,10V ,K ,X5R ,HD ,1005 ,R/TP		
7	C712	CAP,CERAMIC,CHIP	ECCH0004904	1 uF,6.3V ,K ,X5R ,TC ,1005 ,R/TP		
7	C713	CAP,TANTAL,CHIP	ECTH0002201	10 uF,6.3V ,M ,STD ,1608 ,R/TP		
7	C714	CAP,CERAMIC,CHIP	ECCH0000120	39 pF,50V ,J ,NP0,TC ,1005 ,R/TP		
7	C715	CAP,CERAMIC,CHIP	ECCH0000186	33 pF,50V ,J ,NP0 ,TC ,1005 ,R/TP		
7	C716	CAP,CERAMIC,CHIP	ECCH0000120	39 pF,50V ,J ,NP0,TC ,1005 ,R/TP		

12. EXPLODED VIEW & REPLACEMENT PART LIST

Level	Location No.	Description	Part Number	Specification	Color	Remark
7	C717	CAP,CERAMIC,CHIP	ECCH0000120	39 pF,50V,J,NP0,TC,1005,R/TP		
7	C718	CAP,CERAMIC,CHIP	ECCH0000120	39 pF,50V,J,NP0,TC,1005,R/TP		
7	C719	CAP,CERAMIC,CHIP	ECCH0000155	10 nF,16V,K,X7R,HD,1005,R/TP		
7	C720	CAP,CERAMIC,CHIP	ECCH0000182	0.1 uF,10V ,K ,X5R ,HD ,1005 ,R/TP		
7	C721	CAP,CERAMIC,CHIP	ECCH0000182	0.1 uF,10V ,K ,X5R ,HD ,1005 ,R/TP		
7	C722	CAP,CERAMIC,CHIP	ECCH0000182	0.1 uF,10V ,K ,X5R ,HD ,1005 ,R/TP		
7	C723	CAP,CERAMIC,CHIP	ECCH0000182	0.1 uF,10V ,K ,X5R ,HD ,1005 ,R/TP		
7	C724	CAP,CERAMIC,CHIP	ECCH0000182	0.1 uF,10V ,K ,X5R ,HD ,1005 ,R/TP		
7	C725	CAP,CERAMIC,CHIP	ECCH0000182	0.1 uF,10V ,K ,X5R ,HD ,1005 ,R/TP		
7	C726	CAP,CERAMIC,CHIP	ECCH0004904	1 uF,6.3V ,K ,X5R ,TC ,1005 ,R/TP		
7	C727	CAP,CERAMIC,CHIP	ECCH0000120	39 pF,50V,J,NP0,TC,1005,R/TP		
7	C728	CAP,CERAMIC,CHIP	ECCH0004904	1 uF,6.3V ,K ,X5R ,TC ,1005 ,R/TP		
7	C729	CAP,CERAMIC,CHIP	ECCH0000120	39 pF,50V,J,NP0,TC,1005,R/TP		
7	C730	CAP,CERAMIC,CHIP	ECCH0004904	1 uF,6.3V ,K ,X5R ,TC ,1005 ,R/TP		
7	C739	CAP,CERAMIC,CHIP	ECCH0004904	1 uF,6.3V ,K ,X5R ,TC ,1005 ,R/TP		
7	C740	CAP,CERAMIC,CHIP	ECCH0007701	1 uF,10V ,K ,X5R ,TC ,1608 ,R/TP		
7	C741	CAP,CERAMIC,CHIP	ECCH0005801	2.2 uF,6.3V ,K ,X5R ,TC ,1608 ,R/TP		
7	C742	CAP,CERAMIC,CHIP	ECCH0004904	1 uF,6.3V ,K ,X5R ,TC ,1005 ,R/TP		
7	C743	CAP,CERAMIC,CHIP	ECCH0006201	4.7 uF,6.3V ,K ,X5R ,TC ,1608 ,R/TP		
7	C744	CAP,CERAMIC,CHIP	ECCH0004904	1 uF,6.3V ,K ,X5R ,TC ,1005 ,R/TP		
7	C745	CAP,CERAMIC,CHIP	ECCH0000155	10 nF,16V,K,X7R,HD,1005,R/TP		
7	C801	CAP,CERAMIC,CHIP	ECCH0000117	27 pF,50V,J,NP0,TC,1005,R/TP		
7	C805	CAP,CERAMIC,CHIP	ECCH0004904	1 uF,6.3V ,K ,X5R ,TC ,1005 ,R/TP		
7	C806	CAP,CERAMIC,CHIP	ECCH0000155	10 nF,16V,K,X7R,HD,1005,R/TP		
7	C807	CAP,CERAMIC,CHIP	ECCH0004904	1 uF,6.3V ,K ,X5R ,TC ,1005 ,R/TP		
7	C808	CAP,CERAMIC,CHIP	ECCH0004904	1 uF,6.3V ,K ,X5R ,TC ,1005 ,R/TP		
7	C809	CAP,CERAMIC,CHIP	ECCH0004904	1 uF,6.3V ,K ,X5R ,TC ,1005 ,R/TP		
7	C810	CAP,CERAMIC,CHIP	ECCH0004904	1 uF,6.3V ,K ,X5R ,TC ,1005 ,R/TP		
7	C811	CAP,CERAMIC,CHIP	ECCH0004904	1 uF,6.3V ,K ,X5R ,TC ,1005 ,R/TP		
7	C812	CAP,CERAMIC,CHIP	ECCH0000120	39 pF,50V,J,NP0,TC,1005,R/TP		
7	C813	CAP,CERAMIC,CHIP	ECCH0000120	39 pF,50V,J,NP0,TC,1005,R/TP		
7	C814	CAP,TANTAL,CHIP,MAKER	ECTZ0005201	10 uF,6.3V ,M ,L_ESR ,1608 ,R/TP		

12. EXPLODED VIEW & REPLACEMENT PART LIST

Level	Location No.	Description	Part Number	Specification	Color	Remark
7	C816	CAP,CERAMIC,CHIP	ECCH0004904	1 uF,6.3V ,K ,X5R ,TC ,1005 ,R/TP		
7	C817	CAP,CERAMIC,CHIP	ECCH0004904	1 uF,6.3V ,K ,X5R ,TC ,1005 ,R/TP		
7	C818	CAP,CERAMIC,CHIP	ECCH0004904	1 uF,6.3V ,K ,X5R ,TC ,1005 ,R/TP		
7	C819	CAP,CERAMIC,CHIP	ECCH0000117	27 pF,50V ,J ,NP0,TC,1005,R/TP		
7	C820	CAP,CERAMIC,CHIP	ECCH0000117	27 pF,50V ,J ,NP0,TC,1005,R/TP		
7	C821	CAP,CERAMIC,CHIP	ECCH0000117	27 pF,50V ,J ,NP0,TC,1005,R/TP		
7	C822	CAP,CERAMIC,CHIP	ECCH0000120	39 pF,50V ,J ,NP0,TC,1005,R/TP		
7	C823	CAP,CERAMIC,CHIP	ECCH0000120	39 pF,50V ,J ,NP0,TC,1005,R/TP		
7	C824	CAP,CERAMIC,CHIP	ECCH0000120	39 pF,50V ,J ,NP0,TC,1005,R/TP		
7	CN801	CONNECTOR,FFC/FPC	ENQY0010102	61 PIN,0.3 mm,ETC ,AU ,H::1.0MM		
7	CN803	CONNECTOR,FFC/FPC	ENQY0010901	35 PIN,0.3 mm,ETC , ,H=1.2		
7	FB701	FILTER,BEAD,CHIP	SFBH0008101	600 ohm,1005 ,		
7	FB801	FILTER,BEAD,CHIP	SFBH0007101	120 ohm,1005 ,Ferrite Bead		
7	FB802	FILTER,BEAD,CHIP	SFBH0007101	120 ohm,1005 ,Ferrite Bead		
7	FL801	FILTER,EMI/POWER	SFEY0007103	SMD ,18 V , ,SMD ,4ch. R-Varistor Array(50Ohm,15pF), Pb-free		
7	FL802	VARISTOR	SEVY0005502	18 V , ,SMD ,10 Ohm , 7.5pF , 4ch Array		
7	FL803	VARISTOR	SEVY0005502	18 V , ,SMD ,10 Ohm , 7.5pF , 4ch Array		
7	FL804	FILTER,EMI/POWER	SFEY0007103	SMD ,18 V , ,SMD ,4ch. R-Varistor Array(50Ohm,15pF), Pb-free		
7	FL805	VARISTOR	SEVY0005502	18 V , ,SMD ,10 Ohm , 7.5pF , 4ch Array		
7	FL806	FILTER,EMI/POWER	SFEY0007103	SMD ,18 V , ,SMD ,4ch. R-Varistor Array(50Ohm,15pF), Pb-free		
7	FL807	VARISTOR	SEVY0005502	18 V , ,SMD ,10 Ohm , 7.5pF , 4ch Array		
7	FL808	FILTER,EMI/POWER	SFEY0007103	SMD ,18 V , ,SMD ,4ch. R-Varistor Array(50Ohm,15pF), Pb-free		
7	FL809	FILTER,EMI/POWER	SFEY0007103	SMD ,18 V , ,SMD ,4ch. R-Varistor Array(50Ohm,15pF), Pb-free		
7	FL810	FILTER,EMI/POWER	SFEY0011001	SMD ,SMD ,2012,9 V , ,4ch.0 Ohm,30pF, Pb-free		
7	FL811	FILTER,EMI/POWER	SFEY0011001	SMD ,SMD ,2012,9 V , ,4ch.0 Ohm,30pF, Pb-free		
7	FL812	FILTER,EMI/POWER	SFEY0011001	SMD ,SMD ,2012,9 V , ,4ch.0 Ohm,30pF, Pb-free		
7	FL813	FILTER,EMI/POWER	SFEY0011001	SMD ,SMD ,2012,9 V , ,4ch.0 Ohm,30pF, Pb-free		
7	FL814	FILTER,EMI/POWER	SFEY0011001	SMD ,SMD ,2012,9 V , ,4ch.0 Ohm,30pF, Pb-free		
7	L801	INDUCTOR,CHIP	ELCH0004715	27 nH,J ,1005 ,R/TP ,		
7	L802	INDUCTOR,CHIP	ELCH0004715	27 nH,J ,1005 ,R/TP ,		

12. EXPLODED VIEW & REPLACEMENT PART LIST

Level	Location No.	Description	Part Number	Specification	Color	Remark
7	LD801	DIODE,LED,MODULE	EDLM0008601	WHITE ,1 LED,2.0*1.5*0.45 ,R/TP ,PB-FREE		
7	MIC701	MICROPHONE	SUMY0010502	UNIT ,42 dB,4*1.35 ,SMD 4*4		
7	Q701	TR,BJT,NPN	EQBN0007101	EMT3 ,0.15 W,R/TP ,LOW FREQUENCY		
7	R704	RES,CHIP	ERHY0000261	10K ohm,1/16W,J,1005,R/TP		
7	R708	RES,CHIP	ERHY0000201	0 ohm,1/16W,J,1005,R/TP		
7	R710	RES,CHIP	ERHY0000241	1K ohm,1/16W,J,1005,R/TP		
7	R711	RES,CHIP	ERHY0000261	10K ohm,1/16W,J,1005,R/TP		
7	R712	RES,CHIP	ERHY0000261	10K ohm,1/16W,J,1005,R/TP		
7	R713	RES,CHIP	ERHY0000247	2.2K ohm,1/16W,J,1005,R/TP		
7	R716	RES,CHIP	ERHY0000201	0 ohm,1/16W,J,1005,R/TP		
7	R717	RES,CHIP	ERHY0000201	0 ohm,1/16W,J,1005,R/TP		
7	R718	RES,CHIP	ERHY0000247	2.2K ohm,1/16W,J,1005,R/TP		
7	R723	RES,CHIP	ERHY0000201	0 ohm,1/16W,J,1005,R/TP		
7	R724	RES,CHIP	ERHY0000273	47K ohm,1/16W,J,1005,R/TP		
7	R729	RES,CHIP	ERHY0000201	0 ohm,1/16W,J,1005,R/TP		
7	R739	RES,CHIP	ERHY0000262	12K ohm,1/16W,J,1005,R/TP		
7	R740	RES,CHIP	ERHY0000262	12K ohm,1/16W,J,1005,R/TP		
7	R741	RES,CHIP	ERHY0000203	10 ohm,1/16W,J,1005,R/TP		
7	R742	RES,CHIP	ERHY0000203	10 ohm,1/16W,J,1005,R/TP		
7	R745	RES,CHIP	ERHY0000280	100K ohm,1/16W,J,1005,R/TP		
7	R747	RES,CHIP	ERHY0000201	0 ohm,1/16W,J,1005,R/TP		
7	R751	RES,CHIP	ERHY0000280	100K ohm,1/16W,J,1005,R/TP		
7	R804	RES,CHIP	ERHY0000212	39 ohm,1/16W,J,1005,R/TP		
7	R805	RES,CHIP	ERHY0000212	39 ohm,1/16W,J,1005,R/TP		
7	R806	RES,CHIP	ERHY0000212	39 ohm,1/16W,J,1005,R/TP		
7	R807	RES,CHIP	ERHY0000212	39 ohm,1/16W,J,1005,R/TP		
7	R808	RES,CHIP	ERHY0000201	0 ohm,1/16W,J,1005,R/TP		
7	R809	RES,CHIP	ERHY0000201	0 ohm,1/16W,J,1005,R/TP		
7	R810	RES,CHIP	ERHY0000280	100K ohm,1/16W,J,1005,R/TP		
7	R811	RES,CHIP	ERHY0000280	100K ohm,1/16W,J,1005,R/TP		
7	R814	RES,CHIP	ERHY0000280	100K ohm,1/16W,J,1005,R/TP		

12. EXPLODED VIEW & REPLACEMENT PART LIST

Level	Location No.	Description	Part Number	Specification	Color	Remark
7	U701	IC	EUSY0265201	BGA(8*8) ,140 PIN,R/TP ,1.3M Camera, ISP+, NAND I/F, M/M Chip, Pb-free		
7	U702	IC	EUSY0273701	BGA ,63 PIN,R/TP ,512Mbit NAND Flash Memory		
7	U703	IC	EUSY0223007	HVSOF5 ,5 PIN,R/TP ,2.5V, 150mA,LDO		
7	U704	IC	EUSY0154410	MLF ,10 PIN,R/TP ,Dual(1.8V/150mA,2.8V/300mA) LDO Regulator		
7	U705	IC	EUSY0223003	HVSOF5 ,5 PIN,R/TP ,150mA CMOS LDO WITH OUTPUT CONTROL / 3.3V		
7	U801	IC	EUSY0154412	MLF ,10 PIN,R/TP ,Dual(1.8V/150mA, 2.6V/300mA) LDO Regulator		
7	U802	IC	EUSY0245401	DFN ,16 PIN,R/TP ,Main 3 LEDs(60mA) + Flash (300mA) Charge pump		
7	VA705	VARISTOR	SEVY0003901	5.5 V , ,SMD ,480pF, 1005		
7	VA706	VARISTOR	SEVY0003901	5.5 V , ,SMD ,480pF, 1005		
7	VA801	VARISTOR	SEVY0003901	5.5 V , ,SMD ,480pF, 1005		
7	VA802	VARISTOR	SEVY0003901	5.5 V , ,SMD ,480pF, 1005		
6	SAED00	PCB ASSY,KEYPAD,SMT TOP	SAED0013001			
7	C731	CAP,CERAMIC,CHIP	ECCH0004904	1 uF,6.3V ,K ,X5R ,TC ,1005 ,R/TP		
7	C732	CAP,CERAMIC,CHIP	ECCH0004904	1 uF,6.3V ,K ,X5R ,TC ,1005 ,R/TP		
7	C733	CAP,CERAMIC,CHIP	ECCH0004904	1 uF,6.3V ,K ,X5R ,TC ,1005 ,R/TP		
7	C734	CAP,CERAMIC,CHIP	ECCH0004904	1 uF,6.3V ,K ,X5R ,TC ,1005 ,R/TP		
7	C735	CAP,CERAMIC,CHIP	ECCH0004904	1 uF,6.3V ,K ,X5R ,TC ,1005 ,R/TP		
7	C736	CAP,CERAMIC,CHIP	ECCH0004904	1 uF,6.3V ,K ,X5R ,TC ,1005 ,R/TP		
7	C737	CAP,CERAMIC,CHIP	ECCH0004904	1 uF,6.3V ,K ,X5R ,TC ,1005 ,R/TP		
7	C738	CAP,CERAMIC,CHIP	ECCH0004904	1 uF,6.3V ,K ,X5R ,TC ,1005 ,R/TP		
7	C802	CAP,CERAMIC,CHIP	ECCH0004904	1 uF,6.3V ,K ,X5R ,TC ,1005 ,R/TP		
7	C803	CAP,CERAMIC,CHIP	ECCH0004904	1 uF,6.3V ,K ,X5R ,TC ,1005 ,R/TP		
7	C804	CAP,CERAMIC,CHIP	ECCH0004904	1 uF,6.3V ,K ,X5R ,TC ,1005 ,R/TP		
7	CN802	CONNECTOR,BOARD TO BOARD	ENBY0019101	24 PIN,0.4 mm,STRAIGHT , ,H1.5, MALE		
7	LD701	DIODE,LED,CHIP	EDLH0006001	Blue ,1608 ,R/TP ,Blue SMD LED		
7	LD702	DIODE,LED,CHIP	EDLH0006001	Blue ,1608 ,R/TP ,Blue SMD LED		
7	LD703	DIODE,LED,CHIP	EDLH0006001	Blue ,1608 ,R/TP ,Blue SMD LED		
7	LD704	DIODE,LED,CHIP	EDLH0006001	Blue ,1608 ,R/TP ,Blue SMD LED		
7	LD705	DIODE,LED,CHIP	EDLH0006001	Blue ,1608 ,R/TP ,Blue SMD LED		

12. EXPLODED VIEW & REPLACEMENT PART LIST

Level	Location No.	Description	Part Number	Specification	Color	Remark
7	LD706	DIODE,LED,CHIP	EDLH0006001	Blue ,1608 ,R/TP ,Blue SMD LED		
7	LD707	DIODE,LED,CHIP	EDLH0006001	Blue ,1608 ,R/TP ,Blue SMD LED		
7	LD708	DIODE,LED,CHIP	EDLH0006001	Blue ,1608 ,R/TP ,Blue SMD LED		
7	R727	RES,CHIP	ERHY0000261	10K ohm,1/16W,J,1005,R/TP		
7	R728	RES,CHIP	ERHY0000237	680 ohm,1/16W,J,1005,R/TP		
7	R731	RES,CHIP	ERHY0000213	47 ohm,1/16W,J,1005,R/TP		
7	R732	RES,CHIP	ERHY0000213	47 ohm,1/16W,J,1005,R/TP		
7	R733	RES,CHIP	ERHY0000213	47 ohm,1/16W,J,1005,R/TP		
7	R734	RES,CHIP	ERHY0000213	47 ohm,1/16W,J,1005,R/TP		
7	R735	RES,CHIP	ERHY0000213	47 ohm,1/16W,J,1005,R/TP		
7	R736	RES,CHIP	ERHY0000213	47 ohm,1/16W,J,1005,R/TP		
7	R743	RES,CHIP	ERHY0000220	100 ohm,1/16W,J,1005,R/TP		
7	R744	RES,CHIP	ERHY0000220	100 ohm,1/16W,J,1005,R/TP		
7	R749	RES,CHIP	ERHY0000213	47 ohm,1/16W,J,1005,R/TP		
7	R750	RES,CHIP	ERHY0000213	47 ohm,1/16W,J,1005,R/TP		
7	R803	RES,CHIP	ERHY0000201	0 ohm,1/16W,J,1005,R/TP		
7	VA703	VARISTOR	SEVY0000702	14 V,10% ,SMD ,		
7	VA704	VARISTOR	SEVY0000702	14 V,10% ,SMD ,		
6	SPEY00	PCB,KEYPAD	SPEY0037201	FR-4 ,0.5 mm,BUILD-UP 6 ,		
4	SUSY00	SPEAKER	SUSY0017901	ASSY ,8 ohm,87 dB,17 mm,,10mm(Oblong Type)		23
4	SVCY00	CAMERA	SVCY0007301	CMOS ,MEGA ,1.3M Magnachip Sensor		19
4	SVLM00	LCD MODULE	SVLM0013701	MAIN ,1.77" _128*160 ,33.8*46.24*2.5 ,262k ,TFT ,TM ,LGDP4212 ,Single		12
3	GMZZ00	SCREW MACHINE	GMZZ0017701	1.4 mm,3.0 mm,MSWR3 ,N ,+ , - ,	Silver	
3	SAFY00	PCB ASSY,MAIN	SAFY0148006			52
4	SAFB00	PCB ASSY,MAIN,INSERT	SAFB0051201			
5	SJMY00	VIBRATOR,MOTOR	SJMY0008003	3 V,80 mA,9*3.4 ,17mm		
5	SPKY00	PCB,SIDEKEY	SPKY0021301	POLYI ,0.2 mm,DOUBLE ,VOLUME		
5	SPKY01	PCB,SIDEKEY	SPKY0021401	POLYI ,0.2 mm,DOUBLE ,camera		
5	SUMY00	MICROPHONE	SUMY0003802	FPCB , -42 dB,4*1.5 ,		
4	SAFF00	PCB ASSY,MAIN,SMT	SAFF0071005			
5	SAFC00	PCB ASSY,MAIN,SMT BOTTOM	SAFC0063401			

12. EXPLODED VIEW & REPLACEMENT PART LIST

Level	Location No.	Description	Part Number	Specification	Color	Remark
6	ANT401	ANTENNA,GSM,FIXED	SNGF0010801	2.5:1 200Mhz ,0 dBd ,2.5:1,0 dBd ,B/T Chip, Pb Free, SMD 9.0x3.0x1.2		
6	C101	CAP,CERAMIC,CHIP	ECCH0000163	47 nF,10V,K,X5R,HD,1005,R/TP		
6	C102	CAP,CERAMIC,CHIP	ECCH0000167	0.1 uF,6.3V,K,X5R,HD,1005,R/TP		
6	C103	CAP,CERAMIC,CHIP	ECCH0000167	0.1 uF,6.3V,K,X5R,HD,1005,R/TP		
6	C104	CAP,CERAMIC,CHIP	ECCH0000167	0.1 uF,6.3V,K,X5R,HD,1005,R/TP		
6	C107	CAP,CERAMIC,CHIP	ECCH0000163	47 nF,10V,K,X5R,HD,1005,R/TP		
6	C110	CAP,CERAMIC,CHIP	ECCH0000167	0.1 uF,6.3V,K,X5R,HD,1005,R/TP		
6	C111	CAP,CERAMIC,CHIP	ECCH0000393	22 uF,6.3V ,M ,X5R ,HD ,2012 ,R/TP		
6	C112	CAP,CERAMIC,CHIP	ECCH0000115	22 pF,50V,J,NP0,TC,1005,R/TP		
6	C113	CAP,CERAMIC,CHIP	ECCH0000163	47 nF,10V,K,X5R,HD,1005,R/TP		
6	C114	CAP,CERAMIC,CHIP	ECCH0004903	1 uF,6.3V ,Z ,Y5V ,TC ,1005 ,R/TP		
6	C115	CAP,CERAMIC,CHIP	ECCH0004904	1 uF,6.3V ,K ,X5R ,TC ,1005 ,R/TP		
6	C116	CAP,CERAMIC,CHIP	ECCH0004904	1 uF,6.3V ,K ,X5R ,TC ,1005 ,R/TP		
6	C117	CAP,CERAMIC,CHIP	ECCH0000167	0.1 uF,6.3V,K,X5R,HD,1005,R/TP		
6	C118	CAP,CERAMIC,CHIP	ECCH0004904	1 uF,6.3V ,K ,X5R ,TC ,1005 ,R/TP		
6	C119	CAP,CERAMIC,CHIP	ECCH0005801	2.2 uF,6.3V ,K ,X5R ,TC ,1608 ,R/TP		
6	C120	CAP,CERAMIC,CHIP	ECCH0004904	1 uF,6.3V ,K ,X5R ,TC ,1005 ,R/TP		
6	C121	CAP,CERAMIC,CHIP	ECCH0004904	1 uF,6.3V ,K ,X5R ,TC ,1005 ,R/TP		
6	C122	CAP,CERAMIC,CHIP	ECCH0000122	47 pF,50V,J,NP0,TC,1005,R/TP		
6	C123	CAP,CERAMIC,CHIP	ECCH0000165	68 nF,6.3V,K,X5R,HD,1005,R/TP		
6	C124	CAP,CERAMIC,CHIP	ECCH0004904	1 uF,6.3V ,K ,X5R ,TC ,1005 ,R/TP		
6	C125	CAP,CERAMIC,CHIP	ECCH0004904	1 uF,6.3V ,K ,X5R ,TC ,1005 ,R/TP		
6	C126	CAP,CERAMIC,CHIP	ECCH0000163	47 nF,10V,K,X5R,HD,1005,R/TP		
6	C127	CAP,CERAMIC,CHIP	ECCH0000163	47 nF,10V,K,X5R,HD,1005,R/TP		
6	C128	CAP,CERAMIC,CHIP	ECCH0004904	1 uF,6.3V ,K ,X5R ,TC ,1005 ,R/TP		
6	C129	CAP,CERAMIC,CHIP	ECCH0000155	10 nF,16V,K,X7R,HD,1005,R/TP		
6	C133	CAP,CERAMIC,CHIP	ECCH0004904	1 uF,6.3V ,K ,X5R ,TC ,1005 ,R/TP		
6	C134	CAP,CERAMIC,CHIP	ECCH0004904	1 uF,6.3V ,K ,X5R ,TC ,1005 ,R/TP		
6	C135	CAP,CERAMIC,CHIP	ECCH0000120	39 pF,50V,J,NP0,TC,1005,R/TP		
6	C137	CAP,CERAMIC,CHIP	ECCH0000120	39 pF,50V,J,NP0,TC,1005,R/TP		
6	C138	CAP,CERAMIC,CHIP	ECCH0000120	39 pF,50V,J,NP0,TC,1005,R/TP		

12. EXPLODED VIEW & REPLACEMENT PART LIST

Level	Location No.	Description	Part Number	Specification	Color	Remark
6	C139	CAP,CERAMIC,CHIP	ECCH0004904	1 uF,6.3V ,K ,X5R ,TC ,1005 ,R/TP		
6	C140	CAP,CERAMIC,CHIP	ECCH0000120	39 pF,50V,J,NP0,TC,1005,R/TP		
6	C141	CAP,CERAMIC,CHIP	ECCH0000120	39 pF,50V,J,NP0,TC,1005,R/TP		
6	C142	CAP,CERAMIC,CHIP	ECCH0000120	39 pF,50V,J,NP0,TC,1005,R/TP		
6	C143	CAP,CERAMIC,CHIP	ECCH0000167	0.1 uF,6.3V,K,X5R,HD,1005,R/TP		
6	C144	CAP,CERAMIC,CHIP	ECCH0000120	39 pF,50V,J,NP0,TC,1005,R/TP		
6	C145	CAP,CERAMIC,CHIP	ECCH0000120	39 pF,50V,J,NP0,TC,1005,R/TP		
6	C146	CAP,CERAMIC,CHIP	ECCH0000120	39 pF,50V,J,NP0,TC,1005,R/TP		
6	C147	CAP,CERAMIC,CHIP	ECCH0004903	1 uF,6.3V ,Z ,Y5V ,TC ,1005 ,R/TP		
6	C148	CAP,CERAMIC,CHIP	ECCH0000155	10 nF,16V,K,X7R,HD,1005,R/TP		
6	C149	CAP,CERAMIC,CHIP	ECCH0007901	10 uF,4V ,M ,X5R ,TC ,1608 ,R/TP		
6	C152	CAP,CERAMIC,CHIP	ECCH0000140	560 pF,50V,K,X7R,HD,1005,R/TP		
6	C153	CAP,CERAMIC,CHIP	ECCH0000143	1 nF,50V,K,X7R,HD,1005,R/TP		
6	C201	CAP,CERAMIC,CHIP	ECCH0000129	120 pF,50V,J,NP0,TC,1005,R/TP		
6	C202	CAP,CERAMIC,CHIP	ECCH0000182	0.1 uF,10V ,K ,X5R ,HD ,1005 ,R/TP		
6	C203	CAP,CERAMIC,CHIP	ECCH0000143	1 nF,50V,K,X7R,HD,1005,R/TP		
6	C204	CAP,CERAMIC,CHIP	ECCH0000159	22 nF,16V,K,X7R,HD,1005,R/TP		
6	C205	CAP,CERAMIC,CHIP	ECCH0000167	0.1 uF,6.3V,K,X5R,HD,1005,R/TP		
6	C207	CAP,CERAMIC,CHIP	ECCH0000122	47 pF,50V,J,NP0,TC,1005,R/TP		
6	C208	CAP,CERAMIC,CHIP	ECCH0000122	47 pF,50V,J,NP0,TC,1005,R/TP		
6	C211	CAP,CERAMIC,CHIP	ECCH0000167	0.1 uF,6.3V,K,X5R,HD,1005,R/TP		
6	C212	CAP,CERAMIC,CHIP	ECCH0000167	0.1 uF,6.3V,K,X5R,HD,1005,R/TP		
6	C213	CAP,CERAMIC,CHIP	ECCH0000167	0.1 uF,6.3V,K,X5R,HD,1005,R/TP		
6	C214	CAP,CERAMIC,CHIP	ECCH0000167	0.1 uF,6.3V,K,X5R,HD,1005,R/TP		
6	C215	CAP,CERAMIC,CHIP	ECCH0000167	0.1 uF,6.3V,K,X5R,HD,1005,R/TP		
6	C216	CAP,CERAMIC,CHIP	ECCH0000167	0.1 uF,6.3V,K,X5R,HD,1005,R/TP		
6	C217	CAP,CERAMIC,CHIP	ECCH0004904	1 uF,6.3V ,K ,X5R ,TC ,1005 ,R/TP		
6	C218	CAP,CERAMIC,CHIP	ECCH0000133	220 pF,50V ,K ,X7R ,HD ,1005 ,R/TP		
6	C219	CAP,CERAMIC,CHIP	ECCH0000167	0.1 uF,6.3V,K,X5R,HD,1005,R/TP		
6	C220	CAP,CERAMIC,CHIP	ECCH0000167	0.1 uF,6.3V,K,X5R,HD,1005,R/TP		
6	C221	CAP,TANTAL,CHIP	ECTH0001702	4.7 uF,10V ,M ,STD ,2012 ,R/TP		
6	C222	CAP,CERAMIC,CHIP	ECCH0004904	1 uF,6.3V ,K ,X5R ,TC ,1005 ,R/TP		

12. EXPLODED VIEW & REPLACEMENT PART LIST

Level	Location No.	Description	Part Number	Specification	Color	Remark
6	C223	CAP,CERAMIC,CHIP	ECCH0004904	1 uF,6.3V ,K ,X5R ,TC ,1005 ,R/TP		
6	C224	CAP,CERAMIC,CHIP	ECCH0004904	1 uF,6.3V ,K ,X5R ,TC ,1005 ,R/TP		
6	C225	CAP,CERAMIC,CHIP	ECCH0000182	0.1 uF,10V ,K ,X5R ,HD ,1005 ,R/TP		
6	C226	CAP,CERAMIC,CHIP	ECCH0000167	0.1 uF,6.3V,K,X5R,HD,1005,R/TP		
6	C227	CAP,CERAMIC,CHIP	ECCH0004904	1 uF,6.3V ,K ,X5R ,TC ,1005 ,R/TP		
6	C228	CAP,TANTAL,CHIP,MAKER	ECTZ0004202	10 uF,10V ,M ,STD ,2012 ,R/TP		
6	C229	CAP,CERAMIC,CHIP	ECCH0000182	0.1 uF,10V ,K ,X5R ,HD ,1005 ,R/TP		
6	C231	CAP,TANTAL,CHIP,MAKER	ECTZ0003602	22 uF,6.3V ,M ,STD ,2012 ,R/TP		
6	C232	CAP,CERAMIC,CHIP	ECCH0000120	39 pF,50V,J,NP0,TC,1005,R/TP		
6	C234	CAP,CERAMIC,CHIP	ECCH0000182	0.1 uF,10V ,K ,X5R ,HD ,1005 ,R/TP		
6	C235	CAP,CERAMIC,CHIP	ECCH0000120	39 pF,50V,J,NP0,TC,1005,R/TP		
6	C236	CAP,CERAMIC,CHIP	ECCH0000120	39 pF,50V,J,NP0,TC,1005,R/TP		
6	C237	CAP,TANTAL,CHIP	ECTH0004402	33 uF,6.3V ,M ,L_ESR ,2012 ,R/TP		
6	C238	CAP,CERAMIC,CHIP	ECCH0000167	0.1 uF,6.3V,K,X5R,HD,1005,R/TP		
6	C239	CAP,CERAMIC,CHIP	ECCH0000120	39 pF,50V,J,NP0,TC,1005,R/TP		
6	C240	CAP,TANTAL,CHIP	ECTH0004402	33 uF,6.3V ,M ,L_ESR ,2012 ,R/TP		
6	C241	CAP,CERAMIC,CHIP	ECCH0000120	39 pF,50V,J,NP0,TC,1005,R/TP		
6	C242	CAP,CERAMIC,CHIP	ECCH0000120	39 pF,50V,J,NP0,TC,1005,R/TP		
6	C243	CAP,CERAMIC,CHIP	ECCH0000120	39 pF,50V,J,NP0,TC,1005,R/TP		
6	C246	CAP,CERAMIC,CHIP	ECCH0000120	39 pF,50V,J,NP0,TC,1005,R/TP		
6	C247	CAP,CERAMIC,CHIP	ECCH0004904	1 uF,6.3V ,K ,X5R ,TC ,1005 ,R/TP		
6	C248	CAP,CERAMIC,CHIP	ECCH0000167	0.1 uF,6.3V,K,X5R,HD,1005,R/TP		
6	C249	CAP,CERAMIC,CHIP	ECCH0000167	0.1 uF,6.3V,K,X5R,HD,1005,R/TP		
6	C301	CAP,CERAMIC,CHIP	ECCH0004904	1 uF,6.3V ,K ,X5R ,TC ,1005 ,R/TP		
6	C302	CAP,TANTAL,CHIP,MAKER	ECTZ0004201	22 uF,6.3V ,M ,STD ,2012 ,R/TP		
6	C303	CAP,TANTAL,CHIP,MAKER	ECTZ0004201	22 uF,6.3V ,M ,STD ,2012 ,R/TP		
6	C304	CAP,CERAMIC,CHIP	ECCH0004904	1 uF,6.3V ,K ,X5R ,TC ,1005 ,R/TP		
6	C305	CAP,CERAMIC,CHIP	ECCH0004904	1 uF,6.3V ,K ,X5R ,TC ,1005 ,R/TP		
6	C306	CAP,CERAMIC,CHIP	ECCH0000120	39 pF,50V,J,NP0,TC,1005,R/TP		
6	C307	CAP,CERAMIC,CHIP	ECCH0000110	10 pF,50V,D,NP0,TC,1005,R/TP		
6	C308	CAP,CERAMIC,CHIP	ECCH0000104	3 pF,50V,C,NP0,TC,1005,R/TP		
6	C316	CAP,CERAMIC,CHIP	ECCH0004902	220 nF,10V ,Z ,Y5V ,TC ,1005 ,R/TP		

12. EXPLODED VIEW & REPLACEMENT PART LIST

Level	Location No.	Description	Part Number	Specification	Color	Remark
6	C319	CAP,CERAMIC,CHIP	ECCH0000117	27 pF,50V,J,NP0,TC,1005,R/TP		
6	C320	CAP,CERAMIC,CHIP	ECCH0000143	1 nF,50V,K,X7R,HD,1005,R/TP		
6	C321	CAP,CERAMIC,CHIP	ECCH0000117	27 pF,50V,J,NP0,TC,1005,R/TP		
6	C322	CAP,CERAMIC,CHIP	ECCH0004904	1 uF,6.3V ,K ,X5R , TC , 1005 ,R/TP		
6	C402	CAP,CERAMIC,CHIP	ECCH0004904	1 uF,6.3V ,K ,X5R , TC , 1005 ,R/TP		
6	C403	CAP,CERAMIC,CHIP	ECCH0004904	1 uF,6.3V ,K ,X5R , TC , 1005 ,R/TP		
6	C404	CAP,CERAMIC,CHIP	ECCH0004904	1 uF,6.3V ,K ,X5R , TC , 1005 ,R/TP		
6	C405	CAP,CERAMIC,CHIP	ECCH0000112	15 pF,50V,J,NP0,TC,1005,R/TP		
6	C406	CAP,CERAMIC,CHIP	ECCH0005801	2.2 uF,6.3V ,K ,X5R , TC , 1608 ,R/TP		
6	C407	CAP,CERAMIC,CHIP	ECCH0000182	0.1 uF,10V ,K ,X5R ,HD , 1005 ,R/TP		
6	C408	CAP,CERAMIC,CHIP	ECCH0005801	2.2 uF,6.3V ,K ,X5R , TC , 1608 ,R/TP		
6	C409	CAP,CERAMIC,CHIP	ECCH0000112	15 pF,50V,J,NP0,TC,1005,R/TP		
6	C410	CAP,CERAMIC,CHIP	ECCH0000182	0.1 uF,10V ,K ,X5R ,HD , 1005 ,R/TP		
6	C412	CAP,CERAMIC,CHIP	ECCH0005801	2.2 uF,6.3V ,K ,X5R , TC , 1608 ,R/TP		
6	C413	CAP,CERAMIC,CHIP	ECCH0000112	15 pF,50V,J,NP0,TC,1005,R/TP		
6	C414	CAP,CERAMIC,CHIP	ECCH0005801	2.2 uF,6.3V ,K ,X5R , TC , 1608 ,R/TP		
6	C415	CAP,CERAMIC,CHIP	ECCH0000182	0.1 uF,10V ,K ,X5R ,HD , 1005 ,R/TP		
6	C501	CAP,CERAMIC,CHIP	ECCH0000196	0.75 pF,50V ,C ,NP0 ,TC , 1005 ,R/TP		
6	C502	CAP,CERAMIC,CHIP	ECCH0000143	1 nF,50V,K,X7R,HD,1005,R/TP		
6	C503	CAP,CERAMIC,CHIP	ECCH0000182	0.1 uF,10V ,K ,X5R ,HD , 1005 ,R/TP		
6	C504	CAP,CERAMIC,CHIP	ECCH0000112	15 pF,50V,J,NP0,TC,1005,R/TP		
6	C505	CAP,CERAMIC,CHIP	ECCH0000393	22 uF,6.3V ,M ,X5R ,HD ,2012 ,R/TP		
6	C506	CAP,CERAMIC,CHIP	ECCH0000117	27 pF,50V,J,NP0,TC,1005,R/TP		
6	C507	CAP,CERAMIC,CHIP	ECCH0000117	27 pF,50V,J,NP0,TC,1005,R/TP		
6	C508	CAP,CERAMIC,CHIP	ECCH0000117	27 pF,50V,J,NP0,TC,1005,R/TP		
6	C509	CAP,CERAMIC,CHIP	ECCH0000393	22 uF,6.3V ,M ,X5R ,HD ,2012 ,R/TP		
6	C510	CAP,CERAMIC,CHIP	ECCH0000182	0.1 uF,10V ,K ,X5R ,HD , 1005 ,R/TP		
6	C511	CAP,CERAMIC,CHIP	ECCH0000186	33 pF,50V ,J ,NP0 ,TC , 1005 ,R/TP		
6	C512	CAP,CERAMIC,CHIP	ECCH0000120	39 pF,50V,J,NP0,TC,1005,R/TP		
6	C513	CAP,CERAMIC,CHIP	ECCH0000120	39 pF,50V,J,NP0,TC,1005,R/TP		
6	C514	CAP,CERAMIC,CHIP	ECCH0000182	0.1 uF,10V ,K ,X5R ,HD , 1005 ,R/TP		
6	C515	CAP,CERAMIC,CHIP	ECCH0000186	33 pF,50V ,J ,NP0 ,TC , 1005 ,R/TP		

12. EXPLODED VIEW & REPLACEMENT PART LIST

Level	Location No.	Description	Part Number	Specification	Color	Remark
6	C516	CAP,CERAMIC,CHIP	ECCH0000110	10 pF,50V,D,NP0,TC,1005,R/TP		
6	C517	CAP,CERAMIC,CHIP	ECCH0000186	33 pF,50V ,J ,NP0 ,TC ,1005 ,R/TP		
6	C518	CAP,CERAMIC,CHIP	ECCH0000393	22 uF,6.3V ,M ,X5R ,HD ,2012 ,R/TP		
6	C519	CAP,CERAMIC,CHIP	ECCH0000155	10 nF,16V,K,X7R,HD,1005,R/TP		
6	C521	CAP,CERAMIC,CHIP	ECCH0000155	10 nF,16V,K,X7R,HD,1005,R/TP		
6	C527	CAP,CERAMIC,CHIP	ECCH0000167	0.1 uF,6.3V,K,X5R,HD,1005,R/TP		
6	C528	CAP,CERAMIC,CHIP	ECCH0000155	10 nF,16V,K,X7R,HD,1005,R/TP		
6	C530	CAP,CERAMIC,CHIP	ECCH0000128	100 pF,50V,J,NP0,TC,1005,R/TP		
6	C531	CAP,CERAMIC,CHIP	ECCH0000143	1 nF,50V,K,X7R,HD,1005,R/TP		
6	C533	CAP,CERAMIC,CHIP	ECCH0005801	2.2 uF,6.3V ,K ,X5R ,TC ,1608 ,R/TP		
6	C534	CAP,CERAMIC,CHIP	ECCH0000143	1 nF,50V,K,X7R,HD,1005,R/TP		
6	C535	CAP,CERAMIC,CHIP	ECCH0000117	27 pF,50V,J,NP0,TC,1005,R/TP		
6	CN303	CONNECTOR,I/O	ENRY0005301	3 PIN,0.5 mm,ETC , ,1.48Offset		
6	D101	DIODE,SWITCHING	EDSY0017301	VSM ,15 V,100 mA,R/TP ,PB-FREE		
6	D401	DIODE,SWITCHING	EDSY0012101	US-FLAT ,30 V,1 A,R/TP ,2.5*1.25*0.6(t)		
6	FL301	FILTER,EMI/POWER	SFEY0007101	SMD ,1CH,1608Feedthru ESD/EMI filter for power		
6	FL501	FILTER,SEPERATOR	SFAY0006503	900 ,1800.1900 ,3.7 dB,3.8 dB,30 dB,30 dB,ETC ,5.2*4.0*1.8 Size, Triple FEM with unbalanced SAW		
6	J201	CONN,JACK/PLUG, EARPHONE	ENJE0003102	4 ,4 PIN,BOSS-2		
6	J301	CONN,SOCKET	ENSY0014601	6 PIN,ETC , ,2.54 mm,H=2.3		
6	L101	INDUCTOR,CHIP	ELCH0001556	270 nH,J ,1608 ,R/TP ,		
6	L402	INDUCTOR,CHIP	ELCH0004711	22 nH,J ,1005 ,R/TP ,		
6	L502	INDUCTOR,CHIP	ELCH0005013	4.7 nH,S ,1005 ,R/TP ,		
6	M401	IC	EUSY0239102	6.9 * 7.9 * 1.5 mm ,28 PIN,R/TP ,Bluetooth Module v1.2, 26MHz, For GSM		
6	Q302	TR,BJT,NPN	EQBN0007101	EMT3 ,0.15 W,R/TP ,LOW FREQUENCY		
6	R101	RES,CHIP	ERHY0000225	200 ohm,1/16W,J,1005,R/TP		
6	R102	RES,CHIP	ERHY0010201	1.2 Mohm,1/16W ,F ,1005 ,R/TP		
6	R103	RES,CHIP	ERHY0000106	100 ohm,1/16W,F,1005,R/TP		
6	R105	RES,CHIP	ERHY0000280	100K ohm,1/16W,J,1005,R/TP		
6	R107	RES,CHIP	ERHY0000512	10M ohm,1/16W,J,1608,R/TP		
6	R108	RES,CHIP	ERHY0000152	82K ohm,1/16W,F,1005,R/TP		

12. EXPLODED VIEW & REPLACEMENT PART LIST

Level	Location No.	Description	Part Number	Specification	Color	Remark
6	R109	RES,CHIP	ERHY0000202	4.7 ohm,1/16W,J,1005,R/TP		
6	R111	RES,CHIP	ERHY0000202	4.7 ohm,1/16W,J,1005,R/TP		
6	R113	RES,CHIP	ERHY0000261	10K ohm,1/16W,J,1005,R/TP		
6	R114	RES,CHIP	ERHY0000280	100K ohm,1/16W,J,1005,R/TP		
6	R115	RES,CHIP	ERHY0000261	10K ohm,1/16W,J,1005,R/TP		
6	R116	RES,CHIP	ERHY0000220	100 ohm,1/16W,J,1005,R/TP		
6	R117	RES,CHIP	ERHY0000201	0 ohm,1/16W,J,1005,R/TP		
6	R201	RES,CHIP	ERHY0000149	68K ohm,1/16W,F,1005,R/TP		
6	R202	RES,CHIP	ERHY0000149	68K ohm,1/16W,F,1005,R/TP		
6	R203	RES,CHIP	ERHY0000269	30K ohm,1/16W,J,1005,R/TP		
6	R204	RES,CHIP	ERHY0000138	33K ohm,1/16W,F,1005,R/TP		
6	R205	RES,CHIP	ERHY0000250	3.3K ohm,1/16W,J,1005,R/TP		
6	R206	RES,CHIP	ERHY0000201	0 ohm,1/16W,J,1005,R/TP		
6	R208	RES,CHIP	ERHY0000280	100K ohm,1/16W,J,1005,R/TP		
6	R210	RES,CHIP	ERHY0000201	0 ohm,1/16W,J,1005,R/TP		
6	R211	RES,CHIP	ERHY0000201	0 ohm,1/16W,J,1005,R/TP		
6	R212	RES,CHIP	ERHY0000241	1K ohm,1/16W,J,1005,R/TP		
6	R213	RES,CHIP	ERHY0000241	1K ohm,1/16W,J,1005,R/TP		
6	R214	RES,CHIP	ERHY0000265	20K ohm,1/16W,J,1005,R/TP		
6	R215	RES,CHIP	ERHY0000244	1.5K ohm,1/16W,J,1005,R/TP		
6	R216	RES,CHIP	ERHY0000241	1K ohm,1/16W,J,1005,R/TP		
6	R217	RES,CHIP	ERHY0000265	20K ohm,1/16W,J,1005,R/TP		
6	R218	RES,CHIP	ERHY0000247	2.2K ohm,1/16W,J,1005,R/TP		
6	R219	RES,CHIP	ERHY0000220	100 ohm,1/16W,J,1005,R/TP		
6	R220	RES,CHIP	ERHY0000296	1M ohm,1/16W,J,1005,R/TP		
6	R221	RES,CHIP	ERHY0000201	0 ohm,1/16W,J,1005,R/TP		
6	R222	RES,CHIP	ERHY0000220	100 ohm,1/16W,J,1005,R/TP		
6	R223	RES,CHIP	ERHY0000220	100 ohm,1/16W,J,1005,R/TP		
6	R224	RES,CHIP	ERHY0000201	0 ohm,1/16W,J,1005,R/TP		
6	R225	RES,CHIP	ERHY0000202	4.7 ohm,1/16W,J,1005,R/TP		
6	R226	RES,CHIP	ERHY0000247	2.2K ohm,1/16W,J,1005,R/TP		
6	R229	RES,CHIP	ERHY0000291	330K ohm,1/16W,J,1005,R/TP		

12. EXPLODED VIEW & REPLACEMENT PART LIST

Level	Location No.	Description	Part Number	Specification	Color	Remark
6	R230	RES,CHIP	ERHY0000296	1M ohm,1/16W,J,1005,R/TP		
6	R232	RES,CHIP	ERHY0000201	0 ohm,1/16W,J,1005,R/TP		
6	R233	RES,CHIP	ERHY0000201	0 ohm,1/16W,J,1005,R/TP		
6	R234	RES,CHIP	ERHY0000201	0 ohm,1/16W,J,1005,R/TP		
6	R309	RES,CHIP	ERHY0000280	100K ohm,1/16W,J,1005,R/TP		
6	R310	RES,CHIP	ERHY0000280	100K ohm,1/16W,J,1005,R/TP		
6	R311	RES,CHIP	ERHY0000280	100K ohm,1/16W,J,1005,R/TP		
6	R312	RES,CHIP	ERHY0000280	100K ohm,1/16W,J,1005,R/TP		
6	R313	RES,CHIP	ERHY0000280	100K ohm,1/16W,J,1005,R/TP		
6	R314	RES,CHIP	ERHY0000201	0 ohm,1/16W,J,1005,R/TP		
6	R315	RES,CHIP	ERHY0000213	47 ohm,1/16W,J,1005,R/TP		
6	R316	RES,CHIP	ERHY0000213	47 ohm,1/16W,J,1005,R/TP		
6	R317	RES,CHIP	ERHY0000201	0 ohm,1/16W,J,1005,R/TP		
6	R318	RES,CHIP	ERHY0000213	47 ohm,1/16W,J,1005,R/TP		
6	R324	RES,CHIP	ERHY0000201	0 ohm,1/16W,J,1005,R/TP		
6	R325	RES,CHIP	ERHY0000213	47 ohm,1/16W,J,1005,R/TP		
6	R326	RES,CHIP	ERHY0000213	47 ohm,1/16W,J,1005,R/TP		
6	R327	RES,CHIP	ERHY0000213	47 ohm,1/16W,J,1005,R/TP		
6	R328	RES,CHIP	ERHY0000201	0 ohm,1/16W,J,1005,R/TP		
6	R329	RES,CHIP	ERHY0000213	47 ohm,1/16W,J,1005,R/TP		
6	R330	RES,CHIP	ERHY0000213	47 ohm,1/16W,J,1005,R/TP		
6	R331	RES,CHIP	ERHY0000213	47 ohm,1/16W,J,1005,R/TP		
6	R332	RES,CHIP	ERHY0000213	47 ohm,1/16W,J,1005,R/TP		
6	R333	RES,CHIP	ERHY0000213	47 ohm,1/16W,J,1005,R/TP		
6	R334	RES,CHIP	ERHY0000280	100K ohm,1/16W,J,1005,R/TP		
6	R335	RES,CHIP	ERHY0000201	0 ohm,1/16W,J,1005,R/TP		
6	R337	RES,CHIP	ERHY0000280	100K ohm,1/16W,J,1005,R/TP		
6	R345	RES,CHIP	ERHY0000265	20K ohm,1/16W,J,1005,R/TP		
6	R355	RES,CHIP	ERHY0000262	12K ohm,1/16W,J,1005,R/TP		
6	R356	RES,CHIP	ERHY0000262	12K ohm,1/16W,J,1005,R/TP		
6	R357	RES,CHIP	ERHY0000203	10 ohm,1/16W,J,1005,R/TP		
6	R358	RES,CHIP	ERHY0000203	10 ohm,1/16W,J,1005,R/TP		

12. EXPLODED VIEW & REPLACEMENT PART LIST

Level	Location No.	Description	Part Number	Specification	Color	Remark
6	R359	RES,CHIP	ERHY0000201	0 ohm,1/16W,J,1005,R/TP		
6	R365	RES,CHIP	ERHY0000244	1.5K ohm,1/16W,J,1005,R/TP		
6	R401	RES,CHIP	ERHY0000125	10K ohm,1/16W,F,1005,R/TP		
6	R402	RES,CHIP	ERHY0000125	10K ohm,1/16W,F,1005,R/TP		
6	R403	RES,CHIP	ERHY0000201	0 ohm,1/16W,J,1005,R/TP		
6	R404	RES,CHIP	ERHY0000230	330 ohm,1/16W,J,1005,R/TP		
6	R405	RES,CHIP	ERHY0000140	36K ohm,1/16W,F,1005,R/TP		
6	R406	RES,CHIP	ERHY0000280	100K ohm,1/16W,J,1005,R/TP		
6	R407	RES,CHIP	ERHY0000125	10K ohm,1/16W,F,1005,R/TP		
6	R408	RES,CHIP	ERHY0000125	10K ohm,1/16W,F,1005,R/TP		
6	R409	RES,CHIP	ERHY0000201	0 ohm,1/16W,J,1005,R/TP		
6	R410	RES,CHIP	ERHY0000213	47 ohm,1/16W,J,1005,R/TP		
6	R411	RES,CHIP	ERHY0000213	47 ohm,1/16W,J,1005,R/TP		
6	R413	RES,CHIP	ERHY0000213	47 ohm,1/16W,J,1005,R/TP		
6	R414	RES,CHIP	ERHY0000213	47 ohm,1/16W,J,1005,R/TP		
6	R415	RES,CHIP	ERHY0000213	47 ohm,1/16W,J,1005,R/TP		
6	R416	RES,CHIP	ERHY0000213	47 ohm,1/16W,J,1005,R/TP		
6	R417	RES,CHIP	ERHY0000261	10K ohm,1/16W,J,1005,R/TP		
6	R502	RES,CHIP	ERHY0000201	0 ohm,1/16W,J,1005,R/TP		
6	R503	RES,CHIP	ERHY0000201	0 ohm,1/16W,J,1005,R/TP		
6	R504	RES,CHIP	ERHY0000201	0 ohm,1/16W,J,1005,R/TP		
6	R506	RES,CHIP	ERHY0000201	0 ohm,1/16W,J,1005,R/TP		
6	R507	RES,CHIP	ERHY0000296	1M ohm,1/16W,J,1005,R/TP		
6	R508	RES,CHIP	ERHY0000261	10K ohm,1/16W,J,1005,R/TP		
6	R510	RES,CHIP	ERHY0000201	0 ohm,1/16W,J,1005,R/TP		
6	R511	RES,CHIP	ERHY0000201	0 ohm,1/16W,J,1005,R/TP		
6	SW501	CONN,RF SWITCH	ENWY0002301	ANGLE ,SMD ,0.8 dB,		
6	U101	IC	EUSY0181601	BGA ,148 PIN,R/TP ,GSM ANALOG BASEBAND, Pb Free		
6	U102	IC	EUSY0280401	HVSO5 ,5 PIN,R/TP ,150mA CMOS LDO WITH OUTPUT CONTROL / 2.85V		
6	U103	IC	EUSY0181504	CSP BGA ,204 PIN,R/TP ,AD6527 w/USB		

12. EXPLODED VIEW & REPLACEMENT PART LIST

Level	Location No.	Description	Part Number	Specification	Color	Remark
6	U201	IC	EUSY0227901	SON5-P-0.35(fSV) ,5 PIN,R/TP ,2-INPUT AND GATE, Pb Free		
6	U202	IC	EUSY0229501	88 BALL MATRIX SCSP (8*11*1.2) ,80 PIN,R/TP ,256M + 64M PSRAM / IO 3.0V / BOTTOM BOOT / PB FREE		
6	U203	IC	EUSY0259801	WLCSP ,67 PIN,R/TP ,WLCSP ,67PIN,R/TP ,MA5Si2(64POLY MIDI / Internal D-AMP)		
6	U205	IC	EUSY0077701	SC70-5 ,5 PIN,R/TP ,1.8V Low Voltage Comparator with Rail-to-Rail Input, Pb Free		
6	U206	IC	EUSY0204801	SC82-AB (SC70-4) ,4 PIN,R/TP ,80mA CMOS LOW IQ LDO VOLTAGE REGULATOR / 2.5V		
6	U207	IC	EUSY0119002	4X3 UCSP / CODE : B12-4 ,10 PIN,R/TP ,DUAL SPDT ANALOG SWITCHES(Pb Free)		
6	U301	IC	EUSY0163901	uCSP ,10 PIN,R/TP ,Dual Analog Switch, 300MHz Bandwidth		
6	U302	DIODE,TVS	EDTY0006501	SC70-6L ,5.25 V,100 W,R/TP ,		
6	U401	IC	EUSY0254701	DFN 3*3*0.9 ,10 PIN,R/TP ,Charger IC, I Max 1A, Wall Adaptor/USB Charger		
6	U402	IC	EUSY0223002	HVSO5F ,5 PIN,R/TP ,150mA CMOS LDO WITH OUTPUT CONTROL / 2.8V		
6	U403	IC	EUSY0227901	SON5-P-0.35(fSV) ,5 PIN,R/TP ,2-INPUT AND GATE, Pb Free		
6	U404	IC	EUSY0163901	uCSP ,10 PIN,R/TP ,Dual Analog Switch, 300MHz Bandwidth		
6	U501	IC	EUSY0263001	MCM ,64 PIN,R/TP ,RFIC integrated PAM, 6 *11Size		
6	U502	IC	EUSY0216301	SC70 ,5 PIN,R/TP ,Single 2-Input NAND Gate		
6	VA201	VARISTOR	SEVY0003901	5.5 V ,SMD ,480pF, 1005		
6	VA202	VARISTOR	SEVY0003901	5.5 V ,SMD ,480pF, 1005		
6	VA204	VARISTOR	SEVY0003901	5.5 V ,SMD ,480pF, 1005		
6	VA205	VARISTOR	SEVY0003901	5.5 V ,SMD ,480pF, 1005		
6	VA306	VARISTOR	SEVY0003901	5.5 V ,SMD ,480pF, 1005		
6	VA307	VARISTOR	SEVY0003901	5.5 V ,SMD ,480pF, 1005		
6	VA309	VARISTOR	SEVY0003901	5.5 V ,SMD ,480pF, 1005		
6	X101	X-TAL	EXXY0004602	.032768 MHz,20 PPM,12.5 pF,65000 ohm,SMD ,6.9*1.4*1.3 ,		
6	X501	VCTCXO	EXSK0006201	13 MHz,2 PPM,10 pF,SMD ,3.2*2.5*1.0 ,		
5	SAFD00	PCB ASSY,MAIN,SMT TOP	SAFD0062001			
6	C105	CAP,CERAMIC,CHIP	ECCH0000167	0.1 uF,6.3V,K,X5R,HD,1005,R/TP		
6	C106	CAP,CERAMIC,CHIP	ECCH0000167	0.1 uF,6.3V,K,X5R,HD,1005,R/TP		
6	C108	CAP,CERAMIC,CHIP	ECCH0000163	47 nF,10V,K,X5R,HD,1005,R/TP		

12. EXPLODED VIEW & REPLACEMENT PART LIST

Level	Location No.	Description	Part Number	Specification	Color	Remark
6	C109	CAP,CERAMIC,CHIP	ECCH0000163	47 nF,10V,K,X5R,HD,1005,R/TP		
6	C131	CAP,CERAMIC,CHIP	ECCH0000143	1 nF,50V,K,X7R,HD,1005,R/TP		
6	C150	CAP,CERAMIC,CHIP	ECCH0000120	39 pF,50V,J,NP0,TC,1005,R/TP		
6	C151	CAP,CERAMIC,CHIP	ECCH0004904	1 uF,6.3V ,K ,X5R , TC , 1005 ,R/TP		
6	C230	CAP,CERAMIC,CHIP	ECCH0004904	1 uF,6.3V ,K ,X5R , TC , 1005 ,R/TP		
6	C244	CAP,CERAMIC,CHIP	ECCH0000120	39 pF,50V,J,NP0,TC,1005,R/TP		
6	C250	CAP,CERAMIC,CHIP	ECCH0004904	1 uF,6.3V ,K ,X5R , TC , 1005 ,R/TP		
6	C310	CAP,CERAMIC,CHIP	ECCH0004904	1 uF,6.3V ,K ,X5R , TC , 1005 ,R/TP		
6	C311	CAP,CERAMIC,CHIP	ECCH0004904	1 uF,6.3V ,K ,X5R , TC , 1005 ,R/TP		
6	C312	CAP,CERAMIC,CHIP	ECCH0004904	1 uF,6.3V ,K ,X5R , TC , 1005 ,R/TP		
6	C313	CAP,CERAMIC,CHIP	ECCH0004904	1 uF,6.3V ,K ,X5R , TC , 1005 ,R/TP		
6	C314	CAP,CERAMIC,CHIP	ECCH0004904	1 uF,6.3V ,K ,X5R , TC , 1005 ,R/TP		
6	C315	CAP,CERAMIC,CHIP	ECCH0004904	1 uF,6.3V ,K ,X5R , TC , 1005 ,R/TP		
6	C317	CAP,CERAMIC,CHIP	ECCH0006201	4.7 uF,6.3V ,K ,X5R , TC , 1608 ,R/TP		
6	C323	CAP,CERAMIC,CHIP	ECCH0004904	1 uF,6.3V ,K ,X5R , TC , 1005 ,R/TP		
6	C324	CAP,CERAMIC,CHIP	ECCH0004904	1 uF,6.3V ,K ,X5R , TC , 1005 ,R/TP		
6	C416	CAP,CERAMIC,CHIP	ECCH0000167	0.1 uF,6.3V,K,X5R,HD,1005,R/TP		
6	C417	CAP,CERAMIC,CHIP	ECCH0000110	10 pF,50V,D,NP0,TC,1005,R/TP		
6	C536	CAP,CERAMIC,CHIP	ECCH0004903	1 uF,6.3V , Z ,Y5V , TC , 1005 ,R/TP		
6	C538	CAP,CERAMIC,CHIP	ECCH0005801	2.2 uF,6.3V ,K ,X5R , TC , 1608 ,R/TP		
6	C601	CAP,CERAMIC,CHIP	ECCH0000117	27 pF,50V,J,NP0,TC,1005,R/TP		
6	C602	CAP,CERAMIC,CHIP	ECCH0000117	27 pF,50V,J,NP0,TC,1005,R/TP		
6	C603	CAP,CERAMIC,CHIP	ECCH0000117	27 pF,50V,J,NP0,TC,1005,R/TP		
6	C604	CAP,CERAMIC,CHIP	ECCH0000117	27 pF,50V,J,NP0,TC,1005,R/TP		
6	C609	CAP,CERAMIC,CHIP	ECCH0000117	27 pF,50V,J,NP0,TC,1005,R/TP		
6	C610	CAP,CERAMIC,CHIP	ECCH0000117	27 pF,50V,J,NP0,TC,1005,R/TP		
6	C611	CAP,CERAMIC,CHIP	ECCH0000117	27 pF,50V,J,NP0,TC,1005,R/TP		
6	C612	CAP,CERAMIC,CHIP	ECCH0000117	27 pF,50V,J,NP0,TC,1005,R/TP		
6	C613	CAP,CERAMIC,CHIP	ECCH0000115	22 pF,50V,J,NP0,TC,1005,R/TP		
6	C614	CAP,CERAMIC,CHIP	ECCH0000115	22 pF,50V,J,NP0,TC,1005,R/TP		
6	C615	CAP,CERAMIC,CHIP	ECCH0000117	27 pF,50V,J,NP0,TC,1005,R/TP		
6	C616	CAP,CERAMIC,CHIP	ECCH0000117	27 pF,50V,J,NP0,TC,1005,R/TP		

12. EXPLODED VIEW & REPLACEMENT PART LIST

Level	Location No.	Description	Part Number	Specification	Color	Remark
6	C617	CAP,CERAMIC,CHIP	ECCH0000117	27 pF,50V,J,NP0,TC,1005,R/TP		
6	C618	CAP,CERAMIC,CHIP	ECCH0000117	27 pF,50V,J,NP0,TC,1005,R/TP		
6	C619	CAP,CERAMIC,CHIP	ECCH0000117	27 pF,50V,J,NP0,TC,1005,R/TP		
6	C620	CAP,CERAMIC,CHIP	ECCH0000117	27 pF,50V,J,NP0,TC,1005,R/TP		
6	C621	CAP,CERAMIC,CHIP	ECCH0000117	27 pF,50V,J,NP0,TC,1005,R/TP		
6	C622	CAP,CERAMIC,CHIP	ECCH0000117	27 pF,50V,J,NP0,TC,1005,R/TP		
6	C623	CAP,CERAMIC,CHIP	ECCH0000117	27 pF,50V,J,NP0,TC,1005,R/TP		
6	C624	CAP,CERAMIC,CHIP	ECCH0000117	27 pF,50V,J,NP0,TC,1005,R/TP		
6	C625	CAP,CERAMIC,CHIP	ECCH0000117	27 pF,50V,J,NP0,TC,1005,R/TP		
6	C626	CAP,CERAMIC,CHIP	ECCH0000117	27 pF,50V,J,NP0,TC,1005,R/TP		
6	C629	CAP,CERAMIC,CHIP	ECCH0000120	39 pF,50V,J,NP0,TC,1005,R/TP		
6	C630	CAP,CERAMIC,CHIP	ECCH0000120	39 pF,50V,J,NP0,TC,1005,R/TP		
6	C631	CAP,CERAMIC,CHIP	ECCH0004904	1 uF,6.3V ,K ,X5R ,TC ,1005 ,R/TP		
6	C633	CAP,CERAMIC,CHIP	ECCH0004904	1 uF,6.3V ,K ,X5R ,TC ,1005 ,R/TP		
6	C637	CAP,CERAMIC,CHIP	ECCH0000117	27 pF,50V,J,NP0,TC,1005,R/TP		
6	C639	CAP,CERAMIC,CHIP	ECCH0004904	1 uF,6.3V ,K ,X5R ,TC ,1005 ,R/TP		
6	C640	CAP,CERAMIC,CHIP	ECCH0004904	1 uF,6.3V ,K ,X5R ,TC ,1005 ,R/TP		
6	C644	CAP,CERAMIC,CHIP	ECCH0000117	27 pF,50V,J,NP0,TC,1005,R/TP		
6	CN601	CONNECTOR,BOARD TO BOARD	ENBY0031101	60 PIN,0.4 mm,ETC , ,H=1.0, Female		
6	D301	DIODE,SWITCHING	EDSY0012301	1-1E1A ,85 V,1 A,R/TP ,P=200mW, IFM=200mA		
6	FL601	VARISTOR	SEVY0005501	18 V , ,SMD ,4ch. R-Varistor Array(100Ohm,15pF)		
6	FL602	VARISTOR	SEVY0005501	18 V , ,SMD ,4ch. R-Varistor Array(100Ohm,15pF)		
6	FL603	VARISTOR	SEVY0005501	18 V , ,SMD ,4ch. R-Varistor Array(100Ohm,15pF)		
6	FL604	VARISTOR	SEVY0005501	18 V , ,SMD ,4ch. R-Varistor Array(100Ohm,15pF)		
6	FL605	VARISTOR	SEVY0005501	18 V , ,SMD ,4ch. R-Varistor Array(100Ohm,15pF)		
6	FL606	VARISTOR	SEVY0005501	18 V , ,SMD ,4ch. R-Varistor Array(100Ohm,15pF)		
6	FL607	VARISTOR	SEVY0005501	18 V , ,SMD ,4ch. R-Varistor Array(100Ohm,15pF)		
6	FL608	VARISTOR	SEVY0005501	18 V , ,SMD ,4ch. R-Varistor Array(100Ohm,15pF)		
6	L301	INDUCTOR,CHIP	ELCH0000716	68 nH,J ,1608 ,R/TP ,PBFREE		
6	L302	INDUCTOR,CHIP	ELCH0000716	68 nH,J ,1608 ,R/TP ,PBFREE		
6	LD301	DIODE,LED,CHIP	EDLH0006001	Blue ,1608 ,R/TP ,Blue SMD LED		

12. EXPLODED VIEW & REPLACEMENT PART LIST

Level	Location No.	Description	Part Number	Specification	Color	Remark
6	LD302	DIODE,LED,CHIP	EDLH0006001	Blue , 1608 ,R/TP ,Blue SMD LED		
6	LD303	DIODE,LED,CHIP	EDLH0006001	Blue , 1608 ,R/TP ,Blue SMD LED		
6	LD304	DIODE,LED,CHIP	EDLH0006001	Blue , 1608 ,R/TP ,Blue SMD LED		
6	LD305	DIODE,LED,CHIP	EDLH0006001	Blue , 1608 ,R/TP ,Blue SMD LED		
6	LD306	DIODE,LED,CHIP	EDLH0006001	Blue , 1608 ,R/TP ,Blue SMD LED		
6	LD307	DIODE,LED,CHIP	EDLH0006001	Blue , 1608 ,R/TP ,Blue SMD LED		
6	LD308	DIODE,LED,CHIP	EDLH0006001	Blue , 1608 ,R/TP ,Blue SMD LED		
6	Q301	TR,BJT,ARRAY	EQBA0002701	EMT6 , 150 mW,R/TP ,NPN, PNP, 150 mA		
6	R110	RES,CHIP	ERHY0000267	24K ohm,1/16W,J,1005,R/TP		
6	R112	RES,CHIP	ERHY0000291	330K ohm,1/16W,J,1005,R/TP		
6	R227	RES,CHIP	ERHY0000201	0 ohm,1/16W,J,1005,R/TP		
6	R319	RES,CHIP	ERHY0000220	100 ohm,1/16W,J,1005,R/TP		
6	R320	RES,CHIP	ERHY0000220	100 ohm,1/16W,J,1005,R/TP		
6	R321	RES,CHIP	ERHY0000220	100 ohm,1/16W,J,1005,R/TP		
6	R322	RES,CHIP	ERHY0000220	100 ohm,1/16W,J,1005,R/TP		
6	R323	RES,CHIP	ERHY0000220	100 ohm,1/16W,J,1005,R/TP		
6	R338	RES,CHIP	ERHY0000201	0 ohm,1/16W,J,1005,R/TP		
6	R339	RES,CHIP	ERHY0000201	0 ohm,1/16W,J,1005,R/TP		
6	R340	RES,CHIP	ERHY0000201	0 ohm,1/16W,J,1005,R/TP		
6	R342	RES,CHIP	ERHY0000273	47K ohm,1/16W,J,1005,R/TP		
6	R343	RES,CHIP	ERHY0000207	20 ohm,1/16W,J,1005,R/TP		
6	R344	RES,CHIP	ERHY0000226	220 ohm,1/16W,J,1005,R/TP		
6	R346	RES,CHIP	ERHY0000244	1.5K ohm,1/16W,J,1005,R/TP		
6	R347	RES,CHIP	ERHY0000213	47 ohm,1/16W,J,1005,R/TP		
6	R348	RES,CHIP	ERHY0000213	47 ohm,1/16W,J,1005,R/TP		
6	R349	RES,CHIP	ERHY0000213	47 ohm,1/16W,J,1005,R/TP		
6	R350	RES,CHIP	ERHY0000213	47 ohm,1/16W,J,1005,R/TP		
6	R351	RES,CHIP	ERHY0000213	47 ohm,1/16W,J,1005,R/TP		
6	R352	RES,CHIP	ERHY0000213	47 ohm,1/16W,J,1005,R/TP		
6	R354	RES,CHIP	ERHY0000258	7.5K ohm,1/16W,J,1005,R/TP		
6	R361	RES,CHIP	ERHY0000201	0 ohm,1/16W,J,1005,R/TP		
6	R362	RES,CHIP	ERHY0000201	0 ohm,1/16W,J,1005,R/TP		

12. EXPLODED VIEW & REPLACEMENT PART LIST

Level	Location No.	Description	Part Number	Specification	Color	Remark
6	R366	RES,CHIP	ERHY0000213	47 ohm,1/16W,J,1005,R/TP		
6	R367	RES,CHIP	ERHY0000213	47 ohm,1/16W,J,1005,R/TP		
6	R412	RES,CHIP	ERHY0000274	51K ohm,1/16W,J,1005,R/TP		
6	R509	RES,CHIP	ERHY0000280	100K ohm,1/16W,J,1005,R/TP		
6	R601	RES,CHIP	ERHY0000261	10K ohm,1/16W,J,1005,R/TP		
6	R602	RES,CHIP	ERHY0000220	100 ohm,1/16W,J,1005,R/TP		
6	R603	RES,CHIP	ERHY0000201	0 ohm,1/16W,J,1005,R/TP		
6	R605	RES,CHIP	ERHY0000201	0 ohm,1/16W,J,1005,R/TP		
6	R606	RES,CHIP	ERHY0000201	0 ohm,1/16W,J,1005,R/TP		
6	R607	RES,CHIP	ERHY0000201	0 ohm,1/16W,J,1005,R/TP		
6	R608	RES,CHIP	ERHY0000220	100 ohm,1/16W,J,1005,R/TP		
6	R615	RES,CHIP	ERHY0000201	0 ohm,1/16W,J,1005,R/TP		
6	R616	RES,CHIP	ERHY0000201	0 ohm,1/16W,J,1005,R/TP		
6	R617	RES,CHIP	ERHY0000201	0 ohm,1/16W,J,1005,R/TP		
6	R618	RES,CHIP	ERHY0000201	0 ohm,1/16W,J,1005,R/TP		
6	R619	RES,CHIP	ERHY0000201	0 ohm,1/16W,J,1005,R/TP		
6	R620	RES,CHIP	ERHY0000201	0 ohm,1/16W,J,1005,R/TP		
6	R621	RES,CHIP	ERHY0000201	0 ohm,1/16W,J,1005,R/TP		
6	R622	RES,CHIP	ERHY0000201	0 ohm,1/16W,J,1005,R/TP		
6	U204	IC	EUSY0119002	4X3 UCSP / CODE : B12-4 ,10 PIN,R/TP ,DUAL SPDT ANALOG SWITCHES(Pb Free)		
6	U208	IC	EUSY0159101	MICRO FOOT(6 BUMP) ,6 PIN,R/TP ,SPDT ANALOG SWITCH		
6	U405	IC	EUSY0200301	Leadless chip ,6 PIN,R/TP ,Hall S/W, Pb Free		
6	U503	IC	EUSY0223006	HVSO5 ,5 PIN,R/TP ,1.8V ,150mA LDO		
6	VA203	VARISTOR	SEVY0003901	5.5 V , ,SMD ,480pF, 1005		
6	VA301	VARISTOR	SEVY0000702	14 V,10% ,SMD ,		
6	VA302	VARISTOR	SEVY0000702	14 V,10% ,SMD ,		
6	VA303	VARISTOR	SEVY0000702	14 V,10% ,SMD ,		
6	VA304	VARISTOR	SEVY0000702	14 V,10% ,SMD ,		
6	VA305	VARISTOR	SEVY0000702	14 V,10% ,SMD ,		
6	VA310	VARISTOR	SEVY0000702	14 V,10% ,SMD ,		
5	SPFY00	PCB,MAIN	SPFY0110801	FR-4 ,0.8 mm,BUILD-UP 8 ,		

12. EXPLODED VIEW & REPLACEMENT PART LIST

12.3 Accessory

Note: This Chapter is used for reference, Part order is ordered by SBOM standard on GCSC

Level	Location No.	Description	Part Number	Specification	Color	Remark
3	SBPP00	BATTERY PACK,LI-POLYMER	SBPP0013601	3.7 V,800 mAh,1 CELL,PRISMATIC ,S5200 CEA, 383450, Silver, Pb-Free	Silver	60
3	SGDY00	DATA CABLE	SGDY0005601	DK-40G ,K8000 24PIN I/O + USB A TYPE		
3	SGEY00	EAR PHONE/EAR MIKE SET	SGEY0003505	S5200 ,3501 TO BLACK COLOR		
3	SSAD00	ADAPTOR,AC-DC	SSAD0007835	FREE ,50 Hz,5.2 V,800 mA,CE,CB ,UK(IO.24P)		