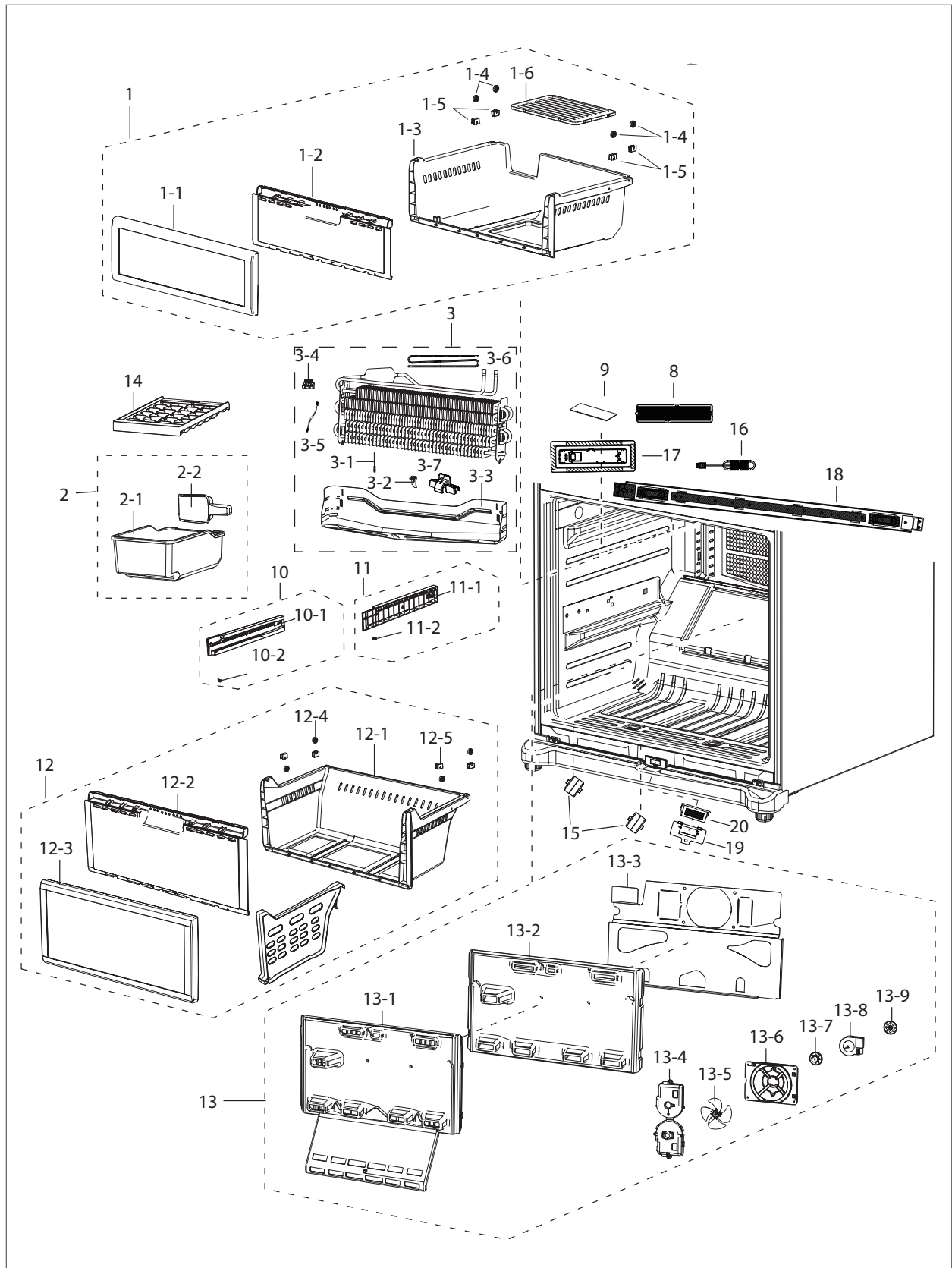


EXPLODED VIEW PART LIST

Freezer



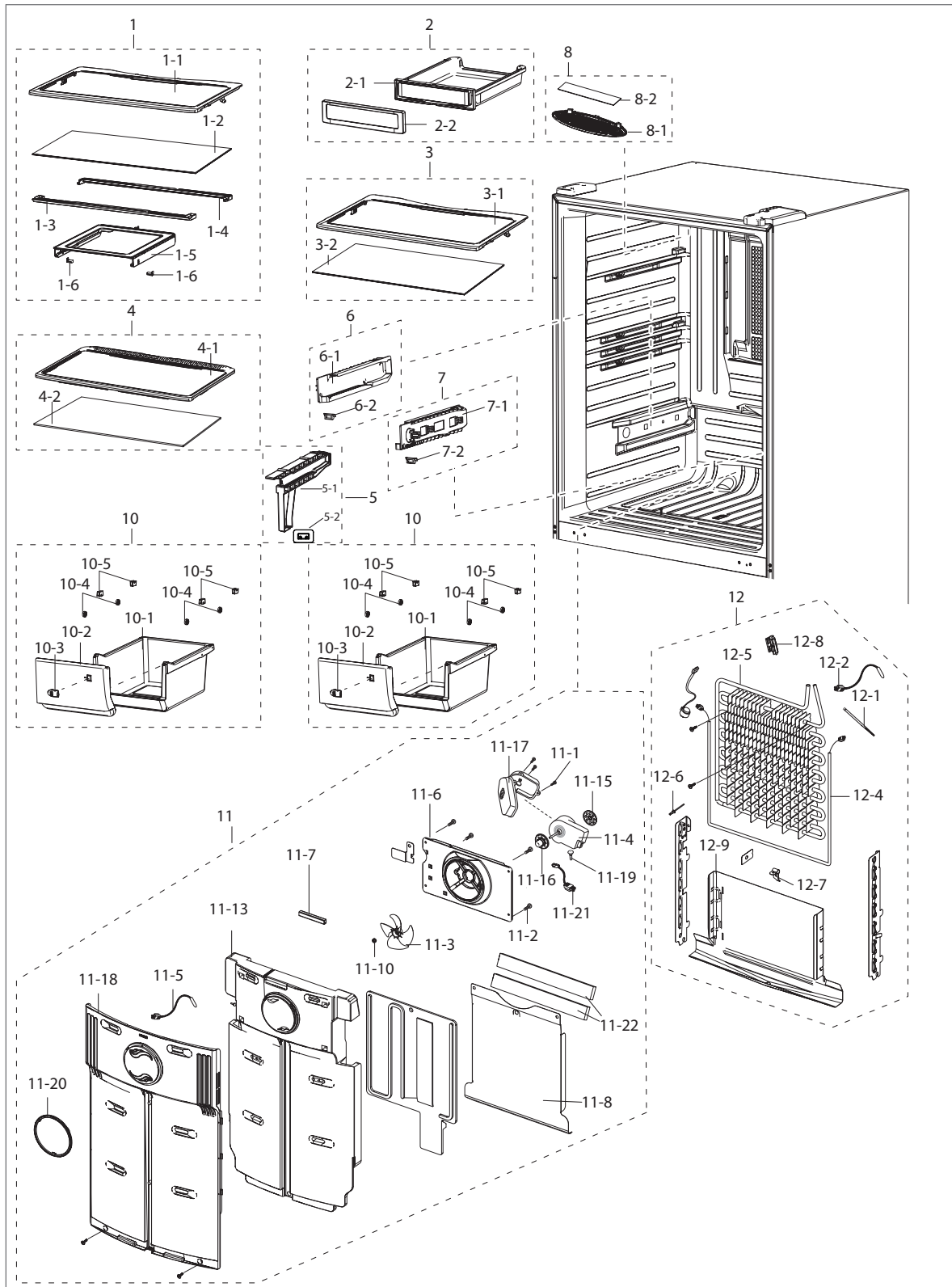
EXPLODED VIEW PART LIST

• Parts List of Freezer

NO	CODE NO	PART NAME	Specification	Quantity	SA/SNA	SVC NO
1	DA97-11625A	ASSY TRAY-FRE UPP	NW2-PJT,19CU ft	1	SA	M0121
1-1	DA63-04455A	COVER-TRAY FRE UPP A	NW2-PJT,HIPS,-,-,-,	1	SNA	A1279
1-2	DA63-04456A	COVER-TRAY FRE UPP B	NW2-PJT,GPPS,-,-,-,	1	SNA	A1280
1-3	DA63-05606A	TRAY FRE-UPP	NW2-SEARS,HIPS,COOL WHITE(S)	1	SNA	Z1172
1-4	DA66-00856A	ROLLER-FRE	NW2,POM,NTR	4	SNA	0
1-5	DA61-07403A	FIXER-ROLLER	NW2,NY-66,NTR	4	SNA	0
1-6	DA64-02823A	WINDOW-TRAY FRE UPP	NW2,GPPS,NTR	1	SNA	0
2	DA97-11609A	ASSY CASE-ICE CUBE	NW2	1	SA	M0455
2-1	DA61-07401A	CASE-ICE CUBE	NW2,PP,COOL WHITE	1	SNA	M0358
2-2	DA67-03065A	SCOOP ICE	NW2,PP,NTR	1	SNA	A1237
3	DA96-00844C	ASSY EVAP-FRE	NW2-PJT,PIN,230V/240W,R-60	1	SA	A0163
3-1	6041-001027	RIVET-BLIND	AL/MG2/STEEL,OD3.2,L9,NTR	1	SNA	0
3-2	DA61-07451A	PLATE-EVAP HEATER	NW2,AL,T0.7	1	SA	M9010
3-3	DA61-04462A	PLATE-DRAIN FRE	NW2-PJT,GALVANUME,T0.3,-	1	SNA	M9011
3-4	DA47-00432A	THERMO FUSE-ASSY	MD-PJT,250V,10A,110□,G4	1	SA	A1008
3-5	DA32-00024V	SENSOR TEMP	NW2,5V,F-SENSOR,YELLOW,450	1	SA	A1018
3-6	DA47-00423D	HEATER-METAK SHEATH FRE	NW2-PJT,230W,230	1	SA	A0920
3-7	DA61-07410A	FIXER-HEATER FRE	NW2,PP,NTR,V0	2	SA	G0205
8	DA63-05460B	COVER LAMP	SUPER STAR,GPPS,W35,L145,tran	1	SA	A0280
9	DA92-00150C	ASSY PCB KIT	110*20mm	1	SA	Z1144
10	DA97-06666A	ASSY RAIL-FRE LOW R	NW2-PJT,-,-,-,-,19IN	1	SA	A0923
10-1	DA61-04483A	RAIL-FRE LOW R	NW2-PJT,ABS,-,-,-,COOL WH	1	SNA	0
10-2	DA63-40006A	GROMMET	RAIL,NY-6,-,-,-,-,RAIL	1	SNA	0
11	DA97-06665A	ASSY RAIL-FRE LOW L	NW2-PJT,-,-,-,-,19IN	1	SA	A0922
11-1	DA61-04484A	RAIL-FRE LOW L	NW2-PJT,ABS,-,-,-,COOL WH	1	SNA	0
11-2	DA63-40006A	GROMMET	RAIL,NY-6,-,-,-,-,RAIL	1	SNA	0
12	DA97-11647A	ASSY TRAY-FRE LOW	NW2,19CU ft	1	SA	G0267
12-1	DA63-04458A	TRAY-FRE LOW	NW2-PJT,HIPS,-,-,-,COOL W	1	SNA	0
12-2	DA63-04460A	COVER-TRAY FRE LOW B	NW2-PJT,GPPS,-,-,-,	1	SNA	0
12-3	DA63-04461A	COVER-TRAY FRE LOW A	NW2-PJT,HIPS,-,-,-,	1	SNA	0
12-4	DA66-00856A	ROLLER-FRE	NW2,POM,NTR	4	SNA	0
12-5	DA61-07403A	FIXER-ROLLER	NW2,NY-66,NTR	4	SNA	0
13	DA97-11824A	ASSY COVER EVAP-FRE	NW2-PJT,110V~240V	1	SA	M0303
13-1	DA63-04444A	COVER-EVAP FRE	NW2-PJT,PP,BJ-730,NTR	1	SNA	0
13-2	DA62-03227A	INSULATION-EVAP FRE	NW2,FOAM-PS	1	SNA	0
13-3	DA61-04461A	PLATE-INS EVAP FRE	NW2-PJT,GALVALUME,T0.	1	SNA	0
13-4	DA63-01809A	COVER MOTOR-BLDC	BLDC-NEW,PP,NTR,-,-,-,-	1	SA	M0449
13-5	DA31-00279A	FAN-AX100W4CC-T1	NW2,SSEC,ABS	1	SA	M0159
13-6	DA61-07440A	CASE-MOTOR FRE	NW2,SSEC,PP,NTR	1	SNA	M0143

EXPLODED VIEW PART LIST

Fridge



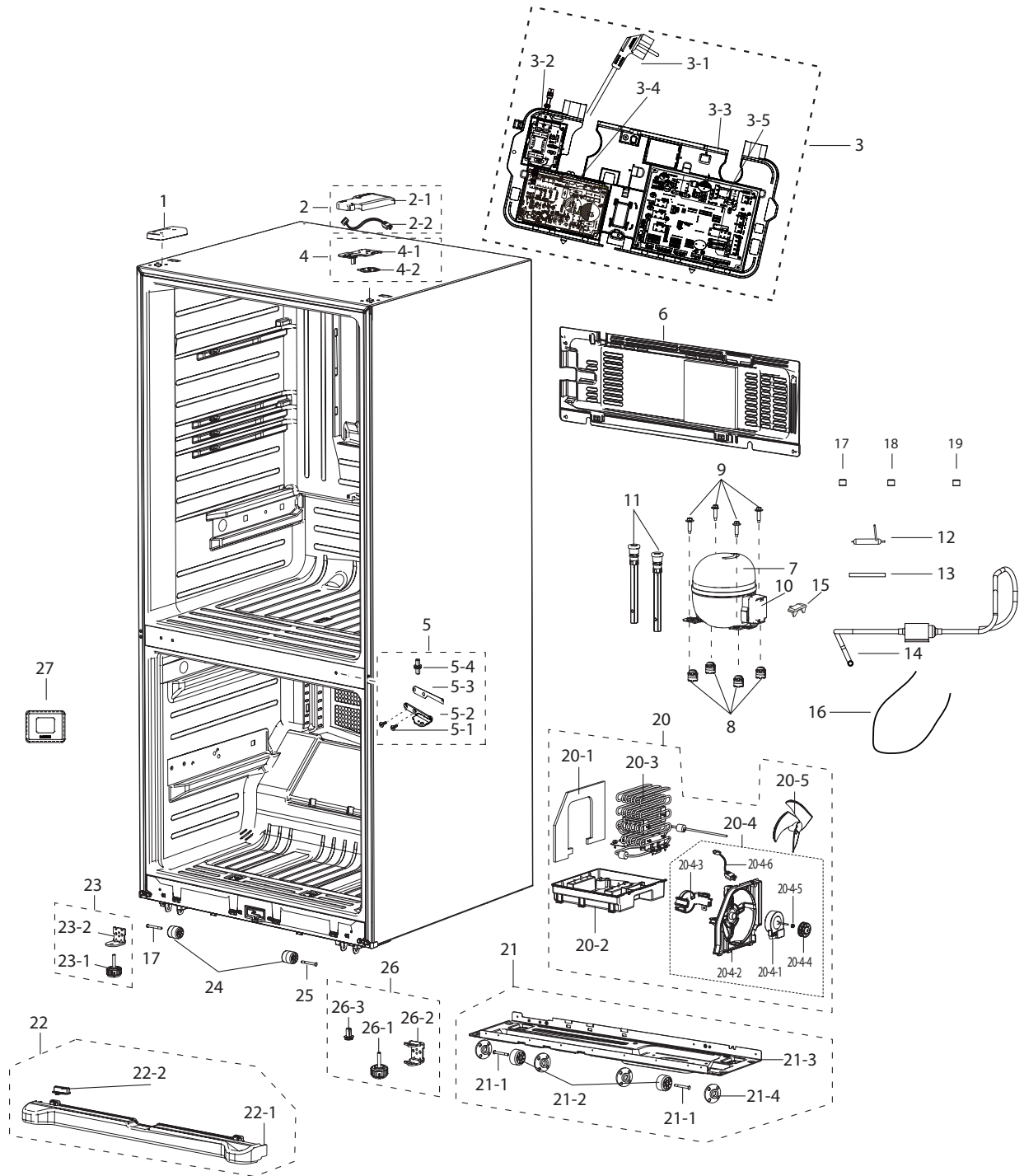
EXPLODED VIEW PART LIST

• Parts List of Fridge

NO	CODE NO	PART NAME	Specification	Quantity	SA/SNA	SVC NO
1	DA97-06685C	ASSY SHELF-REF UPP	NW2-FDR,19cu.ft	1	SA	A1198
1-1	DA64-02644A	TRIM SHELF-REF	NW2,ABS,COOL WHITE,19cu.f	1	SNA	G0411
1-2	DA64-02646A	GLASS-SHELF	NW2,GLASS,19cu.ft	1	SNA	0
1-3	DA61-04511A	SUPPORT-GUIDE RAIL FRONT	NW2,HIPS,-,-,-,	1	SNA	0
1-4	DA61-04510A	SUPPORT-GUIDE RAIL REAR	NW2,HIPS,-,-,-,C	1	SNA	0
1-5	DA61-04503A	GUIDE-RAIL	NW2,HIPS,-,-,-,COOLWHITE,19cu	1	SNA	0
1-6	DA63-00202A	GROMMET-RAIL	PA,NATURAL	2	SNA	0
2	DA97-06677B	ASSY TRAY-CHILLED ROOM	NW2,-,-,-,-,19cu.	1	SA	M0314
2-1	DA63-04463B	TRAY CHIL ROOM	NW2,GPPS,334.5,347.3,NTR,	1	SNA	A0679
2-2	DA63-04465A	COVER-TRAY CHIL ROOM	NW2,HIPS,-,-,-,-,-,	1	SNA	0
3	DA97-06687C	ASSY SHELF-REF MID	NW2-FDR,19cu.ft	1	SA	A0909
3-1	DA64-02644A	TRIM SHELF-REF	NW2,ABS,COOL WHITE,19cu.f	1	SNA	G0411
3-2	DA64-02646A	GLASS-SHELF	NW2,GLASS,19cu.ft	1	SNA	0
4	DA97-00663C	ASSY COVER-VEG	W2-PJT,ABS+SHELF,GLASS(T4	1	SA	M0004
4-1	DA64-00449B	TRIM-COVER VEG(50)	W2-PJT,ABS,-,T2.5,SC-	1	SNA	0
4-2	DA67-00505L	SHELF GLASS	W2-PJT(50),GLASS,-,W708.5,L2	1	SNA	A0213
5	DA97-07059A	ASSY RAIL VEG-MID	NW2,-,-,-,-,19Cu.ft	1	SA	A0924
5-1	DA61-00761B	RAIL-VEG, MID	W2-PJT,ABS,T2.5,-,-,COOL-W	1	SNA	0
5-2	DA61-04875A	SUPPORT-RAIL VEG	NW2,PP,COOL WHITE	1	SNA	0
6	DA97-11733A	ASSY RAIL-VEG, L	NW2,L341.5,cool white	1	SA	A0916
6-1	DA61-60127E	RAIL-VEG	W2-PJT,ABS,T3.0,-,RIGHT,COOL-WH	1	SNA	0
6-2	DA63-40006A	GROMMET	RAIL,NY-6,-,-,-,-,-,RAIL	1	SNA	0
7	DA97-00103P	ASSY RAIL-VEG, R	W2-PJT,ABS,L341.5,SC-02	1	SA	A0915
7-1	DA61-60127E	RAIL-VEG	W2-PJT,ABS,T3.0,-,RIGHT,COOL-WH	1	SNA	0
7-2	DA63-40006A	GROMMET	RAIL,NY-6,-,-,-,-,-,RAIL	1	SNA	0
8	DA97-08606D	ASSY COVER LAMP-REF	NW2,NW2-FDR	1	SA	0
8-1	DA63-05430C	COVER LAMP-REF	NW2,NW2-FDR,PC,NATURAL	1	SNA	M0006
8-2	DA92-00206C	ASSY PCB KIT LED	NW2&NW2 FDR,36*250,CEM-	1	SA	G0069
10	DA97-11620B	ASSY CASE VEG	NW2,19cu.ft	2	SA	A0217
10-1	DA61-00759B	CASE-VEG, REF	W2-PJT,HIPS,-,SC-02740R,-,	2	SNA	0
10-2	DA63-04445B	COVER-VEG REF	NW2-PJT,GPPS,350.5,232.6,N	2	SNA	0
10-3	DA64-00656A	KNOB-HUMIDITY	W2-PJT,HIPS,COOL WHITE(SC-	2	SA	M0192
10-4	DA66-00856A	ROLLER-FRE	NW2,POM,NTR	8	SNA	0
10-5	DA61-07403A	FIXER-ROLLER	NW2,NY-66,NTR	8	SNA	0
11	DA97-11823A	ASSY COVER-EVAP REF	NW2-PJT,TWIN COOLING	1	SA	M0080
11-1	6002-000213	SCREW-TAPPING	TH,+,PW,-,M4,L16,ZPC(WHT),	3	SNA	G0412
11-2	6002-001122	SCREW-TAPPING	TH,+,PW,-,M4,L16,ZPC(WHT),	4	SNA	G0412
11-3	DA31-00279A	FAN-AX100W4CC-T1	NW2,SSEC,ABS	1	SA	M0159
11-4	DA31-00146H	MOTOR BLDC	DRCP5030LA,1550,DC12V,230mA,-	1	SA	A0998

EXPLODED VIEW PART LIST

Cabinet



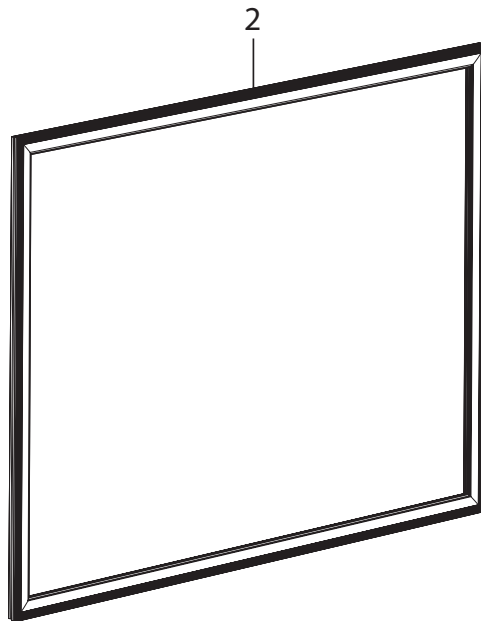
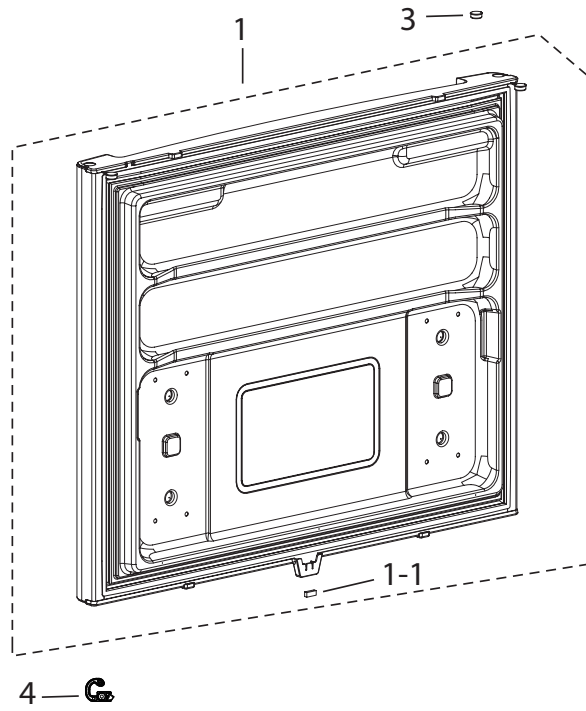
EXPLODED VIEW PART LIST

• Parts List of Cabinet

NO	CODE NO	PART NAME	Specification	Quantity	SA/SNA	SVC NO
1	DA63-07554C	COVER HINGE-UP LEFT	NW2,ABS,-,CREAMY STA	1	SA	0
2	DA97-06705A	ASSY COVER HINGE-UPP R	NW2,ABS,-,-,-,-,-	1	SA	A0243
2-1	DA63-04441A	COVER HINGE-UPP R	NW2-PJT,ABS,T2.0,-,-,-	1	SNA	A0244
2-2	DA34-00043C	SWITCH REED-ASSY	200VDC,1.5A,-	1	SA	G0068
3	DA97-11846A	ASSY CASE-PBA MAIN	NW2,INVERTER	1	SNA	A0815
3-1	3903-000297	CBF-POWER CORD	EU,UCP-2,2P HOUSING & RIN	1	SA	A0273
3-2	DA27-00027C	COIL FILTER-EMI FILTER	NW2-PJT,20mH,40,8	1	SA	A1213
3-3	DA61-07420A	CASE PCB-PANEL	NW2-PJT,SSEC,ABS,NEO VICT	1	SA	A0927
3-4	DA92-00305A	ASSY PCB SUB INVERTER	NW2,220V~240V,R600	1	SA	M0309
3-5	DA92-00419M	ASSY PCB MAIN	220V 50Hz,NW2	1	SA	A0952
4	DA97-06716C	ASSY HINGE UPP-R	NW2,BLACK,SHIM HINGE(T2	1	SC	M0101
4-1	DA61-04476B	HINGE-UPP R	NW2-PJT,SHP1,T3.0,-,-,BLACK,	1	SNA	A0813
4-2	DA63-02527B	SHIM-HINGE UPP	NW2-PJT,HIPS,T2.0	1	SNA	0
5	DA97-11584A	ASSY HINGE-MID	NW2,SWING	1	SA	M0345
5-1	6003-001727	SCREW-TAPTYPE	BH,+,-,B,M4,L10,ZPC(BLK),S	2	SNA	M0210
5-2	DA61-07449A	HINGE-MID R	AW2,SCP1,T4.5	1	SNA	0
5-3	DA63-04694A	SHIM HINGE-MID	AW2,RD-PVC,T2.0,NTR	1	SNA	A0514
5-4	DA66-00610A	SHAFT-HINGE MID	NW2,MSWR10,-,-,-,-,-	1	SNA	A0518
6	DA97-07971A	ASSY COVER-COMP	W2,ASSY,T0.4	1	SA	M0398
7	ENV4A5GL2J/SJ1	COMPRESSOR,BLDC IPM,15.32CC,220-240V,FAN	0	1	SA	Z1180
8	DA63-02617A	GROMMET COMP	USP05,EPDM,OD27.0,BLACK	4	SA	Z1112
9	DA60-20008A	BOLT-HEX	SWCH45K,WHITE,ZPC	4	SA	A0564
10	DA63-04553A	COVER RELAY	N300X,T2.1,V-0,5VA,SSEC,BLAC	1	SNA	Z1032
11	DA97-11608A	ASSY CAP-DRAIN	NW2,-,-,SOFT-PVC	2	SNA	M0067
12	DA62-01469H	DRYER	W07,CU,OD18.8,T0.46,L115	1	SA	A0669
13	DA73-00050G	PIPE-CONN	TP2(M),ID5.15,OD6.35,T0.6	1	SA	0
14	DA97-11684A	ASSY PIPE CONNECT-SUCTION	NW2-PJT,SSEC,I	1	SA	M0105
15	DA34-00004C	RELAY PROTECTOR O/L	4TM319SFBY-82,BK190	1	SC	A0575
16	DA39-20326W	WIRE HARNESS-EARTH	BCD-285WNLVS,YEL/GRN,	1	SA	A0562
17	DA60-00280A	FITTING-LOKRING 33	GRAND/SAM/HERMES,11SM	1	SA	0
18	DA60-00281A	FITTING-LOKRING 43	GRAND/SAM/HERMES,11SM	1	SA	0
19	DA60-00279A	FITTING-LOKRING 16	GRAND/SAM/HERMES,11SM	1	SA	0
20	DA97-11725C	ASSY TRAY-DRAIN WATER	NW2,SCRAP PP	1	SNA	A0749
20-1	DA62-03531A	SEAL-SUB-COND	AW-PJT,FOAM-PE,T7,W178,L23	1	SNA	0
20-2	DA63-04466B	TRAY DRAIN-WATER	NW,PP SCRAP,-,-,-,-,-	1	SA	Z1023
20-3	DA97-11678A	ASSY PIPE-SUB COND	NW2-PJT	1	SA	A0906
20-4	DA97-11726A	ASSY SUPPORT-CIRCUIT MOTOR	NW2-PJT,1550R	1	SNA	M0116
20-4-1	DA31-00146B	MOTOR BLDC	DRCP5030LA,1550,DC12V,230mA,-	1	SA	A0998
20-4-2	DA61-07425A	SUPPORT-CIRCUIT MOTOR	NW2,SSEC,ABS,NTR	1	SA	A0907

EXPLODED VIEW PART LIST

Freezer Door



EXPLODED VIEW PART LIST

Fridge Door

