

SECTION 4 EXPLODED VIEW

NOTE:

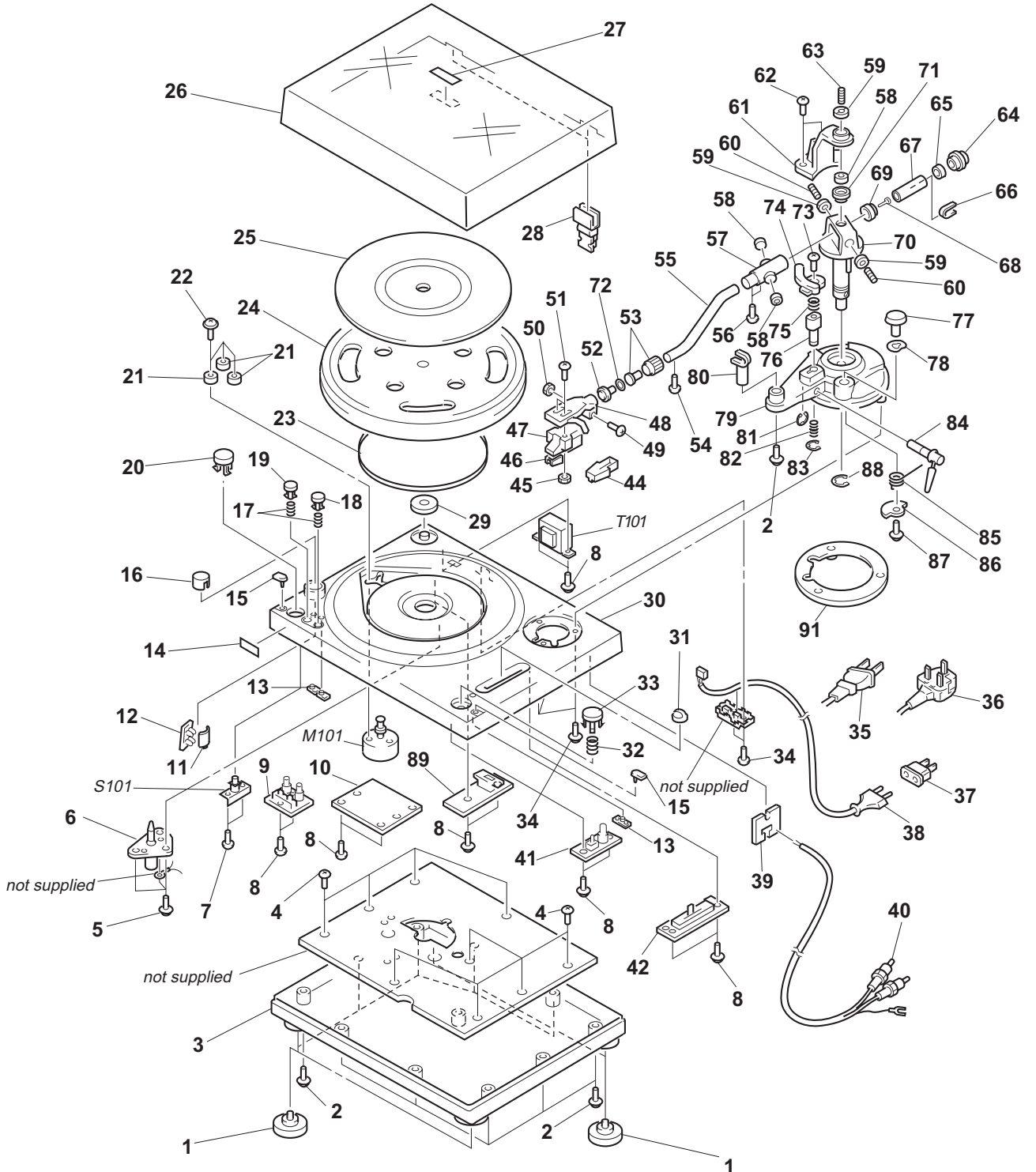
- -XX and -X mean standardized parts, so they may have some difference from the original one.
- Color Indication of Appearance Parts Example:
KNOB, BALANCE (WHITE) . . . (RED)

Parts Color Cabinet's Color

- Items marked "*" are not stocked since they are seldom required for routine service. Some delay should be anticipated when ordering these items.
- The mechanical parts with no reference number in the exploded views are not supplied.
- Accessories and packing materials are given in the last of the electrical parts list.

The components identified by mark Δ or dotted line with mark Δ are critical for safety. Replace only with part number specified.

Les composants identifiés par une marque Δ sont critiques pour la sécurité. Ne les remplacer que par une pièce portant le numéro spécifié.



Ref. No.	Part No.	Description	Remark	Ref. No.	Part No.	Description	Remark
1	A-4672-181-A	FOOT ASSY, RUBBER		52	4-984-830-01	PLAY (WIRE CN), HEAD SHELL	
2	4-984-810-01	SCREW (3X14) (ZNY/WPH), TAPPING		53	4-984-823-01	RECEPTERCLE (WIRE CN)	
* 3	4-984-778-01	CABINET, BOTTOM		54	4-984-822-01	SCREW (2X3) (ZNW) (PH), TAPPING	
4	4-984-786-01	SCREW (3.5X8) (BK), TAPPING		55	4-984-815-01	PIPE, ARM	
5	4-984-783-01	SCREW (3.5X8) (WPH), TAPPING		56	4-984-814-01	SCREW (2X4) (ZNW/PH), TAPPING	
6	A-4672-180-A	SHAFT ASSY, CENTER		57	4-984-817-01	HOLDER, PIPE	
7	4-984-781-01	SCREW (3X8) (B) (TYPE/BH), TAPPING		58	4-984-820-01	BEARING, PIVOT	
8	4-984-780-01	SCREW (3X10) (WPH), TAPPING		59	4-984-787-01	NUT, PIVOT	
* 9	A-4699-204-A	SPEED BOARD, COMPLETE		60	4-984-794-01	SCREW (FCS1) (HT910Q), PIVOT	
* 10	A-4699-205-A	MAIN BOARD, COMPLETE		61	4-984-819-01	COVER, TONE ARM BASE	
11	4-984-785-01	COVER, STROBO		62	4-984-818-01	SCREW (3X10) (BK) (PH), TAPPING	
* 12	A-4699-203-A	LED BOARD, COMPLETE		63	4-984-788-01	SCREW (FCS1) (HT8201), PIVOT	
* 13	4-984-771-01	INDICATOR, LED		64	4-984-838-01	WEIGHT, COUNTER	
14	4-963-404-21	EMBLEM (5-A), SONY		65	4-984-792-01	WEIGHT, KNOB	
15	4-984-770-01	CUSHION, DUST COVER		66	4-984-793-01	SPRING, PLATE KNOCK	
16	4-984-768-01	CAP, STROBO		67	4-984-791-01	BAR, WEIGHT	
17	4-984-765-01	SPRING (COIL)		68	4-984-790-01	SCREW (3X22) (PH), MACHINE	
18	4-984-769-01	SPEED (45), KNOB		69	4-984-789-01	CUSHION, WEIGHT	
19	4-984-764-01	SPEED (33), KNOB		70	A-4672-202-A	HOLDER ASSY, TONE ARM	
20	4-984-763-01	POWER, KNOB		71	4-985-814-01	HOLDER, BEARING	
21	4-984-767-01	CUSHION, MOTOR		72	4-985-813-01	WASHER, RUBBER	
22	4-984-779-01	SCREW, MOTOR SETTING		73	4-984-821-01	SCREW (2.6X8) (BK) (PH), MACHINE	
23	4-984-762-01	BELT, RUBBER		74	4-984-816-01	ARM, ELEVATION	
24	4-984-837-01	PLATTER		75	4-984-813-01	SPRING, ADJUST	
25	4-984-836-01	SHEET, RUBBER		76	4-984-812-01	SHAFT, ELEVATION	
26	4-984-761-01	COVER, DUST		77	4-984-795-01	KNOB (IFC)	
27	4-984-760-01	PLATE, DUST COVER		78	4-984-796-01	TOOTHED, WASHER	
28	A-4672-179-A	HANGER (HINGE) ASSY		79	4-984-797-01	BASE, TONE ARM	
29	4-984-839-01	ADAPTOR, EP		80	4-984-811-01	STAND, ARM	
30	4-984-766-01	CABINET (UPPER)		81	4-984-806-01	E-RING (P16)	
31	4-984-773-01	KNOB (PITCH)		82	4-984-809-01	SPRING, ELEVATION	
32	4-984-775-01	SPRING (COIL)		83	4-984-805-01	E-RING (P12.5)	
33	4-984-774-01	KNOB (PLAY/STOP)		84	4-984-798-01	LEVER, LIFTER	
34	4-984-782-01	SCREW (3X12) (WPH), TAPPING		85	4-984-808-01	SPRING, ANTI	
△ 35	1-777-361-11	CABLE, INTERFACE (MAC) (POWER CORD) (US, Canadian)		86	4-984-807-01	CAM, IFC	
△ 36	1-777-395-11	CORD, POWER (UK)		87	4-984-799-01	SCREW (3X8) (WPH), TAPPING	
△ 37	1-569-008-11	ADAPTOR, CONVERSION 2P (E)		88	4-984-800-01	E-RING (P18)	
△ 38	1-777-363-11	CORD, POWER (AEP, German, E)		* 89	A-4386-318-A	POWER PC BOARD ASSY (AEP, UK, German)	
* 39	1-662-519-11	PHONE BOARD		* 89	A-4386-319-A	POWER PC BOARD ASSY (E)	
40	1-777-364-11	CORD, CONNECTION		91	4-984-833-01	CUSHION, TONE ARM	
* 41	A-4699-206-A	PLAY/STOP BOARD, COMPLETE		M101	A-4672-201-A	MOTOR ASSY	
* 42	A-4699-207-A	VOLUME BOARD, COMPLETE		△ S101	1-762-788-11	SWITCH, PUSH (POWER)	
44	4-984-842-01	CAP, CARTRIDGE		△ T101	1-429-777-11	TRANSFORMER, POWER (US, Canadian)	
45	4-984-828-01	NUT (M2.5X0.45P) (AL)		△ T101	1-429-779-11	TRANSFORMER, POWER (AEP, UK, German)	
46	4-984-843-01	STYLUS (CN-251)		△ T101	1-429-780-11	TRANSFORMER, POWER (E)	
47	4-984-824-01	CARTRIDGE					
48	4-984-825-01	SHELL, HEAD					
49	4-984-831-01	SCREW, SETTING					
50	4-984-832-01	NUT (M2.5X0.45P) (MBSBD)					
51	4-984-829-01	SCREW, MACHINE					

The components identified by mark △ or dotted line with mark △ are critical for safety. Replace only with part number specified.	Les composants identifiés par une marque △ sont critiques pour la sécurité. Ne les remplacer que par une pièce portant le numéro spécifié.
--	--

LED **MAIN** **PLAY/STOP**

POWER **SPEED**

VOLUME

SECTION 5 ELECTRICAL PARTS LIST

NOTE:

- Due to standardization, replacements in the parts list may be different from the parts specified in the diagrams or the components used on the set.
- -XX and -X mean standardized parts, so they may have some difference from the original one.
- Since each board in this set is replaced with a complete board.
- Items marked “*” are not stocked since they are seldom required for routine service. Some delay should be anticipated when ordering these items.

The components identified by mark Δ or dotted line with mark Δ are critical for safety. Replace only with part number specified.

Les composants identifiés par une marque Δ sont critiques pour la sécurité. Ne les remplacer que par une pièce portant le numéro spécifié.

Ref. No.	Part No.	Description	Remark	Ref. No.	Part No.	Description	Remark
*	A-4699-203-A	LED BOARD, COMPLETE *****				ACCESSORIES & PACKING MATERIALS *****	

*	A-4699-205-A	MAIN BOARD, COMPLETE *****			3-550-458-00	LABEL, CAUTION, POWER SELECTOR (E)	

*	A-4699-206-A	PLAY/STOP BOARD, COMPLETE *****			3-856-727-11	MANUAL, INSTRUCTION (ENGLISH, FRENCH, SPANISH, CHINESE) (US, Canadian, AEP, UK, German, E)	

*	A-4699-204-A	SPEED BOARD, COMPLETE *****			3-856-727-21	MANUAL, INSTRUCTION (GERMAN, DUTCH, SWEDISH, ITALIAN, PORTUGUESE) (AEP, German)	

*	A-4386-318-A	POWER PC BOARD ASSY (AEP, UK, German)		*	4-984-486-01	INDIVIDUAL CARTON (US, Canadian)	
*	A-4386-319-A	POWER PC BOARD ASSY (E) *****		*	4-984-487-01	INDIVIDUAL CARTON (AEP, UK, German, E)	

*	A-4699-204-A	SPEED BOARD, COMPLETE *****		*	4-984-834-01	CUSHION (L)	

*	A-4699-207-A	VOLUME BOARD, COMPLETE *****		*	4-984-835-01	CUSHION (R)	

						A-4672-184-A	STYLUS ASSY

						MISCELLANEOUS *****	
Δ 35	1-777-361-11	CABLE, INTERFACE (MAC) (POWER CORD) (US, Canadian)					
Δ 36	1-777-395-11	CORD, POWER (UK)					
Δ 37	1-569-008-11	ADAPTOR, CONVERSION 2P (E)					
Δ 38	1-777-363-11	CORD, POWER (AEP, German, E)					
* 39	1-662-519-11	PHONE BOARD					
40	1-777-364-11	CORD, CONNECTION					
M101	A-4672-201-A	MOTOR ASSY					
Δ S101	1-762-788-11	SWITCH, PUSH (POWER)					
Δ T101	1-429-777-11	TRANSFORMER, POWER (US, Canadian)					
Δ T101	1-429-779-11	TRANSFORMER, POWER (AEP, UK, German)					
Δ T101	1-429-780-11	TRANSFORMER, POWER (E)					

PS-LX300H

9-960-690-11

Sony Corporation
Home A&V Products Company

— 8 —

English
96E0588-1
Printed in Japan
© 1996. 5
Published by Quality Engineering Dept. (Shibaura)