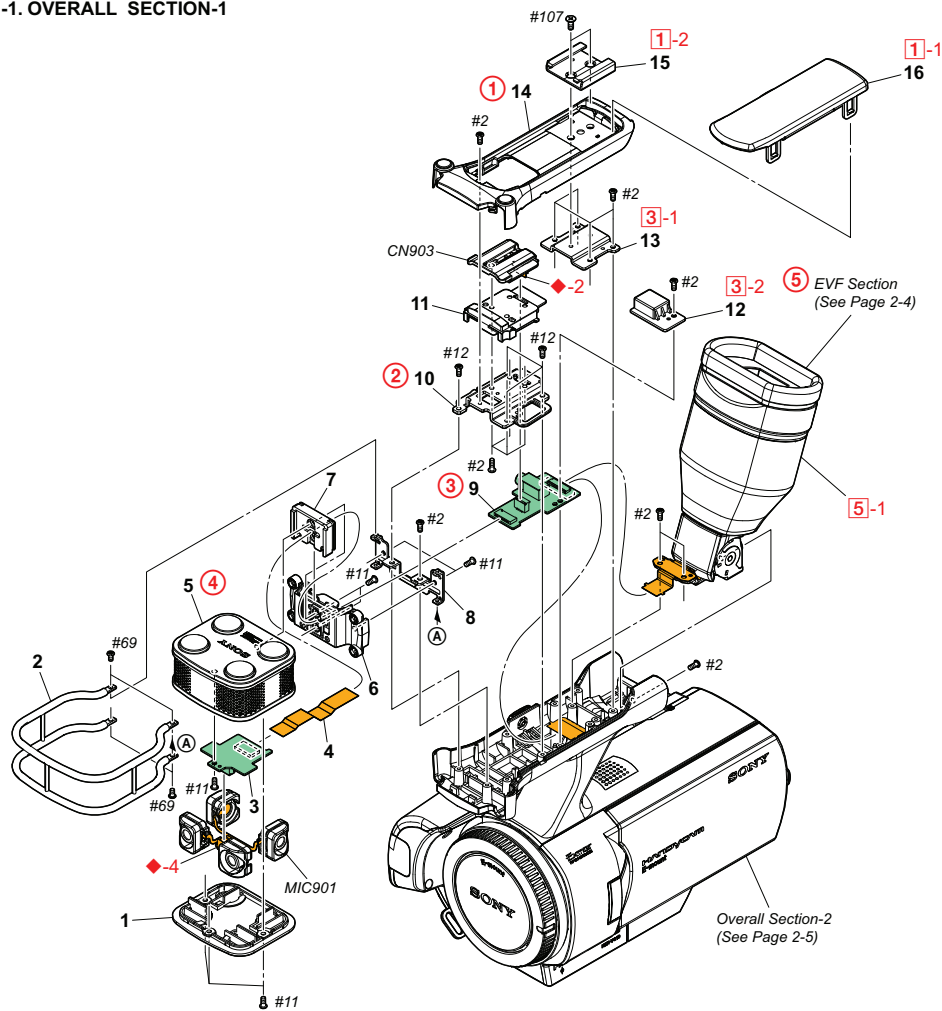


2-1. EXPLODED VIEWS

2-1-1. OVERALL SECTION-1



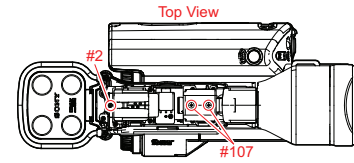
Ref. No.	Part No.	Description
1	4-257-594-01	LOWER, MIC CABINET
2	4-257-590-01	GUARD, MIC
3	A-1792-800-A	MA-469 BOARD, COMPLETE
4	1-837-980-11	CABLE, FLEXIBLE FLAT (FFC-232)
5	X-2549-596-1	CABINET ASSY, MIC
6	4-257-591-01	CABINET, GUARD
7	4-257-593-01	CUSHION, MIC
8	4-257-592-01	PLATE, GUARD FIXED
9	A-1792-807-A	GP-033 BOARD, COMPLETE
10	4-257-734-01	BRACKET, A SHOE
11	4-257-739-01	BLIND, A SHOE
* 12	4-257-740-01	RETAINER, MIC

Ref. No.	Part No.	Description
13	4-257-738-01	BRACKET, C SHOE
14	4-257-735-01	CABINET, HANDLE (UPPER)
15	3-067-469-11	SHOE, ACCESSORY
16	4-257-737-01	COVER, SHOE
CN903	1-822-402-11	SHOE CONNECTOR
MIC901	1-542-831-11	MICROPHONE UNIT (MIC36000)
#2	2-635-562-31	SCREW (M1.7)
#11	3-078-890-11	SCREW, TAPPING
#12	3-080-204-21	SCREW, TAPPING, P2
#69	2-599-475-21	SCREW (M1.7)
#107	3-032-750-01	(+) K SCREW M2

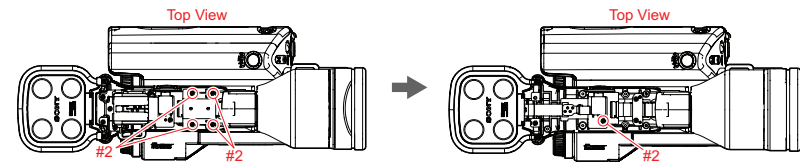
DISASSEMBLY

1. Remove to numerical order (① to ⑤) in the left figure.
2. The meaning of the sign in left figure is as follows. Be careful when disassembling.
◆-X: Flexible Board, Flat Cable, Harness

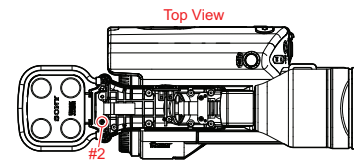
① Shoe Cover Open (①-1) → #107 X 2 → Remove the Accessory Shoe (①-2) → #2 X 1



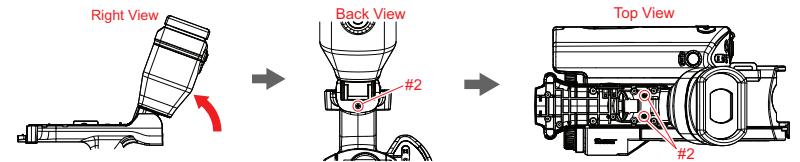
③ #2 X 4 → Remove the C Shoe Bracket (③-1) → #2 X 1 → Remove the MIC Retainer (③-2)



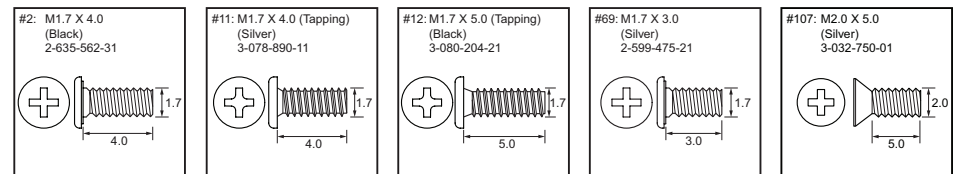
④ #2 X 1



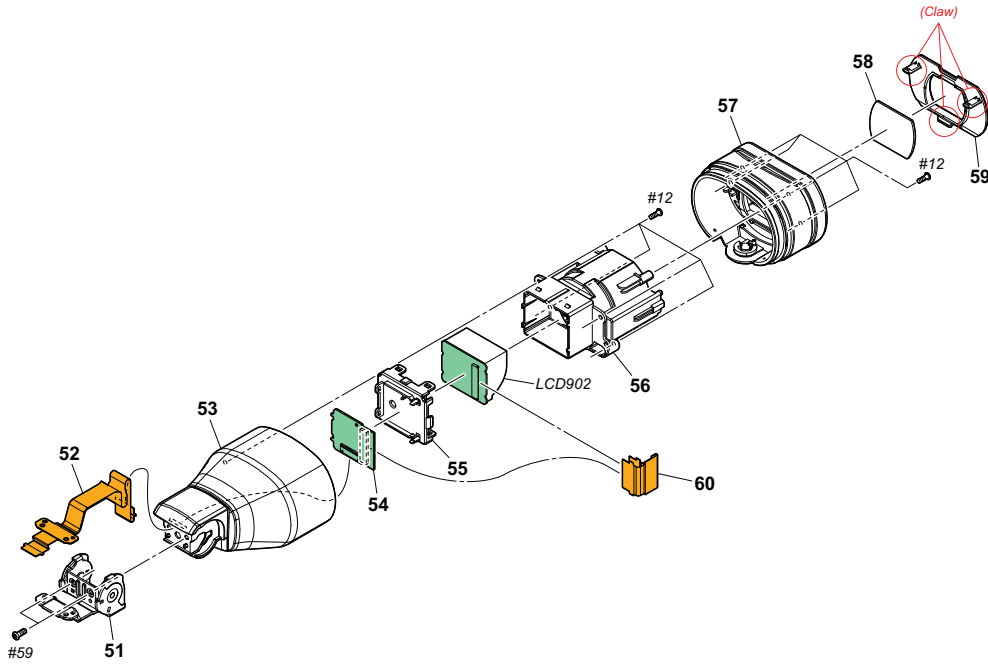
⑤ Tilt the EVF (⑤-1) → #2 X 3



Screw



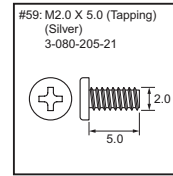
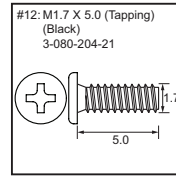
2-1-2. EVF SECTION



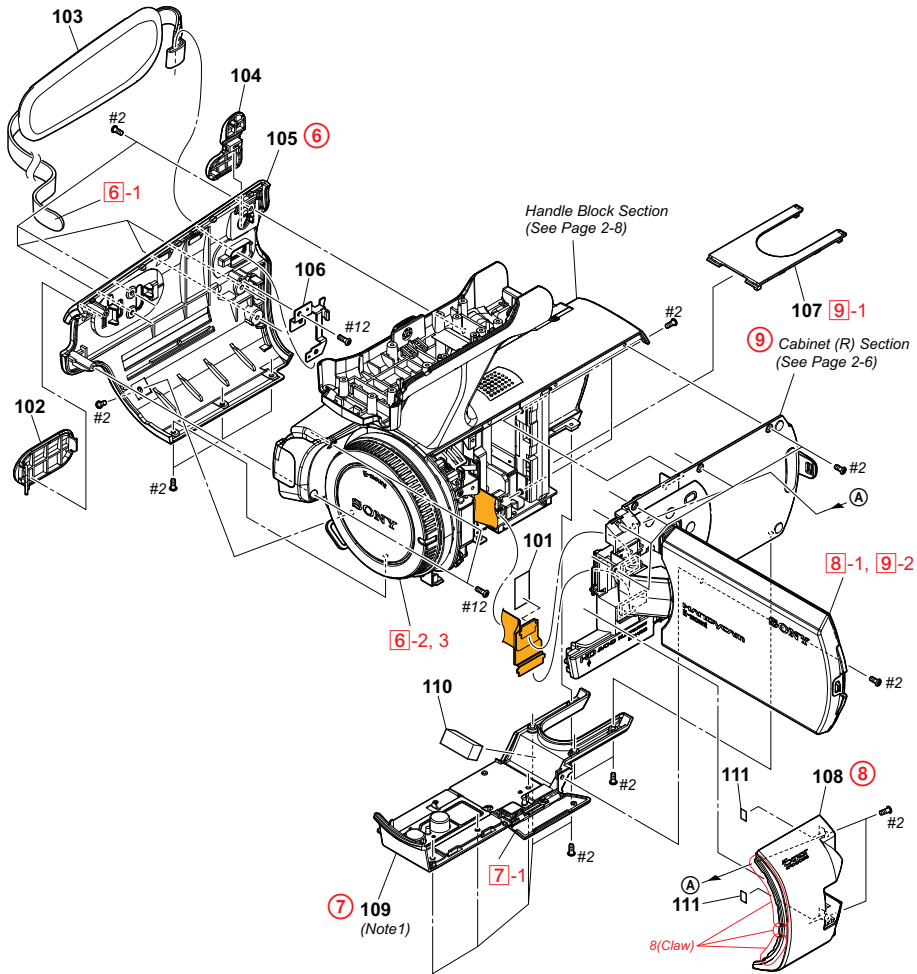
Ref. No.	Part No.	Description
51	X-2549-590-1	HINGE ASSY, VF
52	1-882-106-11	FP-1272 FLEXIBLE BOARD
53	4-257-557-01	CABINET, VF
54	A-1792-799-A	VF-180 BOARD, COMPLETE
* 55	4-257-560-01	CAP, MODULE
56	X-2549-591-1	LENS ASSY, VF
57	X-2549-592-1	EYE CUP ASSY

Ref. No.	Part No.	Description
58	4-257-559-01	WINDOW, VF
59	4-257-558-01	COVER, EYEPiece
60	1-873-733-11	FP-776 FLEXIBLE BOARD
LCD902	1-811-202-11	LCD MODULE
#12	3-080-204-21	SCREW, TAPPING, P2
#59	3-080-205-21	SCREW, TAPPING, P2

Screw



2-1-3. OVERALL SECTION-2



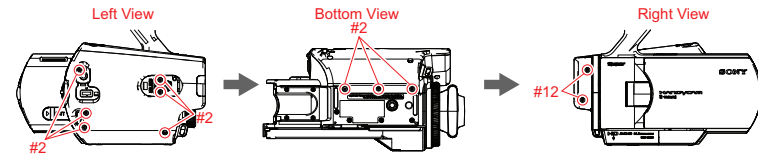
Ref. No.	Part No.	Description
101	2-590-635-01	TAPE AS 1/2
102	4-257-744-01	COVER, HM
103	4-257-747-01	BELT, GRIP
104	4-257-745-01	COVER, HP
105	4-257-743-01	CABINET (G)
* 106	4-257-746-01	BRACKET (REAR), BELT
107	4-257-733-01	PANEL, BT LOWER

Ref. No.	Part No.	Description
108	4-257-742-01	CABINET, HINGE
109	X-2549-602-1	CABINET (BM) ASSY (Note1)
110	4-260-917-01	GASKET (BM)
111	4-265-327-01	SPACER 175
#2	2-635-562-31	SCREW (M1.7)
#12	3-080-204-21	SCREW, TAPPING, P2

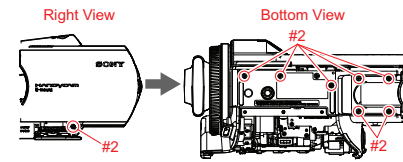
DISASSEMBLY

1. Remove to numerical order (6 to 9) in the left figure.

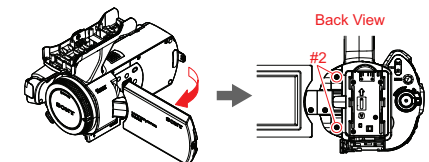
6 Remove the Grip Belt (6-1) → #2 X 9 → Remove the Body Cap (6-2) → #12 X 2 → Attach the Body Cap (6-3)



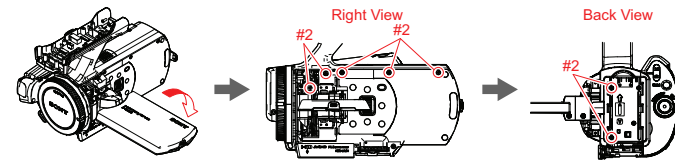
7 MS Lid Open (7-1) → #2 X 8



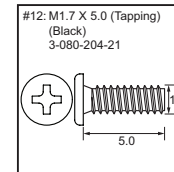
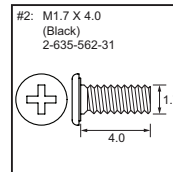
8 LCD Open (8-1) → #2 X 2



9 Remove the BT Lower Panel (9-1) → LCD Turn (9-2) → #2 X 7

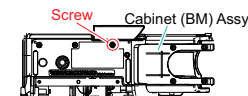


Screw

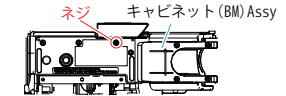


Note

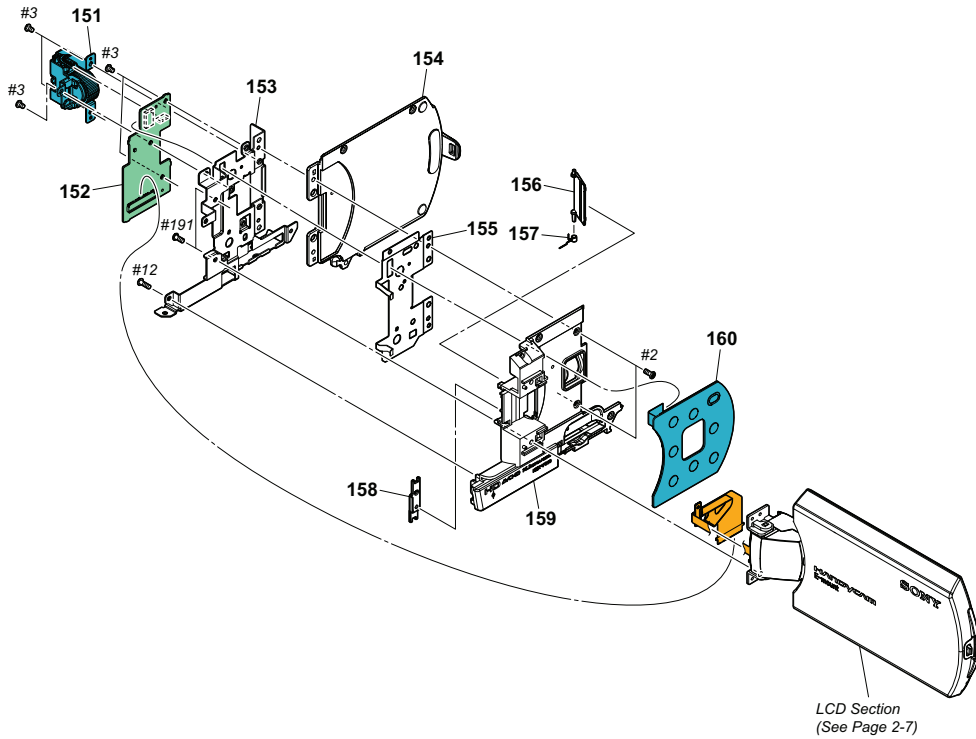
Note1: When disassembling the Cabinet (BM) Assy, make sure not to remove the screw indicated in figure.



Note1: キャビネット (BM) Assyを取り外す際、下図で示されたネジを取り外さないでください。



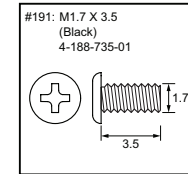
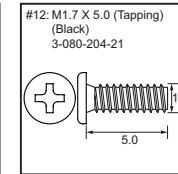
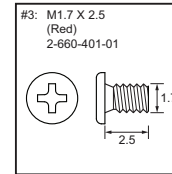
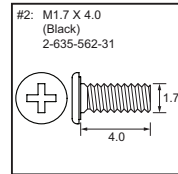
2-1-4. CABINET (R) SECTION



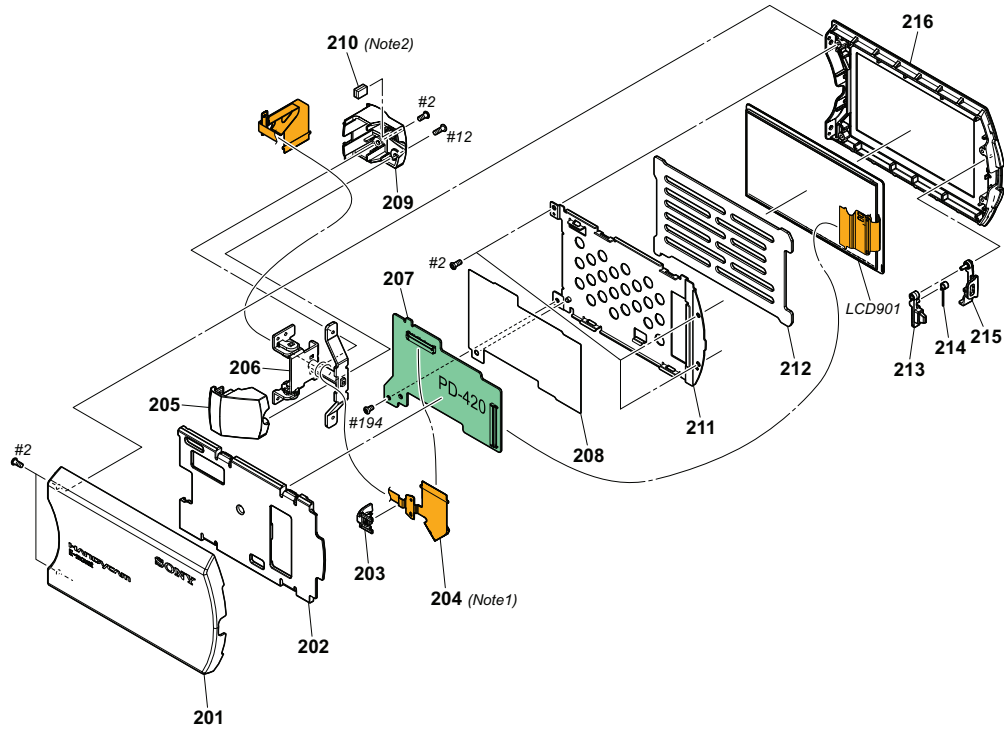
Ref. No.	Part No.	Description
151	1-489-061-11	SWITCH BLOCK, CONTROL (KP36000)
152	A-1792-804-A	CK-230 BOARD, COMPLETE
* 153	4-257-621-01	FRAME, R
154	X-2549-597-1	CABINET (R) ASSY, BT
* 155	4-257-622-01	HEAT SINK (R)
156	4-257-623-01	BLIND, HINGE
* 157	4-257-624-01	SPRING, BLIND

Ref. No.	Part No.	Description
* 158	4-257-627-01	RETAINER (R), FLEXIBLE
159	X-2549-598-1	CABINET (R) ASSY
160	1-489-063-11	SWITCH BLOCK, CONTROL (SK36000)
#2	2-635-562-31	SCREW (M1.7)
#3	2-660-401-01	SCREW (M1.7), NEW TRU-STAR, P2
#12	3-080-204-21	SCREW, TAPPING, P2
#191	4-188-735-01	SCREW (M1.7)

Screw



2-1-5. LCD SECTION

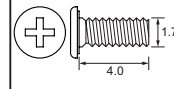


Ref. No.	Part No.	Description
201	4-257-629-01	CABINET (C), P
* 202	4-257-630-01	CABINET, P INNER
* 203	4-257-628-01	CLAMP, FLEXIBLE
204	1-882-107-11	FP-1273 FLEXIBLE BOARD (Note1)
* 205	4-257-625-01	COVER (O), HINGE
206	X-2549-599-1	HINGE (360) ASSY, PANEL
207	A-1792-803-A	PD-420 BOARD, COMPLETE
* 208	4-257-634-01	INSULATING SHEET (PD)
* 209	4-257-626-01	COVER (U), HINGE
210	1-471-504-11	MAGNET (ND5X3.5X2.4-B) (Note2)
211	4-257-632-01	RETAINER, LCD

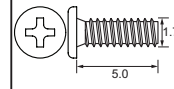
Ref. No.	Part No.	Description
* 212	4-257-633-01	CUSHION, LCD
213	4-257-635-01	LOCK, P
214	4-257-637-01	SPRING, P LOCK
215	4-257-636-01	HOLDER, P LOCK
216	4-257-631-01	CABINET (M), P
LCD901	8-753-335-38	ACX412AKM-1
#2	2-635-562-31	SCREW (M1.7)
#12	3-080-204-21	SCREW, TAPPING, P2
#194	2-660-401-21	SCREW (M1.7), NEW TRU-STAR, P2

Screw

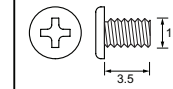
#2: M1.7 X 4.0
(Black)
2-635-562-31



#12: M1.7 X 5.0 (Tapping)
(Black)
3-080-204-21



#194: M1.7 X 3.5
(Red)
2-660-401-21



Note

Note1: Refer to "Assembly-2: Method of attachment of the FP-1273 Flexible Board" when you assemble.

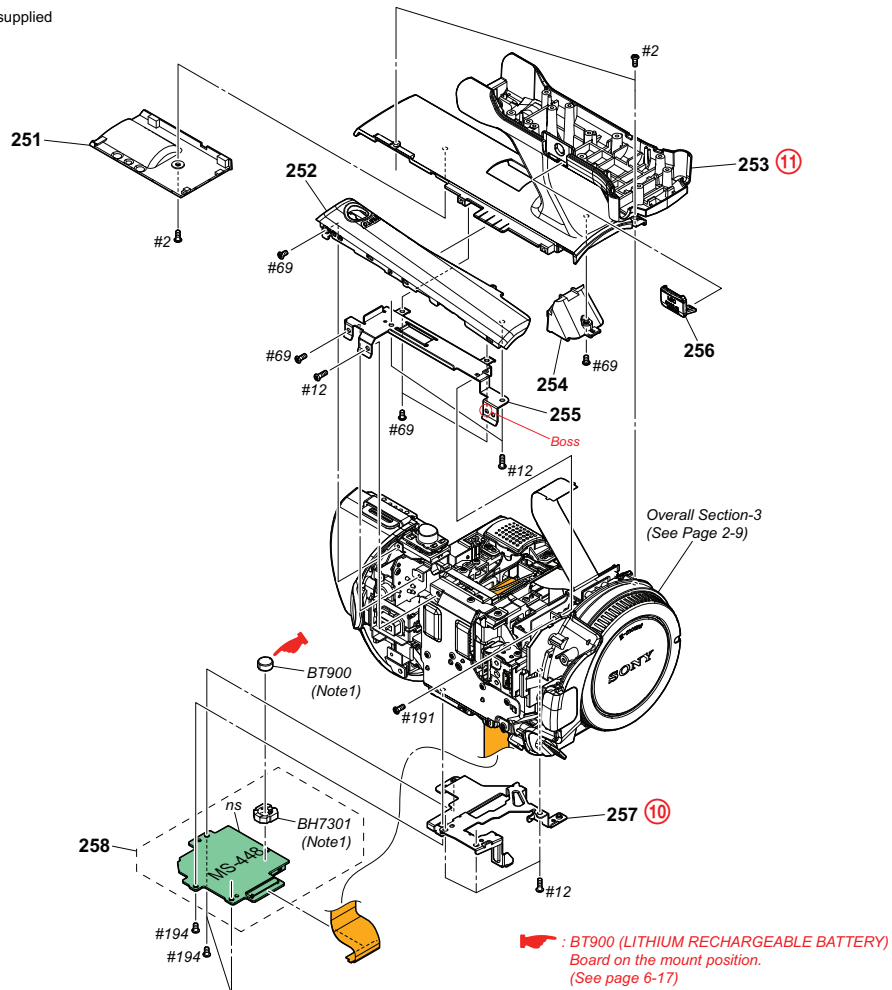
Note1: 組立時は"Assembly-2: Method of attachment of the FP-1273 Flexible Board"を参照してください。

Note2: Refer to "Assembly-3: Note on attachment of the Magnet (ND5X3.5X2.4-B)" when you assemble.

Note2: 組立時は"Assembly-3: Note on attachment of the Magnet (ND5X3.5X2.4-B)"を参照してください。

2-1-6. HANDLE BLOCK SECTION

ns: not supplied



Caution:
Danger of explosion if battery is incorrectly replaced.
Replace only with the same or equivalent type.
Dispose of used batteries according to the instructions.

Caution:
電池の交換は、正しく行わないと破裂する恐れがあります。
電池を交換する場合には必ず同じ型名の電池又は同等品と交換してください。
使用済み電池は、取扱指示に従って処分してください。

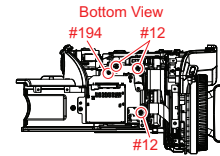
Ref. No.	Part No.	Description
251	4-257-732-01	PANEL, BT UPPER
252	4-257-671-01	CABINET, GRIP (UPPER)
253	4-257-669-01	HANDLE
* 254	4-257-670-01	GUARD (H), FLEXIBLE
* 255	4-257-672-01	FRAME, GRIP
* 256	4-257-736-01	COVER, MIC
257	4-257-720-01	FRAME, MS
258	A-1792-808-A	MS-448 BOARD, COMPLETE

Ref. No.	Part No.	Description
△ BH7301	1-756-615-61	HOLDER, BATTERY (Note1)
△ BT900	1-756-135-31	BATTERY LITHIUM SECONDARY (Note1)
#2	2-635-562-31	SCREW (M1.7)
#12	3-080-204-21	SCREW, TAPPING, P2
#69	2-599-475-21	SCREW (M1.7)
#191	4-188-735-01	SCREW (M1.7)
#194	2-660-401-21	SCREW (M1.7), NEW TRU-STAR, P2

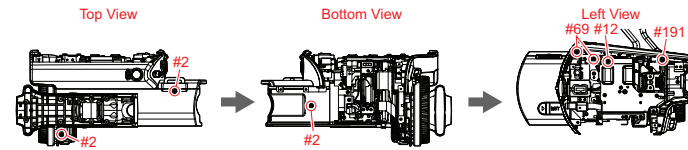
DISASSEMBLY

1. Remove to numerical order (10 to 11) in the left figure.

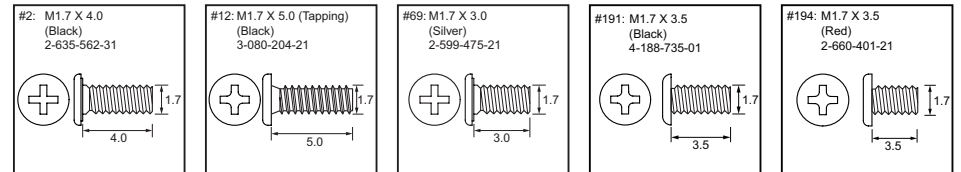
10 #194 X 1 → #12 X 3



11 #2 X 3 → #12 X 1 → #69 X 2 → #191 X 1



Screw

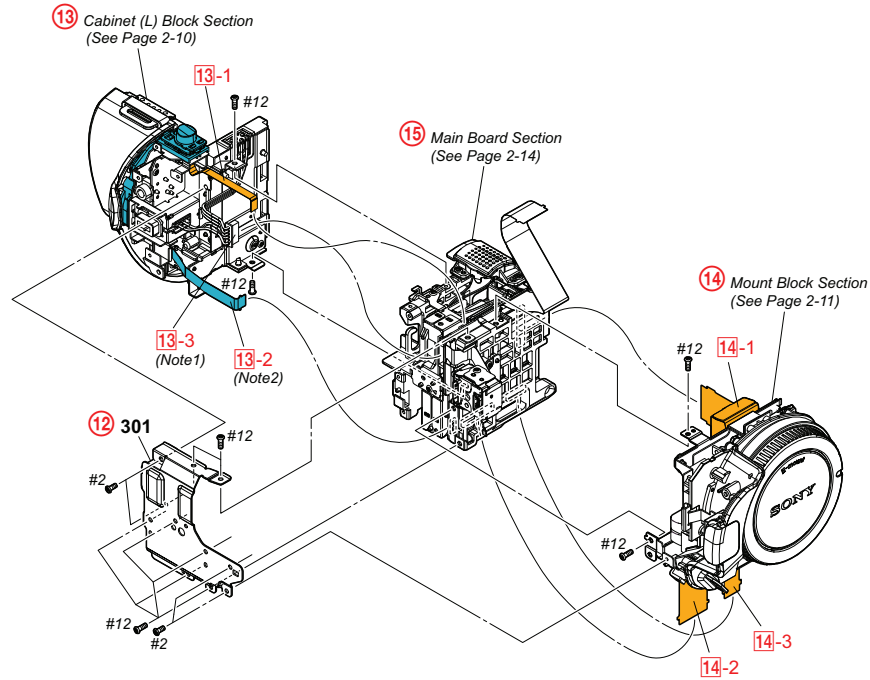


Note

Note1: Replace the battery holder (BH7301) together when replacing the lithium battery (BT900) on the MS-448 board. (The battery holder removed once cannot be used again.) When mounting these parts, mount new battery holder first and attach new lithium battery next.

Note1: MS-448基板のリチウム電池(BT900)を交換する場合はバッテリーホルダ(BH7301)も同時に新品に交換してください。(一度使用したバッテリーホルダは再使用できません。)部品取り付けの際は、先にバッテリーホルダを取り付けてからリチウム電池を装着してください。

2-1-7. OVERALL SECTION-3



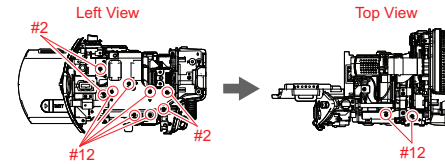
Ref. No.	Part No.	Description
* 301	4-257-710-01	HEAT SINK, MAIN

Ref. No.	Part No.	Description
#2	2-635-562-31	SCREW (M1.7)
#12	3-080-204-21	SCREW, TAPPING, P2

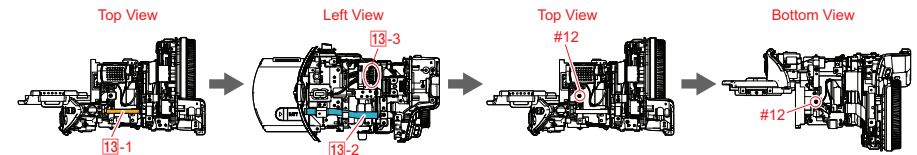
DISASSEMBLY

1. Remove to numerical order (12 to 15) in the left figure.

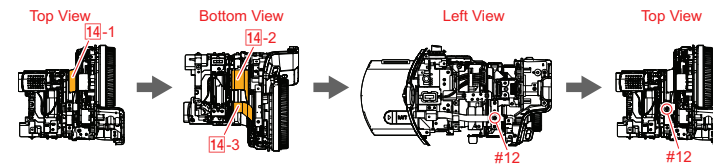
12 #12 X 7 → #2 X 4



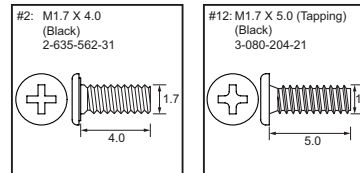
13 Disconnect the FFC-233 Flexible Board (13-1) → Disconnect the flexible cable of the PS36000 Control Switch Block (13-2) → Disconnect the connector of the DC Jack (13-3) → #12 X 2



14 Disconnect the FP-1274 Flexible Board (14-1) → Disconnect the FP-1269 Flexible Board (14-2) → Disconnect the FP-1268 Flexible Board (14-3) → #12 X 2



Screw



Note

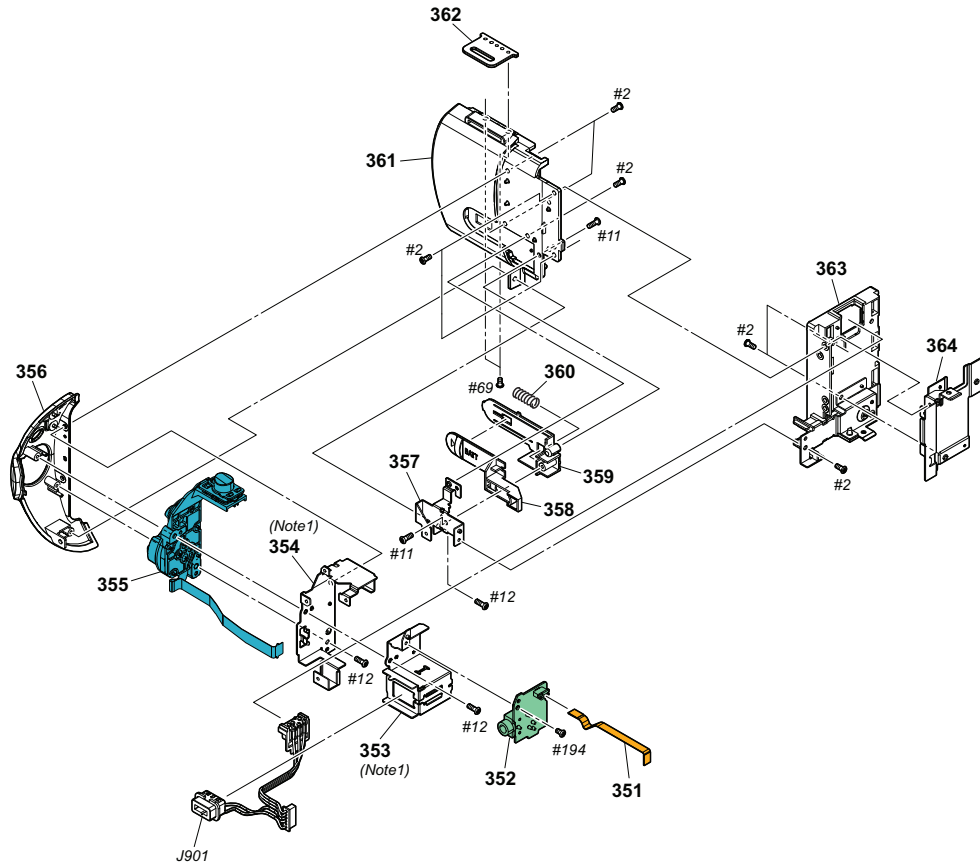
Note1: Refer to "Assembly-1: Routing the connector of the DC Jack" when you assemble.

Note1: 組立時は"Assembly-1: Routing the connector of the DC Jack"を参照してください。

Note2: Refer to "Assembly-4: Routing the flexible cable of the PS36000 Control Switch Block" when you assemble.

Note2: 組立時は"Assembly-4: Routing the flexible cable of the PS36000 Control Switch Block"を参照してください。

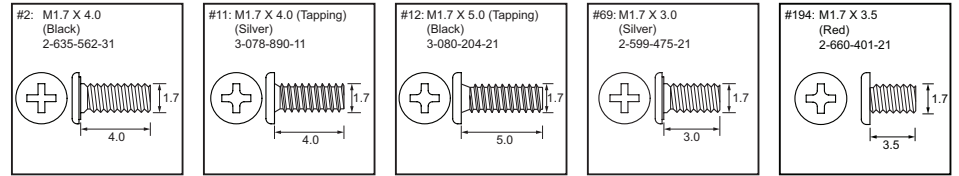
2-1-8. CABINET (L) BLOCK SECTION



Ref. No.	Part No.	Description
351	1-838-068-11	CABLE, FLEXIBLE FLAT (FFC-233)
352	A-1792-802-A	HP-157 BOARD, COMPLETE
353	4-257-731-01	FRAME, HP (Note1)
* 354	4-257-579-01	FRAME, PS (Note1)
355	1-489-062-11	SWITCH BLOCK, CONTROL (PS36000)
356	X-2549-595-1	CABINET (PS) ASSY
* 357	4-257-577-01	RETAINER, BT RELEASE
358	4-257-575-01	BUTTON, BT RELEASE
* 359	4-257-576-01	BASE, BT RELEASE
* 360	4-257-578-01	SPRING, BT RELEASE
361	X-2549-594-1	CABINET (L) ASSY

Ref. No.	Part No.	Description
* 362	4-257-580-01	SHEET METAL, S BELT
363	X-2549-593-1	PANEL ASSY, BT
* 364	4-257-581-01	FRAME, BT
△ J901	1-842-298-11	DC, JACK
#2	2-635-562-31	SCREW (M1.7)
#11	3-078-890-11	SCREW, TAPPING
#12	3-080-204-21	SCREW, TAPPING, P2
#69	2-599-475-21	SCREW (M1.7)
#194	2-660-401-21	SCREW (M1.7), NEW TRU-STAR, P2

Screw

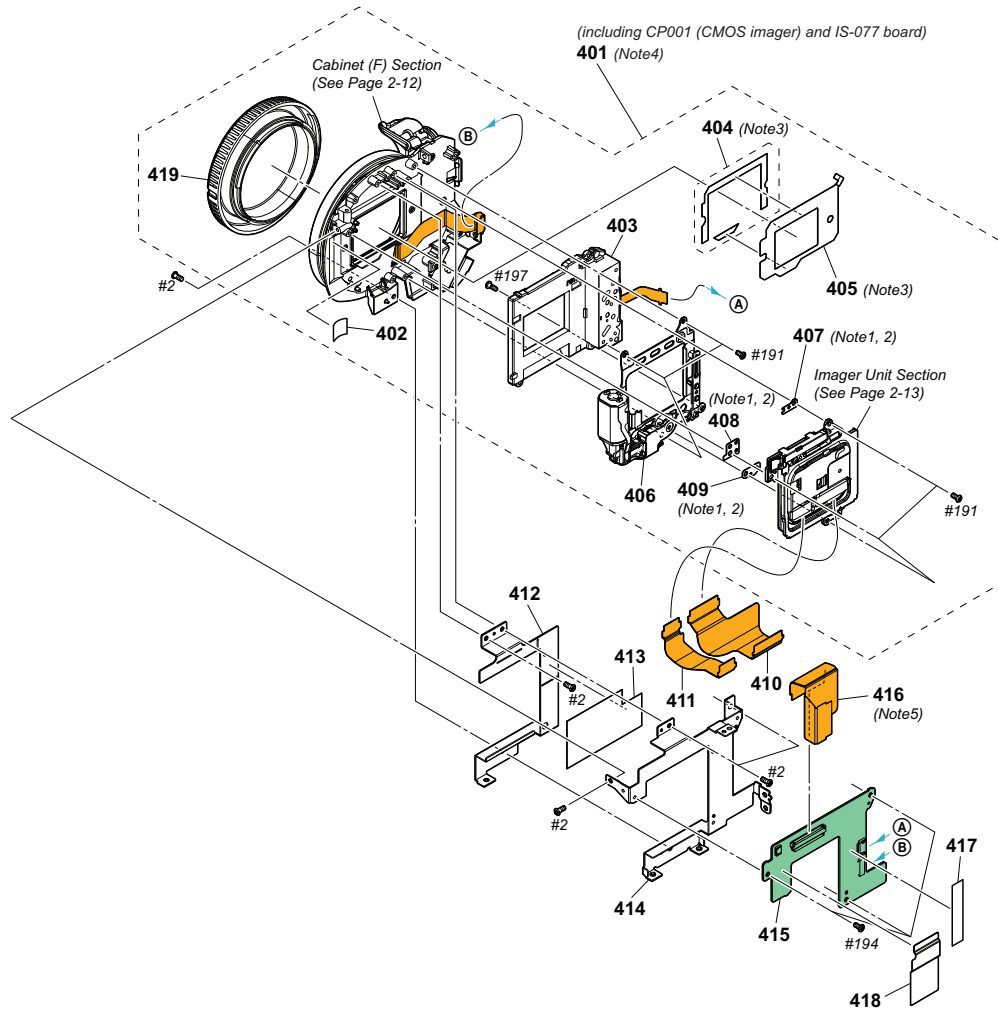


Note

Note1: Refer to "Assembly-5: Method of attachment of the PS Frame and the HP Frame" when you assemble.

Note1: 組立時は"Assembly-5: Method of attachment of the PS Frame and the HP Frame"を参照してください。

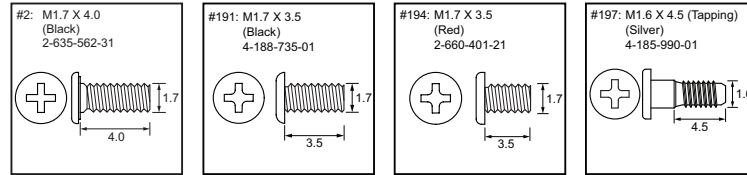
2-1-9. MOUNT BLOCK SECTION



Ref. No.	Part No.	Description
401	A-1797-882-A	SERVICE, MOUNT BLOCK ASSY (Note4)
* 402	4-260-738-01	TAPE AS (075)
403	1-487-960-11	SHUTTER UNIT (AFE-3032)
404	4-185-968-02	MB TAPE, MASK SHEET (Note3)
405	4-185-966-01	MB SHEET, MASK (Note3)
406	A-1773-803-A	MB CHARGE UNIT
* 407	Selection Parts	IM WASHER(A), ADJUST (Note1, 2)
* 408	Selection Parts	IM WASHER(B), ADJUST (Note1, 2)
* 409	Selection Parts	IM WASHER(C), ADJUST (Note1, 2)
410	1-882-103-11	FP-1269 FLEXIBLE BOARD
411	1-882-102-11	FP-1268 FLEXIBLE BOARD

Ref. No.	Part No.	Description
* 412	4-257-704-01	HEAT SINK (MT)
413	4-257-705-01	SHEET (MT), RADIATION
* 414	4-257-703-01	FRAME, MT
415	A-1792-801-A	MT-071 BOARD, COMPLETE
416	1-882-108-11	FP-1274 FLEXIBLE BOARD (Note5)
417	3-079-115-01	TAPE AS
418	4-257-741-01	GUARD SHEET, HINGE FPC
419	4-188-536-01	CAP, BODY
#2	2-635-562-31	SCREW (M1.7)
#191	4-188-735-01	SCREW (M1.7)
#194	2-660-401-21	SCREW (M1.7), NEW TRU-STAR, P2
#197	4-185-990-01	MB SCREW, CHARGE UNIT FIXED

Screw



Note

Note1: The IM adjust washers (A, B, C) differ in shape and thickness. Make sure to return the removed IM adjust washers to original places. When replacing IM adjust washers, refer to "2-2. SELECTION PARTS" on page 2-15.

Note2: Refer to "Assembly-6: Putting position of the IM Adjust Washer (A, B, C)" when you assemble.

Note3: Refer to "Assembly-7: Method of attachment of the MB Mask Sheet" when you assemble.

Note4:
Precautions for Replacement of the Mount Block Assy Service
As Mount Block Assy Service may be damaged by static electricity from its structure, handle it carefully like for the MOS IC. In addition, ensure that the receiver is not covered with dusts nor exposed to strong light.

Note5: Refer to "Assembly-8: Method for connection of the FP-1274 Flexible Board" when you assemble.

Note1: IM調整ワッシャ (A, B, C)は、それぞれ形状・厚さが異なります。取り外したIM調整ワッシャは、必ず元の位置に戻してください。また、IM調整ワッシャを交換する際は、2-15ページの"2-2. SELECTION PARTS"を参照してください。

Note2: 組立時は"Assembly-6: Putting position of the IM Adjust Washer (A, B, C)"を参照してください。

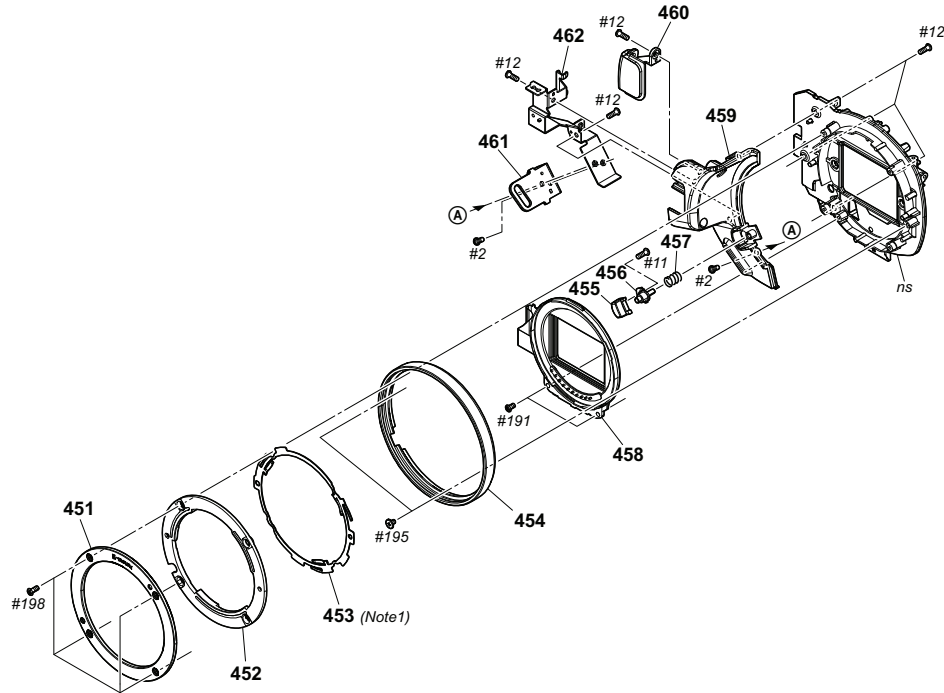
Note3: 組立時は"Assembly-7: Method of attachment of the MB Mask Sheet"を参照してください。

Note4:
マウントブロックAssy サービス交換時の注意
マウントブロックAssy サービスは構造上、静電気により破壊される恐れがあるため、MOS ICと同様に注意して取り扱ってください。また、受光部にはゴミの付着、および強い光がはいることのないように注意してください。

Note5: 組立時は"Assembly-8: Method for connection of the FP-1274 Flexible Board"を参照してください。

2-1-10. CABINET (F) SECTION

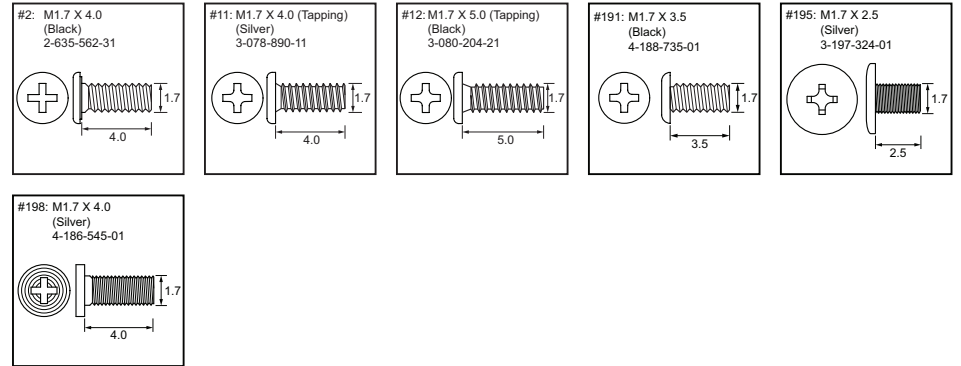
ns: not supplied



Ref. No.	Part No.	Description
	451	4-185-964-03 MB N PLATE (A)
*	452	4-185-962-01 MB N PLATE (B)
*	453	4-185-963-01 MB N PLATE SP (Note1)
	454	4-257-702-01 RING, MOUNT
	455	4-257-689-01 BUTTON, L LOCK
*	456	X-2547-937-1 PIN ASSY, L LOCK
	457	4-257-700-01 SPRING, LOCK (L)
	458	A-1773-802-A MB CONTACT UNIT, N
	459	4-257-706-01 CABINET (F)
	460	4-257-707-01 WINDOW, CABINET (F)

Ref. No.	Part No.	Description
*	461	4-257-709-01 BRACKET (FRONT), BELT
*	462	4-257-708-01 FRAME, F
#2	2-635-562-31	SCREW (M1.7)
#11	3-078-890-11	SCREW, TAPPING
#12	3-080-204-21	SCREW, TAPPING, P2
#191	4-188-735-01	SCREW (M1.7)
#195	3-197-324-01	M1.7X2.5X3GF (D4X0.5)
#198	4-186-545-01	M1.7X4 SPIN

Screw



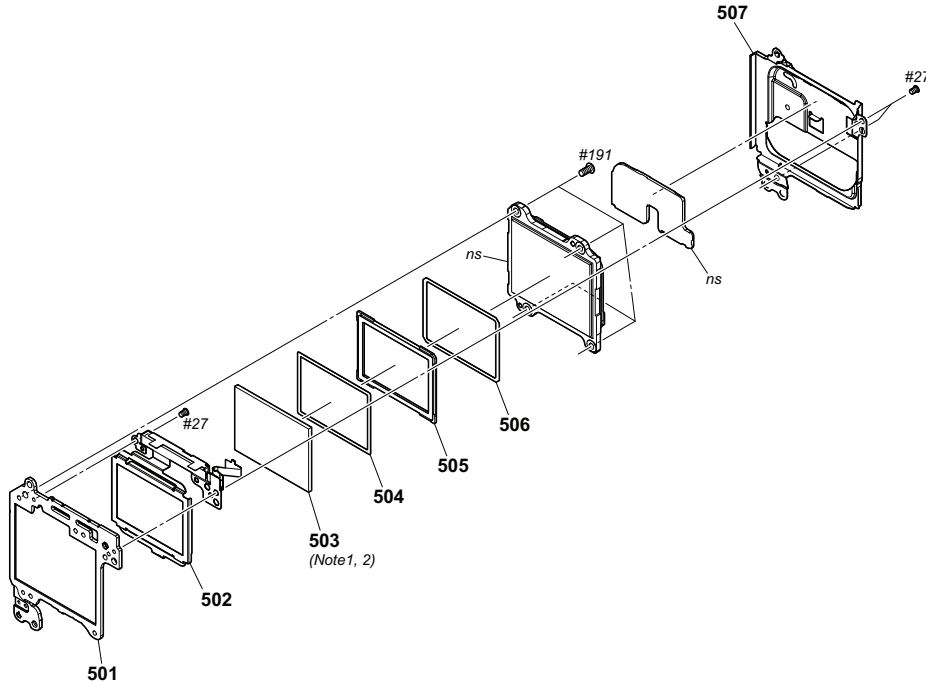
Note

Note1: Refer to "Assembly-9: Apply grease on the MB N Plate SP" when you assemble.

Note1: 組立時は"Assembly-9: Apply grease on the MB N Plate SP"を参照してください。

2-1-11. IMAGER UNIT SECTION

ns: not supplied



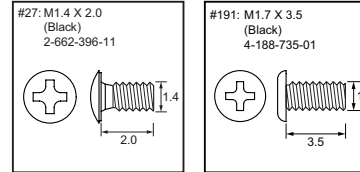
Note2: Refer to "3-2. CLEANING PROCEDURE OF OLPF" on page 3-2 for method of cleaning the OLPF.

Ref. No.	Part No.	Description
* 501	4-185-996-01	IM PLATE, IMAGER
502	A-1773-805-A	IM PLATE UNIT, LOWPASS RETAINER
503	1-856-102-11	OPTICAL FILTER BLOCK (OFB-01-09) (Note1, 2)
504	4-193-875-01	CUTTER, IM FLARE (S)
505	4-185-993-01	IM SHEET, SPACER

Note2: OLPFの清掃方法は3-2ページの"3-2. CLEANING PROCEDURE OF OLPF"を参照してください。

Ref. No.	Part No.	Description
506	4-194-127-01	M TAPE, SPACER FIXED (S)
* 507	4-186-455-01	HEAT SINK
#27	2-662-396-11	SCREW (M1.4), NEW, TRUSTAR, P2
#191	4-188-735-01	SCREW (M1.7)

Screw

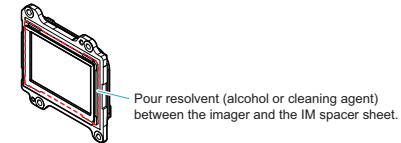


Note

Note1: Refer to the following statements when replacing the Optical filter block.

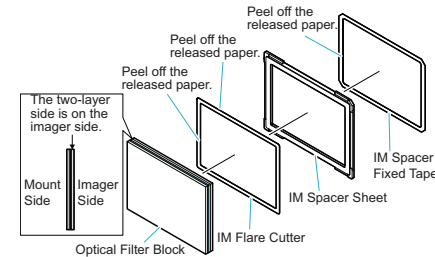
Method of Removal

- (1) Pour resolvent (alcohol or cleaning agent) between the imager and the IM spacer sheet.
* Wait for that the adhesive power of the IM spacer fixed tape weakens.
- (2) Remove the IM spacer sheet from the imager.

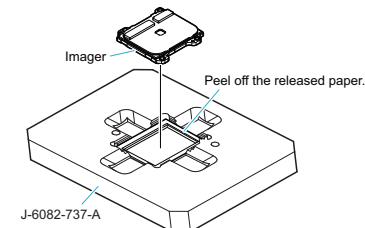


Method of Attachment

- (1) Attach the IM flare cutter and the Optical filter block by aligning them with the outer shape of the IM spacer sheet evenly.
* The two-layer side of the Optical filter block is on the imager side.
- (2) Attach the IM spacer fixed tape by aligning it with the outer shape of the IM spacer sheet evenly.



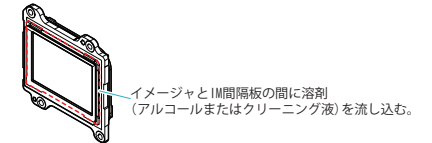
- (3) Set the Optical filter block in its attachment jig (J-6082-737-A), with the attached IM spacer fixed tape facing upward.
- (4) Press the imager down into the jig as shown below to attach it to the Optical filter block.



Note1: 光学フィルタブロックを交換する際は、下記を参照してください。

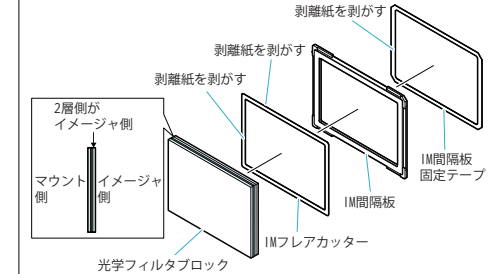
取り外し方

- (1) イメージャとIM間隔板の間に溶剤(アルコールまたはクリーニング液)を流し込む。
* IM間隔板固定テープの粘着力が弱くなるのを待ってください。
- (2) イメージャからIM間隔板を取り外す。

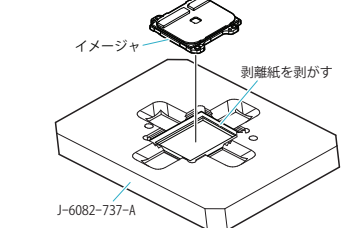


取り付け方

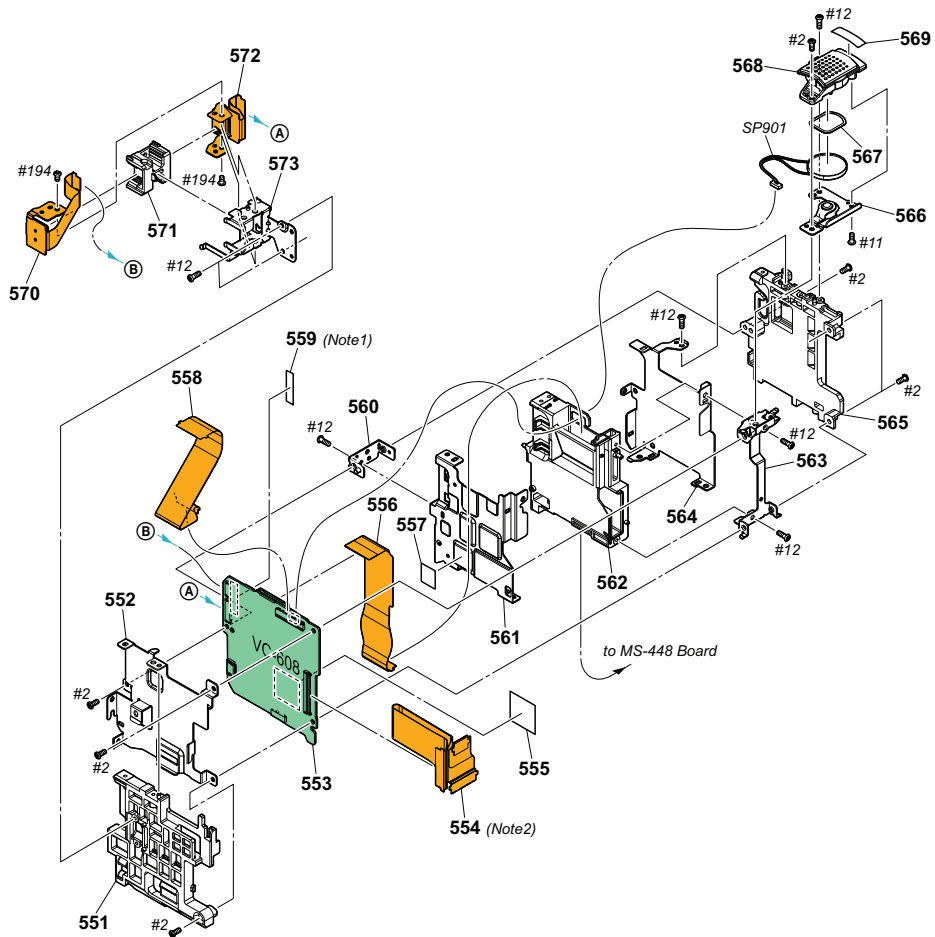
- (1) IM間隔板に対し、上下左右が均一になるようにIMフレアカッターおよび光学フィルタブロックを貼り付ける。
* 光学フィルタブロックは2層側がイメージャ側になります。
- (2) IM間隔板に対し、上下左右が均一になるようにIM間隔板固定テープを貼り付ける。



- (3) 貼り付けたIM間隔板固定テープが上になるように、光学フィルタブロック貼付け治具(J-6082-737-A)にセットする。
- (4) イメージャを図のように治具に押し付け、光学フィルタブロックに貼り付ける。



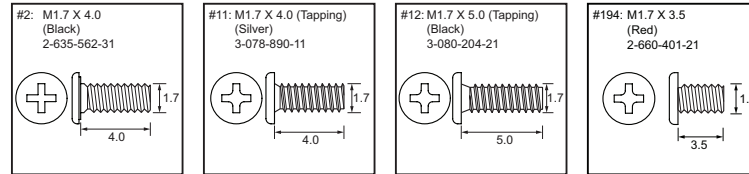
2-1-12. MAIN BOARD SECTION



Ref. No.	Part No.	Description
* 551	4-257-721-01	PANEL (VC FRONT), GUARD
* 552	4-257-716-01	HEAT SINK (FRONT), VC
553	A-1792-867-A	VC-608 BOARD, COMPLETE (SERVICE)
554	1-882-104-11	FP-1270 FLEXIBLE BOARD (Note2)
555	4-257-719-01	SHEET (VC), SHIELD
556	1-882-915-11	FP-1331 FLEXIBLE BOARD
* 557	4-260-916-01	SHEET (VC), RADIATION
558	1-882-101-11	FP-1267 FLEXIBLE BOARD
559	4-199-573-01	LABEL, FUSE REPLACEMENT CAUTION (Note1)
* 560	4-257-725-01	FRAME (L), VC
* 561	4-257-717-01	HEAT SINK (REAR), VC
* 562	4-257-722-01	PANEL (VC REAR), GUARD
* 563	4-257-724-01	FRAME (R), VC
* 564	4-257-718-01	HEAT SINK (FRONT), DD
* 565	4-257-723-01	PANEL (DD), GUARD

Ref. No.	Part No.	Description
* 566	4-257-729-01	RETAINER, SPEAKER
567	4-257-730-01	SHEET, SPEAKER PROTECTION
568	4-257-728-01	HOLDER, SPEAKER
569	4-259-815-01	CUSHION, SPEAKER
570	A-1792-805-A	FP-1276 FLEXIBLE BOARD, COMPLETE
571	4-257-727-01	HOLDER, HM
572	A-1792-806-A	FP-1277 FLEXIBLE BOARD, COMPLETE
573	4-257-726-01	FRAME, HM
SP901	1-858-324-41	SPEAKER (1.6CM)
#2	2-635-562-31	SCREW (M1.7)
#11	3-078-890-11	SCREW, TAPPING
#12	3-080-204-21	SCREW, TAPPING, P2
#194	2-660-401-21	SCREW (M1.7), NEW TRU-STAR, P2

Screw



Note

Note1: Refer to "Assembly-11: Putting position of Fuse Replacement Caution Label" when you assemble.

Note1: 組立時は "Assembly-11: Putting position of Fuse Replacement Caution Label" を参照してください。

Note2: Refer to "Assembly-10: Method of routing the FP-1270 Flexible Board" when you assemble.

Note2: 組立時は "Assembly-10: Method of routing the FP-1270 Flexible Board" を参照してください。

• EXCEPT J MODEL

Checking supplied accessories.

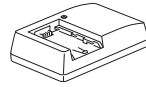
Note: This item is supplied with the unit as an accessory, but is not prepared as a service part.



AC Adaptor (AC-PW10AM)
△ 1-487-153-31 (EXCEPT US, CND)
△ 1-487-153-23 (US, CND)



Rechargeable battery pack (NP-FV70)
(Note)



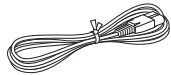
Battery charger (BC-VH1)
△ 1-487-152-21 (US, CND)
△ 1-487-152-33 (EXCEPT US, CND)



Conversion (2P) Adaptor
△ 1-569-007-12 (E: NTSC, JE)



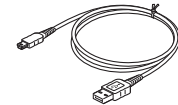
Body cap
4-188-536-01



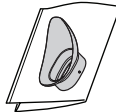
Power cord (mains lead)
△ 1-832-121-31 (CH)
△ 1-834-482-21 (AEP, E: PAL)
△ 1-834-484-31 (US, CND)
△ 1-834-852-11 (E: NTSC)
△ 1-836-251-11 (JE)



Wind Screen
4-257-657-01



USB cable
△ 1-835-993-31



Large eyecup
X-2342-702-1



Battery cover (EXCEPT US, CND)
X-2560-563-1



Instruction Manual
(Only for destination Japanese model)
日本語、英語、韓国語、中国語のみ部品供給可能です。
* 4-258-761-11 (ENGLISH, FRENCH, SPANISH)
* 4-258-761-31 (TRADITIONAL CHINESE, KOREAN)
* 4-258-762-11 (ENGLISH)
* 4-258-762-21 (FRENCH, GERMAN, DUTCH, ITALIAN, SPANISH, PORTUGUESE)
* 4-258-762-31 (GREEK, POLISH, CZECH, SLOVAK, ROMANIAN)
* 4-258-762-41 (RUSSIAN, UKRAINIAN)
* 4-258-762-51 (SIMPLIFIED CHINESE) (E: PAL, JE)
* 4-258-762-61 (ARABIC, PERSIAN)
* 4-258-764-11 (SIMPLIFIED CHINESE) (CH)



Handycam Handbook
4-258-765-11 (SIMPLIFIED CHINESE) (CH)



CD-ROM "Handycam Application Software"
- "PMB" (software) including "PMB Guide"
- "Handycam Handbook" (PDF)
4-258-877-01



Handycam Handbook (PDF)

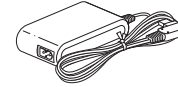
- * 4-257-862-01 (JAPANESE)
- * 4-257-862-11 (ENGLISH)
- * 4-257-862-21 (FRENCH)
- * 4-257-862-31 (GERMAN)
- * 4-257-862-41 (ITALIAN)
- * 4-257-862-51 (DUTCH)
- * 4-257-862-61 (SPANISH)
- * 4-257-862-71 (PORTUGUESE)
- * 4-257-862-81 (GREEK)
- * 4-257-862-91 (CZECH)
- * 4-258-742-11 (SLOVAK)
- * 4-258-742-21 (POLISH)
- * 4-258-742-31 (ROMANIAN)
- * 4-258-742-41 (RUSSIAN)
- * 4-258-742-51 (UKRAINIAN)
- * 4-258-742-61 (SIMPLIFIED CHINESE)
- * 4-258-742-71 (ARABIC)
- * 4-258-742-81 (PERSIAN)
- * 4-258-742-91 (THAI)
- * 4-258-760-11 (TRADITIONAL CHINESE)
- * 4-258-760-21 (KOREAN)

The CD-ROM supplied contains all of language version of the Handycam Handbook (PDF) for printing.
•The printed matter is not supplied. If required, please order it with the part number below.
*(Only for destination Japanese model)
日本国内については印刷での部品供給は行っていません。

• J MODEL

付属品.

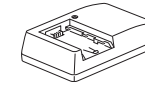
Note1: 当商品はアクセサリとして同梱されておりますがサービス用補修部品としては準備していません。



ACアダプター (AC-PW10AM)
△ 1-487-153-31



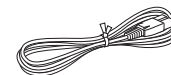
ボディキャップ
4-188-536-01



バッテリーチャージャー (BC-VH1)
△ 1-487-152-11



リチャージャブルバッテリーパック (NP-FV70)
(Note1)



電源コード
△ 1-836-251-11



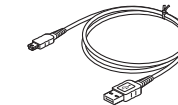
ウインドスクリーン
4-257-657-01



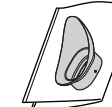
"ハンディカム" ハンドブック
4-258-765-01 (日本語)



取扱説明書
4-258-761-01 (日本語)



USBケーブル
△ 1-835-993-31



大型アイカップ
X-2342-702-1



CD-ROM 「Handycam Application Software」
- 「PMB」(ソフトウェア、
「PMBガイド」を含む)
- 「ハンディカムハンドブック」
(PDF) (Note 2)
4-258-877-01



バッテリーカバー
X-2560-563-1

Note 2: 日本国内については印刷での部品供給は行っていません。

2-2. SELECTION PARTS

Ref. No.407

Select the optimum thickness of washer.

Part No.	Description
4-185-995-01	IM WASHER (A), ADJUST (t = 0.05)
4-185-995-11	IM WASHER (A), ADJUST (t = 0.1)
4-185-995-21	IM WASHER (A), ADJUST (t = 0.15)
4-185-995-31	IM WASHER (A), ADJUST (t = 0.2)
4-185-995-41	IM WASHER (A), ADJUST (t = 0.25)
4-185-995-51	IM WASHER (A), ADJUST (t = 0.3)
4-185-995-61	IM WASHER (A), ADJUST (t = 0.35)
4-185-995-71	IM WASHER (A), ADJUST (t = 0.4)
4-185-995-81	IM WASHER (A), ADJUST (t = 0.45)
4-185-995-91	IM WASHER (A), ADJUST (t = 0.495)

Ref. No.408

Select the optimum thickness of washer.

Part No.	Description
4-185-998-01	IM WASHER (B), ADJUST (t = 0.05)
4-185-998-11	IM WASHER (B), ADJUST (t = 0.1)
4-185-998-21	IM WASHER (B), ADJUST (t = 0.15)
4-185-998-31	IM WASHER (B), ADJUST (t = 0.2)
4-185-998-41	IM WASHER (B), ADJUST (t = 0.25)
4-185-998-51	IM WASHER (B), ADJUST (t = 0.3)
4-185-998-61	IM WASHER (B), ADJUST (t = 0.35)
4-185-998-71	IM WASHER (B), ADJUST (t = 0.4)
4-185-998-81	IM WASHER (B), ADJUST (t = 0.45)
4-185-998-91	IM WASHER (B), ADJUST (t = 0.495)

Ref. No.409

Select the optimum thickness of washer.

Part No.	Description
4-185-999-01	IM WASHER (C), ADJUST (t = 0.05)
4-185-999-11	IM WASHER (C), ADJUST (t = 0.1)
4-185-999-21	IM WASHER (C), ADJUST (t = 0.15)
4-185-999-31	IM WASHER (C), ADJUST (t = 0.2)
4-185-999-41	IM WASHER (C), ADJUST (t = 0.25)
4-185-999-51	IM WASHER (C), ADJUST (t = 0.3)
4-185-999-61	IM WASHER (C), ADJUST (t = 0.35)
4-185-999-71	IM WASHER (C), ADJUST (t = 0.4)
4-185-999-81	IM WASHER (C), ADJUST (t = 0.45)
4-185-999-91	IM WASHER (C), ADJUST (t = 0.495)

Ref. No.	Part No.	Description			
R8245	1-208-912-11	METAL CHIP	11K	0.5%	1/16W
R8246	1-208-912-11	METAL CHIP	11K	0.5%	1/16W
R8247	1-208-709-11	METAL CHIP	12K	0.5%	1/16W
R8248	1-208-709-11	METAL CHIP	12K	0.5%	1/16W
R8249	1-208-911-11	METAL CHIP	10K	0.5%	1/16W
R8250	1-208-912-11	METAL CHIP	11K	0.5%	1/16W
R8251	1-208-709-11	METAL CHIP	12K	0.5%	1/16W
R8260	1-218-864-11	METAL CHIP	5.1K	0.5%	1/10W
R8261	1-208-695-11	METAL CHIP	3.3K	0.5%	1/16W
R8262	1-218-873-11	METAL CHIP	12K	0.5%	1/10W
R8267	1-218-973-11	METAL CHIP	47K	5%	1/16W
R8268	1-218-973-11	METAL CHIP	47K	5%	1/16W
R8269	1-218-871-11	METAL CHIP	10K	0.5%	1/10W
R8270	1-218-871-11	METAL CHIP	10K	0.5%	1/10W
R8272	1-218-873-11	METAL CHIP	12K	0.5%	1/10W
R8273	1-208-695-11	METAL CHIP	3.3K	0.5%	1/16W
R8274	1-218-864-11	METAL CHIP	5.1K	0.5%	1/10W
R8282	1-208-927-11	METAL CHIP	47K	0.5%	1/16W
R8283	1-208-927-11	METAL CHIP	47K	0.5%	1/16W
R8284	1-208-698-11	METAL CHIP	4.3K	0.5%	1/16W
R8285	1-208-698-11	METAL CHIP	4.3K	0.5%	1/16W
A-1792-808-A MS-448 BOARD, COMPLETE					

(BT900 (lithium battery) is not included in MS-448 board.)					
< BATTERY HOLDER >					
△ BH7301	1-756-615-61	HOLDER, BATTERY (Note)			
< BATTERY >					
△ BT900	1-756-135-31	BATTERY LITHIUM SECONDARY (Note) (Caution)			
< CONNECTOR >					
* CN7301	1-821-500-11	CONNECTOR, FPC (ZIF) 45P			
CN7302	1-822-837-21	CARD CONNECTOR			
< DIODE >					
D7301	6-501-216-01	DIODE CL-271HR-C-TS			
< FERRITE BEAD >					
* FB7301	1-481-250-11	INDUCTOR, FERRITE BEAD (1005)			
* FB7302	1-481-250-11	INDUCTOR, FERRITE BEAD (1005)			
* FB7303	1-481-250-11	INDUCTOR, FERRITE BEAD (1005)			
* FB7304	1-481-250-11	INDUCTOR, FERRITE BEAD (1005)			
* FB7305	1-481-250-11	INDUCTOR, FERRITE BEAD (1005)			
* FB7306	1-481-250-11	INDUCTOR, FERRITE BEAD (1005)			
* FB7307	1-481-250-11	INDUCTOR, FERRITE BEAD (1005)			
* FB7308	1-481-250-11	INDUCTOR, FERRITE BEAD (1005)			
* FB7309	1-481-250-11	INDUCTOR, FERRITE BEAD (1005)			
* FB7310	1-481-250-11	INDUCTOR, FERRITE BEAD (1005)			
* FB7311	1-481-250-11	INDUCTOR, FERRITE BEAD (1005)			
* FB7312	1-481-250-11	INDUCTOR, FERRITE BEAD (1005)			
< RESISTOR >					
R7301	1-218-940-11	METAL CHIP	82	5%	1/16W
R7302	1-218-939-11	METAL CHIP	68	5%	1/16W
R7303	1-218-940-11	METAL CHIP	82	5%	1/16W
R7304	1-218-939-11	METAL CHIP	68	5%	1/16W
R7305	1-218-939-11	METAL CHIP	68	5%	1/16W

Ref. No.	Part No.	Description			
R7306	1-218-939-11	METAL CHIP	68	5%	1/16W
R7307	1-218-939-11	METAL CHIP	68	5%	1/16W
R7308	1-218-939-11	METAL CHIP	68	5%	1/16W
R7309	1-218-939-11	METAL CHIP	68	5%	1/16W
R7310	1-218-939-11	METAL CHIP	68	5%	1/16W
R7311	1-218-939-11	METAL CHIP	68	5%	1/16W
R7312	1-218-940-11	METAL CHIP	82	5%	1/16W
R7313	1-218-940-11	METAL CHIP	82	5%	1/16W
R7316	1-218-990-81	SHORT CHIP	0		
R7317	1-218-939-11	METAL CHIP	68	5%	1/16W
R7318	1-218-990-81	SHORT CHIP	0		
R7321	1-218-947-11	METAL CHIP	330	5%	1/16W
A-1792-803-A PD-420 BOARD, COMPLETE					

< CAPACITOR >					
C701	1-112-717-91	CERAMIC CHIP	1uF	10%	6.3V
C702	1-112-300-91	CERAMIC CHIP	4.7uF	10%	10V
C703	1-165-908-11	CERAMIC CHIP	1uF	10%	10V
C704	1-112-021-91	CERAMIC CHIP	2.2uF	20%	16V
C705	1-165-908-11	CERAMIC CHIP	1uF	10%	10V
* C706	1-112-746-11	CERAMIC CHIP	4.7uF	10%	6.3V
C707	1-112-300-91	CERAMIC CHIP	4.7uF	10%	10V
C708	1-112-717-91	CERAMIC CHIP	1uF	10%	6.3V
C709	1-112-717-91	CERAMIC CHIP	1uF	10%	6.3V
* C710	1-112-746-11	CERAMIC CHIP	4.7uF	10%	6.3V
* C711	1-112-746-11	CERAMIC CHIP	4.7uF	10%	6.3V
C712	1-165-908-11	CERAMIC CHIP	1uF	10%	10V
C714	1-100-415-91	CERAMIC CHIP	0.47uF	10%	6.3V
C715	1-112-717-91	CERAMIC CHIP	1uF	10%	6.3V
C717	1-164-866-11	CERAMIC CHIP	47PF	5%	50V
C718	1-164-933-11	CERAMIC CHIP	220PF	10%	50V
< CONNECTOR >					
* CN701	1-821-500-11	CONNECTOR, FPC (ZIF) 45P			
* CN702	1-822-038-81	CONNECTOR, FPC (ZIF) 61P			
< DIODE >					
D701	8-719-069-29	DIODE RB520S-30FJTE61			
< COIL >					
* L701	1-481-102-21	INDUCTOR	10uH		
< RESISTOR >					
R701	1-216-864-11	SHORT CHIP	0		
R702	1-216-864-11	SHORT CHIP	0		
R703	1-218-953-11	METAL CHIP	1K	5%	1/16W
R705	1-208-663-11	METAL CHIP	150	0.5%	1/16W
R706	1-208-663-11	METAL CHIP	150	0.5%	1/16W
R707	1-208-663-11	METAL CHIP	150	0.5%	1/16W
R708	1-208-663-11	METAL CHIP	150	0.5%	1/16W
R709	1-208-663-11	METAL CHIP	150	0.5%	1/16W
R710	1-208-663-11	METAL CHIP	150	0.5%	1/16W
R711	1-208-663-11	METAL CHIP	150	0.5%	1/16W
R712	1-208-663-11	METAL CHIP	150	0.5%	1/16W
R713	1-208-663-11	METAL CHIP	150	0.5%	1/16W
R714	1-208-663-11	METAL CHIP	150	0.5%	1/16W
R715	1-208-663-11	METAL CHIP	150	0.5%	1/16W

Ref. No.	Part No.	Description			
R716	1-208-663-11	METAL CHIP	150	0.5%	1/16W
R717	1-208-663-11	METAL CHIP	150	0.5%	1/16W
R718	1-208-663-11	METAL CHIP	150	0.5%	1/16W
R719	1-208-663-11	METAL CHIP	150	0.5%	1/16W
R720	1-208-663-11	METAL CHIP	150	0.5%	1/16W
R721	1-208-663-11	METAL CHIP	150	0.5%	1/16W
R722	1-208-663-11	METAL CHIP	150	0.5%	1/16W
R723	1-208-663-11	METAL CHIP	150	0.5%	1/16W
R724	1-208-663-11	METAL CHIP	150	0.5%	1/16W
R725	1-208-663-11	METAL CHIP	150	0.5%	1/16W
R726	1-208-663-11	METAL CHIP	150	0.5%	1/16W
R727	1-208-663-11	METAL CHIP	150	0.5%	1/16W
R728	1-208-663-11	METAL CHIP	150	0.5%	1/16W
R729	1-218-990-81	SHORT CHIP	0		
R730	1-218-945-11	METAL CHIP	220	5%	1/16W
R731	1-218-949-11	METAL CHIP	470	5%	1/16W
R732	1-218-990-81	SHORT CHIP	0		

Caution
 Danger of explosion if battery is incorrectly replaced.
 Replace only with the same or equivalent type.
 Dispose of used batteries according to the instructions.

注意
 電池の交換は、正しく行わないと破裂する恐れがあります。
 電池を交換する場合には必ず同じ型名の電池又は同等品と
 交換してください。
 使用済み電池は、取扱指示に従って処分してください。

Note: Replace the battery holder (BH7301) together when replacing the lithium battery (BT900) on the MS-448 board.
 (The battery holder removed once cannot be used again.)
 When mounting these parts, mount new battery holder first and attach new lithium battery next.

Note: MS-448基板のリチウム電池 (BT900) を交換する場合は
 バッテリーホルダ (BH7301) も同時に新品に交換してくだ
 さい。
 (一度使用したバッテリーホルダは再使用できません。)
 部品取り付けの際は、先にバッテリーホルダを取り付け
 からリチウム電池を装着してください。

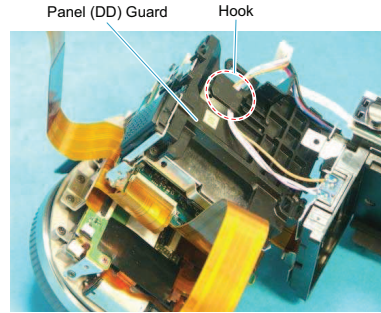
Please refer to LEVEL 3 about the ELECTRICAL PARTS LIST of IS-077, MT-071, VC-608 and VF-180.

IS-077, MT-071, VC-608およびVF-180のELECTRICAL PARTS LIST
 については、LEVEL3を参照してください。

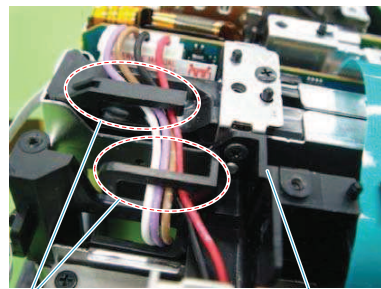
3. ASSEMBLY

Assembly-1: Routing the connector of the DC Jack

1-1. Route the white, pink and yellow harnesses through the hook of the Panel (DD) Guard as shown in figure below.



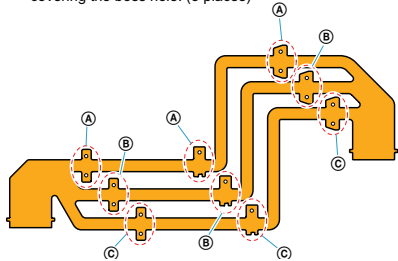
1-2. Route the all harnesses together through the hooks of the Panel (DD) Guard as shown in figure below.



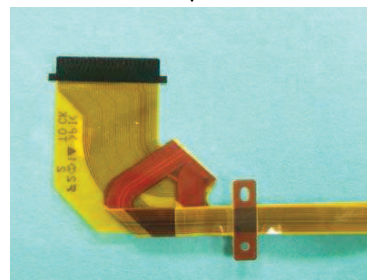
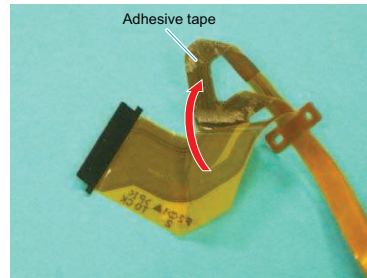
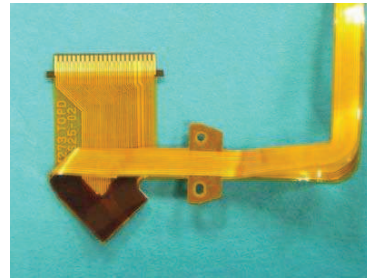
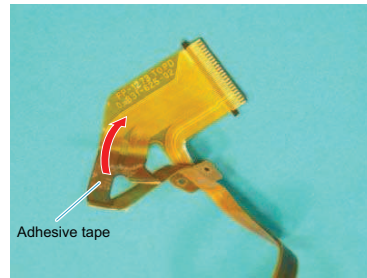
Assembly-2: Method of attachment of the FP-1273 Flexible Board

2-1. Peel off the released paper of double-coated adhesive tape on the B side, and then attach it to the A side without covering the boss hole. (3 places)

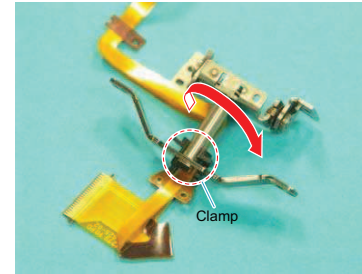
Peel off the released paper of double-coated adhesive tape on the C side, and then attach it to the A side without covering the boss hole. (3 places)



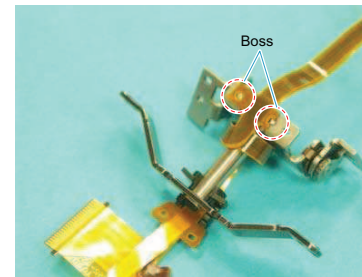
2-2. Peel off the released paper of double-coated adhesive tape, and then fold the FP-1273 Flexible Board in the direction indicated with the arrows in figures below.



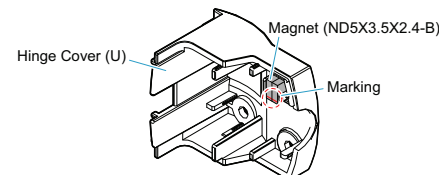
2-3. Clamp the FP-1273 Flexible Board to the Panel Hinge (360) Assy. Wrap the FP-1273 Flexible Board around the Panel Hinge (360) Assy by rotating it one and a half circle in the direction indicated with the arrow in figure below.



2-4. Fix the FP-1273 Flexible Board to the Panel Hinge (360) Assy by matching the boss hole with the boss as shown in figure below.



Assembly-3: Note on attachment of the Magnet (ND5X3.5X2.4-B)

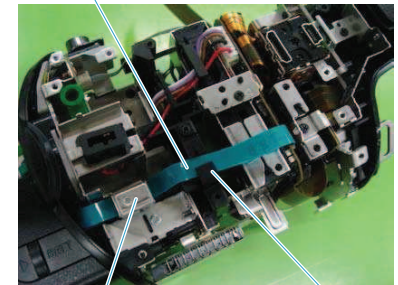


Note: Put the marking side in the position as shown in figure when you install the magnet.

Assembly-4: Routing the flexible cable of the PS36000 Control Switch Block

Route the flexible cable of the PS36000 Control Switch Block through the PS Frame and the Panel (DD) Guard as shown in figure below.

Flexible cable of the PS36000 Control Switch Block



Assembly-5: Method of attachment of the PS Frame and the HP Frame

Push the PS Frame and the HP Frame to the Cabinet (PS) Assy side in the direction indicated with the arrow, then tighten two screws.

