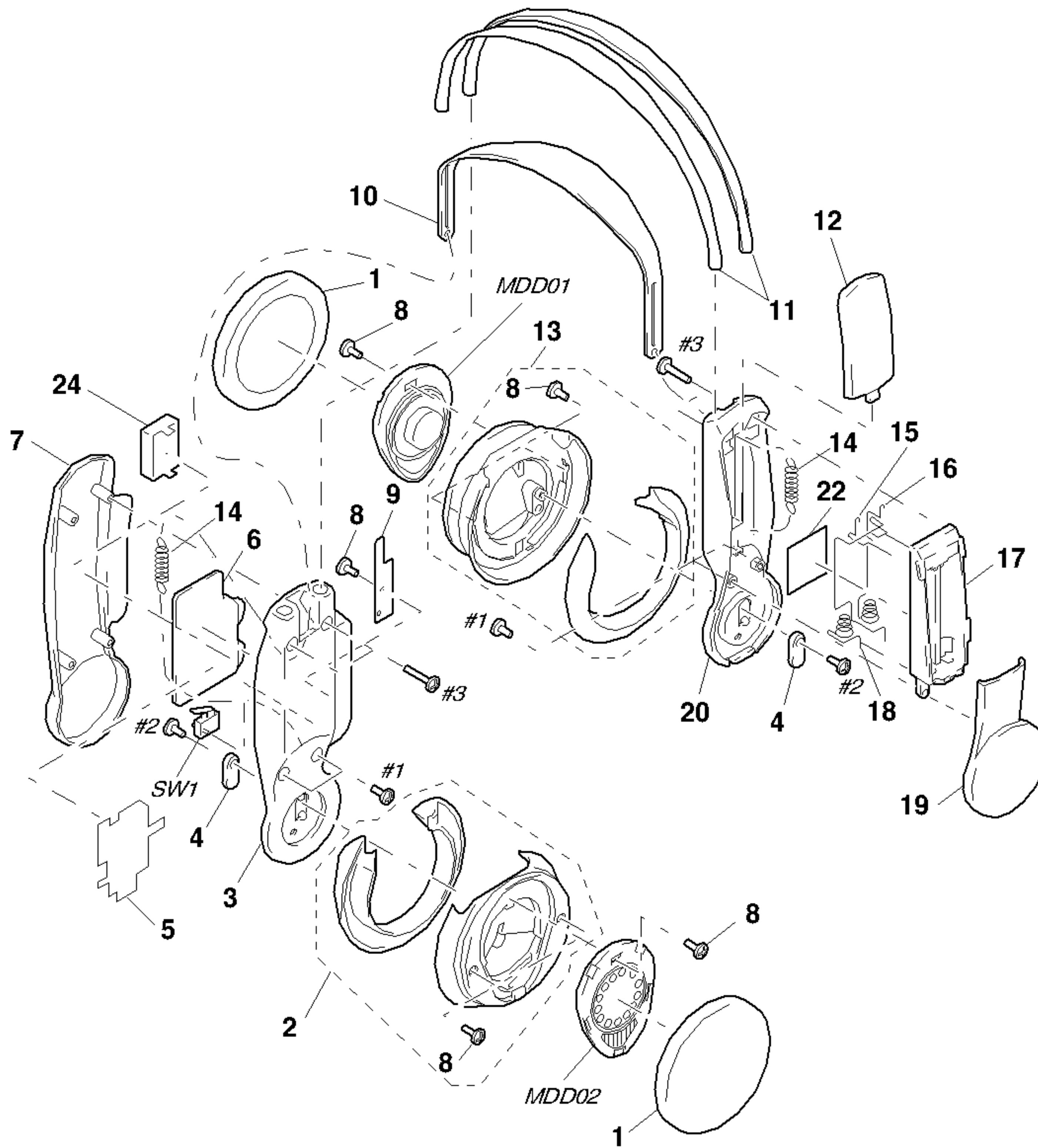


## SECTION 4 EXPLODED VIEWS

**NOTE :**

- -XX, -X mean standardized parts, so they may have some difference from the original one.
- Items marked “\*” are not stocked since they are seldom required for routine service. Some delay should be anticipated when ordering these items.
- The mechanical parts with no reference number in the exploded views are not supplied.
- Hardware (# mark) list and accessories and packing materials are given in the last of this parts list.

**4-1. MDR-RF430**



Ref. No.	Part No.	Description	Remark	Ref. No.	Part No.	Description	Remark
1	4-994-129-01	PAD, EAR		14	4-995-475-01	SPRING, TENSION	
2	X-4950-086-1	HOUSING (R) ASSY		15	4-994-130-01	TERMINAL (+), BATTERY	
3	4-994-119-01	HANGER (R)		16	4-994-132-01	TERMINAL (MIDWAY), BATTERY	
4	4-992-281-01	HOLDER, BALL SHAFT		17	4-993-020-01	CASE, BATTERY	
5	4-210-280-01	PLATE, RX SHIELD		18	4-994-131-01	TERMINAL (-), BATTERY	
* 6	A-4542-510-A	RX BOARD, COMPLETE		19	4-994-122-01	COVER (L), HANGER	
7	4-994-121-01	COVER (R), HANGER		20	4-994-120-01	HANGER (L)	
8	3-713-791-01	SCREW (M1.7X4), TAPPING, P2		22	3-831-441-99	CUSHION, SPEAKER	
9	4-995-597-01	SPACER		* 24	A-4542-531-A	FE BOARD, COMPLETE	
10	4-994-124-01	SUSPENDER		MDD01	1-505-117-21	RECEIVER (L-CH)	
11	4-994-118-01	BAND, HEAD		MDD02	1-505-117-21	RECEIVER (R-CH)	
12	4-994-123-01	COVER, BATTERY		SW1	1-771-249-11	SWITCH, PUSH (1 KEY) (POWER)	
13	X-4950-087-1	HOUSING (L) ASSY					