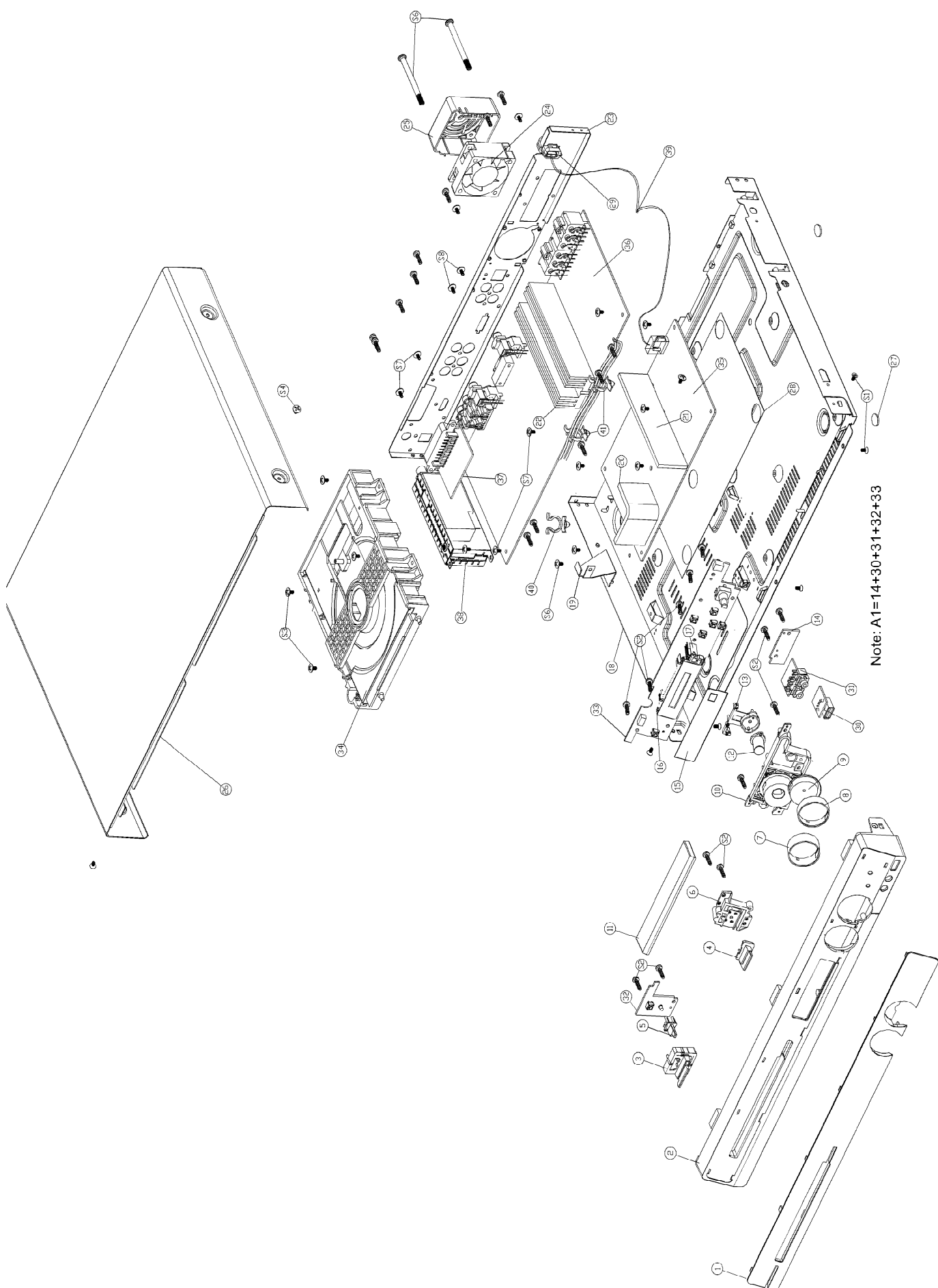
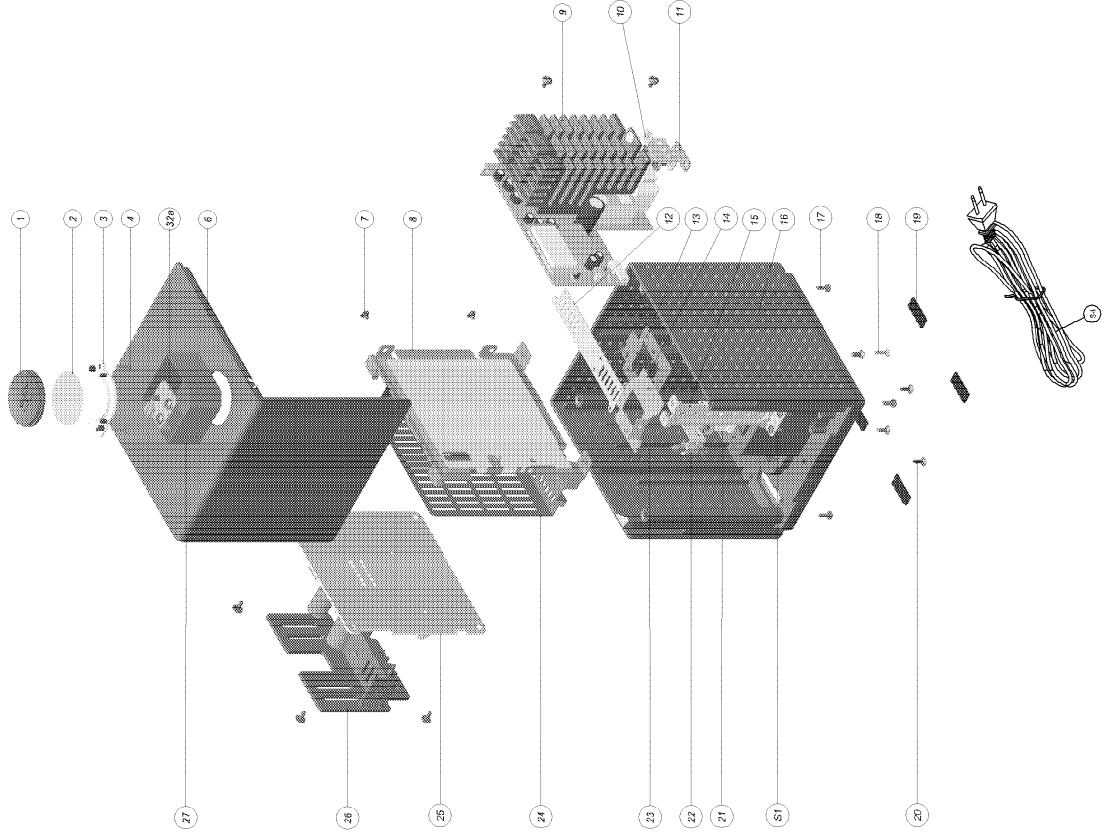


Mechanical Exploded View (whole set excluding DVD loader)-main unit



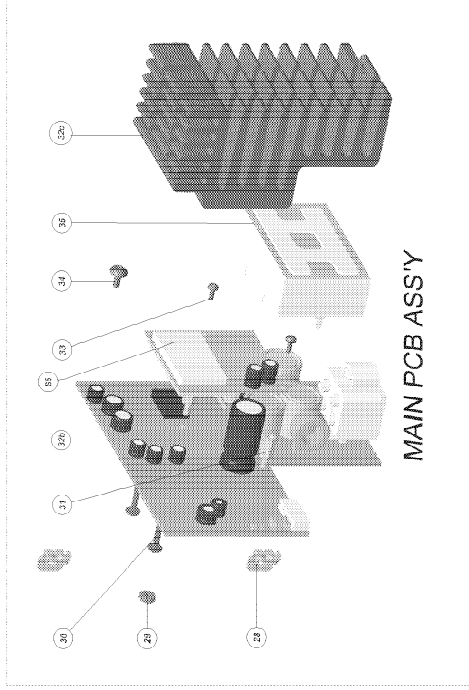
Note: A1=14+30+31+32+33

Mechanical Exploded View-wireless

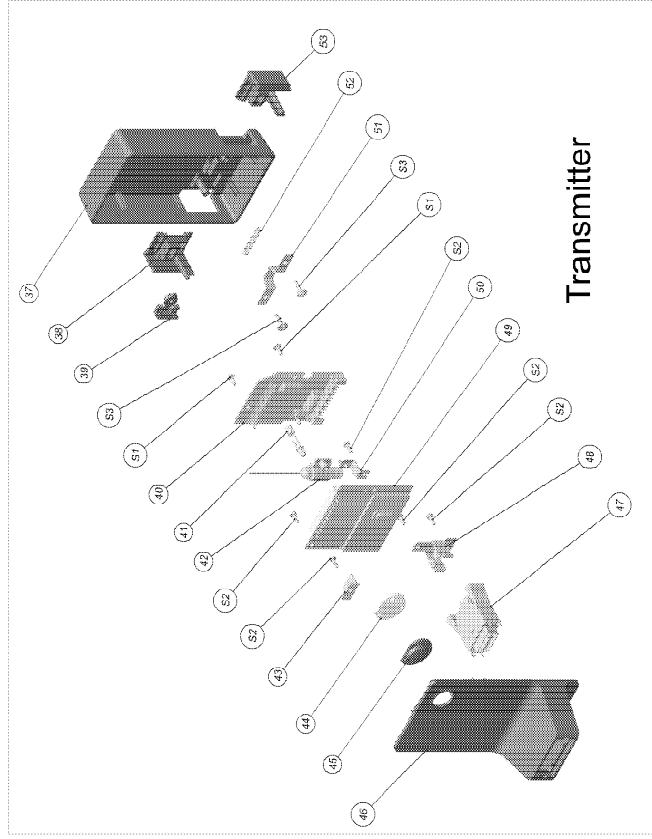


Receiver

Note:32=32a+32b+32c



MAIN PCB ASS'Y



Transmitter

MECHANICAL PART LIST

Main Unit

Loc	Part No	Description
1	996510001254	DISPLAY LENS
2	996510007317	FRONT CABINET
3	996510001256	STANDY BUTTON
4	996510001257	OPEN/CLOSE BUTTON
5	996510001662	STANDY LED LENS
7	996510001663	FUNCTION BUTTON RING
8	996510001664	VOLUME KNOB RING
9	996510001261	VOLUME KNOB RING
10	996510001262	FUNCTION BUTTON
11	31430276784.1	FRONT DOOR HTS335W
12	996510003835	SOURCE BUTTON
18	314302767102	PLATE BOTTOM ASSY
19	314302120751	TOP SUPPORT BRACKET
23	314302767151	BACKPLATE HTS3357/12
24	314302850221	FAN ASSY
25	314302750811	FAN COVER
26	314302767121	TOP COVER
27	996400005305	RUBBER FOOT D14X13.0MM
34	314302711752	LOADER ASSY
35	314302711731	ASSY POWER 3D
36	314302711732	ASSY MAIN BD
38	242254200044	TUN A
39	314302100561	POWER CORD EUR
AM	314302767831	FRONT CABINET ASSY
FM	314302100511	AM ANTENNA
RC	314302100521	FM ANTENNA
CN301	314302850271	REMOTE CONTROL
CN801	996510000673	FFC CABLE 10P 100MM P1.25MM
SCART	314302100692	GPU CABLE
STEREO	314302100541	SCART CABLE
	314302100551	STEREO CABLE

SPEAKER

Loc	Part No	Description
SPKC	996510001666	SPEAKER BOX -CENTER
SPKFL	996510001667	SPEAKER BOX -FRONT LEFT
SPKFR	996510001668	SPEAKER BOX - FRONT RIGHT
SPKRL	996510001669	SPEAKER BOX- REAR LEFT
SPKRR	996510001670	SPEAKER BOX- REAR RIGHT
SUBW	31430271563	HTS3357 SUBW
RFC	996510001599	RUBBER FOOT -CENTER SPK
RF	996510001600	RUBBER FOOT-FRONT SPK
RF	996510001601	RUBBER FOOT - REAR SPK
RFS	996500028375	RUBBER FOOT -SUB

WIRELESS

Loc	Part No	Description
1	996520031043	LED LENS TRANSPARENT
2	996520031042	LED FILTER SHEET
3	996520031044	LENS BASE PMMA
6	996510006941	GP FRONT CABINET FOR RCV ABS
12	996510005062	PVC SHEET-R
16	996510006940	GP BOTTOM HOLDER FOR RCV ABS
19	996510005060	RUBBER FOOT
22	996510005063	SYNC KEY ABS
24	996510005061	PVC SHEET-L
25	996510005060	SMPS PCB
27	996510005066	PVC COVER
32	996510006939	GP MAIN +LED+HEATSINK 2 PCB AS
37	996510005066	REAR COVER HIP
38	996510005064	PUSH BUTTON-L
40	996510005052	CONNECTIONS PCB
42	996510005059	ANT BKT ABS
44	996520031045	LOGO BASE PMMA
45	996520031041	LOGO LENS TRANSPARENT
46	996510005067	FRONT COVER
47	996510005068	DZ JACK
49	996510005055	UAWO PCB (TRANSMITTER)
53	996510005065	PUSH BUTTON-R
S4	996510002650	POWER CORD
S5	996510005054	UAWO PCB (RECEIVER)