



Philips Consumer Lifestyle

# Service Manual

## PRODUCT INFORMATION

### General:

- Rechargeable
- World-wide automatic voltage selection
- Electronic on/off switch
- Washable

### Safety information

- This product meets the requirements regarding interference suppression on radio and TV.
- After the product has been repaired, it should function properly and has to meet the safety requirements as officially laid down at this moment.

## TECHNICAL INFORMATION

- Voltage : 100 - 240 Volt / 50 - 60 Hz
- Motor voltage : 1,2 Volt
- Shaving heads : HQ8/3 - 4222 036 15870
- SAP coding : HQ7390

## DISASSEMBLY- AND RE-ASSEMBLY ADVICE

### Disassembly:

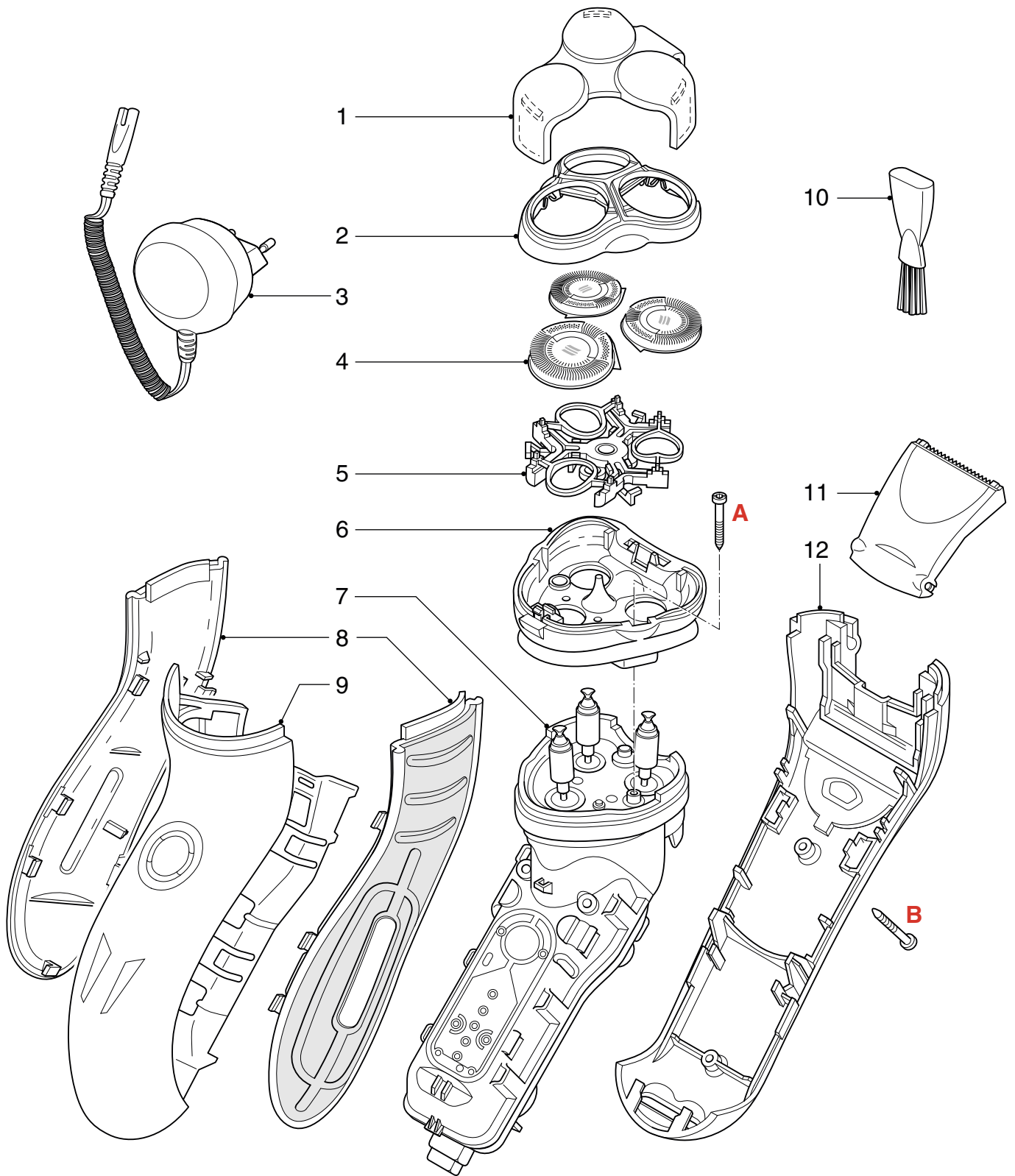
- Remove shaving unit, to prevent damaging during repairing
- Remove the 2 screws (A) out of the hairchamber
- Remove the hairchamber from the body
- Remove the 2 screws (B) on the backside of the shaver
- Remove the cover
- Remove the side grips
- Remove the housing by bending the hooks with a screwdriver
- Take out the basic body

## REPAIR INSTRUCTION

- No specific issues

## OPTIONAL (accessories)

- Pouch soft 4222 036 14160
- Power plug curl.
  - Europa 4222 036 06790
  - Aus/Nz 4222 036 04020
  - GBR 4222 036 03970
  - Can/TW 4222 036 06800
  - MEX 4222 036 04030
  - KOR 4222 036 04000
  - JAP 4222 036 08930
  - PRC 4222 036 04040
  - ARG 4222 036 03980



Pos	Service code	Description
1	4222 036 14050	Protection cap
2	4222 036 12610	Bracket-assy
3	see optional	Power plug
4	4222 036 15870	Shaving heads
5	4222 036 12990	Holder-assy
6	4222 036 16370	Hairchamber
7	4222 036 12810	Basic body

Pos	Service code	Description
8	4222 036 12590	Grip left & right
9	4222 036 16380	Housing-assy
10	4222 036 02770	Brush
11	4222 036 15960	Trimmer assy
12	4222 036 16390	Back shell assy
	4222 036 11480	Screw