



S/M No. :

Integration

Exploded View & Part List

Product : Refrigerator (400L class)

- MODEL :** * FR-520/550NT
* FR-521/551KT_KB
* FR-521/551NT
* FR-581NW
* FR-530/590NT
* FR-590NW
* _____
* _____
* _____
* _____
* _____
* _____
* _____
* _____
* _____
* _____
* _____
* _____
* _____
* _____
* _____

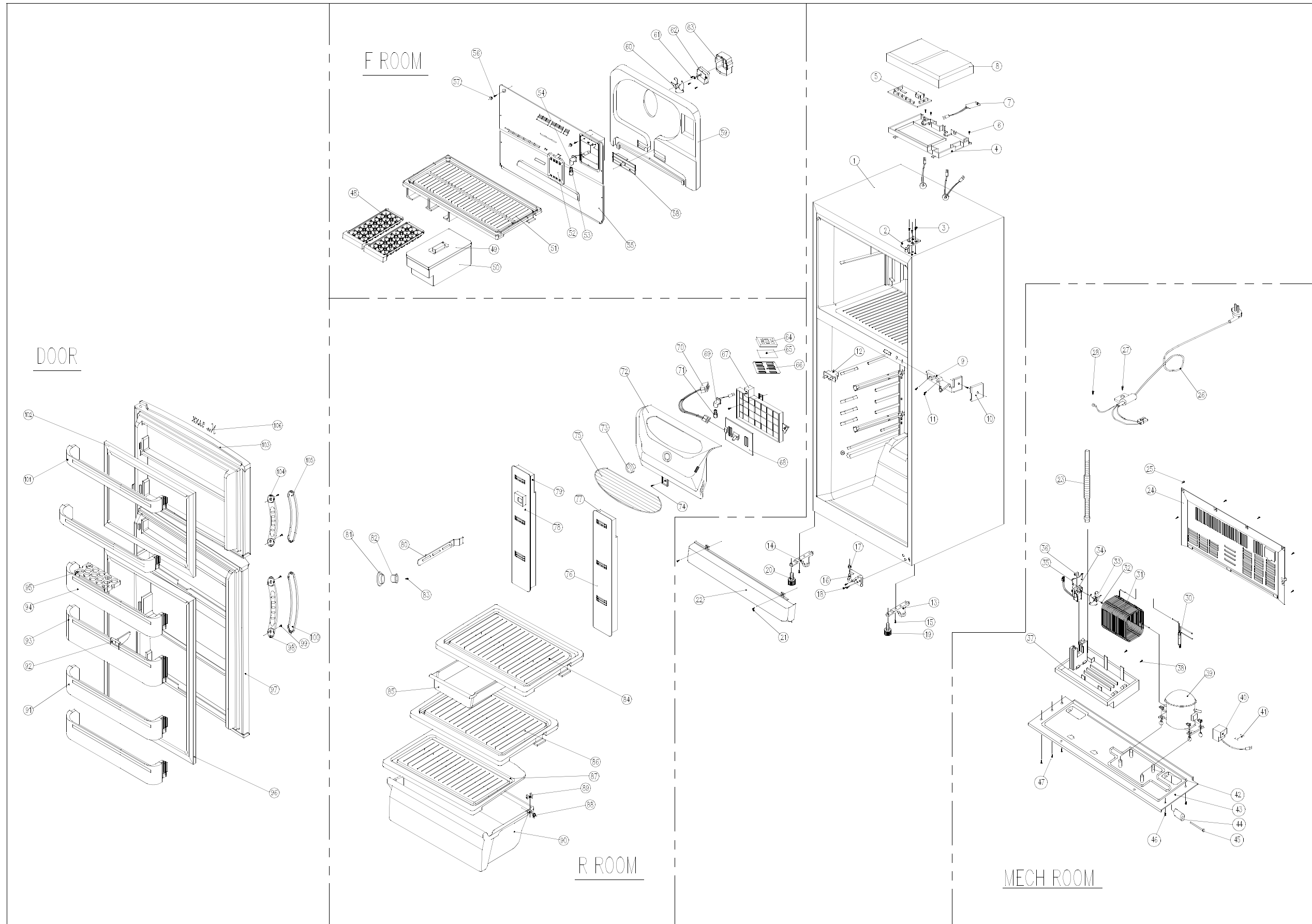
✓ Caution

: In this Manual, some parts can be changed for improving, their performance without notice in the parts list. So, if you need the latest parts information, please refer to PPL(Parts Price List) in Service Information Center(<http://svc.dwe.co.kr>).

DAEWOO ELECTRONICS CO., LTD.

1. FR-520_550NT

1-1. EXPLODED VIEW



1-2. PART LIST

1) FR-520_550NT (# : Refer to PPL in <http://svc.dwe.co.kr>)

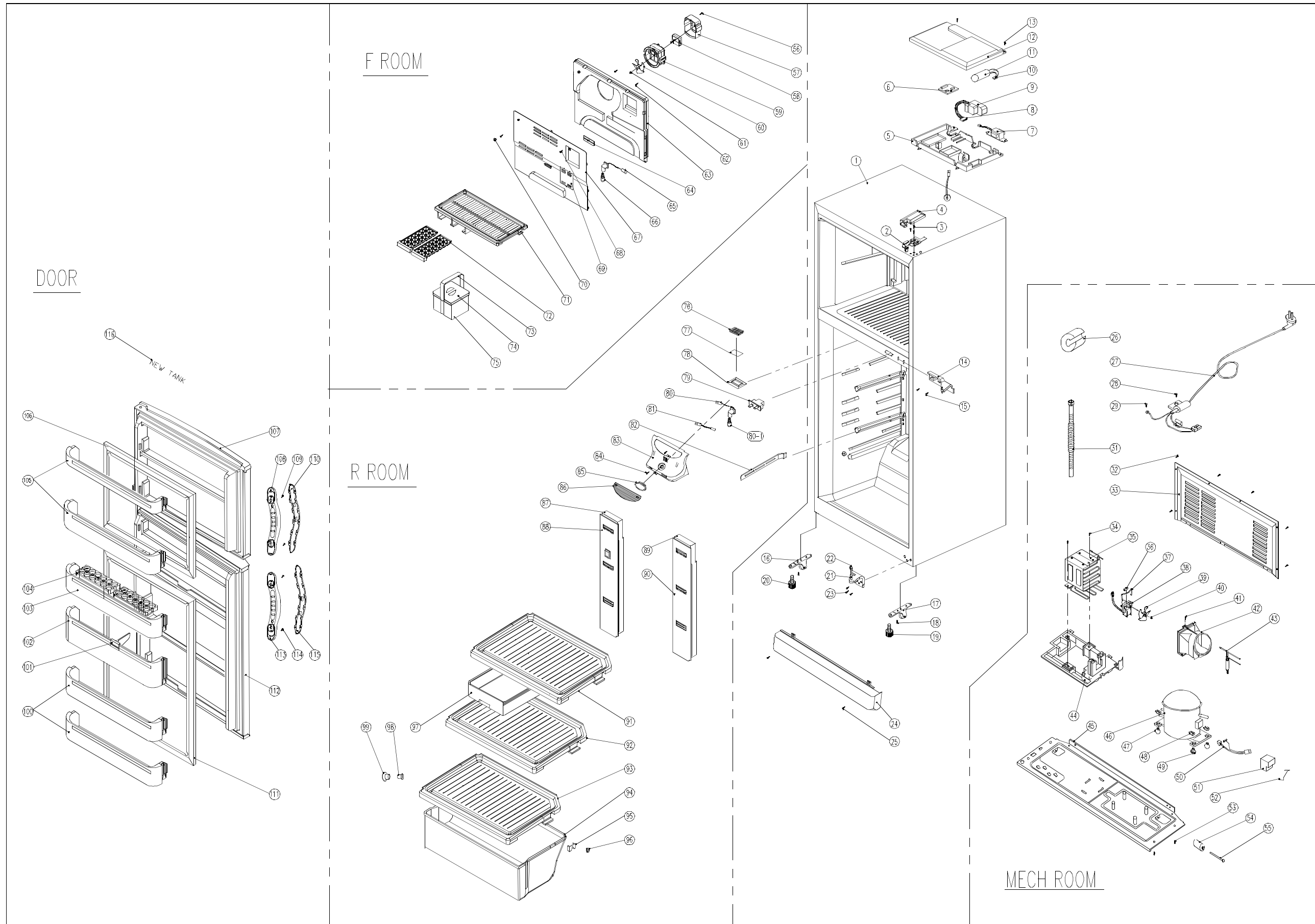
NO	PART CODE	PART NAME	PART DESCRIPTION	QUANTITY	REMARK
1	3010074800	ASSY CAB URT	FR-520NT	1	
1	3010074900	ASSY CAB URT	FR-550NT	1	
2	3012910100	HINGE *T		1	
3	3016001230	SPECIAL BOLT T/U	6X22 SWCH22A(WH)	3	
4	3010511700	BOX MPCB		1	
5		PCB MAIN AS		1	#
6	7112401211	SCREW TAPPING	MFZN, T1 TRS 4X12	3	
7		CAPACITOR		1	#
8	3011425300	COVER M/PCB BOX		1	
9	3012905501	HINGE *M		1	
10	3011424700	COVER *M HI		1	
11	3016001220	SPECIAL BOLT M	6X20 SWCH22A(WH)	3	
12	3018100030	SWITCH DR		1	
13	3012103000	FOOT *F *R AS		1	
14	3012102900	FOOT *F *L AS		1	
15	3016000700	SPECIAL SCREW	M6X15	2	
16	3012906410	HINGE *U AS		1	
17	3016005300	SPECIAL WASR		1	
18	3016001230	SPECIAL BOLT T/U	6X22 SWCH22A(WH)	3	
19	3012101500	FOOT ADJ AS		1	
20	3012102500	FOOT ADJ *L AS		1	
21	7112401211	SCREW TAPPING	MFZN, T1 TRS 4X12	2	
22	3011439900	COVER CAB BRKT		1	
23	3013202700	HOSE DRN B		1	
24	3012401400	GRILLE		1	
25	7112401211	SCREW TAPPING	MFZN, T1 TRS 4X12	6	
26		CORD POWER AS		1	#
27	7112401211	SCREW TAPPING	MFZN, T1 TRS 4X12	1	
28	7001400865	SCREW MACHINE	PAN 4X8 BSNI	1	
29	3011302900	FUSE GLASS TUBE		1	
30		DRYER AS		1	#
31	3014423900	PIPE WICON AS		1	
32	3011200500	CLAMP FAN		1	
33	3011800400	FAN		1	
34		MOTOR C		1	#
35	3012004400	FIXTURE C MOTR		1	
36	3010102100	ABSORBER C MOTR		1	
37	3011118000	CASE VAPORI		1	
38	7112401211	SCREW TAPPING	MFZN, T1 TRS 4X12	2	
39		COMPRESSOR		1	#
40		SWITCH P RELAY AS		1	#
41	3012610000	CLAMP BAND RELAY		1	
42	4010G01123	SPECIAL BOLT		1	
43	3010314900	BASE COMP		1	

NO	PART CODE	PART NAME	PART DESCRIPTION	QUANTITY	REMARK
44	3016500000	CASTER *B		2	
45	3014902900	SHAFT CASTR *B		2	
46	3016003300	SPECIAL BOLT	T2 M6.5X20	4	
47	3016003400	SPECIAL BOLT	T1 M5.0X14	1	
48	3011110200	CASE ICING		2	
49	3011439800	COVER ICE BOX		1	
50	3010513000	BOX ICE		1	
51	3017807500	SHELF F		1	
52	3015504200	WINDOW F		1	
53	3013600030	LAMP AS	240V/15W (E14)	1	
54	3017903400	SOCKET F LAMP AS		1	
55	3018902700	LOUVER F		1	
56	7112401811	SCREW TAPPING	MFZN, T1 TRS 4X18	2	
57	3010924600	CAP F LUVR		1	
58	3013402100	KNOB F CONTL		1	
59	3013331700	INSU F LUVR		1	
60	3011800400	FAN		1	
61	3012007300	FIXTURE MOTR B		1	
62	3012004001	FIXTURE MOTR		1	
63	7112401611	SCREW TAPPING	MFZN, T1 TRS 4X16	3	
64	3018700100	DEODRANT AU RETURN		1	
65	3018700700	DEODRANT SHEET		1	
66	3011102501	CASE DEO A		1	
67	3010512900	BOX V/SW PCB		1	
68	3014305400	PCB V/SW AS		1	
69	3017903300	SOCKET R LAMP AS		1	
70	3013600030	LAMP AS	240V/15W (E14)	1	
71	3012720600	HARNES V/SW AS		1	
72	3011439600	COVER PCB V/SW BOX		1	
73	3013402000	KNOB CONTL		1	
74	7112401211	SCREW TAPPING	MFZN, T1 TRS 4X12	1	
75	3015504000	WINDOW R		1	
76	3018906400	LOUVER R *S *R	FR-520NT	1	
76	3018902600	LOUVER R *S *R	FR-550NT	1	
77	3013331200	INSU R *S *R	FR-520NT	1	
77	3013331000	INSU R *S *R	FR-550NT	1	
78	3018906300	LOUVER R *S *L	FR-520NT	1	
78	3018902500	LOUVER R *S *L	FR-550NT	1	
79	3013331100	INSU R *S *L	FR-520NT	1	
79	3013330900	INSU R *S *L	FR-550NT	1	
80	3011439500	COVER CUBIC/D		4	
81	3014700600	ROLLER V/CASE FIXR		2	
82	3015303600	SUPPORTE V/CASE ROL		2	
83	7112402011	SCREW TAPPING	MFZN, T1 TRS 4X20	2	

NO	PART CODE	PART NAME	PART DESCRIPTION	QUANTITY	REMARK
84	3017802300	SHELF R *T		1	
85	3011117800	CASE CHILLED		1	
86	3017805100	SHELF R *U		1	
87	3011439700	COVER V/CASE		1	
88	3014700500	ROLLER V/CASE		2	
89	3011432800	COVER ROLL A		2	
90	3011117700	CASE VEGETB		1	
91	3019011000	POCKET MULT	GPPS, FR-520NT(3)	1	
91	3019011000	POCKET MULT	GPPS, FR-550NT(3, 4)	2	
92	3012505700	GUIDE JUMBO POCKET		1	
93	3019010900	POCKET JUMBO		1	
94	3019008900	POCKET EGG		2	
94	3019008900	POCKET EGG		1	
95	3011117600	CASE EGG		2	
96	3012304400	GASKET R DR AS	FR-520NT	1	
96	3012301700	GASKET R DR AS	FR-550NT	1	
97		ASSY R DR		1	#
98	3012610600	HANDLE R		1	
99	7051501611	SCREW MACHINE	MFZN, PAN 5X16 SW FRB-5460CT	4	
100	3011608400	DECO R HNDL		1	
101	3019011100	POCKET F		2	
102	3012301400	GASKET F DR AS		1	
103		ASSY F DR		1	#
104	3012610500	HANDLE F		1	
105	3011608300	DECO F HNDL		1	
106	3014516740	PLATE TANK EBLM AS		1	

2. FR-521_551KT_KB

2-1. EXPLODED VIEW



2-2. PART LIST

1) FR-521_551KT_KB (# : Refer to PPL in <http://svc.dwe.co.kr>)

Ⓡ is recommendable parts for essential stock.

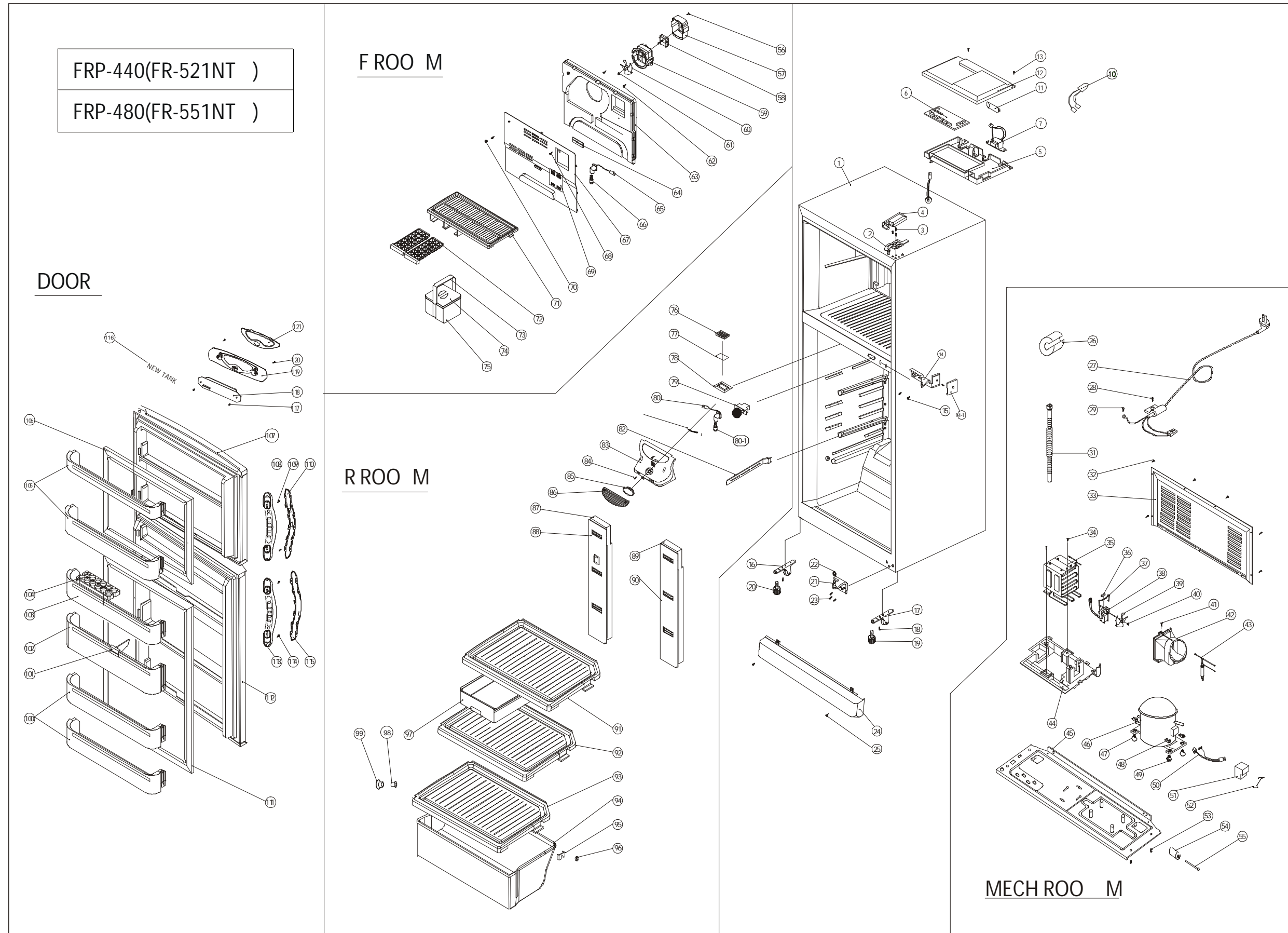
NO	PART CODE	PART NAME	PART DESCRIPTION	QUANTITY	REMARK
1	3010074920	ASSY CAB URT	FRM-480	1	
	3010074940	ASSY CAB URT	FRM-480	1	
	3010074820	ASSY CAB URT	FRM-440	1	
	3010074840	ASSY CAB URT	FRM-440	1	
2	3012905400	HINGE *T	"SCP1, T2.3"	1	
3	3016001230	SPECIAL BOLT T/U	6*ø22 SWCH22A(WH)	3	
4	3011429000	COVER *T HI	PP	1	
5	3010519800	BOX MAIN POWER	PP	1	
Ⓡ 6		PCB MAIN AS		1	#
Ⓡ 7		TRANS POWER		1	#
8	3012723400	HARNESS DEF TIMER		1	
Ⓡ 9		SWITCH DEF TIMER	10HR	1	#
10	3012712501	HARNESS RUN CON		1	
Ⓡ 11		CAPACITOR RUN		1	#
12	3011444900	COVER M-PCB BOX	P.P	1	
13	7112401211	SCREW TAPPING	T1 TRS 4*ø12 MFZN	2	
14	3012905801	HINGE *M AS	"PO T3.2 , FRB-5460CT"	1	
14-1	3011424700	COVER *M HI	ABS	1	
15	3016001220	SPECIAL BOLT M	6*ø20 SWCH22A(WH)	3	
16	3012102900	FOOT *F *L AS		1	
17	3012103000	FOOT *F *R AS		1	
18	3016000700	SPECIAL SCREW	M6*ø15	2	
19	3012101500	FOOT ADJ AS	FRB-5350NB	1	
20	3012102500	FOOT ADJ *L AS	FRB-5350NB	1	
21	3012906410	HINGE *U AS	FRB-5460CT	1	
22	3016005300	SPECIAL WASR	S10C T1.5	1	
23	3016001230	SPECIAL BOLT T/U	6*ø22 SWCH22A(WH)	3	
24	3011439900	COVER CAB BRKT	PP	1	
25	7112401211	SCREW TAPPING	T1 TRS 4*ø12 MFZN	2	
26	3010103700	ABSORBER SUC P	NR	1	
Ⓡ 27		CORD POWER AS		1	#
28	7112401211	SCREW TAPPING	T1 TRS 4*ø12 MFZN	1	
29	7001400865	SCREW MACHINE	PAN 4*ø8 BSNI	1	
31	3013202700	HOSE DRN B	PP	1	
32	7112401211	SCREW TAPPING	T1 TRS 4*ø12 MFZN	6	
33	3012401410	GRILLE	SBHGI T0.4	1	
34	7112401211	SCREW TAPPING	T1 TRS 4*ø12 MFZN	2	
35	3014426900	PLT WICON AS	FLTT SW D4.76	1	
36	3010102100	ABSORBER C MOTR	"NR, FRB-5350NT"	1	
37	3012004400	FIXTURE C MOTR	SUC	1	
38	3015906800	MOTOR C	BLDC 12V	1	
39	3011800400	FAN		1	
40	3011200500	CLAMP FAN	SUS304	1	
41	7112401211	SCREW TAPPING	T1TRS 4x12 MFZN	1	
42	3011445000	COVER C FAN		1	
Ⓡ 43		DRYER AS		1	#
44	3011119300	CASE VAPORI	P.P	1	
45	3010314910	BASE COMP	SBHGI T1.0	1	
Ⓡ 46		COMPRESSOR		1	#
47	3010101440	ABSORBER COMP AS		2	
48	3016002500	SPECIAL WASHER	SK-5 T0.8	4	
49	3010100201	ABSORBER COMP	NR H=40	2	
Ⓡ 51		SWITCH P-RELAY AS	4TM197NHBYY-52	1	#
52	3012610000	CLAMP BAND RELAY	SK-5 T0.7	1	
53	3016003300	SPECIAL BOLT	T2 M6.5*ø20	4	
54	3016500000	CASTER *B	"PP, FRB-5350NT"	2	

NO	PART CODE	PART NAME	PART DESCRIPTION	QUANTITY	REMARK
55	3014902900	SHAFT CASTER *B	SWRM-10	2	
56	7112401211	SCREW TAPPING	T1TRS 4x12 MFZN	1	
57	3012007900	FIXTURE MOTR B	P.P	1	
Ⓡ 58		MOTOR R	BLDC 12V	1	#
59	3012007800	FIXTURE MOTR A	P.P	1	
60	3011802200	FAN	ABS(OD110)	1	
61	3011200500	CLAMP FAN	SUS 304	1	
62	7112401611	SCREW TAPPING	T1TRS 4x16 MFZN	2	
63	3013334100	INSU F-LUVR	F-PS	1	
64	3013402100	KNOB F CONTL	PP	1	
65	3017903420	SOCKET F LAMP AS		1	
Ⓡ 66		LAMP AS		1	#
67	3018908200	LOUVER F	HIPS	1	
68	7112401611	SCREW TAPPING	T1 TRS 4*ø16 MFZN	2	
69	3015504200	WINDOW F	GPPS	1	
70	3010924600	CAP F-LUVR	HIPS T2.3	1	
71	3017807500	SHELF F	HIPS	1	
72	3011110200	CASE ICING	"PP, FRB-5350NT"	2	
73	3012603400	HANDLE ICE BOX	ABS	1	
74	3011445500	COVER ICE BOX	GPPS	1	
75	3010519600	BOX ICE	HIPS	1	
76	3018701300	DEO ANTI RETURN		1	
77	3018700700	DEODORANT SHEET	UNITRON	1	
78	3011102501	CASE DEO A	P.P	1	
79	3018100050	SWITCH DR	2 BUTTON/4PIN	1	
80	3017903600	SOCKET R LAMP AS		1	
Ⓡ 80-1		LAMP AS		1	#
81	3012805200	HEATER THERMO AS		1	
82	3011439500	COVER CUBIC/D	HIPS	4	
83	3011445000	COVER CONTL	HIPS	1	
84	7112401611	SCREW TAPPING	T1TRS 4x16 MFZN	1	
85	3013401500	KNOB CONTL	ABS	1	
86	3015504000	WINDOW R	GPPS	1	
87	3013331100	INSU R *S *L	"F-PS, FRB-4460NT"	1	
	3013330900	INSU R *S *L	"F-PS, FRB-4760NT"	1	
88	3018906300	LOUVER R *S *L	"PP, FRB-4460NT"	1	
	3018902500	LOUVER R *S *L	"PP, FRB-4760NT"	1	
89	3013331200	INSU R *S *R	"F-PS, FRB-4460NT"	1	
	3013331000	INSU R *S *R	"F-PS, FRB-4760NT"	1	
90	3018906400	LOUVER R *S *R	"P.P, FRB-4460NT"	1	
	3018902600	LOUVER R *S *R	"P.P, FRB-4760NT"	1	
91	3017802300	SHELF R *T	GPPS	1	
92	3017805100	SHELF R *U	GPPS	1	
93	3011439700	COVER V/CASE	GPPS	1	
94	3011117700	CASE VEGETB	GPPS	1	
95	3011432800	COVER ROLL A	HIPS	2	
96	3014700500	ROLLER V/CASE	POM	2	
97	3011117800	CASE CHILLED	GPPS	1	
98	3014700600	ROLLER V/CASE FIXR	POM	2	
99	3015303600	SUPPORTER V/CASE ROL	HIPS	2	
100	3019011000	POCKET MULT	"GPPS, FRB-4760NT"	1	
	3019008900	POCKET EGG		1	
	3019011000	POCKET MULT	"GPPS, FRB-4760NT"	2	
101	3012505700	GUIDE JUMBO PCKT	"ABS, FRB-5050NT"	1	
102	3019010900	POCKET JUMBO	GPPS	1	
103	3019008900	POCKET EGG	GPPS	1	

NO	PART CODE	PART NAME	PART DESCRIPTION	QUANTITY	REMARK
104	301117600	CASE EGG	GPPS	2	
105	3019011100	POCKET F	GPPS	2	
106	3012307330	GASKET F DR AS	"PVC, FRB-4870KT"	1	
107	3010075140	ASSY F DR	FRB-44/4870KT	1	
108	3012610710	HANDLE F DR	ABS+CR	1	
109	7002501611	SCREW MACHINE	TRS 5x16 MFZN	2	
110	3011603310	DECO F HNDL	ABS	1	
111	3012307440	GASKET R DR AS	"PVC, FRB-4470NT"	1	
	3012307430	GASKET R DR AS	"PVC, FRB-4870NT"	1	
112	3010082310	ASSY R DR	FRB-4470NT	1	
	3010082300	ASSY R DR	FRB-4870NT	1	
113	3012610810	HANDLE R DR	ABS+CR	1	
114	7002501611	SCREW MACHINE	TRS 5x16 MFZN	2	
115	3011603410	DECO R HNDL	ABS	1	
116	3014532600	PLATE TANK EBLM		1	

3. FR-521_551NT

3-1. EXPLODED VIEW



3-2. PART LIST

1) FR-521_551NT (# : Refer to PPL in <http://svc.dwe.co.kr>)

Ⓡ is recommendable parts for essential stock.

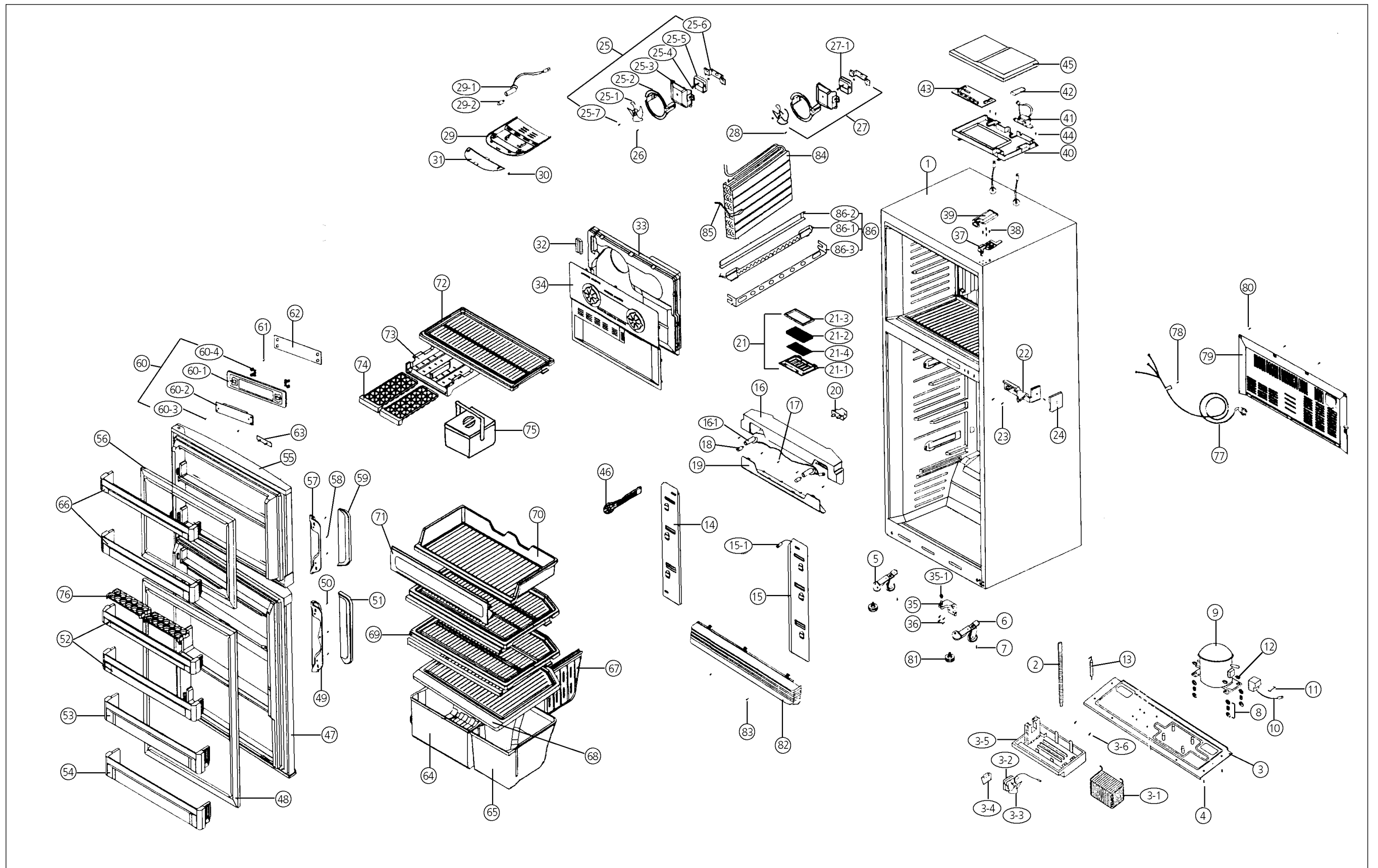
NO	PART CODE	PART NAME	PART DESCRIPTION	QUANTITY	REMARK
1	3010074930	ASSY CAB URT	FRP-440	1	
	3010074940	ASSY CAB URT	FRP-440(HCFC)		
	3010074830	ASSY CAB URT	FRP-480	1	
	3010074940	ASSY CAB URT	FRP-480(HCFC)		
2	3012905400	HINGE *T	SCP1, T2.3	1	
3	3016001230	SPECIAL BOLT T/U	6x22 SWCH22A(WH)	3	
4	3011429000	COVER *T HI	PP	1	
5	3010519800	BOX MAIN POWER	PP	1	
Ⓡ6		PCB MAIN AS		1	#
Ⓡ7		TRANS POWER		1	#
10		HARNESS RUN CON		1	
Ⓡ11		CAPACITOR RUN		1	#
12	3011444900	COVER M-PCB BOX	P.P	1	
13	7112401211	SCREW TAPPING	T1 TRS 4x12 MFZN	2	
14	3012905801	HINGE *M AS	PO T3.2, FRB-5460CT	1	
14-1	3011424700	COVER *M HI	ABS	1	
15	3016001220	SPECIAL BOLT M	6 1/2 20 SWCH22A(WH)	3	
16	3012102900	FOOT * F * L AS		1	
17	3012103000	FOOT * F * R AS		1	
18	3016000700	SPECIAL SCREW	M6 x 15	2	
19	3012101500	FOOT ADJ AS	FRB-5350NB	1	
20	3012102500	FOOT ADJ * L AS	FRB-5350NB	1	
21	3012906410	HINGE * U AS	FRB-5460CT	1	
22	3016005300	SPECIAL WASR	S10C T1.5	1	
23	3016001230	SPECIAL BOLT T/U	6 x 22 SWCH22A(WH)	3	
24	3011439900	COVER CAB BRKT	PP	1	
25	7112401211	SCREW TAPPING	T1 TRS 4 1/2 12 MFZN	2	
26	3010103700	ABSORBER SUC P	NR	1	
27		CORD POWER AS		1	#
28	7112401211	SCREW TAPPING	T1 TRS 4 1/2 12 MFZN	1	
29	7001400865	SCREW MACHINE	PAN 4 x 8 BSN	1	
31	3013202700	HOSE DRN B	PP	1	
32	7112401211	SCREW TAPPING	T1 TRS 4 1/2 12 MFZN	6	
33	3012401410	GRILLE	SBHGI T0.4	1	
34	7112401211	SCREW TAPPING	T1 TRS 4 1/2 12 MFZN	2	
35	3014426900	PLT WICON AS	FLTT SW D4.76	1	
36	3010102100	ABSORBER C MOT	NR, FRB-5350NT	1	
37	3012004400	FIXTURE C MOTR	SUC	1	
Ⓡ38	3015906800	MOTOR C	BLDC 12V	1	
Ⓡ39	3011800400	FAN		1	
40	3011200400	CLAMP FAN	SUS304	1	
41	7112401211	SCREW TAPPING	T1 TRS 4 1/2 12 MFZN	1	
42	3011445000	COVER C FAN		1	
Ⓡ43		DRYER AS		1	#
44	3011119300	CASE VAPORI	P.P	1	
45	3010314910	BASE COMP	SBHGI T1.0	1	
Ⓡ46		COMPRESSOR	HIPS	1	#
47	3010101440	ABSORBER COMP AS		2	
48	3016002500	SPECIAL WASHER	SK-5 T0.8	4	
49	3010100201	ABSORBER COMP	NR H=40	2	
50		HARNESS RELAY		1	
Ⓡ51		SWITCH P-RELAY AS		1	#
52	3012610000	CLAMP BRAND RELAY	SK-5 T0.7	1	
53	3016003300	SPECIAL BOLT	T2 M6.5 x 20	4	
54	3016500000	CASTER * B	PP, FRB-5350NT	2	
55	3014902900	SHAFT CASTER * B	SWRM-10	2	

NO	PART CODE	PART NAME	PART DESCRIPTION	QUANTITY	REMARK
56	7112401211	SCREW TAPPING	T1TRS 4 x 12 MFZN	1	
57	3012007900	FIXTURE MOTR B	P.P	1	
Ⓡ58	3015907200	MOTOR F	BLDC 12V	1	
59	3012007800	FIXTURE MOTR A	P.P	1	
Ⓡ60	3011802200	FAN	ABS(OD110)	1	
61	3011200500	CLAMP FAN	SUS 304	1	
62	7112401611	SCREW TAPPING	T1TRS 4 x 16 MFZN	2	
63	3013334100	INSU F-LUVR	F-PS	1	
64	3013402100	KNOB F CONTL	PP	1	
65	3017903420	SOCKET F LAMP AS		1	
Ⓡ66		LAMP AS	15W	1	#
67	3018908200	LOUVER F	HIPS	1	
68	7112401611	SCREW TAPPING	T1TRS 4 x 16 MFZN	2	
69	3015504200	WINDOW F	GPPS	1	
70	3010924600	CAP F-LUVR	HIPS T2.3	1	
71	3017807500	SHELF F	HIPS	1	
72	3011110200	CASE ICING	PP, FRB-5350NT	2	
73	3012603400	HANDLE ICE BOX	ABS	1	
74	3011445500	COVER ICE BOX	GPPS	1	
75	3010519600	BOX ICE	HIPS	1	
76	3018701300	DEO ANTI RETURN		1	
77	3018700700	DEODORANT SHEET	UNITRON	1	
78	3011102501	CASE DEO A	P.P	1	
Ⓡ79		SWITCH DR	2 BUTTON/4 PIN	1	#
80	3017903610	SOCKET R LAMP AS		1	
Ⓡ80-1		LAMP AS	15W	1	#
Ⓡ81		R-SENSOR AS		1	#
82	3011439500	COVER CUBIC/D	HIPS	4	
83	3011445000	COVER CONTL	HIPS	1	
84	7112401611	SCREW TAPPING	T1TRS 4 x 12 MFZN	1	
85	3010918400	CAP CONTROL BOX	ABS	1	
86	3015504000	WINDOW R	GPPS	1	
87	3013331100	INSU R * S * L	F-PS, FRB-4460NT	1	
	3013330900	INSU R * S * L	F-PS, FRB-4760NT	1	
88	3018906300	LOUVER R * S * L	PP, FRB-4460NT	1	
	3018902500	LOUVER R * S * L	PP, FRB-4760NT	1	
89	3013331200	INSU R * S * R	F-PS, FRB-4460NT	1	
	3013331000	INSU R * S * R	F-PS, FRB-4760NT	1	
90	3018906400	LOUVER R * S * R	P.P, FRB-4460NT	1	
	3018902900	LOUVER R * S * R	P.P, FRB-4760NT	1	
91	3017802300	SHELF R * T	GPPS	1	
92	3017805100	SHELF R * U	GPPS	1	
93	3011439700	COVER V/CASE	GPPS	1	
94	3011117700	CASE VEGETB	GPPS	1	
95	3011432800	COVER ROLL A	HIPS	2	
96	3014700500	ROLLER V/CASE	POM	2	
97	3011117800	CASE CHILLED	GPPS	1	
98	3014700600	ROLLER V/CASE FI	POM	2	
99	3015303600	SUPPORTER V/CASE	HIPS	2	
Ⓡ100	3019011000	POCKET MULT	GPPS, FRB-4760NT	1	
	3019008900	POCKET EGG		1	
	3019011000	POCKET MULT	GPPS, FRB-4760NT	2	
101	3012505700	GUIDE JUMBO POCKET	ABS, FRB-4760NT	1	
102	3019010900	POCKET JUMBO	GPPS	1	
103	3019008900	POCKET EGG	GPPS	1	

NO	PART CODE	PART NAME	PART DESCRIPTION	QUANTITY	REMARK
104	301117600	CASE EGG	GPPS	2	
105	3019011100	POCKET F	GPPS	2	
106	3012307330	GASKET F DR AS	PVC, FRB-4870KT	1	
107		ASSY F DR	FRB-440/480	1	#
108	3012610710	HANDLE F DR	ABS + CR	1	
109	7002501611	SCREW MACHINE	TRS 5 x 16 MFZN	2	
110	3011603310	DECO F HNDL	ABS	1	
111	3012307440	GASKET R DR AS	PVC, FRB-4470NT	1	
	3012307430	GASKET R DR AS	PVC, FRB-4870KT	1	
112		ASSY R DR	FRP-440	1	#
		ASSY R DR	FRP-440	1	#
113	3012610810	HANDLE R DR	ABS + CR	1	
114	7002501611	SCREW MACHINE	TRS 5 x 16 MFZN	2	
115	3011603410	DECO R HNDL	ABS	1	
116	3014532600	PLATE TANK EBLM		1	
117	7173301011	SCREW TAPPING	TT2 BIN 3 x 12 MFZN	2	
118	3014385160	PCB * F AS	N808RT	1	
119	3014203210	PANEL * F CONTROL	ABS	1	
120	7125301211	SCREW TAPPING	T2S FLT 3 x 10 MFZN	2	
121	3015504600	WINDOW FCP AS	FRP-440	1	

4. FR-581NT

4-1. EXPLODED VIEW



4-2. PART LIST

1) FR-581NT (# : Refer to PPL in <http://svc.dwe.co.kr>)

NO	PART NAME	PART CODE		DESCRIPTION	Q'ty	REMARK
		FR-581NT	FR-661NT			
1	ASSY CAB URT				1	
2	HOSE DRAIN (B)	3013202200	←	PP	1	
3	BASE COMP AS	3010309100	←		1	
3-1	PIPE WI-CON AS	3014415500	←		1	
3-2	MOTOR C AS				1	#
3-3	FAN	3011800400	←	ABS (Ø110mm)	1	
3-4	FIXTURE C MOTOR AS	3012006000	←		1	
3-5	CASE VAPORI	3011111700	←	PP	1	
3-6	SCREW TAPPING	7112401211	←	T1 TRS 4 x 12 MFZN	2	
4	SPECIAL BOLT	3016003300	←	T2 6.5 x 20	4	
5	FOOT * F * L AS	3012700700	←		1	
6	FOOT * F * R AS	3012100600	←		1	
7	BOLT HEX	3016000700	←	M6 x 15	2	
8	ABSORBER COMP AS	3010101440	←		4	
9	COMPRESSOR				1	#
10	SWITCH P RELAY AS				1	#
11	RELAY BAND	3816100100	←	SK-5 T0.7	1	
12	SPECIAL WASHER	3016002500	←	SK-5 T0.8	4	
13	DRYER AS				1	#
14	ASSY R* S LUVR * L	3010028804	3010028814		1	
15	ASSY R* S LUVR * R	3010028822	3010028832		1	
15-1	SENSOR R1 AS	3014701140	←		1	
16	DUCT CHILD AS	3010029532	3011128931		1	
16-1	SOCKET R LAMP AS	3017900860	←	250V/1A	1	
17	SCREW TAPPING	7112401611	←	T2 TRS 4 x 16 MFZN	3	
18	LAMP AS				2	#
19	WINDOW R	3015501600	3015500800	GPPS	1	
20	SWITCH DR	3018100020	←	2BUTTON/4PIN	1	
21	CASE DEO AS	3011101800	←		1	
21-1	CASE DEO AS	3011102501	←	PP	1	
21-2	DEODORANT	3018700600	←		1	
21-3	SEALING DEO	3017714600	←	F-US	1	
21-4	DEODERANT SHEET	3018700700	←		1	
22	HINGE * M AS	3012904800	←	SCP-1 T3.21	1	
23	SPECIAL BOLT * M	3016001220	←	6B-1 6 x 20	3	
24	COVER * M HI	3014424700	←	ABS	1	
25	MOTOR F AS				1	
25-1	FAN	3011800400	←	ABS (Ø110mm)	1	
25-2	MOUSE BELL	3018500100	←	HIPS	1	
25-3	COVER MOTOR C	4017232233	←	HIPS	1	
25-4	ABSORBER MOTOR	4017208430	←	EPR-B3(H40)	1	
25-5	MOTOR F				1	#
25-6	COVER MOTOR B	4017232244	←	HIPS	1	
25-7	FIXTURE FAN	4004Q10060	←	STS27	1	
26	SCREW TAPPING	7112401611	←	T2S TRS 4 x 16 MFZN	2	
27	MOTOR R AS				1	
27-1	MOTOR R				1	#
28	SCREW TAPPING	7112401611	←	T2S TRS 4 x 16 MFZN	2	

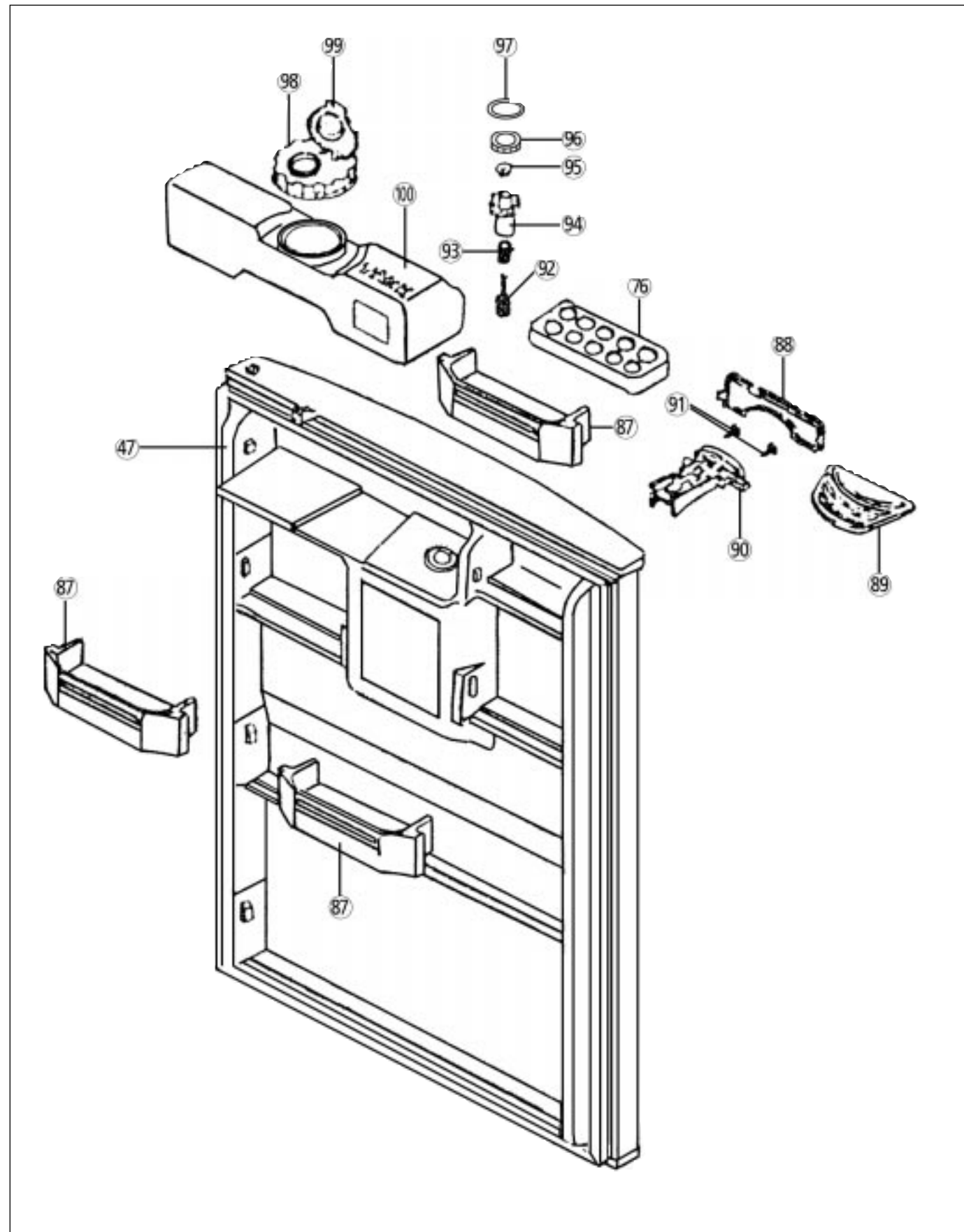
NO	PART NAME	PART CODE		DESCRIPTION	Q'ty	REMARK
		FR-581NT	FR-661NT			
29	COVER F M/F DUCT A	3011406600	3011414300	ABS	1	
29-1	SOCKET * F LAMP AS	3017900820	←	250V/1A	1	
29-2	LAMP AS				1	#
30	SCREW TAPPING	7112401611	←	T1 TRS 4 x 12 MFZN	2	
31	WINDOW F	3015500400	←	GPPS	1	
32	BRACKET F SENS	4017229010	←	SCP-1 T3.2	1	
33	INSULATOR F LOUVER AS	3013321400	←	F-PS	1	
34	LOUVER F AS	3018903400	←	PP	1	
35	ASSY * U HI	3010010700	←		1	
35-1	WASHER PLAIN	7400108511	←	PW-1-8.5	1	
36	SPECIAL BOLT	3016001201	←	6B-1 6 x 20	4	
37	HINGE * T AS	3012904700	←		1	
38	SPECIAL BOLT T/U	3016001230	←	6B-1 6 x 20	4	
39	COVER * T HI	3011432900	←	PP	1	
40	BOX M/PCB	3010511700	←	PP	1	
41	TRANS POWER				1	#
42	CAPACITOR				1	#
43	PCB MAIN AS				1	#
44	SCREW TAPPING	7112401211	←	T1 TRS 4 x 12 MFZN	3	
45	COVER M/PCB BOX	3011425300	←	PP	1	
46	COVER CUBIC/C	3011424400	←	ABS	4	
47	ASSY R DR TOTAL				1	#
48	GASKET R DR AS	3012305000	←	PVC+MAGNET	1	
49	HANDLE R DR	3012605100	←	ABS+CR	1	
50	SCREW TAPPING	7112401611	←	T2S TRS 4 x 16 MFZN	3	
51	DECORATOR R DR HANDLE	3011601800	←	ABS	1	
52	POCKET SM	3019002301	←	GP	2	
53	POCKET JUMBO	3018000500	←	GP	1	
54	POCKET M	3019000901	←	GP	1	
55	ASSY F DR TOTAL				1	#
56	GASKET F DR AS	3012304800	←	PVC+MAGNET	1	
57	HANDEL F DR	3012605000	←	ABS+CR	1	
58	SCREW TAPPING	7112401611	←	T2S TRS 4 x 16 MFZN	3	
59	DECORATOR F DR HANDLE	3011601700	←	ABS	1	
60	PANEL F * T	3014203600			1	
60-1	PANEL F CONTROL	3014203500	←		1	
60-2	PCB * F AS	3014351110			1	
60-3	SCREW TAPPITE	7173301011	←	TT2 BIN 3 x 10 MFZN	1	
60-4	BUTTON FCP	3016300700	←	ABS+CR	2	
61	SCREW TAPPING	7125401213	←	T2S FLT 4 x 16 MFCR	2	
62	PLATE FCP NAME	3014512100	←	PC-FILM T0.5	1	
63	PLATE NAME TANK	3014512500	←	ABS+CR	1	
64	CASE VEGETB A	3011104500	←	SAN	1	
65	CASE VEGETB B	3011101300	←	SAN	1	
66	POCKET F * T	3019001801	←	GP	2	
67	SUPOTR VEGETB COVER	3015301003	←	SAN	1	
68	COVER V/CASE	3011407001	3011404701	SAN	1	
69	SHELF R AS	3010051200	3010051100	SAN	2	

NO	PART NAME	PART CODE		DESCRIPTION	Q'ty	REMARK
		FR-581NT	FR-661NT			
70	CASE CHILD	3011105200	←	SAN	1	
71	DOOR CHILD CASE	3011716700	←	SAN	1	
72	SHELF F	3017808300	3017808400	SAN	1	
73	GUIDE ICING	3011403600	3012504300	HIPS	1	
74	CASE ICING	3011106100	←	PP	2	
75	BOX ICE CASE	4010E99100	←		1	
76	CASE EGG	3011107900	←	SAN	2	
77	CORD POWER AS				1	#
78	SCREW TAPPING	7112401211	←	T1 TRS 4 x 12 MFZN	1	
79	GRILLE	3012400100	3012400600		1	
80	SCREW TAPPING	7112401211	←	T1 TRS 4 x 12 MFZN	5	
81	FOOT ADJ AS	3012100400	←	PP	2	
82	COVER CAB BRKT	3011425100	←	PP	1	
83	SCREW TAPPING	7112401211	←	T1 TRS 4 x 12 MFZN	2	
84	EVAPORATOR	3017000923	←		1	
85	FUSE TEMP AS	3017200101	←	SW-103T (77°C)	1	
86	ASSY D HTR				1	
86-1	HEATER D AS				1	#
86-2	COVER HTR * T	3011408201	←	AL 1200P-H24 T0.4	1	
86-3	COVER HTR * U	3011408100	←	AL 1200P-H24 T0.4	1	

5. FR-581NW

5-1. EXPLODED VIEW & PART LIST

1. Exploded views



2. PART LIST

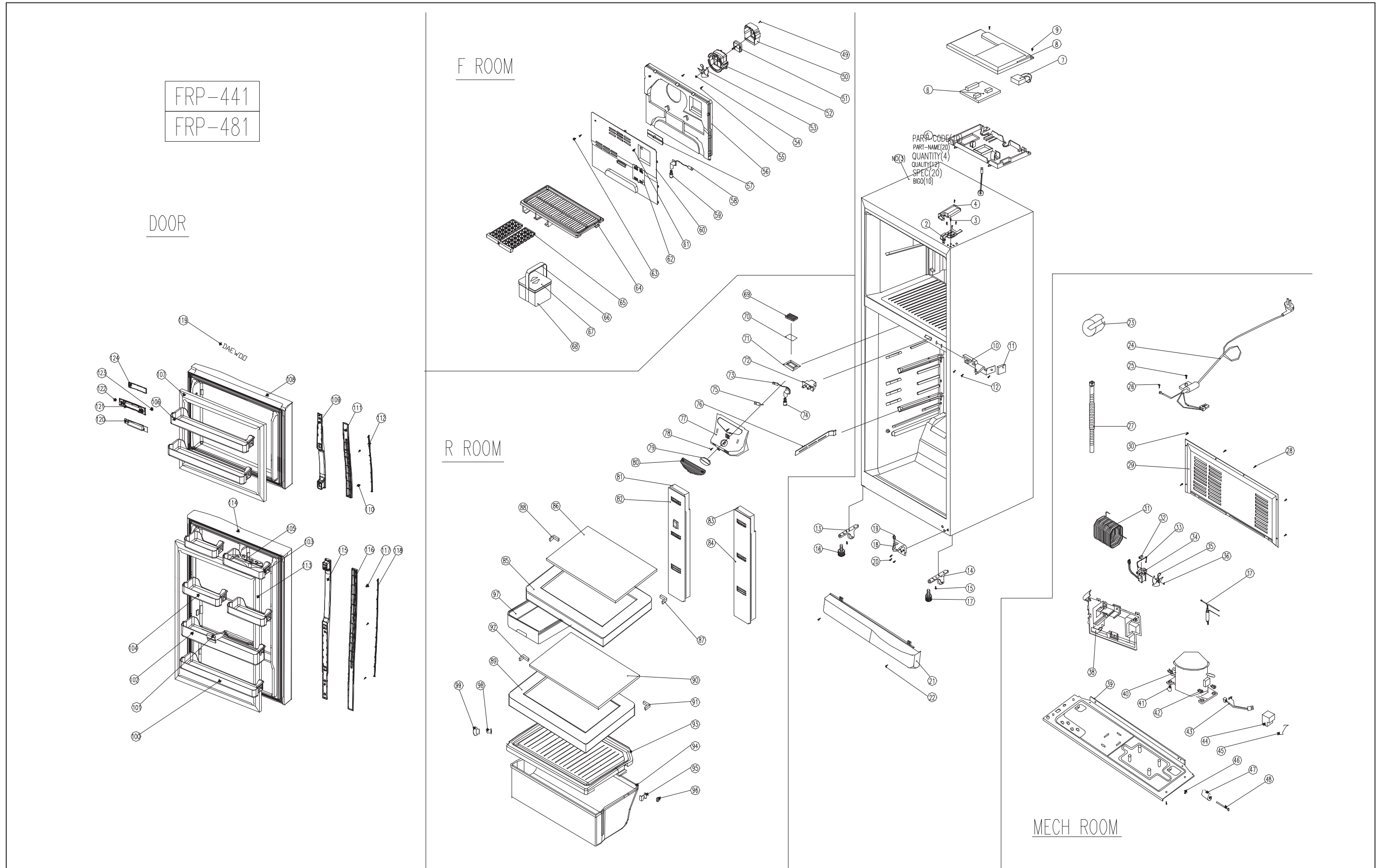
NO	PART NAME	PART CODE		DESCRIPTION	Q'ty	REMARK
		FR-581NW	FR-661NW			
16	DUCT CHILD AS	3010054901	3010054910		1	
47	ASSY R DR TOTAL				1	#
76	CASE EGG	3011107410	←	SAN	2	
87	POCKET EGG	3019005110	←	GP	3	
88	WINDOW W/D AS	3015502400	←		1	
89	COVER WATER ACEPT	3011412910	←	ABS+GOLD	1	
90	FIXTURE LEVER AS	3012003600	←		1	
91	SCREW TAPPING	7112401311	←	MFZN	2	
92	SHAFT OUTLET	3014900600	←	ABS	1	
93	SPRING DISPENSER	3015100100	←	SUS 304 · 0.9	1	
94	CAP OUTLET	3010922700	←	ABS	1	
95	PACKING W/TANK	3014001500	←	SILICON	1	
96	PACKING CAP A	3014001000	←	SILICON	1	
97	PACKING CAP B	3014001010	←	SILICON	1	
98	CAP W/TANK A	3010914100	←	ABS	1	
99	CAP W/TANK B	3010914200	←	ABS	1	
100	TANK W/D	30182002100	←	PE	1	

¥All other parts except the above part list are same as 581NT and 661NT.

The exploded view may be a little different in shapes from the NT type standard type.

6. FR-530_590NT

6-1. EXPLODED VIEW



6-2. PART LIST

1) FR-530_590NT(# : Refer to PPL in <http://svc.dwe.co.kr>)

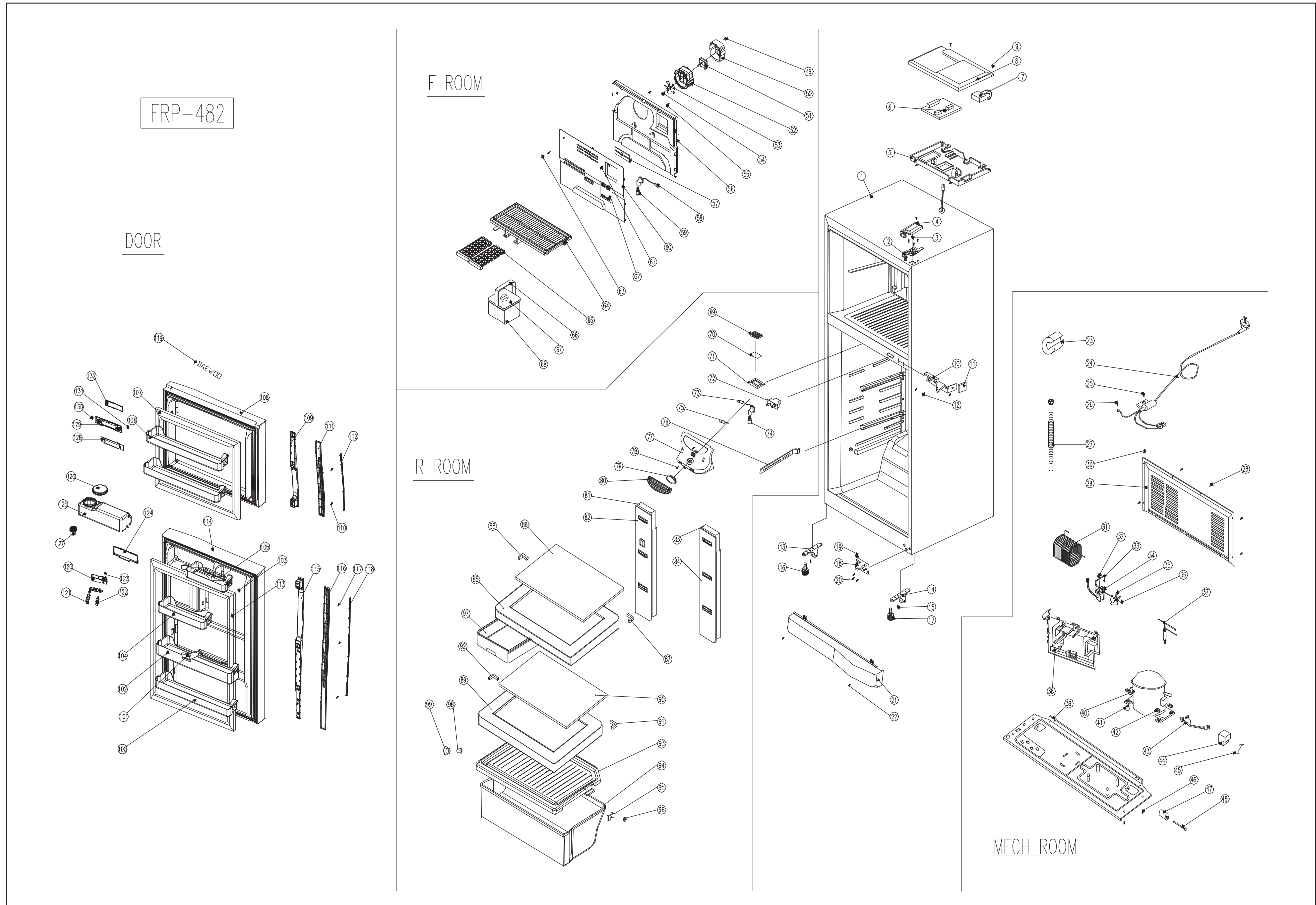
NO	PART CODE	PART NAME	PART DESCRIPTION	QUANTITY	REMARK
1	3000015000	ASSY CAB URT	FRP-441	1	
	3000015100	ASSY CAB URT	FRP-481	1	
2	3012905400	HINGE *T	"SCP1, T2.3"	1	
3	3016001240	SPECIAL BOLT *T	6X 22 SWCH22A(YL)	5	
4	3011429000	COVER *T HI	PP	1	
5	3010519200	BOX M/PCB	PP	1	
6	3014392000	PCB MAIN AS		1	
7	3016401910	CAPACITOR RUNNING	400VAC 4UF(WIRE)	1	
8	3011444901	COVER MAIN PCB BOX	PP	1	
9	7112401611	SCREW TAPPING	T1 TRS 4X16 MFZN	2	
10	3012905802	HINGE *M AS	PO T3.2	1	
11	3011424700	COVER *M HINGE	ABS	1	
12	3016001220	SPECIAL BOLT *M	6X20 SWCH22A(WH)	3	
13	3012102901	FOOT *F *L AS		1	
14	3012103001	FOOT *F *R AS		1	
15	3016000700	SPECIAL SCREW	M6X15	2	
16	3012101501	FOOT ADJ *R AS		1	
17	3012102501	FOOT ADJ *L AS		1	
18	3012906400	HINGE *U AS		1	
19	3016005300	SPECIAL WASHER	S10C T1.5	1	
20	3016001240	SPECIAL BOLT T/U	6X22SWCH22A(YL)	3	
21	3011470100	COVER CABINET BRACKET	PP	1	
22	7112401611	SCREW TAPPING	T1 TRS 4X16 MFZN	2	
23	3010101340	ABSORBER SUCTION PIPE	NR	3	
24	3011302030	CORD POWER AS	CP-2PIN(2)	1	
25	7112401211	SCREW TAPPING	T1 TRS 4X12 MFZN	1	
26	7001400865	SCREW MACHINE	PAN 4X8 BSNI	1	
27	3013202700	HOSE DRAIN B	PP	1	
28	7112401211	SCREW TAPPING	T1 TRS 4X12 MFZN	6	
29	3012401410	GRILLE	SBHGI T0.4	1	
30	7112401211	SCREW TAPPING	T1 TRS 4X12 MFZN	2	
31	3014423900	PIPE WICON AS	FRB-48/52/5640NT	1	
32	3010102100	ABSORBER C MOTOR	NR	1	
33	3012004400	FIXTURE C MOTOR	SUC	1	
34	3015905021	MOTOR C	230V / 50Hz	1	
35	3011802200	FAN		1	
36	3011200500	CLAMP FAN	SUS304	1	
37	3016801010	DRYER AS	FRB-4460NT/4760NT	1	
38	3011118000	CASE VAPORI		1	
39	3010314910	BASE COMPRESSOR	SBHGI T1.0	1	
40	3956126550	COMPRESSOR	HPL26YH-5 240V-50HZ	1	
41	3010101440	ABSORBER COMP AS		4	
42	3016002500	SPECIAL WAHER	SK-5 T0.8	4	
43	3018119920	SWITCH P-RELAY AS	"4TM197NHBY-52(3P.S330)"	1	
44	3811400503	COVER RELAY	V235	1	
45	3012610000	CLAMP BAND RELAY	SK-5 T0.7	1	
46	3016003300	SPECIAL BOLT	T2 M6.5X20	4	
47	3016500000	CASTER *B	PP	2	
48	3014902900	SHAFT CASTER *B	SWRM-10	2	
49	7112401211	SCREW TAPPING	T1 TRS 4X12 MFZN	1	
50	3012007901	FIXTURE MOTOR B	PP	1	
51	3015907200	MOTOR F	BLDL 12V	1	
52	3012007800	FIXTURE MOTOR A	PP	1	
53	3011802200	FAN	ABS(OD110)	1	
54	3011200500	CLAMP FAN	SUS 304	1	

NO	PART CODE	PART NAME	PART DESCRIPTION	QUANTITY	REMARK
55	7112401611	SCREW TAPPING	T1 TRS 4X12 MFZN	2	
56	3013334112	INSULATOR F-LUVR	F-PS	1	
57	3013402110	KNOB F CONTROL	PP	1	
58	3017903422	SOCKET F LAMP AS		1	
59	3013600020	LAMP AS	240 [V] / 15[W]	1	
60	3018908210	LOUVER F	HIPS	1	
61	7112401611	SCREW TAPPING	T1 TRS 4X16 MFZN	2	
62	3015504201	WINDOW F	GPPS	1	
63	3010924600	CAP F-LOUVER	HIPS T2.3	1	
64	3017807500	SHELF F	HIPS	1	
65	3011110200	CASE ICING	PP	2	
66	3012603401	HANDLE ICE BOX	ABS	1	
67	3011445501	COVER ICE-BOX	GPPS	1	
68	3010519600	BOX ICE	HIPS	1	
69	3018701300	DEODORANT ANTI RETURN		1	
70	3018700700	DEODORANT SHEET	UNITRON	1	
71	3011102501	CASE DEODORANT A	PP	1	
72	3018100010	SWITCH DOOR	2 BUTTON / 4 PIN	1	
73	3017903300	SOCKET R LAMP AS		1	
74	3013600020	LAMP AS	240V 15W	1	
75	3014802300	SENSOR R AS		1	
76	3011439500	COVER CUBIC/D	HIPS	4	
77	3011445000	COVER CONTROL	HIPS	1	
78	7112401611	SCREW TAPPING	T1 TRS 4X16 MFZN	1	
79	3010918400	CAP CONTROL BOX	ABS	1	
80	3015504001	WINDOW R	GPPS	1	
81	3013331100	INSULATOR R *S *L	"F-PS, FRP-441"	1	
	3013330900	INSULATOR R *S *L	"F-PS, FRP-481"	1	
82	3018906300	LOUVER R *S *L	"PP, FRP-441"	1	
	3018902500	LOUVER R *S *L	"PP, FRP-481"	1	
83	3013331100	INSULATOR R *S *R	"F-PS, FRP-441"	1	
	3013331000	INSULATOR R *S *R	"F-PS, FRP-481"	1	
84	3018906400	LOUVER R *S *R	"PP, FRP-441"	1	
	3018902600	LOUVER R *S *R	"PP, FRP-481"	1	
85	3017802340	SHELF R *T	HIPS	1	
86	3014547710	PALTE SHELF GLASS	GALSS(T0.4X595.3X369.4)	1	
87	3012017000	FIXTURE GLASS SHELF R	HIPS	1	
88	3012016000	FIXTURE GLASS SHELF L	HIPS	1	
89	3017805101	SLELF R *U	GPPS	1	
90	3014547710	PALTE SHELF GLASS	GALSS(T0.4X595.3X369.4)	1	
91	3012017000	FIXTURE GLASS SHELF R	HIPS	1	
92	3012016000	FIXTURE GLASS SHELF L	HIPS	1	
93	3011439701	COVER VEGETABLE CASE	GPPS	1	
94	3011117700	CASE VEGETABLE	GPPS	1	
95	3011432800	COVER ROLL A	HIPS	2	
96	3014700500	ROLLER VEGETABLE CASE	POM	2	
97	3011117811	CASE CHILLED	GPPS	1	
98	3014700600	ROLLER V/CASE FIXTURE	POM	2	
99	3015303600	SUPPORTER V/CASE BOX	GPPS	2	
100	3019018810	POCKET R DOOR *U	GPPS	1	
101	3012513000	GUIDE JUMBO POCKET	GPPS	1	
102	3019018710	POCKET JUMBO	GPPS	1	
103	3019018510	POCKET EGG	GPPS	2	
104	3019018610	POCKET MULTI	GPPS	2	
105	3011107411	CASE EGG	GPPS	1	

NO	PART CODE	PART NAME	PART DESCRIPTION	QUANTITY	REMARK
106	3019018410	POCKET F DOOR	GPPS	2	
107	3012301400	GASKET F DOOR AS	PVC	1	
108	3011751510	DOOR F URT AS	FRP-441	1	
	3011795510	DOOR F URT AS	FRP-481	1	
109	3012628300	HANDLE F DOOR	FR-B442BB	1	
110	7002501611	SCREW MACHINE	TRS 5X16 MFZN	2	
111	3011613400	DECORATOR F HANDLE A	FR-B442BB	1	
112	3011613500	DECORATOR F HANDLE B	ABS+CR	1	
113	3012301700	GASKET R DOOR AS		1	
114	3011751920	DOOR R URT AS	FRP-441	1	
	3011752110	DOOR R URT AS	FRP-481	1	
115	3012628400	HANDLE R DOOR	FR-B442BB	1	
116	7002501611	SCREW MACHINE	TRS 5X16 MFZN	3	
117	3011613600	DECORATOR R HANDLE A	ABS	1	
118	3011613700	DECORATOR R HANDLE B	ABS + CR	1	
119		EMBLEM DAEWOO		1	
120	3014393000	PCB FRONT AS		1	
121	3014232100	PANEL FCP	ABS	1	
122	3016302900	BUTTON FCP *L	ABS	1	
123	3016303000	BUTTON FCP *R	ABS	1	
124	3015504600	WINDOW FCP	ABS + INSERT	1	

7. FR-590NW

7-1. EXPLODED VIEW



7-2. PART LIST

1) FR-590NW (# : Refer to PPL in <http://svc.dwe.co.kr>)

NO	PART CODE	PART NAME	PART DESCRIPTION	QUANTITY	REMARK
1	3000015100	ASSY CAB URT	FRP-481	1	
2	3012905400	HINGE *T	"SCP1, T2.3"	1	
3	3016001240	SPECIAL BOLT *T	6 X 22 SWCH22A(YL)	5	
4	3011429000	COVER *T HI	PP	1	
5	3010519200	BOX MAIN PCB	PP	1	
6	3014392000	PCB MAIN AS		1	
7	3016401910	CAPACITOR RUNNING	400VAC 4UF(WIRE)	1	
8	3011444901	COVER MAIN PCB BOX	PP	1	
9	7112401611	SCREW TAPPING	T1 TRS 4X16 MFZN	2	
10	3012905802	HINGE *M AS	PO T3.2	1	
11	3011424700	COVER *M HINGE	ABS	1	
12	3016001220	SPECIAL BOLT *M	6X20 SWCH22A(WH)	3	
13	3012102901	FOOT *F *L AS		1	
14	3012103001	FOOT *F *R AS		1	
15	3016000700	SPECIAL SCREW	M6X15	2	
16	3012101501	FOOT ADJ *R AS		1	
17	3012102501	FOOT ADJ *L AS		1	
18	3012906400	HINGE *U AS		1	
19	3016005300	SPECIAL WASHER	S10C T1.5	1	
20	3016001240	SPECIAL BOLT T/U	6X22SWCH22A(YL)	3	
21	3011470100	COVER CABINET BRACKET	PP	1	
22	7112401611	SCREW TAPPING	T1 TRS 4X16 MFZN	2	
23	3010101340	ABSORBER SUCTION PIPE	NR	3	
24	3010101340	CORD POWER AS	CP-2PIN(2)	1	
25	7112401211	SCREW TAPPING	T1 TRS 4X12 MFZN	1	
26	7001400865	SCREW MACHINE	PAN 4X8 BSNI	1	
27	3013202700	HOSE DRAIN B	PP	1	
28	7112401211	SCREW TAPPING	T1 TRS 4X12 MFZN	6	
29	3012401410	GRILLE	SBHGI T0.4	1	
30	7112401211	SCREW TAPPING	T1 TRS 4X12 MFZN	2	
31	3014423900	PIPE WICON AS	FLTT SW D4.76	1	
32	3010102100	ABSORBER C MOTOR	NR	1	
33	3012004400	FIXTURE C MOTOR	SUC	1	
34	3015905021	MOTOR C	230V/50HZ(RT 3.17)	1	
35	3011802200	FAN		1	
36	3011200500	CLAMP FAN	SUS304	1	
37	3016801010	DRYER AS	FRB-4460NT/4760NT	1	
38	3011118000	CASE VAPORI		1	
39	3010314910	BASE COMPRESSOR	SBHGI T1.0	1	
40	3956126550	COMPRESSOR	HPL26YH-5 240V-50HZ	1	
41	3010101440	ABSORBER COMP AS		4	
42	3016002500	SPECIAL WAHER	SK-5 T0.8	4	
43	3018116610	SWITCH P-RELAY AS	"4TM197NHBY-52(3P,S330)"	1	
44	3811400503	COVER RELAY	V235		
45	3012610000	CLAMP BAND RELAY	SK-5 T0.7	1	
46	3016003300	SPECIAL BOLT	T2 M6.5X20	4	
47	3016500000	CASTER *B	PP	2	
48	3014902900	SHAFT CASTER *B	SWRM-10	2	
49	7112401211	SCREW TAPPING	T1 TRS 4X12 MFZN	1	
50	3012007901	FIXTURE MOTOR B	PP	1	
51	3015907200	MOTOR F	BLDL 12V	1	
52	3012007800	FIXTURE MOTOR A	PP	1	
53	3011802200	FAN	ABS(OD110)	1	
54	3011200500	CLAMP FAN	SUS 304	1	
55	7112401611	SCREW TAPPING	T1 TRS 4X12 MFZN	2	

NO	PART CODE	PART NAME	PART DESCRIPTION	QUANTITY	REMARK
56	3013334110	INSULATOR F-LUVR	F-PS	1	
57	3013402110	KNOB CONTROL	PP	1	
58	3017903422	SOCKET F LAMP AS		1	
59	3013600020	LAMP AS	240 [V] / 15[W]	1	
60	3018908210	LOUVER F	HIPS	1	
61	7112401611	SCREW TAPPING	T1 TRS 4X16 MFZN	2	
62	3015504201	WINDOW F	GPPS	1	
63	3010924600	CAP F-LOUVER	HIPS T2.3	1	
64	3017807500	SHELF F	HIPS	1	
65	3011110200	CASE ICING	PP	2	
66	3012603401	HANDLE ICE BOX	ABS	1	
67	3011445501	COVER ICE-BOX	GPPS	1	
68	3010519600	BOX ICE	HIPS	1	
69	3018701300	DEODORANT ANTI RETURN		1	
70	3018700700	DEODORANT SHEET	UNITRON	1	
71	3011102501	CASE DEODORANT A	PP	1	
72	3018100010	SWITCH DOOR	2 BUTTON / 4 PIN	1	
73	3017903300	SOCKET R LAMP AS		1	
74	3013600020	LAMP AS	240V 15W	1	
75	30143802300	SENSOR R AS	FRP-481	1	
76	3011439500	COVER CUBIC/D	HIPS	4	
77	3011445000	COVER CONTROL	HIPS	1	
78	7112401611	SCREW TAPPING	T1 TRS 4X16 MFZN	1	
79	3010918400	CAP CONTROL BOX	ABS	1	
80	3015504001	WINDOW R	GPPS	1	
81	3013330900	INSULATOR R *S *L	"F-PS, FRP-481"	1	
82	3018902500	LOUVER R *S *L	"PP, FRP-481"	1	
83	3013331000	INSULATOR R *S *R	"F-PS, FRP-481"	1	
84	3018902600	LOUVER R *S *R	"PP, FRP-481"	1	
85	3017802340	SHELF R *T	HIPS	1	
86	3014547710	PALTE SHELF GLASS	GALSS(T0.4X595.3X369.4)	1	
87	3012017000	FIXTURE GLASS SHELF R	HIPS	1	
88	3012016000	FIXTURE GLASS SHELF L	HIPS	1	
89	3017805101	SLELF R *U	GPPS	1	
90	3014547710	PALTE SHELF GLASS	GALSS(T0.4X595.3X369.4)	1	
91	3012017000	FIXTURE GLASS SHELF R	HIPS	1	
92	3012016000	FIXTURE GLASS SHELF L	HIPS	1	
93	3011439701	COVER VEGETABLE CASE	GPPS	1	
94	3011117700	CASE VEGETABLE	GPPS	1	
95	3011432800	COVER ROLL A	HIPS	2	
96	3014700500	ROLLER VEGETABLE CASE	POM	2	
97	3011117811	CASE CHILLED	GPPS	1	
98	3014700600	ROLLER V/CASE FIXTURE	POM	2	
99	3015303600	SUPPORTER V/CASE BOX	GPPS	2	
100	3019018810	POCKET R DOOR *U	GPPS	1	
101	3012513000	GUIDE JUMBO POCKET	GPPS	1	
102	3019018710	POCKET JUMBO	GPPS	1	
103	3019018510	POCKET EGG	GPPS	1	
104	3019018610	POCKET MULTI	GPPS	1	
105	3011107411	CASE EGG	GPPS	1	
106	3019018410	POCKET F DOOR	GPPS	2	
107	3012301400	GASKET F DOOR AS	PVC	1	
108	3011795000	DOOR F URT AS	FRP-482	1	
109	3012628300	HANDLE F DOOR	FR-B442BB	1	
110	7002501611	SCREW MACHINE	TRS 5X16 MFZN	2	

NO	PART CODE	PART NAME	PART DESCRIPTION	QUANTITY	REMARK
111	3011613400	DECORATOR F HANDLE A	FR-B442BB	1	
112	3011613500	DECORATOR F HANDLE B	ABS+CR	1	
113	3012301700	GASKET R DOOR AS	PVC	1	
114	3011792900	DOOR R URT AS	FRP-441	1	
115	3012628400	HANDLE R DOOR	FR-B442BB	1	
116	7002501611	SCREW MACHINE	TRS 5X16 MFZN	3	
117	3011613600	DECORATOR R HANDLE A	ABS	1	
118	3011613700	DECORATOR R HANDLE B	ABS + CR	1	
119		EMBLEM DAEWOO		1	
120	3012014500	FIXTURE LEVER	ABS	1	
121	3013701000	LEVER WATER DISPENSER	ABS + CR		
122	3011475400	COVER LEVER	SILICON RUBBER	1	
123	3015100700	SPRING LEVER	FRB-4840NW	1	
124	3014232000	PANEL WATER DISPENSER	ABS	1	
125	3018200500	TANK WATER		1	
126	3010914101	CAP TANK A	FRP-4840NW	1	
127	3010822800	CAP OUTLET AS	FRP-4840NW	1	
128	3014393000	PCB FRONT AS		1	
129	3014232100	PANEL FCP	ABS	1	
130	3016302900	BUTTON FCP *L	ABS	1	
131	3016303000	BUTTON FCP *R	ABS	1	
132	3015504600	WINDOW FCP	ABS + INSERT	1	