



# WASHING MACHINE **SERVICE MANUAL**

## **CAUTION**

READ THIS MANUAL CAREFULLY TO DIAGNOSE TROUBLES  
CORRECTLY BEFORE OFFERING SERVICE.

**MODEL : F1268\*FDS**



PRINTED IN KOREA

P/No.:MFL30574747

---

# CONTENTS

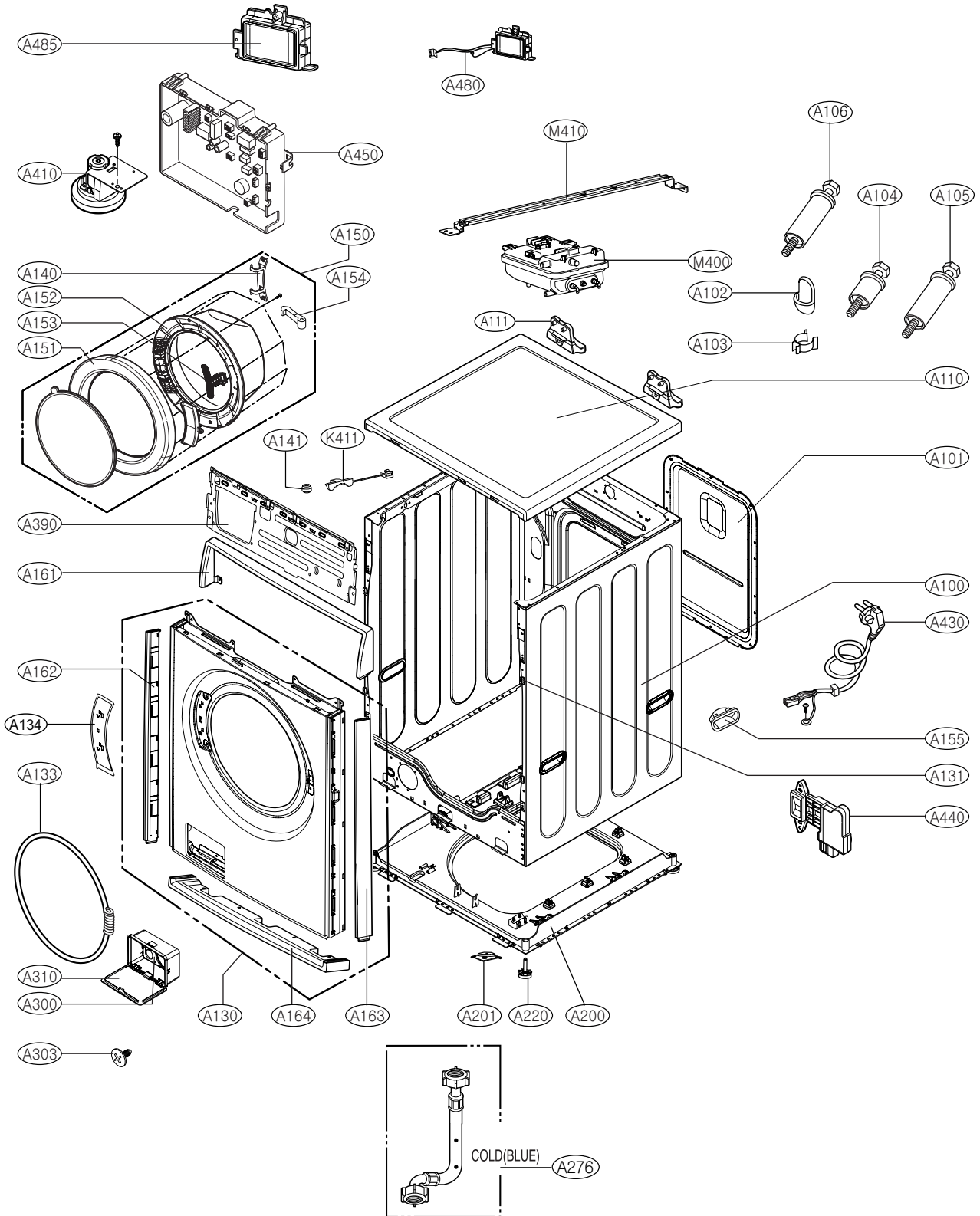
1. SPECIFICATION.....	3
2. FEATURES & TECHNICAL EXPLANATION .....	4
3. PARTS IDENTIFICATION .....	7
4. INSTALLATION.....	8
5. WIRING DIAGRAM / PROGRAM CHART .....	11
6. OPERATION .....	12
7. TROUBLE SHOOTING.....	14
7-1.BEFORE SVC CHECKING .....	14
7-2.QC TEST MODE.....	14
7-3.HOW TO KNOW THE WATER LEVEL FREQUENCY.....	14
7-4.ERROR DISPLAY .....	15
8. ERROR DIAGNOSIS AND CHECK LIST .....	17
8-1. DIAGNOSIS AND ANSWER FOR ABNORMAL OPERATION .....	17
8-2. FAULT DIAGNOSIS AND TROUBLE SHOOTING .....	20
9. DISASSEMBLY INSTRUCTIONS .....	30
10. EXPLODED VIEW AND PARTS LIST .....	40
10-1. THE EXPLODED VIEW OF CABINET ASSEMBLY .....	40
10-2. THE EXPLODED VIEW OF DRUM AND TUB ASSEMBLY .....	41
10-3. THE EXPLODED VIEW OF CONTROL PANEL AND DISPENSER ASSEMBLY .....	42
10-4. THE EXPLODED VIEW OF DRYER .....	43

# 1. SPECIFICATION

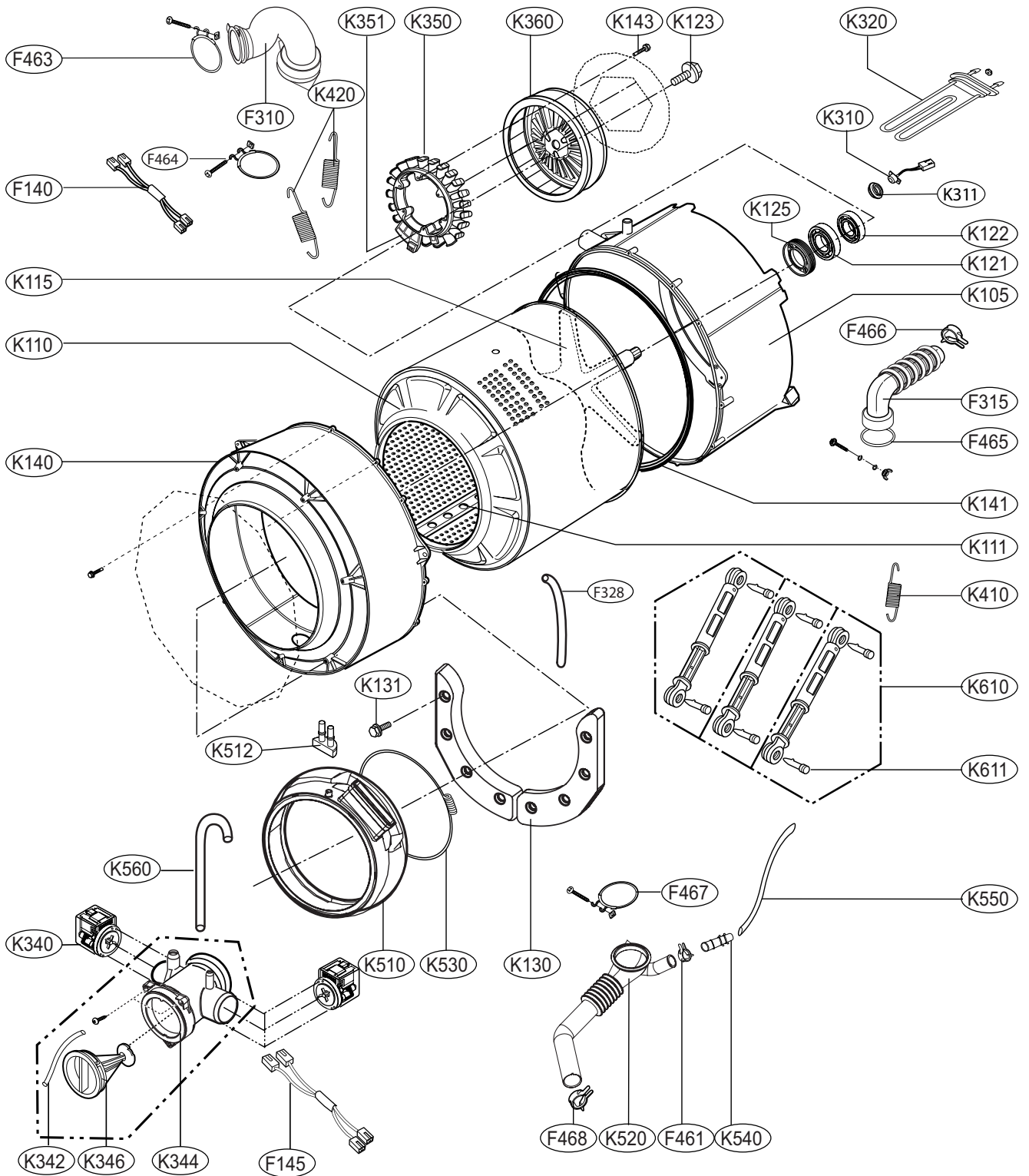
ITEM		F1268*FDS
POWER SUPPLY		220V a.c 50Hz
PRODUCT WEIGHT		76kg
ELECTRICITY CONSUMPTION	WASHING	200W
	SPIN	300W
	FAN MOTOR	25W
	DRAIN MOTOR	35W
	WASH HEATER	2200W
REVOLUTION SPEED	WASH	46rpm
	SPIN	400/600/800/1000/1200
OPERATION WATER PRESSURE		0.3-10kgf/cm(30-1000kPa)
CONTROL TYPE		Electronic
WASH CAPACITY		12kg
DIMENSION		635mm(W) x 740mm(D)x 925mm(H)
WASH PROGRAM		Cotton, Sanitary, Wrinkle Care, Quiet, Quick, Wool, Blanket, Rinse+spin, Tub Clean
RINSE		1/2/3/4/5
DOOR SWITCH TYPE		PTC+Solenoid Type
WATER LEVEL		10 steps (by sensor)
RESERVATION		From 3 hours to 19 hours
SENSING OF THE LAUNDRY AMOUNT		Adapted
FUZZY LOGIC		Adapted
DISPLAY OF THE REMAINING TIME		Adapted
ERROR DIAGNOSIS		10 items
POWER AUTO OFF		Adapted
CHILD LOCK		Adapted
AUTO RESTART		Adapted
TIME SAVE		Adapted
TURBO STEAM		Adapted

# 10. EXPLODED VIEW AND PART LIST

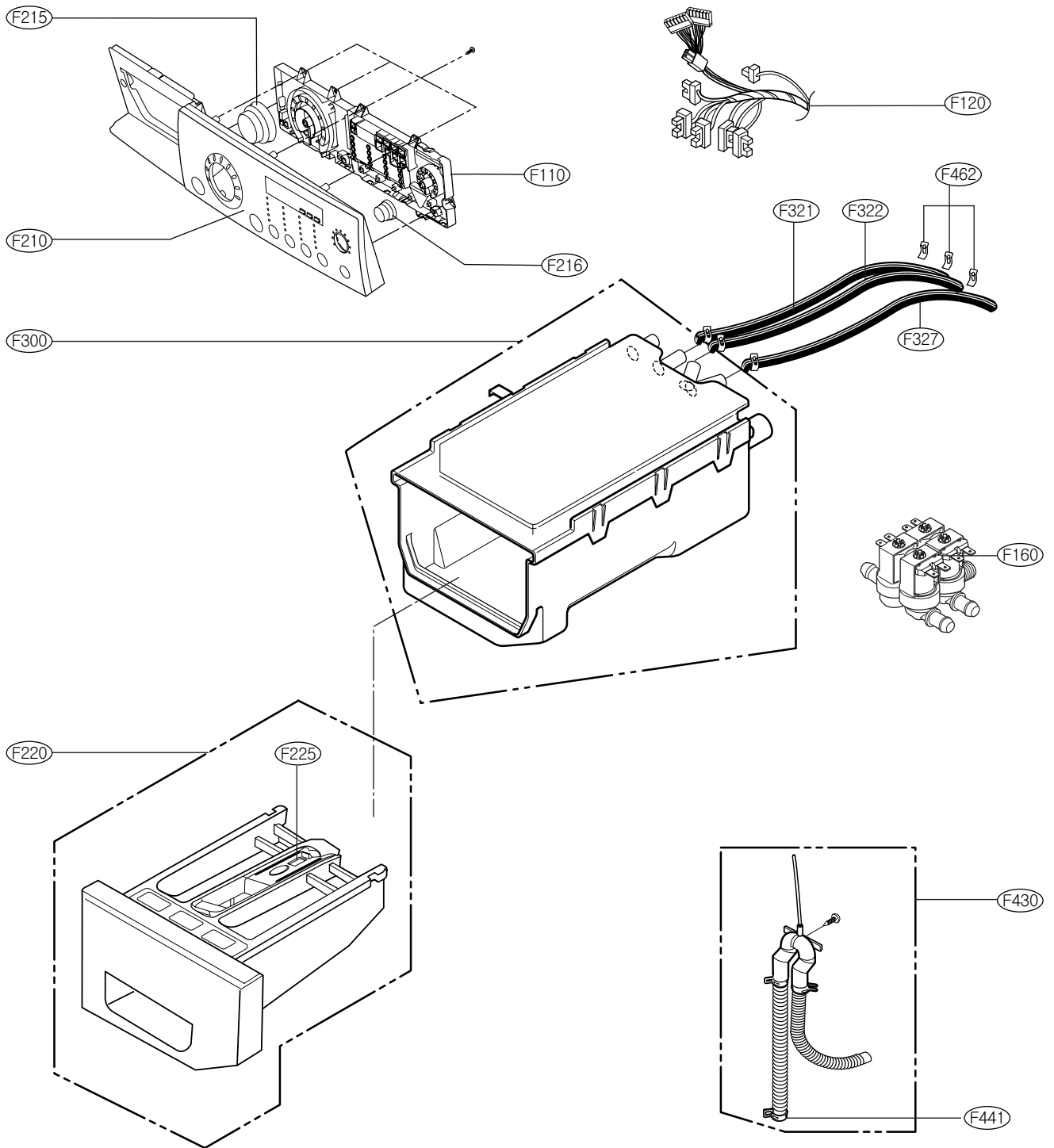
## 10-1.CABINET ASSEMBLY



## 10-2. DRUM & TUB ASSEMBLY



# 10-3. CONTROL PANEL AND DISPENSER ASSEMBLY



Non	Réf Pièce	Description(Local)	Loc No
1	1SZZER4002A	SCREW,DRAWING	K131
2	3041ER0002E	Base Assembly,Cabinet	A200
3	3045ER0020K	Tub Assembly,Outer	K105
4	3045ER0021B	TUB ASSEMBLY,INNER[DRUM]	K110
5	3091ER0005Y	Cabinet Assembly	A100
6	3108ER1001A	CASING,PUMP	K344
7	3110ER2011C	CASE	A300
8	3111ER1001C	CASE ASSEMBLY	M400
9	3210ER1318B	FRAME,BODY	M410
10	3211ER1005A	FRAME ASSEMBLY	A390
11	3212ER1020A	DOOR FRAME,OUTER	A151
12	3212ER1021A	DOOR FRAME,INNER	A152
13	3457ER1007E	TOP PLATE ASSEMBLY	A110
14	3504FR3134A	CHAMBER,AIR	K540
15	3550ER0037D	Cover,Cabinet	A130
16	3550ER1028A	COVER,BACK	A101
17	3551ER0009K	Cover Assembly,Tub	K140
18	3581ER0002N	DOOR ASSEMBLY	A150
19	3650ER3003B	HANDLE	A153
20	3650FA3488P	HANDLE	A155
21	3806ER1307B	DECO,SIDE	A162
22	3806ER1308B	DECO,SIDE	A163
23	3806ER1309B	DECO,PANEL	A161
24	3806ER1310B	DECO,FRAME	A164
25	383EER2001A	SERVICE PARTS	K346
26	383EER3001F	SERVICE PARTS	K610
27	3890EZ3528K	Box,Carton	*002
28	3W20018B	CLES DE REGLAGE -PIED	*003
29	3W40102P	HOSE ASSEMBLY,INLET	A276
30	4011FA4353B	BOLT,DRAWING	K143
31	4011FR3159D	BOLT ASSEMBLY	A105
32	4011FR3159E	BOLT ASSEMBLY	A104
33	4011FR3159J	Bolt Assembly	A106
34	4026ER4007A	LATCH,HOOK	A154
35	4036ER2003A	SEAL	K125
36	4036ER4001C	SEAL	K141
37	4036FR4050A	SEAL	K311
38	4040FR4051C	BOLT ASSY	K123
39	4280FR4048C	BEARING,BALL	K122
40	4280FR4048K	BEARING,BALL	K121
41	4413ER1002A	ROTOR ASSEMBLY	K360
42	4417EA1002F	Stator Assembly	K350
43	4432ER1006A	LIFTER	K111
44	4434ER0003A	SPIDER	K115
45	4681EA2002F	Motor Assembly,AC,Pump	K340
46	4738ER1006A	BELLOWS	K520
47	4738ER2001A	BELLOWS	F310
48	4738ER2002A	BELLOWS	F315
49	4774ER2015A	HINGE	A140
50	4774FR3118B	HINGE	K611
51	4810ER3016A	BRACKET,BASE	A201
52	4810ER4004A	Bracket,Hinge	A111
53	4830ER3001A	BUSHING	A102
54	4860FR3092C	CLAMP	F467
55	4860FR3092C	CLAMP	F464
56	4860FR3092D	CLAMP	F463
57	4860FR3092H	Clamp	F465
58	4861ER2001G	Clamp Assembly	K530
59	4861FR3068A	CLAMP	F462
60	4861FR3068C	CLAMP,HOSE	F441
61	4861FR3068C	CLAMP,HOSE	F461



62	4861FR3068E	CLAMP,HOSE	F468
63	4861FR3068M	Clamp	F466
64	4866ER0006A	BALANCE WEIGHT	K130
65	4925ER1020D	DISPENSER ASSEMBLY	F300
66	4930ER3014A	HOLDER	A103
67	4930ER4004A	HOLDER	A131
68	4930FR3040A	HOLDER	K411
69	4932ER3007A	Connector, Nozzle	K512
70	4940ER3021A	KNOB, ROTARY	F216
71	4941ER3002A	KNOB ASSEMBLY	F215
72	4970FR2084Q	SPRING, HINGE	K410
73	4970FR2084R	SPRING, HINGE	K420
74	4986ER0006E	Gasket	K510
75	5006ER2006D	Cap, Cover	A310
76	5006ER3009A	CAP, DRAIN HOSE	A303
77	5006ER3016B	Cap, Softener	F225
78	5214ER4001A	HOSE, INLET	F322
79	5214ER4001F	HOSE, INLET	K550
80	5214ER4001P	HOSE, INLET	F321
81	5214ER4001Q	HOSE, INLET	F327
82	5214FR4006L	HOSE, CONNECTOR	K342
83	5214FR4006S	Hose, Connector	F328
84	5214FR4006V	Hose, Connector	K560
85	5215ER2002F	HOSE ASSEMBLY, DRAIN	F430
86	5220FR2075E	Valve Assembly, Inlet	F160
87	5413FR4154L	Leg Assembly	A220
88	5874EC2004A	REACTOR	A480
89	6201EC1006N	Filter Assembly	A485
90	6322FR2046C	THERMISTOR, NTC	K310
91	6411ER1005T	POWER CORD ASSEMBLY	A430
92	6501KW2001A	SENSOR ASSEMBLY	K351
93	6601ER1006A	SWITCH ASSEMBLY, SENSOR SWITCH	A410
94	6601ER1007A	SWITCH ASSEMBLY, DOOR	A440
95	6877ER1028D	HARNESS, MOTOR	F140
96	6877ER3003A	HARNESS, MOTOR	F145
97	ACA32390102	Clamp Assembly	A133
98	AEG33121503	Heater Assembly	K320
99	AEJ33026401	Holder Assembly	A141
100	AFN59999407	Manual Assembly, Owners	*001
101	AGL31254954	Panel Assembly, Drawer	F220
102	AGL32300323	Panel Assembly, Control	F210
103	EAD38420635	Harness, Multi	F120
104	EBR37056503	PCB Assembly, Display	F110
105	EBR38163318	PCB Assembly, Main	A450
106	MAZ38811101	Bracket, Hinge	A134
107	MFL30574747	Manual, Service	*004