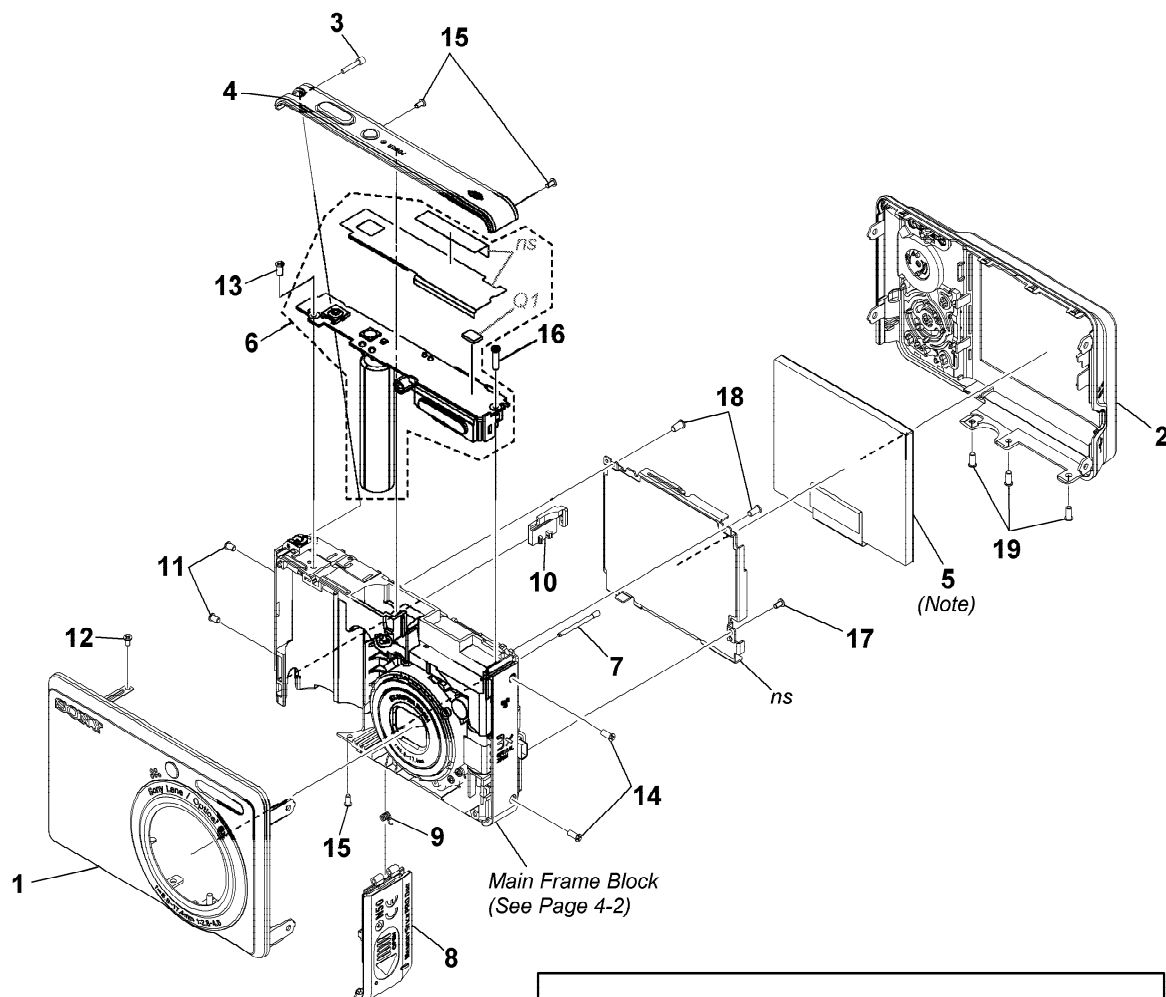


4. REPAIR PARTS LIST

4-1. EXPLODED VIEWS

4-1-1. OVERALL SECTION

ns: not supplied



Note : The adjustment is not required after replacing the LCD

- Refer to cover for mark △.

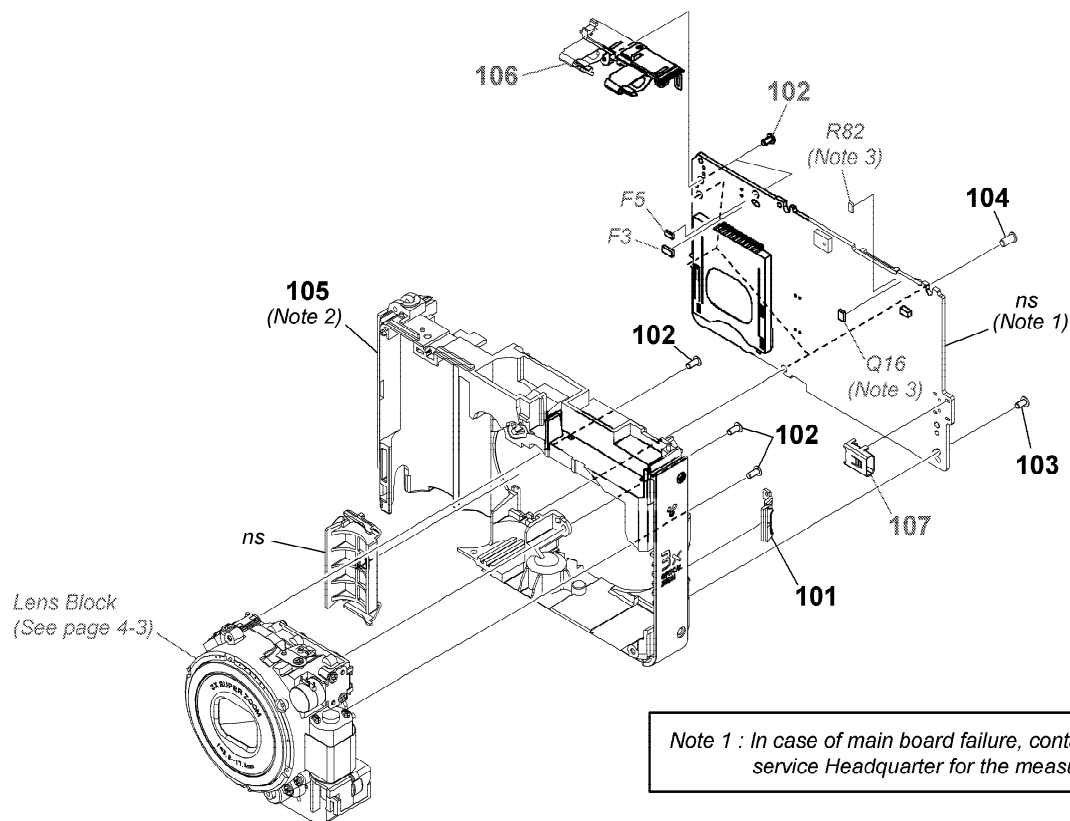
Ref. No.	Part No.	Description
1	X 2188 411-1	CABINET (FRONT) ASSY
2	X-2188-412-1	CABINET (REAR) ASSY
3	3-286-696-01	SHAFT, STRAP
4	3-286-697-01	BLOCK, RL
5	3-286-698-01	LCD
△ 6	A-1444-049-A	ST BLOCK ASSY
7	3-286-700-01	SHAFT, BT LID
8	3-286-701-01	LID, BT
9	3-286-702-01	SPRING, BT LID
10	3-286-703-01	LID, JACK

Ref. No.	Part No.	Description
11	3-287-023-11	SCREW M1.7 X 2.7
12	3-287-026-01	SCREW TP1.4 X 2.5
13	3-287-028-01	SCREW TP1.7 X 3.5
14	3-287-027-01	SCREW TP1.7 X 4
15	3-287-025-01	SCREW TP1.4 X 3
16	3-287-032-01	SCREW TP1.7 X 6.5
17	3-296-920-01	SCREW TP1.4 X 3.5
18	3-296-921-01	SCREW TP1.4 X 4
19	3-299-366-01	SCREW TP1.7 X 3.5
Q1	4-107-819-01	TRANSISTOR FLASH STROBOSCOPE

4. REPAIR PARTS LIST

4-1-2. MAIN FRAME BLOCK

ns: not supplied



Note 1 : In case of main board failure, contact your local Sony service Headquarter for the measures.

Note 2 : When separate lens block assy and main board for main frame replacement, assemble original lens block assy and main board back after repaire.

Note 3 : Refer to "Installation position of Q16 and R82" for the installation position of Q16 and R82.

- Refer to cover for mark Δ .

Ref. No.	Part No.	Description
101	3 286 699-01	SUPPORT (JACK)
102	3-287-024-01	SCREW TP1.4 X 3
103	3-287-026-01	SCREW TP1.4 X 2.5
104	3-287-028-01	SCREW TP1.7 X 3.5
105	3-286-704-01	FRAME, MAIN
106	X:2319-399-1	BASE, BT

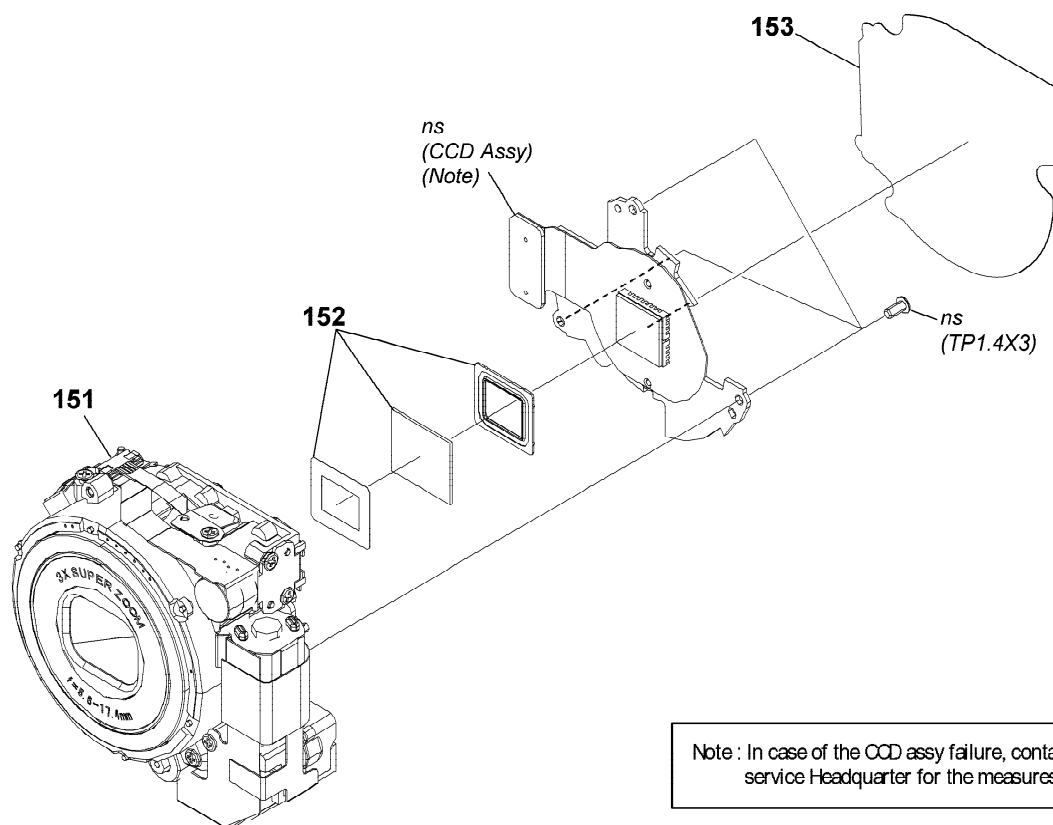
- Items marked "*" are not stocked since they are seldom required for routine service. Some delay should be anticipated when ordering these items.

Ref. No.	Part No.	Description
* 107	1820-333-11	MULTI CONNECTOR (REC) 8P
Δ F3	1576-913-11	FUSE, MICRO (1608 TYPE) (1.6A/36V)
Δ F5	1576-363-11	FUSE, MICRO (1005 TYPE) (1A/30V)
Q16	4120-071-01	TRANSISTOR DTC144WM3T5G
R82	1218-957-11	RES-CHIP 2.2k 5% 1/16W

4. REPAIR PARTS LIST

4-1-3. LENS BLOCK

ns : not supplied

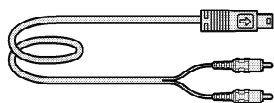


Ref. No.	Part No.	Description
151	A 1444 054 A	LENS BLOCK ASSY
152	4-110-079-01	FILTER SET, LOW PASS
153	4-110-077-01	SHEET, BLOCK ASSY PROTECTION

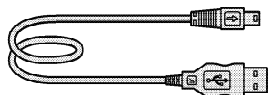
4. REPAIR PARTS LIST

4-2. ACCESSORIES

Checking supplied accessories.



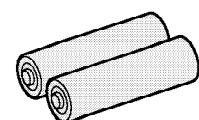
A/V cable
3-196-980-01



USB cable
3-196-981-01



Wrist strap
2-050-981-01



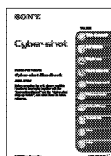
LR6 (size AA) Alkaline Battery
(Note 1)

Note 1: This item is supplied with the unit as an accessory, but is not prepared as a service part.



Instruction Manual

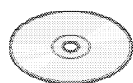
<input type="checkbox"/> 3-281-198-11	(ENGLISH) (CND, AEP, UK, E, AUS, HK, JE)
<input type="checkbox"/> 3-281-198-21	(FRENCH, ITALIAN) (CND, AEP)
<input type="checkbox"/> 3-281-198-31	(SPANISH, PORTUGUESE) (AEP, E, JE)
<input type="checkbox"/> 3-281-198-41	(GERMAN, DUTCH) (AEP)
<input type="checkbox"/> 3-281-198-51	(TRADITIONAL CHINESE, SIMPLIFIED CHINESE) (E, HK, JE)
<input type="checkbox"/> 3-281-198-61	(RUSSIAN, UKRAINIAN) (AEP)
<input type="checkbox"/> 3-281-198-71	(ARABIC, PERSIAN) (E)
<input type="checkbox"/> 3-281-198-81	(KOREAN) (KR, JE)
<input type="checkbox"/> 3-281-198-91	(POLISH, CZECH) (AEP)
<input type="checkbox"/> 3-281-199-11	(HUNGARIAN, SLOVAK) (AEP)
<input type="checkbox"/> 3-281-199-21	(SWEDISH, FINNISH) (AEP)
<input type="checkbox"/> 3-281-199-31	(NORWEGIAN, DANISH) (AEP)
<input type="checkbox"/> 3-281-199-41	(THAI, MALAYSIAN) (E)
<input type="checkbox"/> 3-281-199-51	(TURKISH, GREEK) (AEP)
<input type="checkbox"/> 3-281-199-61	(ENGLISH, SPANISH) (US)
<input type="checkbox"/> 3-281-199-71	(SIMPLIFIED CHINESE) (CH)



Cyber-shot Handbook(PDF)

The CD-ROM supplied contains all of language version of the Instruction Manual in pdf (Cyber-shot Handbook.pdf) for printing.

- The printed matter is not supplied. If required, please order it with the part number below.



CD-ROM
(Cyber-shot application software/
"Cyber-shot Handbook"/
"Cyber-shot Step-up Guide")
*3-281-189-01

<input type="checkbox"/> 3-281-190-11 (ENGLISH)	<input type="checkbox"/> 3-281-191-51 (POLISH)
<input type="checkbox"/> 3-281-190-21 (FRENCH)	<input type="checkbox"/> 3-281-191-61 (CZECH)
<input type="checkbox"/> 3-281-190-31 (ITALIAN)	<input type="checkbox"/> 3-281-191-71 (HUNGARIAN)
<input type="checkbox"/> 3-281-190-41 (SPANISH)	<input type="checkbox"/> 3-281-191-81 (SLOVAK)
<input type="checkbox"/> 3-281-190-51 (PORTUGUESE)	<input type="checkbox"/> 3-281-191-91 (SWEDISH)
<input type="checkbox"/> 3-281-190-61 (GERMAN)	<input type="checkbox"/> 3-281-192-11 (FINNISH)
<input type="checkbox"/> 3-281-190-71 (DUTCH)	<input type="checkbox"/> 3-281-192-21 (NORWEGIAN)
<input type="checkbox"/> 3-281-190-81 (TRADITIONAL CHINESE)	<input type="checkbox"/> 3-281-192-31 (DANISH)
<input type="checkbox"/> 3-281-190-91 (SIMPLIFIED CHINESE)	<input type="checkbox"/> 3-281-192-41 (THAI)
<input type="checkbox"/> 3-281-191-11 (RUSSIAN)	<input type="checkbox"/> 3-281-192-51 (MALAYSIAN)
<input type="checkbox"/> 3-281-191-21 (ARABIC)	<input type="checkbox"/> 3-281-192-61 (TURKISH)
<input type="checkbox"/> 3-281-191-31 (PERSIAN)	<input type="checkbox"/> 3-281-192-71 (GREEK)
<input type="checkbox"/> 3-281-191-41 (KOREAN)	<input type="checkbox"/> 3-281-192-81 (UKRAINIAN)

NOTE:

- Items marked "***" are not stocked since they are seldom required for routine service. Some delay should be anticipated when ordering these items.
- Abbreviation
AUS : Australian model
CH : Chinese model
CND : Canadian model
HK : Hong Kong model
JE : Tourist model
KR : Korea model