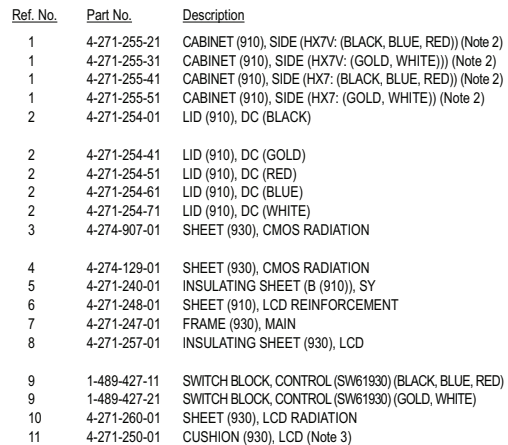


### 2-1-1. REAR SECTION

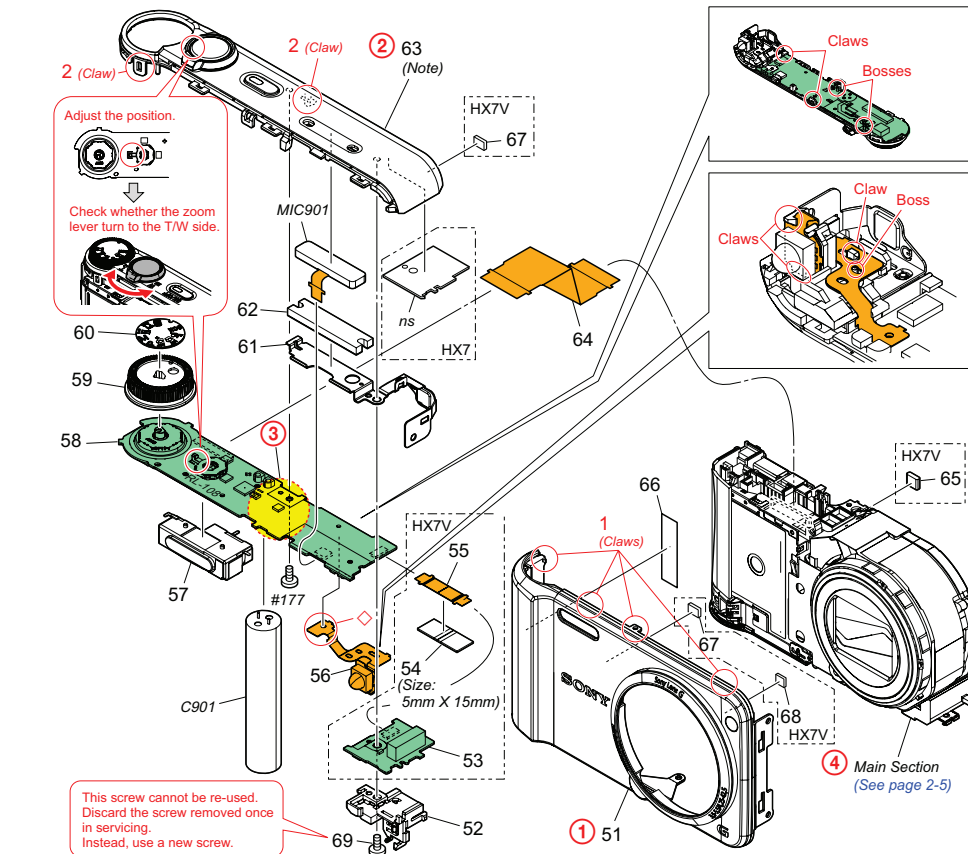


<u>Ref. No.</u>	<u>Part No.</u>	<u>Description</u>
12	4-271-252-01	WINDOW (930), LCD (Note 3)
13	X-2580-484-1	CABINET (REAR) ASSY (930C) (HX7V (BLACK))
13	X-2580-485-1	CABINET (REAR) ASSY (930D) (HX7V (GOLD))
13	X-2580-486-1	CABINET (REAR) ASSY (930E) (HX7V (RED))
13	X-2580-487-1	CABINET (REAR) ASSY (930F) (HX7V (BLUE))
13	X-2580-488-1	CABINET (REAR) ASSY (930G) (HX7V (WHITE))
13	X-2580-489-1	CABINET (REAR) ASSY (921C) (HX7 (BLACK))
13	X-2580-490-1	CABINET (REAR) ASSY (921D) (HX7 (GOLD))
13	X-2580-491-1	CABINET (REAR) ASSY (921E) (HX7 (RED))
13	X-2580-492-1	CABINET (REAR) ASSY (921F) (HX7 (BLUE))
13	X-2580-493-1	CABINET (REAR) ASSY (921G) (HX7 (WHITE))
14	4-281-579-01	SHEET (930), FLEXIBLE RETAINER (HX7V)
15	4-283-251-01	LENS CUSHION (910), BOTTOM
LCD901	8-753-373-17	ACX396BLX-1
#177	3-208-537-21	0+Z M1.4X2 NEW TORASUTA
#209	4-264-751-01	SCREW (M1.4), NEW TRU-STAR, P2 (Note 1)
#210	4-264-765-01	SCREW (M1.4), NEW TRU-STAR, P2 (Note 1)

## 4-271-255-51

## 2-1-2. TOP SECTION

ns : not supplied



Ref. No.	Part No.	Description
51	X-2580-471-1	CABINET (FRONT) ASSY (930C) (BLACK)
51	X-2580-472-1	CABINET (FRONT) ASSY (930D) (GOLD)
51	X-2580-473-1	CABINET (FRONT) ASSY (930E) (RED)
51	X-2580-474-1	CABINET (FRONT) ASSY (930F) (BLUE)
51	X-2580-475-1	CABINET (FRONT) ASSY (930G) (WHITE)

52	4-271-258-01	HOLDER (910), AF
53	A-1788-137-A	AT-042 BOARD, COMPLETE (HX7V)
54	CAUTION	SHEET (930), PROTECTION (HX7V)
55	1-883-298-11	FP-1395 FLEXIBLE BOARD (HX7V)
56	A-1788-003-A	AF-136 FLEXIBLE BOARD, COMPLETE

△*57	1-480-482-12	FLASH UNIT
58	A-1788-140-A	RL-108 BOARD, COMPLETE (HX7V)
58	A-1812-232-A	RL-108 BOARD, COMPLETE (HX7)
59	4-271-236-01	DIAL (910), MODE (BLACK, BLUE, RED)
59	4-271-236-11	DIAL (910), MODE (GOLD, WHITE)

60	4-271-256-21	PLATE (910), MODE (BLACK, BLUE, RED)
----	--------------	--------------------------------------

Ref. No.	Part No.	Description
60	4-271-256-31	PLATE (910), MODE (GOLD, WHITE)
61	4-271-232-01	RETAINER (930), MICROPHONE
62	4-271-233-01	CUSHION (910), MICROPHONE
63	X-2580-496-1	CABINET (UPPER) ASSY (930CEF) (BLACK, BLUE, RED) (Note)

63	X-2580-497-1	CABINET (UPPER) ASSY (930DG) (GOLD, WHITE) (Note)
64	1-880-484-11	RL-099 FLEXIBLE BOARD
* 65	3-093-800-01	GASKET (230) (HX7V)
66	4-274-128-01	SHEET (930), GRIP RADIATION
67	4-277-870-01	GASKET (3X2X3) (HX7V)

68	4-272-578-01	GASKET (3X4X2.5) (HX7V)
69	4-282-897-01	SCREW, TAPPING PA-S, P2
△ C901	1-116-143-21	CAP. ELECT 315V 79uF
MIC901	1-542-862-11	MICROPHONE UNIT

#23	3-080-204-11	SCREW, TAPPING, P2
#177	3-208-537-21	O+Z M1.4X2 NEW TORASUTA

## DISASSEMBLY

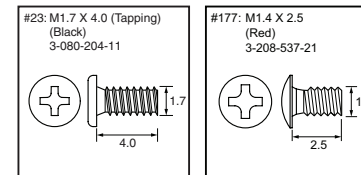
- Remove to numerical order (① to ④) in the left figure.
- The meaning of the sign in left figure is as follows. Be careful when it removes.  
◇: Solder

③

DISCHARGING OF THE CHARGING CAPACITOR

ストロボ用充電コンデンサの放電

## Screw



## Note

### CAUTION

For the part of 54 : SHEET (930), PROTECTION (4-271-234-01), cut NON WOVEN (T0.25) (3-076-631-01) into the desired length and use it.

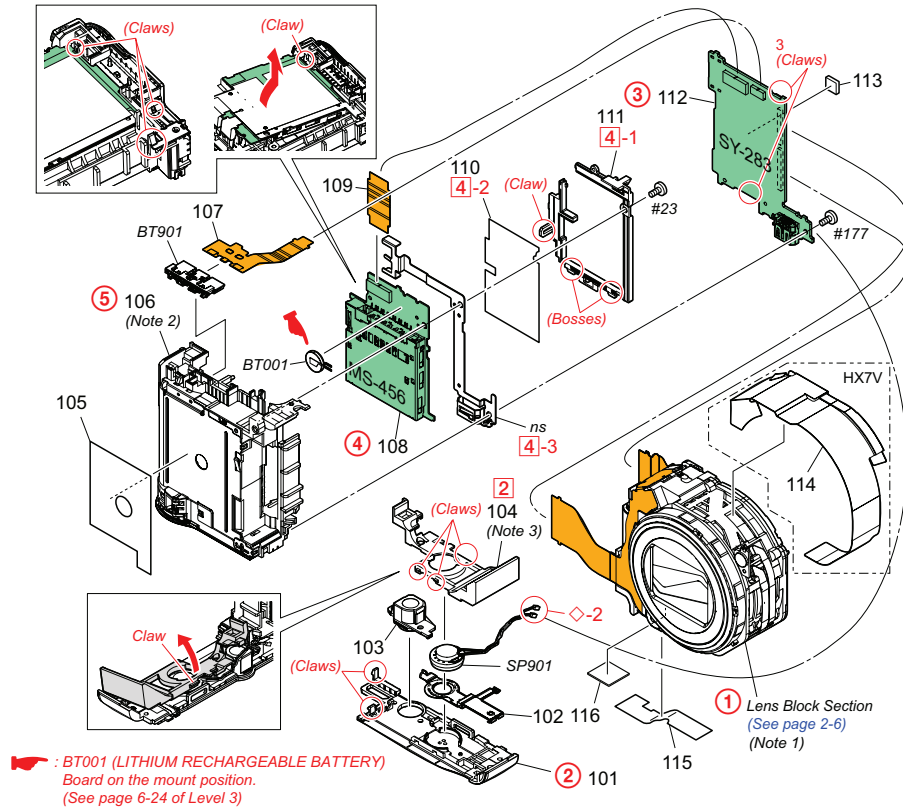
### 注意

54 : SHEET (930), PROTECTION (4-271-234-01)は、NON WOVEN (T0.25) (3-076-631-01) を切って使用すること。

Note: Refer to "Assembly-2: Precaution During of Cabinet (Upper) Assy (930) installation".

Note: "Assembly-2: Precaution During of Cabinet (Upper) Assy (930) installation" を参照してください。

ns : not supplied



<u>Ref. No.</u>	<u>Part No.</u>	<u>Description</u>
101	4-271-242-01	BOTTOM (910), CABINET (BLACK, BLUE, RED)
101	4-271-242-11	BOTTOM (910), CABINET (GOLD, WHITE)
102	4-271-243-01	PLATE (910), SP GROUND
103	4-271-244-01	SCREW (910), TRIPOD
104	4-271-245-01	HOLDER (910), SP (Note 3)
105	4-274-906-01	SHEET (930), BT RADIATION
106	X-2580-476-1	HOLDER ASSY (910CEF), BT (HX7 (BLACK, BLUE, RED)/ HX7V: (BLACK, BLUE, RED)(US, UK, JJ) (Note 2)
106	X-2580-477-1	HOLDER ASSY (910DG), BT (HX7 (GOLD, WHITE)/ HX7V: (GOLD, WHITE)(US, UK, JJ) (Note 2)
106	X-2580-478-1	HOLDER ASSY (910CEF) (N), BT (HX7V: (BLACK, BLUE, RED)(EXCEPT US, UK, JJ) (Note 2)
106	X-2580-479-1	HOLDER ASSY (910DG) (N), BT (HX7V: (GOLD, WHITE)(EXCEPT US, UK, JJ) (Note 2)
107	1-883-056-11	BT-070 FLEXIBLE BOARD

<u>Ref. No.</u>	<u>Part No.</u>	<u>Description</u>
108	A-1787-999-A	MS-456 BOARD, COMPLETE
109	1-883-059-11	FP-1356 FLEXIBLE BOARD
110	4-271-263-01	SHEET (930), SY RADIATION
111	4-271-241-01	HOLDER (910), SY
112	A-1788-007-A	SY-283 BOARD, COMPLETE (SERVICE)
113	4-271-262-01	SPACER (930), SY
114	4-271-235-01	SHEET (930), LENS (GPS) (HX7V)
115	4-281-021-01	SHEET (930), LENS BOTTOM
116	4-283-251-01	LENS CUSHION (910), BOTTOM
△ BT001	1-756-813-11	LITHIUM RECHARGEABLE BATTERY
△ BT901	1-780-764-11	TERMINAL BOARD, BATTERY
SP901	1-858-343-31	LOUDSPEAKER (1.0CM)
#23	3-080-204-11	SCREW, TAPPING, P2
#177	3-080-537-21	O+Z M1.4X2 NEW TORASUTA

## DISASSEMBLY

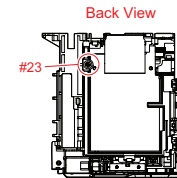
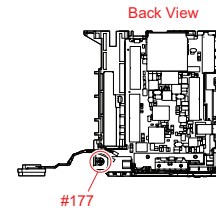
1. Remove to numerical order (① to ⑤) in the left figure.
2. The meaning of the sign in left figure is as follows. Be careful when it removes.  
 ◇-X: Solder

② SP Holder (910) (2)

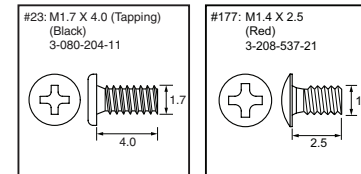
③ #177 X 1

④ #23 X 1 → SY Holder (910) (4-1) →

SY Radiation Sheet (930) (4-2) → Connector Frame (930) (4-3)



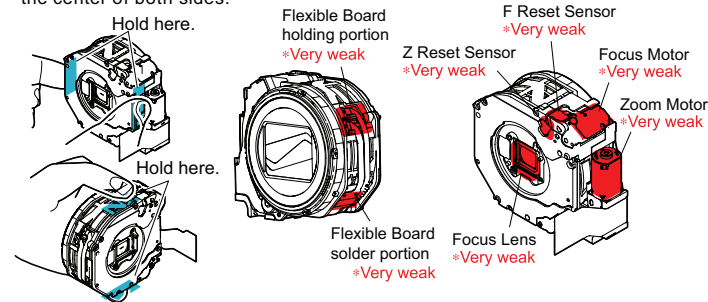
## Screw



### Note

Note 1  
PRECAUTIONS WHEN HOLDING THE LENS BLOCK

- Hold the Lens Block at the center of both sides.
- Do not hold the following part.



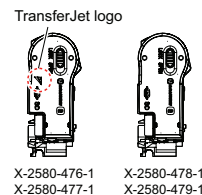
### CAUTION

Danger of explosion if battery is incorrectly replaced.  
Replace only with the same or equivalent type.  
Dispose of used batteries according to the instructions.

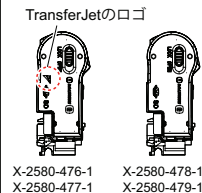
**注意**

電池の交換は、正しく行わないと破裂する恐れがあります。電池を交換する場合には必ず同じ型名の電池又は同等品と交換してください。使用済み電池は、取扱指示に従って処分してください。

Note 2: When replacing this part, be careful whether a LOGO is existed or not.

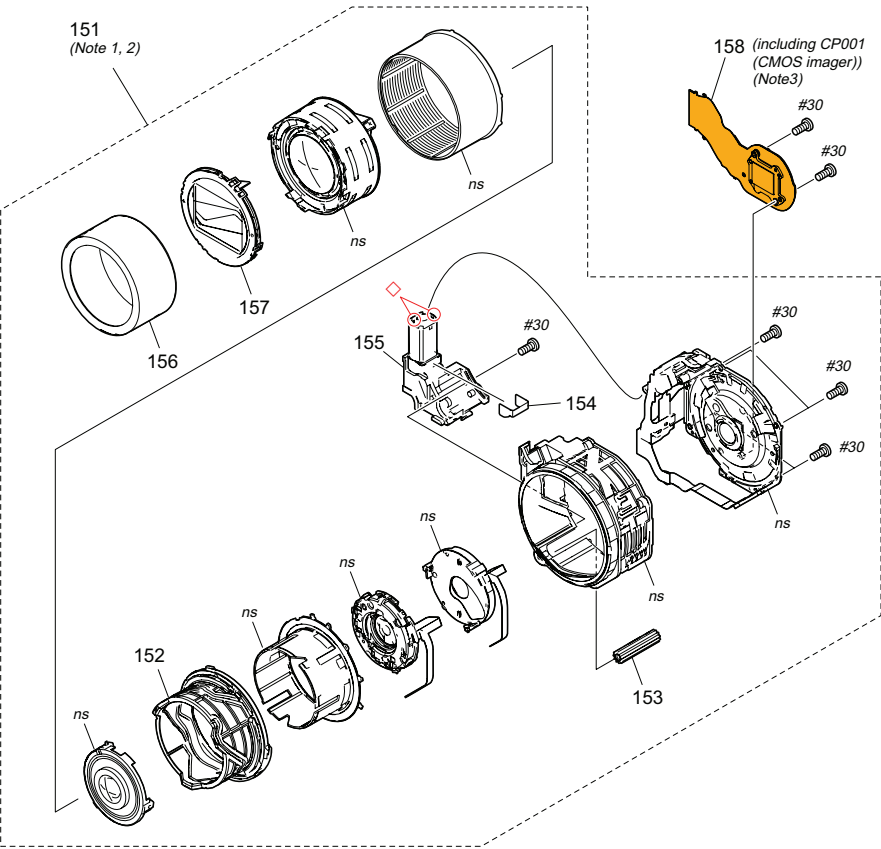


Note 2: 交換時にロゴの有無に注意してください。



2-1-4. LENS BLOCK SECTION

ns : not supplied



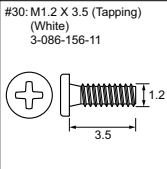
Ref. No.	Part No.	Description
151	1-856-013-11	OPTICAL UNIT (BE006) (BLACK, BLUE, RED) (Note 1, 2)
151	1-856-013-31	OPTICAL UNIT (BE0061) (GOLD, WHITE) (Note 1, 2)
152	4-174-736-01	TUBE (BE006), CAM
153	4-174-733-01	GEAR (BE006), NARUTO
154	4-174-734-01	SPRING (BE006), FG LEAF
155	1-487-859-11	MOTOR GEAR BLOCK, ZOOM (BE006)
156	4-174-735-01	RING (A (BE006)), ORNAMENTAL (BLACK, BLUE, RED)
156	4-174-735-11	RING (A (BE0061)), ORNAMENTAL (GOLD, WHITE)

Ref. No.	Part No.	Description
157	X-2546-57401	BARRIER ASSY (BE006)
158	A-1803-753-A	CD-809 BOARD, COMPLETE (including CP001(CMOS Imager)) (Note 3)
#30	3-086-156-11	SCREW B1.2

DISASSEMBLY

1. The meaning of the sign in left figure is as follows. Be careful when it removes.
- ◇: Solder

Screw



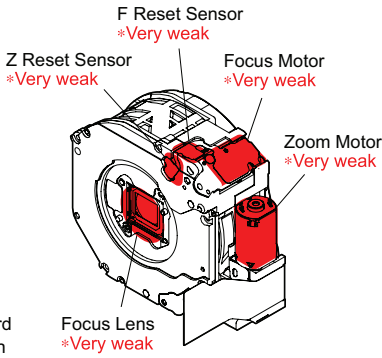
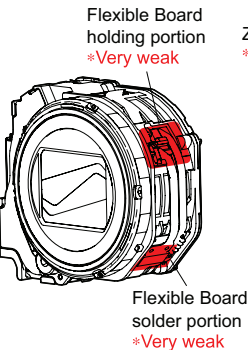
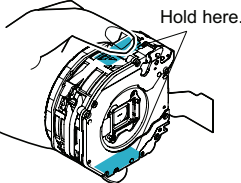
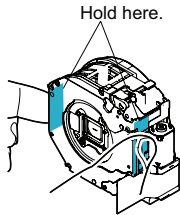
Note

Note 1

PRECAUTIONS WHEN HOLDING THE LENS BLOCK

Hold the Lens Block at the center of both sides.

Do not hold the following part.



Note 2: Refer to the following each item when you exchange parts of Lens Block.

- 1-6. ORNAMENTAL RING A OR BARRIER ASSY REPLACING METHOD (page 1-7)
- 1-7. CAM TUBE BLOCK REPLACING METHOD (page 1-7)
- 1-8. FINAL INSPECTION (page 1-11)

Note 2: レンズブロックの各部品を交換する際は、下記の各項目を参照してください。


- 1-6. ORNAMENTAL RING A OR BARRIER ASSY REPLACING METHOD (page 1-7)
- 1-7. CAM TUBE BLOCK REPLACING METHOD (page 1-7)
- 1-8. FINAL INSPECTION (page 1-11)

Note 3: Be sure to read "Precautions for Replacement of Imager" on page 6-1 of Level3 when changing the imager.


Note 3: イメージャの交換時はLevel3の6-1ページ、「イメージャ交換時の注意」を必ずお読みください。

Checking supplied accessories.


Note : This item is supplied with the unit as an accessory, but is not prepared as a service part.




Battery charger  
(AC-UB10UB10B)  
△ 1-489-282-11 (J)  
△ 1-489-282-21 (US, CND)  
△ 1-489-282-31 (CH)  
△ 1-489-282-61 (EXCEPT US, CND, CH, J)




Rechargeable battery pack(NP-BG1)  
/Battery case  
(Note)




Power cord (mains lead)  
(EXCEPT US, CND, CH, J)  
△ 1-837-421-11 (UK, HK, E (Saudi) )  
△ 1-837-424-11 (TW)  
△ 1-837-427-11 (AEP, E (EXCEPT Saudi) )  
△ 1-837-428-11 (KR)  
△ 1-837-429-11 (AUS)




Wrist strap  
2-050-981-01 (Gray) (GOLD, WHITE)  
2-050-981-11 (Black) (BLACK, RED, BLUE)




Multi-use terminal USB cable  
1-838-826-11



CD-ROM  
(Cyber-shot application software /  
"Cyber-shot User Guide")  
4-273-497-01 (J)  
4-273-498-01 (EXCEPT J)



Instruction Manual  
(Only for destination Japanese model)  
日本語、英語、韓国語、中国語のみ部品供給可能です。  
4-273-499-11 (SIMPLIFIED CHINESE)  
4-273-500-11 (ENGLISH)  
\* 4-273-500-21 (ENGLISH, SPANISH)  
\* 4-273-500-31 (ENGLISH, FRENCH)  
\* 4-273-500-41 (ENGLISH, RUSSIAN, UKRAINIAN)  
\* 4-273-500-51 (ENGLISH, FRENCH, ITALIAN, SPANISH,  
PORTUGUESE, GERMAN, DUTCH, TURKISH, GREEK,  
POLISH, CZECH, HUNGARIAN, SLOVAK, SWEDISH,  
FINNISH, NORWEGIAN, DANISH, CROATIAN, ROMANIAN)  
\* 4-273-500-61 (ENGLISH, SIMPLIFIED CHINESE, TRADITIONAL CHINESE,  
MALAY, INDONESIAN, THAI, ARABIC, PERSIAN)  
\* 4-273-500-71 (ENGLISH, SPANISH, PORTUGUESE)  
\* 4-273-500-81 (ENGLISH, TRADITIONAL CHINESE,  
SIMPLIFIED CHINESE, INDONESIAN, ARABIC, PERSIAN)  
\* 4-273-501-11 (ENGLISH, TRADITIONAL CHINESE, SIMPLIFIED CHINESE)  
4-273-501-21 (KOREAN)  
\* 4-273-501-41 (ENGLISH, TRADITIONAL CHINESE)  
\* 4-273-501-51 (ENGLISH, ARABIC, PERSIAN)  
4-273-502-01 (JAPANESE)



Cyber-shot User Guide (HTML)

About Cyber-shot User Guide (HTML)

- The CD-ROM supplied contains all of language version.
- The printed matter is not supplied.
- The following lists part numbers of languages.
- This CD-ROM is provided in HTML.

Therefore, it is suitable for browsing on the PC, but is not suitable for printing.

\* 4-270-491-01 (JAPANESE)

\* 4-270-491-11 (ENGLISH)

\* 4-270-491-21 (FRENCH)

\* 4-270-491-31 (ITALIAN)

\* 4-270-491-41 (SPANISH)

\* 4-270-491-51 (PORTUGUESE)

\* 4-270-491-61 (GERMAN)

\* 4-270-491-71 (DUTCH)

\* 4-270-491-81 (TRADITIONAL CHINESE)

\* 4-270-491-91 (SIMPLIFIED CHINESE)

\* 4-270-492-11 (RUSSIAN)

\* 4-270-492-21 (ARABIC)

\* 4-270-492-31 (PERSIAN)

\* 4-270-492-41 (KOREAN)

\* 4-270-492-51 (POLISH)

\* 4-270-492-61 (CZECH)

\* 4-270-492-71 (HUNGARIAN)

\* 4-270-492-81 (SLOVAK)

\* 4-270-492-91 (SWEDISH)

\* 4-270-493-11 (FINNISH)

\* 4-270-493-21 (NORWEGIAN)

\* 4-270-493-31 (DANISH)

\* 4-270-493-41 (THAI)

\* 4-270-493-51 (MALAY)

\* 4-270-493-61 (TURKISH)

\* 4-270-493-71 (GREEK)

\* 4-270-493-81 (UKRAINIAN)

\* 4-270-493-91 (CROATIAN)

\* 4-270-494-11 (ROMANIAN)

\* 4-270-494-21 (INDONESIAN)

\* 4-270-494-31 (BRAZILIAN PORTUGUESE)

DSC-HX7/HX7V\_L2

2-7E