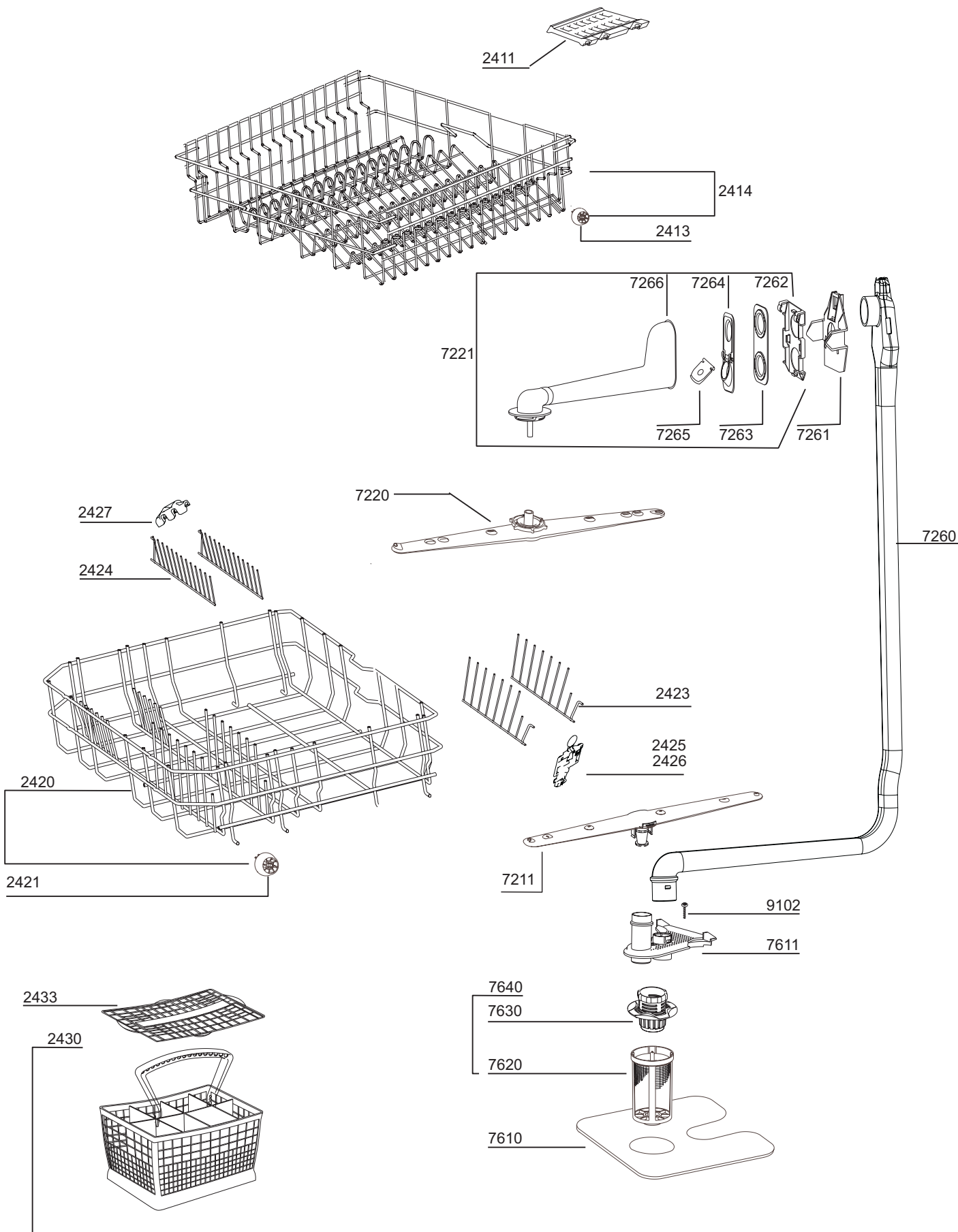


R	Date/Tarih	Rev No
Main Body		
Gövde Grubu		
1799841888		



R	Date/Tarih	
	Su sistemi	
	Inner tub	
	17 9982 1720	

		DFN2520S	
REPERE	REFERENCE	DESIGNATION	Q
11	1881810100	SUPPORT PIED GAUCHE	1
12	1881810200	SUPPORT PIED DROIT	1
13	1881790100	SUPPORT DE PIED	2
40	1880080392	SOCLE	1
110	1883140100	PIED AJUSTABLE	4
220	1880111310	PANNEAU GAUCHE	1
221	1880111410	PANNEAU DROIT	1
240	1880012000	SUPPORT CONTREPOIDS	1
300	1742201300	DESSUS	1
401	1880290200	CHARNIERE DROITE	1
402	1880290100	CHARNIERE GAUCHE	1
403	1880040100	SUPPORT CHARNIERE	1
440	1881020100	RESSORT DE PORTE	2
470	1881040200	POULIE DE PORTE	2
472	1881090100	FIXATION PLASTIQUE DE RESSORT	1
473	1881090200	FIXATION PLASTIQUE DE RESSORT	1
500	1742031000	PLINTHE	1
530	1880250600	SUPPORT DE PLINTHE	1
610	1880590100	CONTREPOIDS	1
650	1882430400	ISOLATION DE CUVE	1
652	1740290100	ISOLANT ARRIERE	1
653	1884750100	ISOLATION DESSUS DE CUVE AVANT	1
654	1884740100	ISOLATION ARRIERE	2
655	1886840100	ISOLATION DE CUVE GAUCHE	1
656	1882420100	ISOLATION DE PLINTHE	1
658	1886820300	ISOLATION DE PANNEAU DE FACADE	1
1030	1742010610	PANNEAU DE PORTE	1
1200	1732600100	CONTRE PORTE AVEC ISOLEMENT	1
1201	1880020100	SUPPORT BANDEAU AVANT	1
1230	1882410100	ISOLATION DE PORTE	1
1230	1886810100	ISOLATION DE PORTE	1
1300	1880300100	ENSEMBLE DE SECURITE DE PORTE	1
1310	1881970100	CROCHET DE VEROUILLAGE	1
1910	1884690100	JOINT DE TOUR DE PORTE	1
1911	1882250100	PIED JOINT DROIT	1
1912	1882250200	PIED JOINT GAUCHE	1
1920	1882470100	JOINT BAS DE PORTE	1
2000	1740002000	CUVE	1
2411	1883600300	TABLETTE	4
2413	1885800200	ROULETTE SUPERIEUR	8
2414	1733400200	PANIER SUPERIEUR + ROULETTES	1
2420	1733301800	PANIER INFERIEUR + ROULETTES	1
2421	1885900400	ROULETTE INFERIEUR	8
2423	1733320300	PETIT SUPPORT ASSIETTES GAUCHE	2
2424	1733330300	PETIT SUPPORT ASSIETTES DROIT	2
2425	1733360200	CROCHET GAUCHE BLEU	2
2426	1733370200	CROCHET DROIT BLEU	2
2428	1881560400	DECO PANIER	1
2429	1881590400	DECO PANIER	1
2430	1883200100	PANIER A COUVERTS	1

2433	1881860100	GRILLE DE PANIER A COUVERTS	1
2610	1880240100	RAIL DE PANIER	2
2611	1880580100	EMBOUT DE RAIL ARRIERE	2
2612	1880570100	EMBOUT DE RAIL AVANT	2
3010	1746011886	BANDEAU	1
3310	1742181000	MANETTE PROGRAMMATEUR	1
3320	1742041000	BOUTON M / A	1
3321	1742191000	BOUTON DEPART	1
3510	1742170100	INTERCALAIRE	1
3511	1742160100	DIFFUSEUR LUMINEUX	2
3513	1742320100	DIFFUSEUR LUMINEUX	1
4000	1740700200	POMPE CYCLAGE	1
4001	1880390100	FIXATION MOTEUR	1
4002	1740150100	FIXATION DE POMPE	1
4003	1881440100	SUPPORT MOTEUR PLASTIQUE	1
4004	1740600100	ENSEMBLE FIXATION MOTEUR	1
4200	1883790200	CONDENSATEUR	1
4210	1883880100	FILTRE ANTI PARASITE	1
4300	1740300100	POMPE DE VIDANGE	1
4500	1888130100	RESISTANCE	1
4504	1719990100	DURITE RESISTANCE / POMPE	1
4800	1735870100	CABLAGE	1
4901	1892101600	CORDON D'ALIMENTATION	1
5050	1899450250	MODULE	1
5052	1746380300	COUVERCLE ARRIERE DE MODULE	1
5060	1880601305	PLATINE DE DEPART DIFFERE	1
5061	1746310300	DIFFUSEUR DE LUMIERE	1
5710	1883570100	ELECTROVANNE	1
5830	1729900200	DEBIMETRE	1
6160	1809700000	CONTACTEUR DETECTEUR DE SEL	1
6161	1718830100	CONTACT NIVEAU DE RINCAGE	1
6210	1883250100	INTERRUPTEUR M / A	1
6211	1734600100	SELECTEUR DE FONCTION	1
6311	1883240100	CONTACT ANTIDEBORDEMENT	1
6315	1729930101	DEBIMETRE	1
6330	1831830001	INTERRUPTEUR DE PORTE	1
6800	1718600200	BOITE A PRODUIT	1
6801	1718670100	JOINT DE BOITE A PRODUIT	1
6802	1831470000	ELECTRO-AIMANT	1
6811	1718750100	BOUCHON DETERGENT	1
6920	1887740101	SONDE	1
7010	1805100200	TUYAU D'ARRIVEE D'EAU	1
7011	1883740100	SUPPORT TUYAU DE VIDANGE	2
7013	1800710000	FILTRE ARRIVEE D'EAU	1
7100	1744000300	POT A SEL	1
7102	1883970100	ECROU DE BOITE A SEL	1
7103	1800720600	JOINT DE BOITE A SEL	1
7104	1744250100	JOINT TORIQUE	2
7140	1883900100	BOUCHON + JOINT DE BOITE A SEL	1
7160	1741600200	REPARTITEUR	1
7161	1882630100	JOINT DE REPARTITEUR	1
7162	1882620500	ECROU DE LA GRILLE DU REPARTITEUR	1
7169	1800862100	DURITE	1

7211	1746100100	BRAS DE LAVAGE INFERIEUR	1
7215	2002372100	COLLIER DE VIDANGE	1
7220	1746200100	BRAS DE LAVAGE SUPERIEUR	1
7221	1880900300	ENSEMBLE SUPPORT BRAS SUPERIEUR	1
7260	1881240100	CONDUIT INTERIEUR DU BRAS	1
7261	1737910100	GUIDE SUPPORT DE BRAS	1
7262	1733430100	LOGEMENT DE SUPPORT DE BRAS SUPERIEUR	1
7263	1881280100	JOINT ISOLATION	1
7264	1881360100	FIXATION DE SUPPORT DE BRAS	1
7265	1881370100	CLAPET DE BRAS SUPERIEUR	1
7266	1740270100	SUPPORT DE BRAS DE LAVAGE	1
7510	1741501800	BOL DE FOND DE CUVE	1
7550	1740110100	DURITE COUDEE	1
7560	1888100100	KIT LOGEMENT CONTACT ANTI DEBORDEMENT	1
7561	1884280100	FLOTTEUR ANTI DEBORDEMENT	2
7610	1740400100	TAMIS	1
7611	1740900200	SUPPORT DE BRAS INFERIEUR	1
7620	1740220100	FILTRE FOND DE CUVE	1
7630	1740230100	FIXATION DE FILTRE	1
7640	1740800100	ENSEMBLE DE FILTRE	1
7810	1740160300	TUYAU DE VIDANGE	1
7831	1740130100	DURITE POMPE / RESISTANCE	1
7834	1800631600	DURITE REPARTITEUR / ELECTROVANNE	1
7835	1800632000	DURITE REPARTITEUR / DEBIMETRE	1
7839	1800864100	DURITE REPARTITEUR / POT A SEL	1
7842	1800862300	DURITE	1
7910	1740050100	JOINT BOL	1
8004	1719510100	CONDUIT D'ASPIRATION	1
8005	1719490100	JOINT DE CONDUIT D'ASPIRATION	1
8006	1719590100	GRILLE	1
9012	2002372200	COLLIER DE DURITE	1
9014	2002372500	COLLIER DE DURITE COUDEE	2
9015	2002373200	COLLIER DE DURITE	1
9016	2002370800	COLLIER DURITE REPARTITEUR / ELECTROVANNE	4
9018	1889280600	COLLIER DE DURITE	2
9022	1883170100	SUPPORT DE CORDON	1
9026	2002370900	COLLIER DE DURITE	2
9101	1831680000	VIS	1
9102	1889340100	VIS	5
9104	1803430200	VIS	5
9105	1883430100	VIS	6
9113	1883470100	VIS	28
9114	1883460100	VIS	6
9115	1801080100	VIS SUPPORT CONTREPOIDS	18
9116	1889330100	VIS	2
9118	1883410100	VIS	4
9153	1802860200	ECROU	4
9154	1882290200	VIS CAPOT	4
9155	1883440100	VIS	1
9213	1831780000	CLIP DE POULIE DE PORTE	2
9640	1882280200	ISOLANT	1
9641	1880270200	ISOLATION	2
9930	2002740000	COL DE CYGNE	1

9935	1850330000	ENTONNOIR A SEL	1
------	------------	-----------------	---

Softening Adjustment:

In order to enter the softening adjusting mode, select the knob position of 1 while the DW is out of energy (on/off is shut) then press the start button and energize the DW and keep pressing on the button for 5 seconds, after this DW enters the softening adjusting mode. The adjusted softening level shown by the program follow up indicators for 5 seconds after entering the mode. Softening level should be decreased or increased by turning the knob to the positions of 2, 3, 4, 5:

- For the 1st level select position 1 (regenerates for every 255 lt water inlet) (Washing indicator is on).
- For the 2nd level select position 2 (regenerates for every 105 lt water inlet) (End indicator is on).
- For the 3rd level select position 3 (regenerates for every 45 lt water inlet) (Both indicators on).
- For the 4th level select position 4 (regenerates for every 30 lt water inlet) (Program following indicators are off).
- For the 5th level select position 5 (regenerates for every 12 lt water inlet) (Program following indicators blink).

After selecting the required level of softening, save the selected level to the memory by pressing the start button and exit the level adjusting mode by shutting down the machine. After the last draining process of the last hot rinsing step, regeneration valve is energized automatically by the control system if there exists a need for a regeneration process. 10 minutes waiting period is required as the next step of the regeneration process. This period is followed by 2,8lt water take-in to remove the salty water from the regeneration unit.

Functional Test:

In order to enter the functional test mode (short program mode), select the knob position of 2 while the DW is out of energy (on/off is shut) then press the start button and energize the DW and keep pressing on the button for 5 seconds. All of the indicators turns on for 2 seconds after entering the short program mode. Program following indicators blink if there exist any fault within the memory of the control system. After entering the short program mode, start the short program by pressing the "start" button. Short program follows the steps below:

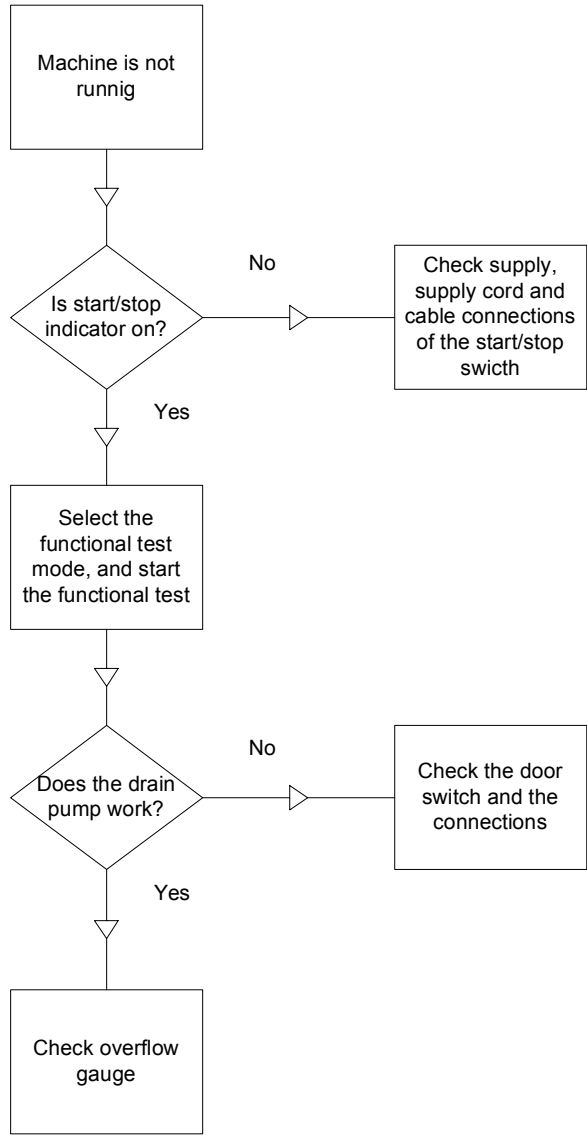
1. Draining (and Fan - if exists on the machine -) starts (30 seconds)
2. Water inlet (4.0 lt)
3. Water circulation, heating, detergent (60 seconds)
4. Water circulation, heating (120 seconds)
5. Draining (30 seconds)
6. Regeneration (60 seconds)
7. Water inlet, draining (for cleaning the resin) (3.0 lt)
8. Draining (30 seconds)

During the short program, the program following indicators is used to inform the service stuff in the case of any fault detection:

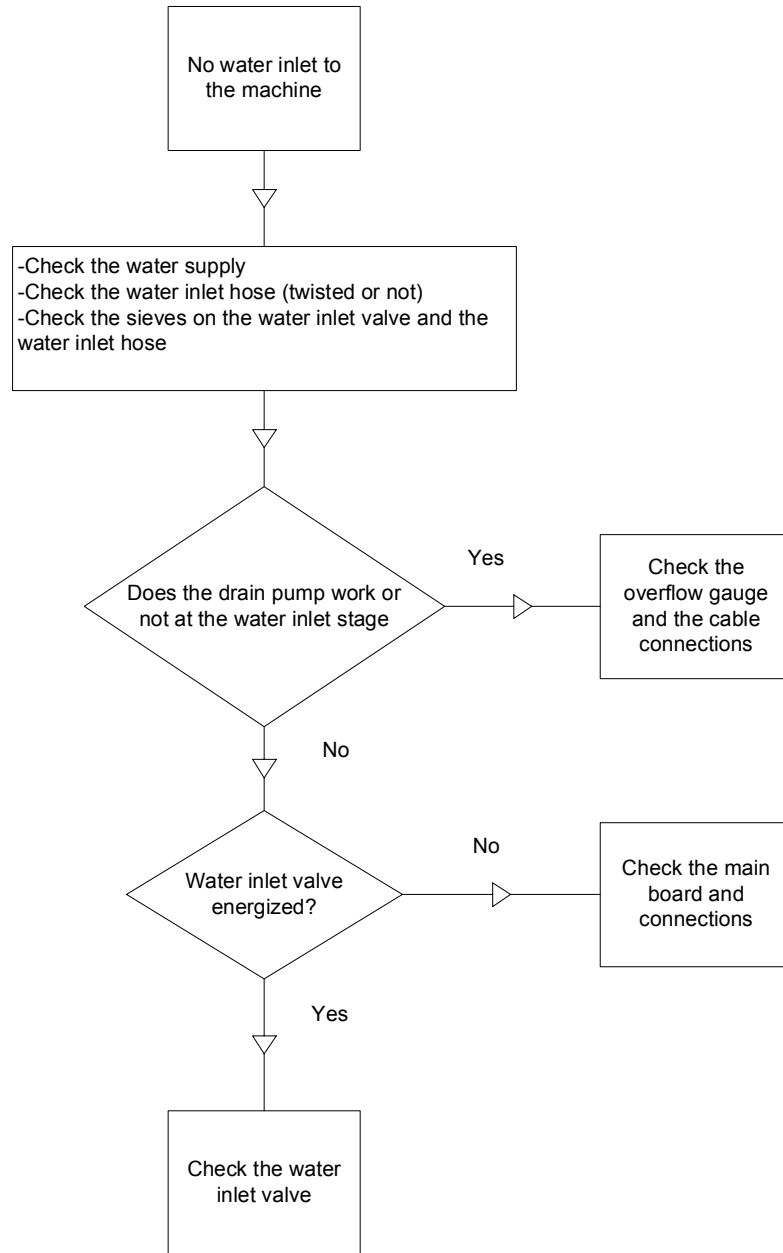
- All program following indicators are off No fault detected
- Washing indicator is on Water inlet or water counter is faulty
- End indicator is on NTC is faulty

EEPROM Reset:

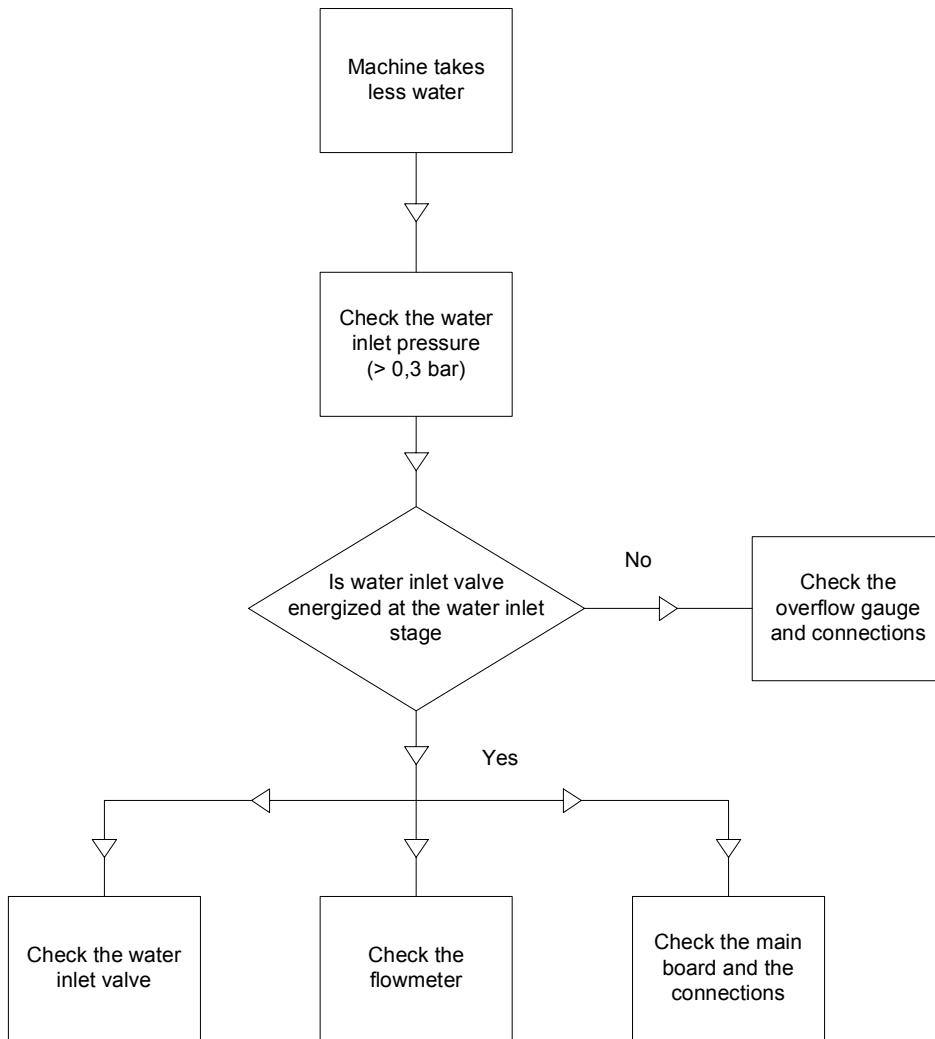
In order to enter the EEPROM Reset mode, select the knob position of 5 while the DW is out of energy (on/off is shut) then press the start button and energize the DW and keep pressing on the button for 5 seconds, after this control card automatically resets the content of EEPROM and End indicator starts blinking. In order to continue with the normal operation, DW should be shut-down from the on-off switch and then re-energized.



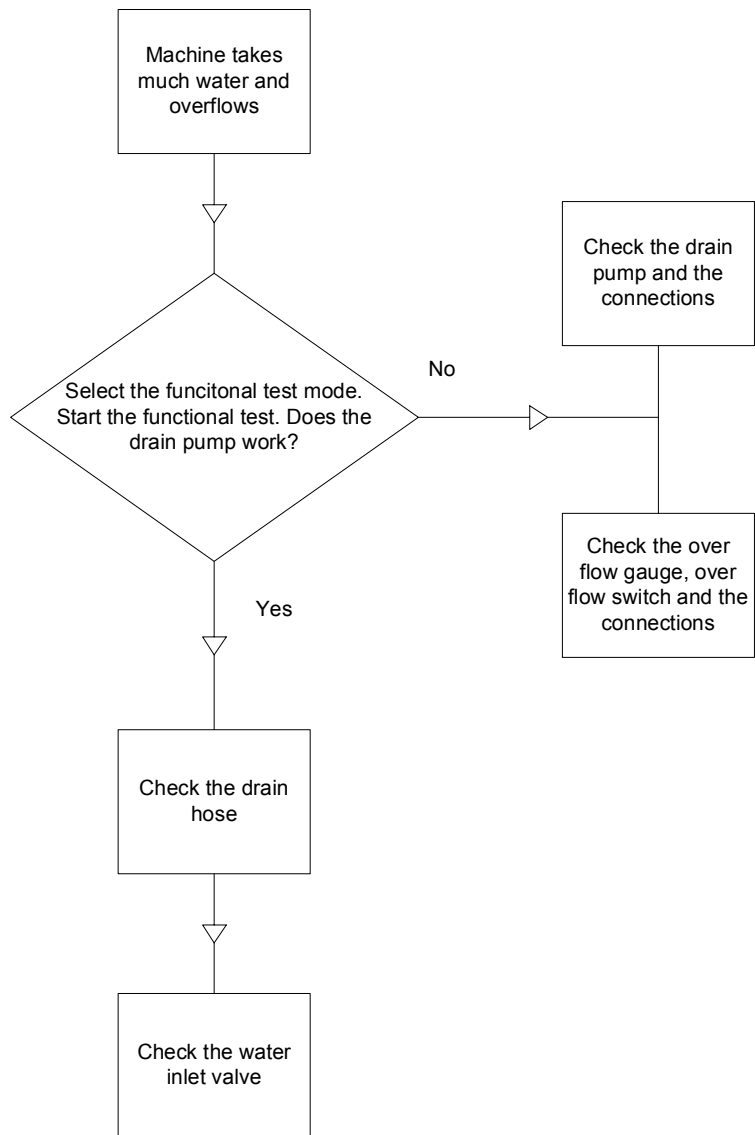
TROUBLESHOOTING GUIDE FOR A3 TYPE DW'S



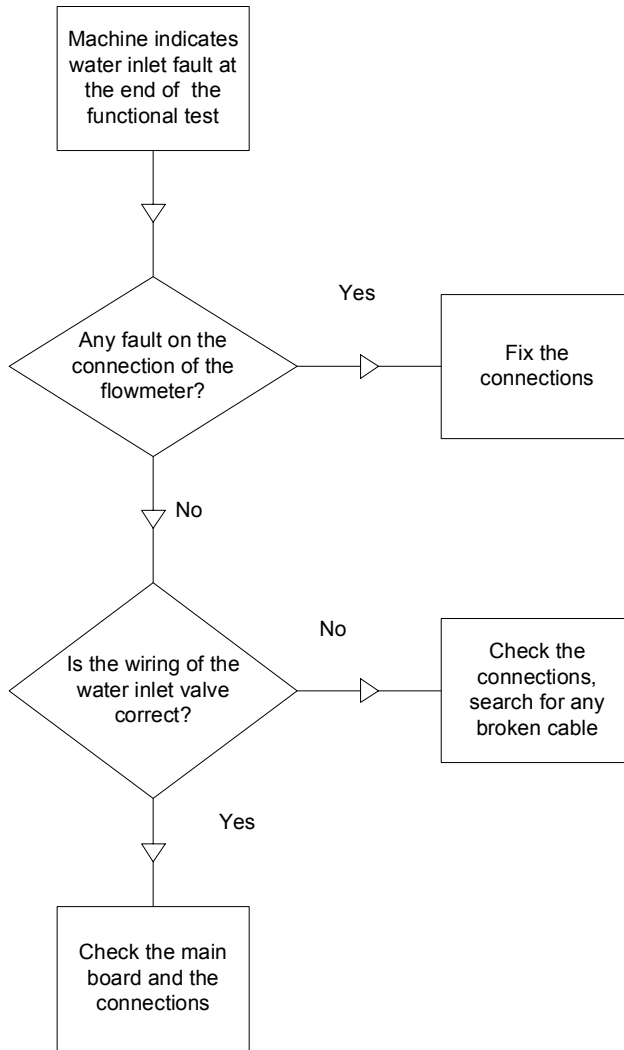
TROUBLESHOOTING GUIDE FOR A3 TYPE DW'S



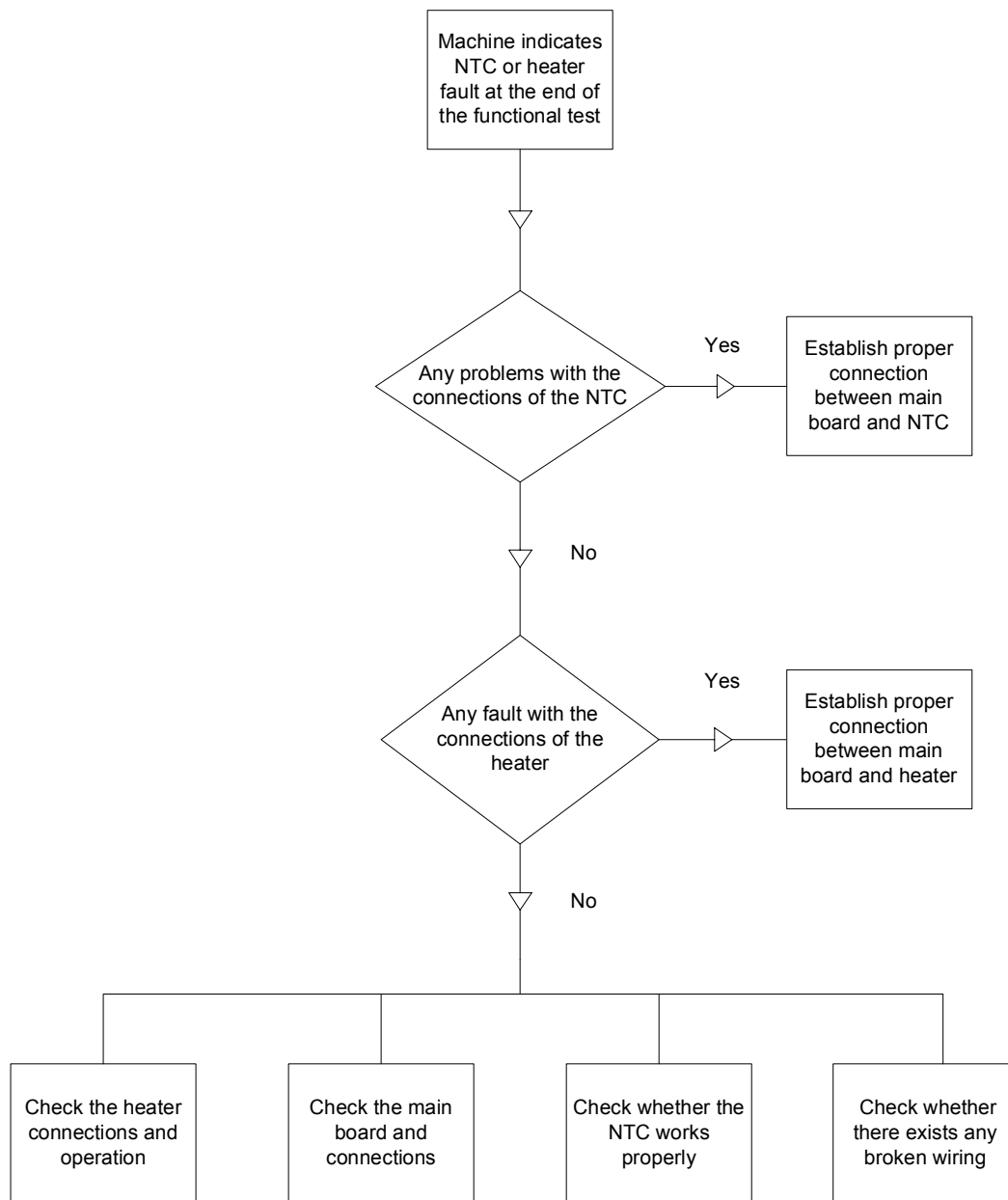
TROUBLESHOOTING GUIDE FOR A3 TYPE DW'S



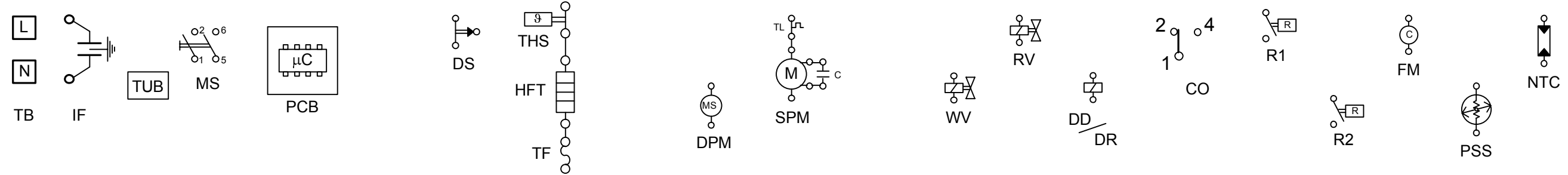
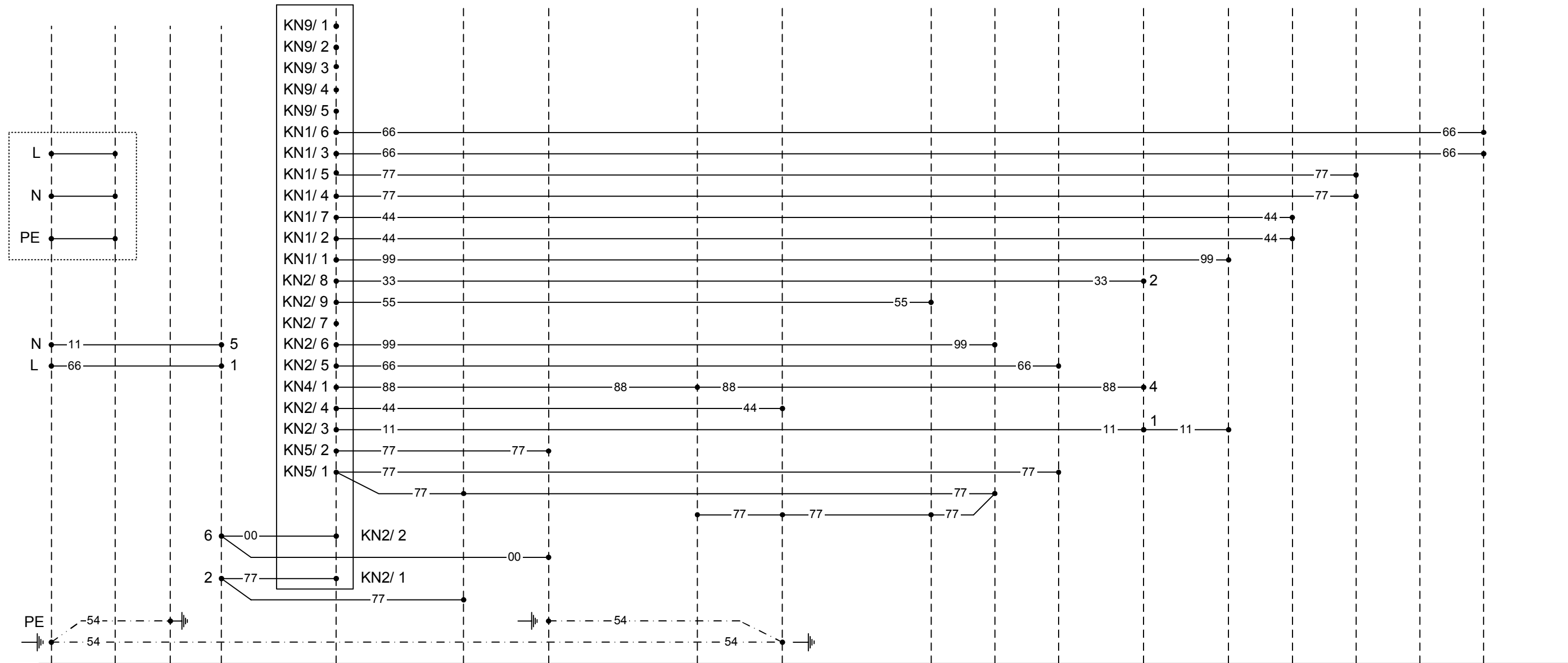
TROUBLESHOOTING GUIDE FOR A3 TYPE DW'S



TROUBLESHOOTING GUIDE FOR A3 TYPE DW'S



TROUBLESHOOTING GUIDE FOR A3 TYPE DW'S



MS	Main Switch	SPM	Circulation Pump
TB	Terminal Block	TL	Thermic of Circulation Motor
DS	Door Switch	C	Capacitor
R1	Salt Reed Relay	RV	Regeneration Valve
R2	Rinse-aid Reed Relay	DD/DR	Thermoactuator Dispenser Unit
THS	Security Thermostat	NTC	NTC
HFT	Flow Through Heater	PSS	Programme Select Switch
TF	Thermo-fuse of Heater	FM	Flow meter
DPM	Drain Pump Motor	FAN	FAN
CO	Over Flow Micro Switch		
WV	Water Inlet Valve		

Colour Code	
0	Black
1	Brown
2	Red
3	Orange
4	Yellow
5	Green
6	Blue
7	Violet
8	Grey
9	White
P	Pink

02	01	Tip	Malzeme	Renk	Standart	Ölçü	Malzeme / Material					
							Resim ismi / Drawing name					
							Tarih		İsim			
							04.08.2005		A. GÜR			
							04.08.2005		E. Çetinkaya			
							Toleransı Verilmeyen Ölçüler ± 10 mm		Kontrol Ölçüleri		Ma.Sınıfı	
									17 3587		Tip	
									05		St.Değ.	
									20		Ölçek	
											Ölçeksiz	
											Say.No	
											1/1	
											Tamamı	
											ART 4	
											Yerine Geçti	
											Tip	
											St.Değ.	
											Ölçek	
											Ölçeksiz	
											Say.No	
											1/1	
											Tamamı	



Wiring Diagram

ART 4

